



The tunnel floor (invert) behind TBM Jessie.

Tunnelling continues towards the CBD

The NSW Government is delivering Sydney Metro West – a new underground metro railway which will double rail capacity between Parramatta and the Sydney CBD, transforming Sydney for generations to come.

This once-in-a-century infrastructure investment will provide fast, reliable turn-up-and-go metro services with fully accessible stations, link new communities to rail services and support employment growth and housing supply.

Stations have been confirmed at Westmead, Parramatta, Sydney Olympic Park, North Strathfield, Burwood North, Five Dock, The Bays, Pyrmont and Hunter Street in the Sydney CBD. Two potential station locations are being investigated west of Sydney Olympic Park, including one at Rosehill Gardens which could support a significant increase in housing. Sydney Metro West will target an opening date of 2032.

John Holland CPB Contractors Ghella Joint Venture (JCG) has been awarded the contract to deliver 3.5 kilometres

of twin metro rail tunnels between The Bays and Hunter Street and excavate the Pyrmont and Hunter Street metro stations. This work is part of the Eastern Tunnelling Package (ETP) for Sydney Metro West.

Acciona Ferrovia Joint Venture (AFJV) has been awarded the contract to deliver 11 kilometres of twin metro rail tunnels between The Bays and Sydney Olympic Park and excavate five new metro stations, including a station at The Bays.

Both projects have established separate construction sites at The Bays that provide support for tunnelling activities.

The Bays construction activities

The Central Tunnelling Package (CTP) site demobilisation works are nearing completion at The Bays Station site. While the Eastern Tunnelling Package (ETP) is in full operation, supporting TBM tunnelling from The Bays to Pyrmont.



Two acoustic sheds have been removed from The Bays following the completion of tunnelling for CTP.

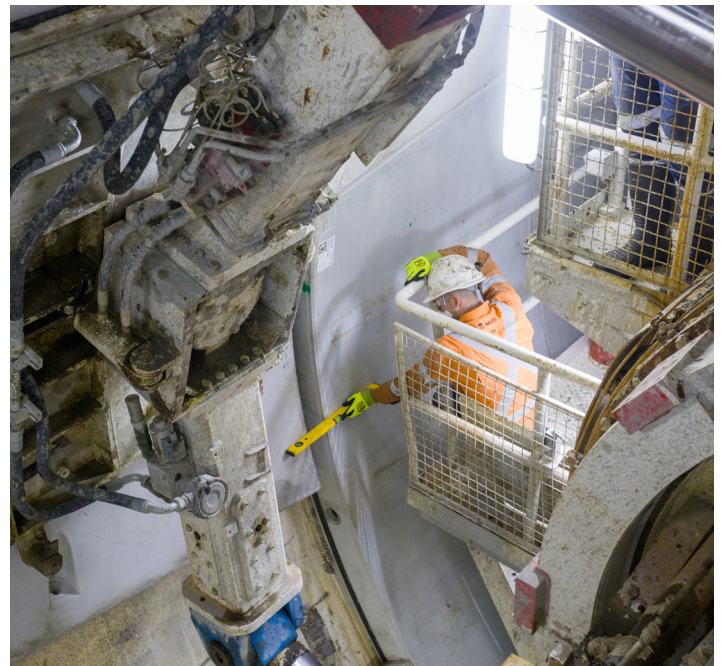
What's happening at The Bays

The Bays Station site is now working as a 24/7 tunnelling support site for ETP, feeding segments to tunnel boring machines (TBMs), Ruby and Jessie, which have both completed their first harbour crossing at Johnstons Bay and are now approaching the future Pyrmont Station location. Permanent invert works are progressing behind TBM Jessie, with about one kilometre of the tunnel floor now poured. Spoil removal generated from the TBMs at The Bays and other ETP sites including deliveries are also continuing as part of tunnelling support activities. Cross passage excavation work will commence over the coming months, with the first cross passage located between Sommerville Road and Solomons Way at Glebe Island.



A concrete segment is installed in the tunnel on TBM Ruby.

CTP is close to completing site demobilisation works at The Bays Station site. Both the spoil and segment sheds have now been disassembled and removed from the site and the team is focused on removing the remaining spoil shed concrete slab and workforce facilities over the next two months. Once these activities have been completed the site team will hand the area over to Sydney Metro and the next contractors.



A tunnel worker guides the concrete segment into position.



Bolts are installed during segment installation.

Six-month construction lookahead

Activity (subject to change)	Mar	Apr	May	Jun	Jul	Aug
Oversized equipment deliveries	● ●	● ●	● ●	● ●	● ●	● ●
TBM tunnelling activities	● ●	● ●	● ●	● ●	● ●	● ●
Demobilisation of west-bound tunnelling facilities	● ●	● ●				
Concrete demolition and excavation work within station box	● ●	● ●				
Hoarding banner installation				● ●	● ●	

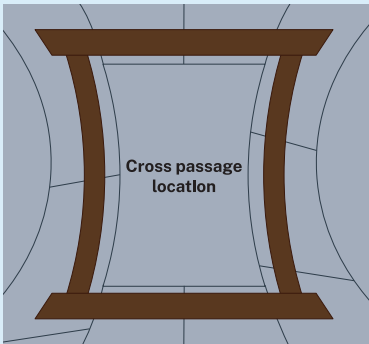
Construction activity ● Some out-of-hours works required ●

What is a cross passage?

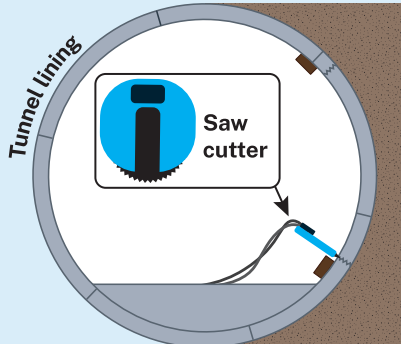
A cross passage is a connection between the two main tunnels. There will be 12 underground cross passages constructed along the Sydney Metro West Eastern Tunnelling Package alignment, located about every 150-200m along the tunnels. Cross passages are created after the TBM has passed through that section of tunnel. These passages are an important safety feature of operational tunnels and allow people to move from one tunnel to another in case of an emergency.

Cross passage excavation process

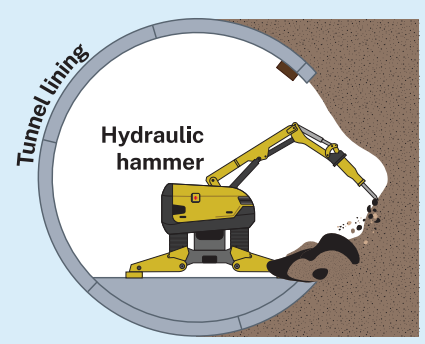
1. Installation of opening steel support



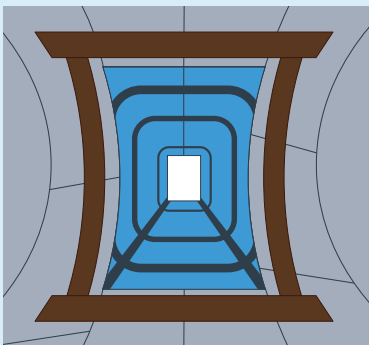
2. Cuts are made with a saw to remove parts of the segment



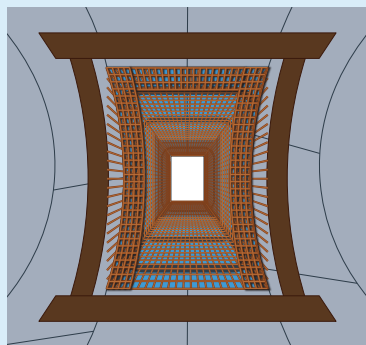
3. Excavation and ground support



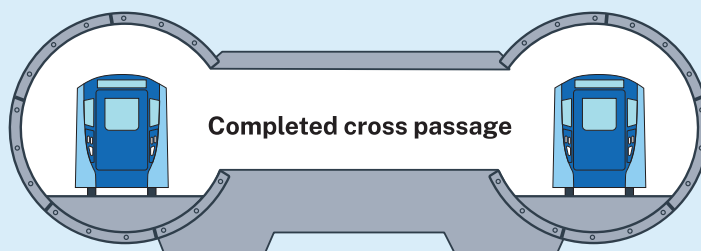
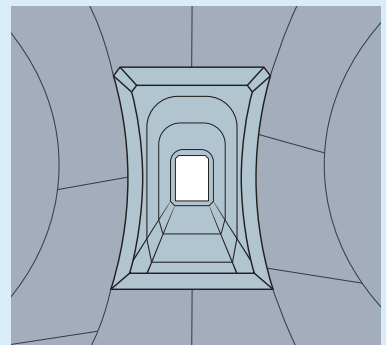
4. Installation of waterproof membrane

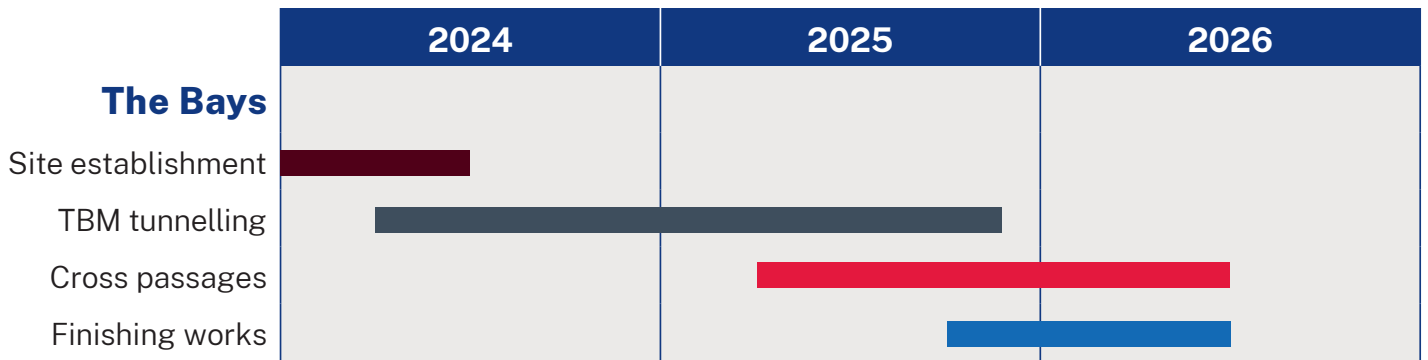


5. Installation of formwork and steel reinforcement



6. Permanent concrete lining





The Bays ETP indicative construction timeline.

Slurry Treatment Plant

During TBM excavation, crushed rock (spoil) is mixed with fluid to create a slurry to facilitate the tunnelling process. The slurry treatment plant is used to produce slurry and after excavation the slurry is then pumped from the tunnel to the treatment plant where it goes through several stages to separate the fluid from the excavated material. The spoil removed during the slurry treatment process is transferred from the treatment plant via a conveyor belt into the acoustic spoil shed where it is loaded onto trucks for removal from site. If you've travelled over Anzac Bridge since the ETP tunnelling support site was established, you may have noticed the (white) slurry treatment plant, on the southern side of site.



Aerial photo of the ETP TBM slurry treatment plant at The Bays site.

Our community teams

JCG and AFJV have teams committed to working with the community as they deliver the project.

Please contact our teams on 1800 612 173 if you have any questions or would like to provide feedback about works at The Bays. We will continue to keep you updated on the progress of work in your area. If you would prefer to receive updates by email, please send a request to MetroTunnelsJCGJV@transport.nsw.gov.au and we will add you to the distribution list.

Work hours

Tunnelling and support activities will occur 24 hours per day, seven days a week. Standard construction hours for the site are Monday to Friday from 7am to 6pm and Saturdays from 8am to 6pm, however some work will occur outside these hours. A notification will be provided for any expected out-of-hours work impacts.

Sydney Metro Connect - another way to stay informed

Download Sydney Metro Connect onto your smart device to stay informed about current work, project milestones and receive notifications for upcoming work in your area – all in one place. Sydney Metro Connect is available from the App Store or Google Play.

Weekly email updates

Weekly email updates provide the latest information about upcoming work including roadheader excavation progress. If you'd like to receive these email updates, please send a request to MetroTunnelsJCGJV@transport.nsw.gov.au and we will add you to the distribution list.

Contact us

If you have any questions or would like more information please contact our project team:

1800 612 173 Community infoline open 24 hours

MetroTunnelsJCGJV@transport.nsw.gov.au

Sydney Metro West

PO Box K659, Haymarket NSW 1240



Translating and interpreting service

If you need help understanding this information, please contact the Translating and Interpreting Service on 131 450 and ask them to call us on 1800 612 173.



Access information in over 100 languages.

Download **Sydney Metro Connect** from the App store or get it on Google Play.

