

Notification – Orchard Hills Metro Station and the Stabling and Maintenance Facility

Sydney Metro is Australia’s biggest transport project.

April 2025

Sydney Metro – Western Sydney Airport is the new metro railway line which will service Greater Western Sydney and the new Western Sydney International (Nancy-Bird Walton) Airport. A city-shaping project, the new 23-kilometre metro railway will connect Bradfield city centre with St Marys in the north – where customers can connect to the existing Sydney Trains suburban T1 Western Line. The NSW and Australian governments have a shared objective of having Sydney Metro – Western Sydney Airport operational when the airport opens for passenger services.

Parklife Metro consortium is delivering the Stations, Systems, Trains, Operations and Maintenance (SSTOM) works. See the list below for the work activities at Orchard Hills during April.

What’s new in April?

- delivery of precast concrete planks, beams and platforms

Stations, Systems, Trains, Operations and Maintenance work includes:

Orchard Hills Metro Station:

- formwork, steel fixing and concrete pours inside the Station Box
- tunnel fit-out works
- construction of internal blockwork walls inside the Station Box
- surveying and geotechnical investigations, including potholing, non-destructive digging and testing along local surrounding roads to inform utility designs
- road surface and restoration work, including filling in potholes on Kent and Lansdowne Road.

Stabling and Maintenance Facility:

- major earthworks including importing materials, excavations and compacting for the rail areas, and substation, operations control centre buildings and the maintenance and administration building
- construction of a new 132kV powerline, ongoing from the future substation area, working towards and on Patons Lane
- major drainage works including excavations, installing pits and pipes, and backfilling
- site-wide concrete works, including formwork, steel fixing for various structures such as the substation, maintenance administration building, operations control centre, and across the site
- commencement of combined services route and trunk service installation.
- commencement of works on the access road
- installation of steel structures and blockwork.

St Marys to Orchard Hills (Tunnel)- Linewide works

- concreting for the walls and slabs for cross passages in the tunnels
- installations of brackets and cable containment in the tunnels
- ongoing deliveries of materials, machinery and equipment to the site compounds at 36-39 Putland St, Claremont Meadows and Gate K3 on 88-92 Kent Rd, Orchard Hills.

Out-of-hours work includes:

- delivery of over-sized equipment and machinery and materials to the Orchard Hills Metro Station and the Stabling Maintenance Facility sites
- precast beam delivery and installation at Orchard Hills Metro Station
- 24/7 tunnel fit out activities
- extended work hours for excavation, steel fixing, concrete pours and concrete finishing works inside the station box at the Orchard Hills site and across various at the Stabling Maintenance Facility
- dewatering activities at the Orchard Hills and Stabling Maintenance Facility sites
- concrete batching plant operations at the Orchard Hills Metro Station site
- construction of a new 132kV powerline on Patons Lane including excavations, trenching and backfilling, cable laying, and installation of utility services
- commencement of combined services route (CSR) and trunk service installation
- concreting and formwork for the Unnamed Viaduct
- service utility installations and surveying
- road surface and restoration works, including filling in potholes on Kent and Lansdowne Road.

Work hours:

Standard construction hours are **Monday to Friday** from **7am to 6pm** and **Saturdays** from **8am to 1pm**.

Some work will also be required to take place outside our standard construction hours to minimise traffic impacts or to ensure the safety of pedestrians, motorists and our workers. Out-of-hours work activities will be carried out in line with the project Environmental Protection Licence, Road Occupancy Licences, and Transport for NSW requirements.

Impacted surrounding residents and businesses will be notified in advance of any out-of-hours work.

What to expect:

- mitigation measures will be in place to minimise impacts including installing noise blankets, where feasible, respite periods during high noise activities, noise and vibration monitoring, and water carts for dust suppression
- increased light and heavy vehicle movements on surrounding roads, and local road closures. All vehicles will be turned off when not in use, non-tonal reversing alarms will be fitted to plant and machinery and trucks will avoid reversing into and on site, where feasible
- temporary lighting to ensure a safe worksite will be directed away from properties
- communication will be limited to radios only when moving and unloading equipment, with no use of horns or loud radios
- traffic control and signage to safely assist motorists, pedestrians, and cyclists.

Equipment used:

Equipment used will include, but is not limited to, excavators, cranes, dozers, graders, rollers, vacuum truck, water carts, heavy and light site vehicles, generators, survey equipment, traffic management devices, concrete agitators, pneumatic drills, concrete saws, bobcats, chainsaws, telehandler, hand drill, non-powered hand tools (including hammers), franna, GenSet, light vehicles and powered hand tools.

Changes to traffic, pedestrian, and cyclist routes:

During these works, traffic control will be in place to assist motorists, pedestrians, and cyclists with any changes to traffic conditions. This may include contraflow, redirecting traffic and stop-slow traffic controls. The time of these changes will vary and are dependent on road authority approvals.

Access to driveways and buildings will be maintained at all times. Residents will be separately notified if access to driveways will be affected, or access to private property is required.

Three monthly out-of-hours lookahead activities:

Activity	Equipment	Work hours	Timing
SSTOM works – Orchard Hills Metro Station site			
Concrete pours and finishing work in station box	Concrete pump, concrete agitator, concrete Vibrator, helicopter, screed, hand drill, non-powered hand tools (including hammers), franna, GenSet, light vehicles	6pm to 12am, 5am – 10pm - Monday to Friday 6am to 6pm, Saturdays	Ongoing - 2025
Works within the station box to support the tunnel and underground station box fit out	Gantry Crane (Electric), telehandler, excavator, front end loader, hand drills	24 hours a day, seven days a week	Ongoing - 2025
Utility investigations on Kent and Caddens Road	Concrete saw, vacuum truck, excavator delivery truck, concrete agitator, handheld wacker packer/rammer	9pm to 5am Tuesday – Thursday	Tuesday, 1 to Thursday 4 April 2025
Concrete batching plant operations	Drives and conveyors, front end loader, concrete loading, concrete slumping, concrete truck, light vehicles	5am to 10pm, Monday - Friday. 6am to 6pm Saturday	Ongoing - 2025
Installation, incoming and outgoing deliveries of oversized construction material	OSOM, franna, mobile crane, gantry crane (Electric), telehandler, excavator, front end, loader, hand drills	10pm to 7am	Ongoing - 2025
Oversized plant and equipment activities	OSOM, franna, mobile crane	10pm to 7am	Ongoing - 2025
SSTOM works – Stabling Maintenance Facility site			
Extended work hours for CSR works	Excavators, day makers, trench roller, light vehicles	6pm to 2am Monday to Friday (inclusive) 1pm to 6pm Saturday. Note: To continue if consented to by the community.	Ongoing - 2025
Concrete pours and finishing works, steel fixing	M&A and OCC Building Generator, light vehicles, concrete pump concrete agitator, daymaker	6pm to 12am, 5am to 7am Monday to Friday 6am to 6pm, Saturday	Ongoing - 2025
Oversized plant and equipment activities	Traffic management, light and heavy vehicles, generators, lighting towers and mobile cranes.	10pm to 7am	Ongoing - 2025
SSTOM works – Linewide			
Concreting and formwork Oversized deliveries of plant and materials Rail track installations Service utility installations and surveying	Excavators, cranes, dump trucks, water carts, heavy and light site vehicles, generators, traffic management devices, concrete agitators, pneumatic drills, concrete tools and hand tools.	7am Mondays through to 6pm Saturdays (24 hours) 7am to 6pm Sundays Note: To occur if consented to by the community.	April 2025 – April 2026

Feedback:

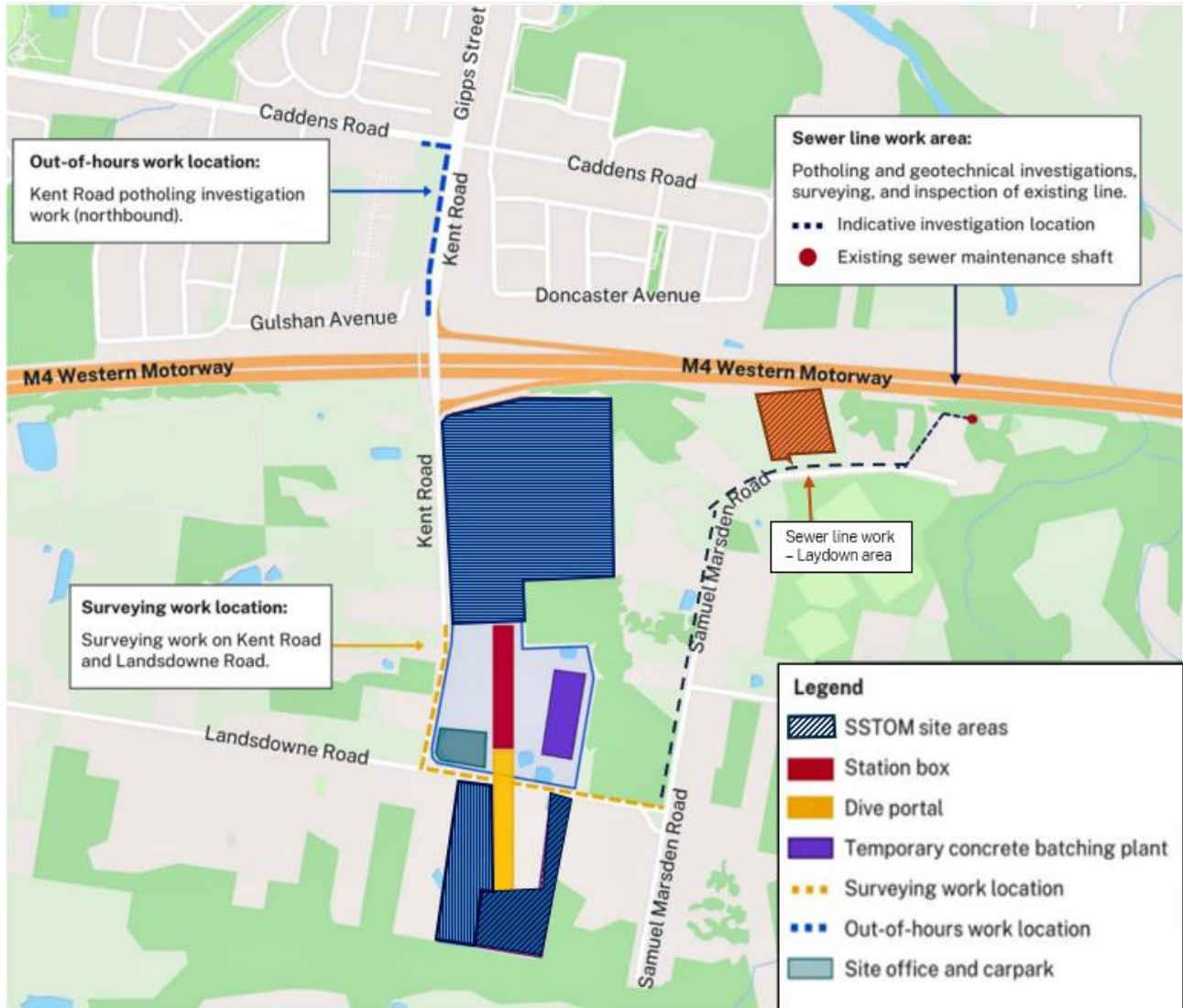
Detailed Noise and Vibration Impact Statements (DNVIS) have been prepared, including proposed mitigation measures based on noise modelling. Your feedback on appropriate respite periods or mitigation measures is encouraged. The SSTOM Community Engagement strategy is online.

Please visit www.parklifemetro.com.au to view these documents and contact us to provide any feedback.

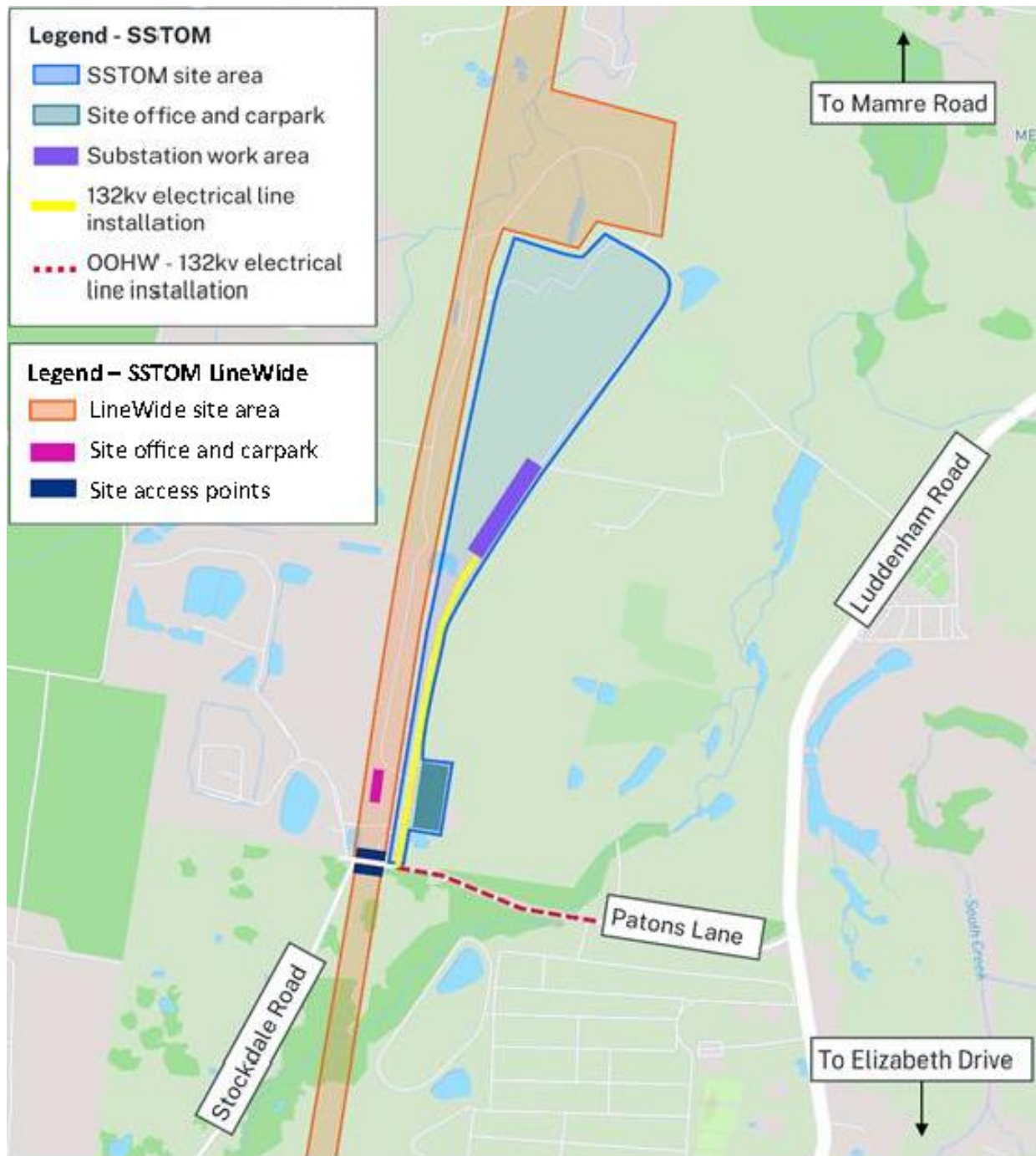
If you would prefer to receive updates by email, please let us know via sydneymetroswa@transport.nsw.gov.au and we will add you to the distribution list.

Thank you for your cooperation while we complete this essential work.

Orchard Hills Metro Station work location:



Stabling and Maintenance Facility work location:



Sydney Metro has launched Sydney Metro Connect – a new way to stay informed.

Access information in over 100 languages Download **Sydney Metro Connect** from the App store™ or get it on Google Play™.

For more information contact



24-hour Community Information Line **1800 717 703**



sydneymetroswa@transport.nsw.gov.au



Sydney Metro – Western Sydney Airport
PO Box K659, Haymarket NSW 1240



If you need help understanding this information, please contact the Translating and Interpreting Service on **131 450** and ask them to call us on **1800 717 703**.