

Mr Rob Sherry  
Team Leader Compliance – Government Projects  
Department of Planning, Housing and Infrastructure  
Locked Bag 5022  
PARRAMATTA NSW 2124

7 February 2025

Ref:201208-ER\_DPHI-January 2025

Dear Rob

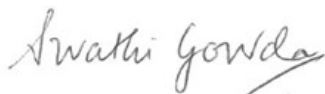
**RE: Sydney Metro - Sydney Metro West SSI - ER Monthly Report for January 2025**

Healthy Buildings International (HBI) submits this report to the Secretary in accordance with:

- Condition A30 (k) of the Sydney Metro West, Concept and Stage 1 SSI 10038 Approval (11 March 2021), and associated modifications (MOD 1 - 28 July 2021, MOD 2 - 3 June 2022, MOD3 – 4 July 2022, MOD 4 - 23 December 2022 and MOD 5 – 20 September 2023); and
- Condition A32(k) of the Sydney Metro West – The Bays to Sydney CBD SSI 19238057 Approval (24 August 2022) and associated modifications (MOD 1 – April 2023, MOD 2 – October 2023).

The attached summary details the key activities undertaken by Environmental Representatives for Sydney Metro – Sydney Metro West for the month of January 2025.

Yours sincerely



Swathi Gowda  
Environmental Representative

Cc:

DPHI: Major Projects Portal

Sydney Metro: Matthew Marrinan, John Ieroklis, Andrew Hendy, Cath Snelgrove, Ari Stypel, Ryan Butler, Sarah Kemp, Syed Shah, Valerie Lebon, Sarah Lepre

Contractors: Jared Lipton (AFJV), Steph Mifsud (GLC), Sally Reynolds (JCG)



## Table of Contents

|          |   |           |
|----------|---|-----------|
| <b>1</b> | <b>Phase B - Central Tunnelling Package</b>           | <b>4</b>  |
| 1.1      | Key Construction Activities During the Period         | 4         |
| 1.2      | Key Construction Activities Look Ahead                | 5         |
| 1.3      | ER Inspections  | 5         |
| 1.3.1    | Photos  | 5         |
| 1.4      | Endorsed Document/s                                   | 6         |
| 1.5      | Complaints  | 6         |
| 1.6      | Compliance  | 7         |
| 1.6.1    | Incidents   | 7         |
| 1.6.2    | Non-compliance and Potential Non Compliance           | 7         |
| 1.6.3    | Audits  | 7         |
| 1.7      | Looking Forward – Core Focus Areas                    | 7         |
| <b>2</b> | <b>Phase F – Western Tunnelling Package</b>           | <b>8</b>  |
| 2.1      | Key Construction Activities During the Period         | 8         |
| 2.2      | Key Construction Activities Look Ahead                | 9         |
| 2.3      | ER Inspections  | 9         |
| 2.3.1    | Photos  | 10        |
| 2.4      | Endorsed Documents                                    | 14        |
| 2.5      | Complaints  | 14        |
| 2.6      | Compliance  | 14        |
| 2.6.1    | Incidents   | 14        |
| 2.6.2    | Non-compliance  | 14        |
| 2.6.3    | Audits  | 14        |
| 2.7      | Looking Forward – Core Focus Area                     | 14        |
| <b>3</b> | <b>Phase G – Eastern Tunnel Package</b>               | <b>15</b> |
| 3.1      | Key Construction Related Activities During the Period | 15        |
| 3.2      | Key Construction Activities Look Ahead                | 16        |
| 3.3      | ER Inspections  | 16        |
| 3.3.1    | Photos  | 17        |
| 3.4      | Endorsed document/s                                   | 18        |
| 3.5      | Complaints  | 18        |
| 3.6      | Compliance  | 19        |
| 3.6.1    | Incidents   | 19        |
| 3.6.2    | Non-compliance  | 19        |
| 3.6.3    | Audits  | 19        |



|       |  |    |
|-------|--|----|
| 3.7   | Looking Forward – Core Focus Areas .....                     | 19 |
| 4     | Sydney Metro Retained Obligations and Other Activity .....   | 20 |
| 4.1   | Key Construction Activities During the Period .....          | 20 |
| 4.2   | Key Construction Activities Look Ahead.....                  | 20 |
| 4.3   | ER Inspections .....   | 20 |
| 4.3.1 | Photos .....   | 20 |
| 4.4   | Endorsed Document/s.....                                     | 20 |
| 4.5   | Complaints .....   | 20 |
| 4.6   | Compliance.....  | 20 |
| 4.6.1 | Incidents.....   | 20 |
| 4.6.2 | Non-compliance .....   | 20 |
| 4.6.3 | Audits .....   | 20 |
| 5     | Statement of Limitations.....                                | 21 |
| 6     | Appendix A – ER Document Endorsement Records (ETP only)..... | 22 |



## 1 PHASE B - CENTRAL TUNNELLING PACKAGE

The Environmental Representatives for Phase B of Sydney Metro West are:

- Michael Woolley
- Maulik Bapodara
- Swathi Gowda
- Jo Robertson

Phase B – Central Tunnelling Package (CTP) is being delivered by Acciona Ferrovia Joint Venture (AFJV). Phase B of Sydney Metro West has been further broken into:

- Phase B1: Civil works
- Phase B2: Tunnelling works

The AFJV hold EPL 21610 for this Phase of works. Activities defined as Phase B2-Tunneling Works in the Staging Report for Metro West commenced during the November 2022 reporting period at Burwood North.

### 1.1 Key Construction Activities During the Period

#### The Bays

- Ongoing demobilisation activities including removal of the diesel Tower Crane
- Ongoing removal of the spoil shed concrete slab by rock hammer using a number of large excavators.
- Ongoing removal of the Segment Shed including the sections over the station box.
- Operation of the water treatment plant and discharge of treated water. This has included use of a pumping system for water collected at the location of the former spoil shed.
- Use of the staff car park in the Ports area.

#### Five Dock

- West Shaft: Ongoing concrete FRP works for the cavern lining. Use of a crane on the surface. Concrete deliveries to the western site for the concrete works.
- East Shaft: Deliveries and various works inside the acoustic shed. Load out of material to trucks. Ongoing demolition of various parts of the shed.
- Ongoing use of a house on Waterview Street adjacent the eastern shaft for project offices.
- Water directed to the Bays water treatment plant for treatment.

#### Burwood North

- Ongoing demolition of the acoustic shed including removal of the shed roof and northern sections of the shed.
- Operation of the water treatment plant with commencement of discharge direct to stormwater instead of to the Bays.
- Ongoing use of the drop chutes for concrete delivery including OOHs.
- Support for cross passage works such as storage of spoil and general concrete wastes in the station box and load out of spoil using a crane to load trucks.
- South Shaft: Use of site sheds for BN personnel.



## North Strathfield

- Storage and removal of concrete and spoil wastes from cross passage construction.
- Deliveries of concrete for cross passage construction including OOHs.
- Pumping of water from the station box to the Bays for treatment and discharge.

## Sydney Olympic Park

- Ongoing works for the Nozzle lining including waterproofing and concreting works.
- Laydown of materials at the surface.
- Tunnelling personnel offices on site. Project Office Operating.

### 1.2 Key Construction Activities Look Ahead

- Ongoing activities as described above including demobilisation activities including the removal of the acoustic sheds at Five Dock, Burwood North and The Bays.
- Various OOHs (conducted under the EPL).

### 1.3 ER Inspections

There were three ER inspections conducted during the reporting period on 16<sup>th</sup>, 23<sup>rd</sup> and 30<sup>th</sup> January. Sites were inspected on an alternating basis with sites re-opening after the end of year holiday period on 6<sup>th</sup> January. The following new actions were raised during the inspections:

- Remove sediment and other contaminants from inside the BN shed. Ensure ERSED controls at the drains are adequate.
- Install suitable and adequate controls to contain spills at the fuel pod in the TBM laydown area at the Bays, or move the fuel pod to an area where there is secondary containment for spills. Staining from existing spills should be cleaned up.
- Remove sediment that has accumulated near the pit at the former pre-start area at the Bays.
- Ensure construction vehicle parking does not occur on local roads at the Bays.

AFJV have been responsive in addressing actions raised during ER Inspections and have provided regular noise monitoring reports outlining results of attended and unattended monitoring.

#### 1.3.1 Photos



Figure 1.1 Removal of the Spoil shed slab (The Bays).



Figure 1.2 Demolition of the Segment Shed (The Bays).



Figure 1.3. Concrete lining works for the central cavern (Five Dock).



Figure 1.4 Removal of the acoustic shed (Burwood North).



Figure 1.5 Station Box and Plenum (Burwood North).



Figure 1.6 Activities in the station box (North Strathfield).



Figure 1.7 Station Box (SOP).



Figure 1.8 Concrete pour for lining of the Nozzles - Station Box (SOP).

#### 1.4 Endorsed Document/s

The Groundwater Management Plan (Rev 10) and Monitoring Program (Rev 9) were approved by the ER during the reporting period.

#### 1.5 Complaints

Based on the monthly Sydney Metro Complaint Register issued for January 2025, there were 2 complaints reported that related to the project during the month, which compares with 4 complaints received during December.



One complaint related to noise from ventilation fans at the Bays. The other complaint related to perceived future noise impact as was listed in the 3-month lookahead and the lack of parking available near her property.

## **1.6 Compliance**

### **1.6.1 Incidents**

No Incidents as defined in the Infrastructure Approval were reported by AFJV during the reporting period.

### **1.6.2 Non-compliance and Potential Non Compliance**

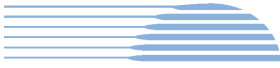
No notification of Non-Compliance was provided to the ER during the reporting period.

### **1.6.3 Audits**

The next Independent Environmental Audit is scheduled for February 2025.

## **1.7 Looking Forward – Core Focus Areas**

- Demobilisation activities including shed removal and related impacts at all sites.



## 2 PHASE F – WESTERN TUNNELLING PACKAGE

The Environmental Representatives for Phase F of Sydney Metro West are:

- Swathi Gowda
- George Kollias
- Mike Woolley
- Maulik Bapodara

Phase F – Western Tunnelling Package (WTP) is being delivered by Gamuda Australia Laing O’Rourke Consortium (GLC).

GLC are constructing this Phase of Sydney metro West under EPL 21676.

### 2.1 Key Construction Activities During the Period

During the reporting period, the following activities were being undertaken at the Sydney Olympic Park (SOP), Westmead, Parramatta and the Clyde stabling and maintenance facility which includes the Rosehill, Clyde Dive and Clyde MSF construction sites:

#### SOP

- Cross passage FRP works (24/7) - FRP for RT01 Invert pour scheduled till mid-February 2025.
- Cross passage ramp removal.
- Site demobilisation ongoing (with site handover to Sydney Metro scheduled on 23 February 2025).

#### Westmead

- Waterproofing and invert FRP works in eastern crossover cavern.
- Steel fixing, arch, nozzle invert and kicker pours for secondary linings in stub tunnels.
- Euroform formwork assembly in base of station box.
- Pitt Street defect rectification works (fixing some pavers and linemarking works for works previously undertaken).

#### Parramatta

- Station Box Eastern:
  - D-Wall repairs and load out of sandstone and clay
- Station Box Western:
  - Ongoing excavation, D-wall defect rectification and washing in preparation of steel bracket installation
  - Footing investigation works
- Zone 8 Archaeological Investigation works continuing.
- WTP is operating and discharging as necessary.
- Other works:
  - United Lane crash barriers FRP works
  - Temporary removal of containers and preparation for piling pad
  - Northern end of site - drilling for earth rods and substation slab FRP

#### Rosehill

- TBM1 traversing Departure Cavern at Clyde Dive
- TBM2 scheduled to breakthrough to Arrivals Cavern in Mid-February 2025





- Cross passage works ongoing.
- Water Treatment Plant operation including off-site discharge ongoing.
- No spoil movements off-site from shed (keeping all material internal currently).

### **Clyde Dive**

- Lining Erection Machine (LEM) and supporting works commenced 15/01/2025 and works occurring 24 hours
- Caverns ongoing - water proofing, FRP and arch lining works, including large concrete pours.
- Concrete pours for decks over Dive structure and deflection wall ongoing.
- Preparatory works for TBM 2 breakthrough in Arrivals Cavern.
- Electric tower crane operation.
- HV Protection slab service searching commenced.

### **Clyde MSF**

#### **MSF West**

- Works for new Unwin St ongoing – asphaltting, line marking, signage and lighting (scheduled opening of new Unwin Street on 7 February 2025).
- Approximately 56-hour shutdown (more likely 36-hour) for Unwin St works planned for last weekend of January – February 2025.
- Stormwater installation across site.
- Northern Duck creek embankment works commenced with rock placement and some vegetation removal.
- Final piling and abutment installation for conveyance structure over Duck Creek.
- Piling for Flood Relief Culvert scheduled to commence.

#### **MSF East**

- Retaining wall construction, backfilling and concrete pours continuing.
- Sydney Water WM2 – welding works underway, in preparation for final commissioning.
- BioBasin construction ongoing - with stormwater pit installation completed and handover to next Contractor for works.
- OOH haulage from Rosehill to MSF East continuing.
- Stockpiling and dewatering activities, as required.
- Removal of Ausgrid Poles (cutover scheduled 13-17 February 2025)

## **2.2 Key Construction Activities Look Ahead**

The key construction activities planned for February 2025 are similar to those listed in Section 3.1, with the addition of the following:

- Various OOHW (conducted under EPL)
- Realignment of Moxy Haul road (dates TBC)
- Clyde MSF West - Flood Basin to commence excavation in staged approach (early 2025 - TBC)

## **2.3 ER Inspections**

Currently, the sites are divided into two groups and visited typically fortnightly for ER inspections. The two groups are:

- Parramatta, Westmead and SOP
- Clyde Dive, Clyde MSF and Rosehill



Four ER inspections were conducted during the reporting period [08/01/2025, 15/01/2025, 22/01/2025 and 29/01/2025]; with opportunities for improvement (OFIs) identified and the following actions (summarised) raised during the month:

**Clyde Dive**

- Action raised for strip drain near ATC walkway to be pumped out and removal of some accumulated material on hardstand area (upstream) to minimise load on strip drain (prior to wet weather forecast).

**Clyde MSF East**

- Action raised for general housekeeping required around Retaining Wall Section 7 area, following recent scaffold removal works.

**Parramatta:**

- Action raised for sweeper to be mobilised on internal access road at WTP to address some loose material observed and maintenance required along coir logs installed along hoarding.

**Clyde MSF East, Parramatta and Westmead Sites:**

- Actions raised for weed management required, with prioritisation of removal of noxious weeds (e.g. Castor Oil) observed.

**SOP**

- Action raised for sweeping and maintenance of section of drain along laydown area and near site gate within GLC's control, noting stormwater pit had controls in place.
- Action raised for general housekeeping on-site (removal of litter) around site sign-on shed (Herb Elliott Avenue side).

GLC were observed to be responsive to ER feedback during inspections and for the close out of actions raised.

**2.3.1 Photos**



Figure 2.1- Parramatta Site: Excavation ongoing within Western Station Box.



Figure 2.2- Parramatta Site: Archaeological Zone 7 backfilled. Sump and ERSED controls observed in Zone 7 area.



Figure 2.3 – Parramatta Site: Archaeological Zone 8 breakout of footings underway with dust suppression.



Figure 2.4 – SOP Site: Cross passage excavation works completed and spoil removed from previous spoil storage area within Station Box.



Figure 2.5 - Westmead Site: Northern stub tunnel and southern stub tunnel.



Figure 2.6 – Westmead Site: Euroform formwork assembly in the base of station box continuing.

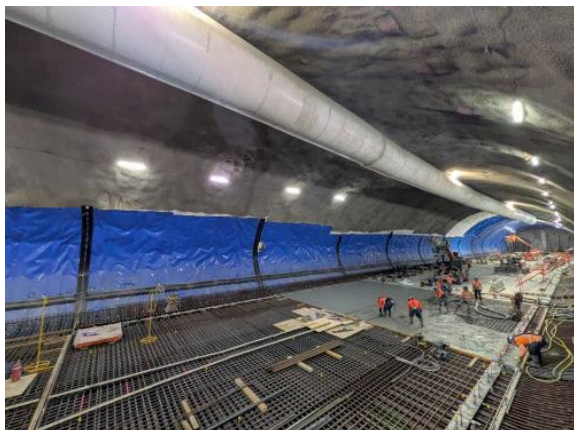


Figure 2.7 – Westmead Site: Waterproofing and invert FRP in eastern crossover cavern.



Figure 2.8 – Rosehill Site: Spoil stockpiling within shed and spoil movements internally only (to MSF).

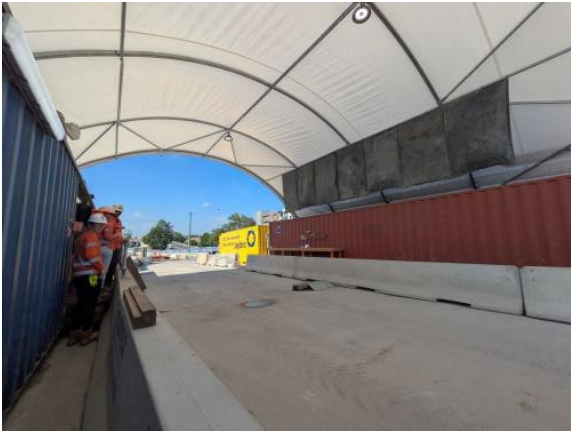


Figure 2.9 – Clyde Dive: Grout shed (Igloo) and surrounding areas observed to be maintained tidy. No grout deliveries at the time.



Figure 2.10 - Clyde MSF West Site: Piling works - near Duck Creek low flow channel.



Figure 2.11 – Clyde MSF West: Finishing works and landscaping remains in Area 5, with polymer applied prior to Xmas Shutdown.



Figure 2.12 – Clyde MSF West: Hardstand breakout for future piling works for flood relief culvert. Dust suppression observed.

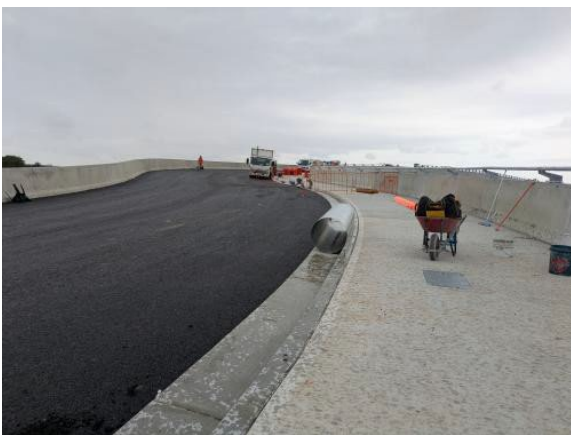


Figure 2.13 – Clyde MSF West: Works for new Unwin St ongoing, with handover/road opening scheduled in February 2025.

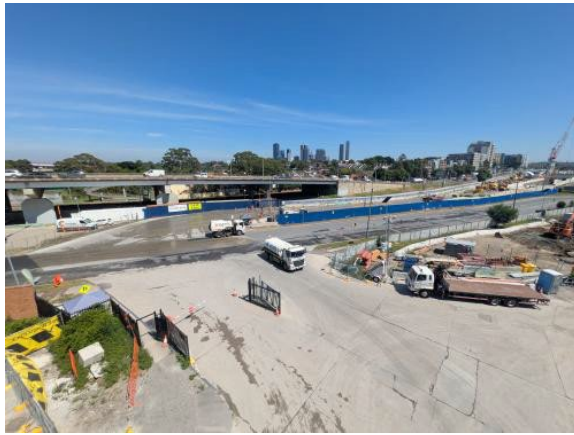


Figure 2.14 – Clyde Dive and MSF Sites: Observed water cart/street sweeper mobilised.



**Figure 2.15 – Clyde MSF East – Section 6 - Pile break back for retaining walls.**



**Figure 2.16 – Clyde MSF East: Sydney Water WM2 preparatory works for tie in and commissioning underway.**



## 2.4 Endorsed Documents

The following documents were approved or endorsed by the ER during the reporting period:

- VAMP Rev G

Annual review of management sub plans underway.

## 2.5 Complaints

Based on the Sydney Metro Complaint Register for January 2025, there were five complaints reported during the month, compared to two complaints in December. The complaints are summarised below:

### Clyde MSF

- One complaint relating to flooding within A'Becketts Creek

### Parramatta

- One complaint relating to worker behaviour
- Two complaints relating to property damage (1 x sewer pipe and 1 x tunnelling)

### Westmead

- One complaint relating to dust

## 2.6 Compliance

### 2.6.1 Incidents

No incidents considered to represent Incidents as defined under the Project Approval were reported to or observed by the ER during the reporting period. Class 3 incidents predominantly relating to leaks/spills were reported under GLC/SM reporting system during the reporting period. ER recommended a review/trend analysis of Class 3 incidents across recent months be undertaken, with provision of outcomes from review undertaken.

### 2.6.2 Non-compliance

Nil non-compliance reports provided to the ER during the reporting period.

### 2.6.3 Audits

Nil. The next Independent Environmental Audit is scheduled in March 2025 for WTP.

## 2.7 Looking Forward – Core Focus Area

The core focus areas for upcoming works are:

- Demobilisation activities at SOP with site handover scheduled in late February 2025.
- Northern Duck Creek embankments works for finalisation of creek alignment.
- Upcoming cross passage work in Parramatta (TBC)



### 3 PHASE G – EASTERN TUNNEL PACKAGE

The Sydney Metro West Eastern Tunnel Package is Stage 2 of the Sydney Metro West CSSI and is described as major civil construction works between The Bays and Sydney CBD, including station excavation at Pyrmont and Hunter Street and tunnel excavation between the Bays and Hunter Street. Stage 2 (SSI 19238057) was approved on the 24 August 2022.

The Environmental Representatives for the Sydney Metro West Eastern Tunnel Package are:

- Michael Woolley
- Maulik Bapodara
- Swathi Gowda
- Jo Robertson

The Eastern Tunnelling Package (ETP) is being delivered by John Holland CPB Ghella Joint Venture (JCG) with the contract being awarded in November 2022. Sydney Metro notified DPHI that the date of commencement of construction was 17 March 2023. JCG have received Environmental Protection Licence (EPL 21784) for the project.

#### 3.1 Key Construction Related Activities During the Period

Works conducted during the reporting period included:

##### Pyrmont East:

- Ongoing excavation of the station cavern (24/7) and adits, by road headers with spoil load out by kibble and gantry crane in the temporary shaft within the acoustic shed.
- Ongoing excavation of the permanent shaft by multiple excavators with rock hammers operating under the steel deck.
- Ongoing use of the tunnel ventilation system including scrubber units located in the tunnel.
- Use of site amenities/sheds on the steel deck to the east of the acoustic shed and use of one lane on Union Street for storage of containers.
- Occasional closure of Union Street for concrete delivery and pumping (shaft wall shotcrete).
- Ongoing treatment of water generated from tunnelling activities and groundwater. Discharge of treated water to stormwater system.

##### Pyrmont West:

- Ongoing excavation of the shaft walls and wall support.
- Ongoing use of the kibble for loading out spoil onto trucks. Trucks exiting to Pyrmont Street.
- Removal of water by vacuum truck with operations inside the acoustic shed.
- Installation of intake fans inside the acoustic enclosure.

##### Hunter Street West:

- Completion of the works to record the heritage wall adjacent George Street. Monitoring and recording by Heritage Consultants. Construction of the concrete wall over the heritage wall.
- Completion of the installation of temporary structural support elements outside Skinners Hotel as demolition works at 5 Hunter Street and 300 George Street continued to near completion.
- Excavation of soils in the SW corner of the site.
- Ongoing load out of demolition wastes and spoil through the exit to Hunter Street.
- Ongoing deliveries and pedestrian management along Hunter Street after its closure outside the site.

##### Hunter Street East:

- Activities inside the Blich Street acoustic shed including ongoing excavation of the station cavern and various adits, turnback's, declines and ventilation shafts; stockpiling and load out of spoil. Construction of concrete support pillars. Use of air ventilation systems and other tunnelling support activities.



- Ongoing wall support and roof support activities with crash/flood barrier constructed around the perimeter of the site.
- Construction of footings and king pile for the steel deck.
- Some excavation works with spoil load out through the acoustic shed.
- Ongoing removal of B-Class Hoarding and installation of A Class Hoarding along Bligh Street and Hunter Street.

#### **The Bays:**

- Ongoing tunnelling by TBM1 and TBM 2. Operation of the slurry treatment plant and load out of spoil.
- Water treatment and discharge using the Construction water treatment plant.
- Ongoing operation of the slurry treatment plant; spoil shed and related equipment. Load out of spoil from the shed.
- Occasional receipt and storage of spoil from Hunter Street and Pyrmont sites and load out spoil.
- General support activities such as in the workshops, segment delivery and storage and use of site offices.
- Use of the truck marshalling area by trucks waiting to attend other project sites.

### **3.2 Key Construction Activities Look Ahead**

The JCG facilities shutdown for the holiday period recommenced on 6 January 2025. Some works may occur during the period. The Bays site will re-start on 13 January 2025. The following works are planned to occur in January 2025:

- Ongoing activities as described above.
- Installation of the site sheds at Richard Johnston Square.
- Ongoing excavation of the cavern (24/7) and permanent shafts at the Pyrmont sites. Load out of spoil.
- Ongoing ground support at Hunter Street East.
- Ongoing tunnelling of TBMs at the Bays and treatment of slurry.

### **3.3 ER Inspections**

Two ER inspections were conducted during the reporting period on Tuesday 14<sup>th</sup> and 21<sup>st</sup> January. The following actions were raised during the inspections:

- Ensure adequate controls are in place at drains in Hunter Street and to prevent future spills of concrete/liquid waste from leaving site.
- Ensure the door at the acoustic shed exit to PBR at Pyrmont is closed when possible, to reduce noise levels from JCG activities.
- Ensure tracking of dirt off site at Pyrmont East is minimised and that any dirt that does track off site is cleaned up promptly.
- Remove dirt on Edward Street outside the Pyrmont East shed access.

JCG were observed to be responsive to ER feedback during inspections and for the close out of actions raised.





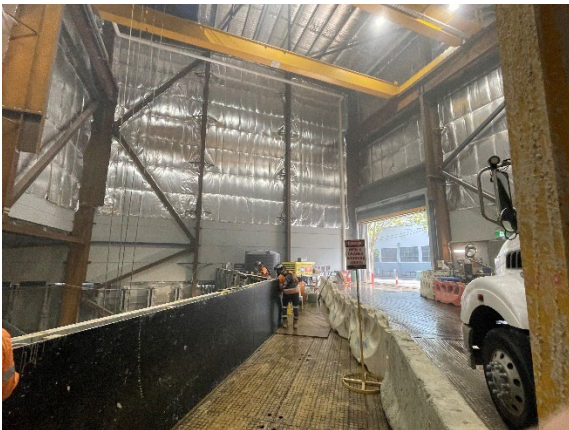
**3.3.1 Photos**



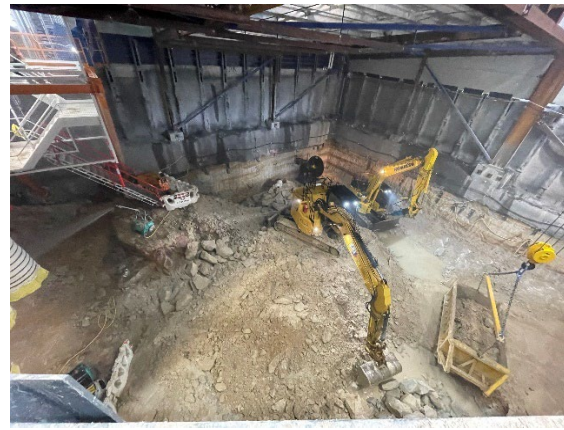
**Figure 3.1** Pyrmont East: Shaft excavation by rock hammers.



**Figure 3.2** Pyrmont East: Kibbles to load trucks with spoil.



**Figure 3.3** Pyrmont West: Works inside the acoustic shed.



**Figure 3.4** Pyrmont West: Excavation under the low roof of the acoustic shed.



**Figure 3.5** Hunter Street East: Works in the SW corner of the site.



**Figure 3.6** Hunter Street East: Trucks accessing the spoil shed.



Figure 3.7 Hunter St West: Removal of buildings and spoil from around Skinner's Hotel.



Figure 3.8 Hunter Street West: Access from Hunter Street with rumble grid. Ground stabilised with geofabric.



Figure 3.9 The Bays: Ongoing Water carts being used to wet down roads for dust suppression.



Figure 3.10 The Bays: Wheel wash in place and operating.

### 3.4 Endorsed document/s

The following documents were signed, approved or endorsed during the reporting period.

- Nil

In accordance with CoA A32(d)iii the written statements endorsing documents identified in A14, A21, C1, C5 and C14 are provided in Appendix A (if relevant).

### 3.5 Complaints

The monthly Sydney Metro complaint register for the January period indicated 18 complaints were reported to the Project that related to ETP activities (two determined to not be project related). This compared to 13 complaints received in December 2024.

Sixteen of the complaints related to the Pyrmont sites with 12 of these complaints related to noise from standard hours (with some of these complaints covering other aspects). Four complaints referenced noise and vibration from OOHWs. Three complaints related to property damage with two of these determined not to be project related. Five of the noise complaints also included a component relating to dust. One complaint related to safety.

Two complaints related to Hunter Street of which one related to a public safety issue and the other to vehicle damage.



### **3.6 Compliance**

#### **3.6.1 Incidents**

No incidents considered to represent an Incident as defined under the Project Approval were reported to the ER during the reporting period.

#### **3.6.2 Non-compliance**

No non-compliances were reported by JCG during the reporting period.

#### **3.6.3 Audits**

JCG conducted an internal audit report of the implementation of the Heritage Management Plan on 30 January 2025. The ER was an observer during the audit.

The next Independent Environmental Audit is scheduled for February 2025.

### **3.7 Looking Forward – Core Focus Areas**

In the next reporting period, the ER Team will be focused on:

- General monitoring of construction activities; including TBM tunnelling at the Bays.
- Noise associated with excavation of the Pymont and Hunter Street shafts and OOHs tunnelling at Pymont East.
- Potential for tracking of dirt at the Pymont East site and at the Bays.



## **4 SYDNEY METRO RETAINED OBLIGATIONS AND OTHER ACTIVITY**

The Environmental Representatives for the Sydney Metro Retained Obligations and other Activities are:

- Jo Robertson
- Swathi Gowda

The Sydney Metro Retained Obligations and other Activities is being delivered by Sydney Metro with various sub-contractors delivering the works. These works do not require an EPL.

### **4.1 Key Construction Activities During the Period**

The ER is not aware for other Sydney Metro managed construction activities during the period.

### **4.2 Key Construction Activities Look Ahead**

The ER is not aware for other Sydney Metro managed construction activities during the period.

### **4.3 ER Inspections**

There were no ER inspections of this work during the reporting period.

#### **4.3.1 Photos**

None

### **4.4 Endorsed Document/s**

No Sydney Metro documents were endorsed during the reporting period.

### **4.5 Complaints**

No complaints have been reported to the ER in relation to the investigations previously conducted for Sydney Metro.

### **4.6 Compliance**

#### **4.6.1 Incidents**

No incidents have been reported to the ER in relation to the investigations previously conducted for Sydney Metro.

#### **4.6.2 Non-compliance**

No non compliances have been reported to the ER in relation to the investigations previously conducted for Sydney Metro.

#### **4.6.3 Audits**

No audits were conducted during the reporting period on this package or works.



## **5 STATEMENT OF LIMITATIONS**

Healthy Buildings International (HBI) has prepared this report in accordance with the requirements of Condition A30(k) of the Sydney Metro West, Concept and Stage 1 SSI 10038 Approval (11 March 2021), and Condition A32(k) of the Sydney Metro West – The Bays to Sydney CBD SSI 19238057 Approval (24 August 2022).

The report is for the sole purposes of Department of Planning, Housing and Infrastructure (DPHI) and Sydney Metro. It has been prepared based on generally accepted practices and standards at the time it was prepared. No other warranty, expressed or implied, is made as to the professional advice included in this Report. This report did not assess any aspects relating to safety.

Where the Report indicates that information has been provided to HBI by third parties, HBI assumes no liability for any inaccuracies in or omissions to that information.

This Report was prepared based on the conditions encountered and information reviewed at this time. HBI disclaims responsibility for any changes that may have occurred after this time.

This Report should be read in full. No responsibility is accepted for use of any part of this report in any other context or for any other purpose or by third parties. This Report does not purport to give legal advice. Legal advice can only be given by qualified legal practitioners.

Except as required by law, no third party may use or rely on this Report unless otherwise agreed by HBI in writing. Except as specifically stated in this section, HBI does not authorise the use or findings of this Report by any third party.

To the extent permitted by law, HBI expressly disclaims and excludes liability for any loss, damage, cost or expenses suffered by any third party relating to or resulting from the use of, or reliance on, any information contained in this Report. HBI does not admit that any action, liability or claim may exist or be available to any third party.



HBI Healthy Buildings International Pty Ltd

## **6 APPENDIX A – ER DOCUMENT ENDORSEMENT RECORDS (ETP ONLY)**

Nil