

Mr Rob Sherry
Team Leader Compliance – Government Projects
Department of Planning, Housing and Infrastructure
Locked Bag 5022
PARRAMATTA NSW 2124

14 January 2025

Ref:201208-ER_DPHI-December 2024

Dear Rob

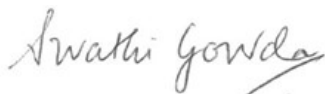
RE: Sydney Metro - Sydney Metro West SSI - ER Monthly Report for December 2024

Healthy Buildings International (HBI) submits this report to the Secretary in accordance with:

- Condition A30 (k) of the Sydney Metro West, Concept and Stage 1 SSI 10038 Approval (11 March 2021), and associated modifications (MOD 1 - 28 July 2021, MOD 2 - 3 June 2022, MOD3 – 4 July 2022, MOD 4 - 23 December 2022 and MOD 5 – 20 September 2023); and
- Condition A32(k) of the Sydney Metro West – The Bays to Sydney CBD SSI 19238057 Approval (24 August 2022) and associated modifications (MOD 1 – April 2023, MOD 2 – October 2023).

The attached summary details the key activities undertaken by Environmental Representatives for Sydney Metro – Sydney Metro West for the month of December 2024.

Yours sincerely



Swathi Gowda
Environmental Representative

Cc:

DPHI: Major Projects Portal

Sydney Metro: Matthew Marrinan, John Ieroklis, Andrew Hendy, Cath Snelgrove, Ari Stypel, Ryan Butler, Sarah Kemp, Syed Shah, Valerie Lebon

Contractors: Jared Lipton (AFJV), Steph Mifsud (GLC), Sally Reynolds (JCG), Tom St Vincent Welch (Quickway)

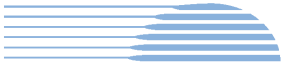
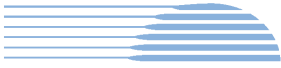


Table of Contents

1	Phase B - Central Tunnelling Package	4
1.1	Key Construction Activities During the Period	4
1.2	Key Construction Activities Look Ahead	5
1.3	ER Inspections	5
1.3.1	Photos	6
1.4	Endorsed Document/s	7
1.5	Complaints	7
1.6	Compliance	7
1.6.1	Incidents	7
1.6.2	Non-compliance and Potential Non Compliance	7
1.6.3	Audits	7
1.7	Looking Forward – Core Focus Areas	7
2	Phase F – Western Tunnelling Package	8
2.1	Key Construction Activities During the Period	8
2.2	Key Construction Activities Look Ahead	9
2.3	ER Inspections	9
2.3.1	Photos	10
2.4	Endorsed Documents	12
2.5	Complaints	12
2.6	Compliance	13
2.6.1	Incidents	13
2.6.2	Non-compliance	13
2.6.3	Audits	13
2.7	Looking Forward – Core Focus Area	13
3	Phase G – Eastern Tunnel Package	14
3.1	Key Construction Related Activities During the Period	14
3.2	Key Construction Activities Look Ahead	15
3.3	ER Inspections	15
3.3.1	Photos	16
3.4	Endorsed document/s	17
3.5	Complaints	17
3.6	Compliance	18
3.6.1	Incidents	18
3.6.2	Non-compliance	18
3.6.3	Audits	18



3.7	Looking Forward – Core Focus Areas	18
4	Sydney Metro Retained Obligations and Other Activity	19
4.1	Key Construction Activities During the Period	19
4.2	Key Construction Activities Look Ahead.....	19
4.3	ER Inspections	19
4.3.1	Photos	19
4.4	Endorsed Document/s.....	19
4.5	Complaints	19
4.6	Compliance.....	19
4.6.1	Incidents.....	19
4.6.2	Non-compliance	19
4.6.3	Audits	19
5	Statement of Limitations.....	20
6	Appendix A – ER Document Endorsement Records (ETP only).....	21



1 PHASE B - CENTRAL TUNNELLING PACKAGE

The Environmental Representatives for Phase B of Sydney Metro West are:

- Michael Woolley
- Maulik Bapodara
- Swathi Gowda
- Jo Robertson

Phase B – Central Tunnelling Package (CTP) is being delivered by Acciona Ferrovia Joint Venture (AFJV). Phase B of Sydney Metro West has been further broken into:

- Phase B1: Civil works
- Phase B2: Tunnelling works

The AFJV hold EPL 21610 for this Phase of works. Activities defined as Phase B2-Tunneling Works in the Staging Report for Metro West commenced during the November 2022 reporting period at Burwood North.

1.1 Key Construction Activities During the Period

The Bays

- Ongoing demobilisation activities including use of a diesel Tower Crane (without specific noise attenuation devices applied) for various lifting tasks. The crane was not in use for much of the reporting period having completed most tasks and is to be demobilised in January 2025.
- Ongoing removal of the spoil shed concrete slab by rock hammer using a number of large excavators.
- Ongoing removal of the Segment Shed.
- Ongoing support for construction of cross passages between the two tunnels.
- Operation of the water treatment plant and discharge of treated water. This has included use of a pumping system for water collected at the location of the former spoil shed.
- Use of the staff car park in the Ports area.

Five Dock

- West Shaft: Completion of the assembly of the form work modules and pouring of the cavern lining. Use of a crane on the surface. Concrete deliveries to the western site for the concrete works.
- East Shaft: Deliveries and various works inside the acoustic shed. Load out of material to trucks. Commencement of demolition of various parts of the shed including the spoil storage area. Demolition of the main part of the shed to commence in 2025.
- Ongoing use of a house on Waterview Street adjacent the eastern shaft for project offices.
- Water directed to the Bays water treatment plant for treatment.

Burwood North

- Commencement of the demolition of the acoustic shed through removal of the shed roof.
- All water for treatment was being directed to the Bays. Replacement of filter materials in the water treatment plant complete. Running of the water treatment plant with discharge being directed to the Bays until testing completed.
- Completion of FRP works in the cross over cavern for the Plenum.
- Ongoing use of the drop chutes for concrete delivery including OOHs.



- Support for cross passage works such as storage of spoil and general concrete wastes in the station box and load out of spoil using a crane to load trucks.
- South Shaft: Use of site sheds for BN personnel.

North Strathfield

- Storage and removal of concrete and spoil wastes from cross passage construction.
- Deliveries of concrete for cross passage construction including OOHs.
- Removal of TBM conveyor supports within the Station Box for both TBMs.
- Pumping of water from the station box to the Bays for treatment and discharge.

Sydney Olympic Park

- Demobilisation and removal of the diesel Tower Crane (as was fitted with measures such as attenuators and mufflers to reduce noise).
- Demobilisation and removal of the large crawler crane. Completion of washing down parts with TBM parts removed from site.
- Sealing of one stormwater pipe from the eastern side of the site to contain wash water and pump the water to the station box and onto the Bays for treatment.
- Laydown of materials at the surface.
- Project Office Operating.

1.2 Key Construction Activities Look Ahead

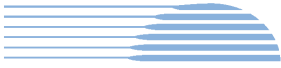
- The sites shutdown on 20th December and will generally not re-open until 6 January 2025. Some works at the Bays will progress during some of this period.
- Ongoing activities as described above.
- Ongoing demobilisation activities including the removal of the acoustic sheds at Five Dock, Burwood North and The Bays.
- Various OOHs (conducted under the EPL).

1.3 ER Inspections

There were three ER inspections conducted on 5th, 12th and 18th December. Sites were inspected on an alternating basis with sites shutdown on 20th December for the end of year holiday period. The following new actions were raised during the inspections:

- Maintain ERSED controls at the low point of the southern site at Burwood North where run off water flows off site when it rains.
- AFJV to install suitable and adequate controls to contain spills at the fuel pod in the TBM laydown area at the Bays, or move the fuel pod to an area where there is secondary containment for spills. Staining from existing spills should be cleaned up.
- AFJV to remove loose dirt from the ground in the TBM laydown area at the Bays.

AFJV have been providing regular noise monitoring reports outlining results of attended and unattended monitoring.



1.3.1 Photos



Figure 1.1 Removal of the Spoil shed slab (The Bays).



Figure 1.2 Demolition of the Segment Shed (The Bays).



Figure 1.3. Concreting and waterproofing works for the western cavern (Five Dock).

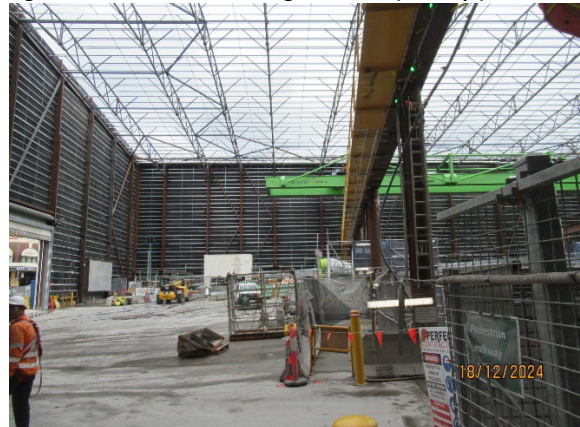


Figure 1.4 Removal of the roof of the acoustic shed (Burwood North).



Figure 1.5 Station Box (Burwood North).



Figure 1.6 Activities in the station box (North Strathfield).



Figure 1.7 Removal of the Tower Crane (SOP).



Figure 1.8 Station Box during removal of the tower crane (SOP).

1.4 Endorsed Document/s

There were no Plans approved or endorsed by the ER during the reporting period.

1.5 Complaints

Based on the weekly Sydney Metro Complaint Registers issued for December 2024, there were 4 complaints reported that related to the project during the month, which compares with 15 complaints received during November.

All four related to Noise and Vibration. Two complaints related to the Five Dock, one for OOHWs and one for daytime noise and vibration. One complaint related to noise from the Bays site; and one from the Burwood site with both complaints related to OOHWs.

1.6 Compliance

1.6.1 Incidents

No Incidents as defined in the Infrastructure Approval were reported by AFJV during the reporting period.

1.6.2 Non-compliance and Potential Non Compliance

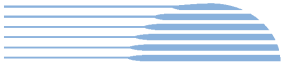
No notification of Non-Compliance was provided to the ER during the reporting period and none were observed by the ER.

1.6.3 Audits

Nil.

1.7 Looking Forward – Core Focus Areas

- Demobilisation activities including shed removal and new related impacts at all sites.
- Review of noise monitoring by AFJV to verify compliance with DNVIS predictions.



2 PHASE F – WESTERN TUNNELLING PACKAGE

The Environmental Representatives for Phase F of Sydney Metro West are:

- Swathi Gowda
- George Kollias
- Mike Woolley
- Maulik Bapodara

Phase F – Western Tunnelling Package (WTP) is being delivered by Gamuda Australia Laing O’Rourke Consortium (GLC).

GLC are constructing this Phase of Sydney metro West under EPL 21676.

2.1 Key Construction Activities During the Period

During the reporting period, the following activities were being undertaken at the Sydney Olympic Park (SOP), Westmead, Parramatta and the Clyde stabling and maintenance facility which includes the Rosehill, Clyde Dive and Clyde MSF construction sites:

SOP

- Cross passage excavation works - spoil from cross passages being brought to the SOP station box for stockpiling (24/7) and load out to surface by crane and kibble (dayshift only).
- Cross passage FRP works (24/7) - RT01 Cross Passage FRP ongoing till ~ late January 2025 and Invert pour till ~ mid-February 2025.
- Nozzle headwall FRP works (24/7).

Westmead

- Waterproofing and invert FRP works in eastern crossover cavern/enlarged cavern.
- Steel fixing, arch, nozzle invert and kicker pours for secondary linings in stub tunnels.
- Euroform formwork assembly in base of station box.
- Local area works at Hawkesbury Rd/Priddle St to remove existing redundant overhead cables and cutover.

Parramatta

- Station box:
 - Eastern – excavation throughout the station box including rock hammering, station box blinding, and scaffold extension (dayshift only)
 - Central – tensioning of struts, completion of concrete packing pours, and installation of strain gauges (dayshift only)
 - Western – installation of strain gauges (dayshift only)
- Nozzle construction:
 - Waterproofing and protection slab completion
- Archaeology completed within Zone 7 – backfill and compaction works for future office and substation. Zone 8 works commenced.
- WTP is operating and discharging as necessary.

Rosehill

- TBM1 and TBM2 continuing:
 - TBM1 currently in the Departure Cavern at the Dive and TBM2 scheduled to breakthrough to Arrivals Cavern in Mid-February 2025



- Cross passage works ongoing.
- Water Treatment Plant operation including off-site discharge ongoing.
- No spoil movements off-site from shed (keeping all material internal currently).

Clyde Dive

- Lining Erection Machine (LEM) and supporting works on hold while TBM in Departure Cavern.
- Caverns ongoing - water proofing, FRP and arch lining works, including large concrete pours.
- Concrete pours for decks over Dive structure and deflection wall ongoing.
- Preparatory works for TBM 2 breakthrough in Arrivals Cavern.
- Electric tower crane operation.

Clyde MSF

MSF West

- Northern Unwin Street works ongoing - placement of fill, concrete pours, embankment shaping, barrier installation, asphaltting and line marking.
- Utility installation along Unwin St ongoing.
- Geo synthetic liner (GSL) installation complete for 2024 (as part of RAP works in Zone 5 area), with final stage planned in March 2025.
- Stormwater installation across site.
- Piling and slab pours for water conveyance structures ongoing.
- Works continuing through the Christmas break for Unwin St works.

MSF East

- Retaining wall construction, backfilling and concrete pours continuing.
- Sydney Water Main (WM) works - WM1 commissioned and WM2 pending final commissioning.
- Existing watermains have been decommissioned and grout filled, area above currently being filled.
- BioBasin construction ongoing.
- OOH haulage from Rosehill to MSF East continuing.
- Preparation for the Christmas Shutdown period.

2.2 Key Construction Activities Look Ahead

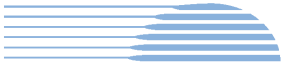
The key construction activities planned for January 2025 are similar to those listed in Section 3.1, with the addition of the following:

- Various OOHW (conducted under EPL)
- Demobilisation activities at SOP with site handover scheduled in late February 2025
- Clyde MSF West - Flood Basin to commence excavation in staged approach (early 2025 - TBC)

2.3 ER Inspections

Currently, the sites are divided into two groups and visited typically fortnightly for ER inspections. The two groups are:

- Parramatta, Westmead and SOP
- Clyde Dive, Clyde MSF and Rosehill



Three ER inspections were conducted during the reporting period including focussing on site shutdown preparation activities and controls [04/12/2024, 11/12/2024 and 18/12/2024]; with opportunities for improvement (OFIs) identified and the following two actions raised during the month:

Rosehill

- Nil

Clyde Dive

- Action raised to clean up some grout spillage observed at the LEM Grout Shed during the ER Inspection, with GLC further investigating and raising an incident report.

Clyde MSF West

- Nil

Clyde MSF East

- Action raised to clean up material (including a deep clean ahead of site shutdown) at internal Moxy crossover to prevent tracking at MSF East Gate 5.

Parramatta, Westmead and SOP:

- Nil.

2.3.1 Photos



Figure 2.1- Westmead Site: Road sweeper cleaning internal access road.



Figure 2.2- SOP Site: Nozzle FRP works at Tunnel RT02.

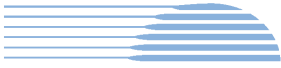


Figure 2.3 – Parramatta Site: Archaeological investigations completed within Zone 7, backfill and compaction ongoing.



Figure 2.4 – Parramatta Site: Archaeological investigations commenced in Zone 8.



Figure 2.5 - Parramatta Site – Station Box: Hammering occurring.



Figure 2.6 – Clyde MSF: GSL placement over Load Transfer Platform material. GLC reports Site Auditor has re-visited activity to witness layers and process.



Figure 2.7 – Clyde – Crossover Cavern: Major FRP for invert slabs.



Figure 2.8 – Clyde – Crossover Cavern: Large mobile formwork structures for wall / roof pours.

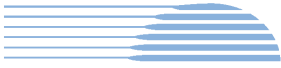


Figure 2.9 – Clyde MSF East: Spraying of stockpiles had commenced in preparation for Christmas Site Shutdown.



Figure 2.10 – Clyde MSF West: Polymer application had commenced (Unwin St Diversion).



Figure 2.11 – Maintenance being undertaken on internal haul roads, to trim and re-seal ahead of the Christmas Site Shutdown.



Figure 2.12 – Rosehill Site: Workshops (e.g. photo) kept in a clean and tidy condition. No spills/leaks/drips noted.

2.4 Endorsed Documents

The following documents were approved or endorsed by the ER during the reporting period:

- Nil

2.5 Complaints

Based on the Sydney Metro Complaint Register for December 2024, there were two complaints reported during the month, compared to two complaints in November. The complaints are summarised below.

Westmead

- One complaint relating to noise (standard hours).
- One complaint relating to safety.



2.6 Compliance

2.6.1 Incidents

No incidents considered to represent Incidents as defined under the Project Approval were reported to or observed by the ER during the reporting period. Class 3 incidents related to leaks/spills were reported under GLC's reporting system during the reporting period.

2.6.2 Non-compliance

Nil non-compliance reports provided to the ER during the reporting period.

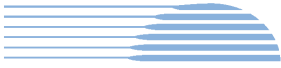
2.6.3 Audits

Nil.

2.7 Looking Forward – Core Focus Area

The core focus areas for upcoming works are:

- Clyde MSF West – approximately 56-hour shutdown for Unwin St works scheduled to commence in last weekend of January 2025
- Demobilisation activities at SOP with site handover scheduled in late February 2025
- Northern Duck Creek embankments works for finalisation of creek alignment (scheduled in February 2025)
- Upcoming cross passage work in Parramatta (TBC)



3 PHASE G – EASTERN TUNNEL PACKAGE

The Sydney Metro West Eastern Tunnel Package is Stage 2 of the Sydney Metro West CSSI and is described as major civil construction works between The Bays and Sydney CBD, including station excavation at Pyrmont and Hunter Street and tunnel excavation between the Bays and Hunter Street. Stage 2 (SSI 19238057) was approved on the 24 August 2022.

The Environmental Representatives for the Sydney Metro West Eastern Tunnel Package are:

- Michael Woolley
- Maulik Bapodara
- Swathi Gowda
- Jo Robertson

The Eastern Tunnelling Package (ETP) is being delivered by John Holland CPB Ghella Joint Venture (JCG) with the contract being awarded in November 2022. Sydney Metro notified DPHI that the date of commencement of construction was 17 March 2023. JCG have received Environmental Protection Licence (EPL 21784) for the project.

3.1 Key Construction Related Activities During the Period

Works conducted during the reporting period included:

Pyrmont East:

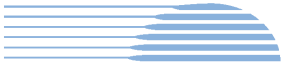
- Ongoing excavation of the station cavern (24/7) and adits, by three road headers with spoil load out by kibble and gantry crane in the temporary shaft within the acoustic shed.
- Ongoing excavation of the permanent shaft by multiple excavators with rock hammers operating under the steel deck.
- Ongoing use of the tunnel ventilation system including scrubber units located in the tunnel.
- Use of site amenities/sheds on the steel deck to the east of the acoustic shed and use of one lane on Union Street for storage of containers.
- Occasional closure of Union Street for concrete delivery and pumping (shaft wall shotcrete).
- Ongoing treatment of water generated from tunnelling activities and groundwater. Discharge of treated water to stormwater system.

Pyrmont West:

- Completion of most of the acoustic shed.
- Ongoing detailed excavation of the shaft walls and wall support.
- Installation of a spoil loading bin for trucks and commencement of its use. Removal of some spoil from excavation activities by trucks exiting to Pyrmont Street.
- Removal of water by vacuum truck with operations inside the acoustic shed.
- Ausgrid works inside the site and on Paternoster Row to connect the site to mains electricity completed and works demobilised. Site operating mains power with generators removed.
- B-Class Hoarding removed from around the outside of the acoustic shed on Pyrmont Bridge Road and Pyrmont Street.

Hunter Street West:

- Works to support and record the heritage wall adjacent George Street. Monitoring and recording by Heritage Consultants.
- Ongoing installation of temporary structural support elements outside Skinners Hotel as demolition works at 5 Hunter Street and 300 George Street continued.
- Ongoing load out of demolition wastes through the exit to Hunter Street.
- Ongoing deliveries and pedestrian management along Hunter Street after its closure outside the site.



Hunter Street East:

- Activities inside the Bligh Street acoustic shed including ongoing excavation of the station cavern and various adits, turnback's, declines and ventilation shafts; stockpiling and load out of spoil. Construction of concrete support pillars. Use of air ventilation systems and other tunnelling support activities.
- Ongoing wall support and roof support activities with crash/flood barrier being installed around the perimeter of the site.
- Construction of footings for the steel deck.
- Spoil load out through the acoustic shed.
- Removal of B-Class Hoarding and installation of A Class Hoarding along the boundary with Richard Johnson Square.

The Bays:

- Temporary cessation of tunnelling by TBM 2 under Pymont. Ongoing tunnelling by TBM1 with a halt for a conversion process to occur. Operation of the slurry treatment plant and load out of spoil.
- Water treatment and discharge using the Construction water treatment plant.
- Ongoing operation of the slurry treatment plant; spoil shed and related equipment. Load out of spoil from the shed.
- Receival and storage of spoil from Hunter Street and Pymont sites and load out spoil.
- General support activities such as in the workshops, segment delivery and storage and use of site offices.
- Use of the truck marshalling area by trucks waiting to attend other project sites.

3.2 Key Construction Activities Look Ahead

The JCG facilities shutdown for the holiday period on 20 December 2024 and will generally recommence on 6 January 2025. Some works may occur during the period. The Bays site will re-start on 13 January 2025. The following works are planned to occur in January 2025:

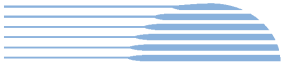
- Ongoing activities as described above.
- Ongoing excavation of the cavern (24/7) and permanent shafts at the Pymont sites. Load out of spoil.
- Ongoing ground support at Hunter Street East.
- Ongoing tunnelling of TBM1 at the Bays and treatment of slurry.

3.3 ER Inspections

Three ER inspections were conducted during the reporting period on each Tuesday of December with the last inspection for the year occurring on the 17 December 2024 prior to the shutdown period commencing on 20 December 2024. The following action was raised during the month:

- Investigate reason for elevated noise from the concrete pump on Union Street at Pymont East and ensure the plant is fixed prior to returning to site.
- Provide secondary containment to drums stored near the base of the Hunter Street ramp at Hunter Street West or remove the drums.
- Remove dirt on Edward Street outside the Pymont East shed access.
- JCG to ensure there is no tracked dirt onto Pymont Bridge Road and Pymont Street from the Pymont sites.

A previous action relating to dirt tracking onto Pymont Bridge Road was closed on the basis of improved performance, however this will be monitored. JCG were observed to be responsive to ER feedback during inspections and for the close out of actions raised.



3.3.1 Photos



Figure 3.1 Pyrmont East: Shaft excavation by rock hammers.



Figure 3.2 Pyrmont East: Viewed from 60 Union Street.



Figure 3.3 Pyrmont West: Shaft B-Class hoarding removed. shed.

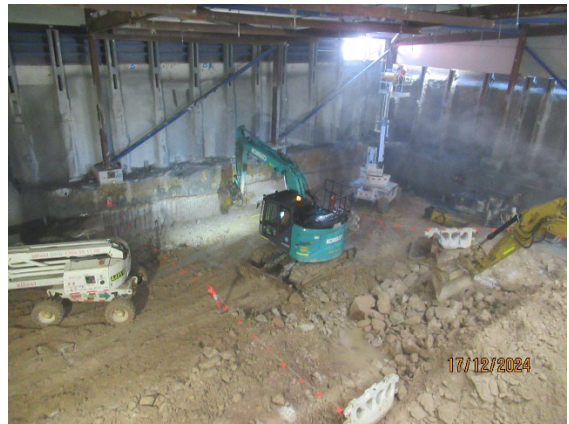


Figure 3.4 Pyrmont West: Excavation under the low roof of the acoustic shed.



Figure 3.5 Hunter Street East: Wall support around the perimeter of the site.



Figure 3.6 Hunter Street East: Barrier and A class hoarding installed adjacent Richard Johnson Square.



Figure 3.7 Hunter St West: Removal of buildings ongoing around Skinner's Hotel.



Figure 3.8 Hunter Street West: Rock Anchors being placed in Heritage wall adjacent George Street after recoding by heritage consultants.



Figure 3.9 The Bays: Ongoing TBM support activities in the station box.



Figure 3.10 The Bays: Ongoing segment deliveries.

3.4 Endorsed document/s

The following documents were signed, approved or endorsed during the reporting period.

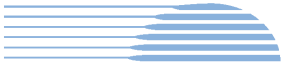
- Minor Ancillary Facility - Paternoster Row site storage (Rev B)
- Ancillary Facility Application Memo - Hunter Street (Rev B)
- Construction Environmental Management Plan (CEMP Rev 6) with updated site plans to include recently assessed Ancillary Facilities and Minor Ancillary Facilities.

In accordance with CoA A32(d)iii the written statements endorsing documents identified in A14, A21, C1, C5 and C14 are provided in Appendix A (if relevant).

3.5 Complaints

Weekly Sydney Metro complaint registers for the December period indicated 13 complaints related to ETP activities (two determined to not be project related) for December 2024 compared to 12 complaints received in November.

Eleven of the complaints related to the Pyrmont sites with two complaints related to noise from OOHWs (one determined not to be project related); six related to noise from daytime works; one related to property damage; one related to truck movements; and one related to notifications issued.



One complaint related to works at Hunter Street and one complaint related to the Bays however after investigation was determined not to be project related.

3.6 Compliance

3.6.1 Incidents

No incidents considered to represent an Incident as defined under the Project Approval were reported to the ER during the reporting period.

3.6.2 Non-compliance

One non-compliance was reported by JCG during the reporting period for late submission of the Bi-annual Water Monitoring Report for the period of April 2024 to September 2024. The report was submitted to DPHI on 6 December 2024 which was beyond time frame stated in the Soil and Water Management Plan (40 business days from the end of the reporting period).

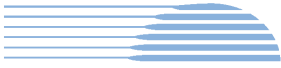
3.6.3 Audits

JCG provided the audit report for an internal audit on the Construction Noise and Vibration Management Plan conducted during previous reporting periods.

3.7 Looking Forward – Core Focus Areas

In the next reporting period, the ER Team will be focused on:

- General monitoring of construction activities; including TBM tunnelling at the Bays.
- Noise associated with excavation of the Pyrmont shafts and OOHs tunnelling at Pyrmont East.
- Potential for tracking of dirt at the Pyrmont East site and at the Bays.



4 SYDNEY METRO RETAINED OBLIGATIONS AND OTHER ACTIVITY

The Environmental Representatives for the Sydney Metro Retained Obligations and other Activities are:

- Jo Robertson
- Swathi Gowda

The Sydney Metro Retained Obligations and other Activities is being delivered by Sydney Metro with various sub-contractors delivering the works. These works do not require an EPL.

4.1 Key Construction Activities During the Period

The ER is not aware for other Sydney Metro managed construction activities during the period.

4.2 Key Construction Activities Look Ahead

The ER is not aware for other Sydney Metro managed construction activities during the period.

4.3 ER Inspections

There were no ER inspections of this work during the reporting period.

4.3.1 Photos

None

4.4 Endorsed Document/s

No Sydney Metro documents were endorsed during the reporting period.

4.5 Complaints

No complaints have been reported to the ER in relation to the investigations previously conducted for Sydney Metro.

4.6 Compliance

4.6.1 Incidents

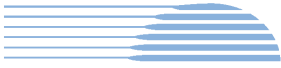
No incidents have been reported to the ER in relation to the investigations previously conducted for Sydney Metro.

4.6.2 Non-compliance

No non compliances have been reported to the ER in relation to the investigations previously conducted for Sydney Metro.

4.6.3 Audits

No audits were conducted during the reporting period on this package or works.



5 STATEMENT OF LIMITATIONS

Healthy Buildings International (HBI) has prepared this report in accordance with the requirements of Condition A30(k) of the Sydney Metro West, Concept and Stage 1 SSI 10038 Approval (11 March 2021), and Condition A32(k) of the Sydney Metro West – The Bays to Sydney CBD SSI 19238057 Approval (24 August 2022).

The report is for the sole purposes of Department of Planning, Housing and Infrastructure (DPHI) and Sydney Metro. It has been prepared based on generally accepted practices and standards at the time it was prepared. No other warranty, expressed or implied, is made as to the professional advice included in this Report. This report did not assess any aspects relating to safety.

Where the Report indicates that information has been provided to HBI by third parties, HBI assumes no liability for any inaccuracies in or omissions to that information.

This Report was prepared based on the conditions encountered and information reviewed at this time. HBI disclaims responsibility for any changes that may have occurred after this time.

This Report should be read in full. No responsibility is accepted for use of any part of this report in any other context or for any other purpose or by third parties. This Report does not purport to give legal advice. Legal advice can only be given by qualified legal practitioners.

Except as required by law, no third party may use or rely on this Report unless otherwise agreed by HBI in writing. Except as specifically stated in this section, HBI does not authorise the use or findings of this Report by any third party.

To the extent permitted by law, HBI expressly disclaims and excludes liability for any loss, damage, cost or expenses suffered by any third party relating to or resulting from the use of, or reliance on, any information contained in this Report. HBI does not admit that any action, liability or claim may exist or be available to any third party.



HBI Healthy Buildings International Pty Ltd

6 APPENDIX A – ER DOCUMENT ENDORSEMENT RECORDS (ETP ONLY)