

Mr Rob Sherry
Team Leader Compliance – Government Projects
Department of Planning, Housing and Infrastructure
Locked Bag 5022
PARRAMATTA NSW 2124

7 November 2024

Ref:201208-ER_DPHI-October 2024

Dear Rob

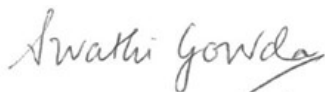
RE: Sydney Metro - Sydney Metro West SSI - ER Monthly Report for October 2024

Healthy Buildings International (HBI) submits this report to the Secretary in accordance with:

- Condition A30 (k) of the Sydney Metro West, Concept and Stage 1 SSI 10038 Approval (11 March 2021), and associated modifications (MOD 1 - 28 July 2021, MOD 2 - 3 June 2022, MOD3 – 4 July 2022, MOD 4 - 23 December 2022 and MOD 5 – 20 September 2023); and
- Condition A32(k) of the Sydney Metro West – The Bays to Sydney CBD SSI 19238057 Approval (24 August 2022) and associated modifications (MOD 1 – April 2023, MOD 2 – October 2023).

The attached summary details the key activities undertaken by Environmental Representatives for Sydney Metro – Sydney Metro West for the month of October 2024.

Yours sincerely



Swathi Gowda
Environmental Representative

Cc:

DPHI: Major Projects Portal

Sydney Metro: Matthew Marrinan, John Ieroklis, Andrew Hendy, Cath Snelgrove, Ari Stypel, Ben Armstrong, Sarah Kemp, Syed Shah, Valerie Lebon

Contractors: Jared Lipton (AFJV), Steph Mifsud (GLC), Sally Reynolds (JCG), Tom St Vincent Welch (Quickway)



Table of Contents

1	Phase B - Central Tunnelling Package	4
1.1	Key Construction Activities During the Period	4
1.2	Key Construction Activities Look Ahead	5
1.3	ER Inspections	5
1.3.1	Photos	6
1.4	Endorsed Document/s	7
1.5	Complaints	7
1.6	Compliance	7
1.6.1	Incidents	7
1.6.2	Non-compliance and Potential Non Compliance	7
1.6.3	Audits	7
1.7	Looking Forward – Core Focus Areas	7
2	Phase F – Western Tunnelling Package	8
2.1	Key Construction Activities During the Period	8
2.2	Key Construction Activities Look Ahead	9
2.3	ER Inspections	9
2.3.1	Photos	10
2.4	Endorsed Documents	13
2.5	Complaints	13
2.6	Compliance	13
2.6.1	Incidents	13
2.6.2	Non-compliance	13
2.6.3	Audits	13
2.7	Looking Forward – Core Focus Area	13
3	Phase G – Eastern Tunnel Package	14
3.1	Key Construction Related Activities During the Period	14
3.2	Key Construction Activities Look Ahead	15
3.3	ER Inspections	15
3.3.1	Photos	16
3.4	Endorsed document/s	17
3.5	Complaints	17
3.6	Compliance	18
3.6.1	Incidents	18
3.6.2	Non-compliance	18
3.6.3	Audits	18



3.7	Looking Forward – Core Focus Areas	18
4	PHASE H - Westmead Utility Relocation	19
4.1	Key Construction Related Activities During the Period	19
4.1	Key Construction Activities Look Ahead.....	19
4.2	ER Inspections	19
4.2.1	Photos	19
4.3	Endorsed Document/s.....	19
4.4	Complaints	19
4.1	Compliance.....	19
4.1.1	Incidents.....	19
4.1.2	Non-compliance	19
4.1.3	Audits	20
4.2	Looking Forward – Core Focus Areas	20
5	Sydney Metro Retained Obligations and Other Activity	21
5.1	Key Construction Activities During the Period	21
5.2	Key Construction Activities Look Ahead.....	21
5.3	ER Inspections	21
5.3.1	Photos	21
5.4	Endorsed Document/s.....	21
5.5	Complaints	21
5.6	Compliance.....	21
5.6.1	Incidents.....	21
5.6.2	Non-compliance	21
5.6.3	Audits	21
6	Statement of Limitations.....	22
7	Appendix A – ER Document Endorsement Records (ETP only).....	23



1 PHASE B - CENTRAL TUNNELLING PACKAGE

The Environmental Representatives for Phase B of Sydney Metro West are:

- Michael Woolley
- Maulik Bapodara
- Swathi Gowda
- Jo Robertson

Phase B – Central Tunnelling Package (CTP) is being delivered by Acciona Ferroviol Joint Venture (AFJV). Phase B of Sydney Metro West has been further broken into:

- Phase B1: Civil works
- Phase B2: Tunnelling works

The AFJV hold EPL 21610 for this Phase of works. Activities defined as Phase B2-Tunneling Works in the Staging Report for Metro West commenced during the November 2022 reporting period at Burwood North.

1.1 Key Construction Activities During the Period

The Bays

- Commencement of demobilisation of the site following arrival of the two TBMs at SOP. This has comprised installation of a Tower Crane to remove the vertical conveyors; removal of bridge conveyor sections and removal of parts of the vertical conveyor. Commencement of the removal of the Spoil shed from the northern end.
- Ongoing support for construction of cross passages between the two tunnels.
- Movement of staff from some site office facilities due to demolition of the adjacent spoil shed.
- Operation of the water treatment plant and discharge of treated water.
- Use of the staff car park in the Ports area.

Five Dock

- West shaft: Removal of TBM tunnelling infrastructure such as conveyor belts and supports. Hammering out concrete plinths. Deliveries of form work modules and assembly of the modules in the base of the shaft using a crane on the surface.
- East Shaft: Deliveries and various works inside the acoustic shed. Removal of waste concrete from plinth removal. Load out to trucks.
- Ongoing use of a house on Waterview Street adjacent the eastern shaft for project offices.
- Water directed to the Bays water treatment plant for treatment.

Burwood North

- OOHs relating to utilities in various areas around the site.
- Commencement of the removal of some supporting plant for the TBM including the grout plant and harmonic sub.
- Commencement of the removal of site sheds and transfer of some sheds to Burwood South.
- All water for treatment was being directed to the Bays. Replacement of some filter materials in the TBM.
- Concrete works in the cross over cavern for the Plenum.
- Ongoing use of the drop chutes for concrete delivery including OOHs.



- Storage of cross passage spoil and general concrete wastes in the station box and load out of spoil using a crane to load trucks.
- South Shaft: Set up and use of site sheds for BN personnel.

North Strathfield

- Removal of TBM conveyor supports within the Station Box for both TBMs.
- Pumping of water from the station box to the Bays for treatment and discharge.
- Removal of concrete plinths use for the TBM traverse.

Sydney Olympic Park

- Use of the Tower Crane to disassemble the TBMs and load out to the surface. Equipment cleaned in the station box.
- Installation of the tower crane.
- Use of a large crawler crane for TBM removal.
- Construction of plinths within the station box.
- Various deliveries to the station box and laydown of materials at the surface.
- Project Office Operating.

1.2 Key Construction Activities Look Ahead

- Ongoing activities as described above.
- Increasing demobilisation activities.
- Operation of tower cranes at SOP and the Bays.
- Various OOHWs (conducted under the EPL).

1.3 ER Inspections

There were five ER inspections conducted on each Thursday during October. Sites were inspected on an alternating basis. The following actions were raised:

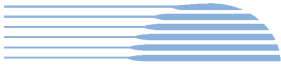
The Bays:

- Ensure thorough cleaning of the Port Access Road at the Bays out to the roundabouts so that the roads are free of dust and no raised dust from vehicles passing can be observed.
- Clean built-up sediment from the area to the north of the spoil shed at the Bays including at the drain.

Five Dock, Burwood North, North Strathfield and Sydney Olympic Park

- Nil

AFJV have been responsive in closing out actions raised during inspections. AFJV have been providing regular noise monitoring reports outlining results of attended and unattended monitoring.



1.3.1 Photos



Figure 1.1 Removal of the north end of the Spoil Shed (The Bays).



Figure 1.2 Concrete pour for the invert of the Central Cavern (Five Dock).



Figure 1.3 Formwork being assembled in the western shaft (Five Dock).



Figure 1.4 Site sheds set up at the south shaft (Burwood North).



Figure 1.5 Works in the station box (Burwood North).



Figure 1.6 Activities in the station box (North Strathfield).



Figure 1.7 TBM in the station box. Disassembly activities using the tower crane (SOP).



Figure 1.8 Tower crane and crawler crane in operation (SOP).

1.4 Endorsed Document/s

The following Plans were approved or endorsed by the ER during the reporting period:

- Fauna and Flora Management Plan (Rev 8)
- Air Quality Management Plan (Rev 6)
- Visual Amenity Management Plan (Rev 7) and
- Waste MP (Rev 6)

1.5 Complaints

Based on the Sydney Metro Complaint Register for October 2024, there were 3 complaints reported that related to the project during the month, which compares with 3 complaints received during September and 10 complaints during August. There was one complaint reported in October that was not related to the project.

All three project related complaints were for OOHs Noise. One was for works in the Station Box at North Strathfield; one was for works at SOP to disassemble the TBM; and the third related to tunnelling (Cross Passage) construction.

1.6 Compliance

1.6.1 Incidents

No Incidents as defined in the Infrastructure Approval were reported by AFJV during the reporting period.

1.6.2 Non-compliance and Potential Non Compliance

No Non-Compliance Reports were provided to the ER during the reporting period.

1.6.3 Audits

The report for the fifth Independent Environmental Audit on the Sydney Metro West, Concept and Stage 1 SSI 10038 Approval was provided in October 2024.

1.7 Looking Forward – Core Focus Areas

- Demobilisation activities and new related impacts at all sites.
- Review of noise monitoring by AFJV to verify compliance with DNVIS predictions.



2 PHASE F – WESTERN TUNNELLING PACKAGE

The Environmental Representatives for Phase F of Sydney Metro West are:

- Swathi Gowda
- George Kollias
- Mike Woolley
- Maulik Bapodara

Phase F – Western Tunnelling Package (WTP) is being delivered by Gamuda Australia Laing O’Rourke Consortium (GLC).

GLC are constructing this Phase of Sydney metro West under EPL 21676.

2.1 Key Construction Activities During the Period

During the reporting period, the following activities were being undertaken at the Sydney Olympic Park (SOP), Westmead, Parramatta and the Clyde stabling and maintenance facility which includes the Rosehill, Clyde Dive and Clyde MSF construction sites:

SOP

- Cross passage excavation works - spoil from cross passages being brought to the SOP station box for stockpiling (24/7) and load out to surface by crane and kibble (dayshift only)
- Cross passage FRP works (24/7)

Westmead

- Waterproofing and protection screed installation being undertaken in eastern crossover cavern/enlarged cavern
- Waterproofing, steel fixing and arch pours for secondary linings in stub tunnels
- Nozzle and Euroform formwork assembly in base of station box
- Demolition of concrete stockpile/bin walls in spoil shed completed
- Service investigations for Local Area Works (LAW) at Priddle- Hawkesbury completed
- Water Treatment Plant (WTP) is operational

Parramatta

- Station box:
 - Eastern – excavation throughout the station box including rock hammering (dayshift only)
 - Central – removal of piling pad slabs, DGB materials to commence excavation (dayshift only)
 - Western – alluvium excavation (dayshift only)
- Nozzle construction:
 - Excavation and shotcreting underway (24/7)
- Archaeological investigations ongoing in Zone 7 – East
- Backfill of Archaeology Zone 7 – West (for future office compound)
- WTP is operating and discharging as necessary

Rosehill

- TBM 1 launched on 23 September 2024



- TBM 2 launched on 28 October 2024
- Cross passage works are ongoing toward SOP
- Water Treatment Plant operation including off-site discharge is ongoing
- No spoil movements off site from shed, keeping all material internal currently (to MSF)

Clyde Dive

- Lining Erection Machine (LEM) works ongoing 24hr
- OOH Grout Deliveries via Concrete Agis
- Cavern - waterproofing and lining in the Arrivals; and base slab pours and FRP in Departures ongoing
- Dive base slab pours for southern portion
- Plank installation over Dive structure
- Electric tower crane operation
- HV Protection Slab works – on hold for redesign; some NDD investigations ongoing

Clyde MSF

MSF West

- Northern Unwin St works primarily complete on northbound lane and shifted to southbound lane (end October 2024)
- Northern Unwin Street tie-in works ongoing - placement of fill, concrete pours and embankment shaping, asphaltting and line marking
- 56-hour shutdown completed for 26-28 October Unwin St diversion works
- CIC piling for ground improvement works and Load Transfer Platform (either side of water conveyance structures) ongoing
- Piling and slab pours of abutments for water conveyance structures ongoing
- Round 2 of litter removal and weeding scope commenced on 30 October 2024

MSF East

- Retaining wall construction and concrete pours continuing
- Dewatering of work areas ongoing – with dirty water being transferred to Rosehill WTP
- Sydney Water Main (WM) works - WM1 commissioned and WM2 cleaned and disinfected
- BioBasin blinding poured and formwork to commence

2.2 Key Construction Activities Look Ahead

The key construction activities planned for November 2024 are similar to those listed in Section 3.1, with the addition of the following:

- Various OOHW (conducted under EPL).
- Clyde MSF West - Flood Basin to commence excavation in staged approach

2.3 ER Inspections

Currently, the sites are divided into two groups and visited typically fortnightly for ER inspections. The two groups are:

- Parramatta, Westmead and SOP
- Clyde Dive, Clyde MSF and Rosehill



Five ER inspections were conducted during the reporting period [02/10/2024, 09/10/2024, 16/10/2024, 23/10/2024 and 30/10/2024 (with DPHI Representatives present)] with opportunities for improvement (OFIs) identified and the following actions raised during the month:

Parramatta:

- Action raised for minor housekeeping required at storage location of boxes for bolts, prevent them becoming windblown and to remove food/beverage litter

Rosehill

- Action raised for stormwater drain requiring maintenance (replacement of drain guard and removal of accumulated silt).

Clyde Dive

- Action raised for minor housekeeping (removal of litter), removal of couple batteries and jersey can (without secondary containment).

Clyde MSF West

- Action raised for gutter along section of Unwin Street adjacent to Gate MSF09 requiring maintenance (removal of accumulated sediment).
- Action raised for GLC to investigate timing of works in Area 5 and installation of additional temporary ERSED controls for some exposed sections of embankment.

Westmead, Clyde MSF East and SOP:

- Nil

2.3.1 Photos



Figure 2.1- Parramatta Site: Archaeological excavation update and history of the location being provided by GML.



Figure 2.2- Parramatta Site: Selection of artefacts from the archaeological excavations.



Figure 2.3 – Parramatta Site: Station Box - Sprinklers used during sandstone breakout.



Figure 2.4 – Parramatta Site: Settlement tank adjacent to Station Box, to assist with removing sediment load before pumping to WTP.



Figure 2.5 -Westmead Site: Nozzle formwork assembly in base of station box.

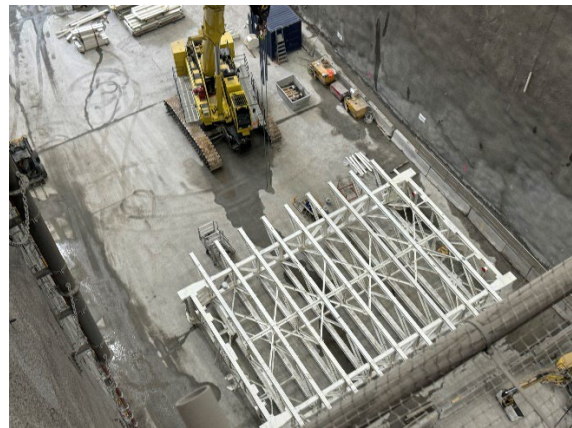


Figure 2.6 – Westmead Site: Euroform formwork assembly in base of station box.

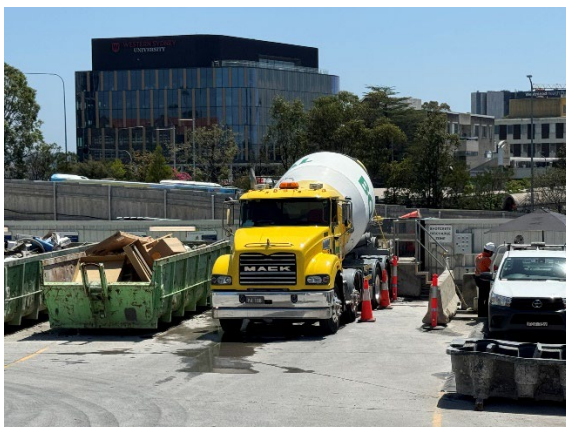


Figure 2.7 – Westmead Site: Concrete truck delivery. Refer Figure 2.8 for continued commentary.



Figure 2.8 – Westmead Site: Sprinklers on driveway to manage dust and cleanliness of truck wheels.

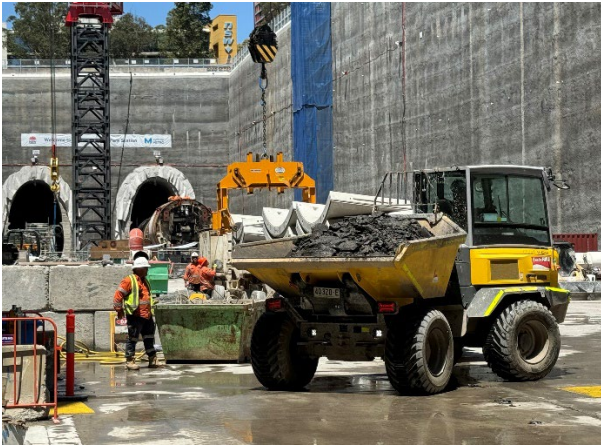


Figure 2.9 – SOP Site: Cross passage excavations ongoing. Spoil brought to station box for stockpiling 24/7; load-out to surface in daytime.



Figure 2.10 –Clyde Dive: Lining Erection Machine (LEM) works ongoing.



Figure 2.11 – Clyde Dive Site: Washdown sump for grout pump under construction.

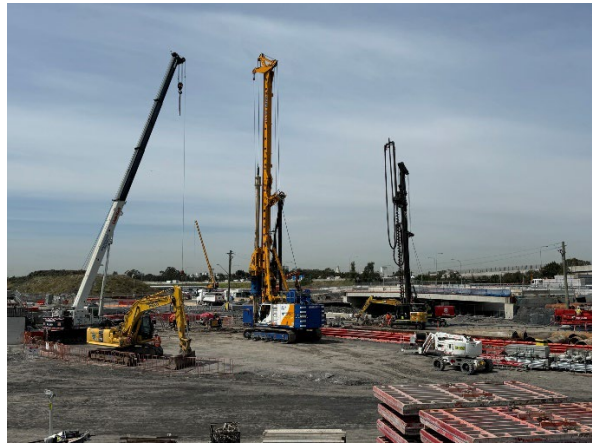


Figure 2.12: Clyde MSF West Site: CIC piling - Load Transfer Platform (LTP), adjacent to water Conveyance Structures.



Figure 2.13 –Unwin Street Road works underway.



Figure 2.14 – Clyde MSF East Site: Retaining wall construction and backfill ongoing.



2.4 Endorsed Documents

The following documents were approved or endorsed by the ER during the reporting period:

- CEMP Rev E

2.5 Complaints

Based on the Sydney Metro Complaint Register for October 2024, there were six complaints reported during the month, compared to two complaints in the previous month. Of the six complaints, the Complaints Register notes three complaints as unrelated to SM activities. The remaining complaints are summarised below.

Parramatta

- One complaint relating to dust build up

Westmead

- One complaint relating to OOHW – noise and vibration

Clyde/ Rosehill

- One complaint relating to general noise OOHW and reversing trucks

2.6 Compliance

2.6.1 Incidents

No incidents considered to represent Incidents as defined under the Project Approval were reported to or observed by the ER during the reporting period.

Five (Class 3) incidents related to minor leaks or spills were reported under GLC's reporting system during the reporting period.

2.6.2 Non-compliance

Nil non-compliance reports provided to the ER during the reporting period.

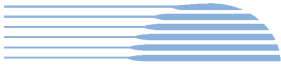
2.6.3 Audits

Nil. The report for Independent Environmental Audit #5 was submitted to DPHI in the reporting period.

2.7 Looking Forward – Core Focus Area

The core focus areas for the coming month are:

- Management of OOH at Clyde Dive
- Management of potential mud tracking from sites
- Management of potential heritage and vibration impacts from Northern Unwin St roadworks at Clyde MSF West (adjacent to RTA Depot façade – local heritage significance).



3 PHASE G – EASTERN TUNNEL PACKAGE

The Sydney Metro West Eastern Tunnel Package is Stage 2 of the Sydney Metro West CSSI and is described as major civil construction works between The Bays and Sydney CBD, including station excavation at Pyrmont and Hunter Street and tunnel excavation between the Bays and Hunter Street. Stage 2 (SSI 19238057) was approved on the 24 August 2022.

The Environmental Representatives for the Sydney Metro West Eastern Tunnel Package are:

- Michael Woolley
- Maulik Bapodara
- Swathi Gowda
- Jo Robertson

The Eastern Tunnelling Package (ETP) is being delivered by John Holland CPB Ghella Joint Venture (JCG) with the contract being awarded in November 2022. Sydney Metro notified DPHI that the date of commencement of construction was 17 March 2023. JCG have received Environmental Protection Licence (EPL 21784) for the project.

3.1 Key Construction Related Activities During the Period

Works conducted during the reporting period included:

Pyrmont East:

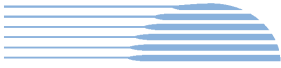
- Ongoing excavation of the station cavern (24/7), by two road headers with spoil load out by kibble and gantry crane in the temporary shaft within the acoustic shed.
- Ongoing excavation of the permanent shaft by multiple excavators with rock hammers operating under the steel deck.
- Ongoing use of the tunnel ventilation system including scrubber units located in the tunnel.
- Ongoing filling in gaps in the acoustic shed wall. Ongoing use of site sheds on the upper deck.
- Use of site amenities/sheds on the steel deck to the east of the acoustic shed and use of one lane on Union Street for storage of containers.
- Ongoing treatment of water generated from tunnelling activities and groundwater. Discharge of treated water to stormwater system.

Pyrmont West:

- Ongoing construction of the frame for the acoustic shed and installation of the acoustic panels.
- Ongoing excavation of the shaft by multiple rock hammers.
- Removal of spoil from excavation activities by truck using the steel deck as a loading point for trucks exiting to Pyrmont Street.
- Removal of water by vacuum truck

Hunter Street West:

- Ongoing archaeological excavation in De Mestre Place by heritage consultants. Recording of excavation and salvage of artefacts.
- General reduction in demolition activities as some sections of 5 Hunter Street and 300 George Street buildings remaining as support for Skinners Hotel until temporary structural supports are designed and constructed.
- Ongoing load out of demolition wastes as required.
- Ongoing deliveries and pedestrian management along Hunter Street.
- Establishment of hoarding along the northern side of Hunter Street at the western end of Hunter Street where closure occurred on 30 September.
- Tower crane removed



Hunter Street East:

- Activities inside the Blich Street acoustic shed including ongoing excavation of the station cavern and various adits, turnback's, declines and ventilation shafts; stockpiling and load out of spoil. Construction of concrete support pillars. Use of air ventilation systems and other tunnelling support activities.
- Completion of hard demolition of buildings.
- Construction of piling pads including use of flowable concrete to level the site. Commencement of piling.
- Tower crane removed.
- Spoil load out through the acoustic shed.

The Bays:

- Ongoing tunnelling by TBM 'Jessie Street' towards Pyrmont. Operation of the slurry treatment plant and load out of spoil. Preparation of TBM 1 for tunnelling.
- Water treatment and discharge using the Construction water treatment plant.
- Ongoing operation of the slurry treatment plant; spoil shed and related equipment. Load out of spoil from the shed.
- Receival and storage of spoil from Hunter Street and Pyrmont sites and load out spoil.
- General support activities such as in the workshops, segment delivery and storage and use of site offices.
- Use of the truck marshalling area by trucks waiting to attend other project sites.

3.2 Key Construction Activities Look Ahead

The following works are planned to occur in October 2024:

- Ongoing activities as described above.
- Ongoing excavation of the cavern (24/7) and permanent shaft at Pyrmont East. Load out of spoil from site.
- Ongoing piling and ground support at Hunter Street East. Shaft excavation to commence at Hunter Street sites using rock hammers after piling.
- Shaft excavation to continue at Pyrmont sites.
- Ongoing tunnelling of TBM 'Jessie' at the Bays and treatment of slurry. Preparation for TBM 2 tunnel excavation

3.3 ER Inspections

Three ER inspections were conducted during the reporting period Tuesday 1st, 15th and 22nd October. The following actions were raised during the month:

- JCG to increase the use of the rapid shut doors to the acoustic shed at Pyrmont East so they are shut more frequently to reduce noise leakage from the shed.
- Remove drums in the truck marshalling area at the Bays to a contained location.

Key discussion points during the month included completion of the acoustic shed at Pyrmont East; archaeological works at Hunter West; and noise and vibration monitoring results. JCG were observed to be responsive to ER feedback during inspections and for the close out of actions raised.

The ER also attended an OOHs meeting with DPFI, Sydney Metro and the Acoustic Advisor on the evening/night of 28th October that focussed on noise related impacts at Pyrmont East following completion of the acoustic shed.



3.3.1 Photos



Figure 3.1 Pyrmont East: Base of the shaft-cavern excavation by roadheaders.



Figure 3.2 Pyrmont East: Inside the acoustic shed showing kibbles and gantry crane.



Figure 3.3 Pyrmont West: Construction of the acoustic shed.



Figure 3.4 Pyrmont West: Excavation under the steel deck using rock hammers.

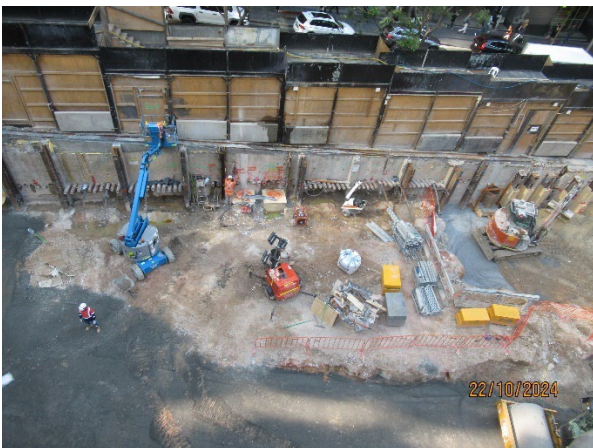


Figure 3.5 Hunter Street East: Roof support works.



Figure 3.6 Hunter Street East: Piling pad construction.



Figure 3.7 Hunter St West: Signage for road closure of Hunter Street. Hoarding under construction.



Figure 3.8 Hunter Street West: Archaeological Excavations adjacent the former De Mestre Place.



Figure 3.9 The Bays: Segment storage area.



Figure 3.10 The Bays: Slurry Treatment Plant.

3.4 Endorsed document/s

The following documents were approved or endorsed during the reporting period.

- Minor Ancillary Application - Hunter Street East - Richard Johnston Square (Rev C).

In accordance with CoA A32(d)iii the written statements endorsing documents identified in A14, A21, C1, C5 and C14 are provided in Appendix A (if relevant).

3.5 Complaints

Eleven complaints related to ETP activities were reported by Sydney Metro for October 2024 compared to 7 complaints received in September. All the complaints related to noise from the Pymont sites. It is noted that the near completion of demolition at Hunter Street and associated reduction of noise is the likely basis for nil complaints reported at the Hunter Street sites.

Four of the 11 complaints at Pymont were from one complainant noting cumulative noise impacts were a key issue amongst other issues. Four of the remaining complaints related to noise from standard hours and the other three related to noise from OOHWs. Daytime works at both Pymont sites was dominated by hammering for the permanent shafts.



3.6 Compliance

3.6.1 Incidents

No incidents considered to represent an Incident as defined under the Project Approval were reported to the ER during the reporting period.

One incident was reported to the ER regarding run off from the Pymont West site entering a drain on 2 October. The incident was reported to the EPA.

3.6.2 Non-compliance

One non-compliance was reported by JCG during the reporting period relating to an unapproved section of Elizabeth Street being used to access Hunter Street. This was raised as a non-compliance in the Independent Environmental Audit report.

3.6.3 Audits

The report for the Independent Environmental Audit covering the ETP works in August 2024 was provided during the reporting period.

3.7 Looking Forward – Core Focus Areas

In the next reporting period, the ER Team will be focused on:

- General monitoring of construction activities; including TBM tunnelling at the Bays.
- Noise associated with excavation of the Pymont shafts and OOHs tunnelling at Pymont East.
- Potential for tracking of dirt at the various demolition sites and at the Bays.



4 PHASE H - WESTMEAD UTILITY RELOCATION

The Sydney Metro West Phase H – Westmead Utilities Relocation involves the installation of new utility services around the new Sydney Metro Station at Westmead via Hawkesbury, Bailey and Hassell Streets.

The Environmental Representatives for the Sydney Metro West Eastern Tunnel Package are:

- Swathi Gowda
- George Kollias
- Michael Woolley
- Maulik Bapodara

The Sydney Metro West Phase H – Westmead Utilities Relocation is being delivered by Quickway with the contract being awarded in August 2023.

No EPL will be required for this phase of Sydney Metro West.

4.1 Key Construction Related Activities During the Period

- Nil

4.1 Key Construction Activities Look Ahead

- Nil – refer Section 4.2

4.2 ER Inspections

No ER inspections were completed during the reporting period. A final inspection of the Silverwater Compound is currently being scheduled in November 2024.

4.2.1 Photos

None.

4.3 Endorsed Document/s

- Nil

4.4 Complaints

Nil complaints were provided to the ER for reporting period.

4.1 Compliance

4.1.1 Incidents

No incidents considered to represent Incidents as defined under the Project Approval were reported to or observed by the ER during the reporting period.

4.1.2 Non-compliance

No Non-Compliance Reports were provided to the ER during the reporting period.



4.1.3 Audits

Nil. The report for Independent Environmental Audit #5 was submitted to DPHI in the reporting period.

4.2 Looking Forward – Core Focus Areas

The core focus areas for the coming month are:

- Final (~ six monthly) Compliance Assessment Report

It is understood from Sydney Metro that Council has accepted scope and responsibility for permanent restoration of areas for works associated with the Westmead Utility Relocation Project. It should be noted that this is last Monthly ER Report for Sydney Metro West Phase H – Westmead Utilities Relocation.



5 SYDNEY METRO RETAINED OBLIGATIONS AND OTHER ACTIVITY

The Environmental Representatives for the Sydney Metro Retained Obligations and other Activities are:

- Jo Robertson
- Swathi Gowda

The Sydney Metro Retained Obligations and other Activities is being delivered by Sydney Metro with various sub-contractors delivering the works. These works do not require an EPL.

5.1 Key Construction Activities During the Period

The ER is not aware for other Sydney Metro managed construction activities during the period.

5.2 Key Construction Activities Look Ahead

The ER is not aware for other Sydney Metro managed construction activities during the period.

5.3 ER Inspections

There were no ER inspections of this work during the reporting period.

5.3.1 Photos

None

5.4 Endorsed Document/s

No Sydney Metro documents were endorsed during the reporting period.

5.5 Complaints

No complaints have been reported to the ER in relation to the investigations previously conducted for Sydney Metro.

5.6 Compliance

5.6.1 Incidents

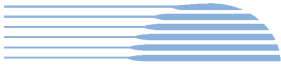
No incidents have been reported to the ER in relation to the investigations previously conducted for Sydney Metro.

5.6.2 Non-compliance

No non compliances have been reported to the ER in relation to the investigations previously conducted for Sydney Metro.

5.6.3 Audits

No audits were conducted during the reporting period on this package or works.



6 STATEMENT OF LIMITATIONS

Healthy Buildings International (HBI) has prepared this report in accordance with the requirements of Condition A30(k) of the Sydney Metro West, Concept and Stage 1 SSI 10038 Approval (11 March 2021), and Condition A32(k) of the Sydney Metro West – The Bays to Sydney CBD SSI 19238057 Approval (24 August 2022).

The report is for the sole purposes of Department of Planning, Housing and Infrastructure (DPHI) and Sydney Metro. It has been prepared based on generally accepted practices and standards at the time it was prepared. No other warranty, expressed or implied, is made as to the professional advice included in this Report. This report did not assess any aspects relating to safety.

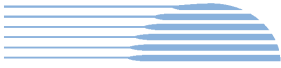
Where the Report indicates that information has been provided to HBI by third parties, HBI assumes no liability for any inaccuracies in or omissions to that information.

This Report was prepared based on the conditions encountered and information reviewed at this time. HBI disclaims responsibility for any changes that may have occurred after this time.

This Report should be read in full. No responsibility is accepted for use of any part of this report in any other context or for any other purpose or by third parties. This Report does not purport to give legal advice. Legal advice can only be given by qualified legal practitioners.

Except as required by law, no third party may use or rely on this Report unless otherwise agreed by HBI in writing. Except as specifically stated in this section, HBI does not authorise the use or findings of this Report by any third party

To the extent permitted by law, HBI expressly disclaims and excludes liability for any loss, damage, cost or expenses suffered by any third party relating to or resulting from the use of, or reliance on, any information contained in this Report. HBI does not admit that any action, liability or claim may exist or be available to any third party.



HBI Healthy Buildings International Pty Ltd

7 APPENDIX A – ER DOCUMENT ENDORSEMENT RECORDS (ETP ONLY)