

[REDACTED]  
Senior Compliance Officer – Government Projects  
Department of Planning, Housing and Infrastructure  
Locked Bag 5022  
PARRAMATTA NSW 2124

7 November 2024  
Ref:201209-ER\_DPHI-October 2024

Dear [REDACTED]

**RE: Sydney Metro - Sydney Metro Western Sydney Airport SSI 10051 – ER Monthly Report for October 2024**

Healthy Buildings International (HBI) submits this report to the Secretary in accordance with:

- Condition A32 (k) of the Sydney Metro Western Sydney Airport, SSI 10051 Approval (23 July 2021, and as modified 14 April 2022)

The attached summary details the key activities undertaken by Environmental Representatives for Sydney Metro Western Sydney Airport for October 2024.

Yours sincerely

[REDACTED]  
Environmental Representative

Cc:

Sydney Metro: [REDACTED]

DPHI: Major Projects Portal

Enclosed:

ER endorsement of St Marys DNVIS Rev 2 STS S3

ER endorsement of Staging Report Rev 11



## **Table of Contents**

<b>1. Advanced and Enabling Works (AEW) .....</b>	<b>3</b>
<b>2. Station Boxes and Tunnelling (SBT) .....</b>	<b>7</b>
<b>3. Surface and Civil Alignment Works (SCAW) .....</b>	<b>12</b>
<b>4. Stations, Systems, Trains, Operations and Maintenance Package (SSTOM) .....</b>	<b>17</b>
<b>5. Statement of Limitations .....</b>	<b>22</b>



### 1. Advanced and Enabling Works (AEW)

Contract Package	Environmental Representative/s
Advanced and Enabling Works (AEW)	[REDACTED]
<b>Key Construction Activities During the Period</b>	
<ul style="list-style-type: none"> <li>▪ <b>St Marys Footbridge (FSM):</b> <ul style="list-style-type: none"> <li>○ Piling works continued on platforms 1/2 and 3/4</li> <li>○ Excavations continued on platforms 1/2 and 3/4</li> <li>○ Piling and excavation occurred in the site compound</li> <li>○ Further excavation and pile breakback occurred on both platforms</li> <li>○ Installation of shoring boxing occurred on both platforms</li> </ul> </li> </ul>	
<b>Key Construction Activities Look Ahead</b>	
<p>Construction activities planned for the upcoming period for the Advanced Enabling Works (AEW) comprise of:</p> <ul style="list-style-type: none"> <li>▪ <b>St Marys Footbridge:</b> <ul style="list-style-type: none"> <li>○ Continuation of excavation on both platforms</li> <li>○ Material loadout following waste classification</li> <li>○ Excavation and pouring the deflection wall in the compound area</li> <li>○ Preparation for possession on Weekend 20 out of hours works (OOHW)</li> </ul> </li> </ul>	
<b>ER Inspections</b>	
<p>There were two (2) inspections of the St Marys Station Footbridge contract undertaken by the ER (AG) in October 2024.</p> <p>Key points/issues raised during the inspections were as follows:</p> <ul style="list-style-type: none"> <li>○ A dedicated refuelling area was established following recent spills in the compound</li> <li>○ Excavations on the platforms are now below the platform level reducing the offsite ERSED risk</li> <li>○ The site compound was set up for piling works which commenced mid-October</li> <li>○ Spoil storage in the compound was managed well, however the ER reminded the project that cross contamination risk needed to be monitored</li> <li>○ A fine layer of dust was present on the compound hardstand, it was noted that a sweeper is engaged every afternoon to clear this material</li> <li>○ From the 21/10/24 – 25/10/24 works on the platforms were suspended due to the planned brownout. These areas were still inspected, and controls were in good condition</li> <li>○ House keeping in the compound to manage litter.</li> </ul>	



**Photos**

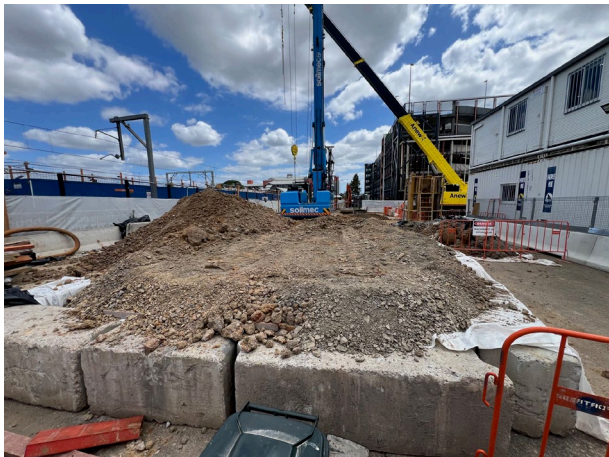
**St Marys Footbridge**



**Compound** - A dedicated refuelling area has been provided following recent spills



**Compound** – The water recycling area was clean with all materials properly stored



**Compound** - Piling spoil is being stored behind jersey barriers, ER requested that spoil is not to breach the concrete barrier boundaries



**Compound** - Piling works progressed without incident in the compound



**Compound** – The hardstand area had a fine layer of dust, the contractor stated that a sweeper is used to clean this at the end of each day. ER requested records



**Platform 1/2** - Water was held in the excavation on platform 1/2 and was pumped to a water cart for disposal



**Platform 3/4** - Spoil is stockpiled at one end of the works area, this material has formed a hard crust and is unlikely to generate dust or runoff

**Platform 3/4** - Unexpected finds were identified during WE14 works. Works stopped and recommenced once the archaeologist provided a signoff

**Endorsed Document/s**

The following documents were endorsed/approved by the ER:

- None

The following documents were provided for information or reviewed with comments provided to Sydney Metro:

- Weekend 20 (WE20), 16 November – 17 November 2024 OOHW Application, rev 0 (21/10/2024)

**Complaints / Incidents / Non-compliance**

No non compliances were reported to the ER during the period

No incidents were reported to the ER during the period:

No complaints were received during the period.

**Audits (specific to packages reported in this report)**

- No audits were completed during the period



### Looking Forward – Core Focus Areas

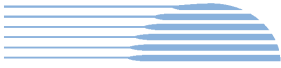
Limited out of hours works occurred on weekend 14 (5<sup>th</sup> and 6<sup>th</sup> October 2024), apart from this all works were undertaken during normal construction hours. A formal notification for the non-compliance with E105 (detected during September 2024) was submitted to DPHI and the ER has requested information regarding the corrective actions and closeout evidence. The environmental control maps have been updated to include all requirements of the HVLR.

#### ER Closing Comments:

With piling and excavation works commencing in the site compound there will need to be increased scrutiny of the potential impacts from spoil handling, washout and mud tracking on to Harris Street. The full time onsite environmental resource displays a positive attitude with all actions requested by the ER resolved and reported back promptly.

The key issues regarding the works moving into the next period include:

- Mud tracking
- Waste management
- Noise
- Heritage impacts
- Interaction with members of the community
- Dust



## 2. Station Boxes and Tunnelling (SBT)

Contract Package	Environmental Representative/s
Station Boxes and Tunnelling (SBT)	[REDACTED]
<b>Key Construction Activities During the Period</b>	
<ul style="list-style-type: none"> <li>▪ St Marys:               <ul style="list-style-type: none"> <li>○ Not inspected and no further inspections planned as SBT package has demobilised from the site and handed over to SSTOM</li> </ul> </li> <li>▪ Orchard Hills:               <ul style="list-style-type: none"> <li>○ Site topsoil/spoil storage has been sent offsite</li> <li>○ Existing topsoil areas are flat and have been sprayed with polymer</li> <li>○ Cross passage material haulage offsite is complete</li> <li>○ Operation and maintenance of ERSED controls</li> <li>○ Tunnel support infrastructure removal</li> <li>○ Water treatment plant operation and disposal to trade waste at Claremont Meadows</li> <li>○ Demobilisation of plant and equipment from laydown areas</li> <li>○ Office compound is being demobilised</li> </ul> </li> <li>▪ Claremont Meadows Services Facility:               <ul style="list-style-type: none"> <li>○ Water treatment plant operating</li> <li>○ Waterproofing in shaft</li> <li>○ Storage of surplus construction materials from other northern sites</li> <li>○ Cross passage ramp soil storage and delivery</li> <li>○ Concrete deliveries to tunnel for invert work and shotcreting</li> </ul> </li> <li>▪ Bringelly Services Facility:               <ul style="list-style-type: none"> <li>○ Storage of surplus construction materials from other southern sites</li> <li>○ Cross passage ramp soil delivery and removal</li> <li>○ Concrete deliveries to tunnel</li> </ul> </li> <li>▪ Aerotropolis:               <ul style="list-style-type: none"> <li>○ Not inspected and no further inspections planned as SBT package has demobilised from the site and handed over to SSTOM</li> </ul> </li> </ul>	
<b>Key Construction Activities Look Ahead</b>	
<ul style="list-style-type: none"> <li>▪ Claremont Meadows Services Facility:               <ul style="list-style-type: none"> <li>○ Continue erosion and sediment controls operation and maintenance</li> <li>○ Continue Water Treatment Plant operation and maintenance</li> <li>○ Storage of surplus construction materials and load out</li> <li>○ Ramp spoil haulage offsite</li> <li>○ Concrete deliveries for invert construction, including outside Construction Hours</li> <li>○ Expected to handover to SSTOM in November 2024</li> </ul> </li> <li>▪ Orchard Hills:               <ul style="list-style-type: none"> <li>○ Operation and maintenance of ERSED controls</li> <li>○ Tunnel support infrastructure removal</li> <li>○ Tunnel portal concrete pours</li> </ul> </li> </ul>	



- Water pumped to Claremont Meadows disposed to trade waste
- Demobilisation of plant and equipment from laydown areas
- Site demobilisation
- Expected handover to SSTOM in November 2024
- Bringelly Services Facility:
  - Continue Erosion sediment controls operation and maintenance
  - Tunnelling support activities, including concrete deliveries outside Construction Hours
  - Handover to SSTOM in December 2024

**ER Inspections**

There were two (2) routine ER Inspections conducted on 10/10/24 and 24/10/24 by the ER (AG).

Key points/ issues raised during the inspections were as follows:

- Orchard Hills is in the process of demobilising and has minimal works being undertaken
- Bringelly - concrete works as the main activity, issues raised during the previous inspection were actioned
- Housekeeping remained an important aspect to manage across all sites
- Exit points required monitoring and additional cleaning at all sites
- Dry conditions required additional focus on dust management across the sites
- As materials are removed or relocated within the sites, ER requested appropriate and necessary controls are maintained
- Generally, the SBT project was in a good state with most controls being effective

ER inspections are on a fortnightly cycle.

**Photos**



**Claremont Meadows** – Concrete pours continued down the shaft, washout facilities were present



**Claremont Meadows** – Water cannons were in operation during waste concrete loadout





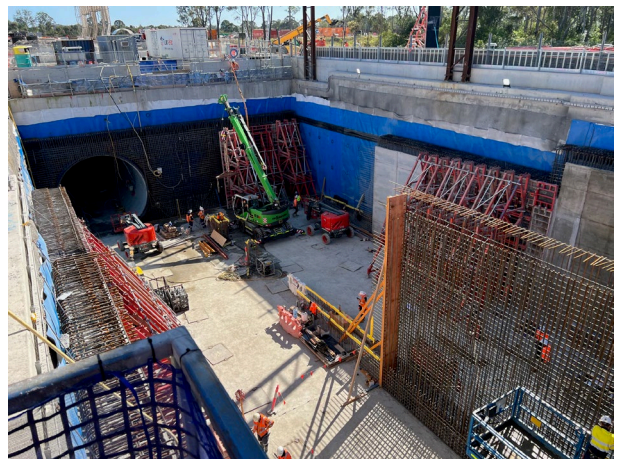
**Claremont Meadows** – Waste timbers from the site storage area are to be given to organisations who will reuse or repurpose them



**Claremont Meadows** – The NW corner is now being used for construction forms, concrete pumping has been relocated to the other side of the shaft



**Orchard Hills** – Topsoil was loaded out from the site, the S143 process has been implemented



**Orchard Hills** – Reinforcing works continued in the tunnel, awaiting concrete pours



**Orchard Hills** – Works continue in the dive, with a partition wall being constructed



**Orchard Hills** – The remaining topsoil has been sprayed with polymer



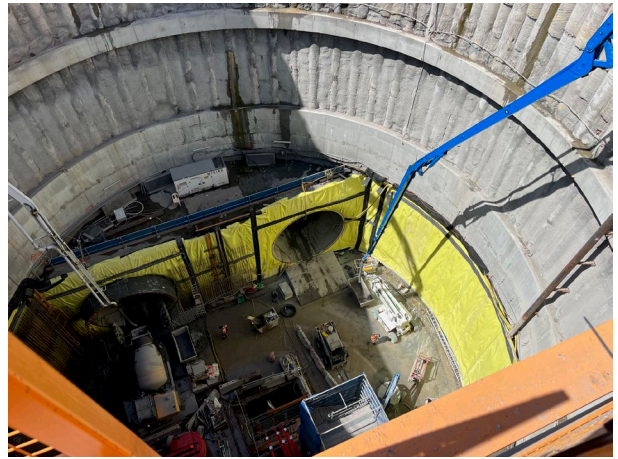
**Orchard Hills** – The two small holding basins have been retained to be used should the need arise



**Orchard Hills** – The wheel wash was decommissioned, mud tracking will need to be monitored and removed via alternative means



**Bringelly** – The noise wall remains in place to accommodate OOHW pours



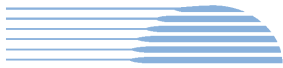
**Bringelly** – Concreting works continue in the shaft at Bringelly



**Bringelly** – The ACM stockpile has been approved to be respread over the existing laydown area



**Bringelly** – The internal haul roads were dusty during the inspection, ER requested water carts to be available as required to manage the dust levels



<b>Endorsed Document/s</b>
<p>The following documents were endorsed/approved by the ER:</p> <ul style="list-style-type: none"><li>▪ None during the period</li></ul> <p>The following documents were provided for information or review as applicable:</p> <ul style="list-style-type: none"><li>▪ 6-Monthly Surface Water Monitoring Report: April to October 2024 (rev 1) 28/10/24.</li></ul>
<b>Complaints / Incidents / Non-compliance</b>
<p>There were no Non-Compliances with the Approval raised by or reported to the ER this period</p> <p>There was one (1) incident of note identified by or reported to the ER this period.</p> <ul style="list-style-type: none"><li>▪ One (1) regarding a hydrocarbon spill at the Bringelly site</li></ul> <p>No complaints were received during the period.</p>
<b>Audits (specific to packages reported in this report)</b>
<ul style="list-style-type: none"><li>▪ No audits were completed during the period</li></ul>
<b>Looking Forward – Core Focus Areas</b>
<p>Orchard Hills has been demobilising with the intention that this site will be handed over to SSTOM in November 2024, as a result the risk profile for this site has reduced significantly. Claremont Meadows and Bringelly are still undertaking works relating to spoil removal, concrete pours and waste management. All sites need to continue to implement mud tracking mitigation measures as this is an issue that has been reported in the recent ER inspections.</p> <p><b>ER Closing Comments:</b></p> <p>Resources continue to leave the project, and the ER is stressing the point that procedures and processes need to continue to be implemented with handovers specifically calling out responsibilities. The application of surface treatment, i.e. Polymer binder has been a positive for SBT and the ER is expecting that this treatment will continue to the conclusion of the works.</p>

### 3. Surface and Civil Alignment Works (SCAW)

Contract Package	Environmental Representative/s
Surface and Civil Alignment Works (SCAW)	
<b>Key Construction Activities During the Period</b>	
<ul style="list-style-type: none"> <li>▪ Patons Lane               <ul style="list-style-type: none"> <li>○ Landscaping continues, some failed areas require reapplication</li> <li>○ Weed spraying continuing</li> </ul> </li> <li>▪ SMF               <ul style="list-style-type: none"> <li>○ Geotechnically unsuitable material has finished being added to PS105</li> <li>○ Dam works have finished</li> <li>○ Landscaping continues at Blaxland Creek</li> </ul> </li> <li>▪ Defence Land               <ul style="list-style-type: none"> <li>○ Drainage works ongoing</li> <li>○ Abutment construction towards the Warragamba pipeline is complete</li> <li>○ Landscaping works are continuing throughout the alignment</li> </ul> </li> <li>▪ Luddenham Station               <ul style="list-style-type: none"> <li>○ Luddenham Rd roundabout may need additional works</li> <li>○ Earthworks and drainage structures</li> <li>○ Viaduct segment installation ongoing</li> </ul> </li> <li>▪ Luddenham Road South               <ul style="list-style-type: none"> <li>○ Area has been handed over to SSTOM</li> </ul> </li> <li>▪ M12 to Cosgrove's Creek               <ul style="list-style-type: none"> <li>○ Area has been handed over to SSTOM</li> </ul> </li> <li>▪ Elizabeth Drive               <ul style="list-style-type: none"> <li>○ Topsoiling and hydromulching continues</li> <li>○ Works are occurring underneath the M12 bridge</li> </ul> </li> </ul>	
<b>Key Construction Activities Look Ahead</b>	
<ul style="list-style-type: none"> <li>▪ Patons Lane:               <ul style="list-style-type: none"> <li>○ Finalising rehabilitation works</li> <li>○ Installation of road furniture e.g. barriers</li> <li>○ Weed control continues</li> </ul> </li> <li>▪ Stabling and Maintenance Facility (SMF) Orchard Hills:               <ul style="list-style-type: none"> <li>○ Rehabilitation works ongoing</li> <li>○ Testing of PS105 is complete, results will be sent to the auditor</li> </ul> </li> <li>▪ Defence Land:               <ul style="list-style-type: none"> <li>○ Landscaping works are ongoing</li> <li>○ Drainage at Unnamed Creek ongoing</li> <li>○ Minor earthworks continue</li> </ul> </li> <li>▪ Luddenham Station:               <ul style="list-style-type: none"> <li>○ Rehabilitation of disturbed areas</li> <li>○ Viaduct segment placement to continue</li> </ul> </li> </ul>	

- Luddenham Road South:
  - Area has been handed over to SSTOM
- M12 to Cosgroves Creek:
  - Area has been handed over to SSTOM
- Elizabeth Drive:
  - Detailed earthworks to continue
  - Topsoiling and hydromulching
  - Permanent alignment drainage works ongoing

**ER Inspections**

There were two (2) ER Inspections conducted on 03/10/24 and 31/10/24 by the ER (AG).

Key points/issues raised during these inspections were as follows:

- The site is well managed with a reduced risk profile. Ongoing aspects that need to be monitored and managed include: ERSED controls, dust, mud tracking, weeds and use of environment permits
- The area around the M12 bridge is largely complete, however ERSED risk remains until the catchment is stabilised
- Some drainage lines needed to have built up sediment removed
- Grout operations at Luddenham North were observed to be messy and needed to be managed more effectively
- The Defence site has had a significant amount of landscaping works completed
- Failure of revegetation on the batters adjacent to Patons Lane needs to be discussed with Sydney Metro to determine an appropriate alternative stabilisation arrangement
- Wheel washes at Patons Lane and Blaxlands Creek have been removed. The wheel washes are required to be implemented to construction completion.

ER inspections are on a fortnightly cycle.

**Photos**



**M12 Bridge** - Works progress on the permanent drainage lines



**M12 Bridge** - The main culvert has been finalised and the surrounding catchment stabilised



**M12 Bridge** – The drainage line adjacent to the M12 is in good condition with scour protection



**M12 Bridge** – The revegetation under the M12 bridge is showing limited signs of success, the ER has requested that the contractor discuss this with Sydney Metro



**Luddenham North** – Parapets being lifted onto the viaduct



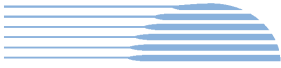
**Luddenham North** - Viaduct works continue in a southwards direction



**Luddenham North** - The batters are being shaped with topsoil in preparation for the application of hydromulch



**Luddenham North** – Grout has spilt outside of the containment structures. ER requested a cleanup and evidence of additional containment



**Defence** - Landscaping works have occurred along the defence alignment



**Defence** - Hay bales have been placed across the culvert in Unnamed Creek.



**Patons Lane** - Areas of failed revegetation remain along the batters adjacent to Patons Lane



**Patons Lane** - Two wheel washed were removed, one at Patons Lane, the other at Lansdowne Rd



**PS105** - Organic rich material is being applied to PS105 as per the requirements of the RAP



**Blaxlands Creek** - Rehabilitation of Blaxlands Creek has been successful



<b>Endorsed Document/s</b>
<p>The following documents were endorsed/approved by the ER:</p> <ul style="list-style-type: none"><li>▪ None for the period</li></ul> <p>The following documents were provided for information or reviewed:</p> <ul style="list-style-type: none"><li>▪ None for the period</li></ul>
<b>Complaints / Incidents / Non-compliance</b>
<p>There were no Non-Compliances with the Approval raised by or reported to the ER this period</p> <p>There was one (1) incident of note identified by or reported to the ER this period.</p> <ul style="list-style-type: none"><li>▪ One (1) hydrocarbon spill was identified at Luddenham North on 31/10/24</li></ul> <p>There were no complaints reported to the ER this period:</p>
<b>Audits (specific to packages reported in this report)</b>
<ul style="list-style-type: none"><li>▪ No audits were completed during the period</li></ul>
<b>Looking Forward – Core Focus Areas</b>
<p>There has been a concerted effort to complete landscaping activities across the remaining portions. As a result weed management has also improved. Resources have started to exit the project and the ER has requested that the SCAW environment manager ensure that any changes in personnel are adequately briefed on the environmental processes and permits relevant to the role.</p> <p><b>ER Closing Comments:</b> The project continues to display a high level of compliance with most aspects well managed. Key environmental issues that will require continual monitoring and management include:</p> <ul style="list-style-type: none"><li>▪ Dust</li><li>▪ Mud tracking</li><li>▪ Erosion and Sediment control</li><li>▪ Water discharge</li><li>▪ Compliance with the RAP at PS105</li></ul>



#### 4. Stations, Systems, Trains, Operations and Maintenance Package (SSTOM)

Contract Package	Environmental Representative/s
Stations, Systems, Trains, Operations and Maintenance Package (SSTOM). Contractor Parklife Metro (PLM)	
<b>Key Construction Activities During the Period</b>	
<ul style="list-style-type: none"> <li>▪ St Mary’s Station (STM):               <ul style="list-style-type: none"> <li>○ Waterproofing is ongoing</li> <li>○ Concrete pours for the base and walls are ongoing</li> <li>○ Shroud installed on tower crane one</li> </ul> </li>   <li>▪ Orchard Hills Station (OHE):               <ul style="list-style-type: none"> <li>○ Concrete pours for the base and walls are ongoing</li> <li>○ Waterproofing ongoing</li> <li>○ Sump construction in the box completed</li> <li>○ Sealing of overflow carpark commenced</li> </ul> </li>   <li>▪ Stabling and Maintenance Facility (SMF):               <ul style="list-style-type: none"> <li>○ Deliveries ongoing from the Western Tunnelling Package (Metro West) (almost completed).</li> <li>○ Earthworks and FRP ongoing for PAD and sub-station</li> <li>○ Permanent stormwater drainage ongoing</li> <li>○ Connection of 132kv power ongoing, moving close to Patons Lane</li> </ul> </li>   <li>▪ Luddenham Station (LUD):               <ul style="list-style-type: none"> <li>○ Minor excavation of the station and installation of ground services continue</li> <li>○ Extension of light vehicle car park ongoing, chip seal postponed</li> <li>○ Crane pad concrete pours commenced</li> </ul> </li>   <li>▪ Bradfield Station (BRD) (Formerly Aerotropolis Core AEC):               <ul style="list-style-type: none"> <li>○ Base slab pours complete, wall pours ongoing</li> <li>○ Waterproofing ongoing</li> <li>○ Backfilling of clean water swale and new access road construction ongoing</li> </ul> </li>   <li>▪ LineWide (Portion 3)               <ul style="list-style-type: none"> <li>○ Site establishment works commenced</li> <li>○ Crane pad concrete pours commenced</li> </ul> </li>   <li>▪ Project Wide:               <ul style="list-style-type: none"> <li>○ Portion N4 (OHE North) handover expected November / December</li> <li>○ Linewide Portion 4 handover expected December</li> </ul> </li> </ul>	
<b>Key Construction Activities Look Ahead</b>	
<ul style="list-style-type: none"> <li>▪ St Mary’s Station (STM):               <ul style="list-style-type: none"> <li>○ Slab pours ongoing, likely to utilise out of hours for larger pours</li> <li>○ Tower crane 2 erection to occur (delayed)</li> <li>○ Precast beam installation works to commence late December</li> </ul> </li> </ul>	

- Waterproofing ongoing
- Orchard Hills Station (OHE):
  - Waterproofing and base slab pours continue
  - Batch plant continues to be used. Pending EPA approval for 5 am to 10-pm operation Monday to Friday, and 6 am to 6 pm Saturday.
  - Site establishment surface works to commence once SBT passes N4 to PLM
- Stabling and Maintenance Facility (SMF):
  - Ongoing importation of material to continue (mostly completed)
  - Connection of 132kv power to continue.
  - Construction of the transformer to continue
  - Permanent stormwater drainage to continue
  - Building slab pours ongoing. Proposed extension of hours with EPA
  - Patons Lane underboring works to occur
- Luddenham Station (LUD)
  - Car park extended and resurfaced
  - Detailed excavation of the station area minor works
  - Concrete works ongoing
- Bradfield Station (BFD) (previously Aerotropolis Core - AEC):
  - FRP works and wall pours
  - Waterproofing
  - New access road construction ongoing
  - AEC discharge pipeline (currently descoped)
  - Water treatment plant (WTP) to be demobilised. Water to be treated by another means (TBC)
- Project-wide
  - Weed control ongoing
  - Portion N4 and Portion 4 handover pending.

### ER Inspections

There were three ER inspections conducted during this period, on the 1, 15 and 29 of October.

Key points/issues raised during these inspections were as follows:

- STM – It was noted that contractor vehicles continued to park outside of the Phillip Street site entrance. PLM has placed signs reminding contractors and the CTMP review is ongoing to include a parking monitoring strategy.
- STM – minor rubbish noted in contractor car park to be removed.
- STM – noise mitigation for the tower crane was ongoing. It was noted that an arrangement was in place with TC1 shroud installed and TC2 will be installed before setup. It was noted that noise from TC1 appeared to have significantly reduced and PLM will undertake a noise assessment to update noise models.
- STM – minor graffiti was pending removal from the hoarding. A graffiti removal specialist is being onboarded by PLM.
- STM – PLM had taken over possession of an ancillary facility immediately adjacent to the Goods Shed. An assessment of impacts is currently being undertaken for inclusion in the CEMP.



- OHE – concrete batch plant operational and a tonal alarm was observed. PLM has been investigating switching to a non-tonal alarm with Boral.
- SMF – A discussion with PLM to consider using quieter plant was undertaken, with PLM reminded that this is a noise mitigation measure that should be considered for upcoming out of hours work.
- Portion 3 – Site setup continued and ERSED was installed. Polymer was pending application to exposed areas (i.e. laydown)
- General - ERSED was being managed well across all sites with only minor maintenance required.
- General – Weed spraying continued and mapping of remaining areas is to be completed by PLM.

**Photos**



**STM – Site parking signs**



**STM – Ancillary facility adjacent to Goods Shed**



**OHE -Water proofing and concrete pours in the box continued**



**OHE – sealing contractor overflow carpark**



**SMF – Laydown areas were maintained**



**ORH – Form-Reo-Pour (FRP) continued for the substation**



**LUD** – Lift shaft construction and FRP continued



**LUD** – Laydown areas were maintained. A minor oil spill was observed and cleaned during the inspection



**Portion 3** – Car park had been chip-sealed



**Portion 3** – ERSED bunds installed, preparation for laydown continued



**BFD** – backfilling of the clean water diversion and preparation for new road access



**BFD** – redirection of clean water swale under construction

**Endorsed Document/s**

The following documents were endorsed/approved by the ER:

- St Marys DNVIS Rev 2 STS S3
- ER endorsement of Staging Report Rev 11

The following documents were provided for information or reviewed with comments provided to Sydney Metro:

- ACHMP Rev 10
- SMWSA SSTOM Submissions Board, Submissions Forecast & ICD Submissions Board - October 2024



- OOH-12 Permit SMF Bulk Power Supply Enabling Works assessed to be NML compliant
- SM-WSA SSTOM Independent Audit Report 2 (IA2) SSD 10051 August 2024
- Orchard Hills Station (OHE) - Detailed Noise and Vibration Impact Statement - Concrete Works OOH and Batch Plant Report - Rev 03
- STM Station - Detailed Noise and Vibration Impact Statement - Concrete Works (Rev 02)
- Bradfield Station (AEC) – Concrete Works OOH -Detailed Noise and Vibration Impact Statement - Rev 03
- Flora and Fauna Management Sub Plan - Annual Review (Rev 02.03)
- Noise and Vibration Construction Monitoring Report - February to July 2024 - Rev00
- Noise and Vibration Construction Monitoring Report - February to July 2024 - Rev01
- STM Assessment of modification to the ancillary facility adjacent to Glossip Street
- Surface Water Quality Construction Monitoring Report Rev00
- OOHW Register Updated: 20241001
- Linewide DNVIS Rev 00
- Air Quality Construction Monitoring Report February to July 2024

#### **Complaints / Incidents / Non-compliance**

There were no non-compliances with the Approval reported to the ER during this period:  
There were no incidents of note identified by or reported to the ER during this period.  
There were no complaints were reported to the ER during the period.

#### **Audits (specific to packages reported in this report)**

- No audits were undertaken during this period.

#### **Looking Forward – Core Focus Areas**

The focus continues to be the review and implementation of the CEMP and sub-plans, with a particular focus on upcoming out-of-hours work, noise mitigation and preparation for additional site handovers.

**ER Closing Comments:** The project continues to display a high level of compliance with the sites generally well managed. Key environmental issues raised with PLM include:

- Dust
- Water management
- Erosion and Sediment Control
- Noise (focusing on OOH works)
- Contractor parking

## 5. Statement of Limitations

Healthy Buildings International (HBI) has prepared this report in accordance with the requirements of Condition A32 (k) of the Sydney Metro Western Sydney Airport, Concept and Stage 1 SSI 10051 Approval (23 July 2021). The report is for the sole purposes of the Department of Planning, Housing and Infrastructure (DPHI) and Sydney Metro. It has been prepared based on generally accepted practices and standards at the time it was prepared. No other warranty, expressed or implied, is made as to the professional advice included in this Report. This report did not assess any aspects relating to safety.

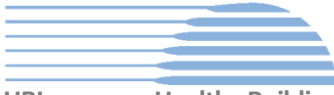
Where the Report indicates that information has been provided to HBI by third parties, HBI assumes no liability for any inaccuracies in or omissions to that information.

This Report was prepared based on the conditions encountered and information reviewed at this time. HBI disclaims responsibility for any changes that may have occurred after this time.

This Report should be read in full. No responsibility is accepted for use of any part of this report in any other context or for any other purpose or by third parties. This Report does not purport to give legal advice. Legal advice can only be given by qualified legal practitioners.

Except as required by law, no third party may use or rely on this Report unless otherwise agreed by HBI in writing. Except as specifically stated in this section, HBI does not authorise the use or findings of this Report by any third party

To the extent permitted by law, HBI expressly disclaims and excludes liability for any loss, damage, cost or expenses suffered by any third party relating to or resulting from the use of, or reliance on, any information contained in this Report. HBI does not admit that any action, liability or claim may exist or be available to any third party.




HBI

Healthy Buildings International Pty Ltd  
A.C.N. 003 270 693 A.B.N. 39 003 270 693

Suite 2.06, Level 2  
29-31 Solent Circuit  
Norwest NSW 2153

Tel: 61 (02) 9659 5433  
e-mail: [hbi@hbi.com.au](mailto:hbi@hbi.com.au)  
Web: [www.hbi.com.au](http://www.hbi.com.au)

28 October 2024

  
Director Sustainability Environment & Planning SMWSA  
Sydney Metro  
Transport for NSW  
PO Box K659  
HAYMARKET NSW 1240

Ref: 201209(d)\_DNVIS\_STTOM\_STM\_0003

Dear 


**RE: Approval of the Sydney Metro Western Sydney Airport, STTOM St Mary DNVIS**

Thank you for providing the updated Sydney Metro Western Sydney Airport – STTOM Detailed Noise and Vibration Impact Statement SMWSASSM-PLD-STM-SN100-NV-RPT-000003 (PLM Rev2, VMS Rev3; document Rev2 STS S3), dated 3 October 2024 (the DNVIS) for Environmental Representative (ER) review and approval. The DNVIS was updated to extend out-of-hours concrete works, over-size / over mass deliveries and installation of precast beams.

As the Sydney Metro approved delegate under Section 1.4.4 of the Construction Noise and Vibration Standard v4.3 (the CNVS), I have reviewed the DNVIS and provided comments, and now consider the DNVIS consistent with the CNVIS requirements and the DNVIS is approved for the Sydney Metro Western Sydney Airport project (SSI – 10051 July 23, 2021).

I remind you that under the CNVS, should the scope of work or the timing of works change, the Principal Contractor must update the DNVIS and seek subsequent approval by the ER or project-approved acoustic consultant.

Yours sincerely



  
Environmental Representative – Sydney Metro Western Sydney Airport



HBI

Healthy Buildings International Pty Ltd

A.C.N. 003 270 693

A.B.N. 39 003 270 693

Suite 2.06, Level 2  
29-31 Solent Circuit  
Norwest NSW 2153

Tel: 61 (02) 9659 5433  
e-mail: [hbi@hbi.com.au](mailto:hbi@hbi.com.au)  
Web:

[www.hbi.com.au](http://www.hbi.com.au)

11 October 2024

Director

Director Sustainability Environment & Planning SMWSA

Sydney Metro

Transport for NSW

PO Box K659

HAYMARKET NSW 1240

Ref: 201209\_SR R11.0

Dear [REDACTED]

**RE: Endorsement of the Sydney Metro Western Sydney Airport Staging Report (Rev. 11)**

Thank you for providing the Sydney Metro Western Sydney Airport – CSSI Staging Report, Revision 11, dated 11 October 2024 (the Staging Report) for Environmental Representative (ER) review and endorsement as required by the Condition of Approval A11 of the Sydney Metro Western Sydney Airport project (SSI – 10051 July 23 2021, Mod 1 14 April 2022).

Revision 11.0 of the Staging report updates include:

- Minor update to definitions and abbreviations
- Updated timing of stages
- Administrative updates related to the renaming of Aerotropolis to Bradfield Station
- review of the applicability of Conditions E12 to E18 corrections in Appendix B to reflect their applicability to the SSTOM stage.
- Review the applicability of REMM NA13 corrections in Appendix D to reflect their applicability to the SSTOM stage.

As an approved ER for the Sydney Metro Western Sydney project, I have provided comment on the Staging Report for the risk assessment required under Condition A11(e) and how it influences the nominated allocation of project requirements, namely the Conditions of Approval (CoA) and the Revised Environmental Mitigation measures (REMMs), Environmental Performance Outcomes (EPOs) and the obligations under the Construction Environmental Management Framework (CEMF).

In addition to the above, I have also provided comments on the adequacy of the Staging Report to satisfy requirements A11 (a) – (d).



It should be noted that the ER review of risks and the allocation of requirements is based on information known to the ER at the time of review and will be subject to update as the project evolves. I consider the Staging Report, including the Risk Assessment, appropriate for submission to the Planning Secretary for information as required by Condition of Approval A10.

Yours sincerely



Environmental Representative – Sydney Metro Western Sydney Airport