

Notification – Orchard Hills Metro Station and the Stabling and Maintenance Facility

Sydney Metro is Australia’s biggest transport project.

December 2024 and January 2025

Sydney Metro – Western Sydney Airport is the new metro railway line which will service Greater Western Sydney and the new Western Sydney International (Nancy-Bird Walton) Airport. A city-shaping project, the new 23-kilometre metro railway will connect Bradfield city centre with St Marys in the north – where customers can connect to the existing Sydney Trains suburban T1 Western Line. The NSW and Australian governments have a shared objective of having Sydney Metro – Western Sydney Airport operational when the airport opens for passenger services.

CPB Contractors and United Infrastructure are delivering the Surface and Civil Alignment (SCAW) works. CPB Contractors Ghella are delivering Station Boxes and Tunnelling (SBT) and Parklife Metro consortium are delivering the Stations, Systems, Trains, Operations and Maintenance (SSTOM) works. See the list below for the work activities at Orchard Hills during December and January. See maps for the work locations.

Stations, Systems, Trains, Operations and Maintenance works include:

Orchard Hills Metro Station:

- waterproofing, formwork, steel fixing and concrete pours inside the station box and drainage system
- completion of the concrete batching plant on the eastern end of the site, which will provide concrete services to multiple SSTOM sites and locations
- surveying and geotechnical investigations, including potholing, non-destructive digging and testing along local surrounding roads to inform utility designs.
- road surface and restoration works, including filling in potholes on Kent and Lansdowne Road.

Stabling and Maintenance Facility:

- major earthworks including importing materials, excavations and compacting for the rail areas, and substation, operations control centre buildings and the maintenance and administration building
- construction of a new 132kV powerline, commencing from the future substation area, working towards and on Patons Lane
- major drainage works including excavations, installing pits and pipes, and backfilling
- site-wide concrete works, including formwork, steel fixing for various structures such as the substation, Maintenance Administration Building, Operations Control Centre, and across the site
- expansion of office facilities
- commencement of Combined Services Route (CSR) and trunk service installation.

Surface and Civil Alignment works include:

- finishing works including maintenance and landscaping
- fortnightly aerial land surveys and site photography of the surface alignment.

Station Boxes and Tunnelling works include:

- CPBG handed over the final portion of the Orchard Hills site to the SSTOM contractor in November 2024
- construction work is continuing within the tunnels between Orchard Hills Metro Station and St Marys Station, with access from the Claremont Meadows Services Facility site.

Out-of-hours work activity includes:

- delivery of over-sized equipment and machinery and materials to the Orchard Hills Metro Station and the Stabling Maintenance Facility sites
- extended work hours for excavation, steel fixing, concrete pours and concrete finishing works inside the station box at the Orchard Hills site and across various structures including the substation area at the Stabling Maintenance Facility
- dewatering activities at the Orchard Hills and Stabling Maintenance Facility sites
- concrete batching plant operations at the Orchard Hills Metro Station site
- construction of a new 132kV powerline on Patons Lane including excavations, trenching and backfilling, cable laying, and installation of utility services
- Road surface and restoration works, including filling in potholes on Kent and Lansdowne Road

Work hours:

Standard construction hours are **Monday to Friday** from **7am to 6pm** and **Saturdays** from **8am to 1pm**.

Some work will also be required to take place outside our standard construction hours to minimise traffic impacts or to ensure the safety of pedestrians, motorists and our workers. Out-of-hours work activities will be carried out in line with the project Environmental Protection Licence, Road Occupancy Licences, and Transport for NSW requirements.

Impacted surrounding residents and businesses will be notified in advance of any out-of-hours work.

What to expect:

- mitigation measures will be in place to minimise impacts including installing noise blankets, where feasible, respite periods during high noise activities, noise and vibration monitoring, and water carts for dust suppression
- increased light and heavy vehicle movements on surrounding roads, and local road closures. All vehicles will be turned off when not in use, non-tonal reversing alarms will be fitted to plant and machinery and trucks will avoid reversing into and on site, where feasible
- temporary lighting to ensure a safe worksite will be directed away from properties
- communication will be limited to radios only when moving and unloading equipment, with no use of horns or loud radios
- traffic control and signage to safely assist motorists, pedestrians, and cyclists.

Equipment used:

Equipment used will include, but is not limited to, excavators, cranes, dozers, graders, rollers, vacuum truck, water carts, heavy and light site vehicles, generators, survey equipment, traffic management devices, concrete agitators, pneumatic drills, concrete saws, bobcats, chainsaws, telehandler and powered hand tools.

Changes to traffic, pedestrian, and cyclist routes:

During these works, traffic control will be in place to assist motorists, pedestrians, and cyclists with any changes to traffic conditions. This may include contraflow and stop-slow traffic controls. The time of these changes will vary and are dependent on road authority approvals.

Access to driveways and buildings will be maintained at all times. Residents will be separately notified if access to driveways will be affected, or access to private property is required.

Three monthly out-of-hours lookahead activities:

| Activity | Equipment | Work hours | Timing |
|--|---|---|--------------------------|
| SSTOM works – Orchard Hills Metro Station site | | | |
| Concrete pours and finishing works station box base slab and walls | Concrete pump, vibrators, concrete trucks, generators, and lighting towers. | 6pm to 12am, 5am – 7am- Monday to Friday 6am to 6pm, Saturdays | Ongoing - 2024 |
| Concrete batching plant operations | Concrete trucks, generators, mixers, compressors and lighting towers. | 5am to 10pm, Monday - Friday. 6am to 6pm Saturday | Ongoing |
| Oversized plant and equipment activities | Traffic management, light and heavy vehicles, generators, lighting towers and mobile cranes. | 10pm to 7am | Ongoing |
| Dewatering activities | Water treatment plant, water pumps, light vehicles, generators and lighting towers. | As required | Ongoing |
| SSTOM works – Stabling Maintenance Facility site | | | |
| Extended work hours for major earthworks | Excavators, dump trucks, graders, compactors, drum rollers, dozers, trucks, generators and lighting towers. | 6am to 7am, Monday to Friday 1pm to 6pm, Saturdays | On-going |
| Concrete pours and finishing works, steel fixing | Concrete pump, vibrators, concrete trucks, generators, and lighting towers. | 6pm to 12am, 4am to 7am Monday to Friday 6am to 6pm, Saturday | Ongoing - 2024 |
| Dewatering activities | Water treatment plant, water pumps, light vehicles, generators and lighting towers. | As required | Ongoing |
| Long weekend possession - 132kv power supply installation on Patons Lane | Excavators, trucks, mobile cranes, compactors, vibrators, generators, and lighting towers. | 6pm, Friday 29 November to 6pm, Tuesday 3 December 2024 | November – December 2024 |
| SCAW works – Orchard Hills | | | |
| Earthworks at Unnamed Creek | Light and heavy vehicles, heavy machinery, generators and lighting towers | 6pm to 7am Monday to Friday | December 2024 |

Feedback:

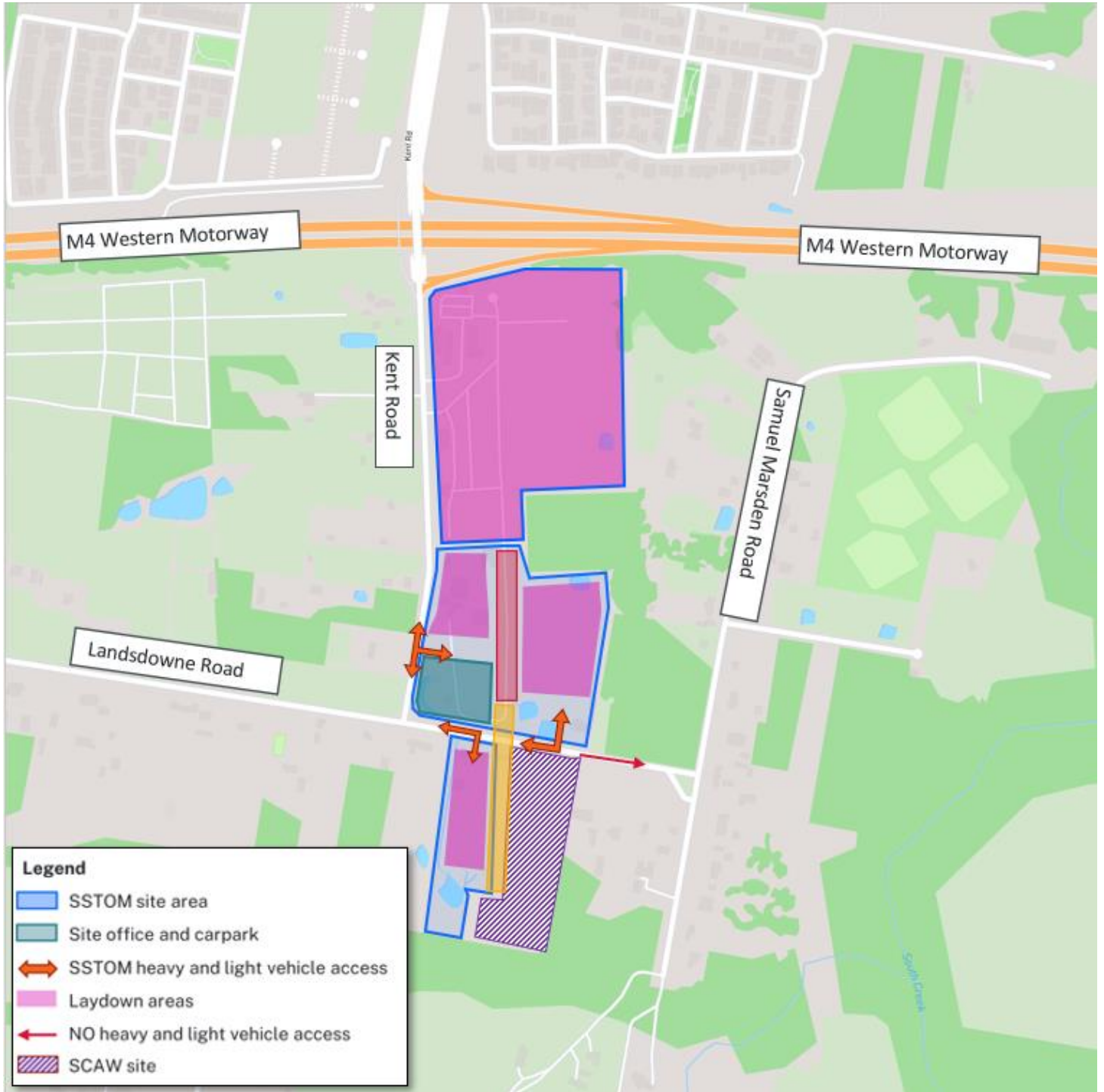
Detailed Noise and Vibration Impact Statements (DNVIS) have been prepared, including proposed mitigation measures based on noise modelling. Your feedback on appropriate respite periods or mitigation measures is encouraged. The SBT, SCAW and SSTOM Community Engagement strategies are now online.

Please visit www.cpbcontractors.cc/SBTstrategy, www.cpbcontractors.cc/SCAWstrategy or www.parklifemetro.com.au/SSTOMCCS to view the respective strategy and contact us to provide feedback.

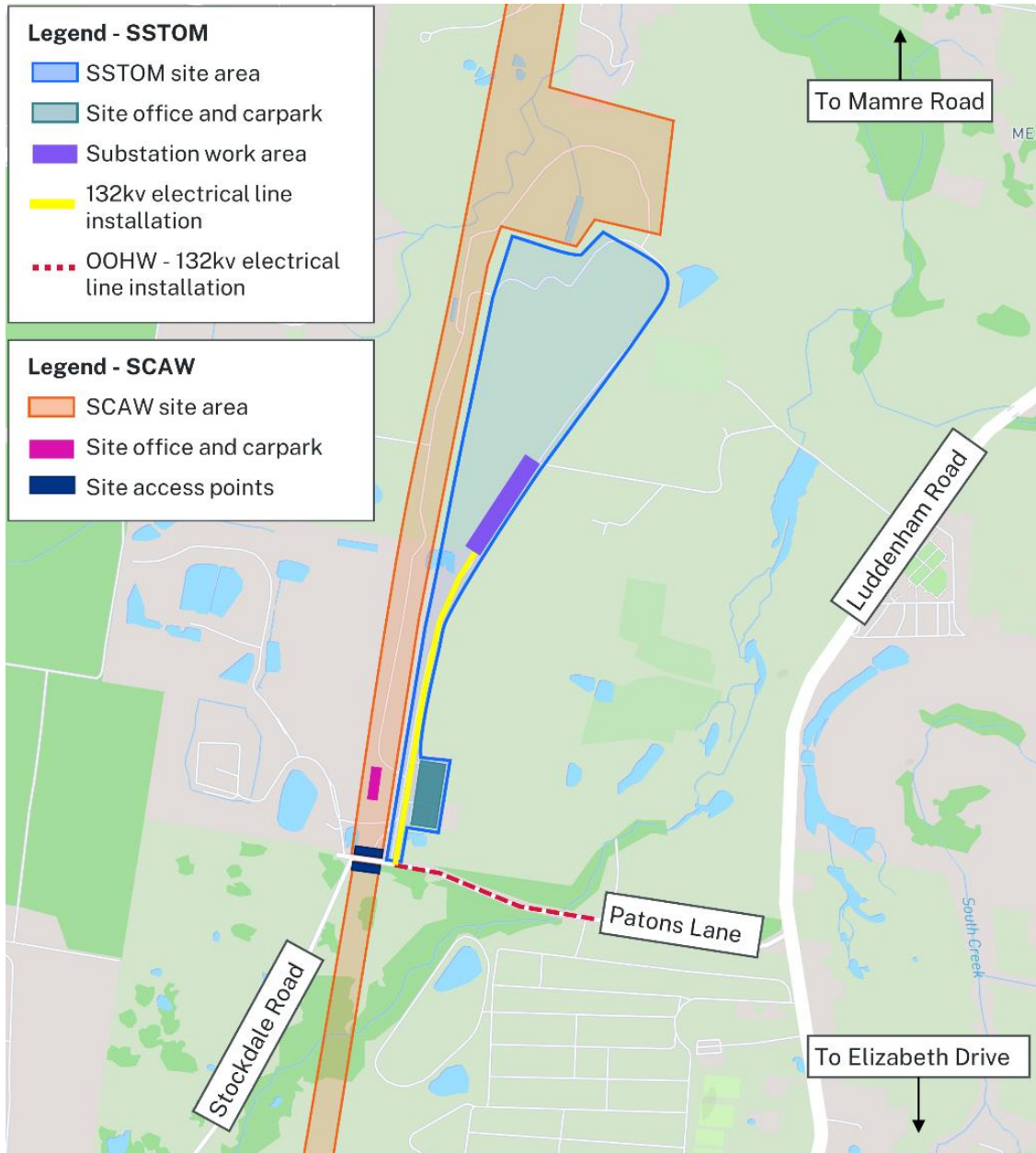
If you would prefer to receive updates by email, please let us know via sydneymetroswa@transport.nsw.gov.au and we will add you to the distribution list.

Thank you for your cooperation while we complete this essential work.

Orchard Hills Metro Station work location:



Stabling and Maintenance Facility work location:



Sydney Metro has launched Sydney Metro Connect – a new way to stay informed.

Access information in over 100 languages Download **Sydney Metro Connect** from the App store™ or get it on Google Play™.

For more information contact



24-hour Community Information Line **1800 717 703**



sydneymetrowsa@transport.nsw.gov.au



Sydney Metro – Western Sydney Airport
PO Box K659, Haymarket NSW 1240



If you need help understanding this information, please contact the Translating and Interpreting Service on **131 450** and ask them to call us on **1800 717 703**.