

[REDACTED]
Senior Compliance Officer – Government Projects
Department of Planning, Housing and Infrastructure
Locked Bag 5022
PARRAMATTA NSW 2124

4 October 2024
Ref:201209-ER_DPHI-September 2024

Dear [REDACTED]

RE: Sydney Metro - Sydney Metro Western Sydney Airport SSI 10051 – ER Monthly Report for September 2024

Healthy Buildings International (HBI) submits this report to the Secretary in accordance with:

- Condition A32 (k) of the Sydney Metro Western Sydney Airport, SSI 10051 Approval (23 July 2021)

The attached summary details the key activities undertaken by Environmental Representatives for Sydney Metro Western Sydney Airport for September 2024.

Yours sincerely

[REDACTED]
Environmental Representative

Cc:

Sydney Metro: [REDACTED]

DPHI: Major Projects Portal

Enclosed: ER Endorsement of FSM CEMP R03 180924



Table of Contents

1. Advanced and Enabling Works (AEW)	3
2. Station Boxes and Tunnelling (SBT)	7
3. Surface and Civil Alignment Works (SCAW)	12
4. Stations, Systems, Trains, Operations and Maintenance Package (SSTOM)	17
5. Statement of Limitations	22



1. Advanced and Enabling Works (AEW)

Contract Package	Environmental Representative/s
Advanced and Enabling Works (AEW)	[REDACTED]
Key Construction Activities During the Period	
<ul style="list-style-type: none"> ▪ St Marys Footbridge (FSM): <ul style="list-style-type: none"> ○ Piling works continued on platforms 1/2 and 3/4 ○ Excavations continued on platforms 1/2 and 3/4 ○ Spoil loadout to laydown area 1 and Hobart Street occurred ○ Cranes were utilised in the main compound to transfer materials and equipment platforms 3/4 ○ Further excavation and pile breakback occurred on both platforms ○ Installation of shoring boxing occurred on both platforms 	
Key Construction Activities Look Ahead	
<p>The Construction activities planned for the upcoming period for the Advanced Enabling Works (AEW) comprise of:</p> <ul style="list-style-type: none"> ▪ St Marys Footbridge: <ul style="list-style-type: none"> ○ Continuation of excavation on both platforms ○ Material loadout following waste classification ○ Preparation for possession on weekends 14 and 16 OOHW 	
ER Inspections	
<p>There were two (2) inspections of the St Marys Station Footbridge contract undertaken by the ER (AG) in September 2024.</p> <p>Key points/ issues raised during the inspections were as follows:</p> <ul style="list-style-type: none"> ○ The contractor advised the ER and SM on 23/09/24 that heavy vehicles used Forester Road in a fashion that may not have been consistent with the EIS and prior to the HVLR approval on 19/09/24. See non-compliance section for further detail. ○ A rain event triggering a pre and post rain fall inspection was predicted to commence on 26/09/24. The ER requested inspection records and photos. Documents submitted indicated inspection obligations were compliant with the CEMP ○ Works on the platforms were reduced due to the cancellation of WE12 possession. Excavated spoil was covered to minimise ERSED risk ○ Minor housekeeping issues in the compound were noted. Following this request by the ER, the compound was tidied, and waste concrete removed ○ The concrete pour observed on 09/09/24 was controlled with all washout occurring in the compound. The plastic catch tray underneath the pump however, required additional volume ○ The excavations on platforms 1/2 and 3/4 were well contained and didn't pose a significant ERSED risk 	



Photos

St Marys Footbridge



Compound - The water tanks to allow water recycling are setup, however do not have any water stored in them as of the last ER inspection on 23/09/24.



Compound – The concrete pump had a plastic catch tray underneath it, however the ER questioned its volume and recommended a tray with more capacity.



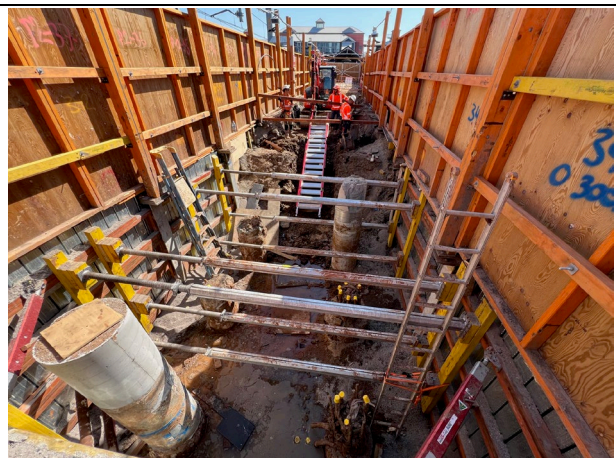
Compound - Waste concrete stockpiled in this location in the compound was sent off site for recycling.



Platform 3/4 - Concrete was poured into piles, all concrete washout occurred in the compound and not on the platform.



Platform 3/4 – Works were suspended prior to WE12 with all stockpiled material covered in plastic to reduce the ERSED risk.



Platform 1/2 - Piles were being broken back on platform 1/2.



Stockpile area 1 - The entrance / exit area has been left in an unacceptable state by others. It is noted that LOR cleaned this up during the ER inspection.

Stockpile area 1 - The ERSED controls at area 1 have been left in situ ready for future spoil stockpiling.

Endorsed Document/s

The following documents were endorsed/approved by the ER:

- Sydney Metro Western Sydney Airport – Advanced and Enabling Works, Footbridge St Marys Construction Environmental Management Plan Revision 03 dated 18/09/2024. Endorsed 18/09/2024. (Refer Appendix A)

The following documents were provided for information or reviewed with comments provided to Sydney Metro:

- Weekend 14 (WE14), 05 October – 06 October 2024 OOHW Application, rev 0 (06/09/2024) & rev 01 (27/09/2024)
- Weekend 16 (WE16), 19 October – 20 October 2024 OOHW Application, rev 0 (29/09/2024)

Complaints / Incidents / Non-compliance

One non-compliance was reported to or identified by the ER for the period.

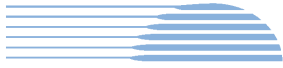
- Potential non-compliance with E105. Contractor utilised Forester Road on 18 & 19/09/2024 in a manner that does not appear to be consistent with the EIS, and prior to receipt of the correspondence from DPHI on 19/09/24 approving the use of Forester Road. ER requested DPHI be notified as per A44. Contractual correspondence has been sent by both Sydney Metro and the contractor. The ER is included in all meetings and correspondence. Sydney Metro and the ER will continue to provide DPHI updates on this matter.

No incidents were reported to the ER during the period:

No complaints were received during the period.

Audits (specific to packages reported in this report)

- Independent Environmental Audit 6 – Draft Report (13/09/24) submitted to ER on 18/09/24



Looking Forward – Core Focus Areas

Throughout September 2024 works occurred during normal construction hours only as planned works on WE12 were cancelled due to industrial action. The potential non-compliance with E105 will be further investigated by Sydney Metro with the ER in attendance and providing recommendations.

ER Closing Comments:

The contractor has generally managed inspection and monitoring obligations well with evidence submitted to the ER. As weekend possessions are still to be utilised for the remainder of the project, there will continue to be a focus on OOHW compliance. The key issues regarding the works include:

- Compliance with the HVLR
- Mud tracking
- Noise
- Heritage impacts
- Interaction with members of the community
- Dust

Except for heavy vehicle use of Forester Road these issues have been generally managed well with most issues addressed by the contractor before the ER attends site.



2. Station Boxes and Tunnelling (SBT)

Contract Package	Environmental Representative/s
Station Boxes and Tunnelling (SBT)	[REDACTED]
Key Construction Activities During the Period	
<ul style="list-style-type: none"> ▪ St Marys: <ul style="list-style-type: none"> ○ SBT package has demobilised from the site and handed over to SSTOM ▪ Orchard Hills: <ul style="list-style-type: none"> ○ Site topsoil/spoil storage in preparation for haulage offsite. ○ Cross passage material storage and haulage offsite. ○ Operation and maintenance of ERSED controls. ○ Tunnel support infrastructure removal ○ Tunnel portal and base slab FRP ○ Water treatment plant operation and disposal to trade waste at Claremont Meadows. ○ Demobilisation of plant and equipment from laydown areas ○ Office compound is being demobilised ▪ Claremont Meadows Services Facility: <ul style="list-style-type: none"> ○ Water treatment plant operating. ○ Waterproofing in shaft ○ Storage of surplus construction materials from other northern sites ○ Cross passage ramp soil storage and delivery ○ Concrete deliveries to tunnel for invert work and shotcreting ▪ Bringelly Services Facility: <ul style="list-style-type: none"> ○ Storage of surplus construction materials from other southern sites. ○ Cross passage ramp soil delivery and removal. ○ Concrete deliveries to tunnel ▪ Aerotropolis: <ul style="list-style-type: none"> ○ SBT package has demobilised from the site and handed over to SSTOM 	
Key Construction Activities Look Ahead	
<ul style="list-style-type: none"> ▪ Claremont Meadows Services Facility: <ul style="list-style-type: none"> ○ Continue erosion and sediment controls operation and maintenance. ○ Continue Water Treatment Plant operation and maintenance. ○ Storage of surplus construction materials from other northern sites. ○ Ramp spoil storage and haulage offsite. ○ Concrete deliveries for invert construction, including outside Construction Hours. ○ Expected to handover to SSTOM in November 2024 ▪ Orchard Hills: <ul style="list-style-type: none"> ○ Disposal of surplus topsoil/spoil stockpile offsite. ○ Operation and maintenance of ERSED controls. ○ Tunnel support infrastructure removal ○ Tunnel portal water proofing and base slab FRP ○ Water treatment plant operation and disposal to trade waste at Claremont Meadows. ○ Demobilisation of plant and equipment from laydown areas 	



- Site demobilisation
- Earthworks and drainage for handover to SSTOM in early November 2024
- Bringelly Services Facility:
 - Continue Erosion sediment controls operation and maintenance.
 - Tunnelling support activities, including concrete deliveries outside Construction Hours.
 - Handover to SSTOM in December 2024

ER Inspections

There were two (2) routine ER Inspections conducted on 12/09/24 and 26/09/24 by the ER (AG).

Key points/ issues raised during the inspections were as follows:

- Except for the Bringelly site, previous ER inspection actions were closed
- Generally, exit points were in good condition with a few controls requiring a refresh
- The post rain inspections were compliant with CEMP requirements and allowed the project to assess the functioning of the controls and make any adjustments as necessary
- Given the number of concrete pours occurring across the project, washout processes and facilities were well managed with early cleanout and monitoring of capacity.
- As sites start to demobilise, housekeeping remains an important aspect to manage

ER inspections are on a fortnightly cycle.

Photos



Claremont Meadows – Water cannons were in operation to control the dust during concrete breakup.



Claremont Meadows – Black plastic was placed around the concrete pump to capture any concrete splatter during pours.



Claremont Meadows – All water in the NW corner is pumped from the sump to the WTP. Additional pumps are available in case of a breakdown.



Claremont Meadows – The removal of the concrete washout adjacent to this drain has reduced the runoff risk.



Claremont Meadows – Mud was noted on the internal sealed road, however the streetsweeper was present to continually remove this.



Claremont Meadows – The rumble grid at the site exit was working effectively.



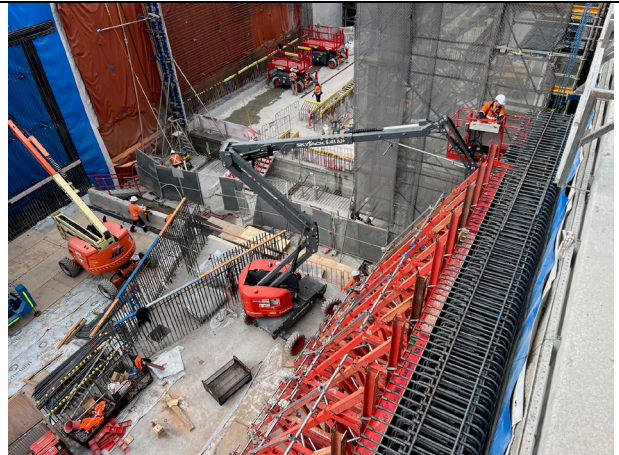
Orchard Hills – The office compound is being demobilised.



Orchard Hills – The sediment basin has significant freeboard despite 12.8mm of rain received prior to the inspection.



Orchard Hills – Scrap hardwood timber is stockpiled and provided to a timber recycler.



Orchard Hills – Formwork is supported by steel structures which allows concrete to be poured vertically.



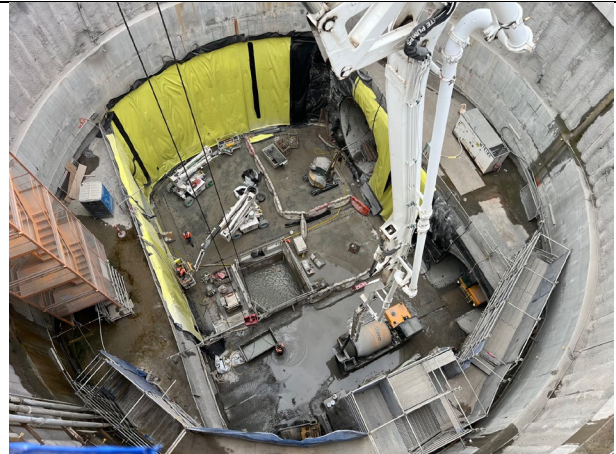
Orchard Hills – Works progress in the dive structure with low environmental risk.



Bringelly – The noise wall has been installed prior to OOHW concrete pours.



Bringelly – The concrete washout pit was effectively used during the inspection.



Bringelly – Concrete pours were ongoing from the surface to the tunnel.



<p>Bringelly – Additional geofabric and coir logs have been installed adjacent to the laydown area haul road.</p>	<p>Bringelly – Asbestos was found in this stockpile. Samples have been sent for testing to determine the nature of the asbestos.</p>
--	---

Endorsed Document/s

The following documents were endorsed/approved by the ER:

- None during the period

The following documents were provided for information or review as applicable:

- August Monthly Monitoring Reports comprising Dust (real-time), Noise and Surface Water.
- SM WSA - SBT - Biannual Groundwater Monitoring Report December 2023 to June 2024

Complaints / Incidents / Non-compliance

There were no Non-Compliances with the Approval raised by or reported to the ER this period

There were no incidents of note identified by or reported to the ER this period.

Three (3) complaints were reported to the ER, a marked decrease from the previous month:

- Two (2), from Orchard Hills, related to noise out of hours.
- One (1) from Bringelly, related to sweeper bristles and traffic and parking.

The complaints above are under investigation or review by Sydney Metro and CPBG, as detailed in the register.

Audits (specific to packages reported in this report)

- Independent Environmental Audit 6 – Draft Report (13/09/24) submitted to ER on 18/09/24

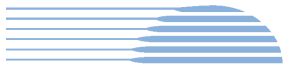
Looking Forward – Core Focus Areas

Risks now relate to tunnel support activities at Bringelly, and Claremont Meadows. Of note are:

- OOH noise management at Bringelly for concrete pumping activities into the shaft
- OOH noise management at Claremont for concrete pumping activities into the shaft

ER Closing Comments:

The contractor continues to apply good environmental management practices. This has been witnessed during the rain event at the end of September with good implementation and timely rectification of controls.



3. Surface and Civil Alignment Works (SCAW)

Contract Package	Environmental Representative/s
Surface and Civil Alignment Works (SCAW)	[REDACTED]
Key Construction Activities During the Period	
<ul style="list-style-type: none"> ▪ Patons Lane <ul style="list-style-type: none"> ○ Sandstone import over northern tributary stream culvert is complete, finishing works continue ○ Weed spraying continuing ○ Hydromulching activities are ongoing ▪ SMF <ul style="list-style-type: none"> ○ Additional geotechnically unsuitable material is being added to PS105 ○ Borg dam finishing works ○ Drainage line works ▪ Defence Land <ul style="list-style-type: none"> ○ Drainage works ongoing ○ Abutment construction towards the Warragamba pipeline ○ Viaduct segments have been installed over the Warragamba pipeline ▪ Luddenham Station <ul style="list-style-type: none"> ○ Construction of Luddenham Rd roundabout is complete ○ Structural station works continue. ○ Viaduct segment installation south of the Warragamba pipeline ▪ Luddenham Road South <ul style="list-style-type: none"> ○ Area has been handed over to SSTOM ▪ M12 to Cosgrove’s Creek <ul style="list-style-type: none"> ○ Area has been handed over to SSTOM ▪ Elizabeth Drive <ul style="list-style-type: none"> ○ Topsoiling and hydromulching continues ○ Works are occurring underneath the M12 bridge 	
Key Construction Activities Look Ahead	
<ul style="list-style-type: none"> ▪ Patons Lane: <ul style="list-style-type: none"> ○ Finalising rehabilitation works ○ Installation of road furniture e.g. barriers ○ Weed control continues ▪ Stabling and Maintenance Facility (SMF) Orchard Hills: <ul style="list-style-type: none"> ○ Rehabilitation works ongoing ○ Geotechnically unsuitable material will continue to be added to PS105 ▪ Defence Land: <ul style="list-style-type: none"> ○ Finishing works ongoing ○ Drainage at Unnamed Creek ongoing ○ Abutments to be completed ▪ Luddenham Station: <ul style="list-style-type: none"> ○ Rehabilitation of disturbed areas ○ Viaduct segment placement to continue south of the Warragamba pipelines ▪ Luddenham Road South: 	



- Area has been handed over to SSTOM
- M12 to Cosgroves Creek:
 - Area has been handed over to SSTOM
- Elizabeth Drive:
 - Filling and earthworks continuing
 - Topsoiling and hydromulching
 - Permanent alignment drainage works ongoing

ER Inspections

There were two (2) ER Inspections conducted on 05/09/24 and 19/09/24 by the ER (AG).

Key points/issues raised during these inspections were as follows:

- Portion 3 has been handed over to SSTOM and is no longer maintained by SCAW
- Drainage structures are being converted to final design and while temporary controls have been removed to allow construction works, frequent inspection is required
- PS105 was being added to, however testing of the final layers of material commenced
- Further revegetation is programmed to occur over the coming weeks
- Weed control and eradication is to proceed as per the requirements of the weed maps. This activity is required to be progressed ASAP
- Housekeeping remained a focus for areas where works were minimal

ER inspections are on a fortnightly cycle weather and health permitting.

Photos



M12 Bridge - A significant portion of the catchment has been hydromulched.



M12 Bridge - Batters have been topsoiled and are due to be hydromulched in late September / early October.



M12 Bridge – Drainage works are progressing underneath the bridge.



M12 Bridge – The rock lined channel adjacent to the M12 access track is being constructed.



Luddenham North - Segments are stored in dedicated segment storage areas adjacent to the main alignment.



Luddenham North - Works continue on the viaduct.



Luddenham North - A good drainage control has been installed on the access road cross drain.



Luddenham North – Excessive smoke was seen from this diesel generator. ER was informed that this is part of the servicing process due to the particulate burn-off.



Defence - Hydromulch has been applied to the batters at the northern end of the Defence site.



Defence - The headwall was about to be installed and the finalisation of the channel at Unnamed Creek.



Defence - The western side of the fence has been finalised at Unnamed Creek.



PS105 - Loading of geotechnically unsuitable material continues.



Blaxland's Creek - The bridge over Blaxland's Creek is nearing completion.



14ML Basin - The basin is still being used by SCAW as a water source for construction activities.



Unnamed Tributary - The vegetation at Unnamed Tributary has progressed well and has recently been slashed and treated for weeds.

Lansdowne Road - The haul road perpendicular to Lansdowne Road has been sealed and is complete.

Endorsed Document/s

The following documents were endorsed/approved by the ER:

- None for the period

The following documents were provided for information or reviewed:

- None for the period

Complaints / Incidents / Non-compliance

There were no Non-Compliances with the Approval raised by or reported to the ER this period

There were no incidents of note identified by or reported to the ER this period.

There were no complaints reported to the ER this period:

Audits (specific to packages reported in this report)

- Independent Environmental Audit 6 – Draft Report (13/09/24) submitted to ER on 18/09/24

Looking Forward – Core Focus Areas

Focus on compliance for the remaining work areas will continue through inspections and document requests. So far, the environment resourcing on the project remains at its full compliment. The ER continues to liaise with both Sydney Metro and CPBUI project directors, discussing any concerns that may be observed.

ER Closing Comments: As further areas develop acceptable ground cover the environmental risk will continue to reduce – this have been a priority of the construction team so far. The project continues to exercise compliance towards inspections and monitoring. Key environmental issues that are progressing include:

- Dust
- Mud tracking
- Erosion and Sediment control
- Water management
- Compliance with the RAP at PS105



4. Stations, Systems, Trains, Operations and Maintenance Package (SSTOM)

Contract Package	Environmental Representative/s
Stations, Systems, Trains, Operations and Maintenance Package (SSTOM). Contractor Parklife Metro (PLM)	
Key Construction Activities During the Period	
<ul style="list-style-type: none"> ▪ St Mary’s Station (STM): <ul style="list-style-type: none"> ○ Waterproofing is ongoing. ○ Concrete base and wall pours are ongoing. ▪ Orchard Hills Station (ORH): <ul style="list-style-type: none"> ○ Station box base slab ongoing ○ Waterproofing ongoing ○ Sump construction in the box ongoing ○ Concrete batch plant operational ▪ Stabling and Maintenance Facility (SMF): <ul style="list-style-type: none"> ○ Deliveries ongoing from Western Tunnelling Package (Metro West) are expected to finish end of October ○ Substation earthworks and FRP ongoing ○ Permanent stormwater drainage ongoing ○ Connection of 132kv power ongoing ○ Weed spraying ongoing, small sections remaining. ▪ Luddenham Station (LUD): <ul style="list-style-type: none"> ○ Detailed excavation of station and installation of ground services to continue ○ Extension of light vehicle car park ongoing, chip seal postponed to October ○ Testing of stockpiles for reuse at Bradfield completed ○ Concrete works commenced ▪ Bradfield Station (Aerotropolis Core AEC): <ul style="list-style-type: none"> ○ Base slab pours complete, wall pours ongoing ○ Sump construction complete ○ Waterproofing ongoing ○ Backfilling of eastern clean water diversion completed ○ Car park stabilisation works ▪ Project Wide <ul style="list-style-type: none"> ○ Portion 3 has been handed over from SCAW to SSTOM (12 Sept) ○ Laydown earthworks had commenced in Portion 3. 	
Key Construction Activities Look Ahead	
<ul style="list-style-type: none"> ▪ St Mary’s Station (STM): <ul style="list-style-type: none"> ○ Slab pours ongoing, likely to utilise out of hours for larger pours 	



- Tower crane 2 erection to occur (delayed to October)
- Precast beam installation works to commence late October
- Waterproofing ongoing
- Orchard Hills Station (OHS):
 - Waterproofing and base slab pours continue
- Stabling and Maintenance Facility (SMF):
 - Ongoing importation of material to continue (expected to be completed end of October).
 - Connection of 132kv power to continue.
 - Construction of the transformer to continue
 - Additional area for stockpiling. (SCAW handover to SSTOM)
 - Permanent stormwater drainage to continue
- Luddenham Station (LUD)
 - Car park extended and resurfaced
 - Detailed excavation of the station area minor works
- Bradfield Station (BFD) (previously Aerotropolis Core - AEC):
 - FRP works and wall pours
 - Waterproofing
 - Complete realignment of drains
 - AEC discharge pipeline (currently descoped)
 - Water treatment plant (WTP) may be demobilised and replaced by a smaller WTP.
 - Earthworks to commence
- Project wide
 - Weed control
 - Preparation work for Line Wide work

ER Inspections

There was two ER inspections conducted this period, on 20/08/24 by the ER (BMC).

Key points/issues raised during these inspections were as follows:

- STM – It was noted that contractor vehicles were parked outside of the Phillip Street site entrance. PLM reminded contractors and the CTMP is under review to include a parking monitoring strategy.
- STM – noise mitigation for the tower crane was ongoing. It was noted that an arrangement was in place with TC1 to have a shroud installed (Scheduled 14 October) and TC 2 will be installed before setup.
- STM – minor graffiti was pending removal from the hoarding. Discussions with Sydney Metro regarding branding requirements was ongoing.
- ORH – ERSED was being managed well across the site. Wheel wash has been installed and sediment tracking will be monitored.
- ORH –concrete batch plant operational and inspection of the work area to be included in the next inspection (pending site induction). The ER and PLM discussed monitoring noise from concrete trucks reversing on site and potential mitigation measures.
- SMF – The second round of targeted weed spraying was completed. PLM is discussing suitable herbicide use with the contractor for the remaining topsoil stockpile and swales.

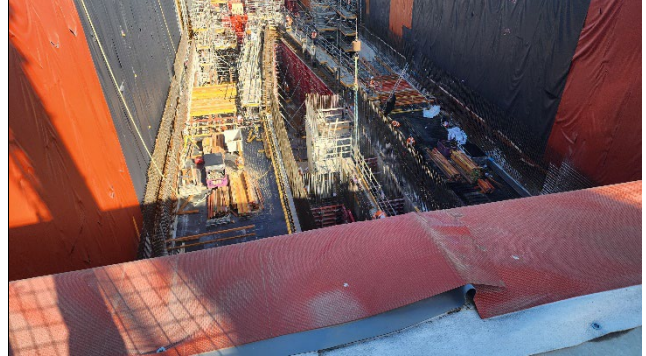


- LUD and BFD –Very minor ERSED tracking noted.
- LUD – noted site generator swapped for hybrid generator (good practice)
- Portion 3 – site handed over by SCAW and site setup had commenced. ER and PLM discussed installing ERSED measures and monitoring tracking from the site.

Photos



STM – Site exit wheel wash and laydown.



STM – View of FRP and waterproofing in the box.



ORH -Wheel wash installed.



ORH – box and batch plant.



ORH – Turkey nest had sufficient headspace.



ORH – Batch plant generators and FRP prep area.



SMF – Weeds in swales and topsoil stockpile. Spraying was pending agreement of suitable herbicide.



SMF – View of SMF facing north.



LUD – reshaping of the boundary swale had occurred, FRP and concrete pours had commenced. Lift shaft waterproofing works commenced.



LUD - Hybrid generator installation (good practice).



Portion 3 – handover has been completed.



Portion 3 – retention basin noted that PLM will vegetate the basin.



BFD – Concrete pumping on the northern side of the box had commenced.



BFD – clean water swale backfilling and smaller swale constructed.



Endorsed Document/s
<p>The following documents were endorsed/approved by the ER:</p> <ul style="list-style-type: none">▪ Nil this period <p>The following documents were provided for information or reviewed with comments provided to Sydney Metro:</p> <ul style="list-style-type: none">▪ SMWSA SSTOM Submissions Board, Submissions Forecast & ICD Submissions Board - September 2024▪ ORH- Detailed Noise and Vibration Impact Statement - Concrete Works OOH and Batch Plant Report - Rev 02▪ Noise and Vibration Construction Monitoring Report - February to July 2024▪ Bradfield Station (AEC) – Concrete Works OOH - Detailed Noise and Vibration Impact Statement - Rev 01▪ Air Quality Construction Monitoring Report Feb to Jul 2024▪ Non-Aboriginal Heritage Management Sub-Plan - Rev 01.02
Complaints / Incidents / Non-compliance
<p>There was one Non-Compliance with the Approval reported to the ER during this period:</p> <ul style="list-style-type: none">▪ Non-compliance with Condition C1 for the inclusion of trade waste licences to be included in the CEMP raised from the independent audit. <p>There were no incidents of note identified by or reported to the ER this period.</p> <p>The following complaints were reported to the ER during the period:</p> <ul style="list-style-type: none">▪ ORH – A complaint was received regarding worker behaviour while driving, while the individual was not identified, all project staff were toolboxed and the installation of additional signage was investigated for installation.
Audits (specific to packages reported in this report)
<ul style="list-style-type: none">▪ No audits were undertaken during this period. IEA#2 was completed in August. RFIs are being worked through by Sydney Metro and PLM.
Looking Forward – Core Focus Areas
<p>The focus continues to be the review and implementation of the CEMP and sub-plans, with a particular focus on ongoing preparation for storm season erosion and sediment controls, and contractor parking at STM. No Line Wide portion handovers are expected during October.</p> <p>ER Closing Comments: A change in Environmental Manager for PLM appears to be progressing smoothly, with site staff continuing to keep day-to-day running of activities under check. It is noted that the environmental staff continue to be proactive in looking at alternate options to minimise site impacts, as demonstrated with hybrid generators being trialled at Luddenham station.</p>

5. Statement of Limitations

Healthy Buildings International (HBI) has prepared this report in accordance with the requirements of Condition A32 (k) of the Sydney Metro Western Sydney Airport, Concept and Stage 1 SSI 10051 Approval (23 July 2021). The report is for the sole purposes of the Department of Planning, Housing and Infrastructure (DPHI) and Sydney Metro. It has been prepared based on generally accepted practices and standards at the time it was prepared. No other warranty, expressed or implied, is made as to the professional advice included in this Report. This report did not assess any aspects relating to safety.

Where the Report indicates that information has been provided to HBI by third parties, HBI assumes no liability for any inaccuracies in or omissions to that information.

This Report was prepared based on the conditions encountered and information reviewed at this time. HBI disclaims responsibility for any changes that may have occurred after this time.

This Report should be read in full. No responsibility is accepted for use of any part of this report in any other context or for any other purpose or by third parties. This Report does not purport to give legal advice. Legal advice can only be given by qualified legal practitioners.

Except as required by law, no third party may use or rely on this Report unless otherwise agreed by HBI in writing. Except as specifically stated in this section, HBI does not authorise the use or findings of this Report by any third party

To the extent permitted by law, HBI expressly disclaims and excludes liability for any loss, damage, cost or expenses suffered by any third party relating to or resulting from the use of, or reliance on, any information contained in this Report. HBI does not admit that any action, liability or claim may exist or be available to any third party.



HBI

Healthy Buildings International Pty Ltd

A.C.N. 003 270 693

A.B.N. 39 003 270 693

Suite 2.06, Level 2
29-31 Solent Circuit
Norwest NSW 2153

Tel: 61 (02) 9659 5433
e-mail: hbi@hbi.com.au
Web:

www.hbi.com.au

18 September 2024

██████████
Director Sustainability Environment & Planning SMWSA
Sydney Metro
Transport for NSW
PO Box K659
HAYMARKET NSW 1240

Ref: 201209_Footbridge St Marys CEMP_Rev03

Dear ██████████

RE: Endorsement of the Sydney Metro Western Sydney Airport, Advanced and Enabling Works, Footbridge St Marys Construction Environmental Management Plan, Rev 03

Thank you for providing the following document for Environmental Representative (ER) review and approval in accordance with MCoA A32(j) of the Sydney Metro Western Sydney Airport project (SSI – 10051 July 23, 2021):

- *Sydney Metro Western Sydney Airport – Advanced and Enabling Works, Footbridge St Marys Construction Environmental Management Plan Revision 03 dated 18/09/2024 (CEMP Rev 03).*

As an approved ER for the Sydney Metro Western Sydney Airport project, I have reviewed the following proposed minor amendments in the CEMP Rev 03:

- Section 10.1 – additional information provided regarding the risk control process
- Attachment P – updated the Water Reuse Strategy with further information on site water reuse options and testing requirements
- General - General corrections including typographical errors and expression

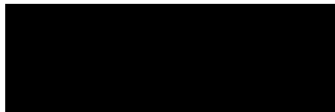
It is noted that:

- Previous versions of the document have been reviewed and updated following comments from the ER
- Sydney Metro and Transport for New South Wales have also reviewed and commented on the document

Based on the information reviewed, in my opinion, the proposed changes constitute a minor amendment pursuant MCoA A32 (j). Accordingly, as an approved ER for the Sydney Metro Western Sydney Airport project, I approve the amended CEMP Rev 03.

The Project is reminded to ensure the most recently approved CEMP is made publicly available on the Project's website.

Yours sincerely



Environmental Representative – Sydney Metro Western Sydney Airport