

Mr Rob Sherry
Team Leader Compliance – Government Projects
Department of Planning, Housing and Infrastructure
Locked Bag 5022
PARRAMATTA NSW 2124

4 October 2024

Ref:201208-ER_DPHI-September 2024

Dear Rob

RE: Sydney Metro - Sydney Metro West SSI - ER Monthly Report for September 2024

Healthy Buildings International (HBI) submits this report to the Secretary in accordance with:

- Condition A30 (k) of the Sydney Metro West, Concept and Stage 1 SSI 10038 Approval (11 March 2021), and associated modifications (MOD 1 - 28 July 2021, MOD 2 - 3 June 2022, MOD3 – 4 July 2022, MOD 4 - 23 December 2022 and MOD 5 – 20 September 2023); and
- Condition A32(k) of the Sydney Metro West – The Bays to Sydney CBD SSI 19238057 Approval (24 August 2022) and associated modifications (MOD 1 – April 2023, MOD 2 – October 2023).

The attached summary details the key activities undertaken by Environmental Representatives for Sydney Metro – Sydney Metro West for the month of September 2024.

Yours sincerely

Jo Robertson
Environmental Representative

Cc:

DPHI: Major Projects Portal

Sydney Metro: Matthew Marrinan, John Ieroklis, Andrew Hendy, Cath Snelgrove, Ari Stypel, Ben Armstrong, Sarah Kemp, Syed Shah, Valerie Lebon

Contractors: Jared Lipton (AFJV), Steph Mifsud (GLC), Sally Reynolds (JCG), Tom St Vincent Welch (Quickway)



Table of Contents

1	Phase B - Central Tunnelling Package	4
1.1	Key Construction Activities During the Period	4
1.2	Key Construction Activities Look Ahead	5
1.3	ER Inspections	5
1.3.1	Photos	6
1.4	Endorsed Document/s	7
1.5	Complaints	7
1.6	Compliance	8
1.6.1	Incidents	8
1.6.2	Non-compliance and Potential Non Compliance	8
1.6.3	Audits	8
1.7	Looking Forward – Core Focus Areas	8
2	Phase F – Western Tunnelling Package	9
2.1	Key Construction Activities During the Period	9
2.2	Key Construction Activities Look Ahead	10
2.3	ER Inspections	10
2.3.1	Photos	11
2.4	Endorsed Documents	14
2.5	Complaints	14
2.6	Compliance	14
2.6.1	Incidents	14
2.6.2	Non-compliance	14
2.6.3	Audits	15
2.7	Looking Forward – Core Focus Area	15
3	Phase G – Eastern Tunnel Package	16
3.1	Key Construction Related Activities During the Period	16
3.2	Key Construction Activities Look Ahead	17
3.3	ER Inspections	17
3.3.1	Photos	18
3.4	Endorsed document/s	19
3.5	Complaints	19
3.6	Compliance	20
3.6.1	Incidents	20
3.6.2	Non-compliance	20
3.6.3	Audits	20



3.7	Looking Forward – Core Focus Areas	20
4	PHASE H - Westmead Utility Relocation	21
4.1	Key Construction Related Activities During the Period	21
4.1	Key Construction Activities Look Ahead.....	21
4.2	ER Inspections	21
4.2.1	Photos	21
4.3	Endorsed Document/s.....	21
4.4	Complaints	21
4.1	Compliance.....	21
4.1.1	Incidents.....	21
4.1.2	Non-compliance	21
4.1.3	Audits	22
4.2	Looking Forward – Core Focus Areas	22
5	Sydney Metro Retained Obligations and Other Activity	23
5.1	Key Construction Activities During the Period	23
5.2	Key Construction Activities Look Ahead.....	23
5.3	ER Inspections	23
5.3.1	Photos	23
5.4	Endorsed Document/s.....	23
5.5	Complaints	23
5.6	Compliance.....	23
5.6.1	Incidents.....	23
5.6.2	Non-compliance	23
5.6.3	Audits	23
6	Statement of Limitations.....	24
7	Appendix A – ER Document Endorsement Records (ETP only).....	25



1 PHASE B - CENTRAL TUNNELLING PACKAGE

The Environmental Representatives for Phase B of Sydney Metro West are:

- Michael Woolley
- Maulik Bapodara
- Swathi Gowda
- Jo Robertson

Phase B – Central Tunnelling Package (CTP) is being delivered by Acciona Ferroviol Joint Venture (AFJV). Phase B of Sydney Metro West has been further broken into:

- Phase B1: Civil works
- Phase B2: Tunnelling works

The AFJV hold EPL 21610 for this Phase of works. Activities defined as Phase B2-Tunneling Works in the Staging Report for Metro West commenced during the November 2022 reporting period at Burwood North.

1.1 Key Construction Activities During the Period

The Bays

- Ongoing support activities for the two TBMs tunnelling from North Strathfield station box to SOP. These activities included delivery and storage of segments, spoil storage and load out and operation of ventilation systems.
- Installation of a tower crane for demobilisation. This involved construction of 40 piles.
- Ongoing construction of cross passages between the two tunnels.
- Ongoing use of site office facilities; and works shops.
- Operation of the water treatment plant and discharge of treated water.
- Use of the staff car park in the Ports area.
- Preparation for TBM arrival at SOP; demobilisation of TBM services; FRP for the cross over cavern plenum and demobilisation of the site.

Five Dock

- West shaft: Ongoing support for TBM tunnelling for both TBMs. Deliveries of form work modules and assembly of the modules in the base of the shaft using a crane on the surface.
- East Shaft: Deliveries and various works inside the acoustic shed. Tunnelling support activities. Ongoing concrete works for the invert of the central cavern including large consecutive concrete pours.
- Ongoing use of a house on Waterview Street adjacent the eastern shaft for project offices.
- Water directed to the Bays water treatment plant for treatment.

Burwood North

- OOHWS relating to utilities in various areas around the site.
- Operation of supporting plant for the TBM including the grout plant with frequent cement deliveries, power supply, and segment delivery and storage. Harmonic sub operating. The Tasman tank continues to store potable water for the grout plant. Tunnelling personnel are largely based at BN. Various tunnelling activities in the base of the station box.
- All water for treatment was being directed to the Bays. Some treatment of water in the BN water treatment plant, with treated water going to the Bays for further treatment.



- Concrete works in the cross over cavern for the Plenum.
- Ongoing use of the drop chutes for concrete delivery including OOHs.
- Storage of cross passage spoil and general concrete wastes in the station box and load out of spoil using a crane to load trucks.
- South Shaft: Works complete. Area being used for light vehicle parking.

North Strathfield

- TBM support within the Station Box for both TBMs.
- Pumping of water from the station box to the Bays for treatment and discharge.
- Removal of concrete plinths use for the TBM traverse.

Sydney Olympic Park

- Surface water is now directed to stormwater instead of the water treatment plant. Water in the station box is managed by the WTP Contractor.
- Installation of the tower crane.
- Storage on site of a large crane used by WTP package for TBM removal.
- Construction of plinths within the station box.
- Various deliveries to the station box and laydown of materials at the surface.
- Project Office Operating.

1.2 Key Construction Activities Look Ahead

- Ongoing activities as described above.
- TBM expected to arrive at SOP in October.
- Operation of tower cranes at SOP and the Bays.
- Various OOHs (conducted under the EPL).
- Commencement of demobilisation at all sites.

1.3 ER Inspections

There were four ER inspections conducted on each Thursday during September. Sites were inspected on an alternating basis. The following actions were raised:

The Bays:

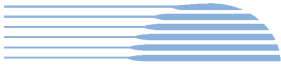
- Remove sediment from the swale drain near the WTP at the Bays as part of ongoing maintenance. Review wash down activities at the segment shed to reduce water being directed to the stormwater pit.
- The need to keep dust tracking minimised at the Bays was discussed.

Five Dock:

- Nil

Burwood North:

- Clean out sediment from the area and re-instate ERSED controls in the low point of the BN south shaft area. AFJV provided photos of this having been done on the day of the inspection.



North Strathfield

- Nil

Sydney Olympic Park

- Nil

AFJV have been responsive in closing out actions raised during inspections. AFJV have been providing regular noise monitoring reports outlining results of attended and unattended monitoring.

1.3.1 Photos



Figure 1.1 Spoil stockpile inside the Spoil Shed (The Bays).

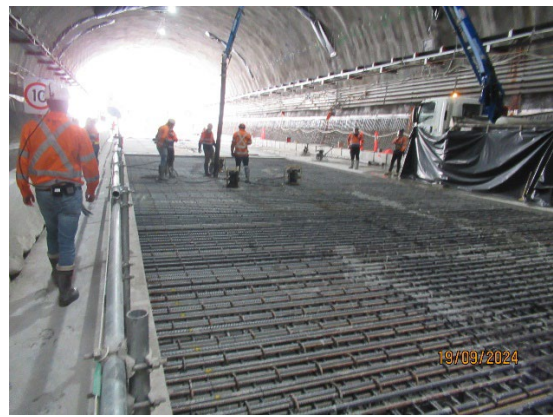


Figure 1.2 Concrete pour for the invert of the Central Cavern (Five Dock).



Figure 1.3 Formwork being assembled in the western shaft (Five Dock).



Figure 1.4 View of station box looking west with pedestrian adit evident (Burwood North).



Figure 1.5 Plenum FRP works in the cross over cavern (Burwood North).



Figure 1.6 Activities in the station box (North Strathfield).



Figure 1.7 Tower crane in place and site being prepared for TBM arrival (SOP).



Figure 1.8 Tower crane installed with noise mitigation measures at SOP for removal of the TBM.

1.4 Endorsed Document/s

The following Plans were approved or endorsed by the ER during the reporting period:

- Spoil Management Plan (Rev 9); and
- Heritage Management Plan (Rev 9).

1.5 Complaints

Based on the Sydney Metro Complaint Register for September 2024, there were 3 complaints reported during the month, which compares with 10 complaints received during the previous month.

One of the complaints related to speeding trucks in Five Dock, which AFJV confirmed was not one of their trucks. One of the complaints related to worker behaviour at Five Dock. The third complaint related to worker parking at Burwood North.

AFJV indicated the lack of tunnelling complaints was related to reduced residents above some sections of the tunnel; restricting nighttime works for excavation of some cross passages in sensitive areas; and proactive door knocking by the community team to ensure people were aware of the tunnelling activities and potential impacts.



1.6 Compliance

1.6.1 Incidents

No Incidents as defined in the Infrastructure Approval were reported by AFJV during the reporting period.

One incident was reported under the Sydney Metro reporting system during the reporting period for a minor coolant spill at the Bays that was contained before entering stormwater systems.

1.6.2 Non-compliance and Potential Non Compliance

One Non-Compliance Report (NCR 039) was provided to the ER during the reporting period which related to workers parking at Burwood North in violation of the CPAS. This was identified through a complaint received by AFJV.

1.6.3 Audits

The fifth Independent Environmental Audit on the Sydney Metro West, Concept and Stage 1 SSI 10038 Approval continued in September 2024.

1.7 Looking Forward – Core Focus Areas

- Impacts of demobilisation activities once TBMs arrive at SOP.
- Review of noise monitoring by AFJV to verify compliance with DNVIS predictions.
- Management of Ground Borne Noise from cross passage excavation.



2 PHASE F – WESTERN TUNNELLING PACKAGE

The Environmental Representatives for Phase F of Sydney Metro West are:

- Swathi Gowda
- Mike Woolley
- Maulik Bapodara

Phase F – Western Tunnelling Package (WTP) is being delivered by Gamuda Australia Laing O’Rourke Consortium (GLC).

GLC are constructing this Phase of Sydney metro West under EPL 21676.

2.1 Key Construction Activities During the Period

During September 2024, construction activities continued at all WTP sites. The following activities were being undertaken at the Sydney Olympic Park (SOP), Westmead, Parramatta and the Clyde stabling and maintenance facility which includes the Rosehill, Clyde Dive and Clyde MSF construction sites:

SOP

- Demobilisation of support plant, equipment, materials and cranes from TBM retrieval completed.
- Cross passage excavation works - spoil from cross passages being brought to the SOP station box for stockpiling (24/7) and load out to surface (dayshift only).
- Cross passage FRP works (24/7).

Westmead

- Minor trimming works to complete invert excavation.
- Blinding slabs being poured in eastern crossover cavern.
- Waterproofing works completed within northern stub tunnel. Formwork preparations for invert slabs and secondary linings.
- Waterproofing works underway within southern stub tunnel.
- Spoil stockpiling and load out within Acoustic shed.
- Water Treatment Plant (WTP) is operational.
- Stub tunnel and nozzle formwork deliveries and assembly in base of station box.
- Demobilisation of various pieces of tunnel support equipment – road headers, scrubber, excavators.

Parramatta

- Station box excavation:
 - Eastern - rock hammering and excavation (dayshift only)
 - Western – alluvium excavation has re-commenced (dayshift only)
 - Western – preparations for 2nd level strut and waler installation
- Nozzle construction:
 - Excavation and shotcreting underway (24/7)
- Archaeological investigations ongoing in Zone 7 (northern portion of the site near George Street)
- WTP is operating and discharging as necessary.



Rosehill

- TBM 1 launched on Monday 23 September toward Parramatta
- Cross passage works are ongoing
- WTP operation including off-site discharge is ongoing with centrifuge commissioned
- No spoil movements off-site from Rosehill (currently).

Clyde Dive

- Lining Erection Machine (LEM) commissioned and operational – OOH scheduled to commence on 10 October 2024
- Cavern waterproofing and lining.
- Electric tower crane operation.
- HV Protection Slab works – on hold for redesign.
- Endeavour Energy continuing works on Unwin St, not related to GLC

Clyde MSF

MSF West

- Demolition of Kay St bridge completed.
- CIC piling – ground improvements, abutment piling and slab pours for conveyance structures ongoing.
- Formwork and retaining wall works ongoing.
- Litter and weed removal works (Duck Creek) - first round completed.
- Area 1 swale drainage improvement and culvert installation works at Duck Creek continuing
- Placement of fill and retaining wall for Unwin St roadworks ongoing
- Piling and slab pours for abutments of conveyance structures ongoing

MSF East

- Retaining walls – concrete pours continuing.
- Southern anchor block and northern anchor block pours completed and backfilling underway.
- BioBasin excavation ongoing.
- Sydney Water – Water Main 1 commissioned and Water Main 2 works to commence.

2.2 Key Construction Activities Look Ahead

The key construction activities planned for October 2024 are similar to those listed in Section 3.1, with the addition of the following:

- Various OOHW (conducted under EPL).
- TBM 2 – expected to relaunch on October 2024.

2.3 ER Inspections

Currently, the sites are divided into two groups and visited typically fortnightly for ER inspections. The two groups are:

- Parramatta, Westmead and SOP
- Clyde Dive, Clyde MSF and Rosehill



Four ER inspections were conducted during the reporting period (04/09/2024, 11/09/2024, 18/09/2024 and 25/09/2024) with opportunities for improvement (OFIs) identified and the following actions raised during the month:

Westmead:

- Westmead: Action raised for GLC to address concrete agitator observed reversing with tonal alarm.

Parramatta:

- Parramatta: Action raised for water observed in chemical storage bund to be pumped out, to restore capacity for any potential spills.
- Parramatta – near site exit on George Street: Action raised for sediment controls to be refreshed.

MSF West

- Action raised regarding increasing water cart frequency within MSF West stockpiling area as a lot of dust was observed.

MSF East

- Action raised regarding weed management as Class 4 noxious weeds (caster oil plants) observed on stockpiles.

2.3.1 Photos

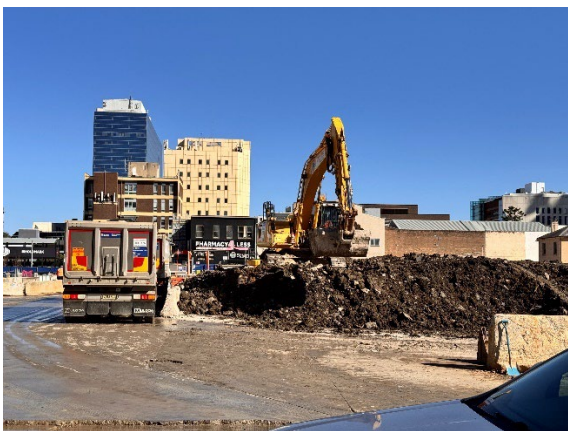


Figure 2.1- Parramatta Site: Spoil loading operation underway and Project identifiable stickers observed on truck.

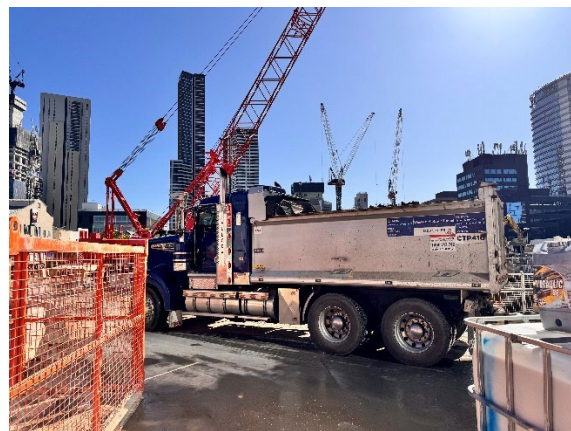


Figure 2.2- Parramatta Site: Project identifiable stickers observed on truck .



Figure 2.3 – Parramatta Site: Western Station Box excavation continuing.

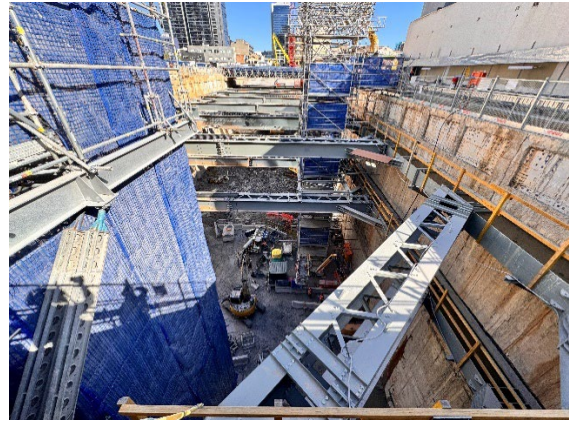


Figure 2.4 – Parramatta Site: Eastern Station Box continuing.



Figure 2.5 -Westmead Site: Station Box activities continuing.



Figure 2.6 – Westmead Site: Vehicles observed on-site, with no trucks/semi-trailers observed parked on nearby streets, during the ER Inspection.

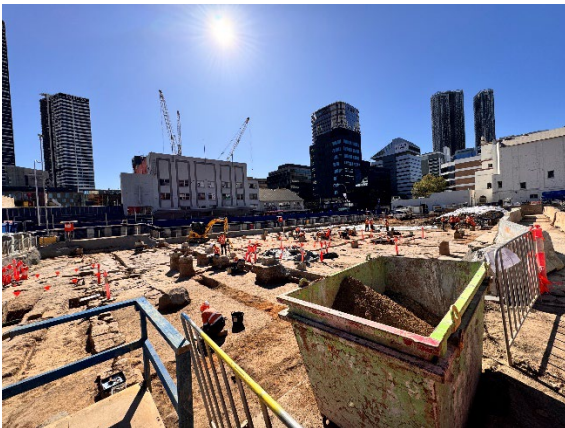


Figure 2.7 - Parramatta Site: Archaeological investigations in Zone 7 by GML continuing.



Figure 2.8 – Sydney Olympic Park: GLC reported TBM 2 last load completed (2/09/24).



Figure 2.9 – Rosehill Site: Street sweeper mobilised and hardstand areas wet down.

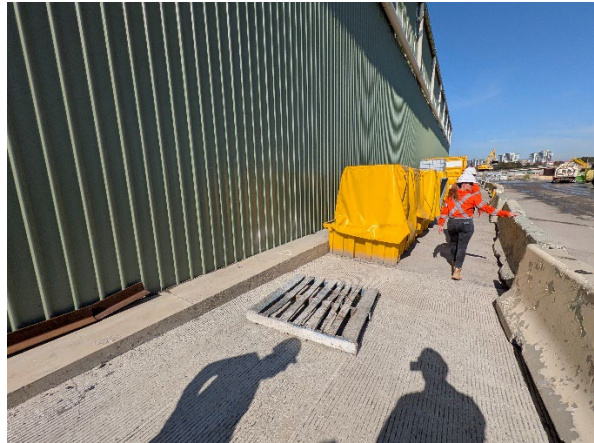


Figure 2.10 – Rosehill Site: Chemical storage.

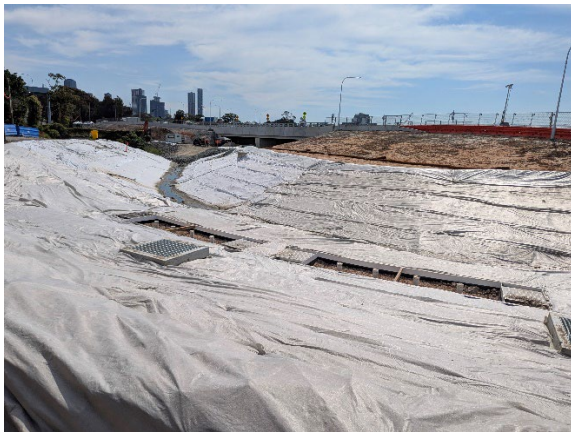


Figure 2.11 – Clyde MSF West – Area 1 Swale Drain improvement works ongoing.



Figure 2.12: Clyde MSF East - Retaining walls and blinding layer concrete pours ongoing.



Figure 2.13 – Clyde Dive – LEM Assembly ongoing. Roadheader break through.



Figure 2.14: Clyde MSF West Site Gate 9, Unwin St: Street sweeping and no tracking observed during ER Inspection 11/09.



Figure 2.15: Rosehill site: TBM 2 assembly ongoing.



Figure 2.16: Rosehill site: Water Treatment Plant is operating with centrifuge installed and commissioned.

2.4 Endorsed Documents

The following documents were approved or endorsed by the ER during the reporting period:

- WTP Groundwater Monitoring Program Rev D

It should be noted that above Groundwater Monitoring Program was endorsed following provision of updated Groundwater Monitoring Program to NSW DCCEE Water Group for comment and receipt of correspondence on 12/09/2024 – noting updates to Program were satisfactory, consistent with recommendations made and no further comments from their review.

2.5 Complaints

Based on the Sydney Metro Complaint Register for September 2024, there were 2 complaints reported during the month, compared to 13 complaints in the previous month. The complaints are summarised below.

Parramatta

- One complaint relating to private vehicle incident (property damage).
- One complaint relating to private vehicle parking within construction site carpark (traffic and transport)

2.6 Compliance

2.6.1 Incidents

No incidents considered to represent Incidents as defined under the Project Approval were reported to or observed by the ER during the reporting period.

Four (Class 3) incidents related to minor hydraulic fluid spills were reported under GLC's reporting system during the reporting period. All spills were contained within hardstand areas.

2.6.2 Non-compliance

Nil non-compliance reports provided to the ER during the reporting period.



2.6.3 Audits

Independent Environmental Audit #5 commenced in August 2024 with opening meeting on 19 August 2024; with WTP inspection and interviews on 4 and 5 September 2024.

2.7 Looking Forward – Core Focus Area

The core focus areas for the coming month are:

- Management of OOH at Clyde Dive
- Management of low flow construction works for Duck Creek.
- Management of mud tracking at Clyde MSF West.
- Management of potential heritage and vibration impacts from Northern Unwin St roadworks at Clyde MSF West (adjacent to RTA Depot façade – local heritage significance).



3 PHASE G – EASTERN TUNNEL PACKAGE

The Sydney Metro West Eastern Tunnel Package is Stage 2 of the Sydney Metro West CSSI and is described as major civil construction works between The Bays and Sydney CBD, including station excavation at Pyrmont and Hunter Street and tunnel excavation between the Bays and Hunter Street. Stage 2 (SSI 19238057) was approved on the 24 August 2022.

The Environmental Representatives for the Sydney Metro West Eastern Tunnel Package are:

- Michael Woolley
- Maulik Bapodara
- Swathi Gowda
- Jo Robertson

The Eastern Tunnelling Package (ETP) is being delivered by John Holland CPB Ghella Joint Venture (JCG) with the contract being awarded in November 2022. Sydney Metro notified DPHI that the date of commencement of construction was 17 March 2023. JCG have received Environmental Protection Licence (EPL 21784) for the project.

3.1 Key Construction Related Activities During the Period

Works conducted during the reporting period included:

Pyrmont East:

- Ongoing excavation of the station cavern (24/7), by two road headers with spoil load out by kibble and gantry crane in the temporary shaft within the acoustic shed.
- Ongoing excavation of the permanent shaft by multiple excavators with rock hammers operating under the steel deck.
- Removal of the tower crane footings by rock hammer under the steel deck. Hole in deck for the Tower Crane was infilled.
- Ongoing use and modification of the tunnel ventilation system including scrubber units located in the tunnel.
- Installation of roof on the plenum area of the shed. Ongoing fixing up of gaps in the acoustic shed wall. Ongoing use of site sheds on the upper deck.
- Set up of site amenities/sheds on the steel deck to the east of the acoustic shed.
- Removal of sheds from the ancillary facility in the parking lane on the south side of Union Street. Some containers still in place in the facility.
- Ongoing treatment of water generated from tunnelling activities and groundwater. Discharge of treated water to stormwater system.

Pyrmont West:

- Completion of the construction of the steel deck.
- Construction of the frame for the acoustic shed and commencement of installation of the acoustic panels.
- Ongoing excavation of the shaft by multiple rock hammers.
- Removal of accumulated sandstone spoil from excavation activities by truck using the steel deck as a loading point for trucks exiting to Pyrmont Street.

Hunter Street West:

- Conduct of archaeological excavation in De Mestre Place by heritage consultants. Recording of excavation and salvage of artefacts.
- Ongoing hard demolition of some sections of 5 Hunter Street and 300 George Street buildings with much of the buildings remaining as support for Skinners Hotel.
- Completion of demolition of 9 Hunter Street by excavators to slab level.
- Ongoing load out of demolition wastes including to George Street.
- Ongoing deliveries and pedestrian management along Hunter Street.
- Closure of western end of Hunter Street to traffic on 30 September.



Hunter Street East:

- Activities inside the Blich Street acoustic shed including ongoing excavation of the station cavern and various adits, turnback's, declines and ventilation shafts; stockpiling and load out of spoil. Construction of concrete support pillars. Use of air ventilation systems and other tunnelling support activities.
- Ongoing hard demolition of buildings on the site using multiple excavators with rock hammers and use of pulverisers where practicable. Electric tower crane in use during demolition works. Demolition was below ground level for all buildings during the reporting period.
- Spoil load out through the acoustic shed.
- Use of tunnel spoil and concrete for leveling of some areas of the site for pile pad construction.

The Bays:

- Ongoing tunnelling by TBM 'Jessie Street' towards Pymont. Operation of the slurry treatment plant and load out of spoil.
- Water treatment and discharge using the Construction water treatment plant.
- Ongoing operation of the slurry treatment plant; spoil shed and related equipment. Load out of spoil from the shed.
- Receival and storage of spoil from Hunter Street and Pymont sites and load out spoil.
- General support activities such as in the workshops, segment delivery and storage and use of site offices.
- Use of the truck marshalling area by trucks waiting to attend other project sites.
- Installation of flood barrier gates.

3.2 Key Construction Activities Look Ahead

The following works are planned to occur in October 2024:

- Ongoing activities as described above.
- Ongoing excavation of the cavern (24/7) and permanent shaft at Pymont East. Load out of spoil from site.
- Shaft excavation to commence at Hunter Street sites using rock hammers.
- Shaft excavation to continue at Pymont West.
- Ongoing tunnelling of TBM 'Jessie' at the Bays and treatment of slurry.

3.3 ER Inspections

Four ER inspections were conducted during the reporting period on each Tuesday. The following actions were raised during the month:

- Remove damaged sandbags at the stormwater pits on Hunter Street and replace ERSED controls.

Key discussion points during the month included completion of the acoustic shed at Pymont East; shutting the quick shut doors during the day on the Pymont East acoustic shed; archaeological works at Hunter West; and noise and vibration monitoring results. JCG were observed to be responsive to ER feedback during inspections and for the close out of actions raised.



3.3.1 Photos



Figure 3.1 Pyrmont East: Plenum roof installed.



Figure 3.2 Pyrmont East: Excavation of the permanent shaft using multiple excavators with rock hammers.



Figure 3.3 Pyrmont West: Construction of the acoustic shed.



Figure 3.4 Pyrmont West: Excavation under the steel deck using rock hammers.

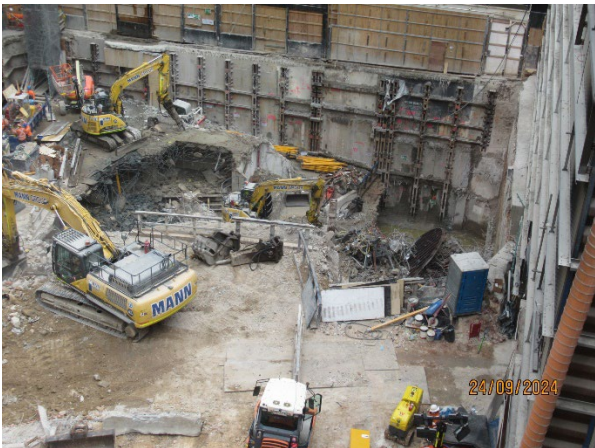


Figure 3.5 Hunter Street West: Archaeological Excavations in De Mestre Place.



Figure 3.6 Hunter Street East: Preparation for Pile pad construction.



Figure 3.6 Hunter St West: Demolition of buildings ceased while supports designed for Skinner’s Hotel.



Figure 3.7 Hunter Street West: Archaeological Excavations in De Mestre Place.

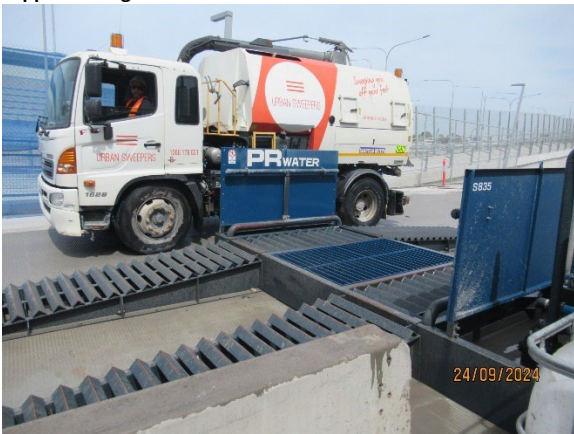


Figure 3.8 The Bays: Wheel wash for trucks and Street sweeper.

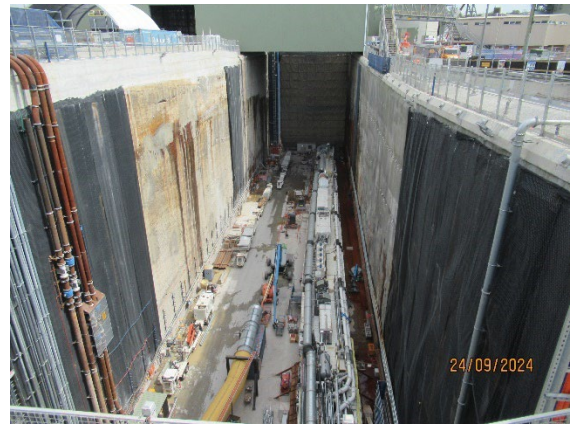


Figure 3.9 The Bays: Activities in the station box.

3.4 Endorsed document/s

The following documents were approved or endorsed during the reporting period.

- Minor Ancillary Application - Union Street Pymont East (Rev F) (extension of operation of the same facility).

In accordance with CoA A32(d)iii the written statements endorsing documents identified in A14, A21, C1, C5 and C14 are provided in Appendix A (if relevant).

3.5 Complaints

Seven complaints related to ETP activities were reported by Sydney Metro for September 2024 compared to 6 complaints received in August. Four of the complaints related to the Pymont sites and 3 related to the Hunter Street sites.

All four complaints at Pymont related to noise and vibration during standard hours. Three complaints were from Pymont East and one from Pymont West.

The three complaints reported for Hunter Street related to: water leaking into a tenancy and vibration generated from demolition activities during standard construction hours (Hunter Street West); and property damage to a vehicle.



3.6 Compliance

3.6.1 Incidents

No incidents considered to represent an Incident as defined under the Project Approval were reported to the ER during the reporting period.

Two incidents were reported to the ER through JCG's internal reporting systems:

- Some minor damage to the Pangas House (a heritage building) on Hunter Street adjacent to 9 Hunter Street. This occurred during demolition activities at 9 Hunter Street when some bricks that were bonded to a column being removed, came away from the building. It is understood JCG are preparing a repair methodology for the impact.
- A water hydrant that had been isolated at Hunter Street West was impacted on 7 September during demolition activities. JCG stated no environmental impact occurred and that water was directed to the cavern excavation and to the water treatment plant at Hunter Street East for treatment and discharge.

3.6.2 Non-compliance

No non-compliances were reported by JCG or Sydney Metro during the reporting period to the ER.

3.6.3 Audits

The most recent Independent Environmental Audit covering the ETP works commenced in August and continued in September 2024.

3.7 Looking Forward – Core Focus Areas

In the next reporting period, the ER Team will be focused on:

- General monitoring of construction activities; including TBM tunnelling at the Bays.
- Noise associated with the ongoing hard demolition activities and planned shaft excavation at the Hunter Street sites.
- Noise associated with excavation of the Pyrmont east shaft and OOHs tunnelling at Pyrmont East.
- Potential for tracking of dirt at the various demolition sites and at the Bays.



4 PHASE H - WESTMEAD UTILITY RELOCATION

The Sydney Metro West Phase H – Westmead Utilities Relocation involves the installation of new utility services around the new Sydney Metro Station at Westmead via Hawkesbury, Bailey and Hassell Streets.

The Environmental Representatives for the Sydney Metro West Eastern Tunnel Package are:

- Swathi Gowda
- Michael Woolley
- Maulik Bapodara

The Sydney Metro West Phase H – Westmead Utilities Relocation is being delivered by Quickway with the contract being awarded in August 2023.

No EPL will be required for this phase of Sydney Metro West.

4.1 Key Construction Related Activities During the Period

- Minor road maintenance works - Hawkesbury Rd completed (19 September 2024 – Standard Construction Hours)

4.1 Key Construction Activities Look Ahead

- Permanent restoration works (Scope and timing - TBC with Council).

4.2 ER Inspections

No ER inspections were completed during the reporting period.

4.2.1 Photos

None.

4.3 Endorsed Document/s

- Nil

4.4 Complaints

Nil complaints were provided to the ER for reporting period.

4.1 Compliance

4.1.1 Incidents

No incidents considered to represent Incidents as defined under the Project Approval were reported to or observed by the ER during the reporting period.

4.1.2 Non-compliance

No Non-Compliance Reports were provided to the ER during the reporting period.



4.1.3 Audits

Independent Environmental Audit #5 commenced in August 2024 with opening meeting on 19 August 2024. No further update in September 2024.

4.2 Looking Forward – Core Focus Areas

The core focus areas for the coming month are:

- Nil



5 SYDNEY METRO RETAINED OBLIGATIONS AND OTHER ACTIVITY

The Environmental Representatives for the Sydney Metro Retained Obligations and other Activities are:

- Jo Robertson
- Swathi Gowda

The Sydney Metro Retained Obligations and other Activities is being delivered by Sydney Metro with various sub-contractors delivering the works. These works do not require an EPL.

5.1 Key Construction Activities During the Period

The ER is not aware for other Sydney Metro managed construction activities during the period.

5.2 Key Construction Activities Look Ahead

The ER is not aware for other Sydney Metro managed construction activities during the period.

5.3 ER Inspections

There were no ER inspections of this work during the reporting period.

5.3.1 Photos

None

5.4 Endorsed Document/s

No Sydney Metro documents were endorsed during the reporting period.

5.5 Complaints

No complaints have been reported to the ER in relation to the investigations previously conducted for Sydney Metro.

5.6 Compliance

5.6.1 Incidents

No incidents have been reported to the ER in relation to the investigations previously conducted for Sydney Metro.

5.6.2 Non-compliance

No non compliances have been reported to the ER in relation to the investigations previously conducted for Sydney Metro.

5.6.3 Audits

No audits were conducted during the reporting period on this package or works.



6 STATEMENT OF LIMITATIONS

Healthy Buildings International (HBI) has prepared this report in accordance with the requirements of Condition A30(k) of the Sydney Metro West, Concept and Stage 1 SSI 10038 Approval (11 March 2021), and Condition A32(k) of the Sydney Metro West – The Bays to Sydney CBD SSI 19238057 Approval (24 August 2022).

The report is for the sole purposes of Department of Planning, Housing and Infrastructure (DPHI) and Sydney Metro. It has been prepared based on generally accepted practices and standards at the time it was prepared. No other warranty, expressed or implied, is made as to the professional advice included in this Report. This report did not assess any aspects relating to safety.

Where the Report indicates that information has been provided to HBI by third parties, HBI assumes no liability for any inaccuracies in or omissions to that information.

This Report was prepared based on the conditions encountered and information reviewed at this time. HBI disclaims responsibility for any changes that may have occurred after this time.

This Report should be read in full. No responsibility is accepted for use of any part of this report in any other context or for any other purpose or by third parties. This Report does not purport to give legal advice. Legal advice can only be given by qualified legal practitioners.

Except as required by law, no third party may use or rely on this Report unless otherwise agreed by HBI in writing. Except as specifically stated in this section, HBI does not authorise the use or findings of this Report by any third party

To the extent permitted by law, HBI expressly disclaims and excludes liability for any loss, damage, cost or expenses suffered by any third party relating to or resulting from the use of, or reliance on, any information contained in this Report. HBI does not admit that any action, liability or claim may exist or be available to any third party.



HBI Healthy Buildings International Pty Ltd

7 APPENDIX A – ER DOCUMENT ENDORSEMENT RECORDS (ETP ONLY)

Nil