



Table of Contents

1. Advanced and Enabling Works (AEW)	3
2. Station Boxes and Tunnelling (SBT)	7
3. Surface and Civil Alignment Works (SCAW)	12
4. Stations, Systems, Trains, Operations and Maintenance Package (SSTOM)	17
5. Statement of Limitations	21



1. Advanced and Enabling Works (AEW)

Contract Package	Environmental Representative/s
Advanced and Enabling Works (AEW)	[REDACTED]
Key Construction Activities During the Period	
<ul style="list-style-type: none"> ▪ St Marys Footbridge (FSM): <ul style="list-style-type: none"> ○ Piling works continued on platforms 1/2 and 3/4 ○ Spoil loadout to laydown area 1 and Hobart St occurred, material is awaiting waste classification before being removed from site ○ Cranes were utilised in the main compound to transfer materials and equipment to platform 3/4 ○ Further excavation and pile breakback occurred on both platforms ○ Installation of shoring boxing occurred on both platforms 	
Key Construction Activities Look Ahead	
<p>The Construction activities planned for the upcoming period for the Advanced Enabling Works (AEW) comprise of:</p> <ul style="list-style-type: none"> ▪ St Marys Footbridge: <ul style="list-style-type: none"> ○ Continuation of piling works ○ Material loadout following waste classification ○ Excavation will continue on both platforms ○ Preparation for possession on weekend 12 	
ER Inspections	
<p>There were two (2) inspections of the St Marys Station Footbridge contract undertaken by Mr [REDACTED] in August 2024.</p> <p>Key points/ issues raised during the inspections were as follows:</p> <ul style="list-style-type: none"> ○ Preliminary piling was undertaken to uncover as many unexpected finds as possible prior to the possession weekend works ○ Two unexpected finds were uncovered on the WE09 possession, the archaeologist was on site to make a recording and assessment ○ The platform excavation and piling was tidy with methods used to minimise spoil leaving the platform ○ The stockpile areas were in good condition, inspection of the ERSED controls by the contractor needs to be ongoing ○ The water recycling initiative is being finalised to allow recycling of site water for reuse in the works. The updated CEMP was submitted to the ER on 02/09/24 ○ Exclusion zones were established and complied with when working around the heritage building on platform 1/2 	
Photos	
St Marys Footbridge	



Compound - Cranes were setup in the compound to lift materials to and from platform 3/4



Compound - Previously stored spoil has been removed to allow material storage for WE09



Compound - Asbestos pipe located on platform 3/4 was wrapped and clearance certificate has been given.



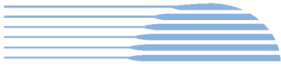
Platform 3/4 - Piling spoil was regularly removed, with no evidence of spillage beyond the platform



Platform 3/4 – Spoil was loaded out on the hydremas and taken to spoil location 1



Platform 1/2 - Piles were being broken back on platform 1/2



Platform 1/2 - An original brick footing was unearthed, the archaeologist was on site to assess the structure



Platform 1/2 - Barriers were present to prevent works inadvertently impacting on the platform building



Stockpile area 1 - ERSED controls were of a good condition to control impacts from stockpiled material



Hobart St Laydown - Moxy hydrexes were used to transfer spoil from platform 1/2 to the laydown areas at Hobart St



Hobart St Laydown - Spoil from platform 1/2 was loaded to specific areas bounded by jersey barriers with ERSED controls



Hobart St Laydown - Hybrid lighting towers were utilised along Hobart St to minimise noise impacts

Endorsed Document/s



The following documents were endorsed/approved by the ER (Mr [REDACTED]):

- Nil this period

The following documents were provided for information or reviewed with comments provided to Sydney Metro:

- Weekend 08 & WE12 (WE12), 24 August – 26 August 2024 & Weekend 12 (WE12), 21 September – 23 September 2024 OOHW Application rev 01 07/08/24

Complaints / Incidents / Non-compliance

No non-compliances were reported to or identified by the ER for the period.

No incidents were reported to the ER in June 2024:

No complaints were received during the period.

Audits (specific to packages reported in this report)

- Independent Environmental Audit 6 – Closing meeting to be held in early September 2024

Looking Forward – Core Focus Areas

Throughout August 2024 works occurred during normal construction hours and over WE08 and WE09 possessions. The contractor undertook noise monitoring during these OOHW periods to validate the noise predictions. All recorded noise was below predicted levels, except for one instance on WE08 during the evening period which resulted in a 1.5dB(A) exceedance. The ER requested further information regarding this result from the contractor and it was determined that the impact of this exceedance was negligible. Monitoring for OOHW works over WE12 will be undertaken with an assessment to be made if the methods or equipment differs from the evening period in WE08, that resulted in the 1.5dB(A) exceedance.

ER Closing Comments:

A number of weekend possessions are coming up for the contractor, so far these possessions have been managed well and the ER intends to be closely involved with the planning sessions. Contractor senior management was present during the recent ER inspection over WE09 and the ER has requested that this level of commitment continue for the future possessions. The key issues regarding the works include:

- Mud tracking
- Noise
- Heritage impacts
- Interaction with members of the community
- Dust

To date these issues have been generally managed well with most issues identified by the contractor before the ER attends site.



2. Station Boxes and Tunnelling (SBT)

Contract Package	Environmental Representative/s
Station Boxes and Tunnelling (SBT)	[REDACTED]
Key Construction Activities During the Period	
<ul style="list-style-type: none"> ▪ St Marys: <ul style="list-style-type: none"> ○ Tower Crane removal, bus interchange reinstatement and site demobilisation. ○ SBT portion of St Mary’s site was handed back to SSTOM ▪ Claremont Meadows Services Facility: <ul style="list-style-type: none"> ○ Water treatment plant operating. ○ Waterproofing in shaft ○ Storage of surplus construction materials from other northern sites ○ Cross passage excavation, and soil storage and haulage offsite. ○ Concrete deliveries to tunnel for invert works and shotcreting, including outside Construction Hours. ▪ Orchard Hills: <ul style="list-style-type: none"> ○ Site topsoil/spoil storage, and additional characterisation in preparation for haulage offsite. ○ Cross passage material storage and haulage offsite. ○ Operation and maintenance of ERSED controls. ○ Tunnel support infrastructure removal ○ Tunnel portal waterproofing and base slab FRP ○ Water treatment plant operation and disposal to trade waste at Claremont Meadows. ○ Demobilisation of plant and equipment from laydown areas ▪ Aerotropolis/Bradfield: <ul style="list-style-type: none"> ○ Tower Crane removal, bus interchange reinstatement and site demobilisation. ○ SBT portion of Aerotropolis/Bradfield site was handed back to SSTOM ▪ Bringelly Services Facility: <ul style="list-style-type: none"> ○ Storage of surplus construction materials from other southern sites. ○ Cross passage ramp soil storage and haulage offsite ○ Concrete deliveries to tunnel 	
Key Construction Activities Look Ahead	
<ul style="list-style-type: none"> ▪ Claremont Meadows Services Facility: <ul style="list-style-type: none"> ○ Continue erosion and sediment controls operation and maintenance. ○ Continue Water Treatment Plant operation and maintenance. ○ Storage of surplus construction materials from other northern sites. ○ Cross passage soil storage and haulage offsite. ○ Concrete deliveries for invert construction, including outside Construction Hours. ○ Handover to SSTOM in November 2024 ▪ Orchard Hills: <ul style="list-style-type: none"> ○ Disposal of surplus topsoil/spoil stockpile offsite. 	



- Operation and maintenance of ERSED controls.
 - Tunnel support infrastructure removal
 - Tunnel portal water proofing and base slab FRP
 - Water treatment plant operation and disposal to trade waste at Claremont Meadows.
 - Demobilisation of plant and equipment from laydown areas
 - Site demobilisation
 - Earthworks and drainage for handover to SSTOM in early November 2024
- Bringelly Services Facility:
 - Continue Erosion sediment controls operation and maintenance.
 - Tunnelling support activities, including concrete deliveries outside Construction Hours.
 - Handover to SSTOM in December 2024

ER Inspections

There were three (3) routine ER Inspections conducted on 1/8/24, 15/8/24 and 29/8/24 by Mr [REDACTED]

Key points/ issues raised during the inspections were as follows:

- Most actions from previous inspections have been closed.
- Sites were generally well managed with some improvements made to site design to improve environmental outcomes.
- At Bringelly, concreting to cover the laydown/loading area, and cleanup and resealing of chipseal roads has resulted in significant reduction in tracking on and offsite.
- Concrete washout management processes have improved throughout, with only activities in one of the management areas at Claremont requiring additional intervention.
- Some increased tracking was noted on internal roads from the cross passage spoil storage area at Orchard Hills, however, this did not translate to tracking offsite and only requires monitoring and management through housekeeping as appropriate.
- At Claremont meadows, it was discussed that there was some deterioration of internal haul roads which needs monitoring and repairs to the chipseal surface where appropriate, before it fails.

ER inspections are on a fortnightly cycle.

Photos



Orchard Hills – Eastern topsoil/spoil stockpile



Kent road at site access – Negligible tracking from SBT.



Orchard Hills tunnel portal – Waterproofing.



Orchard Hills tunnel portal – FRP for base slab.



Orchard Hills south view north – Some accumulations noted on haul road from X passage spoil storage area.



Orchard Hills view west – Former tunnel segment storage area used to store materials for haulage offsite.



Claremont Meadows south, view to HV exit – Internal haul road in good condition.



Claremont Meadows concrete washout area north of Shaft – Needs Improved design and management.



Claremont Meadows – Negligible tracking noted on Gipps Rd. at southern site access.



Claremont Meadows – Waterproofing underway in shaft.



Claremont Meadows view north of shaft – Concrete delivery and washout well managed.



Bringelly – Negligible tracking noted at Derwent Rd exit.



Bringelly – Condition of sealed internal haul roads in good condition.



Bringelly – Concrete deliveries to drop pipe west of shaft well managed.



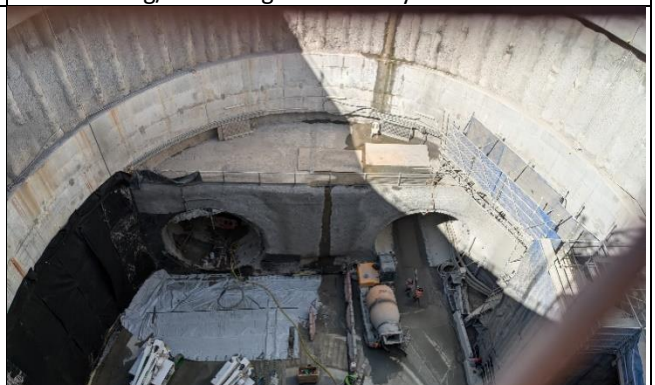
Bringelly view east to shaft – Concrete slab placed over loading/unloading areas.



Bringelly view west from shaft – Concrete slab placed over loading/unloading and delivery areas.



Bringelly view north east, west of shaft – Concrete washout well managed.



Bringelly – Waterproofing underway in shaft.



Endorsed Document/s
<p>The following documents were endorsed/approved by the ER:</p> <ul style="list-style-type: none">▪ NSW (Off-Airport) Soil and Water Management Sub-Plan- Sydney Metro Western Sydney Airport Station Boxes and Tunnelling Works, Revision 02 dated 15/08/2024 - Approved▪ Surface Water Quality Monitoring Program - Sydney Metro Western Sydney Airport Station Boxes and Tunnelling Works, Revision 02 dated 20/02/2024 - Approved▪ Groundwater Monitoring Program - Sydney Metro Western Sydney Airport Station Boxes and Tunnelling Works, Revision 4 of 12/08/2024 – Endorsed for Approval by the Secretary <p>The following documents were provided for information or review as applicable:</p> <ul style="list-style-type: none">▪ July Monthly Monitoring Reports comprising Dust (real-time), Noise and Surface Water.▪ SM WSA - SBT - St Marys Station PRB Monthly Mitigation Monitoring Report 11 - May 2024▪ SM WSA - SBT - St Marys Station PRB Monthly Mitigation Monitoring Report 12 - June 2024
Complaints / Incidents / Non-compliance
<p>There were no Non-Compliances with the Approval raised by or reported to the ER this period There were no incidents of note identified by or reported to the ER this period.</p> <p>Five (5) complaints were reported to the ER, a marked decrease from the previous month:</p> <ul style="list-style-type: none">▪ One (1) from Claremont Meadows related to noise out of hours.▪ One (1), from Orchard Hills, related to noise out of hours .▪ One (1) from Orchard Hills, related to vehicle damage on Kent Rd.▪ One (1) from Bringelly related to street sweeper use.▪ One (1) from Bringelly related to unauthorised/unannounced entry to property by community engagement team. <p>The complaints above are under investigation or review by Sydney Metro and CPBG, as detailed in the register.</p>
Audits (specific to packages reported in this report)
<ul style="list-style-type: none">▪ Independent Environmental Audit 6 – Closing meeting to be held in early September 2024
Looking Forward – Core Focus Areas
<p>Risks now relate to tunnel support activities at Bringelly, and Claremont Meadows. Of note are:</p> <ul style="list-style-type: none">▪ OOH noise management at Bringelly for concrete pumping activities into the shaft▪ OOH noise management at Claremont for concrete pumping activities into the shaft <p>ER Closing Comments: The contractor continues to apply good environmental management practices and is receptive to suggestions to improve early planning of works aimed at limiting environmental impacts.</p>



3. Surface and Civil Alignment Works (SCAW)

Contract Package	Environmental Representative/s
Surface and Civil Alignment Works (SCAW)	[REDACTED]
Key Construction Activities During the Period	
<ul style="list-style-type: none"> ▪ Patons Lane <ul style="list-style-type: none"> ○ Sandstone import over northern tributary stream culvert is complete, finishing works continue ○ Weed spraying continuing ○ Hydromulching activities are ongoing ▪ SMF <ul style="list-style-type: none"> ○ Additional geotechnically unsuitable material is being added to PS105 ○ Borg dam finishing works ○ Drainage line works ▪ Defence Land <ul style="list-style-type: none"> ○ Drainage works ongoing ○ Abutment construction towards the Warragamba pipeline ○ Viaduct segments have been installed over the Warragamba pipeline ▪ Luddenham Station <ul style="list-style-type: none"> ○ Construction of Luddenham Rd roundabout is complete ○ Structural station works continue. ○ Viaduct segment installation south of the Warragamba pipeline ▪ Luddenham Road South <ul style="list-style-type: none"> ○ Area is in caretaker period, to be handed over to SSTOM in September 2024 ▪ M12 to Cosgrove’s Creek <ul style="list-style-type: none"> ○ Area is in caretaker period, to be handed over to SSTOM in September 2024 ▪ Elizabeth Drive <ul style="list-style-type: none"> ○ Topsoiling and hydromulching continues ○ Works are occurring underneath the M12 bridge 	
Key Construction Activities Look Ahead	
<ul style="list-style-type: none"> ▪ Patons Lane: <ul style="list-style-type: none"> ○ Finalising rehabilitation works ○ Installation of road furniture e.g. barriers ○ Weed control continues ▪ Stabling and Maintenance Facility (SMF) Orchard Hills: <ul style="list-style-type: none"> ○ Rehabilitation works ongoing ○ Geotechnically unsuitable material will continue to be added to PS105 ▪ Defence Land: <ul style="list-style-type: none"> ○ Finishing works ongoing ○ Abutments to be continued 	



- Drainage lines and final design to be completed
- Luddenham Station:
 - Rehabilitation of disturbed areas
 - Viaduct segment placement to continue south of the Warragamba pipelines
- Luddenham Road South:
 - Area is in caretaker period to be handed over to SSTOM in August 2024
- M12 to Cosgroves Creek:
 - Area is in caretaker period, to be handed over to SSTOM August 2024
- Elizabeth Drive:
 - Filling and earthworks continuing
 - Topsoiling and hydromulching
 - Permanent alignment drainage works ongoing

ER Inspections

There were two (2) ER Inspections conducted on 08/08/24 and 22/08/24 by Mr [REDACTED]

Key points/issues raised during these inspections were as follows:

- Areas north and south of Cosgrove’s Creek are now in caretaker mode and will be handed over to SSTOM in September 2024
- Blaxlands Creek catchment has been stabilised and is nearing completion
- As additional areas near completion, ERSED controls should remain until the catchment is fully stabilised
- There are some areas that have been reworked and are now unconsolidated, these areas need to be monitored and consolidated to reduce erosion potential
- The project continues to source the majority of water from sediment basins as opposed to potable sources. This is being tracked in the sustainability report.
- Revegetation has largely been successful across the project

ER inspections are on a fortnightly cycle weather and health permitting.

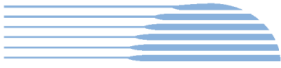
Photos



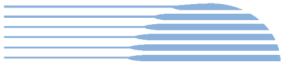
M12 Bridge - Rock in both the onsite and off-site drains was being removed and cleaned



M 12 Bridge - Topsoil is being spread on the batters awaiting hydromulching



<p>Luddenham North – Viaduct works progress across the Warragamba Pipelines</p>	<p>Luddenham North – Sediment fence installed adjacent the batter, and polymer will be applied to the batter</p>
<p>Defence - Small piles of material placed where impacted by water, ER requested this material be relocated ASAP</p>	<p>Defence - The northern abutment over the Warragamba Pipeline is progressing</p>
<p>Defence - The northern viaduct approaches the southern abutment</p>	<p>Defence – This drain to Unnamed Creek is a work in progress and will be lined to minimise scour risk</p>
<p>Patons Lane - Channel stabilisation is progressing successfully along the alignment at Patons Lane</p>	<p>Blaxland's Creek - Waste from the Borg Dam is being loaded out and sent to a licenced waste facility.</p>



Blaxland's Creek - The downstream channel has been rehabilitated, with rubbish removed and areas stabilised



Blaxland's Creek - All disturbed areas within the catchment have now been hydromulched



Blaxland's Creek - Final area of Blaxland's Crk bank has stabilised/hydromulched. Guard rails are being installed



Blaxland's Creek - The bridge north of Blaxland's Creek is nearing completion



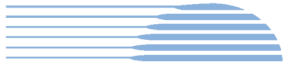
Lansdowne Road - The haul road is nearing completion, controls are of a good quality and appear to be effective



Cosgrove's Creek - Drainage channels north of Creek complete. Exposed areas revegetated in caretaker mode

Endorsed Document/s

- The following documents were endorsed/approved by the ER:
- Construction Environmental Management Plan Revision 4, dated 29 July 2024
 - Flora and Fauna Management Plan Revision 3, dated 19/06/2024
 - Noise and Vibration Management Sub Plan Revision 4, dated 19/06/2024
 - Noise and Vibration Construction Monitoring Program Revision 4, dated 19/06/2024



- Soil and Water Management Sub Plan Revision 4, dated 30/07/2024
- Surface Water Quality Construction Monitoring Program Revision 4, dated 30/07/2024
- Air Quality Construction Monitoring Program Revision 4, dated 30/07/2024

The following documents were provided for information or reviewed:

- Air Quality Management Plan Revision 4, dated 30/07/2024

Complaints / Incidents / Non-compliance

There were no Non-Compliances with the Approval raised by or reported to the ER this period

There were no incidents of note identified by or reported to the ER this period.

There was one complaint reported to the ER this period:

- The complaint related to air quality and noise during construction hours nominated under E38

Audits (specific to packages reported in this report)

- Independent Environmental Audit 6 – Closing meeting to be held in early September 2024

Looking Forward – Core Focus Areas

Whilst the project is starting the handover process for some areas, the controls and approach to compliance needs to be maintained for the rest of the project duration. The ER has reminded the project team of this and will monitor compliance via document requests and continued site inspections.

ER Closing Comments: Despite the project completing some areas, the environmental resources have not been scaled down as of yet. This is good to see as effort will be required in managing compliance and collating evidence as the project approaches completion. Areas of the project around Elizabeth Drive are still undertaking earthworks and have significant future activities planned, as a result the following issues are still considered significant:

- Dust
- Mud tracking
- Erosion and Sediment control
- Water management



4. Stations, Systems, Trains, Operations and Maintenance Package (SSTOM)

Contract Package	Environmental Representative/s
Stations, Systems, Trains, Operations and Maintenance Package (SSTOM). Contractor Parklife Metro (PLM)	<div style="background-color: black; width: 100%; height: 15px; margin-bottom: 5px;"></div> <div style="background-color: black; width: 100%; height: 15px;"></div>
Key Construction Activities During the Period	
<ul style="list-style-type: none"> ▪ St Mary’s Station (STM): <ul style="list-style-type: none"> ○ Waterproofing is ongoing. ○ Concrete base and wall pours are ongoing. ▪ Orchard Hills Station (ORH): <ul style="list-style-type: none"> ○ Station box base slab ongoing ○ Waterproofing ongoing ○ Sump construction in the box ongoing ○ Concrete batch plant base slabs are ongoing ○ Construction of batch plant ongoing ○ New light vehicle entrance from Lansdowne Road completed ○ Eastern access entrance to concrete batch plant completed ▪ Stabling and Maintenance Facility (SMF): <ul style="list-style-type: none"> ○ Deliveries ongoing from Western Tunnelling Package (Metro West) for pad fill mostly completed ○ Minor substation earthworks ongoing, FRP commenced ○ Permanent stormwater drainage ongoing ○ Connection of 132kv power ongoing ○ Weed spraying undertaken for ~90% of the site ▪ Luddenham Station (LUD): <ul style="list-style-type: none"> ○ Detailed excavation of station mostly completed ○ Extension of light vehicle car park ongoing, sealing in September ○ Testing of stockpiles for reuse at Bradfield ○ Reduction of swale drain completed ○ Pile break back completed ▪ Bradfield Station (Aerotropolis Core AEC): <ul style="list-style-type: none"> ○ Base slab pours ongoing ○ Sump construction ongoing ○ Backfilling of eastern clean water diversion commenced (noted that water to be piped to the southern drain and discharged via sediment basin) 	
Key Construction Activities Look Ahead	
<ul style="list-style-type: none"> ▪ St Mary’s Station (STM): <ul style="list-style-type: none"> ○ Slab pours ongoing, likely to utilise out of hours for larger pours ○ Tower crane 2 erection to occur (likely in September) 	



- Waterproofing ongoing
- Orchard Hills Station (OHS):
 - Box sump and drainage works
 - Batch plant construction (expected to be completed in early September)
 - Waterproofing and base slab pours continue
- Stabling and Maintenance Facility (SMF):
 - Ongoing importation of material to continue (expected to be completed end of September).
 - Connection of 132kv power to continue.
 - Construction of the transformer to continue
 - Additional area for stockpiling. (SCAW handover to SSTOM)
 - Permanent stormwater drainage to continue
- Luddenham Station(LUD)
 - Car park extended and resurfaced (expected mid-August)
 - Detailed excavation of the station area minor works
- Bradfield Station (Aerotropolis Core - AEC):
 - Realignment of drains, PLM investigating timeline for permanent stormwater drainage installation
 - AEC discharge pipeline (currently descoped)
 - Earthworks to commence
- Linewide
 - Handover Mid to late September

ER Inspections

There was one ER Inspection conducted this period, on 20/08/24 by Mr [REDACTED]

Key points/issues raised during these inspections were as follows:

- STM – It was noted that several contractor vehicles were parked outside of the Phillip Street site entrance. PLM were reminded of the parking strategy for the area and are currently updating the CEMP for monitoring and discussions are ongoing on processes to manage before the works ramp up.
- STM – noise mitigation for the tower crane was ongoing. It was noted that an arrangement was in place with TC1 to have a shroud installed (likely 2-4 weeks) and TC 2 will be installed before setup.
- STM – minor graffiti was pending removal from the hoarding.
- ORH - The turkey nest and sumps were being managed onsite.
- ORH - Maintenance of ESC and removal of sediment continued to be implemented.
- ORH –concrete batch plant – minor tracking from the stabilised concrete entrance was noted, and street sweeper frequency was increased during the inspection.
- ORH – PLM relocated the site generator and battery pack to the eastern side of the Compound. Noise testing indicated NML compliance with nearby residential receivers.
- SMF – Weed spraying indicated a broad-scale herbicide may have been used. PLM is in discussions with weed contractors to use a more targeted herbicide.
- LUD and AER –Very minor ERSED tracking noted, PLM organised street sweepers to clean tracking.



Photos	
	
STM – View of TC1 and pad towards the footbridge	STM – Site egress points were maintained
	
ORH - Relocation of site generator and battery	ORH – Box and batch plant
	
ORH – Minor tracking and small pothole (maintenance for both organised during inspection)	ORH –ESC and preparation for concrete pad extension
	
SMF – Weed dieback from weed spraying	SMF – Drainage works continued



<p>LUD – shipping container bridge installed and reduction of swale commenced</p>	<p>AEC - box and laydown areas</p>
--	---

Endorsed Document/s

The following documents were endorsed/approved by the ER:

- Nil this period

The following documents were provided for information or reviewed with comments provided to Sydney Metro:

- SMWSA SSTOM Submissions Board, Submissions Forecast & ICD Submissions Board - August 2024
- Soil and Water Management Sub-Plan - Rev 02.03 updated
- Groundwater Monitoring Program - Rev 01.03
- Detailed Noise and Vibration Impact Statement - Concrete Works - Rev 01
- Surface Water Quality Monitoring Program - Rev 02 –
- Orchard Hills HVLR Samuel Marsden Road Traffic Report - Rev A –
- Noise and Vibration Management Sub-Plan - Rev 02.02
- Noise and Vibration Monitoring Program - Rev 02

Complaints / Incidents / Non-compliance

There was one Non-Compliance with the Approval reported to the ER during this period:

- Non-compliance with Condition E41 b) (i) for noise the Orchard Hills site generator exceeding NML at two receivers. Generator was relocated and further monitoring indicated that it is now NML compliant.

There were no incidents of note identified by or reported to the ER this period.

The following complaints were reported to the ER during the period:

- ORH – A complaint was received for a pothole outside of the construction area. PLM agreed to repair as a measure of good faith with the community.

Audits (specific to packages reported in this report)

- IEA#2 commenced in August. The auditor site inspection was held on 14 August and RFIs are being worked through by Sydney Metro and PLM.

Looking Forward – Core Focus Areas

The focus continues to be the review and implementation of the CEMP and sub-plans, with a particular focus on preparation for storm season erosion and sediment controls and parking at STM. Line handover is expected during August and the alignment will be split between North and South as additional areas come online for PLM.

ER Closing Comments: A change in Environmental Manager for PLM will be monitored during September. Senior site staff are in place to keep day-to-day running of activities under check and have been preparing for the August audit. It is noted that the environmental staff have been proactive in looking at alternate options to minimise site impacts.

5. Statement of Limitations

Healthy Buildings International (HBI) has prepared this report in accordance with the requirements of Condition A32 (k) of the Sydney Metro Western Sydney Airport, Concept and Stage 1 SSI 10051 Approval (23 July 2021). The report is for the sole purposes of the Department of Planning, Housing and Infrastructure (DPHI) and Sydney Metro. It has been prepared based on generally accepted practices and standards at the time it was prepared. No other warranty, expressed or implied, is made as to the professional advice included in this Report. This report did not assess any aspects relating to safety.

Where the Report indicates that information has been provided to HBI by third parties, HBI assumes no liability for any inaccuracies in or omissions to that information.

This Report was prepared based on the conditions encountered and information reviewed at this time. HBI disclaims responsibility for any changes that may have occurred after this time.

This Report should be read in full. No responsibility is accepted for use of any part of this report in any other context or for any other purpose or by third parties. This Report does not purport to give legal advice. Legal advice can only be given by qualified legal practitioners.

Except as required by law, no third party may use or rely on this Report unless otherwise agreed by HBI in writing. Except as specifically stated in this section, HBI does not authorise the use or findings of this Report by any third party

To the extent permitted by law, HBI expressly disclaims and excludes liability for any loss, damage, cost or expenses suffered by any third party relating to or resulting from the use of, or reliance on, any information contained in this Report. HBI does not admit that any action, liability or claim may exist or be available to any third party.



HBI

Healthy Buildings International Pty Ltd

A.C.N. 003 270 693

A.B.N. 39 003 270 693

Suite 2.06, Level 2
29-31 Solent Circuit
Norwest NSW 2153

Tel: 61 (02) 9659 5433
e-mail: hbi@hbi.com.au
Web:

www.hbi.com.au

30 August 2024

[REDACTED]
Director Sustainability Environment & Planning SMWSA
Sydney Metro
Transport for NSW
PO Box K659
HAYMARKET NSW 1240

Ref: 201209(c)_AQ-CMP_R4

Dear [REDACTED]

RE: Endorsement of Air Quality Monitoring Program - Sydney Metro Western Sydney Airport Surface and Civil Alignment Works

Thank you for providing the Air Quality Construction Monitoring Program Sydney Metro Western Sydney Airport Surface and Civil Alignment Works (Revision 4), dated 30 July 2024 (the AQ-CMP) for Environmental Representative (ER) review and endorsement, as required by Conditions of Approval C13(d) of the Sydney Metro Western Sydney Airport project approval (SSI 10051 July 23, 2021):

The main change to the above document is the adjustment of DDG2 monitoring location to better reflect and monitor dust levels generated by the project works.

It is noted that:

- Previous versions of the document have been reviewed and updated following comments from the ER.
- Sydney Metro have also reviewed and commented on the relevant document.
- Evidence of consultation records has been provided to the ER for the AQ-CMP.
- Following the above reviews, the document is considered to contain the information and consultation required.

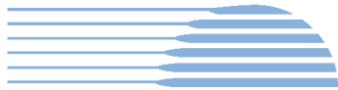
Accordingly, as an approved ER for the Sydney Metro Western Sydney Airport project, I now consider the AQ-CMP consistent with the requirements in or under the Infrastructure Approval and the undertakings made in the documents listed in Condition A1.

Yours sincerely

[REDACTED]

[REDACTED]

Environmental Representative – Sydney Metro Western Sydney Airport



HBI

Healthy Buildings International Pty Ltd

A.C.N. 003 270 693

A.B.N. 39 003 270 693

Suite 2.06, Level 2
29-31 Solent Circuit
Norwest NSW 2153

Tel: 61 (02) 9659 5433
e-mail: hbi@hbi.com.au
Web:

www.hbi.com.au

05 August 2024

██████████
Director Sustainability Environment & Planning SMWSA
Sydney Metro
Transport for NSW
PO Box K659
HAYMARKET NSW 1240

Ref: 201209(c)_CEMP_R4

Dear ██████████

RE: Endorsement of Construction Environmental Management Plan - Sydney Metro Western Sydney Airport Surface and Civil Alignment Works

Thank you for providing the Construction Environmental Management Plan Sydney Metro Western Sydney Airport Surface and Civil Alignment Works (Revision 4), dated 29 July 2024 (the CEMP) for Environmental Representative (ER) review and endorsement, as required by Conditions of Approval C1, C2, C3 and C13(d) of the Sydney Metro Western Sydney Airport project approval (SSI 10051 July 23, 2021):

The CEMP contains the following construction sub-plans and monitoring programs, therefore these documents form part of this review and endorsement:

- The Flora and Fauna Management Plan Revision 3, dated 19/06/2024 (FFMP)
- Noise and Vibration Management Sub Plan (NVMP) Revision 4, dated 19/06/2024 which includes the Noise and Vibration Construction Monitoring Program (NV-CMP)
- Soil and Water Management Sub Plan (SWMP) Revision 4, dated 30/07/2024 which includes the Surface Water Quality Construction Monitoring Program (SW-CMP)

The main changes to the above documents includes clarification of the activities that are involved in each phase of the works, clarified plant noise auditing triggers to minimise ambiguity, clarity added for decontamination and quality assurance, and updated reference numbering.

It is noted that:

- Previous versions of the documents have been reviewed and updated following comments from the ER.
- Sydney Metro have also reviewed and commented on the relevant documents.

- Evidence of consultation records has been provided to the ER for the FFMP, NV-CMP, NVMP, SW-CMP and SWMP.
- Following the above reviews, the documents are considered to contain the information and consultation required.

Accordingly, as an approved ER for the Sydney Metro Western Sydney Airport project, I now consider the CEMP, the FFMP, the NV-CMP, the NVMP, the SW-CMP and the SWMP consistent with the requirements in or under the Infrastructure Approval and the undertakings made in the documents listed in Condition A1.

Yours sincerely



Environmental Representative – Sydney Metro Western Sydney Airport

15 August 2024

██████████
Director Sustainability Environment & Planning SMWSA
Sydney Metro
Transport for NSW
PO Box K659
HAYMARKET NSW 1240

Ref: 201209(b)_SWMP_R02

Dear ██████████

RE: Approval of Minor Amendments to the Soil and Water Management Sub-Plan - Sydney Metro Western Sydney Airport Station Boxes and Tunnelling Works, Rev 1

Thank you for providing the following documents for Environmental Representative (ER) review and approval prior to implementation in accordance with Minister's Condition Of Approval (MCoA) A32(j) of the Sydney Metro Western Sydney Airport project (SSI – 10051 July 23, 2021):

- *NSW (Off-Airport) Soil and Water Management Sub-Plan- Sydney Metro Western Sydney Airport Station Boxes and Tunnelling Works, Revision 02 dated 15/08/2024; and*
- *Surface Water Quality Monitoring Program - Sydney Metro Western Sydney Airport Station Boxes and Tunnelling Works, Revision 02 dated 20/02/2024 (together referred to hereafter as the CSWMP Rev 02).*

As an approved ER for the Sydney Metro Western Sydney Airport project, I have reviewed the following proposed minor amendments in the CSWMP Rev 02:

1. **Compliance table** – References updated to reflect that the Groundwater Monitoring Program is no longer an Annexure of the CSWMP but a standalone document.
2. **Figure 1** – Updated to reflect that the Groundwater Monitoring Program is no longer an Annexure of the CSWMP but a standalone document.
3. **Section 1.4** – Updated to reflect that Construction has commenced and that the Groundwater Monitoring Program is no longer an Annexure of the CSWMP but a standalone document.
4. **Section 1.5** – Updated to reflect that the Groundwater Monitoring Program is no longer an Annexure of the CSWMP but a standalone document.
5. **Figure 2** – Changed to better reflect SBT's specific scope of works.

6. **Table 2** – Updated to delete “subject to Sydney Metro approval” in reference to invert construction support (pouring of an invert concrete slab in the tunnel) at Claremont Meadows Services Facility and Bringelly Services Facility, and add “Tunnel Support” at Claremont Meadows, reflecting Sydney Metro approval of these activities, after being assessed via Sydney Metro Environment Reviews, to be in accordance with Conditions A1 and A2 of the CSSI (SSI 10051).
7. **Section 6.2** – Updated to reflect that the Groundwater Monitoring Program is no longer an Annexure of the CSWMP but a standalone document.
8. **Section 7.2** – Updated to reflect that the Groundwater Monitoring Program is no longer an Annexure of the CSWMP but a standalone document.
9. **Section 7.6.2 Sediment basin monthly monitoring** – Deleted and replaced with “**Water Treatment Plant Sampling**” to reflect EPL 21672 current, as amended, Sediment Basin and Water Treatment Plant discharge monitoring requirements.
10. **Element 4: Package specific requirements** - Revised Environmental Protection Licence compliance table to reflect that the Groundwater Monitoring Program is no longer an Annexure of the CSWMP but a standalone document , and to resolve inconsistencies with the revised Surface Water Monitoring Program.
11. **Element 4: Package specific requirements** - Updated Environmental Protection Licence compliance table to reflect EPL 21672 current, as amended, requirements.
12. **Annexure B: Surface Water Quality Monitoring Program** - Revised to reflect EPL 21672 current, as amended, monitoring requirements, and clarify other monitoring and reporting obligations/commitments.

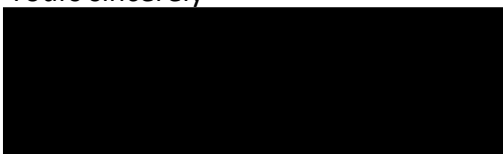
It is noted that:

- Previous versions of the documents have been reviewed and updated following comments from the ER
- Sydney Metro have also reviewed and commented on the documents

Based on the information reviewed, in my opinion, the proposed changes constitute a minor amendment pursuant MCoA A32 (j). Accordingly, as an approved ER for the Sydney Metro Western Sydney Airport project, I approve the amended CSWMP Rev 02.

The Project is reminded to ensure the most recently approved CSWMP (the CSWMP Rev 02) is made publicly available on the Project’s website.

Yours sincerely



Environmental Representative



HBI

Healthy Buildings International Pty Ltd

A.C.N. 003 270 693

A.B.N. 39 003 270 693

Suite 2.06, Level 2
29-31 Solent Circuit
Norwest NSW 2153

Tel: 61 (02) 9659 5433
e-mail: hbi@hbi.com.au
Web:

www.hbi.com.au

22 August 2024

██████████
Director Sustainability Environment & Planning SMWSA
Sydney Metro
Transport for NSW
PO Box K659
HAYMARKET NSW 1240

Ref: 201209(b)_GWMonProg_R4

Dear ██████████

RE: Endorsement of Construction Groundwater Monitoring Program - Sydney Metro Western Sydney Airport Station Boxes and Tunnelling Works

Thank you for providing the following document for Environmental Representative (ER) review and endorsement prior to submission to the Planning Secretary, as required by Conditions of Approval C13, C17, and C19 of the Sydney Metro Western Sydney Airport project (SSI 10051 July 23, 2021):

- Groundwater Monitoring Program - Sydney Metro Western Sydney Airport Station Boxes and Tunnelling Works, Revision 4 of 12/08/2024 (the GWMonProg)

It is noted that:

- The GWMonProg is the result of amendments triggered by new baseline data from the initial 6 months of monitoring that were deemed not minor in nature
- Previous versions of the GWMonProg have been reviewed and updated following comments from the ER
- Sydney Metro have also reviewed and commented on the GWMonProg
- Evidence of consultation records has been provided to the ER
- Following the above reviews, the GWMonProg is considered to contain information and consultation required

Accordingly, as an approved ER for the Sydney Metro Western Sydney Airport project, I now consider the GWMonProg consistent with the requirements in or under the Infrastructure Approval and the undertakings made in the documents listed in Condition A1, and endorse the GWMonProg for submission to the Planning Secretary for approval pursuant Condition of Approval C19.

Yours sincerely



Environmental Representative