

Mr Rob Sherry
Team Leader Compliance – Government Projects
Department of Planning, Housing and Infrastructure
Locked Bag 5022
PARRAMATTA NSW 2124

7 May 2024

Ref:201208-ER_DPHI-May 2024

Dear Rob

RE: Sydney Metro - Sydney Metro West SSI - ER Monthly Report for May 2024

Healthy Buildings International (HBI) submits this report to the Secretary in accordance with:

- Condition A30 (k) of the Sydney Metro West, Concept and Stage 1 SSI 10038 Approval (11 March 2021), and associated modifications (MOD 1 - 28 July 2021, MOD 2 - 3 June 2022, MOD3 – 4 July 2022, MOD 4 - 23 December 2022 and MOD 5 – 20 September 2023); and
- Condition A32(k) of the Sydney Metro West – The Bays to Sydney CBD SSI 19238057 Approval (24 August 2022).

The attached summary details the key activities undertaken by Environmental Representatives for Sydney Metro – Sydney Metro West for the month of May 2024.

Yours sincerely



Greg Byrnes
Environmental Representative

Cc:

DPHI: Major Projects Portal

Sydney Metro: Matthew Marrinan, John Ieroklis, Andrew Hendy, Cath Snelgrove, Ari Stypel, Ben Armstrong, Sarah Kemp, Syed Shah, Valerie Lebon

Contractors: Jared Lipton (AFJV), Steph Mifsud (GLC), Sally Reynolds (JCG), Tom St Vincent Welch (Quickway)



Table of Contents

1	Phase B - Central Tunnelling Package	4
1.1	Key Construction Activities During the Period	4
1.2	Key Construction Activities Look Ahead	5
1.3	ER Inspections	5
1.3.1	Photos	6
1.4	Endorsed Document/s	7
1.5	Complaints	7
1.6	Compliance	7
1.6.1	Incidents	7
1.6.2	Non-compliance and Potential Non Compliance	7
1.6.3	Audits	7
1.7	Looking Forward – Core Focus Areas	7
2	Phase F – Western Tunnelling Package	8
2.1	Key Construction Activities During the Period	8
2.2	Key Construction Activities Look Ahead	9
2.3	ER Inspections	9
2.3.1	Photos	10
2.4	Endorsed Documents	12
2.5	Complaints	12
2.6	Compliance	13
2.6.1	Incidents	13
2.6.2	Non-compliance	13
2.6.3	Audits	13
2.7	Looking Forward – Core Focus Areas	13
3	Phase G - Eastern Tunnel Package	14
3.1	Key Construction Related Activities During the Period	14
3.2	Key Construction Activities Look Ahead	15
3.3	ER Inspections	15
3.3.1	Photos	16
3.4	Endorsed document/s	17
3.5	Complaints	17
3.6	Compliance	17
3.6.1	Incidents	17
3.6.2	Non-compliance	17
3.6.3	Audits	18



3.7	Looking Forward – Core Focus Areas	18
4	PHASE H - Westmead Utility Relocation	19
4.1	Key Construction Related Activities During the Period	19
4.1	Key Construction Activities Look Ahead.....	19
4.2	ER Inspections	19
4.2.1	Photos	19
4.3	Endorsed Document/s.....	20
4.4	Complaints	20
4.1	Compliance.....	20
4.1.1	Incidents.....	20
4.1.2	Non-compliance	20
4.1.3	Audits	20
4.2	Looking Forward – Core Focus Areas	20
5	Sydney Metro Retained Obligations and Other Activity	21
5.1	Key Construction Activities During the Period	21
5.2	Key Construction Activities Look Ahead.....	21
5.3	ER Inspections	21
5.3.1	Photos	21
5.4	Endorsed Document/s.....	21
5.5	Complaints	21
5.6	Compliance.....	21
5.6.1	Incidents.....	21
5.6.2	Non-compliance	21
5.6.3	Audits	21
6	Statement of Limitations.....	22
7	Appendix A – ER Document Endorsement Records (ETP only).....	23



1 PHASE B - CENTRAL TUNNELLING PACKAGE

The Environmental Representatives for Phase B of Sydney Metro West are:

- Michael Woolley
- Greg Byrnes
- Jo Robertson

Phase B – Central Tunnelling Package (CTP) is being delivered by Acciona Ferroviol Joint Venture (AFJV). Phase B of Sydney Metro West has been further broken into:

- Phase B1: Civil works
- Phase B2: Tunnelling works

The AFJV hold EPL 21610 for this Phase of works. Activities defined as Phase B2-Tunneling Works in the Staging Report for Metro West commenced during the November 2022 reporting period at Burwood North.

1.1 Key Construction Activities During the Period

The Bays

- Ongoing support activities for the two TBMs which traversed the Burwood North station box and recommenced tunnelling during the reporting period. These activities included delivery of segments, removal of the grout plant to Burwood North and operation of ventilation systems.
- Ongoing construction of cross passages between the two tunnels.
- Storage of spoil in the shed and load out of spoil on trucks.
- Ongoing operation of the Construction Water Treatment Plant; site office facilities; and works shops.

Five Dock

- West shaft: Ongoing support for TBM tunnelling for both TBMs. Northern access to be used for light vehicle parking. Ongoing use of the carparking by the public on Great North Road in front of the site.
- East Shaft: Deliveries and various works inside the acoustic shed. Tunnelling support activities including access for the tunnelling workforce as relevant. Ongoing excavation in the central cavern to achieve design. Load out of spoil and concrete by truck from the eastern shed.
- Ongoing use of a house on Waterview Street adjacent the eastern shaft for project offices.
- Water directed to the Bays WTP for treatment.

Burwood North

- Traverse of TBMs across the station box complete. Re-commencement of tunnelling of both TBMs.
- OOHWS relating to driveways and utilities in various areas around the site.
- Operation of plant for the TBM including grout plant; power supply; and segment storage. New harmonic sub installed. All water for treatment was being directed to the Bays. The Tasman tank has been converted to store potable water for the grout plant.
- South Shaft: Works complete. Area being used for light vehicle parking.

North Strathfield

- Ongoing FRP for plinths and the base of the station box. Installation of services. Completion of FRP for the lining of the Nozzles at each end of the station box. Removal of formwork for the lining of nozzles.



- Preparation for TBM arrival such as installation of conveyor supports.

Sydney Olympic Park

- Completion of FRP works to line the Nozzles. Concrete management at the surface.
- FRP for concrete footing for a tower crane to lift out the TBM on arrival.
- Removal of weighbridge and foundations.
- Project Office Operating.

1.2 Key Construction Activities Look Ahead

- Ongoing activities as described above.
- Various OOHWs (conducted under the EPL).
- Removal of steel decks and concrete columns at North Strathfield.
- Demobilisation activities at SOP.
- Potential construction of the tower crane at SOP.

1.3 ER Inspections

There were five ER inspections conducted on each Thursday during May. Sites were inspected on an alternating basis except at Burwood North which was inspected on a weekly basis given ongoing TBM activities. The following actions were raised:

The Bays:

- Clean out sediment in swale drain behind the workshop near the stormwater pit near the WTP at the Bays.

Five Dock:

- Ensure mitigation is provided to prevent dirt tracking outside the shed and/or clean up dirt tracked onto Second Av at Five Dock East.
- Ensure dust suppression or other controls are adequate to prevent dust exiting the shed doors at Five Dock East.

Burwood North:

- Cut the grass outside the Burwood North site on Burton Street and conduct any relevant maintenance.
- Provide secondary containment to chemicals on the hardstand area outside the shed at BN.

North Strathfield

- Nil

Sydney Olympic Park

- Re-instate ERSED controls and mulch in the vicinity of the stormwater pit at the city end of the station box.

AFJV have been responsive in closing out actions raised during inspections. AFJC have been providing regular noise monitoring reports outlining results of attended and unattended monitoring.



1.3.1 Photos



Figure 1 1 Works in the station box (The Bays).



Figure 1 2 TBM supports items visible in the Western Shaft (Five Dock).



Figure 1 3 Works in the Eastern Shaft (Five Dock).



Figure 1 4 Removal of concrete plinths after TBM traverse (Burwood North).



Figure 1 5 TBM 4 being prepared to re-commence tunnelling. (Burwood North).



Figure 1 6 Nozzle lining works in the Station Box (North Strathfield).

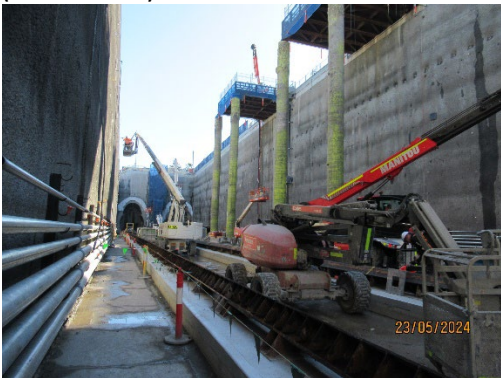
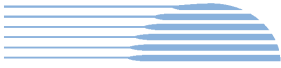


Figure 1.7 Works in the Nozzles (North Strathfield)



Figure 1.8 Preparation for concrete pour for the Nozzle (SOP).



1.4 Endorsed Document/s

The following Plans were approved or endorsed by the ER during the reporting period:

- Nil

1.5 Complaints

Based on the Sydney Metro Complaint Registers for May 2024, there were 13 complaints reported during the month, which compares with 3 complaints received during the previous month.

Five complaints related to noise and vibration from tunnelling of the TBM and excavation at cross passages. Two complaints related to property damage; two complaints related to truck driver behaviour and one complaint related to an offer of Alternative Accommodation.

Three complaints related to the Burwood North site, two of which were for OOHWs and one for potable water leaking from a tank.

1.6 Compliance

1.6.1 Incidents

No Incidents as defined in the Infrastructure Approval was reported by AFJV during the reporting period.

Various minor incidents were reported under the Sydney Metro reporting system including: a coolant spill at Burwood North inside the station box; and a chemical spill at Burwood North grout plant. Both spills were small in volume and contained on site.

1.6.2 Non-compliance and Potential Non Compliance

The following Non-Compliance Report was provided to the ER and DPHI during the reporting period:

- NCR 036 regarding deviation from an approved haulage route identified following impact of a heavy vehicle with a timber power pole (Condition D90e).

1.6.3 Audits

The fourth Independent Environmental Audit on the Sydney Metro West, Concept and Stage 1 SSI 10038 Approval was conducted in February and March 2024. The final report for the IEA was dated April 2024 and issued to the ER during the reporting period.

1.7 Looking Forward – Core Focus Areas

- Review of noise monitoring by AFJV to verify compliance with DNVIS predictions.
- Management of Ground Borne Noise from TBM operations and cross passage excavation.



2 PHASE F – WESTERN TUNNELLING PACKAGE

The Environmental Representatives for Phase F of Sydney Metro West are:

- Greg Byrnes
- Swathi Gowda
- Mike Woolley
- Maulik Bapodara

Phase F – Western Tunnelling Package (WTP) is being delivered by Gamuda Australia Laing O’Rourke Consortium (GLC).

GLC are constructing this Phase of Sydney metro West under EPL 21676.

2.1 Key Construction Activities During the Period

During May 2024, limited construction activities occurred at the WTP sites due to a safety review of all activities. The following activities were undertaken in a limited capacity at the Sydney Olympic Park (SOP), Westmead, Parramatta and the Clyde stabling and maintenance facility which includes the Rosehill, Clyde Dive and Clyde MSF construction sites:

SOP

- Tracks installed for TBM break through and load out
- Preparatory works for TBM break through underway

Westmead

- Station box base slab preparation works
- Station box trimming, bolting and shotcrete spraying
- Water Treatment Plant operation and discharging off site via the EPL discharge point.
- Road Header excavation of eastern cavern (24hrs/5days)
- Road header excavation of the tunnel stub and cross over cavern in the western end of the box (24hrs/5days)
- Removal of spoil from the Station Box, tunnel stub and cavern excavation via kibble and gantry crane inside the acoustic shed.
- Spoil stockpiling and load out from Acoustic shed

Parramatta

- Water Treatment Plant operation with discharge off site when required
- Eastern station box excavation is continuing and steel strut installation, rock hammer is now required
- Commissioning of construction bridge over the station box
- Spoil being loaded straight off site to various sites across Sydney and the Clyde MSF west
- The removal of the concrete pavement over the western end of the station box using concrete saw and hammer
- Excavation dewatering following rain events
- Archaeology investigations

Clyde Dive



- Horizontal tunnelling of arrival and departure tunnels with road header has been completed.
- Horizontal tunnelling with road Header between the shaft and dive excavation with Spoil transfer to MSF
- Clyde dive base slab and deflection wall concrete pours
- Hydro blasting in the dive during normal construction hours with respite every three hours was completed at the end of May

Rosehill

- TBM 1 and 2 continue to excavate tunnel with spoil being transferred to the spoil shed via conveyor
- Spoil load out from Spoil shed via truck
- Ongoing operations of grout plant
- Ongoing tunnel segment delivery and storage
- Water Treatment Plant operation and discharge off site via EPL.

Clyde MSF

- Unwin Street diversion works including over bridge and spoil abutment construction
- Rail bridge works, including piling, pylon and bridge deck construction over Duck and A'Becketts Creeks
- Duck Creek and A 'Becketts Creek low flow and high flow channel excavation and rock placement ongoing. This includes tie in to existing creeks
- Water main and utilities retaining wall foundation excavation and FRH
- Water main and utilities trenching adjacent to the M4 and along Duck Creek
- Spoil storage and Management from Parramatta and Clyde Dive including Acid Sulfate Soil treatment.
- Fill material placement

2.2 Key Construction Activities Look Ahead

The key construction activities planned for June 2024 are similar to those listed in Section 3.1 With the addition of the following:

- Design and construction of temporary crossing of A'Becketts Creek
- Unwin Street diversion traffic switch to new bridge
- Commence excavation of the western end of the Parramatta station box
- Piling and concrete works at the Clyde Dive site adjacent to the ATC stables for a utility protection slab
- TBM breakthrough at SOP late June or early July

2.3 ER Inspections

Four ER inspections were conducted in May 2024 (8/5/2024, 15/5/2024, 22/5/2024 and 29/05/2024). Currently, the sites are divided into two groups and visited fortnightly. The two groups are:

- Parramatta, Westmead and SOP
- Clyde Dive, Clyde MSF and Rosehill

In total of 114 mm (Parramatta BOM) of rain fell during May 2024, compared to a monthly average of 79.7mm. Heavy rainfall was recorded on the 5 and 11 May 2024, with 49.6mm and 20mm falling, respectively. The rainfall event caused minor flooding across the project, due to the number of open excavations, most of the water was able to be stored onsite. In total three actions were raised across the WTP in May 2024. Minimal work was completed due to safety review but the actions and key issues raised at the inspections were:

- **Rosehill** – The Rosehill site is being managed well with focus on tunnel excavation and spoil management. One action was raised during May for inadequate chemical storage.



- **Clyde MSF** - This site currently presents the highest environmental risk for GLC with sediment controls and spoil management being the key focus area for this site. One action was raised during May for an uncontrolled concrete spill. The creek diversion works are being closely monitored during the ER inspections.
- **Parramatta** – The Parramatta site is being managed well with no actions raised during May. The excavation of the station box and the removal the concrete pavement both using rock hammers presents an elevated noise and vibration risk for GLC and should be a key focus area for the contractor.
- **Westmead** – The Westmead site is being managed well with a focus on Station Box and tunnel excavation and spoil management. No actions were raised during May. The use of rock hammers to excavate the eastern end of the station box presents an elevated noise and vibration risk for GLC and should be a key focus area.
- **Clyde Dive** – This Clyde Dive site is being managed well with a focus on noise mitigation and erosion and sediment controls. One action was raised in May for inadequate maintenance of sediment controls.
- **SOP** – The SOP site is being managed well with no actions raised. Minimal work is occurring at SOP until the TBM breakthrough in late June.

2.3.1 Photos



Figure 2.1: Westmead Site –Hoarding with project information



Figure 2.2: Westmead site – Acoustic shed



Figure 2.3: Parramatta Site – eastern Station Box excavation

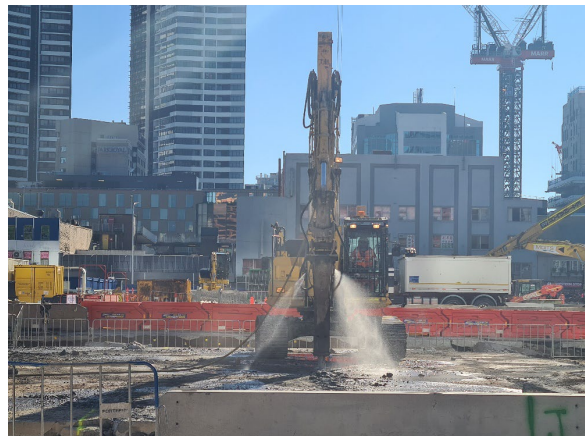


Figure 2.4: Parramatta site – western piling pad removal with dust suppression



Figure 2.5: Clyde Dive site – Rosehill Gardens public walkway through the site



Figure 2.6: Clyde Dive site – Dive base and deflection wall FRP



Figure 2.7: Rosehill Site – spoil shed



Figure 2.10: Rosehill Site – WTP operation



Figure 2.11: Clyde MSF Site – Cofferdam with minor erosion



Figure 2.12 – Clyde MSF Site – A'Becketts Creek dewatering



Figure 2.13: Clyde MSF Site – Utilities retaining wall FRP



Figure 2.14: Clyde MSF Site – Water main tie in works



Figure 2.15: SOP Site – station box dewatering sump



Figure 2.16: SOP Site – tunnel portal with TBM tracks

2.4 Endorsed Documents

The following documents were approved or endorsed by the ER during the reporting period:

- Sydney Metro West – Western Tunnelling Package: Noise and Vibration Monitoring Program (Revision G) endorsed on the 1 May 2024
- Sydney Metro West – Western Tunnelling Package: Surface Water Quality Monitoring Program (Rev E) endorsed on the 15 May 2024

2.5 Complaints

Five complaints were provided to the ER for May 2024, decrease from 10 the previous month. Following an investigation, one of the complaints was not related to the Sydney Metro project. The remaining complaints are summarised below:

- **Westmead** – Three complaints:
 - The (21/5/2024) complaint related to noise and vibration on the night of the 21 May 2024. GLC were not completing any street level works, however, they were completing tunnel works and station excavation within the Acoustic Shed, this involved using a road header operating at the western end of the station box. Vibration monitoring data from the address was reviewed and found to be below human comfort criteria. The ER will continue to monitor complaints from this resident.
 - The (27/5/2024) complaint was related to drilling noise. Tunnel works including the operating of road headers and rock hammers was taking place inside the Acoustic Shed. Following a review of



real time and attended noise and vibration monitoring data the levels were found to be below the relevant criteria. The ER will continue to monitor complaints from this resident

- The (31/5/2024) complaint was related to heavy vehicle driver behaviour at the intersection of Priddle Street and Hawkesbury Road, Westmead. The complainant could not provide date and times of the event. GLC propose to issue a toolbox notice to truck drivers regarding driving and pedestrian safety at the intersection of Priddle Street and Hawkesbury Road. The ER considers this complaint adequately addressed.
- **Western Tunnelling Package** – One complaint:
 - The (8/5/2024) complaint was related to property damage during survey prism installation. GLC to cover the cost of new ceiling panel and installation of panel. The ER considers this complaint adequately addressed.

2.6 Compliance

2.6.1 Incidents

No incidents considered to represent incidents as defined under the Project Approval were reported to or observed by the ER during the reporting period.

2.6.2 Non-compliance

No Non-Compliance Reports (NCR) were provided to the ER or raised by the ER during the reporting period.

2.6.3 Audits

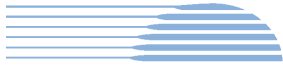
The fourth Independent Environmental Audit on the Sydney Metro West, Concept and Stage 1 SSI 10038 Approval commenced late February 2024, with the Audit Report issued on the 26 April 2024. No new non-compliances were identified for Phase F in the Audit report.

2.7 Looking Forward – Core Focus Areas

GLC are managing their environmental risk and compliance adequately. Currently, the Clyde MSF site presents the highest environmental risk due to its spoil management, creek works and multiple site access points.

The core focus areas for the coming month are:

- The diversion of Duck and A'Becketts Creek is continuing. This work involves creating a new low flow channel lined with rock and backfilling the original creek alignment to create the high flow channel. These works are influenced by rainfall events and require a high level of environmental management from GLC.
- The utilities protection slab on adjacent to the Rosehill Gardens Stables and the associated potential noise impacts



3 PHASE G - EASTERN TUNNEL PACKAGE

The Sydney Metro West Eastern Tunnel Package is Stage 2 of the Sydney Metro West CSSI and is described as major civil construction works between The Bays and Sydney CBD, including station excavation at Pyrmont and Hunter Street and tunnel excavation between the Bays and Hunter Street. Stage 2 (SSI 19238057) was approved on the 24 August 2022.

The Environmental Representatives for the Sydney Metro West Eastern Tunnel Package are:

- Michael Woolley
- Maulik Bapodara
- Greg Byrnes
- Jo Robertson

The Eastern Tunnelling Package (ETP) is being delivered by John Holland CPB Ghella Joint Venture (JCG) with the contract being awarded in November 2022. Sydney Metro notified DPHI that the date of commencement of construction was 17 March 2023. JCG have received Environmental Protection Licence (EPL 21784) for the project.

3.1 Key Construction Related Activities During the Period

Works conducted during the reporting period included:

Pyrmont East:

- Excavation of the temporary shaft using excavators with rock hammers and load out of spoil. Saw cutting of shaft faces. Clamshell excavators loading trucks from the steel platform, entering from Edward Street and existing to Pyrmont Bridge Road.
- Use of the diesel-powered tower crane including during OOHs to receive deliveries for the acoustic shed frame and cladding, water treatment plant and site sheds. ROLs are limited to later periods during Vivid, leading to works going further into the nighttime period than previously.
- Completion of the acoustic shed frame and commencement of cladding of southern and eastern walls. Installation and assembly of site sheds and water treatment plant.
- Operation of the ancillary facility in the parking lane on the south side of Union Street for site sheds.
- Management of water accumulated on site after rain events including pumping water to an intermediate tank and then use of sucker trucks parked outside the site to empty the tank.

Pyrmont West:

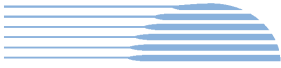
- Ongoing construction of the retaining walls along Pyrmont Bridge Road and Pyrmont Street.
- Load out of some spoil from piling activities.
- Piling 2 large piles for the steel deck using cranes and a piling rig. Pile construction included installation of reinforcement cage and concrete pours.
- Management of water accumulated on site after rain events including use of sucker trucks parked outside the site on Pyrmont Street.

Hunter Street West:

- Ongoing hard demolition of 5 and 9 Hunter Street and 300 George Street buildings. Waste delivered to load out zone through lift shafts.
- Ongoing use of the basement load out zone for loading trucks and removal of demolition wastes through driveway to Hunter Street.
- Ongoing investigations into the boundary wall between Skinners Hotel and 300 George Street and planning for demolition given need to minimise potential damage to the hotel.
- Removal of scaffolding as the buildings are demolished.
- Ongoing deliveries and pedestrian management along Hunter Street.

Hunter Street East:

- Activities inside the Bligh Street acoustic shed including ongoing excavation of the station cavern and various adits, turnback's, declines and ventilation shafts; stockpiling and load out of spoil. Construction of pillars. Use of air ventilation systems and other tunnelling support activities.



- Ongoing hard demolition of buildings on the site using multiple excavators with rock hammers and use of pulverisers where practicable.
- Ongoing use of the truck load out area at 28 O'Connell Street.
- Use of drop chute for removal of spoil to ground level and load out.

The Bays:

- Removal of the Tower Crane inside the station box using the crawler crane.
- Commencement of demobilisation of the crawler crane.
- Ongoing works within the station box to assemble the TBMs and prepare them for tunnelling.
- Water treatment using the temporary WTP and commissioning of the Construction WTP.
- Ongoing works on the slurry treatment plant and equipment that support its operation.
- General support activities such as in the workshops and site offices.

3.2 Key Construction Activities Look Ahead

The following works are planned in June 2024:

- Ongoing activities as described above.
- Utility investigations and relocations.
- Further site establishment works at all sites.
- Ongoing rock hammering at the Pyrmont shaft sites.
- Hard demolition to continue at Hunter Street sites using rock hammers and pulverisers, getting closer to ground levels.
- Ongoing commissioning of the TBMs and commencement of tunnelling at the Bays.
- Change of location for car and truck parking at the Bays.
- Ongoing OOHs delivery for the acoustic shed at Pyrmont East and potentially other works, subject to approvals.

3.3 ER Inspections

Four ER inspections were conducted during the reporting period. The following actions were raised during the month:

- Ensure the pump at the low point sump at the Bays is functioning to remove water from the area and remove build-up of runoff in the haul road.
- Instigate measures to reduce turbidity in run off waters directed to the low point sump and the WBPS drain.
- Ensure the IBC of waste oil, and any other chemical or fuel in the workshop area at the Bays is provided with secondary containment.
- JCG to review controls for spills and contamination of water at the workshop area with a view to separate runoff from the stormwater pit to prevent spills and contamination from the workshop entering the pit.
- Remove the coir log from under the concrete barrier at the low point sump at the Bays, to allow for water to enter the sump.
- Review ERSED controls at the swale to the WBPS at the Bays to better retain sediment.
- Ensure noise blankets are placed on scaffolding at Hunter Street so they are effective and large gaps are enclosed.

JCG were observed to be responsive to ER feedback during inspections. Some actions remained open at the end of the reporting period.



3.3.1 Photos



Figure 3.1 Pymont East: Ongoing installation of the acoustic shed.



Figure 3.2 Pymont East: Excavation of sandstone using rock hammers under steel deck



Figure 3.3 Pymont West: Piling works.



Figure 3.4 Pymont West: Piling pad completed for piling.



Figure 3.5 Hunter St East: Demolition works ongoing.

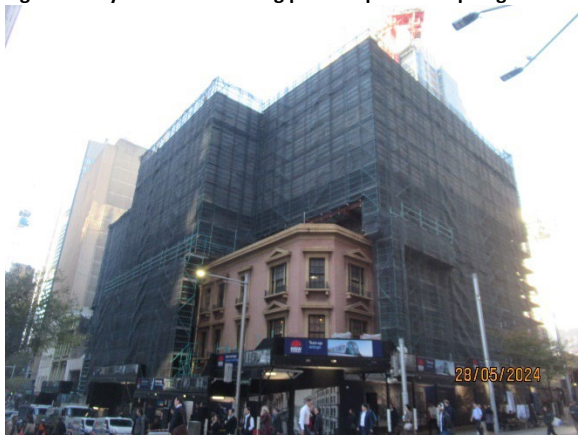


Figure 3.6 Hunter Street West: Demolition of buildings ongoing. Investigations to reduce impacts on Skinners Hotel ongoing.



Figure 3.7 The Bays: Assembly of the TBM in the station box



Figure 3.8 The Bays: Assembly of the Slurry Treatment Plant.

3.4 Endorsed document/s

Documents approved or endorsed during the reporting period comprised.

- Soil and Water Management Sub-Plan Rev 3 dated 22 April 2024 including the Surface Water Quality Monitoring Program (Rev 3 dated 22 April 2024) and the Groundwater Monitoring Program (Rev 4 dated 2 May 2024)

The documents were revised with the only amendment being an update to clarify that 6 Monthly Monitoring Reports will be issued within 40 business days of the end of the reporting period. In accordance with CoA A32(d)iii the written statements endorsing documents identified in A14, A21, C1, C5 and C14 are provided in Appendix A (if relevant).

3.5 Complaints

Nineteen complaints related to ETP were reported by Sydney Metro for May 2024 of which 15 related to the Pyrmont sites and 4 related to the Hunter Street sites.

Ten of the complaints at Pyrmont Street related to noise from OOHWs and three related to noise from works during standard hours. The complaints related to OOHWs coincided with an increase in OOHWs at Pyrmont East comprising deliveries for the acoustic shed, water treatment plant and site sheds, as well as ongoing assembly of the acoustic shed. One complaint related to noise from a pump operating OOHs. Works during standard hours mainly comprised ongoing excavation of the temporary shaft using rock hammers at Pyrmont East and piling works at Pyrmont West. One complaint related to dust from Pyrmont East and another related to respite offers for OOHWs.

The four complaints reported for Hunter Street related to noise and vibration during standard construction hours from the Hunter Street West site (1) and Hunter East site (2). One complaint related to water on the footpath outside the Hunter West site. The complaints related to demolition related activities.

3.6 Compliance

3.6.1 Incidents

No incidents considered to represent an Incident as defined under the Project Approval were reported to or observed by the ER during the reporting period. One incident was reported of sediment laden water leaking from a sucker truck and entering a stormwater pit at Pyrmont East. The EPA and DPHI were notified of the incident.

3.6.2 Non-compliance

No non-compliances were reported by JCG or Sydney Metro during the reporting period or observed by the ER.



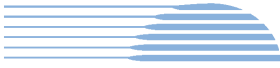
3.6.3 Audits

The second IEA final report dated April 2024 was issued to the ER during the reporting period.

3.7 Looking Forward – Core Focus Areas

In the next reporting period, the ER Team will be focused on:

- General monitoring of construction activities; including TBM tunnelling commencement at the Bays.
- Noise and dust associated with the ongoing hard demolition activities the Hunter Street sites.
- Noise associated with excavation of the temporary shaft and OOHWS at Pyrmont East.
- Potential for tracking of dirt at the various demolition sites and at the Bays.



4 PHASE H - WESTMEAD UTILITY RELOCATION

The Sydney Metro West Phase H – Westmead Utilities Relocation involves the installation of new utility services around the new Sydney Metro Station at Westmead via Hawkesbury, Bailey and Hassell Streets.

The Environmental Representatives for the Sydney Metro West Eastern Tunnel Package are:

- Greg Byrnes
- Michael Woolley
- Maulik Bapodara

The Sydney Metro West Phase H – Westmead Utilities Relocation is being delivered by Quickway with the contract being awarded in August 2023.

No EPL will be required for this phase of Sydney metro West.

4.1 Key Construction Related Activities During the Period

The majority of works undertaken in May were completed outside standard construction hours due to ROL requirements. Construction works included:

- Trenching and conduit install on Hawkesbury, Hassell and Alexandra, including traffic diversions outside standard construction hours
- Trenching and conduit install on Bailey Street during standard construction hours
- Curb and gutter reinstatement
- Silverwater Compound operation
- Traffic diversions

4.1 Key Construction Activities Look Ahead

The majority of trenching and conduit installation has been completed.

4.2 ER Inspections

One ER inspections was completed during the reporting period on the 22 May 2024. No actions or issues were raised.

4.2.1 Photos



Figure 4.1: Westmead Utility Works – Telstra Pit backfill and footpath reinstatement Cnr Hassell and Bailey Streets



Figure 4.2 Westmead Utility Works: Telstra Pit backfill and footpath reinstatement



4.3 Endorsed Document/s

The following documents were endorsed or approved by the ER during the reporting period:

- Sydney Metro West, Enabling Works Utility Relocations – Westmead OOHW-004 – Jemena Gas Disconnections Rev 2 15 May 2024

4.4 Complaints

No complaints were provided to the ER for May 2024 for the Westmead Utility Relocation Works. This is a decrease from three the previous month.

4.1 Compliance

4.1.1 Incidents

No incidents considered to represent Incidents as defined under the Project Approval were reported to or observed by the ER during the reporting period.

4.1.2 Non-compliance

No Non-Compliance Reports were provided to the ER during the reporting period.

4.1.3 Audits

The fourth Independent Environmental Audit on the Sydney Metro West, Concept and Stage 1 SSI 10038 Approval commenced late February 2024, with the Audit Report issued on the 26 April 2024. No new non-compliances were identified for Phase H in the Audit report.

4.2 Looking Forward – Core Focus Areas

The core focus areas for the coming month are:

- Work outside standard construction hours



5 SYDNEY METRO RETAINED OBLIGATIONS AND OTHER ACTIVITY

The Environmental Representatives for the Sydney Metro Retained Obligations and other Activities are:

- Jo Robertson
- Greg Byrnes

The Sydney Metro Retained Obligations and other Activities is being delivered by Sydney Metro with various sub-contractors delivering the works. These works do not require an EPL.

5.1 Key Construction Activities During the Period

The ER is not aware for other Sydney Metro managed construction activities during the period.

5.2 Key Construction Activities Look Ahead

The ER is not aware for other Sydney Metro managed construction activities during the period.

5.3 ER Inspections

There were no ER inspections of this work during the reporting period.

5.3.1 Photos

None

5.4 Endorsed Document/s

No Sydney Metro documents were endorsed during the reporting period.

5.5 Complaints

No complaints have been reported to the ER in relation to the investigations previously conducted for Sydney Metro.

5.6 Compliance

5.6.1 Incidents

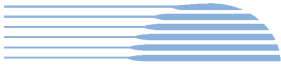
No incidents have been reported to the ER in relation to the investigations previously conducted for Sydney Metro.

5.6.2 Non-compliance

No non compliances have been reported to the ER in relation to the investigations previously conducted for Sydney Metro.

5.6.3 Audits

No audits were conducted during the reporting period on this package or works.



6 STATEMENT OF LIMITATIONS

Healthy Buildings International (HBI) has prepared this report in accordance with the requirements of Condition A30(k) of the Sydney Metro West, Concept and Stage 1 SSI 10038 Approval (11 March 2021), and Condition A32(k) of the Sydney Metro West – The Bays to Sydney CBD SSI 19238057 Approval (24 August 2022).

The report is for the sole purposes of Department of Planning, Housing and Infrastructure (DPHI) and Sydney Metro. It has been prepared based on generally accepted practices and standards at the time it was prepared. No other warranty, expressed or implied, is made as to the professional advice included in this Report. This report did not assess any aspects relating to safety.

Where the Report indicates that information has been provided to HBI by third parties, HBI assumes no liability for any inaccuracies in or omissions to that information.

This Report was prepared based on the conditions encountered and information reviewed at this time. HBI disclaims responsibility for any changes that may have occurred after this time.

This Report should be read in full. No responsibility is accepted for use of any part of this report in any other context or for any other purpose or by third parties. This Report does not purport to give legal advice. Legal advice can only be given by qualified legal practitioners.

Except as required by law, no third party may use or rely on this Report unless otherwise agreed by HBI in writing. Except as specifically stated in this section, HBI does not authorise the use or findings of this Report by any third party

To the extent permitted by law, HBI expressly disclaims and excludes liability for any loss, damage, cost or expenses suffered by any third party relating to or resulting from the use of, or reliance on, any information contained in this Report. HBI does not admit that any action, liability or claim may exist or be available to any third party.



HBI Healthy Buildings International Pty Ltd

7 APPENDIX A – ER DOCUMENT ENDORSEMENT RECORDS (ETP ONLY)

Mr Ben Armstrong
Director Sustainability, Environment and Planning
Metro West
Sydney Metro
Transport for NSW
PO Box K659
HAYMARKET NSW 1240

7 May 2024

REF: 201208 (G) SWMP_Rev 3

Dear Ben

RE: Sydney Metro West Stage 2 – Eastern Tunnelling Package: Soil and Water Management Sub-Plan (Rev 3)

I refer to Sydney Metro's (SM) submission of the following document required by Condition C1 and C5 of the Sydney Metro West – The Bays to Sydney CBD Approval (SSI 19238057) which was approved by the Department of Planning and Environment (DPE) on 24 August 2022:

- Sydney Metro West, Eastern Tunnelling Package Soil and Water Management Sub-Plan Rev 3 dated 22 April 2024 (SMWSTETP-JCG-SWD-SW000-EM-PLN-002014).

It is noted that:

- Rev 0 of the Soil and Water Management Sub Plan (SWMP) which included the Surface Water Quality Monitoring Program and Groundwater Monitoring Program were prepared by John Holland CPB Ghella JV (JCG) to address the requirements of Condition C1, C5(e), C13, C14(b), C14(c), C15 and C17 of the Infrastructure Approval. The document was approved by the ER on 24 March 2023.
- Rev 2 of the SWMP was approved by the ER as a minor amendment on 11 December 2023.
- A revised Plan (Rev 3 dated 22 April) was issued, with the only amendment being an update to clarify that 6 Monthly Monitoring Reports will be issued within 40 business days of the end of the reporting period. This is consistent with other Sydney Metro West contracts. Both Monitoring Programs were also updated as part of the review to reflect this change.
- Sydney Metro has completed a review of the changes and does not have any comments on this change.

Following the above, the amendments made in Rev 3 of the document and in the Surface Water Quality Monitoring Program (Rev 3 dated 22 April 2024) and the Groundwater Monitoring Program (Rev 4 dated 2 May 2024) are considered to remain consistent with the Conditions of Approval (SSI 19238057) in relation to the Soil and Water Management Sub-Plan and Monitoring Programs.

As the approved Environmental Representative for the Sydney Metro West and as required by Condition A32(j), on the basis of the above, the Soil and Water Management Sub-Plan (Revision 3) which includes the Surface Water Quality Monitoring Program and the Groundwater Monitoring Program, is approved.

Yours sincerely

Michael Woolley
Michael Woolley

Environmental Representative – Sydney Metro West – Eastern Tunnelling Package
CC: Ari Stypel and Matthew Marrinan.