

Mr Rob Sherry
Team Leader Compliance – Government Projects
Department of Planning, Housing and Infrastructure
Locked Bag 5022
PARRAMATTA NSW 2124

7 August 2024

Ref:201208-ER_DPHI-July 2024

Dear Rob

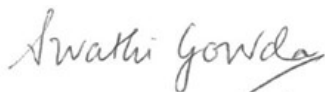
RE: Sydney Metro - Sydney Metro West SSI - ER Monthly Report for July 2024

Healthy Buildings International (HBI) submits this report to the Secretary in accordance with:

- Condition A30 (k) of the Sydney Metro West, Concept and Stage 1 SSI 10038 Approval (11 March 2021), and associated modifications (MOD 1 - 28 July 2021, MOD 2 - 3 June 2022, MOD3 – 4 July 2022, MOD 4 - 23 December 2022 and MOD 5 – 20 September 2023); and
- Condition A32(k) of the Sydney Metro West – The Bays to Sydney CBD SSI 19238057 Approval (24 August 2022).

The attached summary details the key activities undertaken by Environmental Representatives for Sydney Metro – Sydney Metro West for the month of July 2024.

Yours sincerely



Swathi Gowda
Environmental Representative

Cc:

DPHI: Major Projects Portal

Sydney Metro: Matthew Marrinan, John Ieroklis, Andrew Hendy, Cath Snelgrove, Ari Stypel, Ben Armstrong, Sarah Kemp, Syed Shah, Valerie Lebon

Contractors: Jared Lipton (AFJV), Steph Mifsud (GLC), Sally Reynolds (JCG), Tom St Vincent Welch (Quickway)



Table of Contents

1	Phase B - Central Tunnelling Package	4
1.1	Key Construction Activities During the Period	4
1.2	Key Construction Activities Look Ahead	5
1.3	ER Inspections	5
1.3.1	Photos	6
1.4	Endorsed Document/s	7
1.5	Complaints	7
1.6	Compliance	7
1.6.1	Incidents	7
1.6.2	Non-compliance and Potential Non Compliance	7
1.6.3	Audits	7
1.7	Looking Forward – Core Focus Areas	7
2	Phase F – Western Tunnelling Package	8
2.1	Key Construction Activities During the Period	8
2.2	Key Construction Activities Look Ahead	10
2.3	ER Inspections	10
2.3.1	Photos	11
2.4	Endorsed Documents	14
2.5	Complaints	14
2.6	Compliance	14
2.6.1	Incidents	14
2.6.2	Non-compliance	15
2.6.3	Audits	15
2.7	Looking Forward – Core Focus Areas	15
3	Phase G - Eastern Tunnel Package	16
3.1	Key Construction Related Activities During the Period	16
3.2	Key Construction Activities Look Ahead	17
3.3	ER Inspections	17
3.3.1	Photos	18
3.4	Endorsed document/s	19
3.5	Complaints	19
3.6	Compliance	19
3.6.1	Incidents	19
3.6.2	Non-compliance	20
3.6.3	Audits	20



3.7	Looking Forward – Core Focus Areas	20
4	PHASE H - Westmead Utility Relocation	21
4.1	Key Construction Related Activities During the Period	21
4.1	Key Construction Activities Look Ahead.....	21
4.2	ER Inspections	21
4.2.1	Photos	21
4.3	Endorsed Document/s.....	21
4.4	Complaints	21
4.1	Compliance.....	21
4.1.1	Incidents.....	21
4.1.2	Non-compliance	21
4.1.3	Audits	22
4.2	Looking Forward – Core Focus Areas	22
5	Sydney Metro Retained Obligations and Other Activity	23
5.1	Key Construction Activities During the Period	23
5.2	Key Construction Activities Look Ahead.....	23
5.3	ER Inspections	23
5.3.1	Photos	23
5.4	Endorsed Document/s.....	23
5.5	Complaints	23
5.6	Compliance.....	23
5.6.1	Incidents.....	23
5.6.2	Non-compliance	23
5.6.3	Audits	23
6	Statement of Limitations.....	24
7	Appendix A – ER Document Endorsement Records (ETP only).....	25



1 PHASE B - CENTRAL TUNNELLING PACKAGE

The Environmental Representatives for Phase B of Sydney Metro West are:

- Michael Woolley
- Swathi Gowda
- Jo Robertson

Phase B – Central Tunnelling Package (CTP) is being delivered by Acciona Ferroviol Joint Venture (AFJV). Phase B of Sydney Metro West has been further broken into:

- Phase B1: Civil works
- Phase B2: Tunnelling works

The AFJV hold EPL 21610 for this Phase of works. Activities defined as Phase B2-Tunneling Works in the Staging Report for Metro West commenced during the November 2022 reporting period at Burwood North.

1.1 Key Construction Activities During the Period

The Bays

- Ongoing support activities for the two TBMs that arrived and traversed North Strathfield station box. These activities included delivery and storage of segments, spoil storage and load out and operation of ventilation systems.
- Ongoing construction of cross passages between the two tunnels.
- Ongoing use of site office facilities; and works shops.
- Operation of the Water Treatment Plant.
- Use of the new staff carparking area in the Ports area.

Five Dock

- West shaft: Ongoing support for TBM tunnelling for both TBMs. Ongoing use of the carparking by the public on Great North Road in front of the site.
- East Shaft: Deliveries and various works inside the acoustic shed. Tunnelling support activities including access for the tunnelling workforce as relevant. Ongoing excavation and concrete works for the invert of the central cavern with spoil load out to the Bays by conveyor and off site by truck.
- Ongoing use of a house on Waterview Street adjacent the eastern shaft for project offices.
- Water directed to the Bays WTP for treatment.

Burwood North

- OOHs relating to driveways and utilities in various areas around the site.
- Operation of supporting plant for the TBM including the grout plant with frequent cement deliveries, power supply, and segment delivery and storage. New harmonic sub operating. All water for treatment was being directed to the Bays. The Tasman tank continues to store potable water for the grout plant. Tunnelling personnel are largely based at BN.
- Concrete works in the cross over cavern for the Plenum.
- OOHs trial and ongoing use of the drop chutes for concrete delivery.
- Storage of cross passage spoil and general concrete wastes in the station box and load out of spoil using a crane to load trucks.
- South Shaft: Works complete. Area being used for light vehicle parking.



North Strathfield

- TBM arrival and traverse of the Station Box for both TBMs.
- Recommencement of TBM tunnelling.
- Pumping of water from the station box to the Bays for treatment and discharge.

Sydney Olympic Park

- Works at the eastern end of the station box at the surface to form hardstand for handover.
- Demobilisation of the water treatment plant and removal off site. Water in the station box is now managed by the WTP Contractor.
- Reconfiguring surface water to be directed to stormwater instead of the water treatment plant.
- Various deliveries to the station box and laydown of materials at the surface.
- Project Office Operating.

1.2 Key Construction Activities Look Ahead

- Ongoing activities as described above.
- TBM tunnelling towards SOP.
- Various OOHWs (conducted under the EPL).
- Ongoing demobilisation activities at SOP.

1.3 ER Inspections

There were four ER inspections conducted on each Thursday during July. Sites were inspected on an alternating basis. The following actions were raised:

The Bays:

- Gate 9 – laydown area - spill kit to be made accessible.
- Castor oil plant to be removed and disposed of appropriately.

Five Dock:

- Nil.

Burwood North:

- AFJV to investigate the source of dust at the grout plant at BN and minimise or prevent dust being generated in this area.
- Request for noise monitoring data

North Strathfield and Sydney Olympic Park

- AFJV to clean hardstand in the area to the country end of the station box at NS. AFJV to confirm if the pit in the area drains to stormwater or is a blind pit.

AFJV have been responsive in closing out actions raised during inspections. AFJV have been providing regular noise monitoring reports outlining results of attended and unattended monitoring.



1.3.1 Photos



Figure 1.1 Lower volumes of spoil stockpiled in the spoil shed (The Bays).



Figure 1.2 FRP for the invert of the Central Cavern (Five Dock).



Figure 1.3 Removal of B Class hoarding from East Street (Five Dock).



Figure 1.4 Use of concrete drop chutes (Burwood North).



Figure 1.5 Plenum works in the cross over cavern (Burwood North).

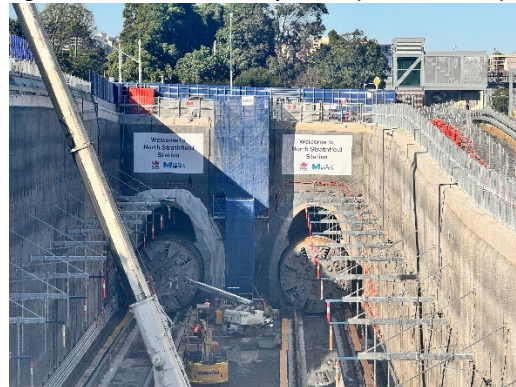


Figure 1.6 TBM arrival and traverse (North Strathfield).

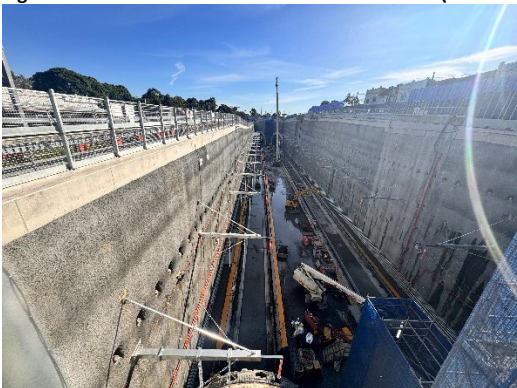
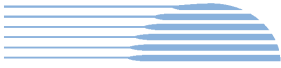


Figure 1.7 TBMs to commence traverse in the Station Box (North Strathfield).



Figure 1.8 Stormwater works to redirect surface water to stormwater (SOP).



1.4 Endorsed Document/s

The following Plans were approved or endorsed by the ER during the reporting period:

- Nil.

1.5 Complaints

Based on the Sydney Metro Complaint Registers for July 2024, there were 4 complaints reported during the month, which compares with 8 complaints received during the previous month and 13 for May.

There complaints were related to the Five Dock site. One of these was for dust; one for noise of the street sweeper employed to remove dirt and related dust from roads; and a third complaint was in relation to property damage.

No complaints were related to noise and vibration from tunnelling with the TBM stationary at North Strathfield for much of July. Tunnelling depths were shallower towards North Strathfield and will continue to get shallower once tunnelling re-commences.

1.6 Compliance

1.6.1 Incidents

No Incidents as defined in the Infrastructure Approval were reported by AFJV during the reporting period.

No incidents were reported under the Sydney Metro reporting system during the reporting period.

1.6.2 Non-compliance and Potential Non Compliance

The following Non-Compliance Report was provided to the ER and DPHI during the reporting period:

- NCR 038 Relating to worker parking not being in accordance with the CPAS. The item was notified to the project from a complaint report.

1.6.3 Audits

The fourth Independent Environmental Audit on the Sydney Metro West, Concept and Stage 1 SSI 10038 Approval was conducted in February and March 2024. The final report for the IEA was dated April 2024 and issued to the ER during the May reporting period. The next IEA is scheduled for August 2024.

1.7 Looking Forward – Core Focus Areas

- Review of noise monitoring by AFJV to verify compliance with DNVIS predictions.
- Management of Ground Borne Noise from TBM operations and cross passage excavation.
- Traverse of the TBM at North Strathfield and re-commencement of tunnelling.



2 PHASE F – WESTERN TUNNELLING PACKAGE

The Environmental Representatives for Phase F of Sydney Metro West are:

- Swathi Gowda
- Mike Woolley
- Maulik Bapodara

Phase F – Western Tunnelling Package (WTP) is being delivered by Gamuda Australia Laing O’Rourke Consortium (GLC).

GLC are constructing this Phase of Sydney metro West under EPL 21676.

2.1 Key Construction Activities During the Period

During July 2024, construction activities continued at all WTP sites. The following activities were being undertaken at the Sydney Olympic Park (SOP), Westmead, Parramatta and the Clyde stabling and maintenance facility which includes the Rosehill, Clyde Dive and Clyde MSF construction sites:

SOP

- 24/7 TBM 1 disassembly and retrieval commenced 27/06/2024 (under EPL).
 - TBM 1 – 24/7 works ongoing, with last gantry lifted out from station box on 24/07. Works for TBM 1 retrieval now mostly surface based while the gripper shield and front shield are disassembled for transport.
- Water management agreement with AHJV in place from 10/07/2024, with CTP station box surface water being directed to the Rosehill WTP.

Westmead

- Dozer operation (ripping) in eastern crossover caverns/tunnels to complete invert excavation.
- Trimming/hammering ongoing during the day only at the eastern end of the station box and tunnels.
- Road-header operation in western stub tunnels continuing.
- Nozzle formwork deliveries and assembly in base of station box.
- Spoil stockpiling and load out from Acoustic shed.
- Water Treatment Plant (WTP) is operating.

Parramatta

- Eastern station box excavation continuing (currently at ≈20m depth).
- First level struts and walers installed in 2nd half of the eastern station box at ≈7m depth .
- Alluvium removal completed to base of struts/walers install ≈7m depth.
- Nozzle construction commenced in eastern station box - canopy tube installation and fissure grouting ongoing. Night works re-commenced on 25/06/24 and are ongoing.
- Archaeology underway in Zone 7 (northern portion of the site near George Street) and Zone 7A(2) by GML.
- Western capping beam pour completed.
- Western crane pad slab poured.
- Spoil load out.
- Water Treatment Plant (WTP) is operating and discharging as necessary



Rosehill

- TBM 1 broke through on 26/06/2024 and is being disassembled at SOP and returned to Rosehill; delivery of accessories from 15/07/2024 to Rosehill.
- TBM 2 continues to excavate tunnel with spoil being transferred to the spoil shed via conveyor.
- Cross passage works are ongoing.
- Ongoing operations of grout plant.
- Water Treatment Plant operation including off site discharge is ongoing.
- Spoil load out and associated truck movements (reduced due to only one TBM operating and use of internal haul road).
- Crane assembly underway.
- DSI works.

Clyde Dive

- Lining Erection Machine (LEM) lifted into Dive, with assembly ongoing.
- Segments being unloaded and preparatory works for dive grouting activity underway.
- Cavern lining and minor hammering ongoing for benching out.
- Spoil load out.
- Clyde dive base slab excavation and concreting works progressing.
- Clyde dive deflection wall FRP works.
- Tower crane operation
- HV Protection Slab – service location works ongoing (standard hours only)

Clyde MSF

MSF West

- Unwin Street - Southern diversion works completed.
- Unwin Street – Northern diversion construction works continuing including over bridge install, abutment and retaining walls.
- Duck Creek and A 'Becketts Creek over bridge construction.
- Duck Creek and A 'Becketts Creek high and low flow channel construction.
- Confluence area of A 'Becketts Creek and Duck Creek embankment works commenced.
- Ground improvement works ongoing (piling).
- Stockpiling and retaining wall works ongoing.
- Internal haul road between Rosehill and MSF East constructed and commenced operation.
- Internal haul road and temporary creek crossing (A'Becketts Creek) completed and operational.
- Staged demolition of Kay Street Bridge (eastern section) commenced on 31/07.

MSF East

- Retaining walls – backfilling, FRP and anchor block works ongoing.
- Sydney Water Main commissioning works (pressure test of Water Main #1 completed; works on hold currently).
- Dewatering of work areas ongoing – with dirty water being transferred to Rosehill WTP.



2.2 Key Construction Activities Look Ahead

The key construction activities planned for August 2024 are similar to those listed in Section 3.1, with the addition of the following:

- Various OOHW (conducted under EPL).
- HV Protection Slab works (following investigation works, piling and concreting works) at the Clyde Dive site adjacent to the ATC stables.
- SOP - TBM disassembly and transfer to Rosehill during OOHW due to ROL restrictions.
- SOP - cross passage works to commence, with spoil from cross passages brought to the SOP station box for stockpiling and load out to surface. Spoil haulage off-site to occur during daytime hours.
- Clyde MSF West - Delivery and installation of bridge girders for the Unwin Street realignment.
- Clyde MSF West - Staged demolition of Kay Street Bridge.

2.3 ER Inspections

Five ER inspections were conducted in July 2024 (3/7/2024, 10/7/2024, 17/7/2024, 29/7/2024 and 31/07/2024). Currently, the sites are divided into two groups and visited typically fortnightly. The two groups are:

- Parramatta, Westmead and SOP
- Clyde Dive, Clyde MSF and Rosehill

In total of 358.5 mm (Parramatta BOM) of rain fell during July 2024, with highest rainfall recorded on 25 July 2024, of 15.5 mm. No issues were identified in relation to water management on-site during the ER inspections in the reporting period.

Seven actions were raised across the WTP in July 2024 and some opportunities for improvement identified. The actions and key issues raised at the inspections were:

- **Rosehill** – The Rosehill site is being managed well with the main activity being tunnel excavation and spoil management (GLC reports a reduction in truck movements due to 1 TBM operating and internal haul road, which is now operational). Two actions were raised during July regarding inadequate chemical storage and tidy-up of sludge/some material build-up near skip (adjacent to the WTP) and shed in order to maintain the hardstand area.
- **Clyde Dive** – This Clyde Dive site is being managed well with a focus on noise mitigation and erosion and sediment controls. Two actions raised in July relating to concrete washout controls/management (including area in Clyde MSF West Zone 4) and removal of sediment build-up near site sheds to minimise load on controls at the site gate.
- **Clyde MSF** - This site currently presents the highest environmental risk for GLC with sediment controls and spoil management being the key focus area for this site. Improved short-term and longer term-solutions have been implemented or are progressively being by GLC to address mud tracking previously raised as an issue in June . An internal haul road between Rosehill and MSF West has been constructed and is operational (minimises trucks/potential for tracking on public roads around the site). One action raised relating to newly established site access ramp near Stormwater drain (controls installed) to be rectified.
- **Parramatta** – The Parramatta site is being managed well. The excavation of the station box and the removal the concrete pavement, both using rock hammers presents an elevated noise and vibration risk for GLC and should be a key focus area for the Contractor. One action raised regarding rips/holes observed on spoil truck prior to exiting the site and was addressed promptly by GLC during the ER Inspection with truck unloaded is before leaving site for repairs.
- **Westmead** – The Westmead site is being managed well with the main activity being the Station Box and tunnel excavation and spoil management. The use of rock hammers (during standard hours) to excavate the eastern end of the station box presents an elevated noise and vibration risk for GLC and should be a key focus area. The ER and AA were provided with noise and vibration monitoring data for this activity (as per previous



request) for review during the reporting period. One action was raised during July for GLC to investigate and address with driver/hauler based on investigation outcomes for truck observed to be parked on Park Parade/Alexandra Avenue in a non-staged area at Westmead (awaiting entry to site for spoil loading and later confirmed was parked for three minutes) at the time of the ER Inspection. GLC investigated and promptly addressed action raised/investigation outcomes.

- **SOP** – TBM disassembly/retrieval and transfer to Rosehill has been a focus area for the team during July and the coming months (until September 2024). The SOP site was only inspected on 29 July during this reporting period, with no actions raised and management of complaints related to above works discussed – refer Complaint Section for further details.

2.3.1 Photos

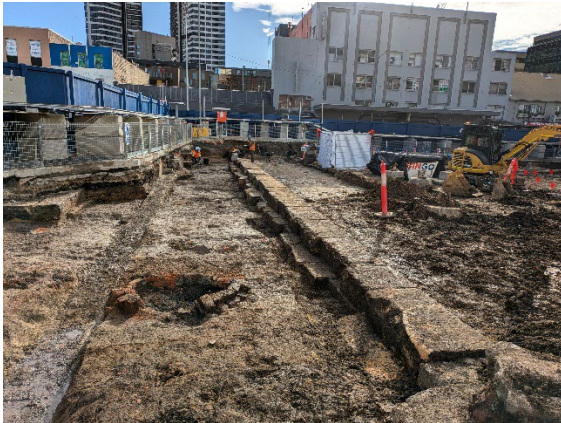


Figure 2.1: Parramatta Site: Archaeology in Zone 7 – footings of former Theatre and well.

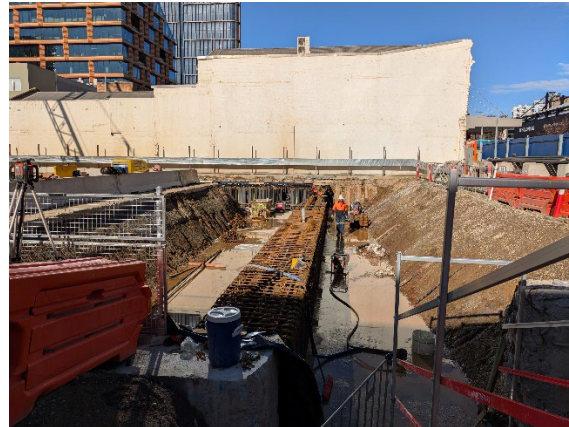


Figure 2.2: Parramatta Site: FRP works commenced for western capping beam.

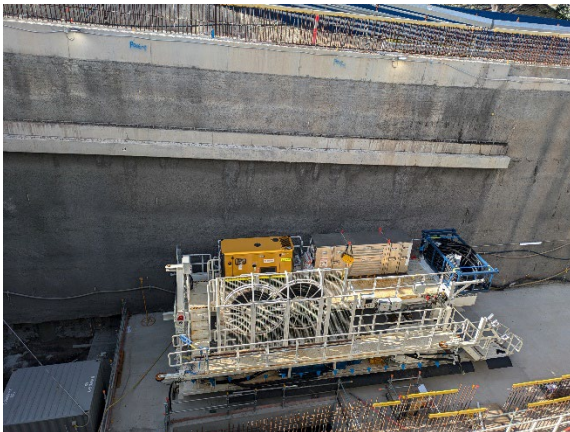


Figure 2.3: Clyde Dive: LEM in Dive with assembly ongoing.



Figure 2.4: Clyde Site: Area set-up with geofabric lining for waste from HV Protection Slab investigation works.



Figure 2.5: Westmead Site: Spoil loading operations within acoustic shed.



Figure 2.6: Westmead Site: Appropriate Chemical Storage -WTP.



Figure 2.7: Rosehill Site: RH Gate 2 – evidence of sweeper mobilised and site egress maintained (no tracking).



Figure 2.8: Rosehill Site: WTP operation.



Figure 2.9: Clyde MSF West: Internal haul road completed and operational.



Figure 2.10: Clyde MSF West: Temporary creek crossing completed and operational.



Figure 2.11: Clyde MSF West: Area 1 Swale Drain improvement works commenced.



Figure 2.12: Clyde MSF East: North anchor block tie-in works; GLC Report Sydney Water Main works on hold.



Figure 2.13: Clyde MSF West Site: Wheel wash and water cart with operator observed to manage tracking.



Figure 2.14: Clyde: Kay Street Bridge Demolition - controls noted (e.g. water mister, geofabric installed along ATF).



Figure 2.15: Clyde MSF East: Internal haul road works commenced.

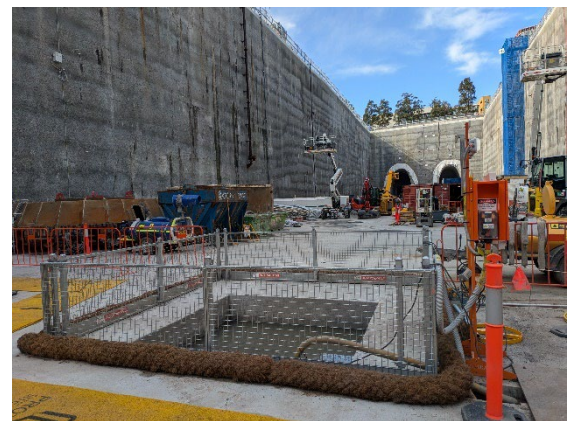
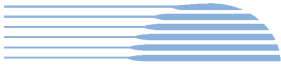


Figure 2.16: SOP Station Box: Tank and sump with controls for Surface Water Management.



2.4 Endorsed Documents

The following documents were approved or endorsed by the ER during the reporting period:

- Noise and Vibration Monitoring Program Rev G
- Surface Water Quality Monitoring Program Rev E

Other plans reviewed in reporting period include WTP CEMP and FFMP. WTP Groundwater Monitoring Program is currently under review and consideration if it constitutes a minor amendment.

2.5 Complaints

14 complaints were provided to the ER for July 2024, an increase from seven the previous month. Following an investigation, one complaint (Clyde MSF – OOH Noise) was not related to the Sydney Metro project. The remaining complaints are summarised below:

- **SOP – Eight Complaints:**
 - Eight complaints (July 2024) from the same complainant on Figtree Dive, SOP and related to noise (OOHW). GLC has responded to complaints appropriately, with unattended and attended monitoring completed at complainant's building address, as offers to conduct monitoring at complainant's residence was declined.
 - Attended monitoring was undertaken at the complainant's apartment on 25/07 once accepted by complainant, with monitoring records provided to ER and AA for review (results were compliant).
 - No other complaints from receivers in the SOP area related to GLC works.
- **Westmead – Three complaints:**
 - Two complaints (12/7/2024 and 19/7/2024) were from the same receiver (new complainant) on Bailey Street and related to noise (Standard Hours).
 - One complaint (8/7/2024) related to noise (standard hours) from receiver on Hassall Street. For above complaints, GLC were not completing any street level works, however, they were completing tunnelling works. GLC provided ER and AA monitoring records for review, as requested (results were compliant).
- **Parramatta – Two complaints:**
 - One complaint (4/7/2024) related to worker parking (no Project identifiable vehicles were noted during complaint response and investigation).
 - One complaint (1/7/2024) related to trailer associated with truck parked for an extended period in Seven Hills (investigation determined truck and trailer had last worked on the project on 12/06 at Parramatta).

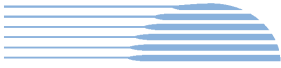
GLC response to complaints was considered appropriate for reporting period including provision of monitoring records to ER and AA for review, as requested.

2.6 Compliance

2.6.1 Incidents

No incidents considered to represent incidents as defined under the Project Approval were reported to or observed by the ER during the reporting period.

Two Class 3 incidents related to minor hydraulic oil spills (17/07 and 22/07) were reported under GLC reporting system during the reporting period.



2.6.2 Non-compliance

Nil Non-Compliance Reports (NCR) were provided to the ER or raised by the ER during the reporting period.

2.6.3 Audits

No audits were conducted in July 2024. The next IEA is scheduled for August 2024.

2.7 Looking Forward – Core Focus Areas

GLC are managing their environmental risk and compliance adequately. Currently, the Clyde MSF site presents the highest environmental risk due to its spoil management, creek works and multiple site access points.

The core focus areas for the coming month are:

- The diversion of Duck and A'Becketts Creek is continuing, and confluence works have commenced. The works involve creating a new low flow channel lined with rock and backfilling the original creek alignment to create the high flow channel. These works are influenced by rainfall events and require a high level of environmental management from GLC.
- The utilities protection slab on adjacent to the Rosehill Gardens Stables and the associated potential noise impacts.
- The dismantling of the TMB at SOP and the transport of the segments to Rosehill during night hours presents a traffic and noise risk for the project



3 PHASE G - EASTERN TUNNEL PACKAGE

The Sydney Metro West Eastern Tunnel Package is Stage 2 of the Sydney Metro West CSSI and is described as major civil construction works between The Bays and Sydney CBD, including station excavation at Pyrmont and Hunter Street and tunnel excavation between the Bays and Hunter Street. Stage 2 (SSI 19238057) was approved on the 24 August 2022.

The Environmental Representatives for the Sydney Metro West Eastern Tunnel Package are:

- Michael Woolley
- Maulik Bapodara
- Swathi Gowda
- Jo Robertson

The Eastern Tunnelling Package (ETP) is being delivered by John Holland CPB Ghella Joint Venture (JCG) with the contract being awarded in November 2022. Sydney Metro notified DPHI that the date of commencement of construction was 17 March 2023. JCG have received Environmental Protection Licence (EPL 21784) for the project.

3.1 Key Construction Related Activities During the Period

Works conducted during the reporting period included:

Pyrmont East:

- Completion of the excavation of the temporary shaft.
- Commencement of tunnelling (24/7) by road header after delivery and assembly of the road header to site.
- Installation of a ventilation system including scrubber unit located at the surface under the acoustic shed, venting to the east of the base of the shed.
- Use of the diesel-powered tower crane.
- Ongoing cladding of the walls and roof of the acoustic shed, mostly complete. Use of site sheds and ongoing assembly.
- Operation of the ancillary facility in the parking lane on the south side of Union Street for site sheds.
- Management of water accumulated on site after rain events including pumping water to an intermediate tank and then use of sucker trucks parked outside the site to empty the tank. Commencement of treatment and discharge at the water treatment plant by the end of the month.
- Excavation by rock hammer a section of the shaft outside the temporary shaft to the east of the acoustic shed.

Pyrmont West:

- Excavation of the ramp from Pyrmont Bridge Road and take spoil off site or stockpile on site.
- Ongoing construction of the steel deck.
- Management of water accumulated on site after rain events including use of sucker trucks parked outside the site on Pyrmont Street.

Hunter Street West:

- Ongoing hard demolition of 5 and 9 Hunter Street and 300 George Street buildings. Waste delivered to load out zone through lift shafts. Delay in some demolition works close to Skinners Hotel while support options are assessed and implemented.
- Ongoing use of the basement load out zone for loading trucks and removal of demolition wastes through driveway to Hunter Street.
- Removal of scaffolding as the buildings are demolished.
- Ongoing deliveries and pedestrian management along Hunter Street.
- Contamination sampling completed in some areas.



Hunter Street East:

- Activities inside the Blich Street acoustic shed including ongoing excavation of the station cavern and various adits, turnback's, declines and ventilation shafts; stockpiling and load out of spoil. Construction of pillars. Use of air ventilation systems and other tunnelling support activities.
- Ongoing hard demolition of buildings on the site using multiple excavators with rock hammers and use of pulverisers where practicable. Electric tower crane in use during demolition works. Demolition getting closer to ground level for some buildings.
- Ongoing use of the truck load out area at 28 O'Connell Street.

The Bays:

- Ongoing tunnelling by TBM 'Jessie Street' towards Pymont. Use of the slurry treatment plant and load out of spoil. Temporary cessation of tunnelling at the end of the month to allow for support systems to be re-connected after TBM was fully enclosed by the tunnel.
- Use of the crawler crane to load materials into and out of the station box.
- Water treatment using the temporary WTP and ongoing commissioning and testing of the Construction WTP. The Construction WTP did not discharge water during the reporting period.
- Ongoing works on the slurry treatment plant and equipment that support its operation including installation of slurry pipes from the TBM to the Slurry Treatment Plant.
- General support activities such as in the workshops and site offices.
- Use of new staff car parking area at the Bays. Ongoing construction of a truck marshalling area.

3.2 Key Construction Activities Look Ahead

The following works are planned in August 2024:

- Ongoing activities as described above.
- Ongoing tunnelling at the Pymont East site by road header 24/7. Ongoing excavation of material outside of the temporary shaft by rock hammer. Load out of spoil from site.
- Hard demolition to continue at Hunter Street sites using rock hammers and pulverisers, getting closer to ground levels.
- Ongoing tunnelling of TBM 'Jessie' at the Bays and treatment of slurry.

3.3 ER Inspections

Five ER inspections were conducted during the reporting period on each Tuesday. The following actions were raised during the month:

- Clean footpath at Hunter Street East of loose dirt.
- JCG to review sources of water entering drains at the Bays and minimise water entering drains unless water is of a quality that meets EPL discharge criteria.
- Provide containment for water and sediment at the wheel wash at the Bays to prevent over spray entering stormwater drains.
- JCG to provide noise monitoring for Monday (22nd) evening and Tuesday (23rd) early morning at Pymont East, as well as description of corrective action undertaken.
- Ensure noise blankets are placed around demolition activities at Hunter West so they are effective, ensuring gaps with no blankets are minimised.

JCG were observed to be responsive to ER feedback during inspections. Some actions related to noise blanket installation at the Hunter Street sites and ERSED controls at the Bays from prior reporting periods continued into this reporting period.



3.3.1 Photos



Figure 3.1 Pyrmont East: Ongoing installation of the acoustic shed.

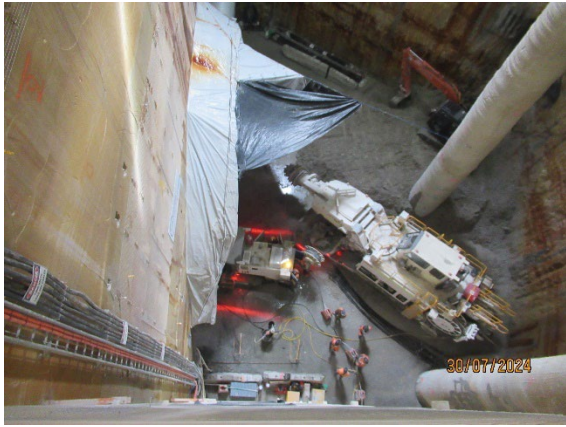


Figure 3.2 Pyrmont East: Tunnelling by road header 24/7 with roof support and ventilation activities ongoing.



Figure 3.3 Pyrmont West: Installation for the steel deck beams.



Figure 3.4 Pyrmont West: Excavation of the ramp to PBR using rock hammers.



Figure 3.5 Hunter St East: Demolition works ongoing.



Figure 3.6 Hunter Street West: Investigations to reduce impacts on Skinnners Hotel ongoing.



Figure 3.7 The Bays: Ongoing tunnelling of TBM Jessie. Temporary cessation of tunnelling to transition TBM support infrastructure.



Figure 3.8 The Bays: Works to complete the Truck Marshalling facility.

3.4 Endorsed document/s

Documents approved or endorsed during the reporting period comprised.

- Visual Amenity Management Plan (VAMP Rev 2)

The VAMP was updated as part of an annual review of the Plan.

In accordance with CoA A32(d)iii the written statements endorsing documents identified in A14, A21, C1, C5 and C14 are provided in Appendix A (if relevant).

3.5 Complaints

Twenty complaints related to ETP were reported by Sydney Metro for July 2024 of which 14 related to the Pyrmont East site and 6 related to the Hunter Street sites.

Of the fourteen of the complaints related to Pyrmont East, 11 related to noise and vibration during out of hours periods. On the night of the commencement of 24/7 tunnelling (22 July) there were 7 complaints, considered to be due to the noise emissions from the ventilation system. JCG added noise attenuation to the ventilation system on the following day (Tuesday 23 July) which reportedly reduced noise emissions significantly.

Other complaints at Pyrmont related to property damage, specifically, damage to tyres (2); and one related to worker behaviour.

Five of the six complaints reported for Hunter Street related to noise and vibration during standard construction hours from the Hunter Street West site (4) and Hunter East site (1) from ongoing demolition related activities. One of these complaints and one other, related to property damage.

3.6 Compliance

3.6.1 Incidents

No incidents considered to represent an Incident as defined under the Project Approval were reported to the ER during the reporting period. No incidents under the JCG reporting systems were reported.

Ongoing discussions are occurring between the AA, Sydney Metro and JCG regarding the commencement of OOHs tunnelling works and the 7 complaints related to this activity on the night of 22 July.



3.6.2 Non-compliance

No non-compliances were reported by JCG or Sydney Metro during the reporting period ER.

3.6.3 Audits

The next Independent Environmental Audit is to be conducted in August 2024.

3.7 Looking Forward – Core Focus Areas

In the next reporting period, the ER Team will be focused on:

- General monitoring of construction activities; including TBM tunnelling at the Bays.
- Noise and dust associated with the ongoing hard demolition activities the Hunter Street sites.
- Noise associated with excavation of the Pyrmont shafts and OOHs tunnelling at Pyrmont East.
- Potential for tracking of dirt at the various demolition sites and at the Bays.



4 PHASE H - WESTMEAD UTILITY RELOCATION

The Sydney Metro West Phase H – Westmead Utilities Relocation involves the installation of new utility services around the new Sydney Metro Station at Westmead via Hawkesbury, Bailey and Hassell Streets.

The Environmental Representatives for the Sydney Metro West Eastern Tunnel Package are:

- Swathi Gowda
- Michael Woolley
- Maulik Bapodara

The Sydney Metro West Phase H – Westmead Utilities Relocation is being delivered by Quickway with the contract being awarded in August 2023.

No EPL will be required for this phase of Sydney metro West.

4.1 Key Construction Related Activities During the Period

- Minor drainage works (daytime only) – civil works completed.
- Note only: It is understood that Telstra are undertaking cable pulling under their own approval process and community notification.

4.1 Key Construction Activities Look Ahead

- Permanent restoration works (Scope and timing - TBC with Council).

4.2 ER Inspections

No ER inspections were completed during the reporting period.

4.2.1 Photos

None.

4.3 Endorsed Document/s

- Minor endorsement of CEMP Rev 5 covering minor drainage work scope.

4.4 Complaints

One complaint relating to worker behaviour was provided to the ER for July 2024. ER requested and was provided with record of reminder toolbox undertaken following complaint.

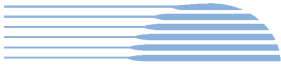
4.1 Compliance

4.1.1 Incidents

No incidents considered to represent Incidents as defined under the Project Approval were reported to or observed by the ER during the reporting period.

4.1.2 Non-compliance

No Non-Compliance Reports were provided to the ER during the reporting period.



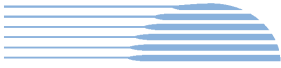
4.1.3 Audits

No audits were conducted during the reporting period. The next Independent Environmental Audit is to be conducted in August 2024.

4.2 Looking Forward – Core Focus Areas

The core focus areas for the coming month are:

- Nil



5 SYDNEY METRO RETAINED OBLIGATIONS AND OTHER ACTIVITY

The Environmental Representatives for the Sydney Metro Retained Obligations and other Activities are:

- Jo Robertson
- Swathi Gowda

The Sydney Metro Retained Obligations and other Activities is being delivered by Sydney Metro with various sub-contractors delivering the works. These works do not require an EPL.

5.1 Key Construction Activities During the Period

The ER is not aware for other Sydney Metro managed construction activities during the period.

5.2 Key Construction Activities Look Ahead

The ER is not aware for other Sydney Metro managed construction activities during the period.

5.3 ER Inspections

There were no ER inspections of this work during the reporting period.

5.3.1 Photos

None

5.4 Endorsed Document/s

No Sydney Metro documents were endorsed during the reporting period.

5.5 Complaints

No complaints have been reported to the ER in relation to the investigations previously conducted for Sydney Metro.

5.6 Compliance

5.6.1 Incidents

No incidents have been reported to the ER in relation to the investigations previously conducted for Sydney Metro.

5.6.2 Non-compliance

No non compliances have been reported to the ER in relation to the investigations previously conducted for Sydney Metro.

5.6.3 Audits

No audits were conducted during the reporting period on this package or works.



6 STATEMENT OF LIMITATIONS

Healthy Buildings International (HBI) has prepared this report in accordance with the requirements of Condition A30(k) of the Sydney Metro West, Concept and Stage 1 SSI 10038 Approval (11 March 2021), and Condition A32(k) of the Sydney Metro West – The Bays to Sydney CBD SSI 19238057 Approval (24 August 2022).

The report is for the sole purposes of Department of Planning, Housing and Infrastructure (DPHI) and Sydney Metro. It has been prepared based on generally accepted practices and standards at the time it was prepared. No other warranty, expressed or implied, is made as to the professional advice included in this Report. This report did not assess any aspects relating to safety.

Where the Report indicates that information has been provided to HBI by third parties, HBI assumes no liability for any inaccuracies in or omissions to that information.

This Report was prepared based on the conditions encountered and information reviewed at this time. HBI disclaims responsibility for any changes that may have occurred after this time.

This Report should be read in full. No responsibility is accepted for use of any part of this report in any other context or for any other purpose or by third parties. This Report does not purport to give legal advice. Legal advice can only be given by qualified legal practitioners.

Except as required by law, no third party may use or rely on this Report unless otherwise agreed by HBI in writing. Except as specifically stated in this section, HBI does not authorise the use or findings of this Report by any third party

To the extent permitted by law, HBI expressly disclaims and excludes liability for any loss, damage, cost or expenses suffered by any third party relating to or resulting from the use of, or reliance on, any information contained in this Report. HBI does not admit that any action, liability or claim may exist or be available to any third party.



HBI Healthy Buildings International Pty Ltd

7 APPENDIX A – ER DOCUMENT ENDORSEMENT RECORDS (ETP ONLY)

www.hbi.com.au

Mr Ben Armstrong
Director Sustainability, Environment and Planning
Metro West
Sydney Metro
Transport for NSW
PO Box K659
HAYMARKET NSW 1240

8 July 2024

REF: 201208 (G) VAMP_Rev 2

Dear Ben

RE: Sydney Metro West Stage 2 – Eastern Tunnelling Package: Visual Amenity Management Sub-Plan (Rev 2)

I refer to Sydney Metro's (SM) submission of the following document required by Condition C1 of the Sydney Metro West – The Bays to Sydney CBD Approval (SSI 19238057) which was approved by the Department of Planning and Environment (DPE) on 24 August 2022:

- Sydney Metro West, Eastern Tunnelling Package Visual Amenity Management Sub-Plan Rev 2 dated 7 June 2024 (SMWSTETP-JCG-SWD-SW000-EN-PLN-002027).

It is noted that:

- The Visual Amenity Management Plan (VAMP Rev 0) was initially prepared by John Holland CPB Ghella JV (JCG) to address the requirements of Condition C1 of the Infrastructure Approval and was endorsed by the ER on 24 March 2023.
- This revision (Rev 2) is part of an annual review by JCG.
- Previous versions (Rev 1) of the document have been reviewed and updated following comments from the ER.
- Sydney Metro has reviewed and commented on previous versions of the document and have no open comments.

Following the above reviews, the revised document is considered to comprise minor amendments only.

As the approved Environmental Representative for the Sydney Metro West and as required by Conditions A32(j), on the basis of the above, the Visual Amenity Management Sub-Plan (Revision 2) is approved.

Yours sincerely

Michael Woolley

Michael Woolley

Environmental Representative – Sydney Metro West – Eastern Tunnelling Package
CC: Ari Stypel and Matthew Murrinan.