

Mr Rob Sherry  
Team Leader Compliance – Government Projects  
Department of Planning, Housing and Infrastructure  
Locked Bag 5022  
PARRAMATTA NSW 2124

6 September 2024

Ref:201208-ER\_DPHI-August 2024

Dear Rob

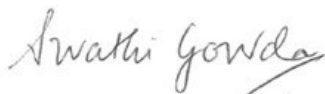
**RE: Sydney Metro - Sydney Metro West SSI - ER Monthly Report for August 2024**

Healthy Buildings International (HBI) submits this report to the Secretary in accordance with:

- Condition A30 (k) of the Sydney Metro West, Concept and Stage 1 SSI 10038 Approval (11 March 2021), and associated modifications (MOD 1 - 28 July 2021, MOD 2 - 3 June 2022, MOD3 – 4 July 2022, MOD 4 - 23 December 2022 and MOD 5 – 20 September 2023); and
- Condition A32(k) of the Sydney Metro West – The Bays to Sydney CBD SSI 19238057 Approval (24 August 2022).

The attached summary details the key activities undertaken by Environmental Representatives for Sydney Metro – Sydney Metro West for the month of August 2024.

Yours sincerely



Swathi Gowda  
Environmental Representative

Cc:

DPHI: Major Projects Portal

Sydney Metro: Matthew Marrinan, John Ieroklis, Andrew Hendy, Cath Snelgrove, Ari Stypel, Ben Armstrong, Sarah Kemp, Syed Shah, Valerie Lebon

Contractors: Jared Lipton (AFJV), Steph Mifsud (GLC), Sally Reynolds (JCG), Tom St Vincent Welch (Quickway)



## Table of Contents

<b>1</b>	<b>Phase B - Central Tunnelling Package</b>	<b>4</b>
1.1	Key Construction Activities During the Period	4
1.2	Key Construction Activities Look Ahead	5
1.3	ER Inspections	5
1.3.1	Photos	6
1.4	Endorsed Document/s	7
1.5	Complaints	7
1.6	Compliance	7
1.6.1	Incidents	7
1.6.2	Non-compliance and Potential Non Compliance	7
1.6.3	Audits	7
1.7	Looking Forward – Core Focus Areas	8
<b>2</b>	<b>Phase F – Western Tunnelling Package</b>	<b>9</b>
2.1	Key Construction Activities During the Period	9
2.2	Key Construction Activities Look Ahead	10
2.3	ER Inspections	10
2.3.1	Photos	11
2.4	Endorsed Documents	14
2.5	Complaints	14
2.6	Compliance	15
2.6.1	Incidents	15
2.6.2	Non-compliance	15
2.6.3	Audits	15
2.7	Looking Forward – Core Focus Area	15
<b>3</b>	<b>Phase G - Eastern Tunnel Package</b>	<b>16</b>
3.1	Key Construction Related Activities During the Period	16
3.2	Key Construction Activities Look Ahead	17
3.3	ER Inspections	17
3.3.1	Photos	18
3.4	Endorsed document/s	19
3.5	Complaints	19
3.6	Compliance	19
3.6.1	Incidents	19
3.6.2	Non-compliance	19
3.6.3	Audits	19



3.7	Looking Forward – Core Focus Areas .....	19
<b>4</b>	<b>PHASE H - Westmead Utility Relocation .....</b>	<b>21</b>
4.1	Key Construction Related Activities During the Period .....	21
4.1	Key Construction Activities Look Ahead.....	21
4.2	ER Inspections .....	21
4.2.1	Photos .....	21
4.3	Endorsed Document/s.....	21
4.4	Complaints .....	21
4.1	Compliance.....	21
4.1.1	Incidents.....	21
4.1.2	Non-compliance .....	21
4.1.3	Audits .....	21
4.2	Looking Forward – Core Focus Areas .....	22
<b>5</b>	<b>Sydney Metro Retained Obligations and Other Activity .....</b>	<b>23</b>
5.1	Key Construction Activities During the Period .....	23
5.2	Key Construction Activities Look Ahead.....	23
5.3	ER Inspections .....	23
5.3.1	Photos .....	23
5.4	Endorsed Document/s.....	23
5.5	Complaints .....	23
5.6	Compliance.....	23
5.6.1	Incidents.....	23
5.6.2	Non-compliance .....	23
5.6.3	Audits .....	23
<b>6</b>	<b>Statement of Limitations.....</b>	<b>24</b>
<b>7</b>	<b>Appendix A – ER Document Endorsement Records (ETP only).....</b>	<b>25</b>



## 1 PHASE B - CENTRAL TUNNELLING PACKAGE

The Environmental Representatives for Phase B of Sydney Metro West are:

- Michael Woolley
- Maulik Bapodara
- Swathi Gowda
- Jo Robertson

Phase B – Central Tunnelling Package (CTP) is being delivered by Acciona Ferroviol Joint Venture (AFJV). Phase B of Sydney Metro West has been further broken into:

- Phase B1: Civil works
- Phase B2: Tunnelling works

The AFJV hold EPL 21610 for this Phase of works. Activities defined as Phase B2-Tunneling Works in the Staging Report for Metro West commenced during the November 2022 reporting period at Burwood North.

### 1.1 Key Construction Activities During the Period

#### The Bays

- Ongoing support activities for the two TBMs that were tunnelling from North Strathfield station box to SOP. These activities included delivery and storage of segments, spoil storage and load out and operation of ventilation systems.
- Ongoing construction of cross passages between the two tunnels.
- Ongoing use of site office facilities; and works shops.
- Operation of the water treatment plant and discharge of treated water.
- Use of the staff car park in the Ports area.

#### Five Dock

- West shaft: Ongoing support for TBM tunnelling for both TBMs.
- East Shaft: Deliveries and various works inside the acoustic shed. Tunnelling support activities. Ongoing concrete works for the invert of the central cavern.
- Ongoing use of a house on Waterview Street adjacent the eastern shaft for project offices.
- Water directed to the Bays water treatment plant for treatment.

#### Burwood North

- OOHs relating to driveways and utilities in various areas around the site.
- Operation of supporting plant for the TBM including the grout plant with frequent cement deliveries, power supply, and segment delivery and storage. Harmonic sub operating. The Tasman tank continues to store potable water for the grout plant. Tunnelling personnel are largely based at BN. Various tunnelling activities in the base of the station box.
- All water for treatment was being directed to the Bays. Some treatment of water in the BN water treatment plant, with treated water going to the Bays for further treatment.
- Concrete works in the cross over cavern for the Plenum.
- Ongoing use of the drop chutes for concrete delivery including OOHs.
- Storage of cross passage spoil and general concrete wastes in the station box and load out of spoil using a crane to load trucks.



- South Shaft: Works complete. Area being used for light vehicle parking.

#### **North Strathfield**

- TBM support within the Station Box for both TBMs.
- Pumping of water from the station box to the Bays for treatment and discharge.

#### **Sydney Olympic Park**

- Surface water is now directed to stormwater instead of the water treatment plant. Water in the station box is managed by the WTP Contractor.
- Installation of anchors for the tower crane.
- Construction of plinths within the station box.
- Trenching and conduit installation for substation in the current Project car park.
- Various deliveries to the station box and laydown of materials at the surface.
- Project Office Operating.

#### **1.2 Key Construction Activities Look Ahead**

- Ongoing activities as described above.
- TBM tunnelling towards SOP.
- Various OOHWs (conducted under the EPL).
- Ongoing planning for demobilisation at all sites.

#### **1.3 ER Inspections**

There were five ER inspections conducted on each Thursday during August. Sites were inspected on an alternating basis. The following actions were raised:

##### **The Bays:**

- Ensure spill kits are full of spill response equipment and lids functional at the Bays.
- Ensure the Port Access Road is maintained as free of dirt with no raised dust.
- Remove loose dirt from the hardstand at the TBM laydown area at the bays.
- Ensure the wheel wash is operating effectively, and if not, have alternative methods of controlling and cleaning up the tracking of dirt onto Port Access Road.

##### **Five Dock:**

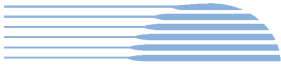
- Remove or paint over graffiti on the electrical kiosk outside the Five Dock West site.

##### **Burwood North:**

- Redirect water accumulated in the corner of the BN acoustic shed to the blocked drain where it can be sucked out to the station box for treatment. Ensure water from the shed is not directed to stormwater.

##### **North Strathfield**

- AFJV to clean hardstand in the area to the country end of the station box at NS. AFJV to confirm if the pit in the area drains to stormwater or is a blind pit.



### Sydney Olympic Park

- Install appropriate drainage and ERSED controls for the ground stabilisation works at SOP and provide an updated ESCP.

AFJV have been responsive in closing out actions raised during inspections. AFJV have been providing regular noise monitoring reports outlining results of attended and unattended monitoring.

#### 1.3.1 Photos



Figure 1.1 Activities in the station box. (The Bays).



Figure 1.2 FRP for the invert of the Central Cavern (Five Dock).



Figure 1.3 Activities in the Eastern shaft (Five Dock).



Figure 1.4 Use of concrete drop chutes (Burwood North).



Figure 1.5 Plenum works in the cross over cavern (Burwood North).

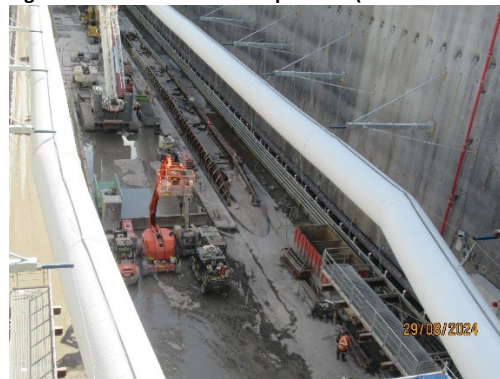


Figure 1.6 Activities in the station box (North Strathfield).



Figure 1.7 TBMs completed their traverse of the Station Box and were tunnelling towards SOP (North Strathfield).



Figure 1.8 Drilling for anchors for the planned tower crane (SOP).

#### 1.4 Endorsed Document/s

The following Plans were approved or endorsed by the ER during the reporting period:

- Nil.

#### 1.5 Complaints

Based on the Sydney Metro Complaint Register for August 2024, there were 10 complaints reported during the month, which compares with 4 complaints received during the previous month (when the TBM was largely traversing North Strathfield station box with less tunnelling).

Six of the complaints related to tunnelling activities of which three related to Ground Borne Noise (GBN) from TBM activities and three related to GBN from cross passage excavation. AFJV indicated that doorknocking had been undertaken along the tunnelling alignment to advise residents of the potential for GBN from tunnelling activities. Tunnelling in the month of August included activities in relatively shallow areas under residents. AFJV advised that TBM tunnelling during September would be in areas which much fewer residents.

One complaint related to a pothole on Burwood Road. One complaint was related to the use of the street sweeper at the Five Dock site. Two complaints were reported at North Strathfield related to the pedestrian crossings in the vicinity of the site.

#### 1.6 Compliance

##### 1.6.1 Incidents

No Incidents as defined in the Infrastructure Approval were reported by AFJV during the reporting period.

No incidents were reported under the Sydney Metro reporting system during the reporting period.

##### 1.6.2 Non-compliance and Potential Non Compliance

No Non-Compliance Reports were provided to the ER during the reporting period.

##### 1.6.3 Audits

The fifth Independent Environmental Audit on the Sydney Metro West, Concept and Stage 1 SSI 10038 Approval commenced in August 2024.



### **1.7 Looking Forward – Core Focus Areas**

- Review of noise monitoring by AFJV to verify compliance with DNVIS predictions.
- Management of Ground Borne Noise from cross passage excavation.





## 2 PHASE F – WESTERN TUNNELLING PACKAGE

The Environmental Representatives for Phase F of Sydney Metro West are:

- Swathi Gowda
- Mike Woolley
- Maulik Bapodara

Phase F – Western Tunnelling Package (WTP) is being delivered by Gamuda Australia Laing O’Rourke Consortium (GLC).

GLC are constructing this Phase of Sydney metro West under EPL 21676.

### 2.1 Key Construction Activities During the Period

During August 2024, construction activities continued at all WTP sites. The following activities were being undertaken at the Sydney Olympic Park (SOP), Westmead, Parramatta and the Clyde stabling and maintenance facility which includes the Rosehill, Clyde Dive and Clyde MSF construction sites:

#### SOP

- TBM 2 (Dorothy) breakthrough occurred on 29 July 2024.
- TBM 2 (Dorothy) dismantling works underway 24/7.
- Cross passage excavation works - spoil from up to nine (9) cross passages being brought to the SOP station box for stockpiling (24/7) and load out to surface (dayshift only).

#### Westmead

- Road header operation in eastern crossover caverns/tunnels to complete invert excavation.
- Cross passage (XP91) excavation complete – sump excavation underway.
- Waterproofing and invert lining works within stub tunnels.
- Spoil stockpiling and load out within Acoustic shed (approximately until September 2024).
- Nozzle formwork deliveries and assembly in base of station box.
- Water Treatment Plant (WTP) is operational.
- Nozzle formwork deliveries and assembly in base of station box.

#### Parramatta

- Eastern station box excavation continuing:
  - Eastern - rock hammering and excavation has re-commenced (dayshift only).
  - Western – installation of first set of walers and struts (dayshift only)
- Nozzle construction:
  - D-wall removal complete
  - Excavation, rock-bolting and shotcreting underway (24/7)
- Archaeological investigations ongoing in Zone 7 (northern portion of the site near George Street) and Zone 7A(2) by GML.
- WTP is operating and discharging as necessary.

#### Rosehill

- TBM deliveries to Rosehill ongoing.



- Assembly and maintenance activities of TBM components, conveyors and grout plant.
- Cross passage works are ongoing.
- WTP operation including off-site discharge is ongoing.
- No spoil movements off-site from Rosehill (currently).
- Preparatory works for TBM 1 relaunch (expected at end of September).

### **Clyde Dive**

- Lining Erection Machine (LEM) lifted into Dive, with assembly ongoing.
- Cavern waterproofing and lining.
- Electric tower crane operation.
- Erection of grout batching enclosure has commenced.
- HV Protection Slab works - on hold for redesign.

### **Clyde MSF**

#### **MSF West**

- Final creek diversion for Duck Creek completed.
- Demolition of the Kay Street bridge ongoing and low flow under construction for Duck Creek ongoing.
- Ground improvement works - CIC piling in Area 4 ongoing.
- Piling for high flow conveyance structures ongoing for Duck Creek and A 'Becketts Creek.
- Temporary creek crossings installed and operational.
- Internal haul roads completed and operational.
- Installation of girders over Unwin St overpass and ABK bridge completed.
- Formwork and retaining wall works ongoing.
- Litter and weed removal works (Duck Creek) ongoing.
- Area 1 swale drainage improvement and culvert installation works at Duck Creek ongoing.
- Placement of fill for Northern Unwin St Road commenced.

#### **MSF East**

- Retaining walls – concrete pours ongoing; Southern anchor block pours complete and northern anchor block major pours continuing.
- Treatment of PASS material.
- Sydney Water – Water Main 1 commissioned and Water Main 2 works commenced.

## **2.2 Key Construction Activities Look Ahead**

The key construction activities planned for September 2024 are similar to those listed in Section 3.1, with the addition of the following:

- Various OOHW (conducted under EPL)
- SOP - Cross passage FRP works (24/7)
- Clyde MSF East – Biobasin excavation
- Clyde MSF West - Northern Unwin St roadworks

## **2.3 ER Inspections**

Currently, the sites are divided into two groups and visited typically fortnightly for ER inspections. The two groups are:

- Parramatta, Westmead and SOP



- Clyde Dive, Clyde MSF and Rosehill

Four ER inspections were conducted during the reporting period (07/8/2024, 14/8/2024, 21/8/2024 and 28/8/2024) with opportunities for improvement (OFIs) identified and the following actions raised during the month:

**Rosehill:**

- Rosehill: Two actions raised relating to inadequate chemical storage (unbunded chemical containers).

**Clyde MSF West:**

- Clyde MSF West: Action raised to ensure dust suppression measures are increased and prioritised particularly during dry and windy conditions for active work areas/activities such as stockpile management, truck loading and unloading operations.
- Clyde MSF West: Action raised to address mud tracking observed on Unwin Street outside MSF Gate 9, as well as internal hardstand areas on-site.

**Westmead:**

- Westmead: OFI raised to address spoil tracked from mechanical workshop area on ramp (within site). GLC reported it was scheduled to be cleaned up on 7/08 as well as the area is captured by the drain that goes to the Water Treatment Plant.

**2.3.1 Photos**

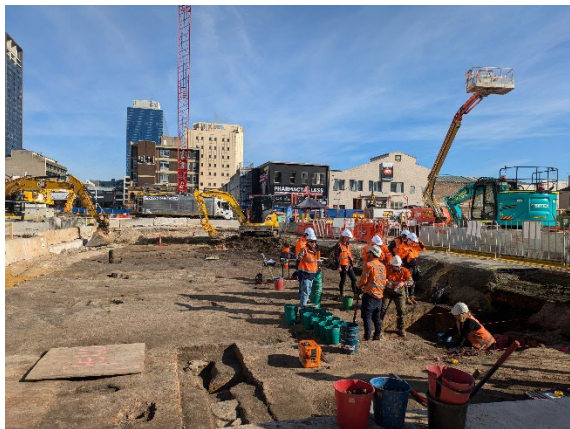


Figure 2.1- Parramatta Site: GML archaeological investigations in Zone 7A(2) with extension of test pits due to artefacts uncovered.

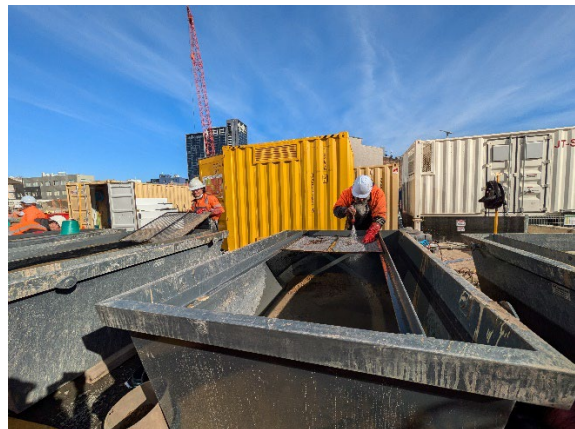


Figure 2.2- Parramatta Site: GML archaeological investigations - sieving underway.



Figure 2.3 - Parramatta Site: Western capping beam poured with formwork being stripped.

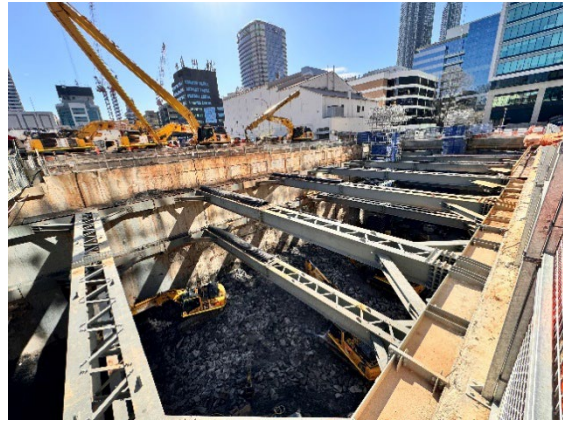


Figure 2.4 – Parramatta Site: Eastern Station Box excavation ongoing.



Figure 2.5 -Westmead Site: Acoustic Shed - Mister observed to operational.



Figure 2.6 – Westmead Site: Spoil loading operations within Acoustic Shed.

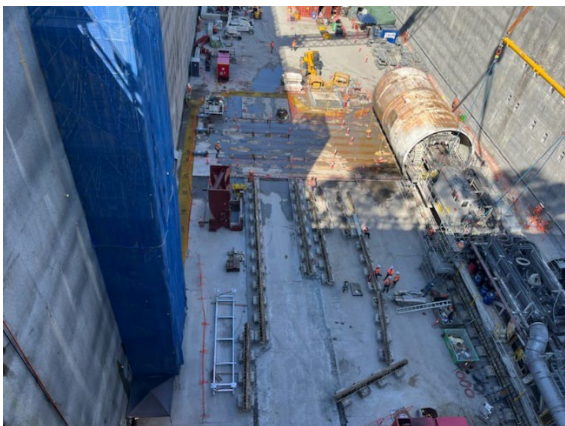


Figure 2.7 - Sydney Olympic Park: TBM 2 dismantling and retrieval works.

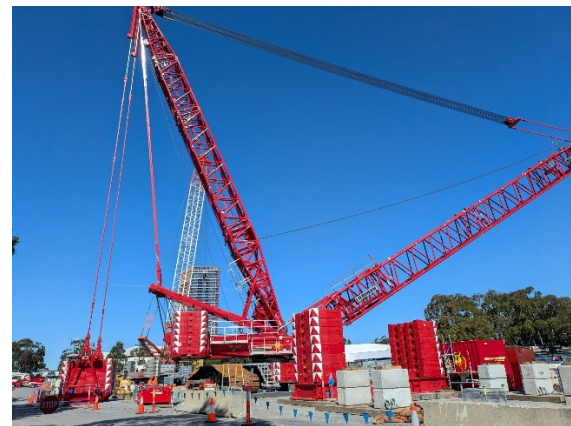


Figure 2.8 - Sydney Olympic Park: Crane set-up to lift TBM 2 components.



Figure 2.9 - Rosehill Site: Hardstand area observed to be tidy.



Figure 2.10 – Rosehill Site Gate: No mud tracking observed.



Figure 2.11 - Clyde MSF West – Area 1 Swale Drain improvement and culvert installation works ongoing.



Figure 2.12: Clyde MSF West – Area 1 Swale Drain improvement and culvert installation works ongoing.



Figure 2.13: Clyde: Kay Street Bridge Demolition works continuing.



Figure 2.14 - Clyde MSF East: New internal haul road established.

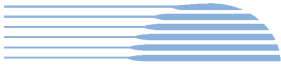


Figure 2.15: Clyde Dive: Wheel wash in use with no mud tracking observed on hardstand area leading up to exit.



Figure 2.16: Clyde MSF West Site Gate 9: Mud tracking observed and raised as an action – refer ER Inspection section.



Figure 2.17: Clyde – Unwin St: Girder installation works.



Figure 2.18: Clyde MSF East: Retaining wall works continuing.

## 2.4 Endorsed Documents

The following documents were approved or endorsed by the ER during the reporting period:

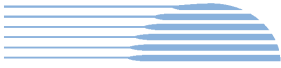
- Flora and Fauna Management Plan (REV J)

## 2.5 Complaints

Based on the Sydney Metro Complaint Register for August 2024, there were 13 complaints reported during the month, compared to 13 complaints in the previous month. Of the 13 complaints, the Complaint Register notes one complaint about a truck emitting pollution near Manly West Primary School (ID#5786) as unrelated to the Sydney Metro Project. The remaining complaints are summarised below.

### Sydney Olympic Park

- Two noise (OOHW) complaints from same stakeholder on 2 August 2024 relating to TBM disassembly/retrieval works, which continued over August with completion of these works scheduled by 11 September 2024. Same stakeholder has complained previously in July 2024.



## **Westmead**

- One complaint related to noise (Std Hours/OOHW).
- One complaint related to worker parking in private residential parking near the Westmead Site.

## **Clyde Dive, Clyde MSF West and Rosehill Sites**

- Two complaints related to soil and water management (mud tracking) on Unwin Street.

## **Parramatta**

- One complaint related to subcontract worker parking private vehicle in the Roxy Arcade public carpark.
- One complaint related to the shared access road, off George St.
- Two noise complaints from Parramatta (both stakeholders raised dust in addition to noise; other issues raised related to trucks, lack of business and lack of street parking).

Other complaints received by the Project in the reporting period included one complaint related to a request for details about a truck registered on the Project and one noise and vibration (OOHW) complaint from stakeholder in North Silverwater from cross passage works.

## **2.6 Compliance**

### **2.6.1 Incidents**

No incidents considered to represent Incidents as defined under the Project Approval were reported to or observed by the ER during the reporting period.

Five (Class 3) incidents were reported under WTP's reporting system during the reporting period.

### **2.6.2 Non-compliance**

One Non-Compliance Report (NCR) provided to the ER during the reporting period is summarised below:

- NCR raised on 20/08/2024 against MCoA D43 and MCoA A45, following receipt of Penalty Notice from DPHI in relation to Westmead Metro Station construction site's DNVIS.

### **2.6.3 Audits**

Independent Environmental Audit #5 commenced in August 2024 with opening meeting on 19 August 2024; with WTP inspection and interviews scheduled on 4 and 5 September 2024.

## **2.7 Looking Forward – Core Focus Area**

The core focus areas for the coming month are:

- Management of ongoing demolition of Kay Street bridge and low flow construction works for Duck Creek.
- Management of mud tracking at Clyde MSF West.
- Management of potential vibration impacts from Northern Unwin St roadworks at Clyde MSF West (adjacent to RTA Depot façade - local heritage significance).



### 3 PHASE G - EASTERN TUNNEL PACKAGE

The Sydney Metro West Eastern Tunnel Package is Stage 2 of the Sydney Metro West CSSI and is described as major civil construction works between The Bays and Sydney CBD, including station excavation at Pyrmont and Hunter Street and tunnel excavation between the Bays and Hunter Street. Stage 2 (SSI 19238057) was approved on the 24 August 2022.

The Environmental Representatives for the Sydney Metro West Eastern Tunnel Package are:

- Michael Woolley
- Maulik Bapodara
- Swathi Gowda
- Jo Robertson

The Eastern Tunnelling Package (ETP) is being delivered by John Holland CPB Ghella Joint Venture (JCG) with the contract being awarded in November 2022. Sydney Metro notified DPHI that the date of commencement of construction was 17 March 2023. JCG have received Environmental Protection Licence (EPL 21784) for the project.

#### 3.1 Key Construction Related Activities During the Period

Works conducted during the reporting period included:

##### Pyrmont East:

- Ongoing tunnelling (24/7), initially by one road header and later in the month by two road headers.
- Ongoing use of the tunnel ventilation system including scrubber unit located at the surface under the acoustic shed, venting to the east of the base of the shed and a second scrubber located in the tunnel.
- Use of the diesel-powered tower crane. Removal of the tower crane on the last weekend of August.
- Installation of remaining louvres in the acoustic shed. Construction of the steel deck to the east of the acoustic shed. Ongoing use of site sheds on the upper deck.
- Operation of the ancillary facility in the parking lane on the south side of Union Street for site sheds.
- Ongoing treatment of water generated from tunnelling activities and groundwater. Discharge of treated water to stormwater system.
- Excavation by rock hammer of a section of the shaft outside the temporary shaft under the steel deck.

##### Pyrmont West:

- Ongoing construction of the steel deck in various stages.
- Removal of accumulated sandstone spoil from excavation activities by truck using the eastern section of the steel deck as a loading point for trucks existing to Pyrmont Street.
- Ongoing excavation of the shaft by multiple rock hammers.

##### Hunter Street West:

- Temporary pause to demolition works in buildings adjacent to Skinners Hotel as engineering investigation were conducted to assess options for structural support of the hotel once adjoining buildings have been demolished. Re-commencement of hard demolition of some sections of 5 Hunter Street and 300 George Street buildings after engineering assessment.
- Ongoing walk through demolition of 9 Hunter Street by excavators with pulverisers and hammers.
- Construction of a flood wall adjacent George Street.
- Ongoing use of the basement load out zone for loading trucks and removal of demolition wastes through driveway to Hunter Street.
- Ongoing deliveries and pedestrian management along Hunter Street.
- Ongoing contamination sampling in some areas with archaeological specialist monitoring.





### **Hunter Street East:**

- Activities inside the Blich Street acoustic shed including ongoing excavation of the station cavern and various adits, turnback's, declines and ventilation shafts; stockpiling and load out of spoil. Construction of concrete support pillars. Use of air ventilation systems and other tunnelling support activities.
- Ongoing hard demolition of buildings on the site using multiple excavators with rock hammers and use of pulverisers where practicable. Electric tower crane in use during demolition works. Demolition was below ground level for all buildings by the end of the reporting period.
- Cessation of the use of the truck load out area at 28 O'Connell Street. Access made to the acoustic shed for truck load out of spoil.

### **The Bays:**

- Ongoing tunnelling by TBM 'Jessie Street' towards Pymont. Operation of the slurry treatment plant and load out of spoil.
- Water treatment and discharge using the Construction water treatment plant. The Temporary water treatment plant was decommissioned and removed from site during the reporting period.
- Ongoing works on the slurry treatment plant and equipment that support its operation including installation of slurry pipes from the TBM to the Slurry Treatment Plant.
- General support activities such as in the workshops, segment delivery and storage and use of site offices.
- Use of the truck marshalling area by trucks waiting to attend other project sites.

### **3.2 Key Construction Activities Look Ahead**

The following works are planned to occur in September 2024:

- Ongoing activities as described above.
- Ongoing tunnelling at the Pymont East site by road headers 24/7. Ongoing excavation of material outside of the temporary shaft by rock hammer. Load out of spoil from site.
- Installation of site sheds on the steel deck to the east of the acoustic shed
- Shaft excavation to commence at Hunter Street sites using rock hammers.
- Shaft excavation to continue at Pymont West.
- Ongoing tunnelling of TBM 'Jessie' at the Bays and treatment of slurry.

### **3.3 ER Inspections**

Four ER inspections were conducted during the reporting period on each Tuesday. The following actions were raised during the month:

- Ensure dust tracking is minimised and controlled to avoid raised dust on Pymont Bridge Road at the Pymont East exit.
- JCG to ensure water from site activities is retained on site at Hunter Street West, and that there are adequate ERSED controls in the pits on Hunter Street.

JCG were observed to be responsive to ER feedback during inspections and for the close out of actions raised.



### 3.3.1 Photos



Figure 3.1 Pyrmont East: Near completion of the steel deck and acoustic shed.



Figure 3.2 Pyrmont East: Tunnelling by two road headers with roof support and ventilation activities ongoing.



Figure 3.3 Pyrmont West: Ongoing construction of the steel deck. Removal of spoil. Excavation by rock hammer.



Figure 3.4 Pyrmont West: Excavation using rock hammers.

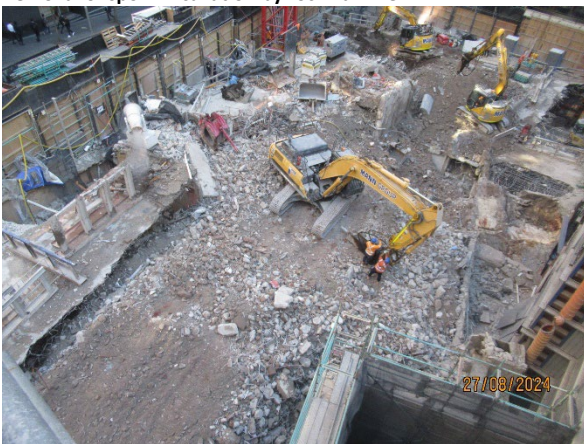


Figure 3.5 Hunter St East: Demolition works below ground level.



Figure 3.6 Hunter Street West: Building at 9 Hunter Street at or below ground level.



Figure 3.7 The Bays: Ongoing tunnelling of TBM Jessie.



Figure 3.8 The Bays: Load out of spoil from TBM tunnelling.

### 3.4 Endorsed document/s

No documents were approved or endorsed during the reporting period.

In accordance with CoA A32(d)iii the written statements endorsing documents identified in A14, A21, C1, C5 and C14 are provided in Appendix A (if relevant).

### 3.5 Complaints

Six complaints related to ETP activities were reported by Sydney Metro for August 2024 compared to 20 complaints received in July. Two of the complaints related to the Pyrmont East site and 4 related to the Hunter Street sites.

The four complaints reported for Hunter Street related to: noise and vibration during standard construction hours from the Hunter Street East site (2); property damage (1); and a truck parked across a pedestrian crossing (1).

The two complaints at Pyrmont East related to property (car tyre) damage and noise from deliveries OOHs.

### 3.6 Compliance

#### 3.6.1 Incidents

No incidents considered to represent an Incident as defined under the Project Approval were reported to the ER during the reporting period. On the 9<sup>th</sup> of August 2024, JCG reported an incident under their internal reporting systems regarding noise levels monitored during the commencement of OOHs tunnelling works on the night of 22 July 2024.

#### 3.6.2 Non-compliance

No non-compliances were reported by JCG or Sydney Metro during the reporting period to the ER.

#### 3.6.3 Audits

The most recent Independent Environmental Audit covering the ETP works commenced in August 2024.

### 3.7 Looking Forward – Core Focus Areas

In the next reporting period, the ER Team will be focused on:



- General monitoring of construction activities; including TBM tunnelling at the Bays.
- Noise associated with the ongoing hard demolition activities and planned shaft excavation at the Hunter Street sites.
- Noise associated with excavation of the Pymont east shaft and OOHs tunnelling at Pymont East.
- Potential for tracking of dirt at the various demolition sites and at the Bays.



## **4 PHASE H - WESTMEAD UTILITY RELOCATION**

The Sydney Metro West Phase H – Westmead Utilities Relocation involves the installation of new utility services around the new Sydney Metro Station at Westmead via Hawkesbury, Bailey and Hassell Streets.

The Environmental Representatives for the Sydney Metro West Eastern Tunnel Package are:

- Swathi Gowda
- Michael Woolley
- Maulik Bapodara

The Sydney Metro West Phase H – Westmead Utilities Relocation is being delivered by Quickway with the contract being awarded in August 2023.

No EPL will be required for this phase of Sydney Metro West.

### **4.1 Key Construction Related Activities During the Period**

- Nil

### **4.1 Key Construction Activities Look Ahead**

- Permanent restoration works (Scope and timing - TBC with Council).

### **4.2 ER Inspections**

No ER inspections were completed during the reporting period.

#### **4.2.1 Photos**

None.

### **4.3 Endorsed Document/s**

- Nil

### **4.4 Complaints**

Nil complaints were provided to the ER for reporting period.

### **4.1 Compliance**

#### **4.1.1 Incidents**

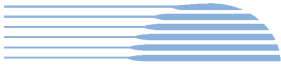
No incidents considered to represent Incidents as defined under the Project Approval were reported to or observed by the ER during the reporting period.

#### **4.1.2 Non-compliance**

No Non-Compliance Reports were provided to the ER during the reporting period.

#### **4.1.3 Audits**

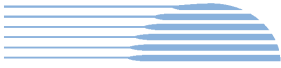
Independent Environmental Audit #5 commenced in August 2024 with opening meeting on 19 August 2024.



#### **4.2 Looking Forward – Core Focus Areas**

The core focus areas for the coming month are:

- Nil



## **5 SYDNEY METRO RETAINED OBLIGATIONS AND OTHER ACTIVITY**

The Environmental Representatives for the Sydney Metro Retained Obligations and other Activities are:

- Jo Robertson
- Swathi Gowda

The Sydney Metro Retained Obligations and other Activities is being delivered by Sydney Metro with various sub-contractors delivering the works. These works do not require an EPL.

### **5.1 Key Construction Activities During the Period**

The ER is not aware for other Sydney Metro managed construction activities during the period.

### **5.2 Key Construction Activities Look Ahead**

The ER is not aware for other Sydney Metro managed construction activities during the period.

### **5.3 ER Inspections**

There were no ER inspections of this work during the reporting period.

#### **5.3.1 Photos**

None

### **5.4 Endorsed Document/s**

No Sydney Metro documents were endorsed during the reporting period.

### **5.5 Complaints**

No complaints have been reported to the ER in relation to the investigations previously conducted for Sydney Metro.

### **5.6 Compliance**

#### **5.6.1 Incidents**

No incidents have been reported to the ER in relation to the investigations previously conducted for Sydney Metro.

#### **5.6.2 Non-compliance**

No non compliances have been reported to the ER in relation to the investigations previously conducted for Sydney Metro.

#### **5.6.3 Audits**

No audits were conducted during the reporting period on this package or works.



## **6 STATEMENT OF LIMITATIONS**

Healthy Buildings International (HBI) has prepared this report in accordance with the requirements of Condition A30(k) of the Sydney Metro West, Concept and Stage 1 SSI 10038 Approval (11 March 2021), and Condition A32(k) of the Sydney Metro West – The Bays to Sydney CBD SSI 19238057 Approval (24 August 2022).

The report is for the sole purposes of Department of Planning, Housing and Infrastructure (DPHI) and Sydney Metro. It has been prepared based on generally accepted practices and standards at the time it was prepared. No other warranty, expressed or implied, is made as to the professional advice included in this Report. This report did not assess any aspects relating to safety.

Where the Report indicates that information has been provided to HBI by third parties, HBI assumes no liability for any inaccuracies in or omissions to that information.

This Report was prepared based on the conditions encountered and information reviewed at this time. HBI disclaims responsibility for any changes that may have occurred after this time.

This Report should be read in full. No responsibility is accepted for use of any part of this report in any other context or for any other purpose or by third parties. This Report does not purport to give legal advice. Legal advice can only be given by qualified legal practitioners.

Except as required by law, no third party may use or rely on this Report unless otherwise agreed by HBI in writing. Except as specifically stated in this section, HBI does not authorise the use or findings of this Report by any third party

To the extent permitted by law, HBI expressly disclaims and excludes liability for any loss, damage, cost or expenses suffered by any third party relating to or resulting from the use of, or reliance on, any information contained in this Report. HBI does not admit that any action, liability or claim may exist or be available to any third party.





HBI Healthy Buildings International Pty Ltd

## **7 APPENDIX A – ER DOCUMENT ENDORSEMENT RECORDS (ETP ONLY)**