
Team Leader Compliance – Government Projects
Department of Planning, Housing and Infrastructure
Locked Bag 5022
PARRAMATTA NSW 2124

6 September 2024
Ref: 170108-ER_DPHI August 2024

Dear 

RE: Sydney Metro City and South West – ER Monthly Reports for August 24

Healthy Buildings International (HBI) submits this report to the Secretary in accordance with:

- Condition A24 (l) of the Sydney Metro City and South West Chatswood to Sydenham CSSI 15_7400 Approval (9 January 2017) and associated modifications MOD1_Victoria Cross and Artarmon (18 October 2017), MOD2_Central Walk (21 December 2017), MOD4_Sydenham Station and Metro Facility South (13 December 2017), MOD 3_ Martin Place Metro Station (22 March 2018), MOD5_Blues Point Acoustic Shed (2 November 2018), MOD6_Administrative Changes (21 February 2019), MOD7_ Administrative Changes (29 June 2020), MOD8_Blues Point Access Site (25 November 2020), and MOD9_ Extension to Standard Construction Hours (30 June 2022); and
- Condition A26 (j) of the Sydney Metro Sydenham to Bankstown Upgrade SSI_8256 Approval (12 December 2018) and associated modifications MOD1_Bankstown Station.

The attached summaries detail the key activities undertaken by Environmental Representatives for Sydney Metro – City and South West Chatswood to Sydenham for the month of **August 24**.

Yours sincerely



Environmental Representative


Cc: Sydney Metro: 
AA: Available on Sydney Metro Website
Contractors: Available to Contractors on Sydney Metro Website
DPHI Compliance: Portal
DPHI Post Approvals: Available on Sydney Metro Website



Table of Contents

1.	ISD – Crows Nest	3
2.	ISD – Pitt Street (now known as Gadigal Station)	6
3.	ISD – Waterloo	8
4.	ISD – Victoria Cross	11
5.	ISD – Martin Place	13
6.	Barangaroo Station (BESIX Watpac)	15
7.	Sydenham to Bankstown Sydney Metro Corridor (SMC) and Bankstown Early Works (BEW) and Additional Corridor (BAC)	17
8.	Sydney Metro Retained Obligations (SM).....	19
9.	Errant and Hostile Vehicle Mitigation Treatments (EHVMT)	20
10.	Statement of Limitations	21



1. ISD – Crows Nest

Project Approval	Contract Package	EPL	Environmental Representative/s
SSI 7400 (C2S)	Crow’s Nest ISD (CN-ISD) AW Edwards	No EPL	[REDACTED]
Key Construction Activities During the Period			
<ul style="list-style-type: none"> ▪ Minor concrete pumping and pouring on Pacific Highway/Clarke Lane – Site B - mostly completed ▪ Public domain work at Oxley Street, Clarke Street and Hume Street – ongoing ▪ Ultegra Works at Clarke Lane - HV and LV trenching and cable pulling - completed ▪ Ultegra Works at Hume Street south side completed, north side - ongoing ▪ Ultegra Works – Pacific Highway - completed ▪ Clarke Lane restoration - completed ▪ Bollards work at Site A and B was completed, Site C - ongoing ▪ Pacific Highway intersection works ongoing ▪ Mill and re-sheet Hume, Oxley, Clarke Streets and Pacific Highway - ongoing ▪ Light poles installation on Pacific Highway - ongoing ▪ Tower Crane 4 removed ▪ Noted that landscaping planting was mostly completed 			
Key Construction/Activities Look Ahead			
<ul style="list-style-type: none"> ▪ Rectification works ▪ Public domain work at Oxley Street, Clark Lane, Clarke Street and Hume Street Pacific Highway intersection works ▪ Smartpole (lights) installation/rectification on Pacific Highway, Clark Street and Oxley Street ▪ Site C works are due to finish in August/September ▪ Mill and re-sheet Hume, Oxley, Clarke Streets and Pacific Highway 			
ER Inspections			
<p>There was one ER inspection conducted on 8 August 2024. The following was noted:</p> <ul style="list-style-type: none"> ▪ Hume Street bridge had been completed. AWE informed the ER that the opening of the bridge was pending Transport NSW approval. ▪ A truck was observed parking in the Hume Street Bus Zone. AWE informed the ER that they had investigated and the truck was not related to construction staff. ▪ It was noted that traffic control was in place and managed traffic/pedestrian movements on Clark Street. 			



Photos

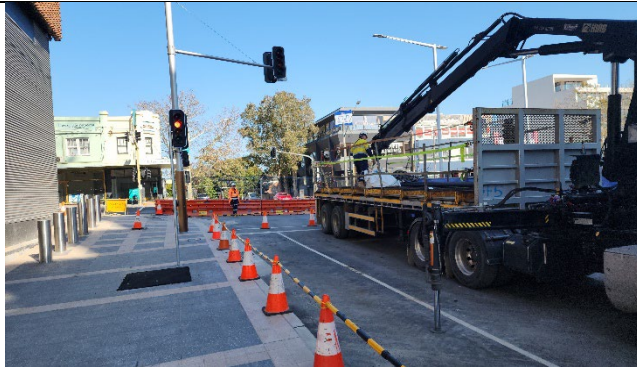


Oxley Street - AWE was cleaning out stormwater drains (flushing) as part of the completion works. Installation of bollards was complete. Pedestrian paving works were ongoing during the inspection.



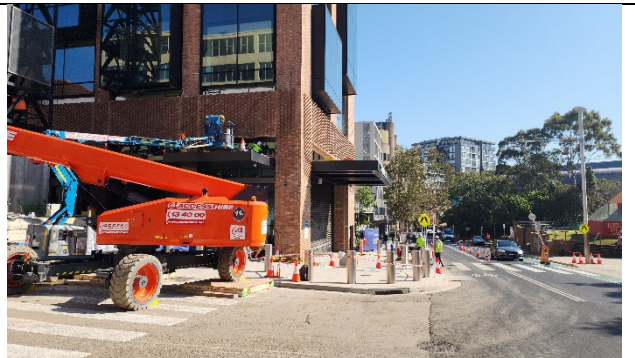
Site A from Pacific Hwy – Pedestrian fencing and bollards installed.

Site B from Pacific Hwy.



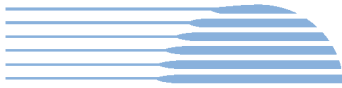
Hume Street Bridge.

Clark Lane (south) from Hume Street.



Hume Street from Clark Street.

Clark Street from Hume Street.

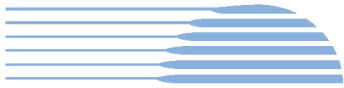


Endorsed Document/s
<ul style="list-style-type: none">OOHW 49 – Precinct Finishing Works (updated for road resurfacing). Reviewed and closed comments on the Environmental Review for Hume Street partial closure.
Complaints / Incidents / Non-compliance
<p>Since commencement of City metro services passenger operations on Monday 19 August 2024, Sydney Metro is now providing summaries of CSW complaints on a weekly basis (was provided daily until 16 August 2024) to DPHI and ERs covering complaints related to remaining construction works.</p> <p>Complaints are discussed where relevant for the Crows Nest ISD package below.</p> <ul style="list-style-type: none">There was one non-compliance raised and no incidents related to the project reported to the ER during this reporting period. There were no incidents reported to the ER under conditions A41 to A44 of SSI 7400.<ul style="list-style-type: none">A NCR was raised against CoA C8 (implementation of SWMP) for sediment tracking from Hume Street onto Clarke Street without controls being in place.There were 12 complaints raised for Crows Nest ISD during August 2024.<ul style="list-style-type: none">One complaint was raised for property damage, however, this was reported to be damage to Site A and subsequently reclassified as not related to Sydney Metro (noting that the area was under construction)Six complaints about property access (three related to blocking access and three for permanent signs indicating no access)One complaint was raised for out-of-hours noise from a lighting towerOne complaint regarding the potential safety of the recently milled roadOne complaint concerning potential business impacts of upcoming work on Clark StreetTwo complaints regarding the potential safety of pedestrian crossings
Audits (specific to packages reported in this report)
No ER involvement was requested in audit activity including Independent Environmental Audits.
Looking Forward – Core Focus Areas and ER Closing Comments
Core Focus Areas <ul style="list-style-type: none">Continue to monitor OOHW and adjust as requiredMonitor public domain works for community impactsMonitor worker behaviour impacts on the communityMonitor access impacts and compliance with Hume Street opening ER Closing Comments: <ul style="list-style-type: none">The ER noted that a marked increase in complaints occurred during August, and investigations are ongoing into compliance with these complaints. Access issues have been discussed regularly with AW Edwards and Sydney Metro during August, noting that these were all avoidable.



2. ISD – Pitt Street (now known as Gadigal Station)

Project Approval	Contract Package	EPL	Environmental Representative/s
SSI 7400 (C2S)	Gadigal (Pitt Street) ISD (PS-ISD) - CPB Contractors	No EPL	██████████
Key Construction Activities During the Period			
<p>Pitt Street South (PSS)</p> <ul style="list-style-type: none"> OSD crane removed Facade works ongoing on Pitt Street Adjustments of hoarding to allow for footpath/public domain works ongoing Bathurst St Awning installation <p>Pitt Street North (PSN)</p> <ul style="list-style-type: none"> Podium fit-out ongoing behind hoarding ongoing Bollard installation completed Park Street pedestrian walkway diverted into station entrance Adjustments of hoarding to allow for footpath/public domain works continued Facade installation on Pitt Street and Castlereagh Street is ongoing <p>Utilities ongoing, with estimated completion below:</p> <ul style="list-style-type: none"> PSN Externals utilities i.e. comms, NBN PSN stormwater ongoing Smartpole installation completed 			
Key Construction/Activities Look Ahead			
<ul style="list-style-type: none"> Portion 3 (External works) Portion 4 (works which are part of portion 2 but not required for operation) 			
ER Inspections			
Due to the low risk, no ER inspections were undertaken during August 2024.			
Photos			
Nil			
Endorsed Documents			
<ul style="list-style-type: none"> Nil Note: Open out of hours approvals are 062 for footpath and landscaping and 064 for project works from July to October 2024) 			
Complaints / Incidents / Non-compliance			
<p>Since commencement of City metro services passenger operations on Monday 19 August 2024, Sydney Metro is now providing summaries of CSW complaints on a weekly basis (was provided daily until 16 August 2024) to DPHI and ERs covering complaints related to remaining construction works. Complaints are discussed where relevant for each package below.</p> <p>There were no incidents reported to the ER under conditions A41 to A44 of SSI 7400. Where the ER is aware of minor events and non-compliances, these are as documented below.</p>			
<ul style="list-style-type: none"> There were no non-compliances or incidents related to the Project reported to the ER during this period. Two Project-related complaints during the reporting period <ul style="list-style-type: none"> One for business impacts from OOH noise One for worker behaviour (unapproved use of private water tap) 			
Audits (specific to packages reported in this report)			
No ER involvement in audit activity including Independent Environmental Audits.			



Looking Forward – Core Focus Areas and ER Closing Comments

Core Focus Areas

- Ongoing focus on out-of-hours work
- Public domain works and implementing management plans

ER Closing Comments:

- The Project continues to perform well, with ongoing OOH scheduling of utility providers occurring with the acoustic advisor and ER updated weekly. The ER inspections continue to be based on scope and risk.
- It should be noted that this is last Monthly ER Report for Gadigal (Pitt St) ISD. Future reporting will be by exception, dependant on relevance and scope of works being undertaken.



3. ISD – Waterloo

Project Approval	Contract Package/EPL	Environmental Representative/s
SSI 7400 (C2S) (Does not include associated SSDs)	Waterloo ISD – John Holland No EPL	[REDACTED]

Key Construction Activities During the Period

City metro services passenger operations commenced on Monday 19 August 2024.

Key Construction Activities:

- Traffic control signals work – Botany /Raglan St
- Civil works around the perimeter of Waterloo Station including installation of signage, kerbs, drainage, Sydney Water culvert, garden beds, footpath upgrades and road pavement

Key Construction/Activities Look Ahead

- Traffic control signals work – Botany Rd/Raglan St intersection (OOHW)
- Permanent restoration works on Cope, Raglan and Wellington streets and Botany and Henderson roads (Standard Hours/OOHW)

ER Inspections

One ER inspection conducted by the ER on 1 August 2024 [Temp 10.8°C, Wind Dir –W, Wind speed – 22km/h and rain since 9am – 0.4mm (Source - BOM Sydney Observatory Hill for 1/08/2024 @9am); Rainfall previous days to inspection: 0.0 mm on 29/7, 0.8mm each on 30/7 and 31/07]] with the following issues/actions raised:

- Raglan/Cope St Intersection: Action raised to investigate/raise incident for hydraulic oil staining noted on northern end of Raglan Street, if JHG related and to remove/dispose asphalt placed on grassed section of footpath on Raglan Street appropriately (JHG noted clean-up in progress).
- Cope St: Footpath reinstatement on south-eastern end of Cope St underway. Noting ATF fence removal works that was underway, discussed and raised tree protection/signage and awareness given recent NCR relating to tree damage.
- Wellington St: Full closure re-commenced on 31/07/2024 (and until 03/08/2024) for stormwater culvert works during standard construction hours. Action raised to install shade cloth/noise mats on Wellington Street worksite and provide evidence to ER.

Photos



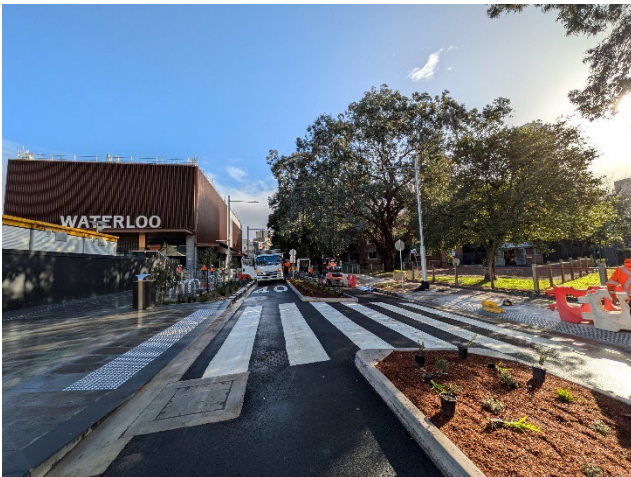
Raglan St/Cope St: Intersection works completed and operational.



Northern Building and Station Entrance – Raglan St: Bollards, paving and raingarden installed.



Cope Street: ATF fence removal, planting, demobilisation and clean-up underway.



Cope Street: Pedestrian crossing on Cope Street completed.



Wellington Street: Stormwater culvert works. Refer action raised under ER Inspection Section.

Endorsed Documents

- OOHWA #61 - Botany Rd Reinstatement Rev F
- OOHW #54 - Civil Main Works Rev 12 (Aug - Sep 2024)

Complaints / Incidents / Non-compliance

Since commencement of City metro services passenger operations on Monday 19 August 2024, Sydney Metro is now providing summaries of CSW complaints on a weekly basis (was provided daily until 16 August 2024) to DPHI and ERs covering complaints related to remaining construction works. Complaints are discussed where relevant for each package below.

There were no incidents reported to the ER under conditions A41 to A44 of SSI 7400. Where the ER is aware of minor events and non-compliances, these are as documented below.



Minor (Class 3) incidents in reporting period are summarised below:

- 01/08/2024 - Minor oil leak (on 31/07) from truck at intersection of Raglan/Cope St

One non-compliance reported to the ER during this reporting period are summarised below:

- Non-compliance raised against CoA E44e on 21 August 2024 following investigation of complaint received on 21 August 2024 from Wellington Street, Waterloo. JHG identified that WARD Civil (JHG Subcontractor) were completing work activities that had not been approved by JHG. These works were not communicated to JHG staff and therefore the work location and activity had not been communicated to the Community. Activities described to have been undertaken included concrete coring for Street signage. JHG Supervisor stopped the works by WARD Civil and the sub-contractor was packed up at ~ 10:52PM.

Project related complaints during the reporting period are summarised below:

- 21/08/2024 – WL ISD: One complaint regarding OOH night works on Wellington St. NCR raised in relation to this complaint – refer above.

Complaints unrelated to WL ISD JHG/SM activities during this reporting period:

- Nil

Audits (specific to packages reported in this report)

No ER involvement in audit activity including Independent Environmental Audits.

Looking Forward – Core Focus Areas and ER Closing Comments

Core Focus Areas:



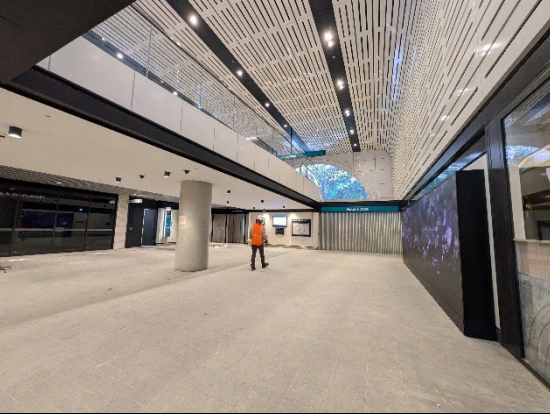

- TCS and permanent restoration OOHW works that remain (September – October 2024)

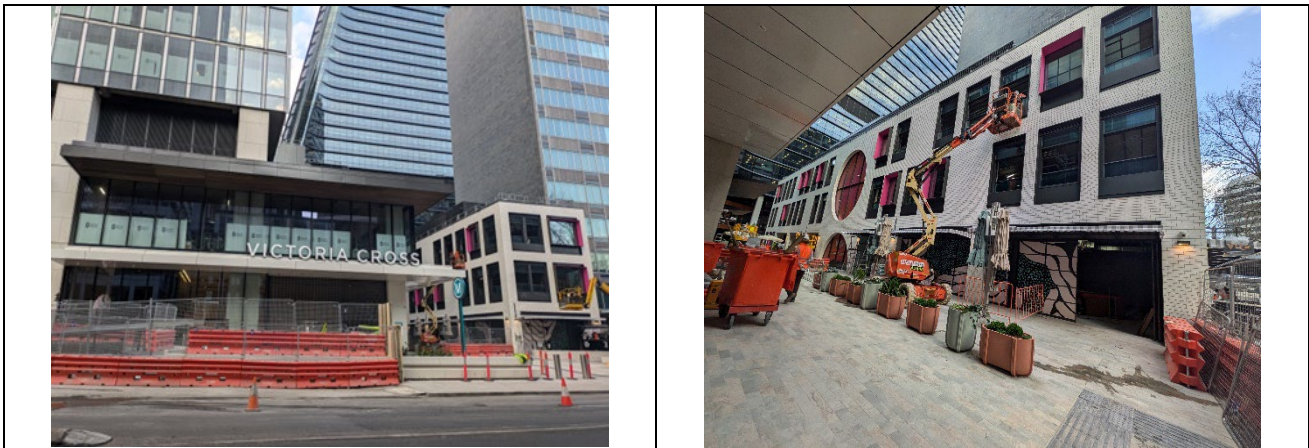
ER Closing Comments/Notes:

- One OOHW complaint during the reporting period, with NCR raised as summarised above. Contractor to ensure continued focus on compliance for Project during completion phase.
- It should be noted that this is last Monthly ER Report for Waterloo ISD. Future reporting will be by exception, dependant on relevance and scope of works being undertaken.



4. ISD – Victoria Cross

Project Approval	Contract Package	EPL	Environmental Representative/s
SSI 7400 (C2S)	Victoria Cross ISD (VC-ISD) Lend Lease (LL)	No EPL	[REDACTED]
Key Construction Activities During the Period			
City metro services passenger operations commenced on Monday 19 August 2024.			
Key Construction Activities:			
<ul style="list-style-type: none"> ▪ WAD intersection upgrade works North and South 			
Key Construction/Activities Look Ahead			
<ul style="list-style-type: none"> ▪ WAD intersection upgrade works North and South (OOHW) 			
ER Inspections			
<p>One ER inspection conducted by the ER on 9 August 2024 [Temp 17.4°C, Wind Dir –E, Wind speed –17km/h, 0.00 mm rain since 9am (Source - BOM Sydney Observatory Hill for 09/08/2024 @3.30pm); Rainfall previous days to inspection], with the following issues/actions raised:</p>			
<ul style="list-style-type: none"> ▪ Miller St /McLaren St WAD intersection upgrade works: Discussed tree protection, material storage within tree drip zone and scheduling of sweeper to tidy up gutter. Action raised for LL to address. ▪ VCN North Yard: Demobilisation ongoing and handover of North Yard to SM scheduled to occur end of August 2024. Discussed and raised general housekeeping required and sweeping of hardstand area within the yard and McLaren Street near site access/egress. Action raised for LL to address. 			
Photos			
			
<p>Miller St /McLaren St intersection: WAD intersection upgrade works.</p>	<p>VCN (McLaren St): Paving tie-in works and bollards installed.</p>		
			
<p>Denison Street – Station Entrance and shop fit-out underway.</p>			



Miller St – Station Entrance: Paving installed, planting and tidy up underway.

Endorsed Document/s

- OOHWA 33 - VCISD WAD intersection works North & South Rev 3

Complaints / Incidents / Non-compliance

Since commencement of City metro services passenger operations on Monday 19 August 2024, Sydney Metro is now providing summaries of CSW complaints on a weekly basis (was provided daily until 16 August 2024) to DPHI and ERs covering complaints related to remaining construction works. Complaints are discussed where relevant for each package below.

There were no incidents reported to the ER under conditions A41 to A44 of SSI 7400. Where the ER is aware of minor events and non-compliances, these are as documented below.

- Nil Class 3 incidents reported to the ER during this reporting period.
- Two non-compliances reported to the ER during this reporting period against CoA E44 (f) as summarised below:
Two complaints (from same complainant) relating to hours of work were received on 7 and 26 August 2024 adjacent to the North site. The complaint was regarding high noise continuing past the 10pm limit within the relevant out of hours approval (OOHWA #33 WAD intersection works). Two non-compliances were recorded against CoA E44 (f) on 7 and 26 August 2024 respectively, as the OOHWA does not permit jackhammering past 10PM.

Project related complaints during this reporting period are summarised below:

- 7/08/2024 and 26/08/2024 – VC ISD (VCN) – Two x Noise and Vibration OOHW – Two complaints received from resident about noisy works happening beyond 10pm. NCRs raised in relation to both complaints – refer above.

Unrelated complaints during this reporting period are summarised below:

- Nil

Audits (specific to packages reported in this report)

No ER involvement in audit activity including Independent Environmental Audits.

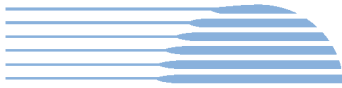
Looking Forward – Core Focus Areas and ER Closing Comments

Core Focus Areas



- WAD intersection upgrade works North and South ongoing (OOHW) - expected completion for the North Site by 4 September 2024 and South Site by 5 October 2024

ER Closing Notes/Comments:

- Two Project related OOH noise complaints received during the reporting period as summarised above, with NCRs raised. Contractor to ensure implementation of OOHWA requirements including restrictions.
- It should be noted that this is last Monthly ER Report for Victoria Cross ISD. Future reporting will be by exception, dependant on relevance and scope of works being undertaken.



5. [ISD – Martin Place](#)

Project Approval	Contract Package	EPL	Environmental Representative/s
SSI 7400 (C2S)	Martin Place ISD (MP-ISD) Macquarie Bank/Lend Lease	No EPL	[REDACTED]
Key Construction Activities During the Period			
<p>The Sydney Metro and Martin Place Station commenced operation and opened to the public on 19 August 2024.</p> <p>Martin Place North (MPN)</p> <ul style="list-style-type: none"> Ongoing works in small discrete areas of the public domain (footpaths) on Elizabeth, Castlereagh and Hunter Streets including paver installation. Some of these works were conducted OOHs and required footpath closures. Macquarie Bank continued to occupy and work out of the North Building above the CSSI level. <p>Martin Place South (MPS)</p> <ul style="list-style-type: none"> General completion of tiling and other works within sections of the public space of Martin Place. Ongoing use of the areas by the public. Ongoing works to infill the MLC stairs. This comprised ongoing use of site sheds; works on the stairwell within the temporary hoarding; and deliveries. Access to the area is from Castlereagh Street. Other activities prior to 19-8-24 in preparation for opening of the Metro station to the public. Some works above conducted OOHs. <p>Station Caverns and Adits</p> <ul style="list-style-type: none"> Construction Completion previously achieved. Line Wide works in the station caverns, including ongoing testing of trains up to operation commencement on 19-8-24. 			
Key Construction/Activities Look Ahead			
<ul style="list-style-type: none"> Road restoration works around the site, generally conducted on weekends and OOHs. Ongoing works to fill in the former stairwell in Martin Place. Ongoing defect works. 			
ER Inspections			
<p>No formal ER inspection was conducted during the reporting period. The ER has conducted informal inspections from public areas on various occasions during the reporting period with feedback provided to Lendlease when relevant. Activities observed included ongoing public works on footpaths and ongoing works to infill the MLC stairs (from outside the site).</p>			
Photos			
			
<p>Martin Place: Works on footpaths in Martin Place completed.</p>		<p>Martin Place: Works on footpaths in Martin Place completed.</p>	



Martin Place: Works continued to fill in the MLC stairs.

Martin Place: Works continued to fill in the MLC stairs.



Martin Place: Site access to works to fill in the MLC stairs.

Martin Place North: Foyer closed prior to operation commencement on 19 August 2024.

Endorsed Document/s	
<ul style="list-style-type: none"> MP-ISD OOHW 104 MLC Stairs (Rev 3) 	
Complaints / Incidents / Non-compliance	
<p>No complaints were reported to have been received by the project during the reporting period. There were no incidents or non-compliances reported to the ER under conditions A41 to A44 of SSI 7400 for Martin Place.</p>	
Audits (specific to packages reported in this report)	
<p>There was no ER involvement in audit activity including Independent Environmental Audits.</p>	
Looking Forward – Core Focus Areas and ER Closing Comments	
<ul style="list-style-type: none"> Ongoing works to infill the MLC stairs and road re-sheeting. It should be noted that this is the last Monthly ER Report for Martin Place. Future reporting will be by exception, dependant on relevance and scope of works being undertaken. 	



6. Barangaroo Station (BESIX Watpac)

Project Approval	Contract Package	EPL	Environmental Representative/s
SSI 7400 (C2S)	Barangaroo Station (BESIX Watpac)	No EPL	[REDACTED]
Key Construction Activities During the Period			
<p>Civil:</p> <p>Zone 1 (Main Site):</p> <ul style="list-style-type: none"> Load-out of remaining stockpiles; Materials removal and consolidation in preparation for handover of Area 7 back to INSW Water Treatment Plant (WTP) operation ongoing - handover date to MTS pending 25 Hickson Road car park works ongoing H01-02 stormwater line rectification works ongoing (subject to EWMS) <p>Zone 1, 2 & 3 (Portion 3):</p> <ul style="list-style-type: none"> Finishing works for public domain and landscaping completed Station entrance areas handed over for operations commencement <p>Zone 4 (Portion 5):</p> <ul style="list-style-type: none"> Installation of architectural finishes to the ventilation pods ongoing Removal of protective mesh on Hickson Road wall completed; restoration / rendering continuing Installation of strata volts for landscaping <p>Zone 5 (The Cutaway):</p> <ul style="list-style-type: none"> Landscaping, footpath, seating and lighting completed and handed over <p>Zone 6 (Hickson Road, under bridge) (Portion 4):</p> <ul style="list-style-type: none"> Road and footpath works ongoing. Construction of new bus stop under bridge. Stop start single lane works continue during the day OOHWA-033 works commenced for final surface and line marking <p>Station Box:</p> <ul style="list-style-type: none"> FPS commenced on 19 August 2024 			
Key Construction Activities Look Ahead			
<ul style="list-style-type: none"> Hickson Road wall remediation H01-02 rectification works Installation of architectural elements (FRP) to the ventilation pods Reinstatement of 25 Hickson Road car park Handover of WTP Handover of Portion 4 (Zone 6) (September 2024) Handover of Portion 5 (ventilation pods) (December 2024) 			
ER Inspections			
No inspections conducted by the ER in August 2024.			
Photos			
Nil			
Endorsed Document/s			
<ul style="list-style-type: none"> OOHWA-033 Road Completion_R01_Opt 			
Non-compliance/ Incidents or Repeat Complaints			
<ul style="list-style-type: none"> There were no incidents for Barangaroo Station reported to the ER under condition A41 of SSI 7400 for the reporting period. There were no Class 3 environmental incidents reported to the ER for Barangaroo Station for the reporting period. There were no non-compliances (NC) reported to the ER for Barangaroo Station for the reporting period. The ER is not aware of any complaints received in August 2024 related to BESIX Watpac works. 			



Audits
No ER involvement in audit activity including Independent Environmental Audits.
Summary of Environmental Performance
Water treatment remains a focus as long as the WTP is managed by the Construction contractor. The Groundwater and vapour intrusion report has been finalised and recommends a program of ongoing monitoring, which will need to be implemented by Sydney Metro and the selected contractor ongoing to ensure compliance with the Site Audit Report recommendations for the station box. A water quality monitoring program will also need to be prepared and implemented by MTS (Operator) when the WTP is handed over to their care.
Looking Forward – Core Focus Areas
<ul style="list-style-type: none">▪ Management of noise during remaining OOH Work in Zone 6 (road finishing works).▪ CTR Q1 and Q2 2024 (review underway).▪ Verification of compliance with CoA E67 and implications of the station box remaining un-tanked post construction completion. Some evidence remains outstanding before compliance can be verified. To be included in CTR Q1 Q2 2024.▪ Handover of the WTP and the transfer of required information to the Operator and regulators to ensure achievement of water quality objectives (Condition E107)/minimisation of environmental risk ongoing.▪ It should be noted that this is last Monthly ER Report for Barangaroo Station. Future reporting will be by exception, dependant on relevance and scope of works being undertaken.



7. Sydenham to Bankstown Sydney Metro Corridor (SMC) and Bankstown Early Works (BEW) and Additional Corridor (BAC)

Project Approval	Contract Package	EPL	Environmental Representative/s
SSI 8256 (S2B)	Southwest Metro Corridor (SMC)	#21147	[REDACTED]
Key Construction Activities - During the Period			
<ul style="list-style-type: none"> ▪ Project wide: pole installation for CCTV cameras at the rail corridor gates ▪ Security fence installation, including ongoing tree impact assessment, pruning, removal and ecologist supervision. Some sections adjacent to Threatened Ecological Communities (TECs) and threatened species, e.g. Breust Street ramp (Punchbowl), Urunga Parade (Punchbowl), South Terrace (Bankstown) ▪ Installation of mechanical gap filler recess, on station platforms ▪ Survey of trees in station precincts continued to verify compliance with the SPIR (potential for planning approval Modification). Preparation of Station Precincts Tree Report ▪ Archaeologist supervision within Archaeological Management Zones (AMZs), and assessment of new areas ▪ Ongoing operation of site office caravans at selected Metro Services Buildings (MSBs) ▪ Stockpile management including waste classification, waste tracking, load-in / load-out, management of site accesses and truck routes ▪ Canterbury Compound: Site offices and amenities, fuel and gas storage; implementation of the weed management plan ▪ North Terrace Compound, Bankstown: Site offices and amenities, fuel and gas storage ▪ Campsie: Drainage behind Charles Street Mechanic’s Workshop commenced, subject to Environmental Review ▪ Wiley Park: Security fence installation, subject to ongoing redesign to retain mature trees on the nature strip. Protection of heritage-listed stone garden bed edging. Ongoing updates to the Tree Report. ▪ Bankstown Station: Northern platform – completion of works; some minor finishing works remain; Tree protection and management; Ongoing use of hardstand material storage compound; North Terrace carpark area assessed through an Environmental Review and NDD works commenced in July 2024 and ongoing. Planning for further extension of laydown/work area on North Terrace. ▪ Planning for SWM3: Installation of fence posts/mesh screen for additional SWM3 work area. SWM3 investigation works subject to due diligence assessments. Review of CEMP (Rev24) for SMC Additional Works (ER Approval) and SWM3 (DPHI Approval). 			
Key Construction Activities Look Ahead			
<ul style="list-style-type: none"> ▪ Preparation including noise modelling for upcoming possessions ▪ Preparation and review of SWM3 CEMP and Sub-plans ▪ Preparation of ancillary facilities 			
ER Inspections			
<p>There was one ER inspection conducted in August 2024, 13/08/2024. Issues discussed and actions raised included:</p> <ul style="list-style-type: none"> ▪ Canterbury - Oily sheen in the site compound carpark. ▪ Lakemba - Storage of material and equipment within drip line of tree within laydown ▪ Belmore - Mud tracking within hardstand areas of ancillary facility and adjacent public road 			



Endorsed Document/s
<ul style="list-style-type: none"> ▪ CEMP Rev24 (SMC Additional Works), 12/08/2024 ▪ Minor Ancillary Facility Checklist under CoA A19 for Dulwich Hill and Punchbowl, 21/08/2024 ▪ Ancillary Facility Checklist for Carrington Rd, 21/08/2024
Non-compliance/ Incidents or Repeat Complaints
<p>Since commencement of City metro services passenger operations on Monday 19 August 2024, Sydney Metro is now providing summaries of CSW complaints on a weekly basis (was provided daily until 16 August 2024) to DPHI and ERs covering complaints related to remaining construction works. Complaints are discussed where relevant for each package below.</p> <p>There was one non-compliance reported to the ER during the period.</p> <ul style="list-style-type: none"> ▪ 25/08/2024 – Project environment team identified that unapproved OOHW occurred at Belmore Station during WE08 Possession due to insufficient planning time and pressure from a short lead-up, leading to HV Isolation not being granted. Work was stopped when the NC was identified, however it was resumed to meet the possession handback requirements. <p>There were no incidents reported to the ER under Condition A36 of SSI 8256.</p> <p>There were no Class 3 environmental incidents reported to the ER during the period.</p> <p>The ER is aware of five complaints received in August 2024 related to the SMC works:</p> <ul style="list-style-type: none"> ▪ Complaint ID 5757 (06/08/2024): Resident complained about loud noise from the MSB site during standard construction hours and queried about noise monitoring. ▪ Complaint ID 5764 (07/08/2024): Resident complained about SM contractor parking in the commuter carpark. ▪ Complaint ID 5772 (13/08/2024): Punchbowl resident complained about SM contractors parking in front of their property instead of on the corridor side of South Terrace. ▪ Complaint ID 5797 (25/8/2024): Canterbury resident complained about excessive noise during WE08 possession works. ▪ Complaint ID 5808 (29/08/2024): Resident raised if fence was being built in line with the appropriate design and projects conditions of approval.
Audits
No ER involvement in audit activity including Independent Environmental Audits.
Summary of Environmental Performance
Environmental risks are consistent with out of hours works during possessions and maintaining compliance with the Tree Report process during security fence installation. Actions raised during ER inspections are closed-out within the agreed timeframe with useful supporting documentary evidence provided.
Looking Forward – Core Focus Areas
<ul style="list-style-type: none"> ▪ Management of ERSED controls generally. ▪ Management of noise during OOH Work during possessions. ▪ Management of tree impacts during construction of security fencing along the alignment, and maintenance of the buffer zone. ▪ Compliance with the planning approval for the use of land outside the project boundary, including ancillary facilities. ▪ Review of CEMP and Sub-plans and associated risks for SWM3.



8. Sydney Metro Retained Obligations (SM)

Project Approval	Contract Package	EPL	Environmental Representative/s
SSI 7400 (C2S) SSI 8256 (S2B)	Sydney Metro Retained Obligations (SM) /Other	Not applicable	██████████
Key Construction and other Activities			
SM	<ul style="list-style-type: none"> City metro services started passenger operations on Monday 19 August 2024. Chatswood remediation works (by RMA) continuing. It is understood that SM has submitted updated Operational Environmental Management Plans for Main Operations to DPHI on 16 August 2024. 		
ER Inspections			
	<ul style="list-style-type: none"> One ER inspection was undertaken related to Chatswood Remediation Works on 20/08/2024. Action raised regarding ERSED controls at the site driveway. 		
Endorsed Document/s			
SM	<ul style="list-style-type: none"> Minor works application for Temporary Cycle Link (TCL) Marrickville to Sydenham (approved 29/8/24) OOHWA#1 for TCL endorsed by ER (28/8/2024) 		
Non-compliance/ Incidents or Repeat Complaints			
<p>Since commencement of City metro services passenger operations on Monday 19 August 2024, Sydney Metro is now providing summaries of CSW complaints on a weekly basis (was provided daily until 16 August 2024) to DPHI and ERs covering complaints related to remaining construction works. Key or repeat items of note are discussed below for the respective projects, where applicable or under respective CSW packages.</p> <ul style="list-style-type: none"> No incidents were reported to the ER during the reporting period. Nil non-compliances reported to the ER during the reporting period. ER is aware of two complaints during the reporting period as summarised below: <ul style="list-style-type: none"> 12/08/2024 – Chatswood Dive – stakeholder complained about loud noise from train testing. It is understood that this complaint is still under investigation from SM and SM has arranged attended monitoring at the resident’s property and the report is still pending. 22/08/2024 – Chatswood Dive Site Remediation works - stakeholder complained about noise during daytime disturbing sleep (shift worker). 			
Audits			
SM	Nil		
Looking Forward – Core Focus Areas			
SM	<ul style="list-style-type: none"> Chatswood remediation works by RMA ongoing. SMRO CTR Q3-Q4 2023. This monthly DPHI report will continue to be streamlined as work packages for CSW complete or are of very low risk – as identified in respective CSW packages, this month. ERs are seeking further clarification from SM on residual works that remain, post-operation. Future reporting will be by exception, dependant on scope of works being undertaken and relevance. 		



9. Errant and Hostile Vehicle Mitigation Treatments (EHVMT)

Project Approval	Contract Package	EPL	Environmental Representative/s
SSI 8256 (S2B)	Errant and Hostile Vehicle Mitigation Treatments (EHVMT)	N/A	[REDACTED]
Key Construction Activities - During the Period			
<ul style="list-style-type: none"> ▪ CEMP and Subplan preparation by Contractor, ER/SM reviews completed and council consultation underway. ▪ Minor Works related to utility investigations at various locations during standard construction hours and out-of-hours. ▪ Geotech investigations at Wiley Park Station (12/08) 			
Key Construction Activities Look Ahead			
<ul style="list-style-type: none"> ▪ Site investigations using bore holes at various locations during standard construction hours 			
ER Inspections			
<ul style="list-style-type: none"> ▪ ER inspections are undertaken based on scope/risk levels of the activities. No ER inspection undertaken during August 2024 reporting period. 			
Endorsed Document/s			
<ul style="list-style-type: none"> ▪ CIRA – OOHW#8 ▪ EHVMT – CEMP and Subplans Rev B ▪ EHVMT – Construction Monitoring Program Rev B ▪ EHVMT – Utilities Management Strategy Rev B 			
Non-compliance/ Incidents or Repeat Complaints			
<p>Since commencement of City metro services passenger operations on Monday 19 August 2024, Sydney Metro is now providing summaries of CSW complaints on a weekly basis (was provided daily until 16 August 2024) to DPHI and ERs covering complaints related to remaining construction works. Complaints are discussed where relevant for each package below.</p>			
<ul style="list-style-type: none"> ▪ There were no non-compliances reported to the ER during the reporting period. ▪ There were no incidents reported to the ER under Condition A36 of SSI 8256. ▪ There were no Class 3 environmental incidents reported to the ER during the reporting period. ▪ No complaints were received during the reporting period. 			
Audits			
No ER involvement in audit activity including Independent Environmental Audits.			
Looking Forward – Core Focus Areas			
<ul style="list-style-type: none"> ▪ Management of ERSED controls generally ▪ Management of noise and dust during OOH Works ▪ CEMP and sub-plan consultation (underway), with commencement of construction anticipated in Q3 2024 			



10. Statement of Limitations

Healthy Buildings International (HBI) has prepared this report in accordance with the requirements of Condition A24(l) of the Sydney Metro Conditions of Approval (CSSI 15_7400) and Condition A26(j) of the Sydney Metro Conditions of Approval (CSSI 17_8256). The report is for the sole purposes of Department of Planning, Housing and Infrastructure (DPHI) and Sydney Metro. It has been prepared based on generally accepted practices and standards at the time it was prepared. No other warranty, expressed or implied, is made as to the professional advice included in this Report. This report did not assess any aspects relating to safety.

Where the Report indicates that information has been provided to HBI by third parties, HBI assumes no liability for any inaccuracies in or omissions to that information.

This Report was prepared based on the conditions encountered and information reviewed for the period of reporting. HBI disclaims responsibility for any changes that may have occurred after this time.

This Report should be read in full. No responsibility is accepted for use of any part of this report in any other context or for any other purpose or by third parties. This Report does not purport to give legal advice. Legal advice can only be given by qualified legal practitioners.

Except as required by law, no third party may use or rely on this Report unless otherwise agreed by HBI in writing. Except as specifically stated in this section, HBI does not authorise the use or findings of this Report by any third party.

To the extent permitted by law, HBI expressly disclaims and excludes liability for any loss, damage, cost or expenses suffered by any third party relating to or resulting from the use of, or reliance on, any information contained in this Report. HBI does not admit that any action, liability, or claim may exist or be available to any third party.