

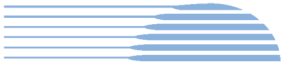


Table of Contents

1. Advanced and Enabling Works (AEW)	3
2. Station Boxes and Tunnelling (SBT)	6
3. Surface and Civil Alignment Works (SCAW)	11
4. Stations, Systems, Trains, Operations and Maintenance Package (SSTOM)	15
5. Statement of Limitations	19

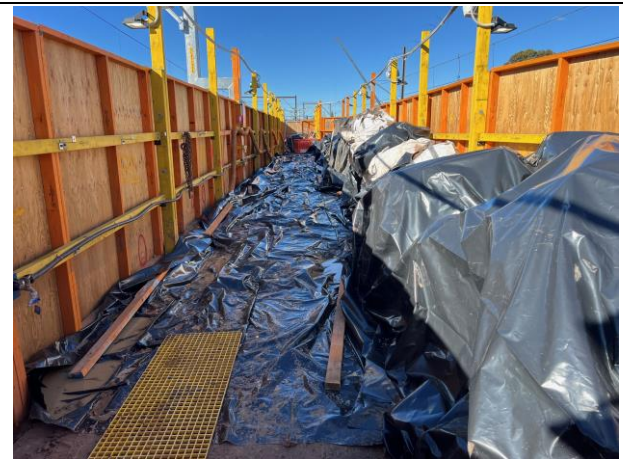
1. Advanced and Enabling Works (AEW)

Contract Package	Environmental Representative/s
Advanced and Enabling Works (AEW)	[REDACTED]
Key Construction Activities During the Period	
<ul style="list-style-type: none"> ▪ St Marys Footbridge (FSM): <ul style="list-style-type: none"> ○ Piling works have recommenced on platforms 1/2 and 3/4 ○ Stockpiling material in the main compound ○ Concrete pours into piles ○ Designing water recycling strategy and treatment options 	
Key Construction Activities Look Ahead	
<p>The Construction activities planned for the upcoming period for the Advanced Enabling Works (AEW) comprise of:</p> <ul style="list-style-type: none"> ▪ St Marys Footbridge: <ul style="list-style-type: none"> ○ Continuation of piling works ○ Material loadout ○ Preparation for possessions on weekends 8 and 9 ○ Development of a strategy to recycle water from the platforms for reuse in construction activities 	
ER Inspections	
<p>There were three (3) inspections of the St Marys Station Footbridge contract undertaken by Mr [REDACTED] in July 2024.</p> <p>Key points/ issues raised during the inspections were as follows:</p> <ul style="list-style-type: none"> ○ Following the pause in construction activities the site was in good condition ○ Concrete pours have been well controlled with controls effective in preventing spills ○ Concrete is stockpiled and will be sent to recyclers ○ The plastic used to seal up the exposed areas on platforms 1/2 and 3/4 can be recycled and will be tracked ○ The project has been proactive in cleaning and / or reinstating controls 	
Photos	
St Marys Footbridge	
	
<p>Compound - The concrete washout has been effective in handling waste concrete and is cleaned out regularly</p>	<p>Compound - Waste concrete has been stockpiled awaiting removal to concrete recyclers</p>



Compound - The FSM Briefing Board is updated to reflect the current works and the environment controls required

Platform 3/4 - Additional ballast has been placed to facilitate the arrival of Hydrema for WE8 and WE9 works



Platform 3/4 – Piling works were undertaken on the platforms with noise blankets and hoardings to reduce noise

Platform3/4 - Whilst the works were paused, a plastic protection layer was installed over the piles to minimise water ingress and discharge

Endorsed Document/s

The following documents were endorsed/approved by the ER ([REDACTED]):

- Nil this period

The following documents were provided for information or reviewed with comments provided to Sydney Metro:

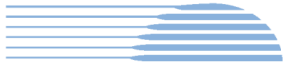
- Weekend 08 (WE08), 24 August – 26 August 2024 & Weekend 12 (WE12), 21 September – 23 September 2024 OOHW Application rev 00 12/07/24

Complaints / Incidents / Non-compliance

No non-compliances were reported to or identified by the ER for the period.

No incidents were reported to the ER in June2024:

No complaints were received during the period.



Audits (specific to packages reported in this report)
Nil this period
Looking Forward – Core Focus Areas
<p>Construction has resumed following a two week pause. Controls were effective and monitored daily during this period. The project is planning for works to occur on possessions on weekends 8 and 9 (24-25/08/24 and 31-1/08-09/24. As a result piling is occurring on the platforms down to approximately 1 metre depth to identify as may unexpected finds as possible prior to works commencing during the possessions.</p> <p>ER Closing Comments:</p> <p>The ER is reminding the project team of timeframes around submission of approvals to prevent delays in submission and allow DPHI their requested review timeframes. The HVLR is going through its final reviews prior to submission to DPHI. Issues that will need to be managed and monitored closely during the upcoming works include:</p> <ul style="list-style-type: none">▪ Mud tracking▪ Noise▪ Heritage impacts▪ Interaction with members of the community▪ Dust



2. Station Boxes and Tunnelling (SBT)

Contract Package	Environmental Representative/s
Station Boxes and Tunnelling (SBT)	[REDACTED]
Key Construction Activities During the Period	
<ul style="list-style-type: none"> ▪ St Marys: <ul style="list-style-type: none"> ○ TBM retrieval activities and transport offsite completed ○ TBI reinstatement activities ○ TBM retrieval infrastructure demobilisation ▪ Claremont Meadows Services Facility: <ul style="list-style-type: none"> ○ Water treatment plant operating. ○ Storage of surplus construction materials from other northern sites ○ Cross passage ramp soil storage and delivery ○ Concrete deliveries to tunnel for invert works and shotcreting ▪ Orchard Hills: <ul style="list-style-type: none"> ○ Site topsoil/spoil storage and characterisation sampling in preparation for haulage offsite. ○ Operation and maintenance of ERSED controls. ○ Tunnel support gantry and spoil shed demolition ○ TBM launch support slab demolition completed ○ Tunnel portal construction, including rock bolt /anchor drilling and FRP, in station box ○ Concrete deliveries to tunnel portal ○ Water treatment plant operation and disposal to trade waste at Claremont Meadows. ○ Demobilisation of plant and equipment from laydown areas ▪ Aerotropolis: <ul style="list-style-type: none"> ○ TBM 3 and 4 disassembly/retrieval and transport offsite completed ○ TBM retrieval infrastructure demobilisation and concrete works at tunnel portal ▪ Bringelly Services Facility: <ul style="list-style-type: none"> ○ Storage of surplus construction materials from other southern sites. ○ Cross passage ramp soil delivery and removal. ○ Concrete deliveries to tunnel ○ FRP activities for concrete slab over loading/unloading area west of shaft 	
Key Construction Activities Look Ahead	
<ul style="list-style-type: none"> ▪ St Marys: <ul style="list-style-type: none"> ○ Tower crane demobilisation ○ TBI reinstatement activities ○ Site demobilisation and hand-over to PLM mid-August – Amenities and DGB Pad on Station St to remain ▪ Claremont Meadows Services Facility: <ul style="list-style-type: none"> ○ Continue erosion and sediment controls operation and maintenance. ○ Continue Water Treatment Plant operation and maintenance. ○ Storage of surplus construction materials from other northern sites. 	



- Concrete deliveries for cross passage and invert construction, including outside Construction Hours.
- Orchard Hills:
 - Disposal of surplus topsoil/spoil stockpile offsite.
 - Portal works
 - Site demobilisation
 - Earthworks and drainage for handover to SSTOM
- Aerotropolis:
 - Tower crane demobilisation
 - Site demobilisation and hand-over to PLM late August
- Bringelly Services Facility:
 - Continue Erosion sediment controls operation and maintenance.
 - Tunnelling support activities (concrete deliveries and cross passage spoil removal).

ER Inspections

There were two (2) routine ER Inspections conducted on 4/7/24 and 18/7/24 by Mr [REDACTED] and Mr [REDACTED] respectively. One Out of Hours Works (OOHW) Inspection was conducted at St Marys on 18/7/24 targeting TBM offsite transport.

Key points/ issues raised during the inspections were as follows:

- Most actions from previous inspections have been closed.
- Sites were generally well managed with only routine minor maintenance/repairs and housekeeping were required throughout.
- At Bringelly, despite use of a street sweeper, some improvement to the condition of the sealed internal haul roads, commencement of concreting to cover the laydown/loading area, and wheel washing, some tracking continued be noted onto Derwent Rd. CPBG is covering the laydown/loading area with concrete and will then be removing the remaining soil accumulations from sealed internal haul roads, which will rectify the situation.
- Due to the increased frequency of concrete deliveries, concrete washout management processes have emerged as an area where procedures and education require some tightening.
- OOHW TBM retrieval activities were generally consistent with the HVLR and CTMP for the works, and were well managed from a transport and noise management perspective and consistent with the DNVIS. Where an inconsistency with the HVLR was noted it's implementation resulted in improved environmental outcomes from a noise and property impact perspective.

ER inspections are on a fortnightly cycle.

Photos



Orchard Hills – Characterisation of eastern topsoil/spoil stockpile



Kent road at site access – Negligible tracking.



Orchard Hills tunnel portal – TBM launch slab demolition.



Orchard Hills Northern boundary– Concrete washout management improvements required.



Orchard Hills south view north – Spoil management infrastructure demolition and shed removal.



Claremont Meadows view south to shaft – Concrete washout management improvements required.



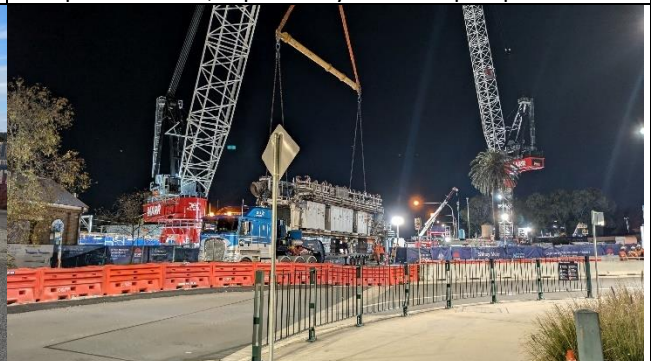
Claremont Meadows south, view to HV exit – Internal haul road in good condition.



Claremont Meadows view northwest – Drop pipe at ramp abandoned, replaced by concrete pumps.



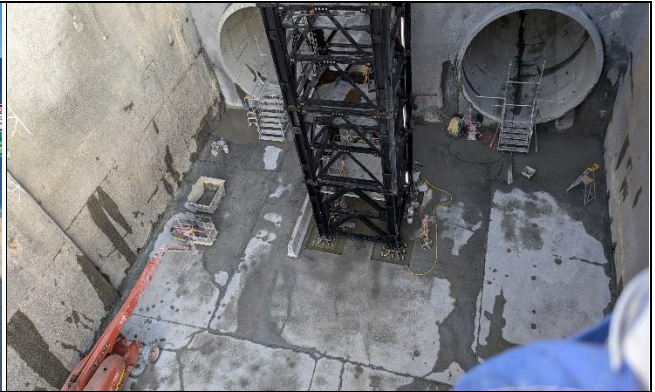
Claremont Meadows – Some tracking noted on Gipps Rd. at southern site access.



St Marys view east– OOH TBM gantry lift on Station Street.



St Marys view south from Gidley St at Philip St – Negligible tracking observed from Gidley St access.



St Marys – TBM retrieval completed.



St Marys Station St view east – TBM precast support blocks ready for transport offsite.



St Marys south side of Station St view east– Erosion and sediment control measures in good condition.



Bringelly – Condition of sealed internal haul roads improved.



Bringelly – Tracking noted at Derwent Rd exit.



Bringelly view east to shaft– FRP underway for concrete slab over loading/unloading area.



Aerotropolis view east – Concrete delivery.



<p>Aerotropolis view south of east side of station box– Demobilisation awaiting crane slab removal.</p>	<p>Aerotropolis Station Box north– TBM retrieval finished with concrete delivery to portal. SSTOM FRP right</p>
--	--

Endorsed Document/s

No documents were endorsed/approved by the ER.

The following documents were provided for information or review as applicable:

- June Monthly Monitoring Reports comprising Dust (real-time), Noise and Surface Water.
- CEMP Revision 5 dated 20/06/24

Complaints / Incidents / Non-compliance

There were no Non-Compliances with the Approval raised by or reported to the ER this period
There were no incidents of note identified by or reported to the ER this period.

Eleven complaints were reported to the ER, an increase from the previous month:

- One (1) from St Marys related to noise.
- Four (4), from Orchard Hills, related to noise.
- One (1) from Orchard Hills, related to worker behaviour.
- One (1) from Orchard Hills, related to electromagnetic interference.
- One (1) from Orchard Hills, related to vehicle damage.
- Two (2) from Bringelly related to air quality (dust) / street sweeper use.
- One (1) from Bringelly related to light pollution.

The complaints above are under investigation or review by Sydney Metro and CPBG, as detailed in the register.

Audits (specific to packages reported in this report)

- Nil this period

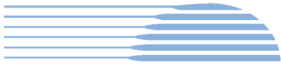
Looking Forward – Core Focus Areas

Risks now relate to tunnel support activities at Bringelly, and Claremont Meadows. Of note are:

- OOH noise management at Bringelly for concrete pumping activities into shaft
- OOH noise management at Claremont for concrete pumping activities into shaft (drop pipe abandoned)

ER Closing Comments:

The contractor continues to apply good environmental management practices and is proactive in planning of works to limit environmental impacts.



3. Surface and Civil Alignment Works (SCAW)

Contract Package	Environmental Representative/s
Surface and Civil Alignment Works (SCAW)	[REDACTED]
Key Construction Activities During the Period	
<ul style="list-style-type: none"> ▪ Patons Lane: <ul style="list-style-type: none"> ○ Sandstone import over northern tributary stream culvert is complete, finishing works continue ○ Weed spraying continuing ○ Hydromulching activities are ongoing ▪ SMF: <ul style="list-style-type: none"> ○ Additional geotechnical unsuitable material is being added to PS105 ○ Borg dam finishing works ▪ Defence Land: <ul style="list-style-type: none"> ○ Drainage works ongoing ○ Fill placement towards the Warragamba pipeline ○ Viaduct segments are being installed on the viaduct over the Warragamba pipeline ▪ Luddenham Station: <ul style="list-style-type: none"> ○ Construction of Luddenham Rd roundabout is complete ○ Structural station works continue. ○ Preparation for viaduct segments between and over the Warragamba pipeline ▪ Luddenham Road South: <ul style="list-style-type: none"> ○ Area is in caretaker period, to be handed over to SSTOM August 2024 ○ M12 to Cosgrove’s Creek ▪ Elizabeth Drive: <ul style="list-style-type: none"> ○ Topsoiling and hydromulching continues ○ Works are occurring underneath the M12 bridge 	
Key Construction Activities Look Ahead	
<ul style="list-style-type: none"> ▪ Patons Lane: <ul style="list-style-type: none"> ○ Finalising rehabilitation works ○ Completion of drainage lines ▪ Stabling and Maintenance Facility (SMF) Orchard Hills: <ul style="list-style-type: none"> ○ Rehabilitation works ongoing ○ Geotechnically unsuitable material will continue to be added to PS105 ▪ Defence Land: <ul style="list-style-type: none"> ○ Finishing works ongoing ○ Viaduct segment placement to be completed ▪ Luddenham Station: <ul style="list-style-type: none"> ○ Rehabilitation of disturbed areas 	



- Viaduct segment placement to occur south of the Warragamba pipelines
- Luddenham Road South:
 - Area is in caretaker period to be handed over to SSTOM in August 2024
- M12 to Cosgroves Creek:
 - Area is in caretaker period, to be handed over to SSTOM August 2024
- Elizabeth Drive:
 - Filling and earthworks continuing
 - Topsoiling and hydromulching
 - Permanent alignment drainage works ongoing

ER Inspections

There were two (2) ER Inspections conducted on 11/07/24 and 25/07/24 by Mr [REDACTED]

Key points/issues raised during these inspections were as follows:

- Areas north and south of Cosgrove’s Creek are now in caretaker mode and will be handed over to SSTOM in August 2024
- Blaxlands Creek catchment has been topsoiled and hydromulched, these works have been undertaken well.
- As other areas near completion, ERSED controls need to remain until the catchment is fully stabilised.
- There are some areas that were reworked and left unconsolidated, ER requested that these areas be stabilised ASAP and monitored.
- Some cross drainage structures had minor levels of debris in them, ER requested this material to be removed
- The project continues to source the majority of water from sediment basins as opposed to potable sources. This is being tracked in the sustainability report.

ER inspections are on a fortnightly cycle weather and health permitting.

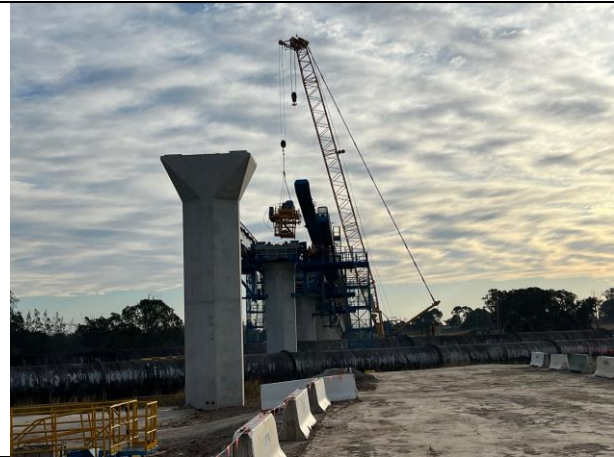
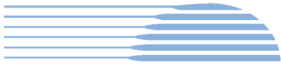
Photos



M12 Bridge - All water captured under the M12 bridge drains to the sediment basin adjacent to the bridge



M 12 Bridge - The catchment leading to the basin has been sprayed with hydromulch



Luddenham North – Lifting activities over the Warragamba pipelines have been carefully planned



Luddenham North – The viaduct gantry crosses the Warragamba pipelines



Defence - The downstream cross drainage structure is in generally good condition, however the coir logs required adjustment



Defence - The viaduct is being constructed from the Defence site, over the Warragamba pipelines, towards Luddenham north



SMF - The 12ML basin is in good condition, both SCAW and SSTOM intend to discharge water at the licenced discharge point



Blaxland's Creek – The catchment has been topsoiled and was due to be hydromulched the day following the ER inspection



Lansdowne Rd - The access track is nearing completion and the drainage structures have been installed

Luddenham South - The northern and southern sides of Cosgrove's Creek are in caretaker mode and will be handed over to SSTOM in August 2024.

Endorsed Document/s

The following documents were endorsed/approved by the ER:

- Nil this period

The following documents were provided for information or reviewed:

- Nil this period

Complaints / Incidents / Non-compliance

There were no Non-Compliances with the Approval raised by or reported to the ER this period

There were no incidents of note identified by or reported to the ER this period.

There were no complaints reported to the ER this period

Audits (specific to packages reported in this report)

- Nil this period

Looking Forward – Core Focus Areas

The project is finalising areas, with the sites north and south of Cosgrove's Creek now in the caretaker period. The sites that still remain under SCAW's control still require management and monitoring to ensure compliance is achieved.

ER Closing Comments: Project leadership has been good on this project and will need to be maintained during this period of completion and handover. Risks that are prevalent to the works include:

- Dust
- Mud tracking
- Stabilisation failure
- Resourcing



4. Stations, Systems, Trains, Operations and Maintenance Package (SSTOM)

Contract Package	Environmental Representative/s
Stations, Systems, Trains, Operations and Maintenance Package (SSTOM).	
Key Construction Activities During the Period	
<ul style="list-style-type: none"> ▪ St Mary’s Station (STM): <ul style="list-style-type: none"> ○ Waterproofing is ongoing. ○ Concrete base and wall pours are ongoing. ▪ Orchard Hills Station (ORH): <ul style="list-style-type: none"> ○ Pile break back completed ○ Station box base slab commenced ○ Waterproofing ongoing ○ Sump construction in the box ongoing ○ Concrete batch plant base slabs are ongoing, ○ Construction of batch plant ongoing ○ New light vehicle entrance from Lansdowne Road commenced ▪ Stabling and Maintenance Facility (SMF): <ul style="list-style-type: none"> ○ Deliveries ongoing from Western Tunnelling Package (Metro West) for pad fill mostly completed ○ Substation earthworks ongoing ○ Permanent stormwater drainage ongoing ○ Connection of 132kv power ongoing ○ Weed spraying commenced ▪ Luddenham Station (LUD): <ul style="list-style-type: none"> ○ Detailed excavation of station ongoing ○ Extension of light vehicle car park commenced ▪ Bradfield Station (Aerotropolis Core AEC): <ul style="list-style-type: none"> ○ Pile break-back completed ○ Base slab pours commenced 	
Key Construction Activities Look Ahead	
<ul style="list-style-type: none"> ▪ St Mary’s Station: <ul style="list-style-type: none"> ○ Slab pours ongoing, likely to utilise out of hours for larger pours ○ Tower crane 2 erection to occur (likely in September) ○ Waterproofing ongoing ▪ Orchard Hills Station: <ul style="list-style-type: none"> ○ Box sump and drainage works ○ Batch plant construction (expected to be completed early September) ○ Waterproofing and base slab pours continue ▪ Stabling and Maintenance Facility: 	



- Ongoing importation of material to continue (expected to be completed end of September).
- Connection of 132kv power to continue.
- Additional area for stockpiling. (SCAW handover to SSTOM)
- Permanent stormwater drainage to continue
- Luddenham Station
 - Car park extended and resurfaced (expected end August)
 - Reduction of swale drain had occurred
 - Shipping container footbridge installed
 - Detailed excavation of the station area ongoing
 - Pile break-back to occur end of August
- Bradfield Station (Aerotropolis Core):
 - Realignment of drains, Parklife Metro (PLM) is investigating fast-tracking permanent stormwater drainage installation
 - AEC discharge pipeline
 - Earthworks to commence
- Linewide
 - Handover late August

ER Inspections

There were three ER Inspections conducted on 02/07/24, 19/07/2024 and 30/07/24 by Mr [REDACTED].

Key points/issues raised during these inspections were as follows:

- Sites continue to generally hold up well, completion of internal drainage issues and installation of erosion controls were raised with PLM.
- Weed maintenance commenced and discussions with PLM regarding the onboarding of the contractor for Linewide work have been raised as a potential issue.
- STM – noise mitigation for the tower crane was ongoing. It was noted that an arrangement was in place with TC1 to have a shroud installed (likely 4-6 weeks) and TC 2 will be installed before setup.
- STM – minor graffiti removal was required from hoarding.
- ORH - The turkey nest and sumps were being managed through tanking water to the STM water treatment plant for disposal via trade waste or via overland pumping to the EPL discharge dam.
- ORH - Maintenance of ESC and removal of sediment were being implemented, although the finalisation of actions was pending completion. PLM reminded that actions are not to commence rectification but to complete rectification works.
- ORH –concrete batch plant – Maintenance of rumble grid was required.
- ORH – pothole repairs were occurring on Kent road
- ORH – PLM testing battery pack to reduce the use of compound generator
- SMF – Tie in works with SUMP overflow to SCAW-controlled area continued. A MOI is in place between contractors and a discharge pipeline has been discussed.
- AEC –erosion controls from upstream water impacts were installed to direct water around stockpile areas.



Photos	
	
STM – View of south side of box and cranes operating. Location where Tower Crane 2 expected to be erected.	STM – minor graffiti removal was required.
	
ORH – Trial of the battery pack to reduce use of generator	ORH – PLM repairing pothole on Kent Road
	
ORH – Concrete batch plant – Maintenance of rumble grid was required.	ORH – Maintenance of ESC and removal of sediment from internal swale was ongoing
	
SMF – Trenching for the 132 kV feeder	SMF – Drainage works continued



LUD – Earthworks and reduction in swale drain had occurred.

AEC – Construction of the sump and preparation for slabs

Endorsed Document/s

The following documents were endorsed/approved by the ER:

The following documents were provided for information or reviewed with comments provided to Sydney Metro:

- SMWSA SSTOM Submissions Board, Submissions Forecast & ICD Submissions Board - July 2024
- Noise and Vibration Construction Monitoring Report - 4 August 2023 to 3 February 2024
- Groundwater Monitoring Plan Rev 01 V02 (to be resubmitted pending SBT updates)
- Soil and Water Management Sub-Plan - Rev 02.03
- E57 Bradfield extended concrete works •

Complaints / Incidents / Non-compliance

There were no Non-Compliances with the Approval raised by or reported to the ER this period

There were no incidents of note identified by or reported to the ER this period.

The following complaints were reported to the ER during the period:

- ORH – Queries were raised concerning re-zoning. It was noted that these queries are outside of Sydney Metro’s scope.
- AER – One complaint regarding OOH noise that was not associated with STTOM activities.

It is noted that PLM has been working with the Council and continues to repair potholes on Kent Road.

Audits (specific to packages reported in this report)

- Nil this period

Looking Forward – Core Focus Areas

The focus continues to be the implementation of the CEMP and sub-plans, with a particular focus on erosion and sediment controls and sediment tracking with the heightened risk from ongoing rain events. Linewise handover is expected during August and the alignment split between North and South for alternating weekly ER inspections.

ER Closing Comments: A change in Environmental Manager for PLM will be monitored during August. Senior site staff in place to keep day by day running of activities under check and have been preparing for the August audit.

Key risks are ERSED maintenance within the project boundary and noise impacts from OOH work

5. Statement of Limitations

Healthy Buildings International (HBI) has prepared this report in accordance with the requirements of Condition A32 (k) of the Sydney Metro Western Sydney Airport, Concept and Stage 1 SSI 10051 Approval (23 July 2021). The report is for the sole purposes of the Department of Planning, Housing and Infrastructure (DPHI) and Sydney Metro. It has been prepared based on generally accepted practices and standards at the time it was prepared. No other warranty, expressed or implied, is made as to the professional advice included in this Report. This report did not assess any aspects relating to safety.

Where the Report indicates that information has been provided to HBI by third parties, HBI assumes no liability for any inaccuracies in or omissions to that information.

This Report was prepared based on the conditions encountered and information reviewed at this time. HBI disclaims responsibility for any changes that may have occurred after this time.

This Report should be read in full. No responsibility is accepted for use of any part of this report in any other context or for any other purpose or by third parties. This Report does not purport to give legal advice. Legal advice can only be given by qualified legal practitioners.

Except as required by law, no third party may use or rely on this Report unless otherwise agreed by HBI in writing. Except as specifically stated in this section, HBI does not authorise the use or findings of this Report by any third party

To the extent permitted by law, HBI expressly disclaims and excludes liability for any loss, damage, cost or expenses suffered by any third party relating to or resulting from the use of, or reliance on, any information contained in this Report. HBI does not admit that any action, liability or claim may exist or be available to any third party.