

Notification – Waterloo Station

June 2024

Sydney Metro is Australia's biggest public transport project.

Services started in May 2019 in the city's North West with a train every four minutes in the peak. Metro rail will be extended into the CBD in 2024, with new metro railway stations at Crows Nest, Victoria Cross, Barangaroo, Martin Place, Gadigal and Waterloo and new metro platforms at Central, and then onto Bankstown in 2025.

The new Waterloo integrated station development includes construction of the new Waterloo metro station by John Holland, while a joint venture between John Holland and Mirvac will deliver the Waterloo Metro Quarter, including buildings above and next to the station.

Weekend road closure on Raglan Street

A full road closure on Raglan Street, between Botany Road and Cooper Street will commence on **7.00pm, Friday 14 June 2024 until 5.00am Monday 17 June 2024.**

This road closure is required to complete water upgrade works and civil works on Raglan Street for the new intersection. These works include the preparation and construction of a new water culvert, rain gardens, kerbs, wheelchair ramps, sidewalks, traffic control signal conduit installation and planter boxes.

Please refer to the map over the page for more information on the changes and parking removal.

What to expect

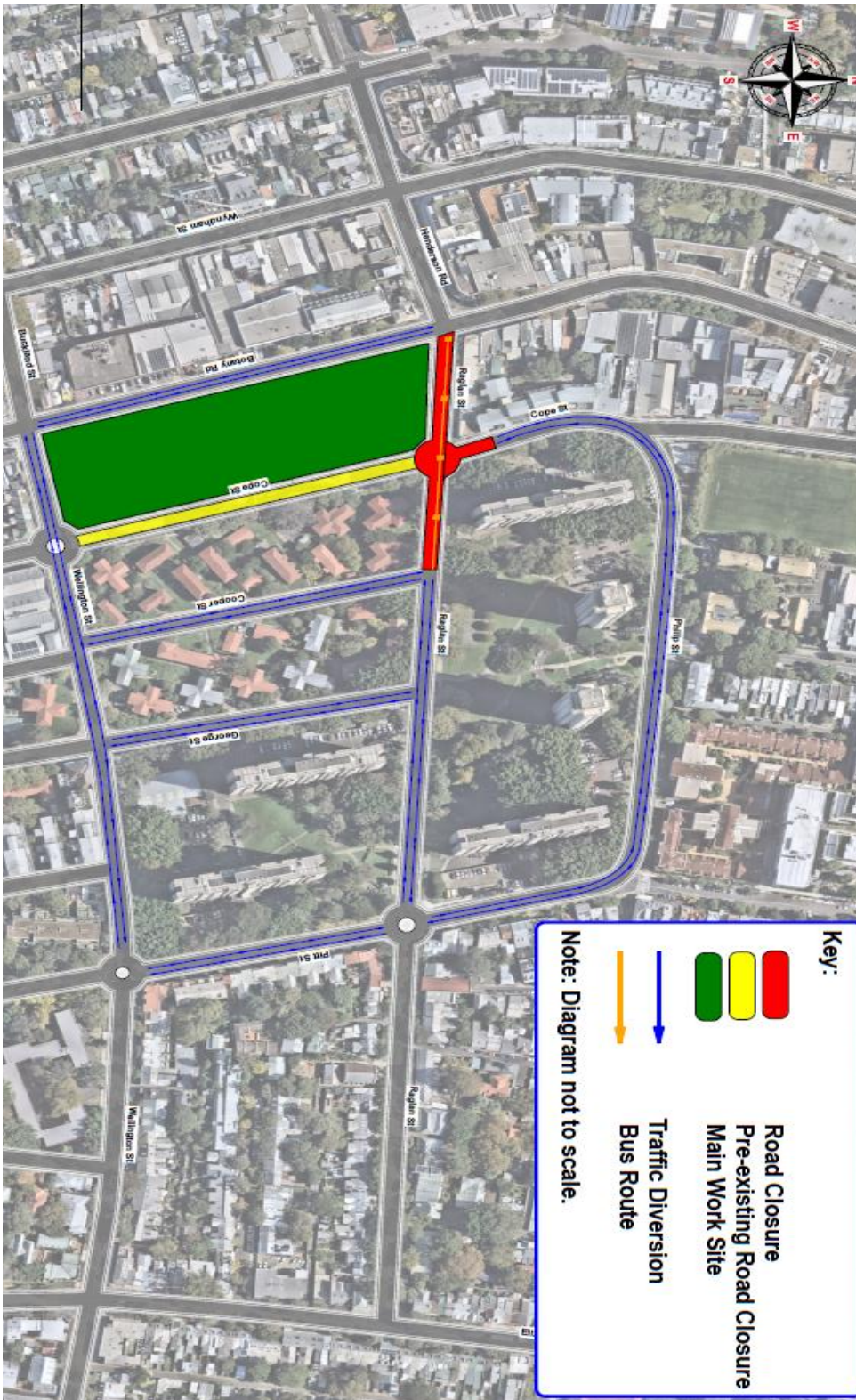
- Machinery used during this work will include a rollers, concrete trucks, excavators, trucks and construction vehicles, generators, concrete saw, lighting towers, hand, and power tools.
- Temporary traffic changes will be in place for the safety of workers and the community during this work, including reduced speed limits, footpath and lane closures.
- Due to the nature of the work, nearby residents may hear noise and feel vibration from some of the work. The project team will limit these impacts wherever possible. A range of mitigation measures are in place including, turning off equipment when not in use and, where possible, equipping machinery with non-tonal movement alarms. For high impact work such as hammering, there will also be respite periods of one hour following three hours of work.

If you have any questions, please contact Leanna Fuller on 1800 171 386 or email waterloometro@transport.nsw.gov.au


Thank you for your patience while we undertake these necessary works.




Detour Map



Contact us

 24-hour Community Information Line **1800 171 386**

 **sydneymetro@transport.nsw.gov.au**

 Sydney Metro City & Southwest, PO Box K659,
Haymarket NSW 1240



Translating and interpreting service

If you need help understanding this information, please contact the Translating and Interpreting Service on **131 450** and ask them to call us on **1800 171 386**