

# Project update – Barangaroo Station

July 2024

## Sydney Metro is Australia’s biggest public transport project

Services started in May 2019 in the city’s North West, with a train every four minutes in the peak. Metro rail will be extended into the CBD in 2024, with new CBD metro railway stations at Crows Nest, Victoria Cross, Barangaroo, Martin Place, Gadigal and Waterloo and new metro platforms at Central and then onto Bankstown in 2025.

BESIX Watpac is building Barangaroo Station, including the station fit-out, associated landscaping and civil works, and the realignment of Hickson Road.

Systems Connect (an unincorporated joint venture between CPB Contractors and UGL Limited) is delivering line-wide work, which includes installing metro rail track, power systems, communications, and infrastructure to turn the excavated tunnels into a working railway between Chatswood and Sydenham.

The Trains, Systems, Operations & Maintenance (TSOM) group is delivering the communication and signalling systems, and the platform screen door installation.

## Barangaroo Station – upcoming work

**On Tuesday 2 July, the last 24/7 single lane on Hickson Road will be removed, after which both north and southbound lanes will be opened in their permanent alignments.** Contingency dates are Wednesday 3 and Thursday 4 July.

In July, we expect to finish all installations in the main precinct around the station entrances on the western side of Hickson Road and will test and commission all services.

Work to build the facades of the ventilation pods along the eastern side of Hickson Road will continue, including the installation of metal cladding. Construction of the kerb and pavement for the new bicycle path will continue, as will work to render the heritage wall under High Street.

We expect to hand over the station precinct to the west of Hickson Road to Infrastructure NSW (iNSW) and the City of Sydney in July. The lift and escalator entrances will be cordoned off using hoarding until the City and Southwest metro line is open.

Underground, the station box has been handed over to the operator, MTS, who will get the station ready for the opening of the City and Southwest metro line soon.

For any prolonged noisy work at the surface, respite periods will occur on weekdays from 9.30 am – 10.30 am and 12.30 pm – 1.30 pm. On Saturdays, work will commence at 8 am and end at either 1 pm without respite periods or 6 pm with respite periods, in line with the weekday arrangements.

In addition to the respite hours, the team will use the available methods to reduce noise impacts on the local community, including:

- limiting the use of multiple pieces of loud machinery at the same time and location, where feasible.
- turning off equipment when not in use.
- using non-tonal reversing alarms on all equipment.
- installing temporary noise blankets around noise sources, where feasible.
- and operating equipment on the lowest effective vibration setting, where feasible.

The table below provides more information about the activities, weather and site conditions permitting.

Location	Activities during standard construction hours
Hickson Road (between Windmill Street Bridge and High Steps) and the public domain around Nawi Cove and at Headland Park	<ul style="list-style-type: none"> <li>• <b>The 24/7 single lane will be in place until overnight on Tuesday 2 July. From 5am Wednesday 3 July, it will be removed, and the road will be open in both directions on its permanent alignment.</b></li> <li>• Minor stormwater pipe works will continue at the western corner of Nawi Cove. This work will extend the hoarding onto the turfed area close to Wulugul Walk as marked on the map.</li> <li>• Finalising the landscaping in the area in front of the Cutaway.</li> <li>• In late June/early July, we expect to switch pedestrians to the new permanent paving south of the 25 Hickson Road car park.</li> <li>• Cleaning of the new precinct paving, footpaths, and amenities such as furniture in the area in front of the Cutaway.</li> <li>• Continuing kerb and pavements for the bike lane on the eastern side of Hickson Road under Dalgety Bridge.</li> <li>• Installation of a new electrical distribution board near Towns Place. This may require a minor pedestrian diversion in the area (if not completed in June).</li> <li>• Continuing to render the heritage wall under High Street, where required, using mobile plant and /or from scaffold. This work is being undertaken per heritage guidelines and will not generate noise.</li> <li>• Commence the installation of metal work to the façade around the ventilation pods along the heritage wall under High Street.</li> <li>• Handing over the public domain areas to their asset owners (iNSW/City of Sydney). This includes removing hoarding and water-filled barriers requiring a single lane on Hickson Road during standard construction hours.</li> <li>• Handing the station entrances (lift and escalator) to the station operator, MTR.</li> <li>• Delivering building materials and equipment for the station and tunnels.</li> </ul>
Inside the station box and tunnels	<ul style="list-style-type: none"> <li>• Testing and commissioning of station equipment rooms.</li> <li>• Dynamic train testing through the tunnels.</li> <li>• Testing and commissioning of electrical services, including track, power, and communications and signalling equipment and systems.</li> <li>• Testing and commissioning of the platform screen doors and field communications equipment.</li> </ul>

**Location**                      **Out-of-hours work activities**

Specific details on all out-of-hours work occurring at the surface are provided via specific notifications and in our weekly e-news.

Between High Steps and Towns Place

- On Tuesday, 2 July, Hickson Road will be closed overnight between Barton Road and Towns Place to pack down a 24/7 single lane. Following the out-of-hours on 2 July, the road will be open in both directions on its final alignment. Contingency dates are Wednesday 3 and Thursday 4 July.

**Location**

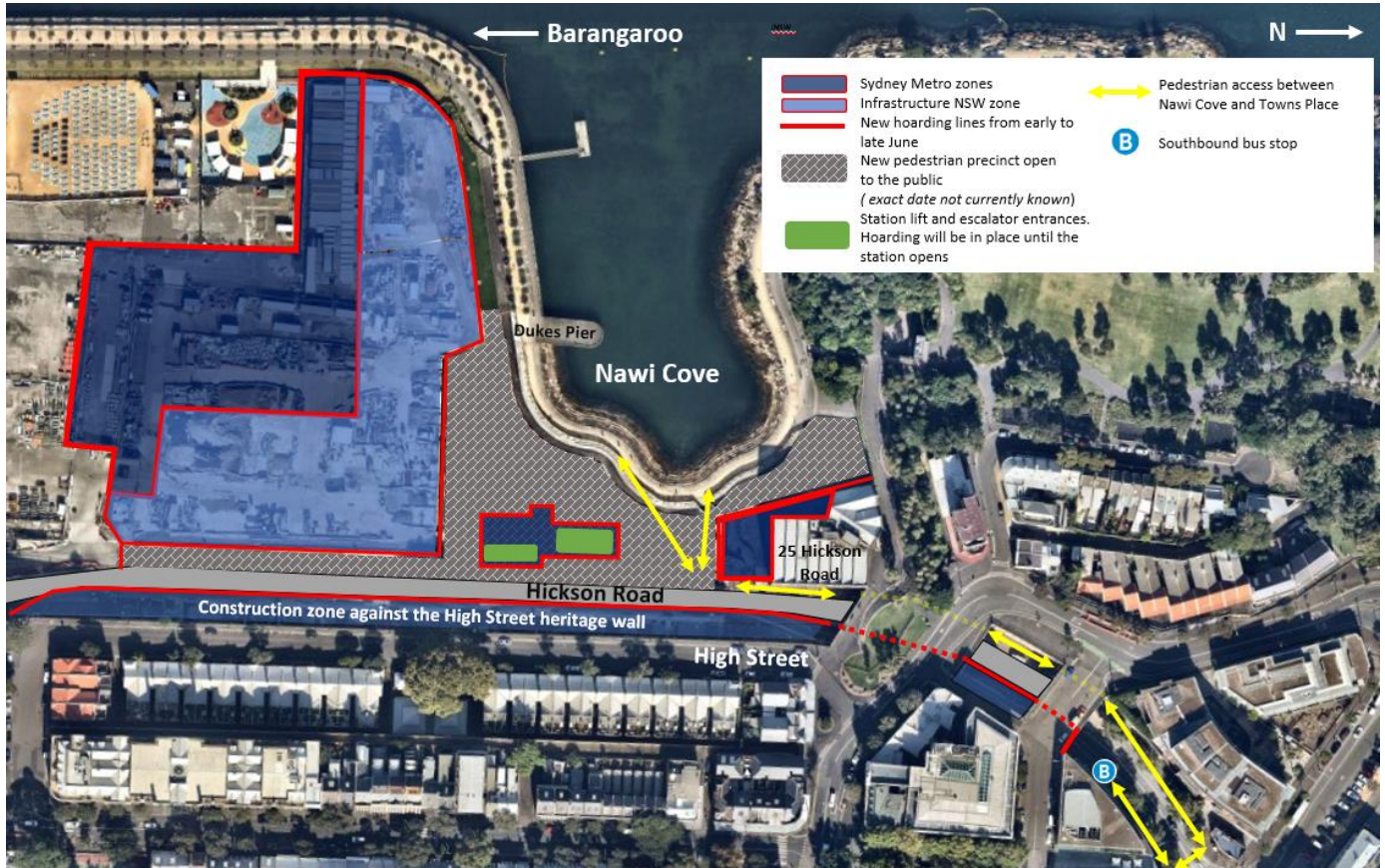
Inside the station box and tunnels

- Out-of-hours work activities**
- 24/7 access to tunnels (as required).
- Testing, maintenance, and commissioning for mechanical and electrical services, including power, communications and signalling equipment and services, ventilation systems and dynamic train testing through the tunnels.

### Barangaroo Station work area until the western precinct is handed over



## Barangaroo Station work area after handover of the western precinct to iNSW and the City of Sydney



### No pedestrian access along the heritage wall below High Street during construction

Pedestrian access on Hickson Road along the heritage wall remains closed during the construction of Barangaroo Station. Alternative access is available via the High Steps, Wulugul Walk or Kent Street for those requiring an accessible route (via lifts from Hickson Road at Barangaroo to Kent Street, and lifts at Headland Park).

For maps of out-of-hours work, please refer to the specific notifications in the ‘**Construction updates**’ tab at <https://www.sydneymetro.info/station/barangaroo-station>.

### Thank you for your patience while we complete this essential work

If you are affected by our construction, and have any questions or complaints, please contact the BESIX Watpac Community Engagement Team on **1800 171 386** (24-hour community information line) or email [barangaroometrostation@transport.nsw.gov.au](mailto:barangaroometrostation@transport.nsw.gov.au). You can subscribe to receive this monthly notification and weekly updates by email at: [www.sydneymetro.info/station/barangaroo-station](http://www.sydneymetro.info/station/barangaroo-station).

 **1800 171 386** Community information line open 24 hours

 [sydneymetro@transport.nsw.gov.au](mailto:sydneymetro@transport.nsw.gov.au)

 Sydney Metro City & Southwest, PO Box K659, Haymarket NSW 1240

 If you need an interpreter, contact TIS National on **131 450** and ask them to call **1800 171 386**