

Tunnelling monthly update

25 March 2024

Sydney Metro is Australia's biggest public transport project.

The NSW Government is delivering Sydney Metro West – a new underground metro railway which will double rail capacity between Parramatta and the Sydney CBD, link new communities to rail services and support employment growth and housing supply.

Gamuda Australia and Laing O'Rourke Consortium (GLC) has been awarded the contract to deliver nine kilometres of twin metro rail tunnels between Westmead and Sydney Olympic Park, excavation for two new metro stations, a stabling and maintenance facility at Clyde and a precast facility at Eastern Creek.

Tunnelling update – April 2024

Roadheader tunnelling is continuing at Clyde to excavate two underground connecting tunnels for Sydney Metro West. These tunnels will connect the twin metro tunnels to the Clyde stabling and maintenance facility.

Tunnelling has progressed west of James Ruse Drive and will continue along the alignment toward Hassall Street. We anticipate working in this area over the next four weeks excavating the junction caverns and support work including lining the tunnels and junction caverns, see map overleaf.

Excavation of the junction caverns will occur in phases. The first construction phase to shape and cut the roof of the junction cavern is now complete. The second construction phase to excavate the cavern floor is continuing. The third construction phase involves support work including lining of the junction caverns is due to commence in mid April.

Machinery and equipment will enter the temporary access shaft at Clyde, located within an acoustic shed adjacent to James Ruse Drive. Spoil (excavated material) will also be removed from this location.

Tunnelling activities will be carried out 24 hours a day, seven days a week.

What to expect

Residents near the tunnel alignment may experience temporary ground-borne noise and vibration as the roadheaders progress through the area. The levels of noise and vibration will vary depending on the ground conditions, depth of the tunnel, time of day, background noise levels, and type of building. The duration of these impacts will depend on the location of your property along the tunnel alignment.

To view your property in relation to the tunnel alignment, visit Sydney Metro's interactive map portal at: www.caportal.com.au/tfnsw/sydmetrowest/map

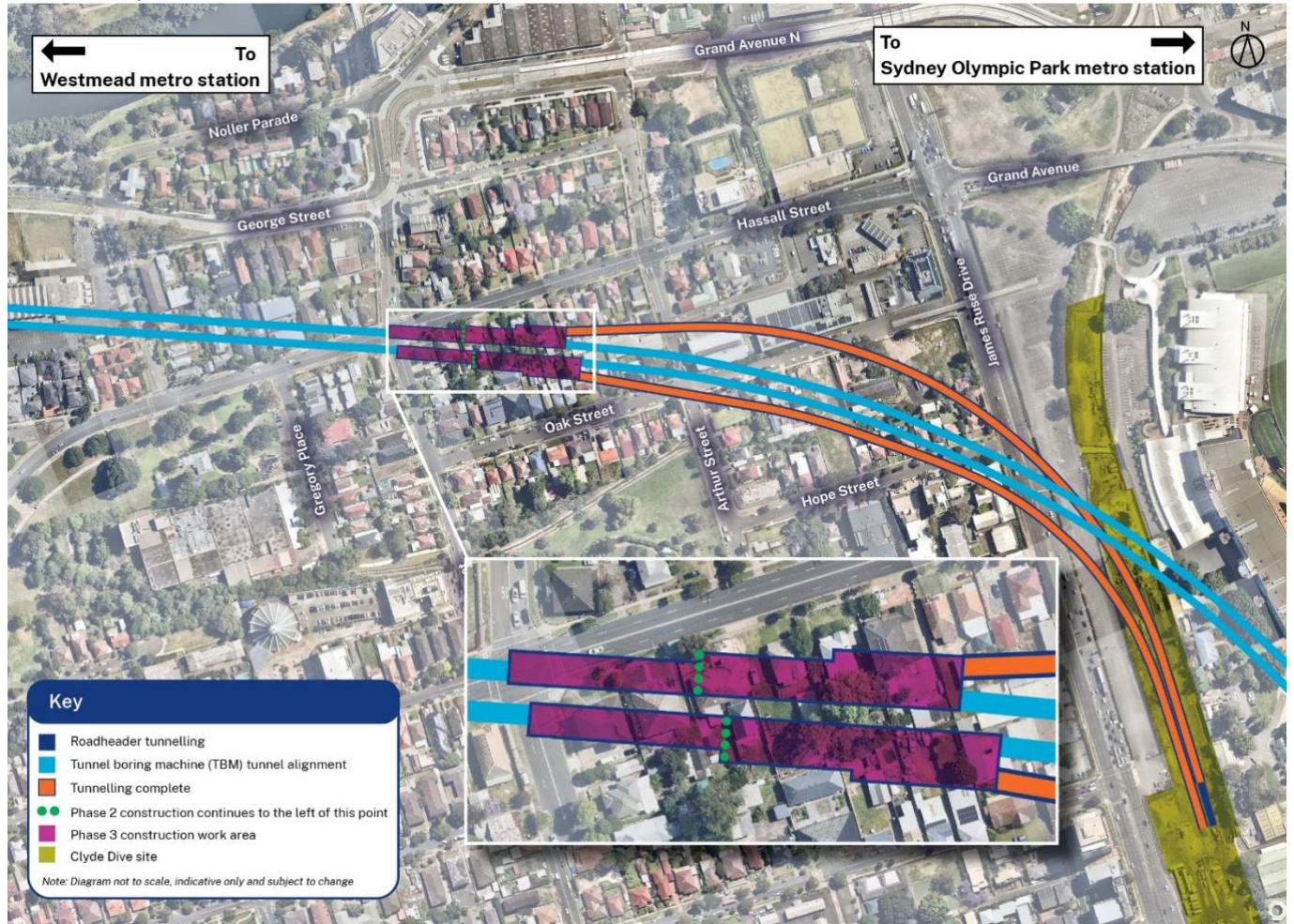
Noise and vibration levels will be regularly monitored during construction and managed in accordance with approvals and environmental requirements.

To sign up to our distribution list for email updates, scan the QR code and fill in the online form.



Tunnel alignment

This is a map of the work area. For more information call 1800 612 173.



Contact us

Please contact GLC's Community team on **1800 612 173** or by email if you have any questions, complaints or would like to provide feedback about the work, including appropriate respite periods. We will continue to keep you updated on the progress of work in your area.

If you would prefer to receive updates by email, please send a request to metrotunnelsGLC@transport.nsw.gov.au and we will add you to the distribution list.

Thank you for your cooperation while we complete these essential works.

1800 612 173 Community information line open 24 hours
metrotunnelsGLC@transport.nsw.gov.au
Sydney Metro West, PO Box K659, Haymarket NSW 1240



Access information in over
100 languages

Download **Sydney Metro Connect** from
the App Store or get it on Google Play.



If you need help understanding this information, please contact the Translating and Interpreting Service
on **131 450** and ask them to call us on **1800 612 173**