

Mr Rob Sherry
Team Leader Compliance – Government Projects
Department of Planning and Environment
Locked Bag 5022
PARRAMATTA NSW 2124

7 October 2023

Ref:201208-ER_DPE-October 2023

Dear Rob

RE: Sydney Metro - Sydney Metro West SSI - ER Monthly Report for October 2023

Healthy Buildings International (HBI) submits this report to the Secretary in accordance with:

- Condition A30 (k) of the Sydney Metro West, Concept and Stage 1 SSI 10038 Approval (11 March 2021), and associated modifications (MOD 1 - 28 July 2021, MOD 2 - 3 June 2022, MOD3 – 4 July 2022 and MOD4 - 23 December 2022); and
- Condition A32(k) of the Sydney Metro West – The Bays to Sydney CBD SSI 19238057 Approval (24 August 2022).

The attached summary details the key activities undertaken by Environmental Representatives for Sydney Metro – Sydney Metro West for the month of October 2023.

Yours sincerely



Greg Byrnes
Environmental Representative

Cc:

Sydney Metro: Matthew Marrinan, John Lerokis, Pamela Tummers, Andrew Hendy, Cath Snelgrove, Ari Stypel, Ben Armstrong, Sarah Kemp
Contractors: Jared Lipton (AFJV), Steph Mifsud (GLC), Sally Reynolds (JCG)
DPE: Major Projects Portal

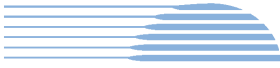


Table of Contents

1	Phase B - Central Tunnelling Package	4
1.1	Key Construction Activities During the Period	4
1.2	Key Construction Activities Look Ahead	5
1.3	ER Inspections	5
1.3.1	Photos	6
1.4	Endorsed Document/s	7
1.5	Complaints	7
1.6	Compliance	8
1.6.1	Incidents	8
1.6.2	Non-compliance and Potential Non Compliance	8
1.6.3	Audits	8
1.7	Looking Forward – Core Focus Areas	8
2	Phase F – Western Tunnelling Package	9
2.1	Key Construction Activities During the Period	9
2.2	Key Construction Activities Look Ahead	10
2.3	ER Inspections	10
2.3.1	Photos	11
2.4	Endorsed Documents	12
2.5	Complaints	13
2.6	Compliance	13
2.6.1	Incidents	13
2.6.2	Non-compliance	13
2.6.3	Audits	13
2.7	Looking Forward – Core Focus Areas	13
3	Phase G - Eastern Tunnel Package	14
3.4	Endorsed document/s	17
3.5	Complaints	17
3.6	Compliance	17
3.6.1	Incidents	17
3.6.2	Non-compliance	17
3.6.3	Audits	17
3.7	Looking Forward – Core Focus Areas	17
4	PHASE H - Westmead Telstra and Jemena Gas Relocation	18
4.1	Key Construction Related Activities During the Period	18
4.1	Key Construction Activities Look Ahead	18



4.2	ER Inspections	18
4.2.1	Photos	18
4.3	Endorsed Document/s.....	18
4.4	Complaints	18
4.1	Compliance.....	18
4.1.1	Incidents.....	18
4.1.2	Non-compliance.....	19
4.1.3	Audits	19
4.2	Looking Forward – Core Focus Areas	19
5	Sydney Metro Retained Obligations and Other Activity	20
5.1	Key Construction Activities During the Period	20
5.2	Key Construction Activities Look Ahead.....	20
5.3	ER Inspections	20
5.3.1	Photos	20
5.4	Endorsed Document/s.....	20
5.5	Complaints	20
5.6	Compliance.....	20
5.6.1	Incidents.....	20
5.6.2	Non-compliance.....	20
5.6.3	Audits	20
5.7	Looking Forward – Core Focus Areas	21
6	Statement of Limitations.....	22
7	Appendix A – ER Document Endorsement Records (ETP only).....	23



1 PHASE B - CENTRAL TUNNELLING PACKAGE

The Environmental Representatives for Phase B of Sydney Metro West are:

- Michael Woolley
- Greg Byrnes
- Jo Robertson

Phase B – Central Tunnelling Package (CTP) is being delivered by Acciona Ferrovia Joint Venture (AFJV). Phase B of Sydney Metro West has been further broken into:

- Phase B1: Civil works
- Phase B2: Tunnelling works

The AFJV hold EPL 21610 for this Phase of works. Activities defined as Phase B2-Tunneling Works in the Staging Report for Metro West commenced during the November 2022 reporting period at Burwood North.

1.1 Key Construction Activities During the Period

The Bays

- Ongoing operation of two TBMs including support activities such as the grout plant; deliveries of segments (24/7); works inside the acoustic shed.
- Ongoing construction of cross passages.
- Use of conveyor system to remove spoil from the TBMs into the spoil shed. Storage of spoil in the shed and load out of trucks within the shed.
- Ongoing operation of the Construction Water Treatment Plant; site office facilities; and works shops.

Five Dock

- West shaft: Ongoing excavation of rock from the shaft using excavators with hammers for walls and surface miner for the base. Access to the central cavern opened full width. Load out of material by trucks during standard construction hours.
- Ongoing excavation of the western cavern from the western wall of the shaft using a road header. Support for this work including operation of a scrubber and related ventilation system in the base of the excavation. This activity is only conducted during standard construction hours.
- East Shaft: Commencement of Form, Reo Pour (FRP) works for the nozzles. Loading of trucks with spoil using either a telescopic excavator or kibble on the gantry crane. Storage of some spoil inside the acoustic shed for later load out on trucks. Ongoing use of a house on Waterview Street adjacent the eastern shaft for project offices. Ongoing ventilation from the shed from scrubbers in the cavern after relocation of the vents to the roof. Repairs made to roof vents after windy conditions. Ongoing works inside the Central Cavern including excavation with the surface minor and excavators and wall support.
- Operation of the Water Treatment Plant at the east site.

Burwood North

- Completion of FRP for the base of the Cross Over cavern. Preparation for concrete lining of the roof using roof lining formwork.
- Ongoing excavation of the station box, including stockpiling and load out off site. During large concrete pours, load out of trucks is stopped. Wall support, including rock anchor installation.



- Trucks are entering site through acoustic shed from Parramatta Road with load out point adjacent to Parramatta Road outside the shed.
- Ongoing Nozzle excavation on the eastern face of the station box. This has involved set up of a temporary brattice cover at the south end of the station box and set up and operation of a scrubber unit (daytime hours only).
- Operation of the Water Treatment Plant
- South Shaft: Ongoing bulk excavation from the shaft. Wall support including drilling and installing anchors as well as shotcrete. Use of truck turntable with truck access from Burwood Road.

North Strathfield

- Ongoing bulk excavation of station box with load out via the slip lane alongside Queen Street. Drilling and stressing of rock anchors; wall support with shotcrete. The excavation of the Station Box is being completed by dozer and rock hammers around the walls.

Sydney Olympic Park

- Concrete pours for blinding layer on the base of parts of the station box after completion of excavation. Other works in the station box includes drilling, installing and testing rock anchors and shotcreting of walls.
- Removal of spoil from the station box and load out of spoil using truck and dogs
- Completion of remedial works undertaken after movement of a section of the station box wall was detected. This involved ongoing placement of spoil against the base of the affected wall and installation of new anchors; whaler beams; and concrete infills. Spoil has since been removed.
- Works to excavate and construct nozzle sections at western and eastern ends of the station box. Use of concrete pumping area in the eastern end of the station box for this work.
- Preparation of the site for handover to the Western Tunnelling Package including pavement replacement.
- Use of site exit including weighbridge and wheel wash (as deemed to be required) to Figtree Drive. Heavy vehicles entering from Herb Elliot Avenue.
- Project Office Operating.

1.2 Key Construction Activities Look Ahead

- Ongoing activities as described above.
- Various OOHWs (conducted under the EPL).
- Commencement of construction of the nozzles at North Strathfield.
- Ongoing FRP works at Five Dock as well as preparations for TBM arrival at Five Dock.

1.3 ER Inspections

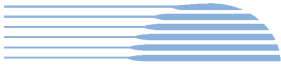
There were four ER inspections conducted on each Thursday during October 2023, with sites being inspected on an alternating basis, except for Five Dock which was inspected weekly. Key issues raised during the inspections included:

The Bays:

- Nil

Five Dock:

- Dust is a key issue for Five Dock and based on observations during inspections it is being managed well by the AFJV team with water sprinklers over the box and effective road cleaning



Burwood North:

- Remove graffiti on the hoarding
- Two ERSED and water management related actions

North Strathfield

- Dust is a key issue for North Strathfield and based on observations during inspections it being managed well by the AFJV team with water sprinklers over the box and effective road cleaning

Sydney Olympic Park

- Nil

The number of actions raised has continued to decrease when compared to previous months.

1.3.1 Photos



Figure 1 1 New pedestrian bridge over the Port Access Road (The Bays)



Figure 1 2 Water Treatment Plant (The Bays).



Figure 1 3 Cross Over Cavern: preparation for roof lining concrete pours (Burwood North).



Figure 1 4 Station Box excavation and nozzle works. (Burwood North)

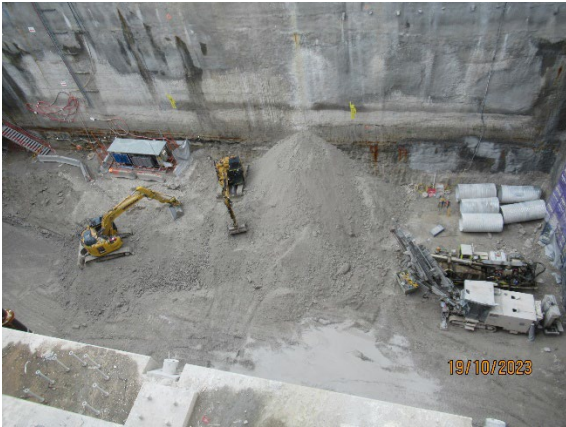


Figure 1 5 Spoil removal from the west shaft. (Five Dock-west).



Figure 1 6 Works in the base of the East Shaft (Five Dock-east).



Figure 1.7 Excavation of spoil using steel platforms; wall support. (North Strathfield)



Figure 1.8 Load out of spoil from the Station Box (SOP). Construction of nozzles and blinding concrete in the western end.

1.4 Endorsed Document/s

AFJV completed an annual review of various management plans resulting in minor amendments to some plans. The following plans were endorsed during the reporting period:

- Groundwater Management Plan and Monitoring Program (Rev 5)
- Air Quality Management Plan (Rev 5)
- Flora and Fauna Management Plan (Rev 7)
- Spoil Management Plan (Rev 8)

1.5 Complaints

Based on a monthly Sydney Metro Complaint Register provided for October 2023, there were 12 complaints reported during the month, with one of the reported complaints identified as not related to AFJV activities.

Five project related complaints were received for ground born noise and vibration from tunnelling works.

Two of the project related complaints were from the Five Dock site and related to: dust (1) and noise (1) during truck loading in the evening. The complaint regarding the truck loading in the evening will be further investigated by the ER.

Four complaints were received at Burwood North relating to: Concrete truck stopping on Lansdowne Street (1) this led to an NCR see section 1.6.2, noise (1) and loss of parking and access to business (2).



No complaints were received at the Bays or SOP during the reporting period.

1.6 Compliance

1.6.1 Incidents

One incident was reported by AFJV by email relating to discharge from the WTP at the Bays to the licenced discharge point. AFJV indicated that a potential incident was under investigation and that a formal incident report would be provided following completion of the investigation.

AFJV also reported incidents under the Sydney Metro Incident Management Procedure for minor water discharge at SOP and a small, contained oil spill at the Bays.

1.6.2 Non-compliance and Potential Non Compliance

Two Non-Compliance Reports were provided to the ER during the reporting period as follows:

- NCR 030: AFJV reported that on nominated days in May and June, truck numbers exceeded the CTMP approved numbers during peak periods and that AFJV became aware of the non-compliance when reviewing data on 10 October 2023.
- On 27 October 2023, a complaint was received by the AFJV place manager from a resident who stated a concrete agitator truck was parked on Lansdowne Street in front of their driveway. Lansdowne Street is not part of the approved haul route in the Burwood North Construction Traffic Management Plan. Therefore, a non-compliance was issued. Note, the VMP with the haul routes is supplied to Holcim with the placement of the order for every concrete pour and AFJV confirm it was issued for the pour in question.

1.6.3 Audits

A draft report for the third Independent Environmental Audit on the Sydney Metro West, Concept and Stage 1 SSI 10038 Approval was issued during the reporting period.

1.7 Looking Forward – Core Focus Areas

- Dust generation at all sites during dry weather
- Dirt Tracking onto roads from all sites
- Noise and Vibration management at Five Dock and Burwood North
- Traffic Management at Five Dock.



2 PHASE F – WESTERN TUNNELLING PACKAGE

The Environmental Representatives for Phase F of Sydney Metro West are:

- Greg Byrnes
- Swathi Gowda
- Mike Woolley

Phase F – Western Tunnelling Package (WTP) is being delivered by Gamuda Australia Laing O’Rourke Consortium (GLC).

GLC are constructing this Phase of Sydney metro West under EPL 21676.

2.1 Key Construction Activities During the Period

During October, construction activities continued at all WTP sites, including the excavation of the Clyde Dive, station box at Westmead, and Diaphragm Wall construction at Parramatta. Both TBMs continue tunnel excavation at Rosehill. The following activities were undertaken at the Westmead, Parramatta, Rosehill, Clyde Dive and Clyde MSF sites during October 2023:

Westmead

- Acoustic shed construction was completed in October 2023
- Station box excavation, rock bolts and shotcrete.
- Spoil from the Station Box excavation is being removed via kibble and gantry crane inside the acoustic shed.
- The excavated material is pre classified and is being loaded out during day works.
- Water Treatment Plant commissioning
- Road Header excavation at the eastern end of the Station Box (24hrs/5days)

Parramatta

- Bentonite Plant operation
- Diaphragm wall (D-Wall) excavation with two cutters and one Grab with spoil being transferred to MSF
- The D-Wall construction is undertaken outside standard construction hours
- Water Treatment Plant commissioning
- Footpath reinstatement and paving works along Macquarie Street was completed in October 2023
- Guide wall removal has commenced in areas where the D-Wall has been completed.
- The removal of the concrete pad over the eastern half of the station box has commenced.

Clyde Dive

- Horizontal tunnelling with Road header from the tunnel shaft. The road headers are now under receivers on the west side of James Ruse Drive
- Horizontal tunnelling with Road header from the tunnel shaft towards the Dive excavation commenced in October 2023.
- Spoil management including transfer to the Clyde MSF site by Moxey and crossing Unwin Street
- Clyde dive excavation, shotcreting and soil nail drilling. Dozer, Rock hammer and excavator are now being used. Spoil (ASS) going to MSF East for treatment and placement in Speedway

Rosehill



- TBM 1 and 2 continue to tunnel excavation with spoil being transferred to the spoil shed. The spoil conveyor will be operational in November 2023
- Long term water treatment plant is operational and receiving water from Clyde Dive and Clyde MSF. WTP waste is being stockpiled on site
- Segment delivery is continuing and the segment shed is being constructed
- Hytek infrastructure demolition, this includes an underground basement
- Spoil management from the Hytek demolition and Water Treatment Plant waste

Clyde MSF

- Water main and utilities trenching adjacent to the M4 and along Duck Creek
- Unwin Street diversion construction including piling and bridge works
- Road diversion and flood detention civil works adjacent to the RTA Facade. Flood detention spoil is ASS and Asbestos contaminated.
- Duck Creek low flow diversion channel excavation and rock armour placement.
- Spoil management including stockpiling, segregation, classification and movement around site. This includes Acid Sulfate soil treatment
- Earthworks, including back filling of the Parramatta Speedway site
- Multiple Unexpected hydrocarbon finds including three USTs at 2 Kay street.

2.2 Key Construction Activities Look Ahead

The key construction activities planned for November 2023 are similar to those listed in Section 3.1 With the addition of the following:

- TBM 1 and 2 tunnel excavation
- Westmead Water Treatment Plant commissioning
- Temporary diversion A'Becketts Creek via coffer dams and pumps to allow for the preparation of the long term creek diversion
- Unexpected underground fuel tank investigation and remediation

2.3 ER Inspections

Four ER inspections were conducted in October 2023 (4/10/2023, 11/10/2023, 18/10/2023 and 25/10/2023). A total of 161 mm (Parramatta BOM) of rain fell during October 2023, compared to a monthly average of 62.5 mm. In total five actions were raised across the WTP in October. The actions and key issues raised at the inspections were:

- **Rosehill** – The Rosehill site is being managed well with focus on spoil management. However, two actions were raised, one for stormwater pit controls and one for GSW and ASS spoil stockpiles segregation.
- **Clyde MSF** - This site currently presents the highest environmental risk for GLC with sediment controls and spoil management being the key focus area for this site. During an ER inspection, three actions were raised for inadequate gate controls to manage mud tracking, stormwater pit control maintenance and inadequate erosion and sediment controls during the excavation of Duck Creek.
- **Parramatta** – The Parramatta site is being managed well with no actions raised. The excavation of the D-Wall presents an elevated risk for GLC and remains a key focus area for this site.
- **Westmead** – The Westmead site is being managed well with no actions raised. Noise and vibration outside standard construction hours present an elevated risk for GLC and remains a key focus area for this site.
- **Clyde Dive** – This site is being managed well with one action raised. The noise and dust associated with the Clyde Dive excavation presents an elevated risk and remains a key focus area for this site.



2.3.1 Photos



Figure 2.1: Westmead Site –air compressor with additional mitigation measures



Figure 2.2: Westmead site – Station Box excavation inside acoustic shed



Figure 2.3: Parramatta Site – D-Wall excavation with grab loading Moxy



Figure 2.4: Parramatta site – Bentonite Plant de-sander material stockpile



Figure 2.5: Clyde Dive site –Dive Structure excavation along the ATC boundary



Figure 2.6: Clyde Dive site – Exit/Entrance



Figure 2.7: Rosehill Site – Water Treatment Plant



Figure 2.10: Rosehill Site – GSW and ASS stockpiles not segregated



Figure 2.11: Clyde MSF Site – Duck Creek High Flow diversion excavation



Figure 2.12: Clyde MSF Site – Duck Creek diversion construction with rock armour



Figure 2.13: Clyde MSF Site – Parramatta Speedway backfilling



Figure 2.14: Clyde MSF Site – Utilities trench installation along Duck Creek

2.4 Endorsed Documents

No documents were endorsed by the ER during the reporting period.



2.5 Complaints

Five complaints were provided to the ER during October 2023, with one not related to the WTP. These complaints are summarised below:

- **Westmead** – Two complaints: The (23/10/2023) complaint related to OSOM plant demobilisation. The (27/10/2023) complaint related to dust coming from the site. Following an investigation, it was found that all dust generating activities were being undertaken inside the acoustic shed and dust mitigation measures were in place.
- **Parramatta** – One complaint: The (25/10/2023) complaint was for trucks parking on Lansdowne Street in Parramatta prior to arriving on site. The ER has requested further information from GLC on this complaint
- **Project Wide**- The (15/10/2023) complaint was for dissatisfaction with engagement during request to install survey prism within property.

2.6 Compliance

2.6.1 Incidents

No incidents considered to represent Incidents as defined under the Project Approval were reported to or observed by the ER during the reporting period.

2.6.2 Non-compliance

One Non-Compliance Report (NCRs) was issued by the Contractor during the reporting period. This non-conformance was identified by the ER and raised because of a failure to issue the Surface Water Monitoring Report and Noise and Vibration Monitoring Report for the monitoring period 19 January to 19 July 2023 to the Planning Secretary within 40 business days, in accordance with the respective Monitoring Programs. This results in a non-conformance against CoA C22.

2.6.3 Audits

No non compliances were reported by GLC or Sydney Metro for the reporting period and none were observed by the ER.

2.7 Looking Forward – Core Focus Areas

GLC are managing their environmental risk and compliance adequately. Work outside the standard construction hours is being completed at Rosehill, Parramatta and Westmead. All WTP sites have a high number of truck movements and need to continue to keep the haul roads clean and gate wheel cleaning, especially following rain. The environmental risk of the WTP is decreasing due to a portion of the works moving more underground and inside Acoustic sheds.

The core focus areas for the coming month are:

- The number of unexpected contamination finds has increased with three underground storage tanks (USTs) and a hot spot with stained and odorous soil being identified. To avoid rework and further investigation the ER will focus on ensuring CoA D78 is implemented
- GLC continue to move a large amount of spoil off site and between sites, mud tracking on public roads has been a project risk and will continue to be a focus area for the ER.
- The diversion of Duck and A'Becketts Creek has commenced. This work involves creating a new low flow channel linked with rock and backfilling the original creek alignment. The ER will focus on ensuring the works are completed in accordance with the Flora and Fauna management Plan and Soil and Water Management Plan.



3 PHASE G - EASTERN TUNNEL PACKAGE

The Sydney Metro West Eastern Tunnel Package is Stage 2 of the Sydney Metro West CSSI and is described as major civil construction works between The Bays and Sydney CBD, including station excavation at Pyrmont and Hunter Street and tunnel excavation between the Bays and Hunter Street. Stage 2 (SSI 19238057) was approved on the 24 August 2022.

The Environmental Representatives for the Sydney Metro West Eastern Tunnel Package are:

- Michael Woolley
- Greg Byrnes
- Jo Robertson

The Eastern Tunnelling Package (ETP) is being delivered by John Holland CPB Ghella Joint Venture (JCG) with the contract being awarded in November 2022. Sydney Metro notified DPE that the date of commencement of construction was 17 March 2023. JCG have received Environmental Protection Licence (EPL 21784) for the project.

3.1 Key Construction Related Activities During the Period

Works conducted during the reporting period included:

Project Wide:

- Pre-Construction Surveys
- Drilling of monitoring and geotechnical investigation boreholes
- CCTV investigations of sewer lines.

Pyrmont East:

- Preparation for and commencement of piling for supports for a raised steel platform
- Segregation and load out of wastes
- Stabilisation of boundary footpaths using mini piles; installation of hoarding around the site
- Removal of Underground Storage Tank and backfill of the area

Pyrmont West:

- Completion of hard demolition and commencement of the removal of concrete slabs
- Archaeological test excavations
- Installation of wall support such as rock bolts and anchors
- Ongoing sorting and load out of soft strip and demolition waste materials.

Hunter Street West:

- Hazardous Materials assessments and removal
- Ongoing soft strip of buildings to be demolished
- Ongoing preparation for hard demolition
- Ongoing installation of scaffolding along some parts of George and Hunter Streets
- Ongoing use of the basement load out zone for loading trucks and removal of soft strip wastes through driveway to Hunter Street.

Hunter Street East:

- Activities inside the Bligh Street acoustic shed including ongoing excavation of the station cavern and various adits; declines and ventilation shafts; stockpiling and load out of spoil. Use of air ventilation systems and other tunnelling support activities.
- Hazardous Materials assessments and removal
- Ongoing soft strip of buildings to be demolished
- Ongoing installation of scaffolding
- Ongoing works to support planned hard demolition activities including construction of columns to support some building elements

The Bays:



- Ongoing use of site offices
- Water treatment using the temporary WTP
- Ongoing works for the Construction WTP
- Construction of the spoil shed metal frame
- Ongoing construction of an HV kiosk to the west of the haul road in the vicinity of the WBPS including supervision/management/recording of heritage items identified by heritage consultants
- Excavation for a sewer connection adjacent the WBPS
- Installation of scaffolding in the station box to set up formwork to construct a concrete edge to the station box where there is no capping beam
- Set up of environmental controls.

3.2 Key Construction Activities Look Ahead

The following works are planned in November:

- Ongoing activities as described above as conducted for October
- Utility investigations and relocations
- Further site establishment works at all sites

3.3 ER Inspections

Three ER inspections were conducted during the reporting period on each Tuesday of October, except for the 3rd October due to it being a rostered day off. Two actions were raised during the month comprising:

- Installation of adequate ERSED controls at the Pyrmont West site adjacent Pyrmont Street
- Provision of secondary containment to fuels and chemicals in the basement at Hunter Street West

An observation was made in relation to noise from the cleaning of the auger on the piling rig at Pyrmont East. JCG were observed to be responsive to ER feedback during inspections and addressed action items promptly.



3.3.1 Photos



Figure 3.1 Pyrmont East: Commencement of piling works



Figure 3.2 Pyrmont East: Piling rig in operation



Figure 3.3 Pyrmont West: Test pits conducted for archaeological investigations



Figure 3.4 Pyrmont West: Works to install wall support around former basement



Figure 3.5 Hunter East: Road header excavation of the cavern ongoing



Figure 3.6 Hunter West: Ongoing soft strip; segregation and load out of wastes in the various buildings



Figure 3.7 The Bays: Frame being constructed for the Spoil Shed



Figure 3.8 The Bays: FRP for construction of the edge of the station box

3.4 Endorsed document/s

There were no documents endorsed by the ER during the reporting period.

In accordance with CoA A32(d)iii the written statements endorsing the above documents are provided in Appendix A (if relevant).

3.5 Complaints

Eight complaints related to the ETP were reported to the ER during October 2023. All eight complaints were from the Pyrmont site. Six complaints were for noise and vibration and two for air quality. Based on feedback provided by JCG, prompt responses to complaints has occurred.

3.6 Compliance

3.6.1 Incidents

No Incidents as defined under the Infrastructure Approval or under Sydney Metro/JCGs systems were reported to the ER during the reporting period.

3.6.2 Non-compliance

No non compliances were reported by JCG or Sydney Metro for the reporting period and none were observed by the ER.

3.6.3 Audits

There was no IEA or internal audits conducted during the reporting period.

3.7 Looking Forward – Core Focus Areas

In November 2023, the ER Team will be focused on:

- General monitoring of construction activities; including site establishment works at the Bays
- Noise and dust associated with the ongoing hard demolition activities at Pyrmont West and Pyrmont East
- Potential for tracking of dirt at the various demolition sites and at the Bays



4 PHASE H - WESTMEAD TELSTRA AND JEMENA GAS RELOCATION

The Sydney Metro West Phase H – Westmead Telstra and Jemna Gas Relocation involves the installation of new utility services around the new Sydney Metro Station at Westmead via Hawkesbury, Bailey and Hassell Streets.

The Environmental Representatives for the Sydney Metro West Eastern Tunnel Package are:

- Greg Byrnes
- Michael Woolley

The Sydney Metro West Phase H – Westmead Telstra and Jemna Gas Relocation is being delivered by Quickway with the contract being awarded in August 2023.

No EPL will be required for this phase of Sydney metro West.

4.1 Key Construction Related Activities During the Period

Low Impact Works commenced on the 26 October 2023. This included Investigative works approved by Sydney Metro, including excavating slit trenches and potholes to locate services and determine ground conditions, lifting service pits by non-mechanical means, mark out service locations, site clean-up and demobilisation.

4.1 Key Construction Activities Look Ahead

Investigation works will continue in early November then transitioning into conduit installation during days works in late November 2023.

4.2 ER Inspections

No ER inspections were completed during the reporting period.

4.2.1 Photos

None

4.3 Endorsed Document/s

The following documents were endorsed during the reporting period.

- Sydney Metro West – Westmead Utility Relocation Works: Noise and Vibration Management Plan (Revision 3) (4271-ENV-PLN-02 dated 17 October 2023).

4.4 Complaints

No complaints have been reported to the ER in relation to these works. However, a complaint received on the 27 October 2023 for noise during night hours allocated to WTP was most likely linked to the Westmead Telstra and Jemna Gas Relocation investigation works.

4.1 Compliance

4.1.1 Incidents

No incidents have been reported to the ER in relation to these works.



4.1.2 Non-compliance

No non-compliances have been reported to the ER or identified by the ER.

4.1.3 Audits

No audits were conducted during the reporting period.

4.2 Looking Forward – Core Focus Areas

The core focus areas for the coming month are:

- Work outside standard construction hours
- Interface with WTP



5 SYDNEY METRO RETAINED OBLIGATIONS AND OTHER ACTIVITY

The Environmental Representatives for the Sydney Metro Retained Obligations and other Activities are:

- Jo Robertson
- Greg Byrnes

The Sydney Metro Retained Obligations and other Activities is being delivered by Sydney Metro with various sub-contractors delivering the works. These works do not require an EPL.

5.1 Key Construction Activities During the Period

The ER is not aware for other Sydney Metro managed construction activities during the period.

5.2 Key Construction Activities Look Ahead

The ER is not aware for other Sydney Metro managed construction activities during the period.

5.3 ER Inspections

There were no ER inspections of this work during the reporting period.

5.3.1 Photos

None

5.4 Endorsed Document/s

No Sydney Metro documents were endorsed during the reporting period.

5.5 Complaints

No complaints have been reported to the ER in relation to the investigations previously conducted for Sydney Metro.

5.6 Compliance

5.6.1 Incidents

No incidents have been reported to the ER in relation to the investigations previously conducted for Sydney Metro.

5.6.2 Non-compliance

No non compliances have been reported to the ER in relation to the investigations previously conducted for Sydney Metro.

5.6.3 Audits

No audits were conducted during the reporting period.



5.7 Looking Forward – Core Focus Areas

A risk workshop is held monthly with the ERs and the Sydney Metro Environment team to discuss contractor performance, environmental risk and identify key focus areas for the upcoming month. This process is continuing.



6 STATEMENT OF LIMITATIONS

Healthy Buildings International (HBI) has prepared this report in accordance with the requirements of Condition A30(k) of the Sydney Metro West, Concept and Stage 1 SSI 10038 Approval (11 March 2021), and Condition A32(k) of the Sydney Metro West – The Bays to Sydney CBD SSI 19238057 Approval (24 August 2022).

The report is for the sole purposes of Department of Planning and Environment (DPE) and Sydney Metro. It has been prepared based on generally accepted practices and standards at the time it was prepared. No other warranty, expressed or implied, is made as to the professional advice included in this Report. This report did not assess any aspects relating to safety.

Where the Report indicates that information has been provided to HBI by third parties, HBI assumes no liability for any inaccuracies in or omissions to that information.

This Report was prepared based on the conditions encountered and information reviewed at this time. HBI disclaims responsibility for any changes that may have occurred after this time.

This Report should be read in full. No responsibility is accepted for use of any part of this report in any other context or for any other purpose or by third parties. This Report does not purport to give legal advice. Legal advice can only be given by qualified legal practitioners.

Except as required by law, no third party may use or rely on this Report unless otherwise agreed by HBI in writing. Except as specifically stated in this section, HBI does not authorise the use or findings of this Report by any third party

To the extent permitted by law, HBI expressly disclaims and excludes liability for any loss, damage, cost or expenses suffered by any third party relating to or resulting from the use of, or reliance on, any information contained in this Report. HBI does not admit that any action, liability or claim may exist or be available to any third party.



HBI Healthy Buildings International Pty Ltd

7 APPENDIX A – ER DOCUMENT ENDORSEMENT RECORDS (ETP ONLY)