

[REDACTED]
[REDACTED]
Department of Planning Industry and Environment
Locked Bag 5022
PARRAMATTA NSW 2124

[REDACTED]
Ref:201209-ER_DPE-November2023

Dear [REDACTED]

RE: Sydney Metro - Sydney Metro Western Sydney Airport SSI 10051 – ER Monthly Report for November2023

Healthy Buildings International (HBI) submits this report to the Secretary in accordance with:

- Condition A32 (k) of the Sydney Metro Western Sydney Airport, SSI 10051 Approval (23 July 2021)

The attached summary details the key activities undertaken by Environmental Representatives for Sydney Metro Western Sydney Airport for the month of November2023.

Yours sincerely

[REDACTED]
Environmental Representative

Cc:

Sydney Metro: [REDACTED]
[REDACTED]

DPE: Major Projects Portal

Enclosed: Nil

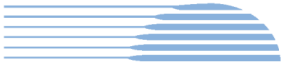
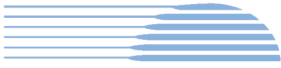


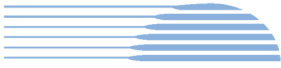
Table of Contents

1. Advanced and Enabling Works (AEW)	3
2. Station Boxes and Tunnelling (SBT)	7
3. Surface and Civil Alignment Works (SCAW)	12
4. Stations, Systems, Trains, Operations and Maintenance Package (SSTOM)	17
5. Statement of Limitations	20



1. Advanced and Enabling Works (AEW)

Contract Package	Environmental Representative/s
Advanced and Enabling Works (AEW)	[REDACTED]
Key Construction Activities During the Period	
<ul style="list-style-type: none"> ▪ SSTOM Project Office (SPO): <ul style="list-style-type: none"> ○ The works are complete with the exception of lift installation ▪ St Marys Footbridge (FSM): <ul style="list-style-type: none"> ○ Piling works have continued ○ Compound establishment was completed ○ Clearing of trees adjacent to the commuter car park ▪ Water: <ul style="list-style-type: none"> ○ Material receipt and load out from the Gipps St compound ○ Works are complete and demobilisation activities were undertaken 	
Key Construction Activities Look Ahead	
<p>The Construction activities planned for the upcoming period for the Advanced Enabling Works (AEW) comprise of:</p> <ul style="list-style-type: none"> ▪ SSTOM Project Office (SPO): <ul style="list-style-type: none"> ○ The lift is due to be installed in December 2023 ▪ St Marys Footbridge: <ul style="list-style-type: none"> ○ Continuation of piling works ○ Service investigations ○ Material haul out from piling works ▪ Water: <ul style="list-style-type: none"> ○ Minor demobilisation activities and compound rehabilitation 	
ER Inspections	
<p>There were no (0) ER inspections of the SPO as the SPO has been handed over to Sydney Metro, two (2) inspections of the St Marys Station Footbridge, and two (2) inspections of the AEW Water contract undertaken by [REDACTED] in November 2023 (ER inspections are on a fortnightly cycle weather and health permitting).</p> <p>St Marys Footbridge</p> <ul style="list-style-type: none"> ▪ 07/11/2023 - Key points/ issues raised during this inspection were as follows: <ul style="list-style-type: none"> ○ The site compound has been completed and was neat and tidy ○ The recent wet conditions caused mulch and dirt to enter the gutter, and a small sink hole to open ○ The HVLR needs to be approved prior to the removal of stockpiles ▪ 24/10/2023 - Key points/ issues raised during this inspection were as follows: <ul style="list-style-type: none"> ○ Works have been conducted in a compliant manner ○ Minor housekeeping issues with regard to material storage and pit protection were detected ○ The HVLR needs to be approved prior to the removal of stockpiles. 	



- Update to the CEMP, including the water reuse strategy, is required prior to the next shutdown weekend on 16-17/03/24

AEW Water

- **07/11/2023** - Key points/ issues raised during this inspection were as follows:
 - The project entered its completion phase and the sites were being demobilised
 - Disturbed areas to the west and east of Mamre Rd have been rehabilitated
- **21/11/2023** - Key points/ issues raised during this inspection were as follows:
 - This was the final inspection as the works are complete and no actions were detected
 - Overall Quickway has undertaken this project to a high standard of environmental compliance. No complaints were received, a responsive team and a high quality of on ground controls made this project a success. Quickway should be commended for their diligence.

Photos

St Marys Footbridge



Materials are stored on the footpath adjacent to the newly planted garden bed. LoR to make submission to SM and TfNSW regarding usage and potential rehabilitation



The street sweeper was in use during the inspection to remove mud spilt onto the main access



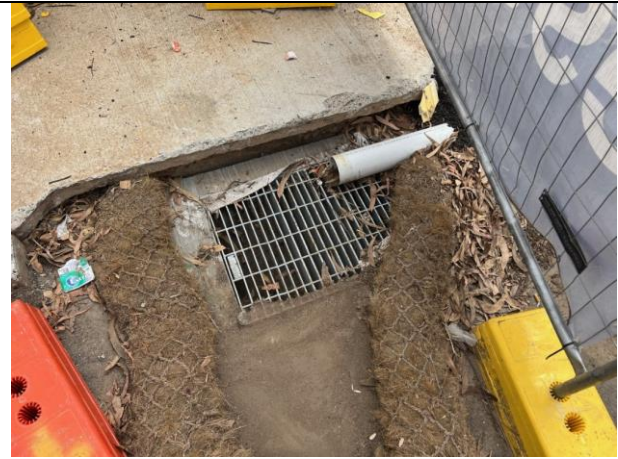
Excavated material has been stockpiled and covered in geofabric prior to removal.



Ballast has been applied to the area where machinery will be parked.



Hot mix has been applied to the disturbed area within the compound.



The drain in the north west corner of the compound requires a clean out and new pit liners installed.

AEW Water



The compound has been demobilised with only a few materials left to load out.



The entry exit point from the site compound is clean with no mud tracking.



The seed is starting to germinate in the recently hydromulched areas west of Mamre Rd.

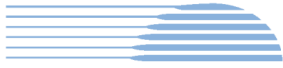


Fly tipping on Old Luddenham Rd has been reported to the council and has been removed.

Endorsed Document/s

The following documents were endorsed/approved by the ER [REDACTED]

- None for the period



<p>The following documents were provided for information or reviewed with comments provided to Sydney Metro.</p> <ul style="list-style-type: none">Out of Hours Application Form – Footbridge St Marys – Weekend 21, 18th-20th November 2023 Footbridge St Marys- Site Early Works (rev 4)
<p>Complaints / Incidents / Non-compliance</p> <p>No non-compliances or incidents were reported to or identified by the ER for the period.</p> <p>No complaints were received during the period.</p>
<p>Audits (specific to packages reported in this report)</p> <ul style="list-style-type: none">None for the period
<p>Looking Forward – Core Focus Areas</p> <p>AEW Water finished in November 2023. St Marys Footbridge works will be performed during standard hours Monday to Friday with the next weekend possession scheduled for March 2024. The focus over the coming month is ensuring the sites are prepared for the Christmas shutdown.</p> <p>ER Closing Comments:</p> <p>The AEW Water works have been undertaken to a high level of compliance, this was seen with no complaints for the whole project, a very good result. The Footbridge St Marys is navigating some design interference issues with SBT, nonetheless works are continuing with regard to contamination sampling and compound establishment.</p>



2. Station Boxes and Tunnelling (SBT)

Contract Package	Environmental Representative/s
Station Boxes and Tunnelling (SBT)	[REDACTED]
Key Construction Activities During the Period	
<ul style="list-style-type: none"> ▪ St Marys: <ul style="list-style-type: none"> ○ No SBT activities this period ○ SBT activities (TBM retrieval) anticipated to resume March/April 2024 ▪ Claremont Meadows Services Facility: <ul style="list-style-type: none"> ○ Water treatment plant operating. ○ Sediment basins operational. ○ Storage of surplus construction materials from other northern sites ○ Casting of TBM support block for traverse. ○ TBM breakthrough and traverse anticipated December 2023 / January 2024 ▪ Orchard Hills: <ul style="list-style-type: none"> ○ Spoil and topsoil storage. ○ Operation and maintenance of ERSED controls. ○ Pre-cast tunnel segment storage in the north. ○ TBMs tunnelling progressed 1600 m and 1200 m respectively ○ Tunnel segment delivery ○ Processing and storage of tunnel spoil. ○ Tunnel Spoil haulage offsite ○ Grout plant operation. ○ Water treatment plant operation ○ Reconfiguration and improvements (concreting) of internal approaches to HV exit ▪ Aerotropolis: <ul style="list-style-type: none"> ○ No SBT activities this period ○ SBT activities (TBM retrieval) anticipated to resume April/May 2024 ▪ Bringelly Services Facility: <ul style="list-style-type: none"> ○ Water treatment plant Operation – Water treated and disposed at Claremont Meadows ○ Storage of surplus construction materials from other southern sites ○ TBM breakthrough and traverse anticipated February/March 2024 	
Key Construction Activities Look Ahead	
<ul style="list-style-type: none"> ▪ St Marys: <ul style="list-style-type: none"> ○ Nil SBT activities next period. ▪ Claremont Meadows Services Facility: <ul style="list-style-type: none"> ○ Continue erosion and sediment controls operation and maintenance. ○ Continue Water Treatment Plant operation and maintenance. ○ Storage of surplus construction materials from other northern sites ○ Potential TBM breakthrough ▪ Orchard Hills: 	



- Activities anticipated for the upcoming period are generally consistent with those for this period.
- **Aerotropolis:**
 - Nil SBT activities next period.
- **Bringelly Services Facility:**
 - Continue Erosion sediment controls operation and maintenance.
 - Operation of WTP.

ER Inspections

There were two (2) ER Inspections conducted on 09/11/23 and 23/11/23 by [REDACTED]

9/11/2023 Attended by DPE - Key points/ issues raised during this inspection were as follows:

- Sites were generally well managed with requirements for improvement noted in relation to effective management of TBM spoil materials storage and cleanliness of internal roads at Orchard Hills, to reduce tracking onto Kent Rd noted below.
- Damaged surface with potholes at No 57 Kent Rd (North) required repairs, and CPBG was advised to remove veneer of fine tracked sediment accumulation (including in gutters) up to the M4 overpass, to alleviate perceptible dust in the area.
- Appreciable persistent tracking residue noted from site access on Kent Rd was being addressed by CPBG by relocating rumble grid and wheel washing to locations where, prior to exit, manual wheel washing can be conducted after automated wheel washing. Manual and automated wheel wash areas were proposed to be followed by new easy to clean concrete runway, replacing the existing deteriorated and hard to clean chip seal.

23/11/2023 Attended by DPE (Orchard Hills) - Key points/ issues raised during this inspection were as follows:

- Damaged surface with potholes at No 57 Kent Rd (North) repaired.
- Condition of Kent Rd from SBT HV access improved, with manual wheel washing being conducted after automated wheel washing. Automated wheel wash area now followed by new easy to clean concrete runway,
- Consistency of TBM spoil material significantly improved – moisture content significantly reduced, with attendant improvements to the condition of the access/haulage roads - negligible sediment accumulations noted.

ER inspections were on a fortnightly cycle for this period. Inspections of St Marys and Aerotropolis sites are paused until SBT site establishment activities for TBM retrieval commence.

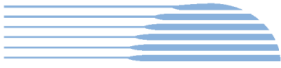
Photos



Orchard Hills view North: Portal activities, with TBM spoil conveyor delivery to the surface.



Kent Rd View north: Pothole at No. 57 repaired.



Orchard Hills view north: Wheel wash now followed by concrete runway and manual wash.



Orchard Hills view south: Improved condition of internal roads.



Orchard Hills view northwest: Consistency of TBM spoil material improved.



View North: Street sweeper in action on Kent Rd.



Orchard Hills: Condition of Kent Road significantly improved.



Orchard Hills: Some congestion on Kent Rd. due to cumulative SBT/SCAW heavy vehicle use.



Tracking noted from SCAW Lansdowne Rd south exit being used by SCAW haulage vehicles.



Tracking from SCAW Lansdowne Rd south exit extended into Kent Rd.



Claremont Meadows: Casting of TBM traverse support blocks.



Claremont Meadows: Concrete washout area well implemented.



Claremont Meadows: Shaft base slab completed.



Claremont Meadows: Negligible tracking noted from southern site access onto Gipps Road.

Endorsed Document/s

No documents were endorsed/approved by the ER.

The following documents were provided for information:

- October Monthly Monitoring Reports comprising Dust (real-time), Noise and Surface Water.
- St Marys Station PRB Monthly Mitigation Monitoring Report 3 - September 2023 (Rev 00, 1/11/2023)
- Groundwater Modelling Report (Rev C, 29/9/23).

Complaints / Incidents / Non-compliance

One noncompliance with the Approval was reported to the ER this period that relates to the heavy vehicle parking on local roads noted on 26/10/2023.

There was one incident of note reported to the ER this period concerning minor spillage TBM spoil onto the road on 6/11/2023 from haulage vehicles, on breaking as they approached traffic lights/intersection. The ER did not identify any incidents of note.

Nine (9) complaints were reported to the ER. Six (6) related to Orchard Hills/Claremont Meadows, and were dominated by air quality and tracking on Kent Road and Lansdowne road.

Audits (specific to packages reported in this report)

- Nil this period.



Looking Forward – Core Focus Areas

Risks now relate mostly to activities at Orchard Hills, namely management of delivery/haulage vehicles, and tracking on Kent road.

ER Closing Comments:

The contractor continues to be receptive to requests for improvements and proactive in planning of environmental controls, including for future activities at Orchard Hills. This was evidenced by recent improvements at Orchard Hills following continuing concerns raised by the ER around tracking. The effectiveness of those improvements, and any need for further improvements, will be assessed over the next period.

CPBG Community Relations team should be commended for their community engagement/recognition initiatives this period. CPBG gave away local business support vouchers to the Potters Christian Community Church when they conducted road repair work on Phillip Street out of hours early this period. The work was on a Sunday and noise modelling indicated it would be disruptive to the Church. Pastor Theo put on a chicken lunch with the vouchers that was well attended by his congregation, and gave out additional vouchers, which were also well received.

CPBG received the following feedback and photos from Pastor Theo:

“Here are some photos of us giving out the vouchers. Thank you once again!

These have been a great blessing to our St Marys community of believers,

Kind Regards

Pastor Theo”

A great example for major infrastructure projects of support to local community and businesses.



3. Surface and Civil Alignment Works (SCAW)

Contract Package	Environmental Representative/s
Surface and Civil Alignment Works (SCAW)	[REDACTED]
Key Construction Activities During the Period	
<ul style="list-style-type: none"> ▪ Patons Lane <ul style="list-style-type: none"> ○ Sub structure work on going ○ Sandstone placement north of Blaxland Creek ○ Northern tributary culvert construction ongoing ▪ SMF <ul style="list-style-type: none"> ○ Stockpiling of vegetation is occurring for use during SSTOM works ○ Material continues to be stockpiled at PS105 ▪ Defence Land <ul style="list-style-type: none"> ○ Sandstone placement is ongoing between Patons Lane and the Warragamba Pipeline ○ Topsoil is being placed on batters ○ Sub structure works ongoing ▪ Luddenham Station <ul style="list-style-type: none"> ○ Construction of Luddenham Rd roundabout continues ○ Structural station works continue. ○ Construction of alternative Celestino access ▪ Luddenham Road South <ul style="list-style-type: none"> ○ Ongoing placement of viaduct segments ○ Ongoing structural works. ○ Sediment basin constructed adjacent to Cosgroves Creek ▪ M12 to Cosgroves Creek <ul style="list-style-type: none"> ○ Sandstone is being used to build the formation. ○ Piling is completed at Cosgroves Creek ○ Cosgroves creek clearing and haul road crossing ongoing ▪ Elizabeth Drive <ul style="list-style-type: none"> ○ Sandstone delivery is progressing south of Elizabeth Drive ○ OOHW sandstone delivery continues ○ Crusher moved into place to commence crushing 	
Key Construction Activities Look Ahead	
<ul style="list-style-type: none"> ▪ Patons Lane: <ul style="list-style-type: none"> ○ Rehabilitation works are continuing along the alignment ○ Further sampling is occurring to determine the source of contaminated leachate ▪ Stabling and Maintenance Facility (SMF) Orchard Hills: <ul style="list-style-type: none"> ○ Structures works will continue at Blaxland Creek ○ Culvert and fauna crossing works will continue at the unnamed tributary ○ Rehabilitation will continue 	



- Defence Land
 - Earthworks to continue
 - Sandstone filling and compaction will continue
 - Structures works to continue
- Luddenham Station:
 - Construction of the Celestino access road
 - Construction of the roundabout on Luddenham Rd will continue.
- Luddenham Road South:
 - Precast elements for the viaduct will continue to be installed
 - Structures will continue
- M12 to Cosgroves Creek:
 - Structures activities to continue.
 - Sandstone will be continued to be placed on the formation
 - Construction of the 30ML basin continues which will ultimately be a flood mitigation basin.
- Elizabeth Drive:
 - Ongoing sandstone placement along the alignment

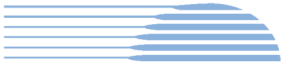
ER Inspections

There were three (3) ER Inspections in November 2023 (ER inspections are on a fortnightly cycle weather and health permitting).

- **02/11/2023** [REDACTED] - Key points/ issues raised during this inspection were as follows:
 - The project continues to be well managed with good outcomes being observed on the project
 - All actions from the previous ER inspection were closed out within the agreed timeframes
 - The potential contamination at Patons Lane continues to be tested and analysed.
- **16/11/2023** [REDACTED] - Key points/ issues raised during this inspection were as follows:
 - The waste on Luddenham South has been removed and can now be closed.
 - As earthworks progress toward the M12 bridges attention needs to be paid to where site water is collecting and draining to, ESCPs should be updated to reflect this.
 - Further testing is required for the contaminated groundwater at Patons Lane.
 - Weeds were observed across some sections of the project and should be sprayed.
- **30/11/2023** [REDACTED] - Key points/ issues raised during this inspection were as follows:
 - The recent wet conditions were generally well managed by CPBUI
 - Mud tracking was noticed at several locations across the project. While some areas posed minor risk, ER requested all area be actively managed
 - Weeds were observed across many of the project sites. Weed mapping needed to occur as per EPBC requirements and application of herbicide immediately following
 - The unnamed tributary continues to be managed in an exemplary fashion, feedback has been provided to the CPBUI team.



Photos	
	
<p>Elizabeth Drive compound: The main alignment is being cut down as works progress towards the M12 bridges.</p>	<p>Elizabeth Drive compound: Internal road from the compound needs increased sweeper frequency in wet.</p>
	
<p>Luddenham roundabout: Hydromulch has been applied to the batters south of the roundabout.</p>	<p>Luddenham roundabout: Traffic has been switched and works can now progress on the eastern side of the road.</p>
	
<p>Defence: Fauna crossing works are in progress.</p>	<p>Patons Lane: Seepage of water continues in the cut. The contractor is arranging additional testing.</p>



PS105: Rock crusher has been set up behind bunds and with water sprays to limit dust migrating from the site.



Unnamed tributary culvert and fauna crossing: Works progress to a high level of environmental compliance.



Luddenham South: Viaduct works crossed Luddenham Road and continue towards Cosgroves Creek.



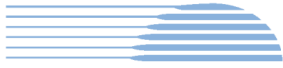
Luddenham South: Viaduct segments are stored in a specific order to be lifted into correct position.



Cosgroves Creek: Works continue in the biofiltration basin, with material being excavated.



Cosgroves Creek: The downstream basin is operating well and capturing run off from the catchment.



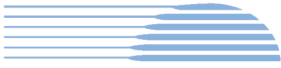
Endorsed Document/s
<p>No documents were endorsed/approved by the ER, however, the following documents were approved as the Sydney Metro (SM) approved delegate pursuant Section 1.4.4 of the Construction Noise and Vibration Standard v4.2:</p> <ul style="list-style-type: none">▪ Detailed Noise and Vibration Impact Statement 6. Lansdowne Road / Samuel Marsden Earthworks & Structure Works (rev C) <p>The following documents were provided for information or reviewed:</p> <ul style="list-style-type: none">▪ Construction Environment Management Plan (CEMP) – Surface and Civil Alignment Works (rev 3)▪ Air Quality Management Sub-plan Western Sydney Airport – Surface and Civil Alignment Works (rev 3)▪ Soil and Water Management Sub-plan – Surface and Civil Alignment Works (rev 3)▪ Appendix C1 – Surface Water Quality Monitoring Program – Surface and Civil Alignment Works (rev 3)
Complaints / Incidents / Non-compliance
<p>No non-compliances were reported to or identified by the ER for the period:</p> <p>No incidents of note were reported to the ER during the period:</p> <p>Two (2) complaints were reported to the ER. Both complaints related the traffic management/behaviour on Luddenham Road. In both cases the CPBUI construction manager took control of the situation and changed the work practices.</p>
Audits (specific to packages reported in this report)
<ul style="list-style-type: none">▪ Nil for the period
Looking Forward – Core Focus Areas
<p>Focus will be on weed mapping and herbicide application, along with the site shutdown process as the project approaches the Christmas break.</p> <p>ER Closing Comments: Overall the project has been well managed and is progressing well. Wet weather continues to be a challenge for the works, however on the whole controls are adequate with only isolated examples noted during inspections that require further attention. Given the time of year, weeds have again become prevalent on the project and this is an issue that is being driven by both the ER and Sydney Metro. The works in the unnamed tributary have been of a superior standard and feedback has been provided to the project team.</p>



4. Stations, Systems, Trains, Operations and Maintenance Package (SSTOM)

Contract Package	Environmental Representative/s
Stations, Systems, Trains, Operations and Maintenance Package (SSTOM)	[REDACTED]
Key Construction Activities During the Period	
<p>Construction halted for the majority of the period due to WorkSafe rectification works</p> <ul style="list-style-type: none"> ▪ Saint Marys Station (STM) <ul style="list-style-type: none"> ○ Commenced piling in station box ○ Survey of station box ▪ Orchard Hills (OHE) <ul style="list-style-type: none"> ○ Site establishment works commenced. Site sheds currently being installed ○ Soil sampling in the station box ▪ Stabling and Maintenance Facility (SMF) <ul style="list-style-type: none"> ○ Site access works commenced ○ Swale drain construction ongoing ○ Safety bunds construction commenced ○ Note SCAW reconstructing sediment basin for joint use ▪ Luddenham Station (LDN) <ul style="list-style-type: none"> ○ Site sheds installed ○ Compound setup commenced ▪ Aerotropolis Core (AEC) <ul style="list-style-type: none"> ○ Basins dewatered ○ Relining of swale drains commenced ○ Site traffic realignment commenced 	
Key Construction Activities Look Ahead	
<ul style="list-style-type: none"> ▪ STM <ul style="list-style-type: none"> ○ Test piles ongoing. Permanent piles to follow ○ Piling Rig noise monitoring to occur ○ DNVIS submitted for extended concrete works ▪ OHE <ul style="list-style-type: none"> ○ Site compound setup ▪ SMF <ul style="list-style-type: none"> ○ Safety swale and traffic bund installation ▪ LDN <ul style="list-style-type: none"> ○ The station portion is expected to be handed over in December ▪ AEC <ul style="list-style-type: none"> ○ Site establishment ○ EPL update for discharge locations 	

ER Inspections	
<p>There was one ER Inspection in November 2023 of STM, LDN and AEC. ER inspections are undertaken at a risk-based frequency at each site until construction work commences.</p> <p>21/11/2023 (by ██████████) - Key points/ issues raised during this inspection were as follows:</p> <ul style="list-style-type: none"> ○ It was noted that the sites look generally good, and actions were related to erosion and sediment control maintenance and discussions of long-term erosion stabilisation using hydroseed of exposed areas has been agreed. 	
Photos	
	
<p>STM: Site shutdown; noted erosion controls were installed.</p>	<p>LDN: Temporary bund installed on site generator.</p>
	
<p>LDN: sheeting of the light vehicle car park on hold.</p>	<p>LDN: stabilisation of the compound batter and controlled flow from water tanks to be implemented.</p>
	
<p>AEC: Water discharge from the site compound into the clean water diversion drain. Additional controls to dissipate discharged water to be implemented.</p>	<p>AEC: light vehicle route construction and long term stabilisation of the embankment to be implemented.</p>



<p>AEC – Polymer deterioration of the southwest triangle area (adjacent to sediment basin and clean water diversion) was noted and long-term stabilisation using hydroseed to be implemented.</p>	<p>AEC – clean water diversion rock checks in place.</p>
<p>Endorsed Document/s</p>	
<p>No documents were endorsed/approved by the ER.</p>	
<p>Complaints / Incidents / Non-compliance</p>	
<p>No non-compliances were identified by or reported to the ER during this period. There were no incidents of note identified by or reported to the ER during this period. No complaints were reported to the ER the period.</p>	
<p>Audits (specific to packages reported in this report)</p>	
<ul style="list-style-type: none"> ▪ Nil for the period 	
<p>Looking Forward – Core Focus Areas</p>	
<p>The focus will be on the implementation of the CEMP and sub-plans, with a particular focus on stabilising unused areas, implementing erosion and sediment controls and end-of-year shutdown procedures.</p> <p>ER Closing Comments: The project team continues to have a healthy team dynamic. Detailed design is continuing. PLM has been actioning on minor issues quickly and long-term stabilisation using Hydroseed is planned during December.</p>	

5. Statement of Limitations

Healthy Buildings International (HBI) has prepared this report in accordance with the requirements of Condition A32 (k) of the Sydney Metro Western Sydney Airport, Concept and Stage 1 SSI 10051 Approval (23 July 2021). The report is for the sole purposes of Department of Planning and Environment (DPE) and Sydney Metro. It has been prepared based on generally accepted practices and standards at the time it was prepared. No other warranty, expressed or implied, is made as to the professional advice included in this Report. This report did not assess any aspects relating to safety.

Where the Report indicates that information has been provided to HBI by third parties, HBI assumes no liability for any inaccuracies in or omissions to that information.

This Report was prepared based on the conditions encountered and information reviewed at this time. HBI disclaims responsibility for any changes that may have occurred after this time.

This Report should be read in full. No responsibility is accepted for use of any part of this report in any other context or for any other purpose or by third parties. This Report does not purport to give legal advice. Legal advice can only be given by qualified legal practitioners.

Except as required by law, no third party may use or rely on this Report unless otherwise agreed by HBI in writing. Except as specifically stated in this section, HBI does not authorise the use or findings of this Report by any third party

To the extent permitted by law, HBI expressly disclaims and excludes liability for any loss, damage, cost or expenses suffered by any third party relating to or resulting from the use of, or reliance on, any information contained in this Report. HBI does not admit that any action, liability or claim may exist or be available to any third party.