

Mr Rob Sherry
Team Leader Compliance – Government Projects
Department of Planning and Environment
Locked Bag 5022
PARRAMATTA NSW 2124

7 October 2023

Ref:201208-ER_DPE-September 2023

Dear Rob

RE: Sydney Metro - Sydney Metro West SSI - ER Monthly Report for September 2023

Healthy Buildings International (HBI) submits this report to the Secretary in accordance with:

- Condition A30 (k) of the Sydney Metro West, Concept and Stage 1 SSI 10038 Approval (11 March 2021), and associated modifications (MOD 1 - 28 July 2021, MOD 2 - 3 June 2022, MOD3 – 4 July 2022 and MOD4 - 23 December 2022); and
- Condition A32(k) of the Sydney Metro West – The Bays to Sydney CBD SSI 19238057 Approval (24 August 2022).

The attached summary details the key activities undertaken by Environmental Representatives for Sydney Metro – Sydney Metro West for the month of September 2023.

Yours sincerely



Greg Byrnes
Environmental Representative

Cc:

Sydney Metro: Matthew Marrinan, John Lerokis, Pamela Tummers, Andrew Hendy, Cath Snelgrove , Ari Stypel, Ben Armstrong, Sarah Kemp
Contractors: Jared Lipton (AFJV), Steph Mifsud (GLC), Sally Reynolds (JCG)
DPE: Major Projects Portal



Table of Contents

1	Phase B - Central Tunnelling Package	4
1.1	Key Construction Activities During the Period	4
1.2	Key Construction Activities Look Ahead	5
1.3	ER Inspections	6
1.3.1	Photos	6
1.4	Endorsed Document/s	7
1.5	Complaints	8
1.6	Compliance	8
1.6.1	Incidents	8
1.6.2	Non-compliance and Potential Non Compliance	8
1.6.3	Audits	8
1.7	Looking Forward – Core Focus Areas	9
2	Phase F – Western Tunnelling Package	10
2.1	Key Construction Activities During the Period	10
2.2	Key Construction Activities Look Ahead	11
2.3	ER Inspections	11
2.3.1	Photos	12
2.4	Endorsed Documents	13
2.5	Complaints	13
2.6	Compliance	14
2.6.1	Incidents	14
2.6.2	Non-compliance	14
2.6.3	Audits	14
2.7	Looking Forward – Core Focus Areas	14
3	Phase G - Eastern Tunnel Package	15
3.4	Endorsed document/s	18
3.5	Complaints	18
3.6	Compliance	18
3.6.1	Incidents	18
3.6.2	Non-compliance	18
3.6.3	Audits	19
3.7	Looking Forward – Core Focus Areas	19
4	PHASE H - Westmead Telstra and Jemena Gas Relocation	20
4.1	Key Construction Related Activities During the Period	20
4.1	Key Construction Activities Look Ahead	20



4.2	ER Inspections	20
4.2.1	Photos	20
4.3	Endorsed Document/s.....	20
4.4	Complaints	20
4.1	Compliance.....	20
4.1.1	Incidents.....	20
4.1.2	Non-compliance.....	20
4.1.3	Audits	21
4.2	Looking Forward – Core Focus Areas	21
5	Sydney Metro Retained Obligations and Other Activity	22
5.1	Key Construction Activities During the Period	22
5.2	Key Construction Activities Look Ahead.....	22
5.3	ER Inspections	22
5.3.1	Photos	22
5.4	Endorsed Document/s.....	22
5.5	Complaints	22
5.6	Compliance.....	22
5.6.1	Incidents.....	22
5.6.2	Non-compliance.....	22
5.6.3	Audits	22
5.7	Looking Forward – Core Focus Areas	23
6	Statement of Limitations.....	24
7	Appendix A – ER Document Endorsement Records (ETP only).....	25



1 PHASE B - CENTRAL TUNNELLING PACKAGE

The Environmental Representatives for Phase B of Sydney Metro West are:

- Michael Woolley
- Greg Byrnes
- Jo Robertson

Phase B – Central Tunnelling Package (CTP) is being delivered by Acciona Ferrovia Joint Venture (AFJV). Phase B of Sydney Metro West has been further broken into:

- Phase B1: Civil works
- Phase B2: Tunnelling works

The AFJV hold EPL 21610 for this Phase of works. Activities defined as Phase B2-Tunneling Works in the Staging Report for Metro West commenced during the November 2022 reporting period at Burwood North.

1.1 Key Construction Activities During the Period

The Bays

- Ongoing operation of two TBMs including support activities such as the grout plant; deliveries of segments (24/7); works inside the acoustic shed. Ongoing construction of cross passages.
- Use of conveyor system to remove spoil from the TBMs in the station box and load spoil into the spoil shed. Storage of spoil in the shed and load out of trucks within the shed.
- Ongoing operation of the Construction Water Treatment Plant; site office facilities; and works shops.

Five Dock

- West shaft: Ongoing excavation of rock from the shaft using excavators with hammers for walls and edges. Access to the central cavern opened full width. Load out of material by trucks during standard construction hours using one or two exits. Main (northern) load out point uses a telescopic excavator to load trucks. The other, also used for concrete deliveries, uses a kibble. Trucks reverse into both load out/delivery points under traffic control.
- Ongoing excavation of the western cavern from the western wall of the shaft using a road header. Support for this work including operation of a scrubber and related ventilation system in the base of the excavation. This activity is only conducted during standard construction hours.
- East Shaft: Completion of excavation of the eastern cavern. Loading of trucks with spoil using either a telescopic excavator or kibble on the gantry crane. Storage of some spoil inside the acoustic shed for later load out on trucks. Ongoing use of a house on Waterview Street adjacent the eastern shaft for project offices. Ongoing ventilation from the shed from scrubbers in the cavern after relocation of the vents to the roof. Repairs made to roof vents after windy conditions.
- Operation of the Water Treatment Plant at the east site.



Burwood North

- Ongoing Form, Reo Pour (FRP) for the base of the Cross Over cavern involving very large volume pours. This has required early starts and late finishes under OOHs permits. Numerous concrete trucks involved unloading within the shed and exiting to Burton Street. Commencement of assembly of roof lining formwork.
- Ongoing excavation of the station box and stockpiling and load out off site of excavated materials. During large concrete pours, load out of trucks is stopped for that period. Wall support, such as rock anchor installation. Trucks entering site through acoustic shed from Parramatta Road with load out point adjacent to Parramatta Road outside the shed.
- Ongoing Nozzle excavation on the eastern face of the station box. This has involved set up of a temporary brattice cover at the south end of the station box and set up and operation of a scrubber unit (daytime hours only).
- Operation of the Water Treatment Plant
- Use of multi storey site offices
- South Shaft: Ongoing bulk excavation from the shaft using excavators. Wall support including drilling and installing anchors as well as shotcrete. Use of truck turntable with truck access from Burwood Road.
- Removal of B-Class Hoarding outside the acoustic shed on Burwood Road and installation of A-Class Hoarding.

North Strathfield

- Ongoing bulk excavation from steel platforms adjacent the slip lane alongside Queen Street. Drilling and stressing of rock anchors; wall support with shotcrete. A dozer has been used to rip the rock with a profiler on the walls. Use of rock hammers to remove rock around the walls of the station box. Load out of spoil onto trucks in the slip lane.
- Use of hoarding/traffic barrier along outside edge of new slip lane pavement to separate it from Queen Street.

Sydney Olympic Park

- Ongoing excavation of the station box using a ripper on a dozer and excavators. Much of the excavation completed by the end of the month, other than spoil and rock remaining at nozzles and where remedial works are being undertaken. Other works in the station box includes drilling, installing and testing rock anchors and shotcreting of walls.
- Load out of spoil using truck and dogs for some of the reporting period. Load out temporarily ceased due to nozzle and remedial works limiting access to remove remaining spoil.
- Ongoing remedial works being undertaken after movement of a section of the station box wall was detected. This involved ongoing placement of spoil against the base of the affected wall and installation of new anchors; whaler beams; and concrete infills.
- Works to excavate and construct nozzle sections at western and eastern ends of the station box. Use of concrete pumping area for this work – the concrete pump moved from the western to the eastern end of the station box during the reporting period.
- Preparation of the site for handover to the Western Tunnelling Package involving removal of concrete in some areas; construction of a new access driveway off Herb Elliot Ave; and placement of gravel over areas to be handed over.
- Use of site exit including weighbridge and wheel wash (as deemed to be required) to Figtree Drive. Heavy vehicles entering from Herb Elliot Avenue.
- Project Office Operating.

1.2 Key Construction Activities Look Ahead

- Ongoing activities as described above.



- Various OOHWs (conducted under the EPL).

1.3 ER Inspections

There were four ER inspections conducted on each Thursday during September 2023, with sites being inspected on an alternating basis, except for Five Dock which was inspected weekly. Key issues raised during the inspections included:

The Bays:

- Remove sediment around stormwater pits north of the spoil shed and at the LDP for the WTP.
- Ensure discharges from the WTP are compliant with EPL discharge criteria – AFJV issued an incident report for the discharge sighted during the inspection on 14 September.

Five Dock:

- Observations made regarding trucks arriving in groups at the Eastern Shaft shed which is challenging to manage, leading to a small number of trucks needing to do loops and return to the site.

Burwood North:

- Various ERSED and water management related actions after rain as observed on 28 September including ensuring water that leaves site does so under appropriate approvals.
- AFJV to review water management in the vicinity of the truck load out area and sump.
- Clean dirt at exits at BN and ensure no tracking of dirt occurs onto Parramatta Road (ongoing action, noting tracking was being cleaned by sweeper truck on Parramatta Road).

North Strathfield

- Nil

Sydney Olympic Park

- Nil

The number of actions raised has decreased when compared with previous months.

1.3.1 Photos



Figure 1 1 Base of the station box showing various plant operating (The Bays) and TBM support activities.



Figure 1 2 Segments in the Segment shed (The Bays).



Figure 1.3 South shaft excavation ongoing, with wall support (Burwood North).



Figure 1.4 Station Box excavation and nozzle works. (Burwood North)



Figure 1.5 Central cavern opening into the west shaft. (Five Dock-east).



Figure 1.6 Ongoing excavation of the western cavern using road header (Five Dock-west).



Figure 1.7 Excavation of spoil using steel platforms; wall support. (North Strathfield)



Figure 1.8 Excavation of the Station Box (SOP). Construction of nozzles in the eastern end.

1.4 Endorsed Document/s

- Nil documents were endorsed during the reporting period.

Some revised Management Plans were provided for review and comment.



1.5 Complaints

Based on a monthly Sydney Metro Complaint Register provided for September 2023, there were 13 complaints reported during the month, with four of the reported complaints identified as not related to AFJV activities. This compared to 21 complaints reported for the previous month.

Five of the project related complaints were from the Five Dock site and related to: damage to roof of shed (1); property damage (1); noise during OOHWs (1); noise during standard hours (1); heavy vehicle parked across driveway (1 – see NCR in Section 1.6.2).

Two complaints were received at Burwood North relating to: dust deposited on property (1); and spoil and cement trucks on approved haulage routes (1).

Two project related complaints were received relating to trucks operating at the North Strathfield site. Both complaints related to the behaviour of the truck drivers.

No complaints were received at the Bays or SOP during the reporting period.

1.6 Compliance

1.6.1 Incidents

No incidents considered to represent Incidents as defined under the Project Approval were reported to or observed by the ER.

One incident report (EI038) was issued by AFJV relating to an observation made during the ER Inspection on 14 September whereby coloured discharge was observed discharging to a stormwater pit which is the Licenced Discharge Point No. 4 (LDP 4). AFJV reported that *“The operator stated the discharge valve was closed as maintenance works were occurring. It is unknown how the valve was reopened as this is controlled digitally through an online portal.”* AFJV estimated the quantity of discharge at approximately 300L and reported the event to the EPA.

1.6.2 Non-compliance and Potential Non Compliance

One Non-Compliance Report was provided to the ER during the reporting period as follows:

- NCR 029: It was reported to the project that a truck had stopped in front of a residential driveway for approximately 15min on Second Ave after being loaded at the Five Dock East site. This was identified by a resident and an AFJV investigation commenced to review the complaint and potential NCR. The results of the investigation determined a project related truck parked in front of the driveway. AFJV note that the truck was stopped on an approved haul route.

1.6.3 Audits

The third Independent Environmental Audit on the Sydney Metro West, Concept and Stage 1 SSI 10038 Approval commenced on the 30 August 2023 with the Opening Meeting. The ER was interviewed by the auditors on the 4 September 2023.



1.7 Looking Forward – Core Focus Areas

- Dust generation at all sites during dry weather
- Dirt Tracking onto roads from all sites
- Noise and Vibration management at Five Dock and Burwood North
- Traffic Management at Five Dock.



2 PHASE F – WESTERN TUNNELLING PACKAGE

The Environmental Representatives for Phase F of Sydney Metro West are:

- Greg Byrnes
- Swathi Gowda
- Mike Woolley

Phase F – Western Tunnelling Package (WTP) is being delivered by Gamuda Australia Laing O’Rourke Consortium (GLC).

GLC are constructing this Phase of Sydney metro West under EPL 21676.

2.1 Key Construction Activities During the Period

During September, construction activities continued at all WTP sites, including the excavation of the Clyde Dive, station box at Westmead, and Diaphragm Wall construction at Parramatta. Both TBMs have commenced tunnel excavation at Rosehill. The following activities were undertaken at the Westmead, Parramatta, Rosehill, Clyde Dive and Clyde MSF sites during September 2023:

Westmead

- Station box excavation, rock bolts and shotcrete.
- Spoil from the Station Box is pre classified and being transferred straight off site.
- Acoustic Shed assembly over station box
- Water Treatment Plant commissioning
- Road Header excavation at the eastern end of the Station Box (24hrs/5days)
- OOHW drilling on Alexandra Avenue on Thursday night 21/9/2023

Parramatta

- Archaeological investigations completed
- Bentonite Plant operation
- Diaphragm wall (D-Wall) excavation with two cutters and one Grab with spoil being transferred to MSF
- The D-Wall construction is undertaken outside standard construction hours
- Water Treatment Plant assembly
- Water Treatment plant discharge line installation along George Street outside standard construction hours completed
- Footpath reinstatement and paving works along Macquarie Street

Clyde Dive

- Horizontal tunnelling with Road header from the tunnel shaft. The road header is now under receivers on the west side of James Ruse Drive
- Spoil management including transfer to the Clyde MSF site by Moxy and crossing Unwin Street
- Clyde dive excavation, shotcreting and soil nail drilling. Dozer, Rock hammer and excavator are now being used. Spoil (ASS) going to MSF East for treatment and placement in Speedway

Rosehill



- TBM 1 has commenced tunnel excavation.
- TBM 2 has commenced tunnel excavation
- Spoil from the TBM excavation is being removed from the box via a kibble and stockpiled in the Spoil Shed. The spoil conveyor will be operational in October 2023
- Long term water treatment plant is operational and receiving water from Clyde Dive and Clyde MSF. WTP waste is being stockpiled on site
- Grout Plant commissioning
- Segment delivery has commenced and the segment shed is being constructed
- Hytek basement sediment removal and demolition

Clyde MSF

- Water main and utilities trenching adjacent to the M4 and along Duck Creek
- Unwin Street diversion construction including piling and bridge works
- A'Becketts Creek low flow diversion channel excavation and rock armour placement.
- Duck Creek diversion - Low flow channel completed, original creek alignment is blocked at one end and is just tidal.
- Spoil management including stockpiling, segregation, classification and movement around site. This includes Acid Sulfate soil treatment
- Earthworks, including back filling of the Parramatta Speedway site and friable asbestos Speedway Grandstand removal
- Unexpected hydrocarbon find investigation at 2 Kay street, 15,000L of hydrocarbon liquid removed most likely diesel and water.

2.2 Key Construction Activities Look Ahead

The key construction activities planned for October 2023 are similar to those listed in Section 3.1 With the addition of the following:

- TBM 1 and 2 tunnel excavation
- Westmead Water Treatment Plant commissioning
- Temporary diversion A'Becketts Creek via coffer dams and pumps to allow for the preparation of the long term creek diversion
- Unexpected underground fuel tank investigation and remediation

2.3 ER Inspections

Five ER inspections were conducted in September 2023 (6/09/2023, 13/09/2023, 20/09/2023, 21/9/2023 and 27/08/2023). The inspection on the 21/9/2023 was of the out of hours work on Alexandra Avenue at Westmead. A total of 38 mm (Parramatta BOM) of rain fell during September 2023, compared to a monthly average of 51.4 mm. In total four actions were raised across the WTP in September. The actions and key issues raised at the inspections were:

- **Rosehill** – The Rosehill site is being managed well with focus turning to TBM excavation. However, one action was raised for in inappropriate chemical storage.
- **Clyde MSF** - This site currently presents the highest environmental risk for GLC with sediment controls and spoil management being the key focus area for this site. During an ER inspection, two actions were raised for inadequate acid sulfate soil stockpile management and erosion and sediment controls along Duck Creek.
- **Parramatta** – The Parramatta site is being managed well with no actions raised. The excavation of the D-Wall presents an elevated risk for GLC and remains a key focus area for this site.
- **Westmead** – The Westmead site is being managed well with no actions raised. Noise and vibration outside standard construction hours present an elevated risk for GLC and remains a key focus area for this site. The ER and the AA conducted an OOHW inspection and found the GLC Team to be diligent and focused on minimising noise.



- **Clyde Dive** – This site is being managed well with two actions raised. The noise and dust associated with the Clyde dive excavation presents an elevated risk and remains a key focus area for this site. The actions were for inadequate management of vac truck waste and a leaking diesel generator.

2.3.1 Photos



Figure 2.1: Westmead Site –AA monitoring air compressor



Figure 2.2: Westmead site – Station Box excavation with acoustic shed construction



Figure 2.3: Westmead Site – Night drilling works on Alexandra Avenue



Figure 2.4: Parramatta site – Footpath paving works on Macquarie Street



Figure 2.5: Parramatta Site – D-Wall excavation with cutter

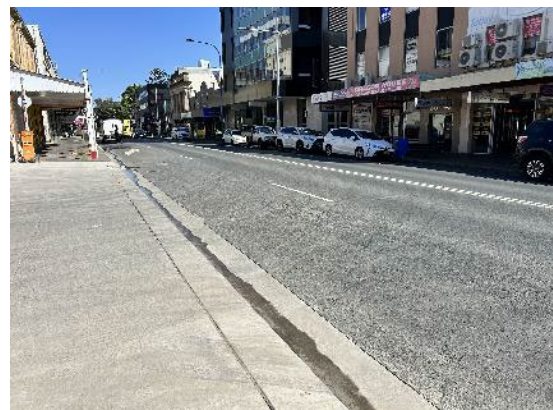


Figure 2.6: Parramatta Site – Entrance/Exit



Figure 2.7: Clyde Dive site – Dive Structure excavation along the ATC boundary



Figure 2.8: Clyde Dive site – Dive Structure excavation spoil load out



Figure 2.9: Rosehill Site – TBM 1 and 2



Figure 2.10: Rosehill Site – 50L/s Water Treatment Plant operating



Figure 2.11: Clyde MSF Site – Earthworks



Figure 2.12 – Clyde MSF Site – Duck Creek diversion construction with rock armour

2.4 Endorsed Documents

No documents were endorsed by the ER during the reporting period.

2.5 Complaints

Four complaints were provided to the ER during September 2023, three related to the WTP and one not related. These complaints are summarised below:



- **Westmead** – One complaint: The (19/9/2023) complaint related to a worker using a mobile phone whilst operating a bobcat. The relevance of this complaint to the project is still being investigated; however, the workforce will be toolboxed on mobile phone use.
- **Parramatta** – Three complaints: The (8/9/2023) complaint related to dust build up on a building in Macquarie Lane. Following an investigation, dust levels were found to be below targets and mitigation measures in place. GLC followed up with a clean of the ground floor of the building. Due to the hot windy weather, the ER has been focusing on dust mitigation during site inspections. The (21/9/2023) complaint related to garbage collection blocked by traffic control. The traffic controller was reminded to let the garbage truck through. The (27/9/2023) complaint related to business parking during sewer tie in works in United Lane. GLC provided two alternate parking spots for the business whilst the works are being completed.

2.6 Compliance

2.6.1 Incidents

No incidents considered to represent Incidents as defined under the Project Approval were reported to or observed by the ER during the reporting period.

2.6.2 Non-compliance

One Non-Compliance Report (NCRs) was issued by the Contractor during the reporting period. This non-conformance was identified by the ER and raised because of a failure to issue the Surface Water Monitoring Report and Noise and Vibration Monitoring Report for the monitoring period 19 January to 19 July 2023 to the Planning Secretary within 40 business days, in accordance with the respective Monitoring Programs. This results in a non-conformance against CoA C22.

2.6.3 Audits

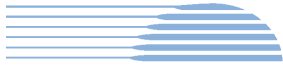
The third Independent Environmental Audit on the Sydney Metro West, Concept and Stage 1 SSI 10038 Approval commenced on the 30 August 2023 with the Opening Meeting. The ER was interviewed by the auditors on the 4 September 2023. No audit findings were received by the ER in September 2023.

2.7 Looking Forward – Core Focus Areas

GLC are managing their environmental risk and compliance adequately. Work outside the standard construction hours is being completed at Rosehill, Parramatta and Westmead. All WTP sites have a high number of truck movements and need to continue to keep the haul roads clean and gate wheel cleaning, especially following rain.

The core focus areas for the coming month are:

- GLC are undertaking work outside standard construction hours at the Westmead and Parramatta. The ER will focus on ensuring these works are managed in accordance with the NVMP and DNVIS.
- GLC continue to move a large amount of spoil off site and between sites, mud tracking on public roads has been a project risk and will continue to be a focus area for the ER.
- The diversion of Duck and A'Becketts Creek has commenced. This work involves creating a new low flow channel linked with rock and backfilling the original creek alignment. The ER will focus on ensuring the works are completed in accordance with the Flora and Fauna management Plan and Soil and Water Management Plan.



3 PHASE G - EASTERN TUNNEL PACKAGE

The Sydney Metro West Eastern Tunnel Package is Stage 2 of the Sydney Metro West CSSI and is described as major civil construction works between The Bays and Sydney CBD, including station excavation at Pyrmont and Hunter Street and tunnel excavation between the Bays and Hunter Street. Stage 2 (SSI 19238057) was approved on the 24 August 2022.

The Environmental Representatives for the Sydney Metro West Eastern Tunnel Package are:

- Michael Woolley
- Greg Byrnes
- Jo Robertson

The Eastern Tunnelling Package (ETP) is being delivered by John Holland CPB Ghella Joint Venture (JCG) with the contract being awarded in November 2022. Sydney Metro notified DPE that the date of commencement of construction was 17 March 2023. JCG have received Environmental Protection Licence (EPL 21784) for the project.

3.1 Key Construction Related Activities During the Period

Works conducted during the reporting period included:

Project Wide:

- Pre-Construction Surveys
- Drilling of monitoring and geotechnical investigation boreholes
- CCTV investigations of sewer lines.

Pyrmont East:

- Completion of hard demolition of buildings using excavators with hammers and shears/pulverisers. Slabs and walls of some buildings remain where they are providing ground support.
- Segregation and load out of demolition wastes
- Stabilisation of boundary footpaths using mini piles; installation of hoarding around the site
- Ongoing construction of hoarding around the site.
- Encountered unexpected find of Underground Storage Tank containing water/hydrocarbon mix

Pyrmont West:

- Ongoing hard demolition by excavator using shears and pulverisers and where required rock hammers – most demolition above ground slab completed
- Ongoing sorting and load out of soft strip and demolition waste materials.
- Removal of scaffolding around the site as buildings were demolished.

Hunter Street West:

- Hazardous Materials assessments and removal
- Ongoing soft strip of buildings to be demolished
- Ongoing use of the electric Tower Crane
- Ongoing installation of scaffolding along some parts of George and Hunter Streets
- Ongoing use of the basement load out zone for loading trucks and removal of soft strip wastes through driveway to Hunter Street. Completion of soft strip of 9 Hunter Street.

Hunter Street East:

- Activities inside the Bligh Street acoustic shed including ongoing excavation of the station cavern and various adits; declines and ventilation shafts; stockpiling and load out of spoil. Use of air ventilation systems and other tunnelling support activities.
- Hazardous Materials assessments and removal
- Ongoing soft strip of buildings to be demolished
- Occasional use of the electric Tower Crane such as for waste removal from the tops of buildings and scaffolding placement
- Installation of B-Class hoarding around the site



- Ongoing installation of some scaffolding at the site based on “needles” installed on slabs above ground floor level
- Use of penetrations in the walls between buildings for better access.
- Penetrations in roof slab and lower levels of one building near Bligh Street to access lower levels to remove soft strip wastes in bins by the tower crane from the roof
- Ongoing works to support planned hard demolition activities

The Bays:

- Ongoing use of site offices
- Commissioning of the temporary WTP
- Ongoing works for the Construction WTP
- Completion of FRP works for walls of the spoil shed and for haul road
- Completion of FRP for the base slab and footings of the segment shed
- Ongoing construction of an HV kiosk to the west of the haul road in the vicinity of the WBPS including supervision/management/recording of heritage items identified by heritage consultants
- Excavation for a sewer connection adjacent the WBPS
- Set up of environmental controls.

3.2 Key Construction Activities Look Ahead

The following works are planned in October:

- Ongoing activities as described above as conducted for September
- Utility investigations and relocations
- Further site establishment works at all sites

3.3 ER Inspections

Four ER inspections were conducted during the reporting period on each Tuesday of September. One action was raised during the month during the inspection dated 19th September:

- JCG to review the timing of the operation of the sweeper truck at Pyrmont and Hunter Street sites.

Observations were made on various items including the need to continue to manage and monitor dirt tracking on local roads at all sites. JCG were observed to be responsive to ER feedback during inspections and addressed action items promptly.



3.3.1 Photos



Figure 3.1 Pyrmont East: Completion of Stage 1 of hard demolition works



Figure 3.2 Pyrmont East: Completion of Stage 1 of hard demolition works



Figure 3.3 Pyrmont St West: Hard demolition near completed.



Figure 3.4 Pyrmont St West: Scaffolding installed around the building being removed after demolition of upper floors



Figure 3.5 Bligh Street Acoustic Shed: Ongoing load out of spoil onto trucks



Figure 3.6 Hunter Street West: Ongoing soft strip; segregation and load out of wastes in the various buildings



Figure 3.7 The Bays: FRP activities completed for the Spoil Shed



Figure 3.8 The Bays: FRP works for the haul road

3.4 Endorsed document/s

There were no documents endorsed by the ER during the reporting period.

In accordance with CoA A32(d)iii the written statements endorsing the above documents are provided in Appendix A (if relevant).

3.5 Complaints

Fifteen (15) complaints related to the ETP were reported to the ER during September 2023 compared to five for August.

Twelve (12) of these complaints related to Air Quality at the Pyrmont sites – mainly the Pyrmont West site. Most complaints related to dust, with one complaint related to fumes from a drill rig located on a local road. The increase in dust complaints correlates with the bulk of the demolition works at Pyrmont West being conducted in September, and ongoing hard demolition at Pyrmont East. These demolition activities have been completed down to slab level at Pyrmont East, and to near slab level in Pyrmont West. Dust mitigation measures were observed to be in place during ER Inspections.

One other complaint received at Pyrmont related to the parking of construction vehicles at Pyrmont East.

Two of the complaints related to the Hunter Street sites regarding: noise during standard hours; and lack of signage.

Based on feedback provided by JCG, prompt responses to complaints has occurred.

3.6 Compliance

3.6.1 Incidents

No Incidents as defined under the Infrastructure Approval or under Sydney Metro/JCGs systems were reported to the ER during the reporting period.

3.6.2 Non-compliance

No non compliances were reported by JCG or Sydney Metro for the reporting period and none were observed by the ER.



3.6.3 Audits

The ER attended as an observer an internal audit of the Heritage Management Plan by JCG on 29th September.

3.7 Looking Forward – Core Focus Areas

In October 2023, the ER Team will be focused on:

- General monitoring of construction activities; including site establishment works at the Bays
- Ongoing hard demolition activities at Pyrmont West and JCG activities at Pyrmont East
- Potential for tracking of dirt at the various demolition sites and at the Bays
- Ongoing preparation for hard demolition at Hunter Street sites
- Tunnelling of the cavern from Hunter Street East.



4 PHASE H - WESTMEAD TELSTRA AND JEMENA GAS RELOCATION

The Sydney Metro West Phase H – Westmead Telstra and Jemena Gas Relocation involves the installation of new utility services around the new Sydney Metro Station at Westmead via Hawkesbury, Bailey and Hassell Streets.

The Environmental Representatives for the Sydney Metro West Eastern Tunnel Package are:

- Greg Byrnes
- Michael Woolley

The Sydney Metro West Phase H – Westmead Telstra and Jemena Gas Relocation is being delivered by Quickway with the contract being awarded in August 2023.

No EPL will be required for this phase of Sydney metro West.

4.1 Key Construction Related Activities During the Period

No works were conducted during the reporting period.

4.1 Key Construction Activities Look Ahead

No construction work was completed in September 2023 and no works were undertaken in September 2023 under the Low Impact Works approval pathway.

4.2 ER Inspections

No ER inspections were completed during the reporting period.

4.2.1 Photos

None

4.3 Endorsed Document/s

The following documents were endorsed during the reporting period.

- Phasing Report Revision 1.6– Sydney Metro West, Stage 1 (Incorporating Phase H – Westmead Utilities Installation and Relocation Works)

4.4 Complaints

No complaints have been reported to the ER in relation to these works

4.1 Compliance

4.1.1 Incidents

No incidents have been reported to the ER in relation to these works.

4.1.2 Non-compliance

No non-compliances have been reported to the ER or identified by the ER.



HBI Healthy Buildings International Pty Ltd

4.1.3 Audits

No audits were conducted during the reporting period.

4.2 Looking Forward – Core Focus Areas

The core focus areas for the coming month are:

- Management Plan review
- Low Impact Works



5 SYDNEY METRO RETAINED OBLIGATIONS AND OTHER ACTIVITY

The Environmental Representatives for the Sydney Metro Retained Obligations and other Activities are:

- Jo Robertson
- Greg Byrnes

The Sydney Metro Retained Obligations and other Activities is being delivered by Sydney Metro with various sub-contractors delivering the works. These works do not require an EPL.

5.1 Key Construction Activities During the Period

The ER is not aware for other Sydney Metro managed construction activities during the period.

5.2 Key Construction Activities Look Ahead

The ER is not aware for other Sydney Metro managed construction activities during the period.

5.3 ER Inspections

There were no ER inspections of this work during the reporting period.

5.3.1 Photos

None

5.4 Endorsed Document/s

No Sydney Metro documents were endorsed during the reporting period.

5.5 Complaints

No complaints have been reported to the ER in relation to the investigations previously conducted for Sydney Metro.

5.6 Compliance

5.6.1 Incidents

No incidents have been reported to the ER in relation to the investigations previously conducted for Sydney Metro.

5.6.2 Non-compliance

No non compliances have been reported to the ER in relation to the investigations previously conducted for Sydney Metro.

5.6.3 Audits

No audits were conducted during the reporting period.



5.7 Looking Forward – Core Focus Areas

A risk workshop is held monthly with the ERs and the Sydney Metro Environment team to discuss contractor performance, environmental risk and identify key focus areas for the upcoming month. This process is continuing.



6 STATEMENT OF LIMITATIONS

Healthy Buildings International (HBI) has prepared this report in accordance with the requirements of Condition A30(k) of the Sydney Metro West, Concept and Stage 1 SSI 10038 Approval (11 March 2021), and Condition A32(k) of the Sydney Metro West – The Bays to Sydney CBD SSI 19238057 Approval (24 August 2022).

The report is for the sole purposes of Department of Planning and Environment (DPE) and Sydney Metro. It has been prepared based on generally accepted practices and standards at the time it was prepared. No other warranty, expressed or implied, is made as to the professional advice included in this Report. This report did not assess any aspects relating to safety.

Where the Report indicates that information has been provided to HBI by third parties, HBI assumes no liability for any inaccuracies in or omissions to that information.

This Report was prepared based on the conditions encountered and information reviewed at this time. HBI disclaims responsibility for any changes that may have occurred after this time.

This Report should be read in full. No responsibility is accepted for use of any part of this report in any other context or for any other purpose or by third parties. This Report does not purport to give legal advice. Legal advice can only be given by qualified legal practitioners.

Except as required by law, no third party may use or rely on this Report unless otherwise agreed by HBI in writing. Except as specifically stated in this section, HBI does not authorise the use or findings of this Report by any third party

To the extent permitted by law, HBI expressly disclaims and excludes liability for any loss, damage, cost or expenses suffered by any third party relating to or resulting from the use of, or reliance on, any information contained in this Report. HBI does not admit that any action, liability or claim may exist or be available to any third party.



HBI Healthy Buildings International Pty Ltd

7 APPENDIX A – ER DOCUMENT ENDORSEMENT RECORDS (ETP ONLY)