

HBI

Healthy Buildings International Pty Ltd  
A.C.N. 003 270 693 A.B.N. 39 003 270 693

Suite 2.06, Level 2  
29-31 Solent Circuit  
Norwest NSW 2153

Tel: 61 (02) 9659 5433  
e-mail: [hbi@hbi.com.au](mailto:hbi@hbi.com.au)  
Web: [www.hbi.com.au](http://www.hbi.com.au)

Mr Rob Sherry  
Team Leader Compliance – Government Projects  
Department of Planning Industry and Environment  
Locked Bag 5022  
PARRAMATTA NSW 2124

7 February 2023

Ref:201208-ER\_DPE-January 2023

Dear Rob

**RE: Sydney Metro - Sydney Metro West SSI - ER Monthly Report for January 2023**

Healthy Buildings International (HBI) submits this report to the Secretary in accordance with:

- Condition A30 (k) of the Sydney Metro West, Concept and Stage 1 SSI 10038 Approval (11 March 2021), and associated modifications (MOD 1 - 28 July 2021, MOD 2 - 3 June 2022, MOD3 – 4 July 2022 and MOD4 - 23 December 2022); and
- Condition A32(k) of the Sydney Metro West – The Bays to Sydney CBD SSI 19238057 Approval (24 August 2022).

The attached summary details the key activities undertaken by Environmental Representatives for Sydney Metro – Sydney Metro West for the month of January 2023.

This report is submitted in accordance with an extension granted by DPE on 14 December in relation to SSI 10038.

Yours sincerely

Greg Byrnes  
Environmental Representative

Cc:

Sydney Metro: Matthew Marrinan, John Lerokis, Pamela Tummers, Andrew Hendy, David Virtue, Ari Stypel  
Contractors: Joshua Maltese (Quick way), Jared Lipton (AFJV), Tahlia Moore (Transport for Tomorrow), Steph Mifsud (GLC), Sally Reynolds (JCG)  
DPE: Major Projects Portal



## Table of Contents

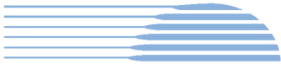
<b>1</b>	<b>Phase A - Power Enabling Works</b>	<b>5</b>
1.1	Key Construction Activities During the Period	5
1.2	Key Construction Activities Look Ahead	5
1.3	ER Inspections	5
1.3.1	Photos	5
1.4	Endorsed Documents	6
1.5	Complaints	6
1.6	Compliance	6
1.6.1	Incidents	6
1.6.2	Non-compliance	6
1.6.3	Audits	6
1.7	Looking Forward – Core Focus Areas	7
<b>2</b>	<b>Phase B - Central Tunnelling Package</b>	<b>8</b>
2.1	Key Construction Activities During the Period	8
2.2	Key Construction Activities Look Ahead	9
2.3	ER Inspections	9
2.3.1	Photos	10
2.4	Endorsed Document/s	11
2.5	Complaints	11
2.6	Compliance	12
2.6.1	Incidents	12
2.6.2	Non-compliance and Potential Non Compliance	12
2.6.3	Audits	12
2.7	Looking Forward – Core Focus Areas	12
<b>3</b>	<b>Phase C - Existing Rail Corridor Enabling Works</b>	<b>13</b>
3.1	Key Construction Activities During the Period	13
3.2	Key Construction Activities Look Ahead	13
3.3	ER Inspections	13
3.3.1	Photos	13
3.4	Endorsed Documents	13
3.5	Complaints	13
3.6	Compliance	14
3.6.1	Incidents	14
3.6.2	Non-compliance	14
3.6.3	Audits	14



3.7	Looking Forward – Core Focus Areas .....	14
<b>4</b>	<b>Phase F – Western Tunnelling Package.....</b>	<b>15</b>
4.1	Key Construction Activities During the Period .....	15
4.2	Key Construction Activities Look Ahead.....	16
4.3	ER Inspections .....	16
4.3.1	Photos .....	16
4.4	Endorsed Document/s.....	18
4.5	Complaints .....	18
4.6	Compliance.....	18
4.6.1	Incidents.....	18
4.6.2	Non-compliance.....	19
4.6.3	Audits .....	19
4.7	Looking Forward – Core Focus Areas .....	19
<b>5</b>	<b>Phase G - Eastern Tunnel Package .....</b>	<b>20</b>
5.4	Endorsed Document/s.....	20
5.5	Complaints .....	20
5.6	Compliance.....	21
5.6.1	Incidents.....	21
5.6.2	Non-compliance.....	21
5.6.3	Audits .....	21
5.7	Looking Forward – Core Focus Areas .....	21
<b>6</b>	<b>Sydney Metro Retained Obligations and Other Activity .....</b>	<b>22</b>
6.1	Key Construction Activities During the Period .....	22
6.2	Key Construction Activities Look Ahead.....	22
6.3	ER Inspections .....	22
6.3.1	Photos .....	22
6.4	Endorsed Document/s.....	22
6.5	Complaints .....	22
6.6	Compliance.....	22
6.6.1	Incidents.....	22
6.6.2	Non-compliance.....	22
6.6.3	Audits .....	22
6.7	Looking Forward – Core Focus Areas .....	23
<b>7</b>	<b>Statement of Limitations.....</b>	<b>24</b>



8 Appendix A – ER Document Endorsement Records ..... 25



## 1 PHASE A - POWER ENABLING WORKS

The Environmental representatives for Phase A of Sydney Metro West are:

- Michael Woolley
- Greg Byrnes

Phase A - Power Enabling Works (PEW) is being delivered by Quickway.

Quickway are not required to hold an Environmental Protection Licence for these works.

### 1.1 Key Construction Activities During the Period

- Sites held by Quickway had been handed over to SM during the October 2022 reporting period.
- Works conducted by Quickway during the month of January 2023 comprised road restoration works in Darling Street; Merton Street; Robert Street and other streets in Rozelle. Some of this work was conducted during daytime hours when ROLs allowed for the work to proceed. Where ROLs were not provided, works were OOHs.

### 1.2 Key Construction Activities Look Ahead

- Completion of all road restoration works for road pavement impacted by the works across the alignment is planned in February.

### 1.3 ER Inspections

One ER/AA Inspection was conducted during the reporting period on 10 January 2023 during road restoration works along Darling Street near Waterloo Street. The works comprised replacement of concrete pavement and provision of a bitumen seal over the concrete. One action related to management of water contained in the concrete trucks was raised and addressed at the time of the inspection. Another action was raised regarding the idling of a delivery truck which was addressed at the time of the inspection. Given road restoration works are nearly complete, no further ER Inspections are planned for Quickway works.

#### 1.3.1 Photos



Figure 1 1 Placing steel mesh in the trench after removal of the temporary pavement.



Figure 1 2 Placing steel mesh in the trench after removal of the temporary pavement.

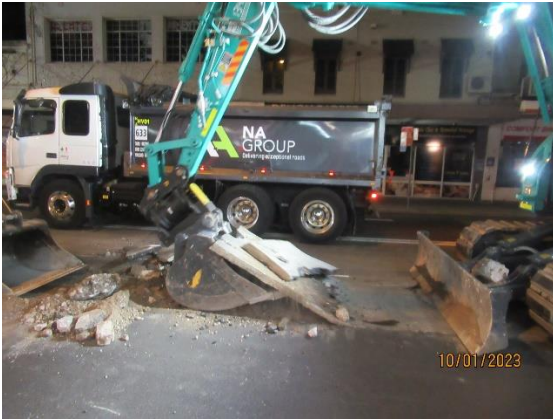


Figure 1 3 Removal of temporary pavement over the alignment of the HV cable.



Figure 1 4 Bulk (dry) concrete trucks on site ready to supply concrete for the final pavement.

#### 1.4 Endorsed Documents

No documents were endorsed during the reporting period. The following updated document was endorsed on 1 February:

- OOHW-014- Darling Street Restoration Works (Rev 2.0) covering line marking works along Darling Street and Merton Street in February 2023.

Quickway notified of a change in dates for OOHW-013(b) – Final Road Restorations – Various Locations; Mullens St – Robert Street intersection towards Mansfield Street and Robert St – From Mullens Street to Bridge Port Access Road which was also approved.

#### 1.5 Complaints

Based on weekly Sydney Metro Complaint Registers provided, three complaints relating to PEW activities were reported during the month. Two of the complaints related to perceived lack of notification of works on a particular night; and one related to property damage.

It is understood that some property damage claims are currently being reviewed by Sydney Metro.

#### 1.6 Compliance

##### 1.6.1 Incidents

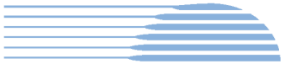
No incidents were reported as per A43 of the Conditions of Approval for SSI 10038 for works conducted under the project approval during the reporting period.

##### 1.6.2 Non-compliance

No Non-Compliance Reports (NCRs) were issued by the Contractor during the reporting period. No events were observed by the ER that was formally determined to represent a non-compliance.

##### 1.6.3 Audits

No audits were conducted during the reporting period.



HBI

Healthy Buildings International Pty Ltd

### **1.7 Looking Forward – Core Focus Areas**

The last of the road restoration works are planned to be completed in February. While these works are ongoing they remain a core focus area.



## 2 PHASE B - CENTRAL TUNNELLING PACKAGE

The Environmental representatives for Phase B of Sydney Metro West are:

- Michael Woolley
- Jo Robertson

Phase B – Central Tunnelling Package (CTP) is being delivered by Acciona Ferroviaria Joint Venture (AFJV). Phase B of Sydney Metro West has been further broken into:

- Phase B1: Civil works
- Phase B2: Tunnelling works

The AFJV hold EPL 21610 for this Phase of works. Activities defined as Phase B2-Tunneling Works in the Staging Report for Metro West commenced during the November 2022 reporting period at Burwood North, with the commencement of Road Header activities to excavate the tunnel to the south shaft (reported by AFJV to be on 21 November 2022).

### 2.1 Key Construction Activities During the Period

#### The Bays

- Ongoing site establishment including FRP for new slabs; commissioning and commencement of operation of the Construction WTP.
- Ongoing use of the haul road for WCX vehicles to access their site without going through the footprint of the station box.
- Ongoing Form Reo Pour (FRP) for spoil shed slab and footings. Some of these works has been conducted OOHs.
- Ongoing excavation of the station box involving use of rock hammers. Removal of spoil from the station box using long reach excavators. Ongoing drilling and stressing of rock anchors at relevant levels within the station box as excavation. Pumping of water from the station box to the temporary WTP.
- Ongoing construction of the Segment Shed frame over the station box using multiple cranes.
- Site offices and compound in operation.
- Handover of the operation of a temporary water treatment plant (WTP) to the Construction WTP.
- Stockpiling and load out of spoil from site during extended work hours.
- Works at the HV kiosk in the former PEW area.
- Construction (trenching) of the TBM water supply pipeline along Robert Street and inside the WBPS area. Much of this work was OOHs.

#### Five Dock

- West shaft: Construction of capping beams and general concreting works for slabs and footings. AFJV advised that they now plan to construct a noise wall around the site (as per the original acoustic shed), however do not plan to construct the high walls and roof of the shed. Further details are still to be provided.
- East Shaft: Ongoing installation of panels on the shed wall and roof. Drilling and placement of rock anchors for the capping beam around the shaft. Ongoing excavation of the shaft and loading of trucks off site. Use of a house on Waterview Street adjacent the eastern shaft site leased from Council.
- Utilities works in local streets.

#### Burwood North





- Completion of road header activities to excavate the adit to the south shaft. Shotcreting and wall support activities for the adit during evening period under EPL OOHWs permit. Lining of the tunnel to continue.
- Commencement of the excavation of the crossover cavern at the western end of the Station Box by road header.
- Ongoing excavation of the station box; stockpiling and load out off site of excavated materials. Wall support such as rock anchor installation. Ongoing construction of the acoustic shed over the station box.
- Use of truck egress to Loftus Street and site access from Parramatta Road.
- Ongoing commissioning of the Water Treatment Plant.
- Use of multi storey site offices.
- Various site establishment activities across the site.
- South Shaft: Completion of wall support for adjacent property. Excavation of soil to allow for construction of piling pad using shale excavated from the north shaft. Driveway construction to Burwood Road during OOHs.

### **North Strathfield**

- Ongoing piling activities on the lower side of the station box.
- Utility and traffic related works in the vicinity of the station box and general area.
- Move footpath on south side of Queen Street to recently constructed concrete pavement.
- Ongoing construction of concrete pavement for future loading area along Queen Street adjacent the site.

### **Sydney Olympic Park**

- Ongoing excavation of the station box using a ripper on a dozer and excavators; drilling; installing and testing rock anchors; shotcreting of walls. Load out of spoil from site using truck and dogs.
- Use of site exit including weighbridge and wheel wash (as deemed to be required) to Figtree Drive. Heavy vehicles entering from Herb Elliot Av.
- Ongoing FRP works for slabs over unsealed areas of the site. The majority of the site is now hardstand.
- Project Office Operating.

Various utility and other works out of hours at most sites.

## **2.2 Key Construction Activities Look Ahead**

- Ongoing activities as described above. Various OOHWs relating to services; road signs and signals, hoarding installation etc at many sites. Activities such as site investigations; utilities related works and site establishment.
- TBM water supply works in Rozelle along Robert St and other streets.

## **2.3 ER Inspections**

There were two ER inspections conducted by the ER on 12<sup>th</sup> and 19<sup>th</sup> January 2023. Inspections were not held on the other weeks due to the Sydney Metro Christmas shutdown and the Australia Day holiday on 26<sup>th</sup> January. Key issues raised during the two inspections included:

### **The Bays:**

- ERSED control maintenance at the LDP and WBPS area
- Dust control in the Spoil Shed area
- Lack of ERSED controls around stockpiles in the former Quickway compound on Robert Street

### **Five Dock:**



- Construction vehicles parking in No Stopping zones on Great North Road and Waterview Street
- Clean up of sediment on footpath after night works

#### Burwood North:

- Road repairs required on Burton and Loftus Streets
- Percussion drill being used during respite period
- Some minor quantities of construction water leaving the South Shaft site
- Maintenance and adequacy of ERSED controls/ muddy ground in area adjacent Parramatta Road

#### North Strathfield

- Weed/vegetation control and management along Queen Street footpath

#### SOP

- Stabilisation of one area downgradient of a stormwater pit.

#### 2.3.1 Photos



Figure 2 1 Ongoing large concrete pours for the Spoil shed foundations and wall supports (The Bays)



Figure 2 2 Ongoing excavation of the station box (The Bays). Water pumped to the WTP.



Figure 2 3 Ongoing excavation of the station box (Burwood North). Ongoing tunnelling in the adit.



Figure 2 4 Ongoing construction of frame of the acoustic shed (Burwood North)



Figure 2-5 Ongoing excavation of the eastern shaft within the acoustic shed (Five Dock-east).



Figure 2-6 Ongoing excavation of the station box (SOP) using dozers and excavators



Figure 2-7 Ongoing piling on the lower side of the station box at North Strathfield

## 2.4 Endorsed Document/s

- OOHW 234 Traffic Set Up: TBM Water Supply Robert Street
- OOHW 239 SOP Electrical Works 8 Herb Elliot Ave
- OOHW 213 TBM Water Supply Construction: Robert Street (Rev 4)
- Sydney Metro West, Central Tunnelling Package Waste Management Plan (SMWSTCTP-AFJ-1NL-WM-PLN-000001 Revision 03 dated 12 December 2021). The revision included addition of a table for estimated spoil quantities at each site.

## 2.5 Complaints

Based on a monthly Sydney Metro Complaint Registers provided for January 2023, there were 13 Complaints relating to AFJV activities reported during the month. Five of the complaints were related to the Burwood site comprising: OOHWs (2); haulage routes (2); debris on road; and noise during standard hours. Three complaints at Five Dock related to: noise and dust from OOHWs; worker behaviour and noise from a street sweeper. Two complaints at North Strathfield related to property damage (car windscreen) and dust and rocks on road. Two complaints received at The Bays for removal of parking on Robert Street and deposited dust on a house. One complaint was received for SOP relating to rock impacting car on the M7, found not to be AFJV related.



## **2.6 Compliance**

### **2.6.1 Incidents**

No incidents considered to represent Incidents as defined under the Project Approval were reported to or observed by the ER. No incidents were reported to the ER under the SM Incident Reporting System.

### **2.6.2 Non-compliance and Potential Non Compliance**

Rock drilling using percussion techniques were observed during the ER Inspection on 19<sup>th</sup> January at Burwood during the nominated respite period. This activity did not appear to be in accordance with Mitigation Measure MMNV19 in Table 9-1 of the CNVMP which states that *“high noise-generating activities...will be carried out in blocks that do not exceed three hours each, with a minimum respite period of one hour between each block.”* This has been discussed with the AA; SM and AFJV. It is understood the AA did not consider the event a Non-Compliance with Condition D36.

No Non-Compliance Reports (NCRs) were issued by AFJV during the reporting period.

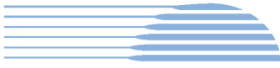
The ER has previously reviewed and made comments on the Six Monthly Monitoring report for the period Jan-June 2022, noting that not all the required information as described in the relevant Monitoring Programs is considered to be contained in the monitoring report. AFJV has stated that the Six Monthly Monitoring Report for the July to December 2022 period will have additional information and be issued soon to Sydney Metro and the ER for review.

### **2.6.3 Audits**

It is understood that the third Independent Environmental Audit (IEA) related to the CTP scope of works is still to be scheduled.

## **2.7 Looking Forward – Core Focus Areas**

- Dust generation at all sites
- Dirt Tracking from Burwood North particularly, and at other sites
- Water Management and ERSED Management specifically at Burwood North, as well as generally at the other sites
- Noise and Vibration management at Five Dock
- Construction Parking around various sites



### **3 PHASE C - EXISTING RAIL CORRIDOR ENABLING WORKS**

The Environmental representatives for Phase E of Sydney Metro West are:

- Greg Byrnes
- Jo Robertson

Phase E – Existing Rail Corridor Works (Brownfield Works) is being delivered by Transport for Tomorrow (TfT).

Transport for Tomorrow are not required to have an EPL for these works.

#### **3.1 Key Construction Activities During the Period**

The PIA has been lifted and works are to recommence with amended programme. The project is expected to be completed on WE40 (2<sup>nd</sup> April).

#### **3.2 Key Construction Activities Look Ahead**

##### **Westmead:**

- WE34 (18-19 Feb 2023): Removal of Aerials and Poles, Road Closures and bus relocations
- WE40 (1-2 April 2023): LV Commissioning and Omission closeout and hand over
- ER and AA to visit site on WE34 (18-19 Feb 2023)

##### **North Strathfield:**

- OOH WE35 (25-26 Feb): Pole 14 terminations, 33kV Commissioning Event at Pole 14 and 14A and Drill Pole 71S and Backfill
- OOH WE38 (18-19 March 2023): Need M4 and Parramatta Rd occupancy, 11kV Jointing and Commissioning, Pole 71S installation and Connection, 11kV and 33kV Aerial removals, Pole Removals and Pole Modifications Poles 1-14
- ER and AA to visit site WE38 (18-19 March 2023)

#### **3.3 ER Inspections**

No ER formal inspections were undertaken during January 2023. However, the ER and AA are scheduled to undertake inspections of the Westmead site works on the WE34 (18-19 Feb 2023) and the North Strathfield on the WE38 (18-19 March 2023)

##### **3.3.1 Photos**

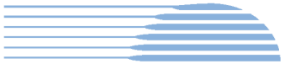
No photos available as no formal inspection were undertaken.

#### **3.4 Endorsed Documents**

No documents were endorsed by the ER in January 2023.

#### **3.5 Complaints**

Based on the complaints register provided to the ER, no complaints were received during the period related to the Existing Rail Corridor Enabling Works being undertaken by TfT.



### **3.6 Compliance**

#### **3.6.1 Incidents**

No incidents were reported as per A43 of the Conditions of Approval for SSI 10038 for works conducted under the project approval during the reporting period.

#### **3.6.2 Non-compliance**

No Non-Compliance Reports (NCRs) were issued by the Contractor during the reporting period. No events were observed by the ER that were determined to represent a non-compliance.

#### **3.6.3 Audits**

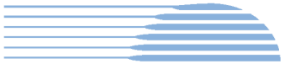
No audits were conducted during the reporting period. The ER conducted Interim Compliance Review reported in October was ongoing.

### **3.7 Looking Forward – Core Focus Areas**

The Tft project team continues to be a highly responsive team and are proactively managing their environmental compliance and approvals.

Key items moving forward continue to remain include:

- Works moving towards completion across ongoing possessions
- Implementation of the CEMP and other Construction documentation required under the SSI approval
- Ongoing cumulative interface with AFJV and GLC at North Strathfield and Westmead, respectively.
- Management of OOH at Westmead and North Strathfield



## 4 PHASE F – WESTERN TUNNELLING PACKAGE

The Environmental Representatives for Phase F of Sydney Metro West are:

- Greg Byrnes
- Swathi Gowda

Phase F – Western Tunnelling Package (WTP) is being delivered by Gamuda Australia Laing O’Rourke Consortium (GLC).

GLC are constructing this Phase of Sydney metro West under EPL 21676.

### 4.1 Key Construction Activities During the Period

Construction activities are continuing at multiple sites across the WTP with the excavation of the TBM Launch box excavation at Rosehill, piling at Westmead and Guide Wall commencement at Parramatta. The following activities were undertaken at the Westmead, Parramatta, Rosehill, Clyde Dive and Clyde MSF sites during January 2023:

#### Westmead

- Station box piling works continued in January with approximately 80% being completed
- The Parramatta to Westmead HV cable conduit installation is continuing outside approved construction hours under the EPL provisions
- Spoil Stockpile management including storage, classification and removal from site.

#### Parramatta

- Archaeological investigations on the Church Street sides of the site
- Sewer relocation from inside the station box to outside continuing, including an underbore
- Spoil Stockpile management including storage, classification and removal from site
- D-wall and Bentonite Plant preparation including Bentonite Plant bunded area
- The excavation and concrete works associated with the Guide Wall commenced in January.

#### Clyde Dive

- Heritage pedestrian bridge relocation was completed in January
- Haul road and pedestrian access construction, this involves earthworks and concrete pavement
- Continuation of shaft excavation in the northern end of the site.
- Spoil management including movement around site, stockpiling, segregation and classification. Spoil is being transferred to the Clyde MSF by Moxy and crossing Unwin Street
- Acid Sulfate Soil storage and treatment areas
- Acoustic shed construction
- The construction of the noise wall between the ATC and Clyde Dive has commenced

#### Rosehill

- Excavation of TBM launch box
- Spoil management including segregation, classification, and disposal. This includes the treatment of Acid Sulfate Soil
- Temporary Water Treatment Plant operation with discharge to Duck River
- Construction of Spoil Shed continuing.
- Long term water treatment plant mobilisation and assembly.



## Clyde MSF

- Water main and utilities trenching adjacent to the M4 and across Tennyson Street
- The sheet piling for the water conveyance structure continuing.
- Spoil management including segregation, classification and disposal, including An Acid Sulfate soil treatment.

### 4.2 Key Construction Activities Look Ahead

The key construction activities planned for February 2022 are similar to those listed in Section 4.1.

### 4.3 ER Inspections

Three ER inspections were conducted in January 2023 (11/01/2023, 18/01/2023, and 25/01/2023,). A total of 214.6mm of rain fell during January 2023. Three rainfall events triggered additional site inspections (1/1/23 30.6mm, 7/1/23 51mm and 31/1/2023 43mm). The ER Inspections following these events focused on the implementation of the PESCPs. In total nine actions were raised across the WTP in January. The key issues were Spoil stockpile management and implementation of PESCPs.

The actions and key issues raised at the inspections were:

- **Rosehill** – The Rosehill site is being managed adequately, with spoil management especially ASS is continuing to be a focus area for GLC and the ER at the Rosehill site. Three actions were raised for ASS management, chemical storage and concrete washout
- **Clyde MSF** - This site is being managed well with two actions raised, one for chemical storage and one action for spoil stockpile management.
- **Parramatta** – This site is being managed well with the key activities being archaeology investigations and site preparation for the D-Wall construction. No actions were raised in January.
- **Westmead** – The Westmead site is being managed well with two minor actions raised.
- **Clyde Dive Site** – One action was raised on the implementation of the PESCPs pre rainfall

#### 4.3.1 Photos



Figure 4.1: Westmead Site - Haul Road Construction



Figure 4.2: Westmead – Station box piling





Figure 4.3: Parramatta site – Guide Wall excavation and concrete works.



Figure 4.4: Parramatta site – Bentonite Plan mobilisation



Figure 4.5: Parramatta Site – archaeology investigations adjacent to Church Street



Figure 4.6: Parramatta Site – eighteenth century artefacts



Figure 4.7: Clyde Dive site – heritage bridge relocation



Figure 4.8: Clyde Dive site - Acoustic Shed construction



Figure 4.9: Rosehill site – long term water treatment plant assembly



Figure 4.10: Rosehill site – TBM launch box excavation



Figure 4.11: Clyde MSF site – Duck River sheet piling



Figure 4.12: Clyde MSF – Spoil storage with sed controls

#### 4.4 Endorsed Document/s

The following documents were endorsed by the ER during the reporting period.

- Sydney Metro West – Western Tunnelling Package: Soil and Water Management Plan (Rev E)

#### 4.5 Complaints

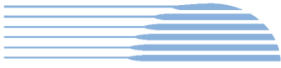
Four complaints related to the WTP were provided to the ER during January 2023.

- **Westmead** – Three complaints; two complaints (!7 and 18/1/2023) related to noise and vibration during approved daytime construction hours. These two complaints were adequately addressed. The third complaint related to a loose road plate that damaged a car tyre. The third complaint was for a loose road plate from the Parramatta to Westmead HV works. The road plate was secured and under Emergency Works.
- **WTP** – A complaint was received about a vehicle with WTP Project identification driving dangerously. Following an investigation, the driver was stood down.

#### 4.6 Compliance

##### 4.6.1 Incidents

No incidents were reported to the ER under the SM Incident Reporting System. No incidents considered to represent Incidents as defined under the Project Approval were reported to or observed by the ER.



#### **4.6.2 Non-compliance**

One Non-compliance occurred during the reporting period related to WTP works.

- On the 18/1/2023 a concrete pour at the Westmead site, supporting bored piling works, continued outside of standard construction hours. This is a non-compliance with Section 6.4.3 of the Project's Noise and Vibration Management Plan and therefore also under Ministers Conditions of Approval (CoA) D35, D37(c)(i). No complaints related to this event were received by the ER.

#### **4.6.3 Audits**

No audits were undertaken during the reporting period

#### **4.7 Looking Forward – Core Focus Areas**

GLC are managing their environmental risk and compliance adequately. The ER inspections and compliance monitoring focused on the implementation of Progressive Erosion and Sediment Control Plans and ASS treatment and storage.

The core focus areas for the coming month are:

- Noise management, especially at Westmead and the Clyde Dive site
- Spoil management, especially the storage and stockpiling measures
- Acid Sulfate soil storage and treatment.



## 5 PHASE G - EASTERN TUNNEL PACKAGE

The Sydney Metro West Eastern Tunnel Package is Stage 2 of the Sydney Metro West CSSI and is described as major civil construction works between The Bays and Sydney CBD, including station excavation at Pyrmont and Hunter Street and tunnel excavation between the Bays and Hunter Street. Stage 2 (SSI 19238057) was approved on the 24 August 2022.

The Environmental Representatives for the Sydney Metro West Eastern Tunnel Package are:

- Michael Woolley
- Greg Byrnes
- Jo Robertson

The Eastern Tunnelling Package (ETP) is being delivered by John Holland CPB Ghella Joint Venture (JCG) with the contract being awarded in November 2022.

JCG are in the process of applying for a project EPL.

### 5.1 Key Activities During the Period

The JCG is currently working through the pre-construction project approval process and Low Impact Works (LIW) applications. Minor LIWs commenced in January 2023 comprising archival recording and Pre-Construction Surveys.

The ER team has received and provided comments on the following project documents:

- Detailed Noise and Vibration Impact Statement
- Preliminary CEMP Rev 1
- Preliminary CEMP Rev 2
- Noise and Vibration Management Plan including Monitoring Program
- Soil and Water Management Plan including Surface and Ground water Monitoring Plans
- Air Quality Management Plan
- Waste Management Plan
- Heritage Management Plan
- Flora and Fauna Management Plan
- Visual Amenity Management Plan
- Spoil Management Plan
- Low Impact Works Application 01 - Archival Recording (ER review only)
- Low Impact Works Application 02 – Pre-Construction Condition Surveys (ER review only)

### 5.2 Key Construction Activities Look Ahead

Construction is scheduled to commence in April 2023

### 5.3 ER Inspections

No ER inspections were conducted in January 2023.

#### 5.3.1 Photos

As no ER inspections were conducted in January 2023, there are no relevant photos to present as part of this report.

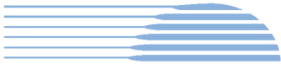
### 5.4 Endorsed Document/s

The Phase G1 Phasing Report (Early Works) was endorsed by the ER and lodged with DPE in December 2022. The approach outlined in the Early Works Phasing Report was presented to DPE during December 2022.

In accordance with CoA A32(d)iii the written statement endorsing the above document is provided in Appendix A.

### 5.5 Complaints

No complaints related to the ETP were provided to the ER during January 2023.



## **5.6 Compliance**

### **5.6.1 Incidents**

No incidents were reported to the ER under the SM Incident Reporting System.

### **5.6.2 Non-compliance**

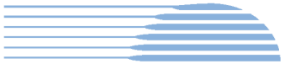
No Non-compliances occurred during the reporting period related to ETP works.

### **5.6.3 Audits**

No audits were undertaken during the reporting period.

## **5.7 Looking Forward – Core Focus Areas**

In February 2023, the ER Team will be focused on reviewing Environmental Management Systems and other documentation as provided and assessing the documents for compliance with the project approval requirements.



## **6 SYDNEY METRO RETAINED OBLIGATIONS AND OTHER ACTIVITY**

The Environmental Representatives for the Sydney Metro Retained Obligations and other Activities are:

- Jo Robertson
- Greg Byrnes

The Sydney Metro Retained Obligations and other Activities is being delivered by Sydney Metro with various sub-contractors delivering the works. These works do not require an EPL.

### **6.1 Key Construction Activities During the Period**

The ER is not aware for other Sydney Metro managed construction activities during the period.

### **6.2 Key Construction Activities Look Ahead**

The ER is not aware for other Sydney Metro managed construction activities during the period

### **6.3 ER Inspections**

There were no ER inspections of this work during the reporting period.

#### **6.3.1 Photos**

None

### **6.4 Endorsed Document/s**

No Sydney Metro documents were endorsed during the reporting period.

### **6.5 Complaints**

No complaints have been reported to the ER in relation to the investigations previously conducted for Sydney Metro.

### **6.6 Compliance**

#### **6.6.1 Incidents**

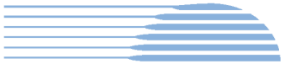
No incidents have been reported to the ER in relation to the investigations previously conducted for Sydney Metro.

#### **6.6.2 Non-compliance**

No non compliances have been reported to the ER in relation to the investigations previously conducted for Sydney Metro.

#### **6.6.3 Audits**

No audits were conducted during the reporting period.



## **6.7 Looking Forward – Core Focus Areas**

A risk workshop is held monthly with the ERs and the Sydney Metro Environment team to discuss contractor performance, environmental risk and identify key focus areas for the upcoming month. This process is continuing.



## **7 STATEMENT OF LIMITATIONS**

Healthy Buildings International (HBI) has prepared this report in accordance with the requirements of Condition A30(k) of the Sydney Metro West, Concept and Stage 1 SSI 10038 Approval (11 March 2021), and Condition A32(k) of the Sydney Metro West – The Bays to Sydney CBD SSI 19238057 Approval (24 August 2022).

The report is for the sole purposes of Department of Planning and Environment (DPE) and Sydney Metro. It has been prepared based on generally accepted practices and standards at the time it was prepared. No other warranty, expressed or implied, is made as to the professional advice included in this Report. This report did not assess any aspects relating to safety.

Where the Report indicates that information has been provided to HBI by third parties, HBI assumes no liability for any inaccuracies in or omissions to that information.

This Report was prepared based on the conditions encountered and information reviewed at this time. HBI disclaims responsibility for any changes that may have occurred after this time.

This Report should be read in full. No responsibility is accepted for use of any part of this report in any other context or for any other purpose or by third parties. This Report does not purport to give legal advice. Legal advice can only be given by qualified legal practitioners.

Except as required by law, no third party may use or rely on this Report unless otherwise agreed by HBI in writing. Except as specifically stated in this section, HBI does not authorise the use or findings of this Report by any third party

To the extent permitted by law, HBI expressly disclaims and excludes liability for any loss, damage, cost or expenses suffered by any third party relating to or resulting from the use of, or reliance on, any information contained in this Report. HBI does not admit that any action, liability or claim may exist or be available to any third party.





HBI Healthy Buildings International Pty Ltd

## **8 APPENDIX A – ER DOCUMENT ENDORSEMENT RECORDS**

Mr Ben Armstrong  
Director Environment, Sustainability and Planning  
Metro West  
Sydney Metro  
PO Box K659  
HAYMARKET NSW 1240

24 January 2023

Ref: 201208 STG2G1 PHASINGRPT R1.2

Dear Ben

**RE: Endorsement of the Phasing Report – Sydney Metro West, Stage 2, Phase G1, R1.2**

Thank you for providing the *Sydney Metro West Stage 2 – Phasing Report, Rev 1.2, January 2022* for Environmental Representative (ER) required by Condition of Approval A14 of the Sydney Metro West – The Bays to Sydney CBD Approval (SSI 1923805, 24 August 2022).

In the development of this report, as ER I have provided comment on the Phasing Report Rev 1.0 with respect to the risk assessment required under A14(d) and how it informs Conditions C2, C7 and C18. In particular, the risk context, the level of inherent risk, and the level of likely mitigated risk post implement of various system controls, as well as the proposed application of the CEMF framework commensurate with risk. This was generally consistent with the approach taken previously on other Sydney Metro projects. Further I sought input from the Acoustic Advisor (AA) regarding the noise and vibration aspects of the risk assessment including potential vibration impacts on heritage structure and the AA also supports the included risk assessment.

Revision 1.0 was presented to the Department of Planning and Environment with comments sought. Feedback was received from the Department on 19 January 23. This Revision 1.2 also incorporates the feedback received, including:

- Update to allow the future location of the investigation works
- Update to the timing of Phase G1 beginning
- Update to the applicability of key deliverables (Table 7)

It should be noted that the ER review of risks and the allocation of requirements is based on information known to the ER at the time of review and may be subject to update as the project evolves.

As an approved ER for the project under Condition A10, in accordance with Condition A32(d), I endorse this document as consistent with the requirements under the Approval and is appropriate for submission to the Planning Secretary.

Yours sincerely

A handwritten signature in black ink, consisting of a large, stylized 'J' followed by a horizontal line that tapers to the right.

Jo Robertson  
Environmental Representative – Sydney Metro