

Mr Rob Sherry  
Team Leader Compliance – Government Projects  
Department of Planning and Environment  
Locked Bag 5022  
PARRAMATTA NSW 2124

7 September 2023

Ref:201208-ER\_DPE-August 2023

Dear Rob

**RE: Sydney Metro - Sydney Metro West SSI - ER Monthly Report for August 2023**

Healthy Buildings International (HBI) submits this report to the Secretary in accordance with:

- Condition A30 (k) of the Sydney Metro West, Concept and Stage 1 SSI 10038 Approval (11 March 2021), and associated modifications (MOD 1 - 28 July 2021, MOD 2 - 3 June 2022, MOD3 – 4 July 2022 and MOD4 - 23 December 2022); and
- Condition A32(k) of the Sydney Metro West – The Bays to Sydney CBD SSI 19238057 Approval (24 August 2022).

The attached summary details the key activities undertaken by Environmental Representatives for Sydney Metro – Sydney Metro West for the month of August 2023.

Yours sincerely



Greg Byrnes  
Environmental Representative

Cc:

Sydney Metro: Matthew Marrinan, John Lerokis, Pamela Tummers, Andrew Hendy, Cath Snelgrove , Ari Stypel, Ben Armstrong, Sarah Kemp  
Contractors: Jared Lipton (AFJV), Steph Mifsud (GLC), Sally Reynolds (JCG)  
DPE: Major Projects Portal



## Table of Contents

<b>1</b>	<b>Phase B - Central Tunnelling Package</b>	<b>4</b>
1.1	Key Construction Activities During the Period	4
1.2	Key Construction Activities Look Ahead	5
1.3	ER Inspections	5
1.3.1	Photos	6
1.4	Endorsed Document/s	7
1.5	Complaints	8
1.6	Compliance	8
1.6.1	Incidents	8
1.6.2	Non-compliance and Potential Non Compliance	8
1.6.3	Audits	9
1.7	Looking Forward – Core Focus Areas	9
<b>2</b>	<b>Phase F – Western Tunnelling Package</b>	<b>10</b>
2.1	Key Construction Activities During the Period	10
2.2	Key Construction Activities Look Ahead	11
2.3	ER Inspections	11
2.3.1	Photos	12
2.4	Endorsed Documents	13
2.5	Complaints	14
2.6	Compliance	14
2.6.1	Incidents	14
2.6.2	Non-compliance	14
2.6.3	Audits	14
2.7	Looking Forward – Core Focus Areas	14
<b>3</b>	<b>Phase G - Eastern Tunnel Package</b>	<b>15</b>
3.4	Endorsed document/s	18
3.5	Complaints	18
3.6	Compliance	18
3.6.1	Incidents	18
3.6.2	Non-compliance	18
3.6.3	Audits	19
3.7	Looking Forward – Core Focus Areas	19
<b>4</b>	<b>PHASE H - Westmead Telstra and Jemena Gas Relocation</b>	<b>20</b>
4.1	Key Construction Related Activities During the Period	20
4.1	Key Construction Activities Look Ahead	20



4.2	ER Inspections .....	20
4.2.1	Photos .....	20
4.3	Endorsed Document/s.....	20
4.4	Complaints .....	20
4.1	Compliance.....	20
4.1.1	Incidents.....	20
4.1.2	Non-compliance.....	20
4.1.3	Audits .....	21
4.2	Looking Forward – Core Focus Areas .....	21
5	Sydney Metro Retained Obligations and Other Activity .....	22
5.1	Key Construction Activities During the Period .....	22
5.2	Key Construction Activities Look Ahead.....	22
5.3	ER Inspections .....	22
5.3.1	Photos .....	22
5.4	Endorsed Document/s.....	22
5.5	Complaints .....	22
5.6	Compliance.....	22
5.6.1	Incidents.....	22
5.6.2	Non-compliance.....	22
5.6.3	Audits .....	22
5.7	Looking Forward – Core Focus Areas .....	23
6	Statement of Limitations.....	24
7	Appendix A – ER Document Endorsement Records (ETP only).....	25



## 1 PHASE B - CENTRAL TUNNELLING PACKAGE

The Environmental Representatives for Phase B of Sydney Metro West are:

- Michael Woolley
- Greg Byrnes
- Jo Robertson

Phase B – Central Tunnelling Package (CTP) is being delivered by Acciona Ferroviol Joint Venture (AFJV). Phase B of Sydney Metro West has been further broken into:

- Phase B1: Civil works
- Phase B2: Tunnelling works

The AFJV hold EPL 21610 for this Phase of works. Activities defined as Phase B2-Tunneling Works in the Staging Report for Metro West commenced during the November 2022 reporting period at Burwood North.

### 1.1 Key Construction Activities During the Period

#### The Bays

- Ongoing operation of two TBMs including support activities such as the grout plant; deliveries of segments (24/7); works inside the acoustic shed.
- Use of conveyor system to remove spoil from the TBMS in the station box and load spoil into the spoil shed. Storage of spoil in the shed and load out of trucks within the shed.
- Ongoing operation of the Construction Water Treatment Plant.
- Installation of netting in the station box to provide a barrier between the CTP and ETP sections of the station box.

#### Five Dock

- West shaft: Ongoing excavation of rock from the shaft using a surface miner for the base and excavators with hammers for walls and edges. Breakthrough of Central Cavern into the western shaft – covered with brattice (reinforced plastic sheet). Load out of material by trucks during standard construction hours using two exits. One load out point uses a telescopic excavator to load trucks and the other uses a kibble. Trucks reverse into both load out points under traffic control.
- Commencement of the excavation of the western cavern from the western wall of the shaft using a road header. Support for this work including setup and operation of a scrubber and related ventilation system in the base of the excavation. AFJV reported that this activity is only conducted during standard construction hours.
- East Shaft: Excavation of the eastern cavern by rock hammer and road header. Loading of trucks using either a telescopic excavator or kibble on the gantry crane. Storage of some spoil inside the acoustic shed for later load out on trucks. Ongoing use of a house on Waterview Street adjacent the eastern shaft for project offices. Ongoing ventilation from the shed from scrubbers in the cavern after relocation of the vents to the roof.
- Operation of the Water Treatment Plant at the east site.



## Burwood North

- Form, Reo Pour (FRP) for the base of the Cross Over cavern involving very large volume pours. This has required early starts and late finishes under OOHs permits. Numerous concrete trucks involved unloading within the shed and exiting to Burton Street.
- Ongoing excavation of the station box and stockpiling and load out off site of excavated materials. Wall support, such as rock anchor installation. Trucks entering site through acoustic shed from Parramatta Road with load out point adjacent to Parramatta Road outside the shed.
- Ongoing Nozzle excavation on the eastern face of the station box. This has involved set up of a temporary brattice cover at the south end of the station box and set up and operation of a scrubber unit (daytime hours only).
- Operation of the Water Treatment Plant
- Use of multi storey site offices
- South Shaft: Ongoing bulk excavation from the shaft using excavators. Wall support including drilling and installing anchors as well as shotcrete. Use of truck turntable with truck access from Burwood Road.

## North Strathfield

- Bulk excavation continued from steel platforms adjacent the slip lane alongside Queen Street. Drilling and stressing of rock anchors; wall support with shotcrete. A dozer has been used to rip the rock with a profiler on the walls. Use of rock hammers is now planned when needed. Load out of spoil onto trucks in the slip lane.
- Use of hoarding/traffic barrier along outside edge of new slip lane pavement to separate it from Queen Street.

## Sydney Olympic Park

- Ongoing excavation of the station box using a ripper on a dozer and excavators. Other works in the station box includes drilling, installing and testing rock anchors and shotcreting of walls.
- Load out of spoil using truck and dogs.
- Emergency works undertaken after movement of a section of the station box wall was detected. This involved temporary works comprising placement of spoil against the base of the affected wall and installation of new anchors/whaler beam. A permanent design was completed involving new rock anchors and concrete works which commenced prior to the end of the reporting period.
- Works to excavate and construct nozzle sections at western and eastern ends of the station box. Use of concrete pumping area for this work.
- Use of site exit including weighbridge and wheel wash (as deemed to be required) to Figtree Drive. Heavy vehicles entering from Herb Elliot Avenue.
- Project Office Operating.

### 1.2 Key Construction Activities Look Ahead

- Ongoing activities as described above.
- Cross passage construction.
- Various OOHs (conducted under the EPL).

### 1.3 ER Inspections

There were five ER inspections conducted on each Thursday during August 2023, with sites being inspected on an alternating basis, except for Five Dock which was inspected weekly. Key issues raised during the inspections included:

#### The Bays:



- Better seal the spoil shed wall adjacent the offices to prevent any runoff or turbid water exiting the shed.
- Ensure all fuel and chemicals are stored with secondary containment.
- Ensure wash water from the sweeper truck is directed to treatment and not to stormwater.

**Five Dock:**

- Ensure all spoil trucks have signage to meet the requirements of Condition A47.
- Ensure all heavy vehicles including spoil trucks at Five Dock east follow the approved routes in the CTMP (see NCR025 discussed below).

**Burwood North:**

- Clean dirt at exits at BN and ensure no tracking of dirt occurs onto Parramatta Road.
- Better manage the concrete wash area at BN to keep it separate from the haul road so trucks do not drive through the wastes.

**North Strathfield**

- Replace a broken sediment bag placed at a drain on Queen Street.
- Clean hardstand at the western end of the station box.

**Sydney Olympic Park**

- Augment water controls in the area of the concrete pump at the western end concrete works to better contain wash water on site.
- Pump out water accumulated in the concrete pump area to the WTP for treatment.

The majority of the above actions have been closed out.

**1.3.1 Photos**



Figure 1 1 Base of the station box showing conveyors exiting tunnels (The Bays) and TBM support activities.



Figure 1 2 Spoil stockpile within the spoil shed. (The Bays).



Figure 1.3 Concrete pour underway in the Cross Over Cavern at the western end of the station box (Burwood North).



Figure 1.4 Station Box excavation works. (Burwood North)



Figure 1.5 Central cavern. (Five Dock-east).



Figure 1.6 Commencement of excavation of the western cavern using road header (Five Dock-west).



Figure 1.7 Excavation of spoil using steel platforms; wall support. (North Strathfield)



Figure 1.8 Excavation of the Station Box (SOP). Construction of nozzles in the western end.

#### 1.4 Endorsed Document/s

- Nil documents were endorsed during the reporting period.

Various documents including revised DNVISs at Five Dock, Burwood North and SOP were reviewed during the period with comments closed out based on Consistency Assessments provided by SM. Some revised Management Plans were also provided for review.



## 1.5 Complaints

Based on a monthly Sydney Metro Complaint Registers provided for August 2023, there were 21 complaints reported during the month, with one of the reported complaints identified as not related to AFJV activities. This compared to 13 complaints reported for the previous month.

Fifteen of the complaints related to the Five Dock site; seven of which were from one resident. Complaints at Five Dock related to: dust (1); OOHWs consultation (1); trucks parked in a service station (1); property damage claim process (1); ground born noise (2, of which one was not related to Sydney Metro); pedestrian safety (1); extent of OOHWs (1); pothole (1); an alarm going off during the night time period (3); OOHWs (1); the complaints management process (1) and signs impeding the footpath (1).

Some of the complaints were still under investigation at the end of the reporting period.

Four complaints were received at Burwood North relating to: dust (1); noise from street sweeper (1); cement trucks not following approved heavy vehicle route (1 – as noted below has been reported as a Non-Compliance NCR 028); parking around the north site (1); and noise from OOHWs (1).

Reviews of cars parking Burton Street and Burwood Ave during ER inspections shows that there is generally parking spaces available on the street. Dust tracking has been raised during ER Inspections.

One complaint was received at North Strathfield relating to OOHWs. The stakeholder had recently moved into the property and had not received the notification.

One complaint was received for The Bays relating to a truck driving in a dangerous manner.

No complaints were received at SOP during the reporting period.

## 1.6 Compliance

### 1.6.1 Incidents

No incidents considered to represent Incidents as defined under the Project Approval were reported to or observed by the ER.

One incident was reported by AFJV regarding a small oil spill at Burwood North. AFJV reported that the spill was contained on site and promptly cleaned up.

### 1.6.2 Non-compliance and Potential Non Compliance

The following Non-Compliance Reports were provided to the ER during the reporting period (text taken from the reports):

- NCR 025: Five Dock. Park Road. On 10 August 2023 at 11:50am a truck was sighted travelling southward on Park Road, Five Dock. This was witnessed during an ER inspection and the traffic warden also identified the driver on an unapproved haul route. This section of Park Road is not part of the approved haul route in the Five Dock Construction Traffic Management Plan.
- NCR 026: On the night of Monday 31 July 2023 oversized plant were delivered to the North Strathfield site under out of hours work permit 133. During review of the previous OOHW permits on 14 August 2023, AFJV discovered the work was carried out under OOHW permit 133 which had expired and did not reflect the task undertaken on the night. A complaint was received by a resident on Queens Road who did not receive notification due to them moving into the property on the weekend prior to the work.





- NCR027: The Five Dock Construction Traffic Management Plan (CTMP) Rev 8 was the approved revision of the CTMP for Five Dock during May 2023. This version of the CTMP permitted 12 heavy vehicle movements (6 trucks) per hour at Five Dock west site between 7am and 10am (AM peak hour); and 4pm and 6pm (PM peak hour). On several days in May 2023, truck movements at Five Dock West exceeded the CTMP numbers during peak hours in the approved CTMP. AFJV became aware of the Non-Compliance whilst reviewing data on the 18 August 2023. The CTMP Rev 8 permitted a total of 230 truck movements (115 trucks) per day. This number was not exceeded on any of these days with the maximum total number of trucks movements ranging from 92 to 180.
- NCR028: On 22 August 2023, a verbal complaint was received by an AFJV employee at Burwood North. The resident reported two separate events relating to cement trucks obstructing driveways and Lansdowne Street. On 24 August 2023 between approximately 1:30pm and 2:15pm, an AFJV team member observed a concrete truck driving on Broughton Street, Concord. Lansdowne Street and Broughton Street are not part of the approved haul route in the Burwood North Construction Traffic Management Plan.

It is understood that OOHs noise levels at Five Dock with respect to the requirements of the DNVIS was under investigation by Sydney Metro and the AA's in conjunction with AFJV.

### **1.6.3 Audits**

The third Independent Environmental Audit on the Sydney Metro West, Concept and Stage 1 SSI 10038 Approval commenced on the 30 August 2023 with the Opening Meeting. The ER was interviewed by the auditors on the 4 September 2023.

### **1.7 Looking Forward – Core Focus Areas**

- Dust generation at all sites during dry weather
- Dirt Tracking onto roads from all sites
- Noise and Vibration management at Five Dock and Burwood North
- Traffic Management at Five Dock.



## 2 PHASE F – WESTERN TUNNELLING PACKAGE

The Environmental Representatives for Phase F of Sydney Metro West are:

- Greg Byrnes
- Swathi Gowda

Phase F – Western Tunnelling Package (WTP) is being delivered by Gamuda Australia Laing O’Rourke Consortium (GLC).

GLC are constructing this Phase of Sydney metro West under EPL 21676.

### 2.1 Key Construction Activities During the Period

During August, construction activities continued at all WTP sites, including the excavation of the Clyde Dive, station box at Westmead, and Diaphragm Wall construction at Parramatta. The TBM commenced tunnel excavation at Rosehill in August. The following activities were undertaken at the Westmead, Parramatta, Rosehill, Clyde Dive and Clyde MSF sites during August 2023:

#### Westmead

- Station box excavation, rock bolts and shotcrete.
- Spoil from the Station Box is pre classified and being transferred straight off site.
- Acoustic Shed assembly over station box
- Water Treatment Plant commissioning
- Road Header excavation at the eastern end of the Station Box (24hrs/5days)

#### Parramatta

- Archaeological investigations
- Bentonite Plant operation
- Diaphragm wall (D-Wall) excavation with two cutters and one Grab with spoil being transferred to MSF
- The D-Wall construction is undertaken outside standard construction hours
- Water Treatment Plant assembly
- Water Treatment plant discharge line installation along George Street outside standard construction hours

#### Clyde Dive

- Horizontal tunnelling with Road header from the tunnel shaft. The road header is now under receivers on the west side of James Ruse Drive
- Spoil management including transfer to the Clyde MSF site by Moxy and crossing Unwin Street
- Clyde dive excavation. Rock is expected at 8m BGL dozer and hammer will be required. Spoil (ASS) going to MSF East for treatment and placement in Speedway

#### Rosehill

- TBM 1 has commenced tunnel excavation.
- TBM 2 is being assembled on the surface and lifted into the box
- Spoil from the TBM excavation is being removed from the box via a kibble and stockpiled in the Spoil Shed.
- Long term water treatment plant is operational and receiving water from Clyde Dive and Clyde MSF



- Solar Farm is being assembled and commissioned
- Grout Plant commissioning

### Clyde MSF

- Water main and utilities trenching adjacent to the M4 and along Duck Creek
- Unwin Street diversion construction including piling and bridge works
- Duck Creek and A'Becketts Creek low flow diversion channel excavation and rock armour placement
- Spoil management including stockpiling, segregation, classification and movement around site. This includes Acid Sulfate soil treatment
- Back filling of the Parramatta Speedway site
- Removal of the asbestos contaminated former speedway grandstand earth mound

### 2.2 Key Construction Activities Look Ahead

The key construction activities planned for September 2023 are similar to those listed in Section 3.1 With the addition of the following:

- Temporary diversion of Duck and A'Becketts Creek via coffer dams and pumps to allow for the preparation of the long term creek diversion

### 2.3 ER Inspections

Five ER inspections were conducted in August 2023 (2/08/2023, 9/08/2023, 16/08/2023, 23/8/2023 and 30/07/2023). A total of 45.2 mm (Parramatta BOM) of rain fell during August 2023, compared to a monthly average for August of 55 mm. In total six actions were raised across the WTP in August. The actions and key issues raised at the inspections were:

- **Rosehill** – The Rosehill site is being managed well. However, two actions were raised. During the ER inspection a sweeper truck was observed discharging waste in an uncontrolled area and three 1000L chemical containers were unbanded and not labelled.
- **Clyde MSF** - This site currently presents the highest environmental risk for GLC with sediment controls being the key focus area for this site. During an ER inspection, two actions were raised for inadequate stockpile management, including Acid Sulfate soil.
- **Parramatta** – The Parramatta site is being managed well with no actions raised in August. The excavation of the D-Wall presents an elevated risk for GLC and remains a key focus area for this site.
- **Westmead** – The Westmead site is being managed well with one action raised in August. During the ER Site Inspection concrete hammering was being undertaken on Bailey Street during standard construction hours with inadequate noise mitigation in place. Noise and vibration outside standard construction hours present an elevated risk for GLC and remains a key focus area for this site.
- **Clyde Dive** – This site is being managed well with one action raised in August. During the ER inspection a hydraulic oil spill was identified by the ER, the spill had migrated into the erosion and sediment controls during recent rainfall.



2.3.1 Photos



Figure 2.1: Westmead Site –Acoustic shed construction nearing completion



Figure 2.2: Westmead site – Station Box excavation with acoustic shed construction



Figure 2.3: Westmead Site – layback removal on Bailey Street with inadequate noise mitigation



Figure 2.4: Westmead site – layback removal on Bailey Street with improved noise mitigation



Figure 2.5: Parramatta Site – D-Wall excavation with cutter adjacent to Roxy Theatre

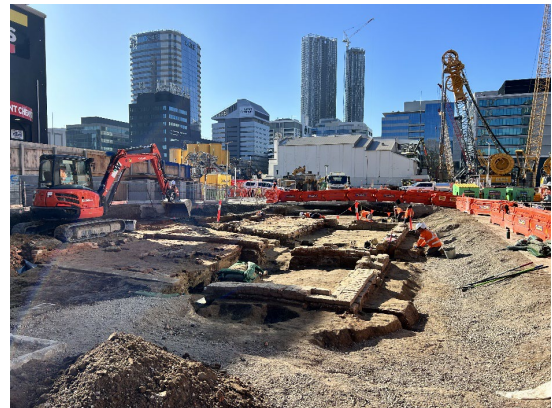


Figure 2.6: Parramatta Site – Archaeological investigations



Figure 2.7: Clyde Dive site – Dive Structure excavation along the ATC boundary



Figure 2.8: Clyde Dive site – Hydraulic oil spill in sediment controls



Figure 2.9: Rosehill Site – TBM spoil being stored in spoil shed



Figure 2.10: Rosehill Site – 50L/s Water Treatment Plant operating



Figure 2.11: Clyde MSF Site – MSF East gate



Figure 2.12 – Clyde MSF Site – Duck Creek diversion construction with rock armour

## 2.4 Endorsed Documents

No documents were endorsed by the ER during the reporting period.



## 2.5 Complaints

Four complaints related to the WTP were provided to the ER during August 2023. These complaints are summarised below:

- **Westmead** – Two complaints: The (21/8/2023) complaint related to a pothole on Hawkesbury Road. The (22/8/2023) complaint related to potholes and road surface deterioration on Hawkesbury Road, Alexandra Avenue and Hasell Street. Following an investigation, the potholes and road surface deterioration was located on the approved WTP haulage route but not directly linked to Sydney Metro works.
- **Clyde Stabling Facility** – One complaint: The (15/8/2023) complaint related to cars belonging to employees from their workplace being covered in dust from trucks travelling on Wentworth Street. GLC contacted the complainant and informed them of the measures being implemented to minimise dust and mud tracking. The ER will continue to focus on the implementation of these measures.
- **Parramatta** – One complaint: The (17/8/2023) complaint related to a business being blocked from access to their parking spot. GLC investigated and determined that the access should not have been blocked and apologised to the business.

## 2.6 Compliance

### 2.6.1 Incidents

No incidents considered to represent Incidents as defined under the Project Approval were reported to or observed by the ER during the reporting period.

### 2.6.2 Non-compliance

No Non-Compliance Reports (NCRs) were issued by the Contractor during the reporting period.

### 2.6.3 Audits

The third Independent Environmental Audit on the Sydney Metro West, Concept and Stage 1 SSI 10038 Approval commenced on the 30 August 2023 with the Opening Meeting. The ER was interviewed by the auditors on the 4 September 2023.

## 2.7 Looking Forward – Core Focus Areas

GLC are managing their environmental risk and compliance adequately. Work outside the standard construction hours is being completed at Rosehill, Parramatta and Westmead. All WTP sites have a lot of truck movements and need to continue to keep the haul roads clean and gate wheel cleaning, especially following rain.

The core focus areas for the coming month are:

- The construction of the D-Wall at Parramatta is continuing, this activity has the potential to cause vibration and is being undertaken outside standard construction hours. The ER will focus on ensuring these works are managed in accordance with the NVMP and DNVIS.
- GLC are undertaking work outside standard construction hours at the Westmead and Parramatta. The ER will focus on ensuring these works are managed in accordance with the NVMP and DNVIS.
- GLC continue to move a large amount of spoil off site and between sites, mud tracking on public roads has been a project risk and will continue to be a focus area for the ER in August.
- The diversion and Duck and A'Becketts Creek is being planned for September and October. The ER will focus on ensuring the works are completed in accordance with the Flora and Fauna management Plan and Soil and Water Management Plan.



### 3 PHASE G - EASTERN TUNNEL PACKAGE

The Sydney Metro West Eastern Tunnel Package is Stage 2 of the Sydney Metro West CSSI and is described as major civil construction works between The Bays and Sydney CBD, including station excavation at Pyrmont and Hunter Street and tunnel excavation between the Bays and Hunter Street. Stage 2 (SSI 19238057) was approved on the 24 August 2022.

The Environmental Representatives for the Sydney Metro West Eastern Tunnel Package are:

- Michael Woolley
- Greg Byrnes
- Jo Robertson

The Eastern Tunnelling Package (ETP) is being delivered by John Holland CPB Ghella Joint Venture (JCG) with the contract being awarded in November 2022. Sydney Metro notified DPE that the date of commencement of construction was 17 March 2023. JCG have received Environmental Protection Licence (EPL 21784) for the project.

#### 3.1 Key Construction Related Activities During the Period

Works conducted during the reporting period included:

##### Project Wide:

- Pre-Construction Surveys
- Drilling of monitoring and geotechnical investigation boreholes
- CCTV investigations of sewer lines.

##### Pyrmont East:

- Investigations of utilities using NDD and other techniques
- Ongoing hard demolition of buildings using excavators with hammers and shears/pulverisers with most of the buildings demolished by the end of the reporting period, except for around the outside of the buildings where ground support is required
- Segregation and load out of demolition wastes
- Assembly of scaffolding around buildings prior to demolition
- Stabilisation of boundary footpaths using mini piles; installation of hoarding around the site
- Ongoing construction of hoarding around the site.

##### Pyrmont West:

- General completion of soft strip of buildings to be demolished
- Ongoing hard demolition by excavator using shears and pulverisers and where required rock hammers from area off Pyrmont Street access.
- Ongoing sorting and load out of soft strip and demolition waste materials.
- Installation of scaffolding around the site.

##### Hunter Street West:

- Hazardous Materials assessments and removal
- Ongoing soft strip of buildings to be demolished
- Use of Tower Crane installed in July.
- Installation of scaffolding along some parts of George and Hunter Streets
- Ongoing use of the basement load out zone for loading trucks and removal of soft strip wastes through driveway to Hunter Street
- Completion of installation of B-Class hoarding along George and Hunter Streets.

##### Hunter Street East:

- Activities inside the Bligh Street acoustic shed including ongoing excavation of the station cavern and various adits and declines; stockpiling and load out of spoil. Use of air ventilation systems and other tunnelling support activities.
- Hazardous Materials assessments and removal



- Ongoing soft strip of buildings to be demolished
- Occasional use of the Tower Crane installed in July
- Installation of B-Class hoarding around the site
- Installation of some scaffolding at the site based on “needles” installed on slabs above ground floor level
- Use of penetrations in the walls between buildings for better access.

#### **The Bays:**

- Completion of site offices and commencement of their use
- Commissioning of the temporary WTP
- Ongoing works for the Construction WTP
- Ongoing FRP works for walls of the spoil shed
- FRP for the base slab and footings of the segment shed
- Ongoing construction of an HV kiosk to the west of the haul road in the vicinity of the WBPS including supervision/management/recording of heritage items identified by heritage consultants
- Set up of environmental controls.

### **3.2 Key Construction Activities Look Ahead**

The following works are planned in September:

- Ongoing activities as were conducted for August
- Ongoing hard demolition at the Pyrmont station sites
- Utility investigations and relocations
- Hoarding construction
- Further site establishment works at all sites
- Cavern excavation at Hunter Street using Road headers.

### **3.3 ER Inspections**

Five ER inspections were conducted during the reporting period on each Tuesday of August. Two actions were raised during the inspection dated 1<sup>st</sup> August:

- Review and augment ERSED controls at the site exit to Union Street at Pyrmont East.
- Review noise mitigation at the location of the compressor on Edward Street, Pyrmont East.

Observations were made on various items including the need to continue to manage and monitor dirt tracking on local roads at all sites. JCG were observed to be responsive to ER feedback during inspections and addressed action items promptly.

JCG provided ongoing notification of heritage finds at the Bays during the reporting period, mainly related to a concrete slab and other items in the location of the sub-station near the boundary with WBPS. Heritage consultants reviewed the finds; provided advice to JCG; and cleared the area after assessment for removal of the section of slab as required. A Work Method Statement on management of the find was provided to the ER for information.





### 3.3.1 Photos



Figure 3.1 Pyrmont East: Ongoing hard demolition works



Figure 3.2 Pyrmont East: Sorting of demolition wastes in preparation for load out



Figure 3.3 Pyrmont St West: Hard demolition of area near truck access from Pyrmont Street



Figure 3.4 Pyrmont St West: Scaffolding installed around the building in preparation for demolition



Figure 3.5 Station Cavern: Ongoing excavation of the southern heading by road headers and roof support



Figure 3.6 Hunter Street East: Ongoing soft strip; segregation and load out of wastes in the various buildings



Figure 3.7 The Bays: FRP activities for the Spoil Shed



Figure 3.8 The Bays: FRP works for the sub-station footing

### 3.4 Endorsed document/s

There were no documents endorsed by the ER during the reporting period.

In accordance with CoA A32(d)iii the written statements endorsing the above documents are provided in Appendix A (if relevant).

### 3.5 Complaints

Five complaints related to the ETP were reported to the ER during August 2023 compared to 10 for July. Two of the complaints related to the Hunter Street sites regarding: noise outside of standard hours; and a request to install noise and vibration monitoring equipment.

Three of the complaints related to work at the Pyrmont sites regarding: out of hours noise (1); air quality (1); and a construction vehicle parked at a driveway (1).

During ER Inspections dust management has been observed as being effective through water sprays and cannons both on demolition plant as well as equipment on the ground. No issues related to truck movements or parking have been observed during ER Inspections.

Based on feedback provided by JCG prompt responses to complaints has occurred.

### 3.6 Compliance

#### 3.6.1 Incidents

No Incidents as defined under the Infrastructure Approval or under Sydney Metro/JCGs systems were reported to the ER during the reporting period.

#### 3.6.2 Non-compliance

No non compliances were reported by JCG or Sydney Metro for the reporting period and none were observed by the ER.



### **3.6.3 Audits**

The final report for the first Independent Environmental Audit conducted for ETP was issued to DPE during the reporting period.

The ER attended as an observer an internal audit of the Construction Soil and Water Management Plan by JCG on 31<sup>st</sup> August.

### **3.7 Looking Forward – Core Focus Areas**

In September 2023, the ER Team will be focused on:

- General monitoring of construction activities; including site establishment works at the Bays
- Ongoing hard demolition activities at Pyrmont East and West
- Potential for tracking of dirt at the various demolition sites and at the Bays
- Ongoing preparation for hard demolition at Hunter Street sites
- Tunnelling of the cavern from Hunter Street East.



## **4 PHASE H - WESTMEAD TELSTRA AND JEMENA GAS RELOCATION**

The Sydney Metro West Phase H – Westmead Telstra and Jemena Gas Relocation involves the installation of new utility services around the new Sydney Metro Station at Westmead via Hawkesbury, Bailey and Hassell Streets.

The Environmental Representatives for the Sydney Metro West Eastern Tunnel Package are:

- Greg Byrnes
- Michael Woolley

The Sydney Metro West Phase H – Westmead Telstra and Jemena Gas Relocation is being delivered by Quickway with the contract being awarded in August 2022.

No EPL will be required for this phase of Sydney metro West.

### **4.1 Key Construction Related Activities During the Period**

No works were conducted during the reporting period.

### **4.1 Key Construction Activities Look Ahead**

Some investigation works may be undertaken in September 2023 under the Low Impact Works approval pathway.

### **4.2 ER Inspections**

No ER inspections were completed during the reporting period.

#### **4.2.1 Photos**

None

### **4.3 Endorsed Document/s**

No documents were endorsed during the reporting period.

Sydney Metro are currently updating the Phasing Report to incorporate these works. During August, Quickway submitted the following management plans to the ER for review:

- Construction Environmental Management Plan
- Noise and Vibration Management Plan
- Noise and Vibration Monitoring Program.

### **4.4 Complaints**

No complaints have been reported to the ER in relation to these works

### **4.1 Compliance**

#### **4.1.1 Incidents**

No incidents have been reported to the ER in relation to these works.

#### **4.1.2 Non-compliance**

No non compliances have been reported to the ER or identified by the ER.



HBI Healthy Buildings International Pty Ltd

#### **4.1.3 Audits**

No audits were conducted during the reporting period.

#### **4.2 Looking Forward – Core Focus Areas**

The core focus areas for the coming month are:

- Management Plan review



## **5 SYDNEY METRO RETAINED OBLIGATIONS AND OTHER ACTIVITY**

The Environmental Representatives for the Sydney Metro Retained Obligations and other Activities are:

- Jo Robertson
- Greg Byrnes

The Sydney Metro Retained Obligations and other Activities is being delivered by Sydney Metro with various sub-contractors delivering the works. These works do not require an EPL.

### **5.1 Key Construction Activities During the Period**

The ER is not aware for other Sydney Metro managed construction activities during the period.

### **5.2 Key Construction Activities Look Ahead**

The ER is not aware for other Sydney Metro managed construction activities during the period.

### **5.3 ER Inspections**

There were no ER inspections of this work during the reporting period.

#### **5.3.1 Photos**

None

### **5.4 Endorsed Document/s**

No Sydney Metro documents were endorsed during the reporting period.

### **5.5 Complaints**

No complaints have been reported to the ER in relation to the investigations previously conducted for Sydney Metro.

### **5.6 Compliance**

#### **5.6.1 Incidents**

No incidents have been reported to the ER in relation to the investigations previously conducted for Sydney Metro.

#### **5.6.2 Non-compliance**

No non compliances have been reported to the ER in relation to the investigations previously conducted for Sydney Metro.

#### **5.6.3 Audits**

No audits were conducted during the reporting period.



## **5.7 Looking Forward – Core Focus Areas**

A risk workshop is held monthly with the ERs and the Sydney Metro Environment team to discuss contractor performance, environmental risk and identify key focus areas for the upcoming month. This process is continuing.



## **6 STATEMENT OF LIMITATIONS**

Healthy Buildings International (HBI) has prepared this report in accordance with the requirements of Condition A30(k) of the Sydney Metro West, Concept and Stage 1 SSI 10038 Approval (11 March 2021), and Condition A32(k) of the Sydney Metro West – The Bays to Sydney CBD SSI 19238057 Approval (24 August 2022).

The report is for the sole purposes of Department of Planning and Environment (DPE) and Sydney Metro. It has been prepared based on generally accepted practices and standards at the time it was prepared. No other warranty, expressed or implied, is made as to the professional advice included in this Report. This report did not assess any aspects relating to safety.

Where the Report indicates that information has been provided to HBI by third parties, HBI assumes no liability for any inaccuracies in or omissions to that information.

This Report was prepared based on the conditions encountered and information reviewed at this time. HBI disclaims responsibility for any changes that may have occurred after this time.

This Report should be read in full. No responsibility is accepted for use of any part of this report in any other context or for any other purpose or by third parties. This Report does not purport to give legal advice. Legal advice can only be given by qualified legal practitioners.

Except as required by law, no third party may use or rely on this Report unless otherwise agreed by HBI in writing. Except as specifically stated in this section, HBI does not authorise the use or findings of this Report by any third party

To the extent permitted by law, HBI expressly disclaims and excludes liability for any loss, damage, cost or expenses suffered by any third party relating to or resulting from the use of, or reliance on, any information contained in this Report. HBI does not admit that any action, liability or claim may exist or be available to any third party.





HBI Healthy Buildings International Pty Ltd

**7 APPENDIX A – ER DOCUMENT ENDORSEMENT RECORDS (ETP ONLY)**