



Victoria Cross Station platform.

Victoria Cross Station

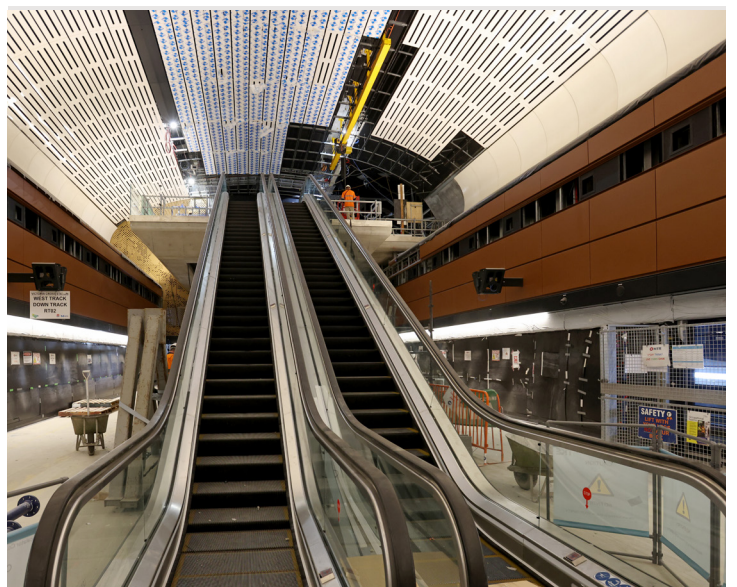
Station preparing for completion.

The Victoria Cross Station is getting closer to completion, with the final escalators installed between the station platform and southern station entry. There will be eight escalators in the cavern with a total of 19 across the station.

Customers accessing the station from Miller and Denison streets will enter the concourse and travel down three separate sets of escalators to reach the metro platform.

The southern entrances, where customers will access the concourse, will combine transport and retail spaces with public art featured throughout.

Work is also progressing on the fit out and finishes in public areas, bringing services such as air conditioning online, ready for metro operations in 2024.



Escalators installation at the Victoria Cross Station platform.

Station update

North site

The Victoria Cross Station northern entrance building, located on the corner of Miller and McLaren streets, has reached a significant milestone, with all major station structural works now completed. The building reached its full height at the end of 2022. Since then, the main façade cladding works including metal panelling and brickwork, has been completed. Ground level fit out work is also well underway. This work will complete the ground level entrance area and lifts. Works to the exterior of the building, including awnings and public domain related works, will be progressively completed over the next few months. Work is continuing within the building to complete specialist services and machinery installation for station operations.



Façade of the Victoria Cross northern entrance building.



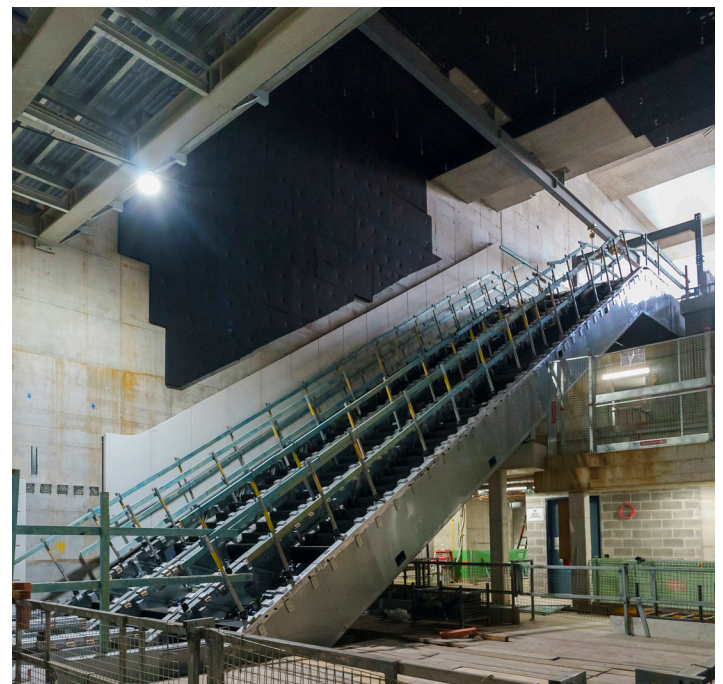
Fit out underway in Victoria Cross Station.

Platform

Work is progressing on the station platforms, with all of the glass reinforced concrete panels and platform screen doors installed. All escalators are now in position, with final finishes being applied prior to testing. Final fitout of station systems for passenger displays and security is nearing completion. The team have also completed installation of the terrazzo floor tiles throughout the station platform and adjoining mezzanine areas.

South site

The south site has reached level eight, with the tower core work system now reaching level 16. Work is ongoing in the basement levels of the station structure to install utility services, construct blockwork walls and complete fit-out of these spaces. Internal fit out of the southern station entrance concourse area is moving ahead with installation of lifts and escalators, ceilings and wall linings.



Escalators being installed in the Victoria Cross south building.

Victoria Cross Reconciliation Action Plan

The Victoria Cross integrated station development Reconciliation Action Plan (RAP) asks all who work at Victoria Cross to incorporate the knowledge, talent, and wisdom of First Nations peoples into the design and construction of the station and over station development.

The Victoria Cross project team with First Nations partners aims to make First Nations design principles the industry standard. We will do this by continually sharing knowledge, methods and processes achieved through our RAP to our supply chain and broader industry. Through cultural learning, employment partnerships and place making we continue to engage and collaborate with First Nations communities, employees, RAP partners and businesses.



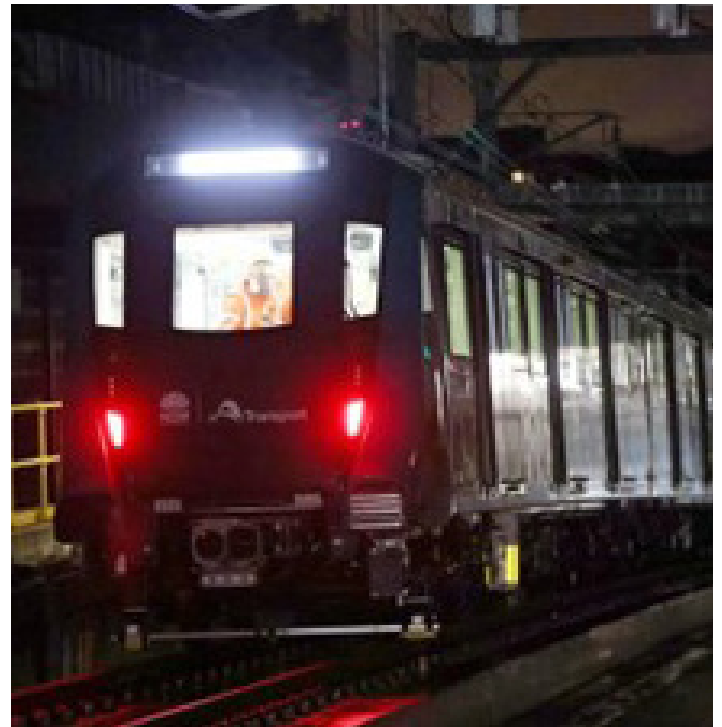
A group of 30 team members attending cultural awareness training hosted by Miri Miri.

Train testing underway

On0track testing began in the early hours of Friday 21 April. Metro trains are now being tested throughout the 15.5-kilometre twin tunnels between Chatswood and Sydenham.

Victoria Cross Station has played a significant role by supporting the stabling of the trains. This allowed the testing team to access the trains via the station during the day, and park at the platform overnight, when testing was not taking place. The tunnel segment in between Victoria Cross and Barangaroo stations also contains the highest gradient slope, where Sydney Metro is checking things like braking and acceleration.

As testing continues in 2023, there will be a shift to focus on interface testing at Victoria Cross Station. Customer facing systems like Passenger Information Screens and platform screen doors will be thoroughly tested to ensure seamless operations when passenger services begin in 2024.



Sydney Metro train testing.

Construction look-a-head

Activity	September	October	November	December
Crane use	● ●	● ●	●	●
Delivering and removing materials, machinery and equipment	● ●	● ●	● ●	● ●
Concrete pours including formwork and reinforcement installation	●	●	●	●
Station fitout	● ●	● ●	●	●
Temporary pedestrian changes and diversions	● ●	● ●	● ●	● ●
Public domain works	●	●	● ●	● ●
Facade works	●	●	●	●

Victoria Cross South site ● Victoria Cross North and cavern sites ●

A new precinct created for North Sydney

Construction is well underway for the Victoria Cross commercial tower and related precinct, that sits directly above the new Victoria Cross Station. In a recent interview with Architecture & Design, Philip Vivian (Managing Director and Architecture Director, Bates Smart) said of the project, “We picture Victoria Cross not as a building, but as a place. It’s got so many functions: the metro station, a landmark tower, a co-working building, over 20 new retailers including restaurants and bars, a hospitality building, and a retail concourse.

Each building has a different character, and they’re all woven around our public spaces. There’s a civic green running down one side, north-facing so it’s got sun, terraced lawns where people can sit out and relax, restaurants looking out on the ground floor. It’s got a little narrow laneway that connects with Denison Street. So, it’s really a collection of buildings that creates a place. It’s not one big building, it’s lots of related smaller pieces and public spaces.”



Artist impressions of the Victoria Cross precinct, view from Miller Street.

Community reference group workshops

With a strong commitment to ensuring the community is at the centre of everything we do, the Victoria Cross precinct has embedded community input into the design and planning of the project. The Victoria Cross over station development team hosted their first Community Reference Group workshop. The outcomes of this workshop will support the design and usability of the Victoria Cross public spaces.

There was a diverse mix of attendees including representation from North Sydney Council, North Sydney residents, local businesses, Australian Catholic University, and Taldumande Youth Services. The discussion covered the Victoria Cross retail offering, functionality of a community hub located in the building foyer, and signage and wayfinding.

The workshop concluded that the community would like to see more entertainment, places to congregate and outdoor dining options. The group highlighted that they would like the area to celebrate local heroes and the natural environment. Above all, the community want Victoria Cross to be easy to access, interactive with technology and an inviting place to be.

The Victoria Cross development team will continue to work with the North Sydney community in future workshops throughout the construction of the over station development.



Artist impressions of the Victoria Cross precinct, view of the laneway connecting Miller Street and Denison Street.

Contact us

If you have any questions or would like more information please contact our project team:

1800 171 386 Community infoline open 24 hours

sydneymetro@transport.nsw.gov.au

Sydney Metro City & Southwest

PO Box K659, Haymarket NSW 1240



Translating and interpreting service

If you need help understanding this information, please contact the Translating and Interpreting Service on 131 450 and ask them to call us on 1800 171 386.