



HBI

Healthy Buildings International Pty Ltd
A.C.N. 003 270 693 A.B.N. 39 003 270 693

Suite 2.06, Level 2
29-31 Solent Circuit
Norwest NSW 2153

Tel: 61 (02) 9659 5433
e-mail: hbi@hbi.com.au
Web: www.hbi.com.au

Mr Rob Sherry
Team Leader Compliance – Government Projects
Department of Planning and Environment
Locked Bag 5022
PARRAMATTA NSW 2124

7 August 2023

Ref:201208-ER_DPE-July 2023

Dear Rob

RE: Sydney Metro - Sydney Metro West SSI - ER Monthly Report for July 2023

Healthy Buildings International (HBI) submits this report to the Secretary in accordance with:

- Condition A30 (k) of the Sydney Metro West, Concept and Stage 1 SSI 10038 Approval (11 March 2021), and associated modifications (MOD 1 - 28 July 2021, MOD 2 - 3 June 2022, MOD3 – 4 July 2022 and MOD4 - 23 December 2022); and
- Condition A32(k) of the Sydney Metro West – The Bays to Sydney CBD SSI 19238057 Approval (24 August 2022).

The attached summary details the key activities undertaken by Environmental Representatives for Sydney Metro – Sydney Metro West for the month of July 2023.

Yours sincerely

Greg Byrnes
Environmental Representative

Cc:

Sydney Metro: Matthew Marrinan, John Lerokis, Pamela Tummers, Andrew Hendy, Cath Snelgrove , Ari Stypel, Ben Armstrong, Sarah Kemp
Contractors: Jared Lipton (AFJV), Steph Mifsud (GLC), Sally Reynolds (JCG)
DPE: Major Projects Portal



Table of Contents

1	Phase B - Central Tunnelling Package	4
1.1	Key Construction Activities During the Period	4
1.2	Key Construction Activities Look Ahead	5
1.3	ER Inspections	5
1.3.1	Photos	6
1.4	Endorsed Document/s	7
1.5	Complaints	7
1.6	Compliance	8
1.6.1	Incidents	8
1.6.2	Non-compliance and Potential Non Compliance	8
1.6.3	Audits	8
1.7	Looking Forward – Core Focus Areas	8
2	Phase F – Western Tunnelling Package	9
2.1	Key Construction Activities During the Period	9
2.2	Key Construction Activities Look Ahead	10
2.3	ER Inspections	10
2.3.1	Photos	11
2.4	Endorsed Documents	12
2.5	Complaints	12
2.6	Compliance	13
2.6.1	Incidents	13
2.6.2	Non-compliance	13
2.6.3	Audits	13
2.7	Looking Forward – Core Focus Areas	14
3	Phase G - Eastern Tunnel Package	15
3.4	Endorsed document/s	17
3.5	Complaints	18
3.6	Compliance	18
3.6.1	Incidents	18
3.6.2	Non-compliance	18
3.6.3	Audits	18
3.7	Looking Forward – Core Focus Areas	18
4	Sydney Metro Retained Obligations and Other Activity	19
4.1	Key Construction Activities During the Period	19
4.2	Key Construction Activities Look Ahead	19



4.3	ER Inspections	19
4.3.1	Photos	19
4.4	Endorsed Document/s.....	19
4.5	Complaints	19
4.6	Compliance.....	19
4.6.1	Incidents.....	19
4.6.2	Non-compliance.....	19
4.6.3	Audits	19
4.7	Looking Forward – Core Focus Areas	20
5	Statement of Limitations.....	21
6	Appendix A – ER Document Endorsement Records (ETP only).....	22



1 PHASE B - CENTRAL TUNNELLING PACKAGE

The Environmental representatives for Phase B of Sydney Metro West are:

- Michael Woolley
- Greg Byrnes
- Jo Robertson

Phase B – Central Tunnelling Package (CTP) is being delivered by Acciona Ferroviol Joint Venture (AFJV). Phase B of Sydney Metro West has been further broken into:

- Phase B1: Civil works
- Phase B2: Tunnelling works

The AFJV hold EPL 21610 for this Phase of works. Activities defined as Phase B2-Tunneling Works in the Staging Report for Metro West commenced during the November 2022 reporting period at Burwood North.

1.1 Key Construction Activities During the Period

The Bays

- Use of conveyor system to remove spoil from the station box and load spoil into the spoil shed. Storage of spoil in the shed and load out of trucks within the shed.
- Ongoing operation of two TBMs including support activities such as the grout plant; deliveries of segments (24/7); works inside the acoustic shed.
- Ongoing operation of the Construction Water Treatment Plant.

Five Dock

- West shaft: Ongoing excavation of rock from the shaft using a surface miner for the base and excavators with hammers for walls and edges. Load out of material by trucks during standard construction hours using two exits. One load out point uses a telescopic excavator to load trucks and the other uses a kibble. Trucks reverse into both load out points under traffic control.
- East Shaft: Excavation of the cavern by road header. Loading of trucks using either a telescopic excavator or kibble on the gantry crane. Storage of some spoil inside the acoustic shed for later load out on trucks. Ongoing use of a house on Waterview Street adjacent the eastern shaft for project offices. Ongoing trials and noise monitoring of ventilation from the shed from scrubbers in the cavern after relocation of the vents to the roof.
- Operation of the Water Treatment Plant at the east site.

Burwood North

- Completion of excavation of the crossover cavern at the western end of the Station Box by road header
- Ongoing excavation of the station box and stockpiling and load out off site of excavated materials. Use of a crusher inside the station box to ensure no oversize material. Wall support, such as rock anchor installation. Trucks entering acoustic shed from Parramatta Road with load out points inside the shed and adjacent to Parramatta Road outside the shed. Trucks exiting site onto Burton Street is now completed (with completion of the cavern excavation) with all trucks now exiting to Parramatta Road.
- Operation of the Water Treatment Plant
- Use of multi storey site offices



- South Shaft: Completion of construction of capping beam for the shaft. Use of truck turntable with truck access from Burwood Road and closure of access from Parramatta Road. Commencement of bulk excavation from the shaft using excavators. Wall support – anchors and shotcrete.

North Strathfield

- Bulk excavation commenced from stockpile load out location to trucks on the slip lane that was part of Queen Street. Drilling and stressing of rock anchors; wall support with shotcrete.
- Completion of three steel loading platforms to enable excavation of the station box and loading of trucks
- Use of hoarding/traffic barrier along outside edge of new slip lane pavement to separate it from Queen Street.

Sydney Olympic Park

- Ongoing excavation of the station box using a ripper on a dozer and excavators. Other works in the station box includes drilling, installing and testing rock anchors and shotcreting of walls.
- Load out of spoil is being undertaken from the site using truck and dogs.
- Works to excavate and construct nozzle sections at western end of the station box. Use of concrete pumping area for this work.
- Use of site exit including weighbridge and wheel wash (as deemed to be required) to Figtree Drive. Heavy vehicles entering from Herb Elliot Avenue.
- Construction of a retaining wall around the electricity connection kiosk at the southwest corner of the station box.
- Project Office Operating.

1.2 Key Construction Activities Look Ahead

- Ongoing activities as described above.
- Various OOHWs (conducted under the EPL).
- Break through of the cavern between Five Dock east and west shafts.

1.3 ER Inspections

There were four ER inspections conducted on each Thursday in July 2023, with sites being inspected on an alternating basis, except for Five Dock which was inspected weekly. Key issues raised during the inspections included:

The Bays:

- Improve the management and control of turbid water from the Bays overhead conveyor and ensure there is no connection for this water to enter the harbour.
- AFJV to review the need for the load tonal movement alarm within the segment shed at the Bays and if not needed (for safety or any other reason), turn off this alarm.
- Provide direct pathway for the Bays spoil shed roof drainage to access the stormwater pit to avoid water overflowing to the general site area. Review ERSED controls in the area.

Five Dock:

- Review truck movements at FD east to prevent too many trucks arriving with no room to park on site and to park trucks so that the rapid shut door can be shut between trucks, rather than left open.
- Ensure all heavy vehicles including spoil trucks at Five Dock east follow the approved routes in the CTMP.
- AFJV to consider and address trucks doing loops in excess of CTMP requirements when accessing the Eastern shed at Five Dock.



Burwood North:

- Provide more effective dirt/dust management inside the acoustic shed. Augment and maintain ERSED controls at the stormwater pit inside the shed.
- Replace geofabric in the drain near the BN WTP filter press that contains sediment.

North Strathfield

- Nil

Sydney Olympic Park

- Augment ERSED controls around the stormwater pit near the kiosk at SOP and remove sediment from the swale drain and at the base of batter.

The majority of the above actions have been closed out, however some continue to remain open.

Actions had been raised in previous inspections in relation to use of the rapid shut doors at the Five Dock acoustic shed. AFJV have since demonstrated ongoing and proactive use of the doors to reduce noise impacts by shutting them routinely when not required to be open for trucks entering and exiting the acoustic shed.

1.3.1 Photos



Figure 1 1 Base of the station box showing vertical conveyors in the background (The Bays). TBM support activities.



Figure 1 2 Loading of segments into the station box for delivery to the TBM. (The Bays).



Figure 1 3 Excavation of the cavern at the western end of the station box under the acoustic shed complete (Burwood North).

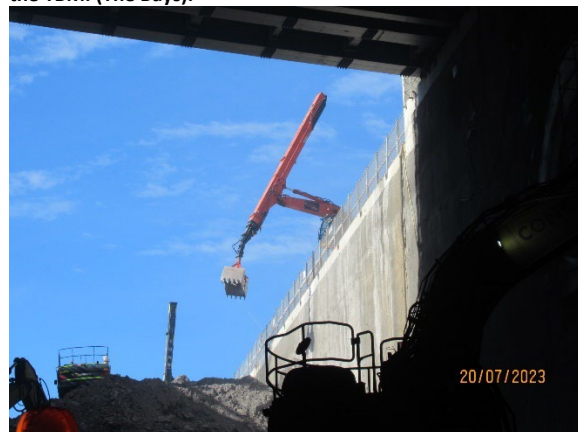


Figure 1 4 Station Box excavation works. (Burwood North)



Figure 1.5 Improved use of the rapid shut door. (Five Dock-east). Vents now out of roof of the shed.



Figure 1.6 Ongoing excavation of the west shaft (Five Dock-west) utilising a surface miner as well as excavators with hammers.



Figure 1.7 Excavation of spoil and wall support. Construction of load out platforms completed. (North Strathfield)



Figure 1.8 Excavation of the Station Box (SOP). Construction of nozzles in the western end.

1.4 Endorsed Document/s

- Nil

Various documents including revised DNVISs at Five Dock, Burwood North and SOP were reviewed during the period with comments provided to AFJV.

1.5 Complaints

Based on a monthly Sydney Metro Complaint Registers provided for July 2023, there were 13 Complaints relating to AFJV activities reported during the month as well as one reported as not related to AFJV activities; a similar number to the 15 reported for the previous month.

Nine of the complaints related to the Five Dock site; four of which were from one resident. Complaints at Five Dock related to: light spill (1); haulage trucks parking on local roads (1); dust at property near the east site (1); property claim process (3); property damage (1); complications with alternative accommodation (1); and OOHs noise (1) - reported as not relating to Sydney Metro activities.

Following an investigation, AFJV raised an NCR for the complaint relating to trucks parking on local roads (see Section 1.6). Dust has not been raised as an issue at the Five Dock East site during ER Inspections. The ER has not been involved in the property damage process.



Three complaints were received at Burwood North relating to: noise from OOHWs (1); impacts to parking for delivery drivers (1) and dust (1).

Reviews of cars parking Burton Street and Burwood Ave during ER inspections shows that there is generally parking spaces available on the street. Dust suppression activities have been observed during ER Inspections.

Two complaints were received at North Strathfield relating to: dust deposited on vehicles (1); and change to the night for OOHWs.

No complaints were received at SOP or the Bays during the reporting period.

1.6 Compliance

1.6.1 Incidents

No incidents considered to represent Incidents as defined under the Project Approval were reported to or observed by the ER.

One incident was reported by AFJV in regarding to a truck spilling spoil onto Parramatta Road near the Burwood North site on 18 July 2023. It is understood that an investigation was conducted and a formal incident report under the SM Incident reporting Procedure is under preparation by AFJV.

1.6.2 Non-compliance and Potential Non Compliance

The following Non-Compliance Report was provided to the ER during the reporting period:

- NCR 024: Five Dock. Three spoil haulage trucks from FDK were identified off the approved haul route. One used the incorrect haul route travelling down Harris St and two trucks were observed to be parked on First Ave.

As detailed in Section 1.3, actions were also raised in relation to truck movements at Five Dock during ER Inspections.

1.6.3 Audits

It is understood that the third Independent Environmental Audit (IEA) related to the CTP scope of works is still to be scheduled.

1.7 Looking Forward – Core Focus Areas

- Dust generation at all sites during dry weather
- Dirt Tracking onto roads from all sites
- Noise and Vibration management at Five Dock and Burwood North
- Traffic Management at Five Dock.



2 PHASE F – WESTERN TUNNELLING PACKAGE

The Environmental Representatives for Phase F of Sydney Metro West are:

- Greg Byrnes
- Swathi Gowda

Phase F – Western Tunnelling Package (WTP) is being delivered by Gamuda Australia Laing O'Rourke Consortium (GLC).

GLC are constructing this Phase of Sydney metro West under EPL 21676.

2.1 Key Construction Activities During the Period

During July, construction activities continued across multiple sites on the WTP, including the excavation of the station box at Westmead, Clyde Dive and Diaphragm Wall construction at Parramatta. The excavation of the TBM Launch Box at Rosehill was completed at the end of July. The following activities were undertaken at the Westmead, Parramatta, Rosehill, Clyde Dive and Clyde MSF sites during July 2023:

Westmead

- Station box excavation, rock bolts and shotcrete.
- Spoil from the Station Box is pre classified and being transferred straight off site.
- Acoustic Shed assembly over station box, the frame has been completed and just insulation and cladding at the Western end remains to be completed
- Water Treatment Plant commissioning
- Road Header delivery and will commence at the eastern end of the Station Box on the 31 July 2023

Parramatta

- Archaeological investigations
- Bentonite Plant operation
- Diaphragm wall (D-Wall) excavation with two cutters and one Grab with spoil being transferred to MSF
- The D-Wall construction is undertaken during OOH when required and resources are available
- Water Treatment Plant assembly

Clyde Dive

- Horizontal tunnelling with Road Headers from shaft excavation.
- Spoil management including movement around site, stockpiling, segregation and classification. Spoil is being transferred to the Clyde MSF by Moxy and crossing Unwin Street
- Clyde dive excavation. Rock is expected at 8m BGL dozer and hammer will be required. Spoil (ASS) going to MSF East for treatment and placement in Speedway

Rosehill

- Excavation of TBM launch box has been completed
- TBM delivery and assembly. TBM 1 is being lowered into the Launch Box. TBM 2 is being assembled on the surface
- Spoil management is winding down, with final loads being sent off site. No spoil will be produced until TBM starts in September 2023



- Construction of Spoil Shed was completed in July
- Long term water treatment plant is being commissioned
- Solar Farm is being assembled and commissioned
- Grout Plant commissioning

Clyde MSF

- Water main and utilities trenching adjacent to the M4 and along Duck Creek
- Unwin Street diversion construction including piling and bridge works
- Piling for the water conveyance structure on both sides of Kay Street and former Downer site
- Duck diversion channel excavation
- Spoil management including stockpiling, segregation, classification and movement around site. This includes Acid Sulfate soil treatment
- Back filling Parramatta Speedway site
- Unwin Street diversion and flood detention civil works.

2.2 Key Construction Activities Look Ahead

The key construction activities planned for August 2023 are similar to those listed in Section 3.1 with the addition of the following:

- TBM to commence tunnelling at Rosehill
- Parramatta the Water Treatment Plant Discharge line will be constructed along George Street during OOHW
- A Road Header will commence excavating the eastern end of the Westmead Station box.

2.3 ER Inspections

Four ER inspections were conducted in July 2023 (5/07/2023, 12/07/2023, 19/07/2023 and 26/07/2023). A total of 14.6 mm (Parramatta BOM) of rain fell during July 2023, compared to a monthly average for July of 50.1 mm. In total three actions were raised across the WTP in July. The low number of actions was most likely due to the low rainfall for the month.

During the ER inspection on the 5 July 2023, inadequate controls were identified at Gates 5 and 7 to control mud tracking on Kay and Wentworth streets. This resulted in mud tracking on Kay and Wentworth streets and a small amount of sediment laden water being washed into a stormwater pit and into Duck Creek. The management of mud tracking on Unwin, Kay and Wentworth streets in the Rosehill and Clyde area was subsequently reviewed by GLC and additional controls were implemented. This has resulted in an improvement and no actions have been raised for mud tracking since the 5 July 2023.

At Parramatta, the D-Wall is being constructed approximately two metres from the State Heritage listed Roxy Theatre. On the 10 July 2023, three high vibration readings were logged and this triggered an investigation. The D-wall excavation methodology with the grab was revised to avoid hitting the side of the excavation and additional supervision by the GLC Environment Team was implemented. No exceedances of the structural or cosmetic damage criteria have been recorded since the 10 July 2023.

The actions and key issues raised at the inspections were:

- **Rosehill** – The Rosehill site is being managed well. No actions were raised in July.
- **Clyde MSF** - This site currently presents the highest environmental risk for GLC with sediment controls being the key focus area for this site. Two actions were raised for mud tracking and associated controls at the site exits.



- **Parramatta** – The Parramatta site is being managed well with no actions raised in July. The excavation of the D-Wall presents an elevated risk for GLC and remains a key focus area for this site.
- **Westmead** – The Westmead site is being managed well with no actions raised in July. Noise and vibration during OOHW presents an elevated risk for GLC and remains a key focus area for this site.
- **Clyde Dive** – This site is being managed adequately with one action raised in July for inadequate concrete wash out practices.

2.3.1 Photos



Figure 2.1: Westmead Site –Acoustic shed construction at western end of Station Box



Figure 2.2: Westmead site – Station Box excavation with acoustic shed construction



Figure 2.3: Westmead Site – Evening works being completed at eastern end of Station Box



Figure 2.4: Westmead site – Evening works being completed at eastern end of Station Box

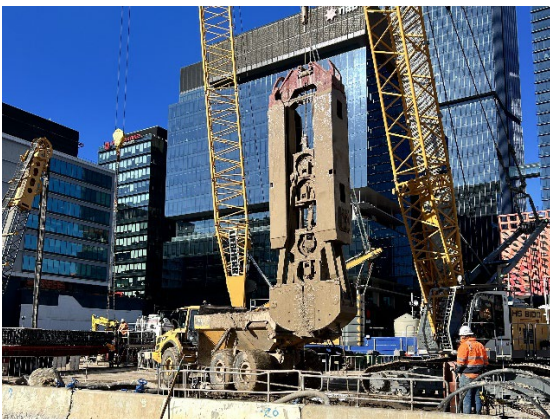


Figure 2.5: Parramatta Site – D-Wall excavation with grab with material being loaded into Moxy



Figure 2.6: Parramatta Site – D-Wall excavation with cutter adjacent to Roxy Theatre



Figure 2.7: Clyde Dive site –Dive Structure excavation along the ATC boundary



Figure 2.8: Clyde Dive site – Concrete Wash out requiring improvement



Figure 2.11: Clyde MSF Site – Mud tracking on Kay Street requiring improvement action



Figure 2.10: Rosehill Site – 50L/s Water Treatment Plant commissioning



Figure 2.12 – Clyde MSF Site – One of the Duck Creek diversion excavations progressing



Figure 2.11: Clyde MSF Site – Mud tracking on Kay Street requiring improvement action

2.4 Endorsed Documents

One document was endorsed by the ER during the reporting period:

- Air Quality Management Plan (SMWSTWTP-GLO-1NL_NL000-AH-PLN-000001 Revision D (17 July 2023)).

2.5 Complaints

Twelve complaints related to the WTP were provided to the ER during July 2023. Following a review of the information provided to the ER six of those complaints were not related to the Sydney Metro West project. Three



were for works being undertaken by Parramatta City Council at Westmead and three were for truck driver behaviour unrelated to Sydney Metro West. The remainder of the twelve complaints are summarised below:

- **Westmead** – Three complaints: The (4/7/2023) complaint related noise after 10pm, the (5/7/2023) complaint related to noise during standard construction hours and the (27/7/2023) complaint related to a mix up with the alternate accommodation hotel booking. The GLC team responded and investigated each complaint adequately and took action where needed.
- **Clyde Stabling Facility** – One complaint: The (31/7/2023) complaint related flood lights shining into the complainants' property. Following an investigation by GLC the lights were found to be pointing down in accordance with the VAMP. The ER issued an email to GLC reminding them to also be good neighbours.
- **Parramatta** – One complaint: The (5/7/2023) complaint related to construction workers parking in public carpark behind Roxy Theatre outside the designated parking bays. GLC conducted a toolbox talk on parking within the community.
- Another complaint was received on the 21/7/2023 that related to property damage. The WTP site was not provided. However, GLC investigated the complaint and it was found that it is unlikely to be from the Sydney Metro tunnelling works.

2.6 Compliance

2.6.1 Incidents

No incidents considered to represent Incidents as defined under the Project Approval were reported to or observed by the ER during the reporting period. However, two environmental incidents occurred that were reported to the EPA and ER.

- On the 5/7/2023, mud tracked onto Kay Street was washed into a stormwater pit with damaged controls that led to a minor release of sediment laden water into Duck Creek. The ER identified this environmental incident during an inspection and requested actions be implemented to ensure a similar incident does not happen again.
- On the 31/7/2023, treated water was released under pressure from the Rosehill water treatment plant. The pressurised release of water scoured the creek embankment causing a sediment plume in the Creek. The ER conducted an investigation during the next site inspection and is satisfied that measures have been put in place to ensure a similar incident does not happen again.

2.6.2 Non-compliance

Two Non-Compliance Reports (NCRs) were issued by the Contractor during the reporting period.

- On the 3/7/2023 construction works were being completed outside of standard construction hours at Westmead under an endorsed DNVIS. Following a complaint and subsequent investigation, GLC identified that some residents were not offered respite in accordance with the list in the DNVIS. This was recorded as a non-compliance with D43.
- On the 31/7/2023 a non-compliance with D118 occurred and was related to the environmental incident on the same day. The release of water from the Water Treatment Plant did comply with D118(a) however the release at high pressure onto the bank of Duck Creek caused sediment to be released and therefore the water that the environment received would not likely comply with ANZG (2018) turbidity criteria.

2.6.3 Audits

No audits were undertaken during the reporting period.



2.7 Looking Forward – Core Focus Areas

GLC are managing their environmental risk and compliance adequately. Vibration alerts were recorded at the heritage listed Roxy theatre from the D-Wall construction. Work outside the standard construction hours is being completed at Parramatta and Westmead. All WTP sites have a lot of truck movements and need to continue to keep the haul roads clean and gate wheel cleaning, especially following rain.

The core focus areas for the coming month are:

- The construction of the D-Wall at Parramatta is continuing, this activity has the potential to cause vibration and is being undertaken outside standard construction hours. The ER will focus on ensuring these works are managed in accordance with the NVMP and DNVIS.
- GLC are undertaking work outside standard construction hours at the Westmead. The ER will focus on ensuring these works are managed in accordance with the NVMP and DNVIS.
- GLC continue to move a large amount of spoil off site and between sites, mud tracking on public roads has been a project risk and will continue to be a focus area for the ER in August.



3 PHASE G - EASTERN TUNNEL PACKAGE

The Sydney Metro West Eastern Tunnel Package is Stage 2 of the Sydney Metro West CSSI and is described as major civil construction works between The Bays and Sydney CBD, including station excavation at Pyrmont and Hunter Street and tunnel excavation between the Bays and Hunter Street. Stage 2 (SSI 19238057) was approved on the 24 August 2022.

The Environmental Representatives for the Sydney Metro West Eastern Tunnel Package are:

- Michael Woolley
- Greg Byrnes
- Jo Robertson

The Eastern Tunnelling Package (ETP) is being delivered by John Holland CPB Ghella Joint Venture (JCG) with the contract being awarded in November 2022. Sydney Metro notified DPE that the date of commencement of construction was 17 March 2023. JCG have received an Environmental Protection Licence (EPL) for the project.

3.1 Key Construction Related Activities During the Period

Works conducted during the reporting period included:

Project Wide:

- Pre-Construction Surveys
- Drilling of monitoring and geotechnical investigation boreholes
- CCTV investigations of sewer lines.

Pyrmont East:

- Investigations of utilities using NDD and other techniques
- Ongoing hard demolition of buildings using excavators with hammers and shears/pulverisers
- Assembly of scaffolding around buildings to be demolished
- Stabilisation of boundary footpaths using mini piles; installation of hoarding around the site
- Removal of electrical kiosk adjacent Edward Street

Pyrmont West:

- Ongoing soft strip of buildings to be demolished
- Ongoing hard demolition by electric remote controlled excavator with hammer and shear attachments (Brokk). Cessation of use of the Brokk by end of July. Larger excavator due to be delivered early in August.
- Completion of demolition of a section of the building on Pyrmont Street to allow for truck load out area to be established. Commencement of load out of soft strip and demolition waste materials.
- Use of a generator for electricity supply – generator not in use since removal of the Brokk
- Installation of A Class hoarding along Paternoster Row. There is now no access to the site from Paternoster Row.

Hunter Street West:

- Hazardous Materials assessments and removal
- Soft strip of buildings to be demolished
- Installation of Tower Crane on weekend of 8-9 July.
- Ongoing use of the basement load out zone for loading trucks and removal of soft strip wastes through driveway to Hunter Street
- Installation of B-Class hoarding along George Street

Hunter Street East:

- Activities inside the Bligh Street acoustic shed including ongoing excavation of the station cavern; completion of the tunnelling for the access decline; stockpiling and load out of spoil. Use of air ventilation systems and other tunnelling support activities.
- Hazardous Materials assessments and removal
- Soft strip of buildings to be demolished



- Installation of Tower Crane on weekend of 8-9 July.
- Installation of B-Class hoarding around the site
- Create penetrations in the walls between buildings for better access

The Bays:

- Site establishment including set up of site sheds as offices for the construction period
- Ongoing concrete works for the Construction WTP as well as assembly of the temporary WTP
- Ongoing FRP works for footings and base slab of the spoil shed
- NDD for utilities investigations to determine design for the segment shed
- Commencement of construction of an HV kiosk to the west of the haul road in the vicinity of the WBPS
- Set up of environmental controls

3.2 Key Construction Activities Look Ahead

The following works are planned in August:

- Ongoing activities as were conducted for July
- Ongoing hard demolition at the Pyrmont station sites which will be noisy
- Utility investigations and relocations
- Hoarding construction
- Further site establishment works at all sites
- Cavern excavation at Hunter Street using Road headers.

3.3 ER Inspections

Four ER inspections were conducted during the reporting period on each Tuesday of July. No actions were raised during ER inspections on 4th, 8th and 15th July. The following actions were raised during the inspection dated 11th July:

- Review and augment ERSED controls at the stormwater pit in the load out area at Pyrmont East.
- JCG to ensure heavy vehicles adhere to the requirements of the Pyrmont West CTMP in relation to not using Paternoster Row. JCG to report event as per the Infrastructure Approval requirements.

JCG were observed to be responsive to ER feedback during inspections and addressed action items promptly. JCG raised an NCR for the heavy vehicle observed during the inspection on Paternoster Row.

JCG provided notification of a heritage find at the Bays during excavation of the footings for the spoil shed. A concrete slab dating to buildings constructed for WWII was uncovered. Heritage consultants reviewed the find; provided advice to JCG; and cleared the area after assessment for removal of the section of slab as required. A Work Method Statement on management of the find was provided to the ER for information.

3.3.1 Photos



Figure 3.1 Pyrmont East: Ongoing hard demolition works



Figure 3.2 Pyrmont East: Ongoing hard demolition works using pulverisers or shears on long reach excavator



Figure 3.3 Pyrmont St West: Hard demolition of area for truck access using small Brokk excavator



Figure 3.4 Pyrmont St West: A Class Hoarding constructed on Paternoster Row



Figure 3.5 Station Cavern: Ongoing excavation by road headers.

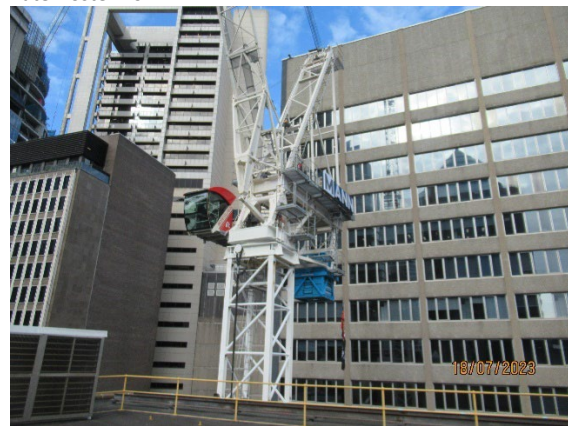


Figure 3.6 Hunter Street West: Tower Crane (electric) installed.



Figure 3.7 The Bays: Concrete works for the Spoil Shed



Figure 3.8 The Bays: Exposed slab from WWII era in footprint of the spoil shed

3.4 Endorsed document/s

There were no documents endorsed by the ER during the reporting period.

In accordance with CoA A32(d)iii the written statements endorsing the above documents are provided in Appendix A (if relevant).



3.5 Complaints

Ten complaints related to the ETP were reported to the ER during July 2023. Two of the complaints related to the Hunter Street sites regarding: noise outside of standard hours (1); and safety during out-of-hours tower crane installation at Hunter St East site on Sunday 9/07. No complaints were received from tunnelling activities.

Eight of the complaints related to work at the Pyrmont sites regarding: daytime works at Pyrmont West (2); worker behaviour (1); fumes and dust from Pyrmont West (1); blocking of driveway access (1); dust (2); and parking (1).

During ER Inspections dust management has been observed as effective through water sprays and cannons both on demolition plant as well as equipment on the ground. Demolition works have been undertaken by hammers on occasion, which is noisy. During ER inspections use of pulverisers is noted where this is feasible, which reduces noise impacts.

3.6 Compliance

3.6.1 Incidents

No Incidents as defined under the Infrastructure Approval were reported to the ER during the reporting period.

One minor oil spill from a transformer being moved was reported directly to the ER and under the JCG Incident Reporting System. JCG reported that no oil was observed in drains in the vicinity of the spill.

3.6.2 Non-compliance

One Non compliance report was provided to the ER during the reporting period. This related to the observation of a re-fuelling truck observed on Paternoster Row during the ER Inspection on 11th July. Since this time JCG placed a traffic controller on the corner of Paternoster Row and Pyrmont Bridge Street to ensure no other project related heavy vehicles entered Paternoster Row. A Class hoarding has since been installed across the entrance preventing access to the site from Paternoster Row.

3.6.3 Audits

A Draft report for the first Independent Environmental Audit conducted for ETP was provided to the ER during the reporting period.

The ER attended as an observer an internal audit of the CNVMP by JCG on 28 July.

3.7 Looking Forward – Core Focus Areas

In August 2023, the ER Team will be focused on:

- General monitoring of construction activities; including site establishment works at the Bays
- Ongoing hard demolition activities at Pyrmont East and West
- Ongoing preparation for demolition at Hunter Street sites
- Tunnelling of the cavern from Hunter Street East.



4 SYDNEY METRO RETAINED OBLIGATIONS AND OTHER ACTIVITY

The Environmental Representatives for the Sydney Metro Retained Obligations and other Activities are:

- Jo Robertson
- Greg Byrnes

The Sydney Metro Retained Obligations and other Activities is being delivered by Sydney Metro with various sub-contractors delivering the works. These works do not require an EPL.

4.1 Key Construction Activities During the Period

The ER is not aware for other Sydney Metro managed construction activities during the period.

4.2 Key Construction Activities Look Ahead

The ER is not aware for other Sydney Metro managed construction activities during the period.

4.3 ER Inspections

There were no ER inspections of this work during the reporting period.

4.3.1 Photos

None

4.4 Endorsed Document/s

No Sydney Metro documents were endorsed during the reporting period.

4.5 Complaints

No complaints have been reported to the ER in relation to the investigations previously conducted for Sydney Metro.

4.6 Compliance

4.6.1 Incidents

No incidents have been reported to the ER in relation to the investigations previously conducted for Sydney Metro.

4.6.2 Non-compliance

No non compliances have been reported to the ER in relation to the investigations previously conducted for Sydney Metro.

4.6.3 Audits

No audits were conducted during the reporting period.



4.7 Looking Forward – Core Focus Areas

A risk workshop is held monthly with the ERs and the Sydney Metro Environment team to discuss contractor performance, environmental risk and identify key focus areas for the upcoming month. This process is continuing.



5 STATEMENT OF LIMITATIONS

Healthy Buildings International (HBI) has prepared this report in accordance with the requirements of Condition A30(k) of the Sydney Metro West, Concept and Stage 1 SSI 10038 Approval (11 March 2021), and Condition A32(k) of the Sydney Metro West – The Bays to Sydney CBD SSI 19238057 Approval (24 August 2022).

The report is for the sole purposes of Department of Planning and Environment (DPE) and Sydney Metro. It has been prepared based on generally accepted practices and standards at the time it was prepared. No other warranty, expressed or implied, is made as to the professional advice included in this Report. This report did not assess any aspects relating to safety.

Where the Report indicates that information has been provided to HBI by third parties, HBI assumes no liability for any inaccuracies in or omissions to that information.

This Report was prepared based on the conditions encountered and information reviewed at this time. HBI disclaims responsibility for any changes that may have occurred after this time.

This Report should be read in full. No responsibility is accepted for use of any part of this report in any other context or for any other purpose or by third parties. This Report does not purport to give legal advice. Legal advice can only be given by qualified legal practitioners.

Except as required by law, no third party may use or rely on this Report unless otherwise agreed by HBI in writing. Except as specifically stated in this section, HBI does not authorise the use or findings of this Report by any third party

To the extent permitted by law, HBI expressly disclaims and excludes liability for any loss, damage, cost or expenses suffered by any third party relating to or resulting from the use of, or reliance on, any information contained in this Report. HBI does not admit that any action, liability or claim may exist or be available to any third party.



HBI Healthy Buildings International Pty Ltd

6 APPENDIX A – ER DOCUMENT ENDORSEMENT RECORDS (ETP ONLY)