

HBI

Healthy Buildings International Pty Ltd
A.C.N. 003 270 693 A.B.N. 39 003 270 693

Suite 2.06, Level 2
29-31 Solent Circuit
Norwest NSW 2153

Tel: 61 (02) 9659 5433
e-mail: hbi@hbi.com.au
Web: www.hbi.com.au

Mr Rob Sherry
Team Leader Compliance – Government Projects
Department of Planning Industry and Environment
Locked Bag 5022
PARRAMATTA NSW 2124

7 December 2022

Ref:201208-ER_DPE-November 2022

Dear Rob

RE: Sydney Metro - Sydney Metro West SSI 10038 – ER Monthly Report for November 2022

Healthy Buildings International (HBI) submits this report to the Secretary in accordance with:

- Condition A30 (k) of the Sydney Metro West, Concept and Stage 1 SSI 10038 Approval (11 March 2021), and associated modifications (MOD 1 - 28 July 2021, MOD 2 - 3 June 2022 and MOD3 – 4 July 2022)

The attached summary details the key activities undertaken by Environmental Representatives for Sydney Metro – Sydney Metro West for the month of November 2022.

Yours sincerely

Greg Byrnes
Environmental Representative

Cc:

Sydney Metro: Matthew Marrinan, John Lerokis, Pamela Tummers, Andrew Hendy, David Virtue

Contractors: Joshua Maltese (Quick way), Jared Lipton (AFJV), Tahlia Moore (Transport for Tomorrow), Hayley Young (GLC)

DPE: Major Projects Portal



Table of Contents

1	Phase A - Power Enabling Works	4
1.1	Key Construction Activities During the Period	4
1.2	Key Construction Activities Look Ahead	4
1.3	ER Inspections.....	4
1.3.1	Photos.....	4
1.4	Endorsed Documents	4
1.5	Complaints.....	4
1.6	Compliance	5
1.6.1	Incidents	5
1.6.2	Non-compliance	5
1.6.3	Audits.....	5
1.7	Looking Forward – Core Focus Areas	5
2	Phase B - Central Tunnelling Package	5
2.1	Key Construction Activities During the Period	5
2.2	Key Construction Activities Look Ahead	7
2.3	ER Inspections.....	7
2.3.1	Photos.....	8
2.4	Endorsed Document/s.....	10
2.5	Complaints.....	10
2.6	Compliance	10
2.6.1	Incidents	10
2.6.2	Non-compliance and Potential Non Compliance	10
2.6.3	Audits.....	11
2.7	Looking Forward – Core Focus Areas	11
3	Phase C - Parramatta, Westmead and Clyde Enabling Works	11
3.1	Key Construction Activities During the Period	11
4	Phase E – Existing Rail Corridor Enabling Works.....	12
4.1	Key Construction Activities During the Period	12
4.2	Key Construction Activities Look Ahead	12
4.3	ER Inspections.....	13
4.3.1	Photos.....	13
4.4	Endorsed Documents	13
4.5	Complaints.....	13
4.6	Compliance	13



4.6.1	Incidents	13
4.6.2	Non-compliance	13
4.6.3	Audits.....	13
4.7	Looking Forward – Core Focus Areas	13
5	Phase F – Western Tunnelling Package.....	14
5.1	Key Construction Activities During the Period	14
5.2	Key Construction Activities Look Ahead	15
5.3	ER Inspections.....	16
5.3.1	Photos.....	17
5.4	Endorsed Document/s.....	19
5.5	Complaints.....	19
5.6	Compliance	19
5.6.1	Incidents	19
5.6.2	Non-compliance	19
5.6.3	Audits.....	20
5.7	Looking Forward – Core Focus Areas	20
6	Sydney Metro Retained Obligations and Other Activity	20
6.1	Key Construction Activities During the Period	20
6.2	Key Construction Activities Look Ahead	20
6.3	ER Inspections.....	20
6.3.1	Photos.....	20
6.4	Endorsed Document/s.....	21
6.5	Complaints.....	21
6.6	Compliance	21
6.6.1	Incidents	21
6.6.2	Non-compliance	21
6.6.3	Audits.....	21
6.7	Looking Forward – Core Focus Areas	21
7	Statement of Limitations.....	22



1 PHASE A - POWER ENABLING WORKS

The Environmental representatives for Phase A of Sydney Metro West are:

- Michael Woolley
- Greg Byrnes

Phase A - Power Enabling Works (PEW) is being delivered by Quickway.

Quickway are not required to hold an Environmental Protection Licence for these works.

1.1 Key Construction Activities During the Period

- Sites held by Quickway had been handed over to SM during the previous reporting period. No material works were understood to have been conducted by Quickway during the month of November other than conduct of road restoration works (concrete removal, replacement, and temporary asphalt) on Mullens Street on two separate nights.

1.2 Key Construction Activities Look Ahead

- Restoration of road pavement impacted by the works across the alignment including Mullens Street and Robert Street.
- Pavement restoration works in other areas of the project such as Darling and Merton Streets – timing planned for January 2023 and subject to ROLs.

1.3 ER Inspections

There were no ER Inspections conducted during the reporting period

1.3.1 Photos

As no inspections were undertaken, there were no photos taken of the Quickway works during the reporting period

1.4 Endorsed Documents

There was one document endorsed during the reporting period: OOHW-013(b) – Final Road Restorations – Various Locations; Mullens St – Robert Street intersection towards Mansfield Street and Robert St – From Mullens Street to Bridge Port Access Road (Revision 4) that covers an increased scope of works for this activity.

1.5 Complaints

It is understood that complaints for the Metro West Project including the PEW works are being forwarded weekly to DPE. The registers as provided by Sydney Metro reported no complaints during the period related to the Power Enabling Works being undertaken by Quickway.

It is understood that there remain some property damage claims being reviewed by Sydney Metro. The ER has not been involved in this process.



1.6 Compliance

1.6.1 Incidents

No incidents were reported as per A43 of the Conditions of Approval for SSI 10038 for works conducted under the project approval during the reporting period.

1.6.2 Non-compliance

No Non-Compliance Reports (NCRs) were issued by the Contractor during the reporting period. No events were observed by the ER that was formally determined to represent a non-compliance.

1.6.3 Audits

No audits were conducted during the reporting period.

1.7 Looking Forward – Core Focus Areas

OOHWs to restore roads along the works alignment such as Darling Street and Merton Street in January 2023.

2 PHASE B - CENTRAL TUNNELLING PACKAGE

The Environmental representatives for Phase B of Sydney Metro West are:

- Michael Woolley
- Jo Robertson

Phase B – Central Tunnelling Package (CTP) is being delivered by Acciona Ferrovia Joint Venture (AFJV). Phase B of Sydney Metro West has been further broken into:

- Phase B1: Civil works
- Phase B2: Tunnelling works

The AFJV hold EPL 21610 for this Phase of works. Activities defined as Phase B2-Tunneling Works in the Staging Report for Metro West commenced during the reporting period at Burwood North, with the commencement of Road Header activities to excavate the tunnel to the south shaft (reported by AFJV to be on 21 November 2022).

2.1 Key Construction Activities During the Period

The Bays

- Ongoing site establishment including FRP for new slabs; construction of the WTP; installation of pipes and pumping systems etc.
- Resumption of grouting works adjacent to the White Bay Power Station (WBPS) on site and within the FDC managed areas.
- Ongoing use of the haul road for WCX vehicles to access their site without going through the footprint of the station box.
- Form Reo Pour (FRP) for spoil shed slab and footings.
- Ongoing excavation of the station box involving use of rock hammers in rock at the eastern end of the station box. Ongoing drilling and stressing of rock anchors at relevant levels within the station box as excavation. Pumping of water from the station box to the temporary WTP.



- Commencement of the construction of the Segment Shed frame over the station box using multiple cranes.
- Site offices and compound in operation.
- Operation of a temporary water treatment plant (WTP) with discharge of treated water occurring under EPL conditions. Use of bulk sediment bags to remove some sediment prior to treatment in the WTP.
- Stockpiling and load out of spoil from the excavation of the Station Box.
- HV installation in the former PEW area.

Five Dock

- West shaft: Pile breakback using rock hammers and construction of capping beams. General concreting works for slabs and footings. Commencement of underbore for services between the two shaft sites.
- East Shaft: Completion of the frame for the acoustic shed; installation of the gantry crane over a weekend; installation of acoustic panels on the shed. Use of a house on Waterview Street adjacent the eastern shaft site leased from Council. Fit out of site sheds on the property. Underbore retrieval pit on Second Street outside the site.
- Utilities works in local streets. Repair of road pavement in Second Av and Waterview Streets.

Burwood North

- Commencement of road header activities to excavate the tunnel to the south shaft.
- Use of multi storey site offices.
- Ongoing excavation of the station box; stockpiling and load out off site of excavated materials. Wall support such as rock anchor installation. Construction of some frames for the acoustic shed that will progress over the station box.
- Use of truck egress to Loftus Street and site access from Parramatta Road.
- Ongoing construction of the Water Treatment Plant.
- Utility work in Burton Street.
- Various site establishment activities across the site.

North Strathfield

- Commencement of piling activities on the lower side of the station box.
- Utility works in the vicinity of the station box and general area.
- Construction of concrete pavement for future loading area along Queen Street adjacent the site.

Sydney Olympic Park

- Ongoing excavation of the station box; drilling; installing and testing anchors; shotcreting of walls. Load out of spoil from site using truck and dogs.
- Use of site exit including weighbridge and wheel wash to Figtree Drive. Heavy vehicles entering from Herb Elliot Av.
- Continued spoil loadout pre-standard construction hours – commencing spoil load out from 6am following trial in the last week of October. This activity was ceased on 25 November following noise monitoring at a sensitive receiver's residence (elevated) following complaints and a meeting with the resident.
- Project Office Operating.

Various utility and other works out of hours at most sites.



2.2 Key Construction Activities Look Ahead

- Ongoing activities as described above. Various OOHWs relating to services; road signs and signals, hoarding installation etc at all sites. Activities such as site investigations; utilities related works and site establishment.

2.3 ER Inspections

There were four formal ER inspections conducted by the ER each Thursday in October 2022. The Bays site was visited during each inspection while other sites were visited on an alternating basis. DPE representatives attended some of the ER site inspections conducted on 10 and 17 November. Key issues raised during the inspections included:

The Bays:

- ERSED controls at stockpiles and at the Port Access Road near Robert Street.

Five Dock:

- General notes related to maintenance of ERSED controls

Burwood North:

- Tracking of dirt at exits.
- Sealing of road repairs near exits
- Maintenance and adequacy of ERSED controls at various locations
- Construction related vehicles parking in no stopping zones
- Construction Vehicles parking in local roads (during a follow up visit on 1 December it was observed that the No stopping zones were free of construction related vehicles and there were less construction vehicles evident parking on local roads immediately around the site)
- Secondary containment for chemical storage
- Reinstatement/Maintenance of footpath surfaces

North Strathfield

- Minor issues related to maintenance of ERSED controls and tracking

SOP

- Stabilisation of dirt areas
- Management and maintenance of some ERSED controls.



2.3.1 Photos



Figure 2-1 Concrete works for the Spoil shed foundations (The Bays)



Figure 2-4 Construction of Gantry Crane and frame of the acoustic shed (Burwood North)



Figure 2-2 Ongoing excavation of the station box (The Bays)



Figure 2-5 Ongoing construction of the acoustic shed (Five Dock-east)



Figure 2-3 Ongoing excavation of the station box (Burwood North). Roadheader in the base of the excavation commenced tunnel excavation to the south shaft.



Figure 2-6 Ongoing excavation of the station box (SOP)



Figure 2-7 Piling on the lower side of the station box at North Strathfield



2.4 Endorsed Document/s

- OOHW 188 Stormwater BN
- OOHW 177 NS Queen St Upgrade
- OOHW 202 FD Signal Removal
- Visual Amenity Management Plan Rev 4
- OOHW 192 BN Hydrant Relocation (re-issued 10-11-22)
- OOHW 206 NS Underbore
- OOHW 178 TCS 0967 - Intersection of Concord Rd and Wellbank St_Rev1
- OOHW 213 TBY TBM Water Supply Rev 0
- OOHW 213 TBY TBM Water Supply Rev 2

2.5 Complaints

Complaints are reported to DPE weekly for Metro West. Based on Sydney Metro Complaint Registers provided, there were 24 Complaints relating to AFJV activities reported during the month. Ten of the complaints were from one person and covered a variety of issues at the Five Dock site. The complaints from this complainant were escalated to the project Community Complaints Mediator (CCM). Five other complaints regarding a variety of issues were reported from one other person at Five Dock including air quality; visual impacts from the acoustic shed; consultation, OOHWs and noise. Outside of these complaints there was one other complaint at Five Dock related to traffic cones blocking a driveway.

There were three complaints at Burwood North relating to: Haulage routes; Truck marshalling in front of residential receivers; and truck movements on Gipps Street.

There were three complaints at SOP regarding: perceived lack of action taken regarding previous complaint relating to low impact (below NML) out of hours work; noise from work early morning work at Sydney Olympic Park station site; and noise from work occurring during standard construction hours

There was one complaint regarding the management of spoil during high winds at The Bays.

2.6 Compliance

2.6.1 Incidents

No incidents considered to represent Incidents as defined under the Project Approval were reported to or observed by the ER. The following incidents were reported to the ER under the SM Incident Reporting System:

- Spill of Water/diesel mix at Sydney Olympic Park - contained on site
- Engine Oil spill at The Bays - contained on site
- Complaint made to the EPA regarding water draining from the Port Access Road (on site) and across Robert Street. The water was identified by AFJV to be from the WTP area. Water had passed through a sediment bag, however due to WTP operating issues, had not been treated through the WTP. It is understood that the EPA has requested further information regarding the incident.

2.6.2 Non-compliance and Potential Non Compliance

No Non-Compliance Reports (NCRs) were issued by AFJV during the reporting period.

AFJV have stated they will be issuing an NCR for the late issue of the monitoring report required under the CPAS. The CPAS (which reflects the requirements of Infrastructure Approval Condition D91(k)) requires a report of monitoring results to be issued to the Planning Secretary and relevant Councils to be issued at 6 monthly intervals. It is understood that the report has since been submitted to DPE. Further to this, SM has reported that agreement with council has not been reached regarding off-site parking for some sites as proposed in the CPAS, hence the proposed off site parking as defined in the CPAS has not been able to be implemented.



The October ER Monthly report indicated that *a potential Non-Compliance was raised by Sydney Metro in relation to the number of truck movements at the Sydney Olympic Park site during the AM peak period*. Further to this report, AFJV have determined that they were operating under the requirements of the approved CTMP for the project, however; noted the inconsistencies in the CTMP. It is understood the CTMP is to be updated to address the inconsistency.

The October ER report also referred to a trial at SOP for early commencement (5:30 to 6:00am start) of spoil hauling under an EPL OOHWS permit. It is understood that monitoring for the trial indicated NML compliance for the early start. The pre-standard construction hours start continued in November, however some complaints were received related to the early start. AFJV reported that a meeting was held on 24 November with one complainant who agreed to noise monitoring being undertaken at his residence (understood to be on an elevated level of an adjacent apartment building). The noise monitoring was conducted on 25 November. It is understood that following the noise monitoring event AFJV determined to cease the early commencement of spoil haulage from SOP and it has not occurred since this date.

2.6.3 Audits

It is understood that the second Independent Environmental Audit (IEA) related to the CTP scope of works has been completed.

2.7 Looking Forward – Core Focus Areas

- Grout and sludge management from grouting activities at the Bays
- Water Management and ERSED Management specifically at the Bays as well as generally at the other sites.
- Dirt Tracking from most operating sites – particularly post rain events.
- Noise and Vibration management at Five Dock

3 PHASE C - PARRAMATTA, WESTMEAD AND CLYDE ENABLING WORKS

The Environmental representatives for Phase C of Sydney Metro West are:

- Greg Byrnes
- Mike Woolley

Phase C – Parramatta, Westmead and Clyde Enabling Works is being delivered by Delta Group Pty Ltd (Delta). Phase C of Sydney Metro West has been further broken into:

- Phase C1: Parramatta, Westmead and Clyde Demolition Works
- Phase C2: Parramatta and Clyde Archaeological Clearance

Delta is not required to hold an EPL for this Phase of works.

3.1 Key Construction Activities During the Period

All works associated with Phase C – Parramatta, Westmead and Clyde Enabling Works were completed in September 2022 and all sites were handed over to GLC.

This Phase of the Sydney Metro West Stage 1 will no longer be included in the Sydney Metro - Sydney Metro West SSI 10038 – ER Monthly Report.



4 PHASE E – EXISTING RAIL CORRIDOR ENABLING WORKS

The Environmental representatives for Phase E of Sydney Metro West are:

- Jo Robertson
- Greg Byrnes

Phase E – Existing Rail Corridor Works (Brownfield Works) is being delivered by Transport for Tomorrow (TfT).

Transport for Tomorrow are not required to have an EPL for these works.

4.1 Key Construction Activities During the Period

Weekends 23 cancelled due to PIA action. New possession weekends required to be applied for (12 weeks out commonly) – have applied for all weekend through to WE38. Some low impact work ongoing (hand tools).

4.2 Key Construction Activities Look Ahead

Westmead:

Was originally planned for WE23 (3-4 December) now on hold.

- Removal of Poles and wires
- Road closures, bus relocations etc
- Removal of redundant GLT and GST
- Removal of poles 1W and 1W stay and span

North Strathfield:

Indicative sequence of future works requires 3 weekends of specific outages

Outage Weekend 1 – Date TBC – Requires outage on 33kV, 11kV, Fdr622

- 11kV Commissioning
- Removal of 11kV ABC from Pole 10B to Pole 13
- Installation of Pole 14A, 14S
- Drill Pole 71S and Backfill

Outage Weekend 2 – Date TBC - Requires outage on 33kV, 11kV, Fdr622 & Ausgrid

- Pole 14A to Pole 14 Aerial Conductors
- Pole 14S Backstay connection to Pole 14
- 33kV Commissioning

Config 9 Possession – WE38 (18-19 March 2023) – Requires outage on 33kV, 11kV, Feeder 622 & 1500V plus Ausgrid. Need M4 and Parramatta Rd occupancy

- Pole 71S installation and Connection
- 33kV Aerial removals
- 33kV Pole Removals and Pole Modifications
- Feeder Removal from Cable Tunnel – feeder outages TBC following inspection in tunnel



4.3 ER Inspections

No ER formal inspections were undertaken during November 2022 due to the low impact nature of the works. Surveillance continues conducted during AFJV (North Strathfield) and Delta/GLC (Westmead) inspections as these sites are adjacent to the Tft works.

4.3.1 Photos

No photos available as no formal inspection were undertaken.

4.4 Endorsed Documents

During the period the ER has been provided with:

- SMW Complaints Reports (Monthly) | Nov 2022, and daily complaint summaries

The ER has also provided feedback on the AA: OOH Permit WE23 Westmead Dec 3_4 2022 during November, as well as an update to the Tft OOHW Protocol Rev B (2nd draft).

4.5 Complaints

It is understood that complaints for the Metro West Project including the Brownfields works are being forwarded weekly to DPE. The registers as provided by Sydney Metro reported no complaints during the period related to the Brownfields Works being undertaken by Tft. [note that this was subsequently approved however the works did not proceed with the planned possession being cancelled].

4.6 Compliance

4.6.1 Incidents

No incidents were reported as per A43 of the Conditions of Approval for SSI 10038 for works conducted under the project approval during the reporting period.

4.6.2 Non-compliance

No Non-Compliance Reports (NCRs) were issued by the Contractor during the reporting period. No events were observed by the ER that were determined to represent a non-compliance.

4.6.3 Audits

No audits were conducted during the reporting period. The ER conducted Interim Compliance Review reported in October was ongoing.

4.7 Looking Forward – Core Focus Areas

The Tft project team continues to be a highly responsive team who are dealing with works with impacts that for the most part would be typical of maintenance activities that are typically conducted under the Sydney Trains operational framework.

Key items moving forward continue to remain static and include:

- Works moving towards completion across ongoing possessions
- Managing the impacts of changes caused by the Industrial Action



- Implementation of the CEMP and other Construction documentation required under the SSI approval
- Ongoing cumulative interface with AFJV and GLC at North Strathfield and Westmead respectively.
- Confirm all approvals are in place for works in an around Parramatta Road and the M4.

5 PHASE F – WESTERN TUNNELLING PACKAGE

The Environmental Representatives for Phase F of Sydney Metro West are:

- Greg Byrnes
- Swathi Gowda

Phase F – Western Tunnelling Package (WTP) is being delivered by Gamuda Australia Laing O’Rourke Consortium (GLC).

GLC are constructing this Phase of Sydney metro West under EPL 21676.

5.1 Key Construction Activities During the Period

Construction activities are continuing at multiple site across the WTP with earthworks commencing at Clyde MSF and Westmead. The following activities were undertaken at the Westmead, Parramatta, Rosehill, Clyde Dive and Clyde MSF sites during November 2022:

Westmead

- Earthworks are continuing with the tiered piling platforms being constructed across the site.
- The Parramatta to Westmead HV cable conduit installation is continuing outside approved construction hours under the EPL provisions
- Long term haul road construction
- Spoil Stockpile management including storage, classification and removal from site.

Parramatta

- Hoarding installation (Macquarie St/United Ln).
- Archaeological investigations on the Church Street sides of the site
- Concrete waste processing and removal
- Piling pad construction inside the station box footprint
- Sewer relocation from inside the station box to outside. This includes an underbore
- Spoil Stockpile management including storage, classification and removal from site
- Site set up planning has commenced for the Diaphragm Wall excavation.

Clyde Dive

- Heritage pedestrian bridge is planned to be relocated January 2023 due to lead paint
- Haul road and pedestrian access construction
- Shaft excavation and shotcreting works continuing in the northern end of the site.
- Spoil management including movement around site, stockpiling, segregation and classification. Spoil is being transferred to the Clyde MSF by Moxy and crossing Unwin Street
- Set up of two Acid Sulfate Soil storage and treatment areas
- Acoustic shed construction including steel frame erection.



Rosehill

- The Diaphragm wall construction including excavation to 30m and concrete pours. The D-Wall is expected to be finished in late December 2022.
- Bentonite Plant operation
- Excavation of TBM launch box has commenced
- Spoil management including segregation, classification and disposal. This includes the treatment of Acid Sulfate Soil
- Temporary Water Treatment Plant commissioning
- The excavation of the Spoil Acoustic Shed foundations has commenced
- Long term stockpiles are being sprayed with polymer to reduce dust.

Clyde MSF

- Demolition of the Downer facility is continuing with all major above ground structures removed
- Former Speedway grandstand demolition and embankment leveling. Note embankment earthworks will be done under Asbestos management conditions
- The sheet piling for the water conveyance structure is scheduled to commence the week starting early December 2022
- An Acid Sulfate soil treatment area is currently being set up at the western end of the Speedway
- Spoil management including segregation, classification and disposal.

5.2 Key Construction Activities Look Ahead

The key construction activities planned for December 2022 are listed below:

Westmead

- Earthworks are continuing with the tiered piling platforms being constructed across the site.
- The Parramatta to Westmead HV cable conduit installation is continuing outside approved construction hours under the EPL provisions
- Long term haul road construction
- Spoil Stockpile management including storage, classification and removal from site

Parramatta

- Archaeological investigations on the Church Street sides of the site
- Piling pad construction inside the station box footprint
- Sewer relocation from inside the station box to outside. This includes an underbore
- Spoil Stockpile management including storage, classification and removal from site
- Diaphragm Wall excavation equipment mobilisation

Clyde Dive

- Heritage pedestrian bridge relocation
- Haul road and pedestrian access construction
- Shaft excavation and shotcreting works continuing in the northern end of the site.
- Spoil management including movement around site, stockpiling, segregation and classification. Spoil is being transferred to the Clyde MSF by Moxey and crossing Unwin Street
- Acoustic shed construction



Rosehill

- The Diaphragm wall construction including excavation to 30m and concrete pours
- Bentonite Plant operation
- Excavation of TBM launch box has commenced
- Spoil management including segregation, classification and disposal. This includes the treatment of Acid Sulfate Soil
- The excavation of the Spoil Acoustic Shed foundations has commenced

Clyde MSF

- Demolition of the Downer facility
- Former Speedway grandstand demolition and embankment leveling under asbestos management conditions
- The sheet piling for the water conveyance structure along Duck Creek
- Acid Sulfate soil treatment at the western end of the Speedway
- Spoil management including segregation, classification and disposal.

5.3 ER Inspections

Five ER inspections were conducted in November 2022 (02/11/2022, 09/11/2022, 16/11/2022, 23/11/2022 and 30/11/2022). A total of 45.8mm of rain fell during November 2022, with 30mm falling on the 14th. Based on the observations during the inspections the sites held up well during rainfall.

The five sites have been broken into two groups and are inspected on alternate weeks. Group 1 is Westmead, Parramatta and Clyde Dive and group 2 is Rosehill and Clyde MSF. In total 23 actions were raised across the WTP in November. Five of the actions were raised for all sites and the key issues were Progressive Erosion and Sediment Control Plans (PESCP), spoil truck labelling and chemical storage.

The remained and the actions and key issues raised at the inspections were:

- **Rosehill** – Spoil management is continuing to be a focus area for GLC and the ER at the Rosehill site. Three actions were raised regarding spoil management and associated erosion and sediment controls
- **Clyde MSF** - This site is currently in the demolition including the former Downer site. Chemical storage was a focus area for GLC and the ER during November. Five actions were raised for chemical storage and spoil management.
- **Parramatta** – The Westmead site is being managed well with the key activities being archaeology investigations and site preparation for the D-Wall construction. One action was raised for erosion and sediment control
- **Westmead** – The Westmead site is being managed well. One action was raised on construction vehicles parking on Bailey Street.
- **Clyde Dive Site** – The key activities are earthworks and spoil management. Eight actions were raised regarding Spoil Management (ASS Treatment), chemical storage and monitoring result requests.



5.3.1 Photos



Figure 5-1: Convict Drain at Parramatta

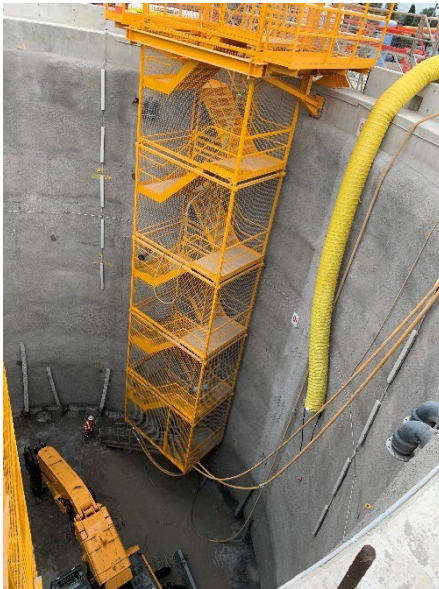


Figure 5-2: Clyde Dive Shaft excavation



Figure 5-3: Clyde Dive Spoil Storage area (ASS Treatment area set up)



Figure 5-4: Paramatta archaeological artefacts

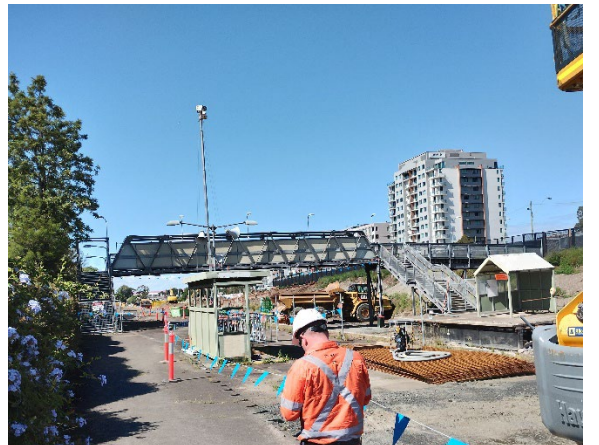


Figure 5-5: Clyde Dive heritage bridge is still to be relocated



Figure 5-6: Clyde Dive earth works



Figure 5-7: Westmead piling platform construction



Figure 5-8: Westmead haul road construction



Figure 5-9: Clyde MSF chemical storage to be banded



Figure 5-10: Rosehill spoil haulage (no truck identification)



Figure 5-11: Clyde MSF Speedway earthworks



Figure 5-12: Geotechnical drilling outside EIS construction boundary



5.4 Endorsed Document/s

The following documents were endorsed by the ER during the reporting period:

- Western Tunnelling Package: Spoil Management Plan (Rev F)

5.5 Complaints

Eight complaints related to the WTP were provided to the ER during November 2022:

- 1/11/2022- Westmead Station (WTP) -A Traffic, Transport & Parking complaint was received via email regarding the number of construction vehicles accessing at standpipe in the cul-de-sac section of Bailey Street. The use of the standpipe is necessary but the frequency used will be reviewed.
- 3/11/2022- Westmead Station (WTP) – A noise and vibration complaint was received via email regarding noise and vibration and truck movements on Bailey Street and vibration from the vibratory roller. The complainant was informed that the roller is progressively moving away from her property and truck movements on Bailey Street are reducing.
- 5/11/2022- Westmead Station (WTP) – A noise and vibration complaint was received via 1800 number regarding noise from a vacuum truck being used during geotechnical investigations within normal construction hours. Noise monitoring was undertaken of the activity and was found to be complaint.
- 15/11/2022- Westmead Station (WTP) – A noise and vibration complaint was received via 1800 number regarding noise levels during approved works outside normal construction hours from trenching activities. Noise monitoring was previously undertaken of the activity to confirm compliance.
- 16/11/2022- Westmead Station (WTP) – A noise and vibration complaint was received via 1800 number regarding noise levels during approved works outside normal construction hours from trenching activities. Noise monitoring was conducted the following night to confirm compliance.
- 16/11/2022- Westmead Station (WTP) – An odour complaint was received via 1800 number regarding diesel/fuel odour coming from the Westmead Site. The on-site Environment Team conducted monitoring and identified low levels of hydrocarbon odour. Odour monitoring will be increased.
- 19/11/2022- A noise complaint was received via 1800 number regarding noise from a drill rig operating in Oak Street Parramatta and why noise mitigation was not being used. The resident was informed that drilling would be stopping at 1pm. Noise monitoring of the activity was undertaken and was found to be complaint.
- 20/10/2022 – Westmead Station (WTP) -A vibration complaint was received via the 1800 Info Line regarding vibration from a roller during normal construction hours. Environment team had undertaken vibration monitoring the day prior and all results were within the allowable limit. The environment team also conducted real time vibration monitoring from the property boundary while rolling was taking place and vibration levels were within allowable limits.

5.6 Compliance

5.6.1 Incidents

No incidents were reported to the ER under the SM Incident Reporting System. No incidents considered to represent Incidents as defined under the Project Approval were reported to or observed by the ER.

5.6.2 Non-compliance

Two Non-compliances occurred during the reporting period related to WTP works:

- During an ER Inspection on the 2nd and 9th November 2022 the ER observed multiple spoil haulage trucks that did not have any project identification stickers as required under Ministers Condition of Approval A47. In response GLC issued a Non Compliance Report (NCR). During the ER Inspection on the 16/11/2002 all spoil haulage trucks were observed to have the required identification.



- A Westmead resident called the project 1800 number (1800 612 173) to register a noise complaint at 1:46am on 16 November 2022. The GLC representative called the resident at 4:05am with no response. This attempted contact with the complainant occurred two hours and 15 minutes after the initial complaint. This timeframe is a non-compliance with the two hour verbal response time stipulated in the Overarching Community Communication Strategy required under Ministers Condition of Approval B1.

5.6.3 Audits

No audits were undertaken during the reporting period

5.7 Looking Forward – Core Focus Areas

GLC are managing their environmental risk and compliance adequately. During the ER site inspections good dust management and erosion and sediment control practices were observed, especially at the Westmead and Parramatta sites. The ER inspections and compliance monitoring focused on spoil management, chemical storage and noise and vibration mitigation and monitoring.

The core focus areas for the coming month are:

- Noise management, especially at Westmead and the Clyde Dive site
- Spoil management, especially the storage and stockpiling measures
- Acid Sulfate soil storage and treatment
- Clyde Dive – ongoing noise management adjacent to the Rosehill Racecourse

6 SYDNEY METRO RETAINED OBLIGATIONS AND OTHER ACTIVITY

The Environmental Representatives for the Sydney Metro Retained Obligations and other Activities are:

- Jo Robertson
- Greg Byrnes

The Sydney Metro Retained Obligations and other Activities is being delivered by Sydney Metro with various sub-contractors delivering the works. These works do not require an EPL.

6.1 Key Construction Activities During the Period

The ER is not aware for other Sydney Metro managed construction activities during the period.

6.2 Key Construction Activities Look Ahead

The ER is not aware for other Sydney Metro managed construction activities during the period

6.3 ER Inspections

There were no ER inspections of this work during the reporting period.

6.3.1 Photos

None



6.4 Endorsed Document/s

No Sydney Metro documents were endorsed during the reporting period.

6.5 Complaints

No complaints have been reported to the ER in relation to the investigations previously conducted for Sydney Metro.

6.6 Compliance

6.6.1 Incidents

No incidents have been reported to the ER in relation to the investigations previously conducted for Sydney Metro.

6.6.2 Non-compliance

No non compliances have been reported to the ER in relation to the investigations previously conducted for Sydney Metro.

6.6.3 Audits

No audits were conducted during the reporting period.

6.7 Looking Forward – Core Focus Areas

A risk workshop is held monthly with the ERs and the Sydney Metro Environment team to discuss contractor performance, environmental risk and identify key focus areas for the upcoming month. This process is continuing.



7 STATEMENT OF LIMITATIONS

Healthy Buildings International (HBI) has prepared this report in accordance with the requirements of Condition A30(k) of the Sydney Metro West, Concept and Stage 1 SSI 10038 Approval (11 March 2021). The report is for the sole purposes of Department of Planning and Environment (DPE) and Sydney Metro. It has been prepared based on generally accepted practices and standards at the time it was prepared. No other warranty, expressed or implied, is made as to the professional advice included in this Report. This report did not assess any aspects relating to safety.

Where the Report indicates that information has been provided to HBI by third parties, HBI assumes no liability for any inaccuracies in or omissions to that information.

This Report was prepared based on the conditions encountered and information reviewed at this time. HBI disclaims responsibility for any changes that may have occurred after this time.

This Report should be read in full. No responsibility is accepted for use of any part of this report in any other context or for any other purpose or by third parties. This Report does not purport to give legal advice. Legal advice can only be given by qualified legal practitioners.

Except as required by law, no third party may use or rely on this Report unless otherwise agreed by HBI in writing. Except as specifically stated in this section, HBI does not authorise the use or findings of this Report by any third party

To the extent permitted by law, HBI expressly disclaims and excludes liability for any loss, damage, cost or expenses suffered by any third party relating to or resulting from the use of, or reliance on, any information contained in this Report. HBI does not admit that any action, liability or claim may exist or be available to any third party.