

Waterloo Station entrance from Cope Street.

Extended work hours at Waterloo Station

April 2022

Proposed changes to standard Saturday construction hours

Approved standard construction hours for Sydney Metro at all sites from Chatswood to Sydenham are **Monday to Friday, 7am to 6pm and Saturday 8am to 1pm**.

For the last two years, Sydney Metro has been utilising standard Saturday construction hours from 7am to 6pm under the COVID-19 Ministerial Order, as well as works outside these hours through the standard out-of-hours works approval (OOHWA) process.

The COVID-19 Ministerial Order expired on 31 March 2022, however Sydney Metro is proposing to extend standard Saturday construction hours until 6pm at all its sites from Chatswood to Sydenham. Sydney Metro is seeking your feedback on this proposal to inform the planning modification that will be submitted to the Department of Planning and Environment (DPE) for assessment.

Benefits of extended working hours

Working additional hours allows Sydney Metro to:

- mitigate the significant impact of COVID-19 on Sydney Metro and its construction partners
- **reduce the length of the overall construction program, to reduce impacts on the local community**
- ensuring consistency by bringing the standard Saturday construction hours for Chatswood to Sydenham in line with those on the Sydenham to Bankstown part of the project.

Key items in this project update:

- Sydney Metro construction has been significantly impacted by the COVID-19 pandemic and associated restrictions.
- Sydney Metro is proposing to extend standard Saturday construction hours to allow work to continue until 6pm at all its sites from Chatswood to Sydenham.
- Sydney Metro is seeking feedback from the community to help inform the planning modification that will be submitted to the Department of Planning and Environment.
- Sydney Metro is also seeking to work additional hours on weekdays and Sundays at Waterloo Station.

Sydney Metro is Australia's biggest public transport project.

Services started in May 2019 in the city's North West with a train every four minutes in the peak. Metro rail will be extended into the CBD and beyond to Bankstown in 2024. There will be new CBD metro railway stations at Martin Place, Pitt Street and Barangaroo and new metro platforms at Central. In 2024, Sydney will have 31 metro railway stations and a 66-kilometre standalone metro railway system. There will be ultimate capacity for a metro train every two minutes in each direction under the Sydney city centre.

The new Waterloo integrated station development includes construction of the new Waterloo metro station by John Holland, while a joint venture between John Holland and Mirvac will deliver the Waterloo Metro Quarter, including buildings above and next to the station.

Planning modification – extending standard Saturday construction hours

Sydney Metro is proposing to extend standard Saturday construction hours until 6pm via the submission of a formal planning modification with DPE.

The activities that Sydney Metro proposes to continue on Saturday afternoons will be similar in nature to what has occurred at that time over the last two years, such as:

- concrete pours
- pre-assembly of structural steel panels
- hoist and crane operation
- station fit-out work including installation of utility services
- materials deliveries
- temporary ventilation
- waterproofing
- formwork and reinforcement fixing.

Equipment used will include rattle guns, hand powered tools, saws, elevated work platforms, vacuum trucks, concrete trucks, lighting towers, welding machines, concrete vibrator and pumps, ventilation fans, dewatering units, helicopter trowels, tower and mobile cranes, and delivery vehicles.

See overleaf for details on how to provide feedback on the planning modification.

Impacts of COVID-19

COVID-19 restrictions have had a significant impact on the construction industry, including Sydney Metro delivery partners. In addition to the two-week construction pause in July 2021, COVID-19 restrictions impacted Sydney Metro in a range of ways:

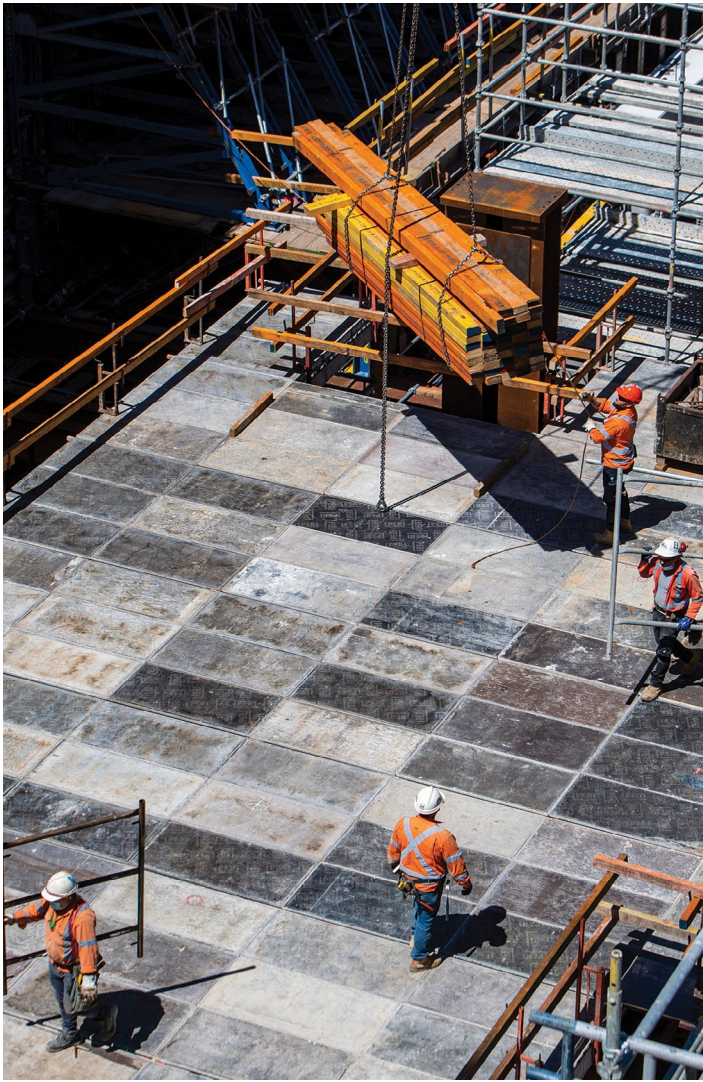
- supply chain issues
- reduced worker capacity on site due to COVID-safe work practices
- reduced labour force due to Local Government Area (LGA) restrictions
- site shutdowns to enable deep cleaning and contact tracing when needed.

Impact of not working additional hours

It is essential that Sydney Metro proceed with these additional work hours. Without the additional working hours, Sydney Metro will remain on site completing works for an overall longer period of time.



Overview of Waterloo Station site bounded by Botany Road, Cope, Raglan and Wellington streets.



Views of Sydney Metro's Waterloo station from the surface level of the construction site.

Mitigating impacts on the community

Sydney Metro will continue to use mitigation measures such as noise monitoring, noise blankets, concrete pumping acoustic enclosures, limited tools and non-tonal reversing alarms on trucks. In some situations, respite options and alternative accommodation may be offered to local residents.

The Sydney Metro Stakeholder and Community Relations team will be in constant contact with impacted community members to ensure all issues and complaints are appropriately managed.

We acknowledge the disruption these works may cause, and reiterate our thanks to the community for its continued support and patience while we deliver this project.

Additional work hours at Waterloo Station – weekdays and Sundays

In addition to the extension of the standard Saturday construction hours, Sydney Metro also plans to continue additional weekday and Sunday hours at Waterloo Station to reduce the overall construction program. This will be assessed through the standard out-of-hours works approval (OOHWA) process.

Additional work hours are planned to take place on most weekdays from 6pm–12am, Saturdays from 6pm–10pm and Sundays from 7am–10pm.

These additional work hours will be similar in nature to construction that has taken place over the last two years, such as:

- scaffold and formwork installation
- concrete pouring
- crane set up and lifting operations
- precast installation
- welding and tying of steel reinforcement
- material deliveries.

These works can only take place following assessment by an independent Acoustic Advisor and Environmental Representative.

There will be no high noise activities such as rock breaking, rock hammering, sheet piling, pile driving or similar activities taking place.

Sydney Metro will continue to closely monitor the works and mitigate construction impacts as much as possible.

If you have any feedback or questions about this work, please contact waterloometro@transport.nsw.gov.au or phone **1800 171 386**.



Construction works on the surface level at Waterloo station.



Piling works, waterproofing and preparation for concrete pour continue at the Waterloo Station site.

Planning and construction timeline



How to provide feedback on the Saturday construction hours proposal

Feedback can be provided to Sydney Metro between **Friday 29 April and Friday 13 May 2022** via:

1800 171 386

sydneymetro@transport.nsw.gov.au

mailing submission to: City & Southwest Project Communications Team
 Sydney Metro City & Southwest, PO Box K659, Haymarket NSW 1240

Want to stay up to date with Waterloo Station?

Register today for community email updates at waterloometro@transport.nsw.gov.au.

Have your say

If you have any questions or would like more information please contact our project team:

1800 171 386 Community information line open 24 hours

sydneymetro@transport.nsw.gov.au

Sydney Metro City & Southwest
 PO Box K659, Haymarket NSW 1240



Translating and interpreting service

If you need help understanding this information, please contact the Translating and Interpreting Service on 131 450 and ask them to call us on 1800 171 386.