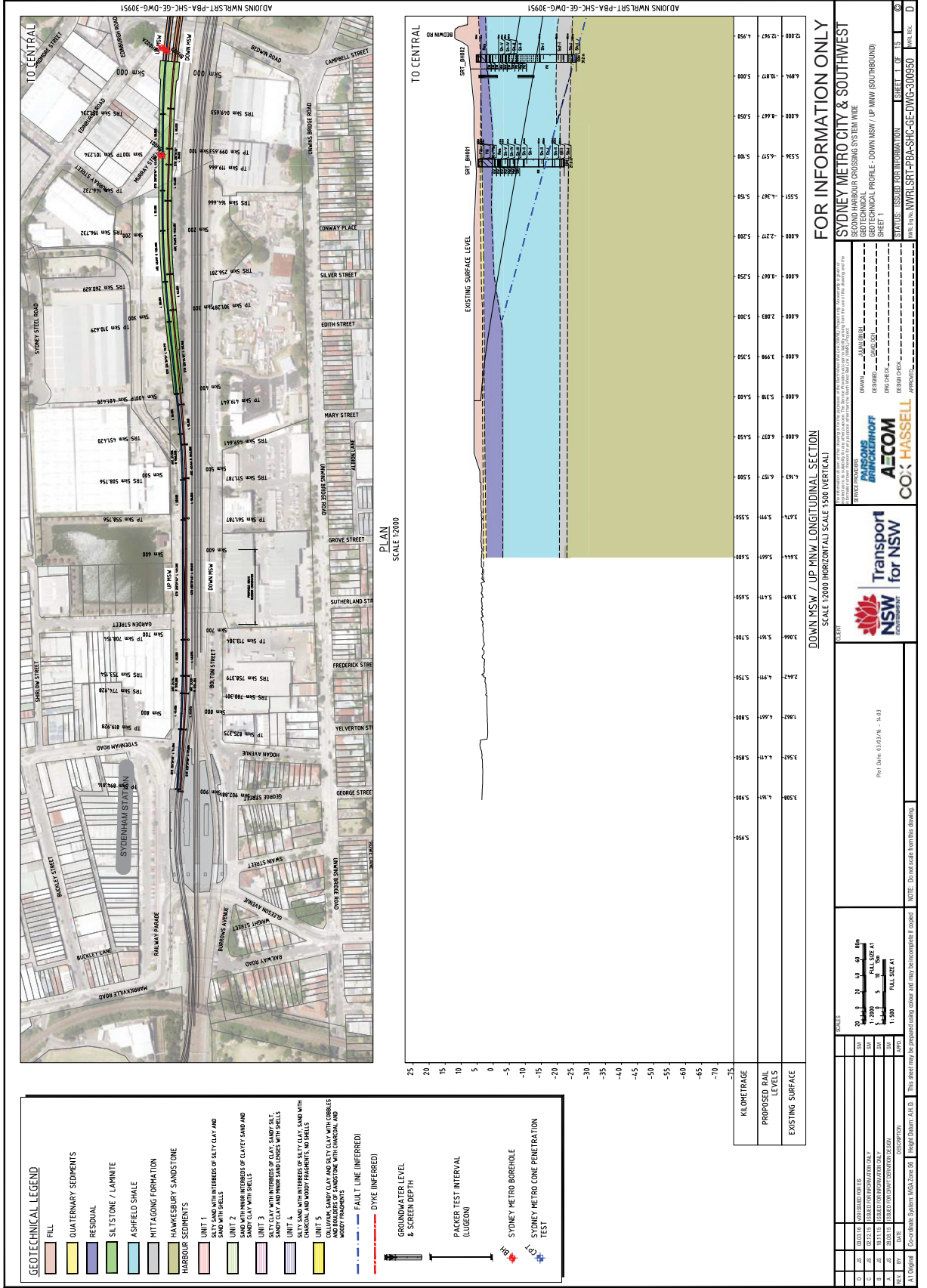


# **GEOLOGICAL LONG SECTION**

APPENDIX F



**GEOTECHNICAL LEGEND**

- FILL
- QUATERNARY SEDIMENTS
- RESIDUAL
- SILTSTONE / LAMINITE
- ASHFIELD SHALE
- MITTAGONG FORMATION
- HAWKESBURY SANDSTONE
- HARBOUR SEDIMENTS
- UNIT 1
- UNIT 2
- UNIT 3
- UNIT 4
- UNIT 5
- UNIT 6
- UNIT 7
- UNIT 8
- UNIT 9
- UNIT 10
- UNIT 11
- UNIT 12
- UNIT 13
- UNIT 14
- UNIT 15
- UNIT 16
- UNIT 17
- UNIT 18
- UNIT 19
- UNIT 20
- UNIT 21
- UNIT 22
- UNIT 23
- UNIT 24
- UNIT 25
- UNIT 26
- UNIT 27
- UNIT 28
- UNIT 29
- UNIT 30
- UNIT 31
- UNIT 32
- UNIT 33
- UNIT 34
- UNIT 35
- UNIT 36
- UNIT 37
- UNIT 38
- UNIT 39
- UNIT 40
- UNIT 41
- UNIT 42
- UNIT 43
- UNIT 44
- UNIT 45
- UNIT 46
- UNIT 47
- UNIT 48
- UNIT 49
- UNIT 50
- UNIT 51
- UNIT 52
- UNIT 53
- UNIT 54
- UNIT 55
- UNIT 56
- UNIT 57
- UNIT 58
- UNIT 59
- UNIT 60
- UNIT 61
- UNIT 62
- UNIT 63
- UNIT 64
- UNIT 65
- UNIT 66
- UNIT 67
- UNIT 68
- UNIT 69
- UNIT 70
- UNIT 71
- UNIT 72
- UNIT 73
- UNIT 74
- UNIT 75
- UNIT 76
- UNIT 77
- UNIT 78
- UNIT 79
- UNIT 80
- UNIT 81
- UNIT 82
- UNIT 83
- UNIT 84
- UNIT 85
- UNIT 86
- UNIT 87
- UNIT 88
- UNIT 89
- UNIT 90
- UNIT 91
- UNIT 92
- UNIT 93
- UNIT 94
- UNIT 95
- UNIT 96
- UNIT 97
- UNIT 98
- UNIT 99
- UNIT 100

SYDNEY METRO BOREHOLE  
SYDNEY METRO LONG PENETRATION TEST

GROUNDWATER LEVEL & SCREEN DEPTH

PACKER TEST INTERVAL (LUGEON)

FAULT LINE (INFERRED)

DYKE (INFERRED)

**FOR INFORMATION ONLY**

SYDNEY METRO CITY & SOUTHWEST  
DOWN MSW / UP MNW LONGITUDINAL SECTION  
SCALE 1:2000 (HORIZONTAL) SCALE 1:500 (VERTICAL)

KILOMETRE	PROPOSED RAIL LEVELS	EXISTING SURFACE
0.000	15.00	15.00
0.100	15.00	15.00
0.200	15.00	15.00
0.300	15.00	15.00
0.400	15.00	15.00
0.500	15.00	15.00
0.600	15.00	15.00
0.700	15.00	15.00
0.800	15.00	15.00
0.900	15.00	15.00
1.000	15.00	15.00
1.100	15.00	15.00
1.200	15.00	15.00
1.300	15.00	15.00
1.400	15.00	15.00
1.500	15.00	15.00
1.600	15.00	15.00
1.700	15.00	15.00
1.800	15.00	15.00
1.900	15.00	15.00
2.000	15.00	15.00
2.100	15.00	15.00
2.200	15.00	15.00
2.300	15.00	15.00
2.400	15.00	15.00
2.500	15.00	15.00
2.600	15.00	15.00
2.700	15.00	15.00
2.800	15.00	15.00
2.900	15.00	15.00
3.000	15.00	15.00
3.100	15.00	15.00
3.200	15.00	15.00
3.300	15.00	15.00
3.400	15.00	15.00
3.500	15.00	15.00
3.600	15.00	15.00
3.700	15.00	15.00
3.800	15.00	15.00
3.900	15.00	15.00
4.000	15.00	15.00
4.100	15.00	15.00
4.200	15.00	15.00
4.300	15.00	15.00
4.400	15.00	15.00
4.500	15.00	15.00
4.600	15.00	15.00
4.700	15.00	15.00
4.800	15.00	15.00
4.900	15.00	15.00
5.000	15.00	15.00
5.100	15.00	15.00
5.200	15.00	15.00
5.300	15.00	15.00
5.400	15.00	15.00
5.500	15.00	15.00
5.600	15.00	15.00
5.700	15.00	15.00
5.800	15.00	15.00
5.900	15.00	15.00
6.000	15.00	15.00
6.100	15.00	15.00
6.200	15.00	15.00
6.300	15.00	15.00
6.400	15.00	15.00
6.500	15.00	15.00
6.600	15.00	15.00
6.700	15.00	15.00
6.800	15.00	15.00
6.900	15.00	15.00
7.000	15.00	15.00
7.100	15.00	15.00
7.200	15.00	15.00
7.300	15.00	15.00
7.400	15.00	15.00
7.500	15.00	15.00

FOR INFORMATION ONLY

SYDNEY METRO CITY & SOUTHWEST  
DOWN MSW / UP MNW LONGITUDINAL SECTION  
SCALE 1:2000 (HORIZONTAL) SCALE 1:500 (VERTICAL)

STATUS: ISSUED FOR INFORMATION

DATE: 15/08/2024

PROJECT: SYDNEY METRO CITY & SOUTHWEST

CLIENT: TRANSPORT FOR NSW

DESIGNER: AECOM

CONSULTANT: COO HASSELL

APPROVED: [Signature]

DATE: 15/08/2024

PROJECT: SYDNEY METRO CITY & SOUTHWEST

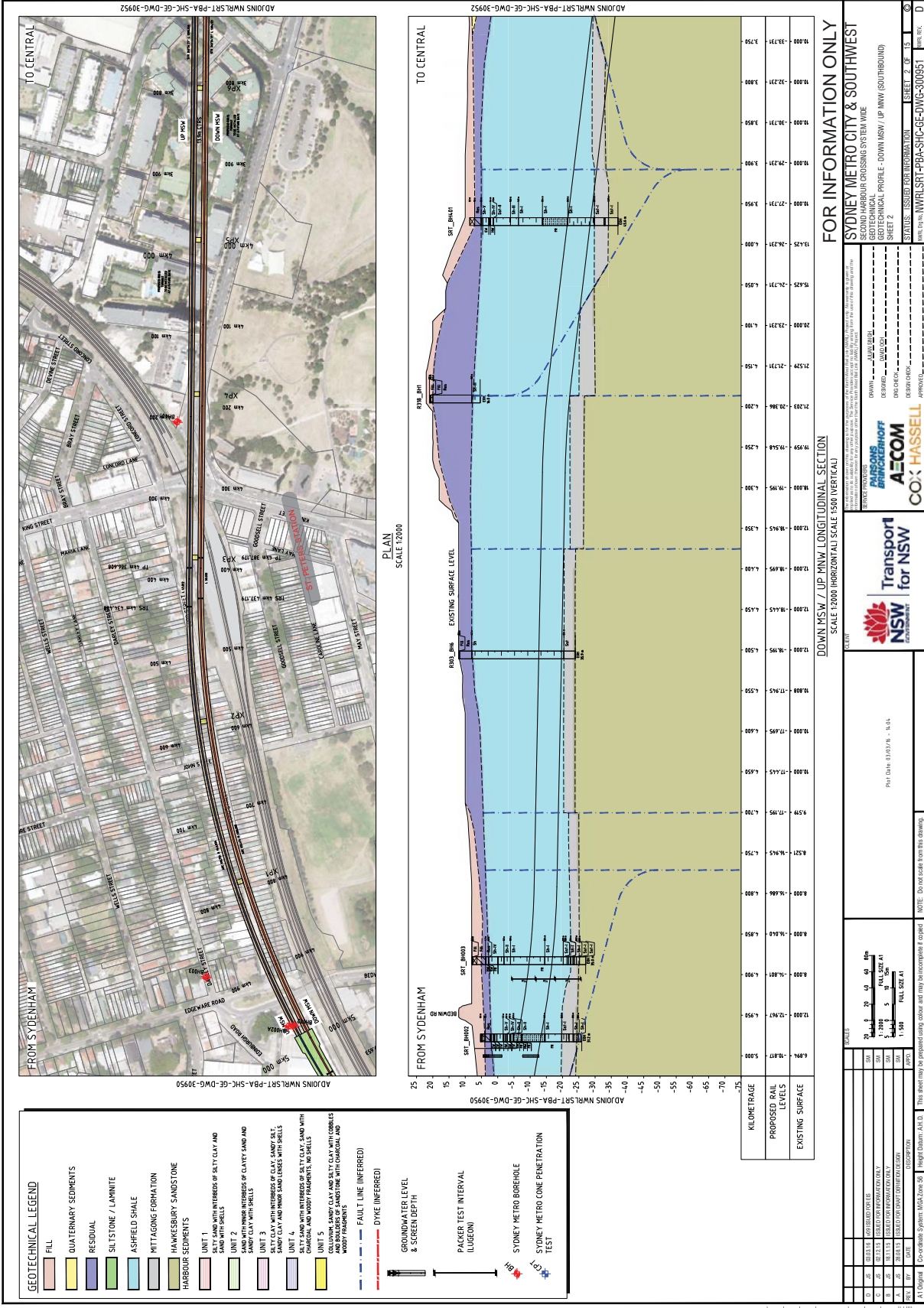
CLIENT: TRANSPORT FOR NSW

DESIGNER: AECOM

CONSULTANT: COO HASSELL

APPROVED: [Signature]

DATE: 15/08/2024



GEOLOGICAL LEGEND	
[Color Box]	FILL
[Color Box]	QUATERNARY SEDIMENTS
[Color Box]	RESIDUAL
[Color Box]	SILTSTONE / LAMINITE
[Color Box]	ASHFIELD SHALE
[Color Box]	MITTAGONG FORMATION
[Color Box]	HANKS BURY SANDSTONE
[Color Box]	HARBOUR SEDIMENTS
[Color Box]	UNIT 1 SAND WITH INTERBEDS OF SILTY CLAY AND SAND WITH SHELLS
[Color Box]	UNIT 2 SAND WITH MINOR INTERBEDS OF CLAYTY SAND AND SANDY CLAY WITH SHELLS
[Color Box]	UNIT 3 SANDY CLAY WITH INTERBEDS OF CLAY, SANDY SILT, SANDY CLAY AND MINOR SAND LENSES WITH SHELLS
[Color Box]	UNIT 4 SILT SAND WITH INTERBEDS OF SILTY CLAY AND SAND WITH SHELLS
[Color Box]	UNIT 5 COLLOIDAL SANDY CLAY AND SILTY CLAY WITH COBBLES AND Boulders of SANDSTONE WITH OOLITHAL AND SHARP FRAGMENTALS
[Color Box]	FAULT LINE (INFERRED)
[Color Box]	DYKE (INFERRED)
[Symbol]	GROUNDWATER LEVEL & SCREEN DEPTH
[Symbol]	PACKER TEST INTERVAL (LOGUE)
[Symbol]	SYDNEY METRO BOREHOLE
[Symbol]	SYDNEY METRO GROUND PENETRATION TEST

**FOR INFORMATION ONLY**

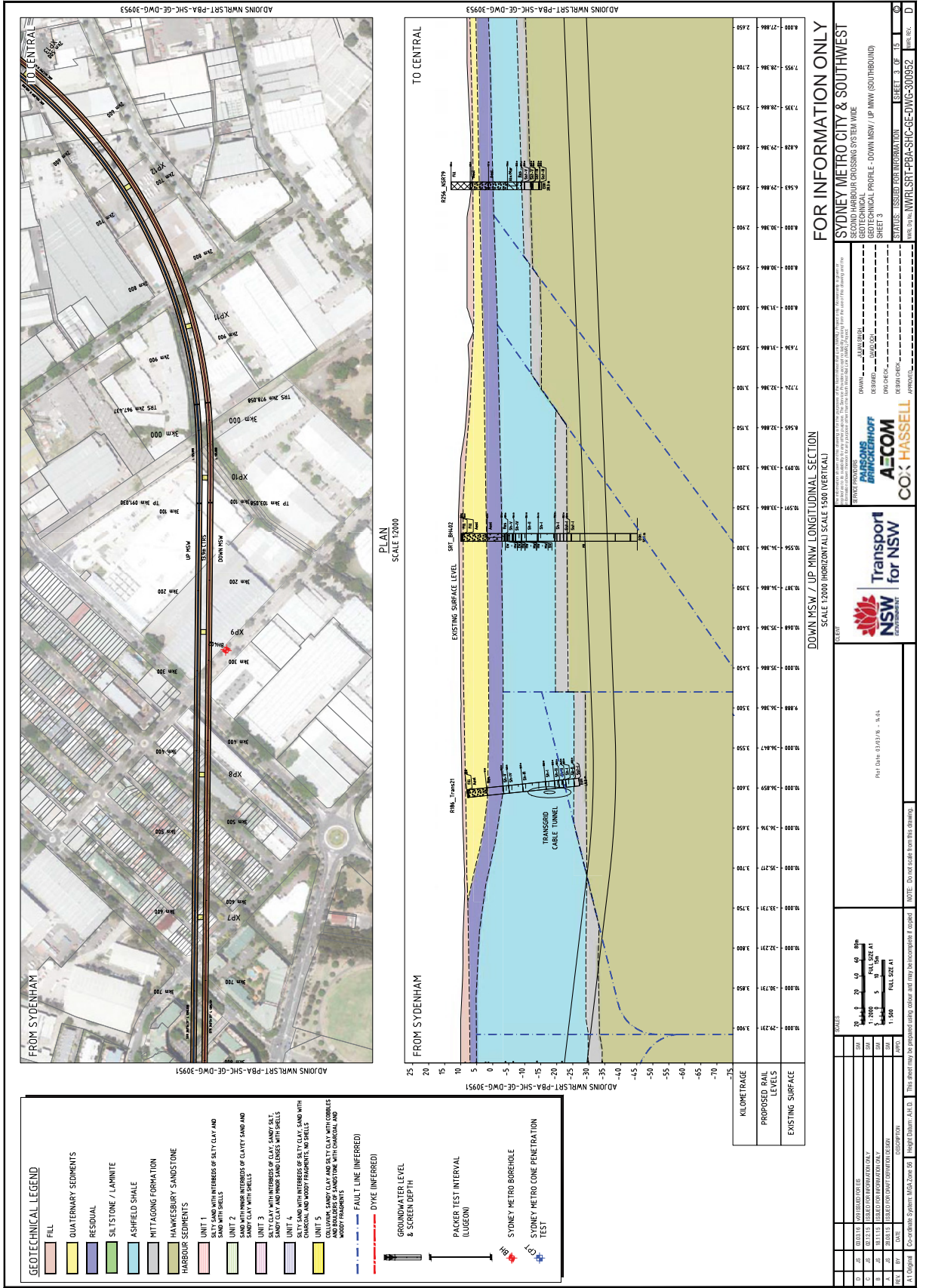
SYDNEY METRO CITY & SOUTHWEST  
 GEOTECHNICAL SECOND HARBOUR CROSSING SYSTEM WIDE  
 GEOTECHNICAL PROFILE - DOWN MSW / UP MNW (SOUTHBOUND)  
 SHEET 2

DATE: 10/12/2019  
 DRAWN BY: [Name]  
 CHECKED BY: [Name]  
 APPROVED BY: [Name]

PROJECT: Sydney Metro City & Southwest  
 SHEET: 2 OF 15

SCALE	VERTICAL	HORIZONTAL
PROPOSED RAIL LEVELS	1:500	1:500
EXISTING SURFACE	1:500	1:500

NOTE: Do not scale from this drawing.



**GEOTECHNICAL LEGEND**

- FILL
- QUATERNARY SEDIMENTS
- RESIDUAL SILTSTONE / LAMINITE
- ASHFIELD SHALE
- MITTAGONG FORMATION
- HAWKESBURY SANDSTONE
- HARBOUR SEDIMENTS
- UNIT 1: SILTY SAND WITH INTERBEDS OF SILTY CLAY AND SAND WITH SHELLS
- UNIT 2: SAND WITH INTERBEDS OF CLAYEY SAND AND SANDY CLAY WITH SHELLS
- UNIT 3: SILTY CLAY WITH INTERBEDS OF CLAYEY SAND AND SANDY CLAY WITH SHELLS
- UNIT 4: SILTY SAND WITH INTERBEDS OF SILTY CLAY AND SAND WITH SHELLS
- UNIT 5: CLAYEY SAND WITH INTERBEDS OF SILTY CLAY AND SAND WITH SHELLS
- UNIT 6: SILTY SAND WITH INTERBEDS OF SILTY CLAY AND SAND WITH SHELLS
- UNIT 7: SANDY SILT WITH INTERBEDS OF SILTY CLAY AND SAND WITH SHELLS
- UNIT 8: SANDY SILT WITH INTERBEDS OF SILTY CLAY AND SAND WITH SHELLS
- UNIT 9: SANDY SILT WITH INTERBEDS OF SILTY CLAY AND SAND WITH SHELLS
- UNIT 10: SANDY SILT WITH INTERBEDS OF SILTY CLAY AND SAND WITH SHELLS
- UNIT 11: SANDY SILT WITH INTERBEDS OF SILTY CLAY AND SAND WITH SHELLS
- UNIT 12: SANDY SILT WITH INTERBEDS OF SILTY CLAY AND SAND WITH SHELLS
- UNIT 13: SANDY SILT WITH INTERBEDS OF SILTY CLAY AND SAND WITH SHELLS
- UNIT 14: SANDY SILT WITH INTERBEDS OF SILTY CLAY AND SAND WITH SHELLS
- UNIT 15: SANDY SILT WITH INTERBEDS OF SILTY CLAY AND SAND WITH SHELLS
- UNIT 16: SANDY SILT WITH INTERBEDS OF SILTY CLAY AND SAND WITH SHELLS
- UNIT 17: SANDY SILT WITH INTERBEDS OF SILTY CLAY AND SAND WITH SHELLS
- UNIT 18: SANDY SILT WITH INTERBEDS OF SILTY CLAY AND SAND WITH SHELLS
- UNIT 19: SANDY SILT WITH INTERBEDS OF SILTY CLAY AND SAND WITH SHELLS
- UNIT 20: SANDY SILT WITH INTERBEDS OF SILTY CLAY AND SAND WITH SHELLS
- UNIT 21: SANDY SILT WITH INTERBEDS OF SILTY CLAY AND SAND WITH SHELLS
- UNIT 22: SANDY SILT WITH INTERBEDS OF SILTY CLAY AND SAND WITH SHELLS
- UNIT 23: SANDY SILT WITH INTERBEDS OF SILTY CLAY AND SAND WITH SHELLS
- UNIT 24: SANDY SILT WITH INTERBEDS OF SILTY CLAY AND SAND WITH SHELLS
- UNIT 25: SANDY SILT WITH INTERBEDS OF SILTY CLAY AND SAND WITH SHELLS
- UNIT 26: SANDY SILT WITH INTERBEDS OF SILTY CLAY AND SAND WITH SHELLS
- UNIT 27: SANDY SILT WITH INTERBEDS OF SILTY CLAY AND SAND WITH SHELLS
- UNIT 28: SANDY SILT WITH INTERBEDS OF SILTY CLAY AND SAND WITH SHELLS
- UNIT 29: SANDY SILT WITH INTERBEDS OF SILTY CLAY AND SAND WITH SHELLS
- UNIT 30: SANDY SILT WITH INTERBEDS OF SILTY CLAY AND SAND WITH SHELLS
- UNIT 31: SANDY SILT WITH INTERBEDS OF SILTY CLAY AND SAND WITH SHELLS
- UNIT 32: SANDY SILT WITH INTERBEDS OF SILTY CLAY AND SAND WITH SHELLS
- UNIT 33: SANDY SILT WITH INTERBEDS OF SILTY CLAY AND SAND WITH SHELLS
- UNIT 34: SANDY SILT WITH INTERBEDS OF SILTY CLAY AND SAND WITH SHELLS
- UNIT 35: SANDY SILT WITH INTERBEDS OF SILTY CLAY AND SAND WITH SHELLS
- UNIT 36: SANDY SILT WITH INTERBEDS OF SILTY CLAY AND SAND WITH SHELLS
- UNIT 37: SANDY SILT WITH INTERBEDS OF SILTY CLAY AND SAND WITH SHELLS
- UNIT 38: SANDY SILT WITH INTERBEDS OF SILTY CLAY AND SAND WITH SHELLS
- UNIT 39: SANDY SILT WITH INTERBEDS OF SILTY CLAY AND SAND WITH SHELLS
- UNIT 40: SANDY SILT WITH INTERBEDS OF SILTY CLAY AND SAND WITH SHELLS
- UNIT 41: SANDY SILT WITH INTERBEDS OF SILTY CLAY AND SAND WITH SHELLS
- UNIT 42: SANDY SILT WITH INTERBEDS OF SILTY CLAY AND SAND WITH SHELLS
- UNIT 43: SANDY SILT WITH INTERBEDS OF SILTY CLAY AND SAND WITH SHELLS
- UNIT 44: SANDY SILT WITH INTERBEDS OF SILTY CLAY AND SAND WITH SHELLS
- UNIT 45: SANDY SILT WITH INTERBEDS OF SILTY CLAY AND SAND WITH SHELLS
- UNIT 46: SANDY SILT WITH INTERBEDS OF SILTY CLAY AND SAND WITH SHELLS
- UNIT 47: SANDY SILT WITH INTERBEDS OF SILTY CLAY AND SAND WITH SHELLS
- UNIT 48: SANDY SILT WITH INTERBEDS OF SILTY CLAY AND SAND WITH SHELLS
- UNIT 49: SANDY SILT WITH INTERBEDS OF SILTY CLAY AND SAND WITH SHELLS
- UNIT 50: SANDY SILT WITH INTERBEDS OF SILTY CLAY AND SAND WITH SHELLS

PROPOSED RAIL LEVELS	EXISTING SURFACE
3+000	3+000
3+050	3+050
3+100	3+100
3+150	3+150
3+200	3+200
3+250	3+250
3+300	3+300
3+350	3+350
3+400	3+400
3+450	3+450
3+500	3+500
3+550	3+550
3+600	3+600
3+650	3+650
3+700	3+700

**SYDNEY METRO CITY & SOUTHWEST**  
**GEOTECHNICAL PROFILE - DOWN MSW / UP MW (SOUTHWEST)**  
**SHEET 3**

STATUS: ISSUED FOR INFORMATION  
 APPROVED: [Signature]  
 DATE: 15/05/2024

PROJECT: SYDNEY METRO CITY & SOUTHWEST  
 SHEET 3 OF 15

