



2 LINCOLN STREET
 LANE COVE
 NSW 2066
 AUSTRALIA
 T: +61 2 9427 8100
 F: +61 2 0801
 www.slrconsulting.com

Project No.:	610.14718
Date:	8/9/2016
Drawn by:	MS
Scale:	1:4,000
Sheet Size:	@A4
Projection:	GDA 1994 MGA Zone 56

Legend

	Shaft Locations
	Crossover Cavern

Exceedances

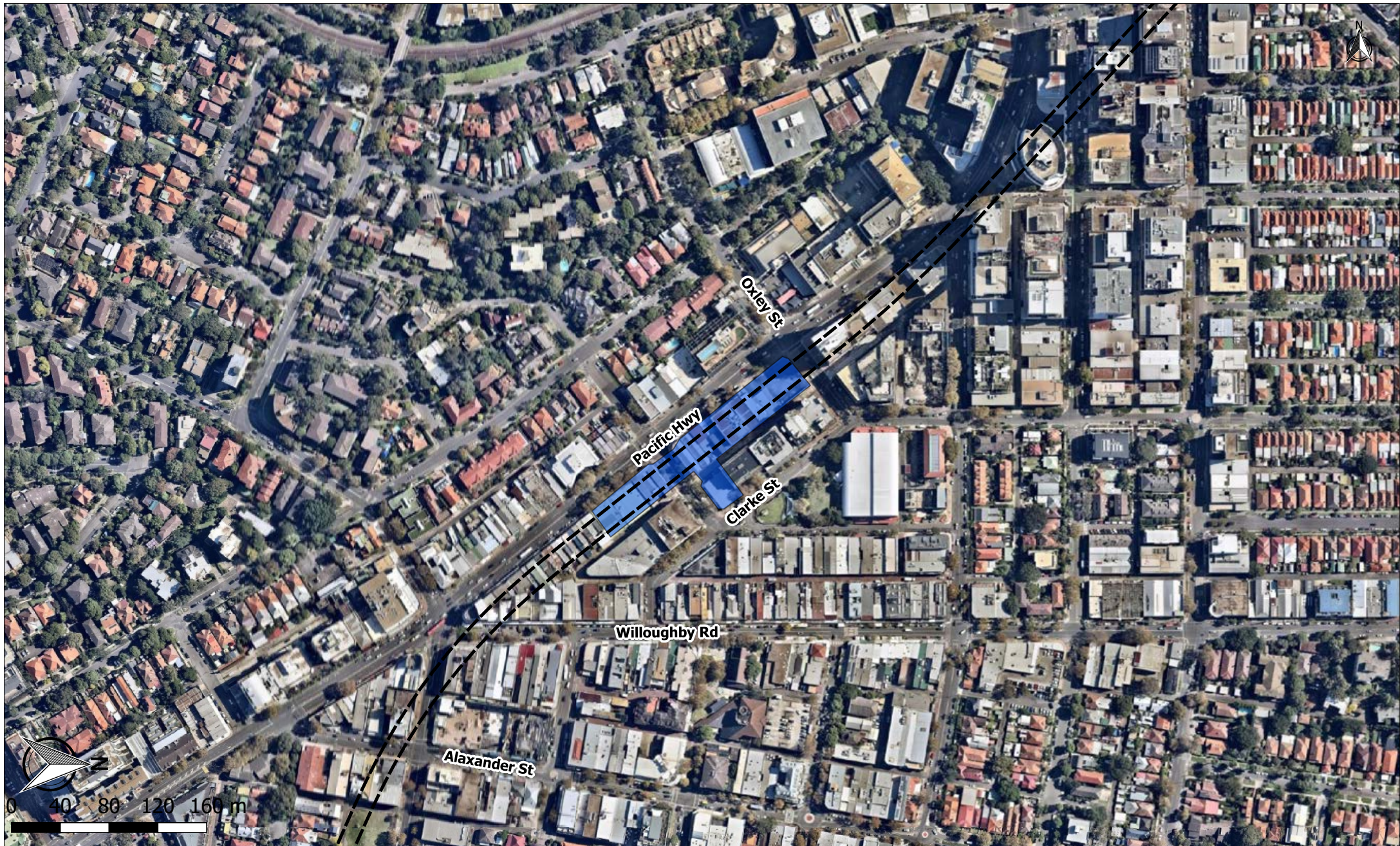
	Other (NML Exceedance 0 to 10 dB)		Residential (NML Exceedance 0 to 10 dB)
	Other (NML Exceedance 10 to 20 dB)		Residential (NML Exceedance 10 to 20 dB)
	Other (NML Exceedance 20 to 25 dB)		Residential (NML Exceedance 20 to 25 dB)
	Other (NML Exceedance > 25 dB)		Residential (NML Exceedance > 25 dB)

Jacobs Group (Australia) Pty Limited

Sydney Metro Chatswood to Sydenham

Ground-Borne Noise Assessment
Day-time
Crows Nest

The content contained within this document may be based on third party data. SLR Consulting Australia Pty Ltd does not guarantee the accuracy of such information.



2 LINCOLN STREET
 LANE COVE
 NSW 2066
 AUSTRALIA
 T: +61 2 9427 8100
 F: +61 2 0801
 www.slrconsulting.com

Project No.:	610.14718
Date:	8/9/2016
Drawn by:	MS
Scale:	1:4,000
Sheet Size:	@A4
Projection:	GDA 1994 MGA Zone 56

Legend

	Shaft Locations
	Crossover Cavern

Exceedances

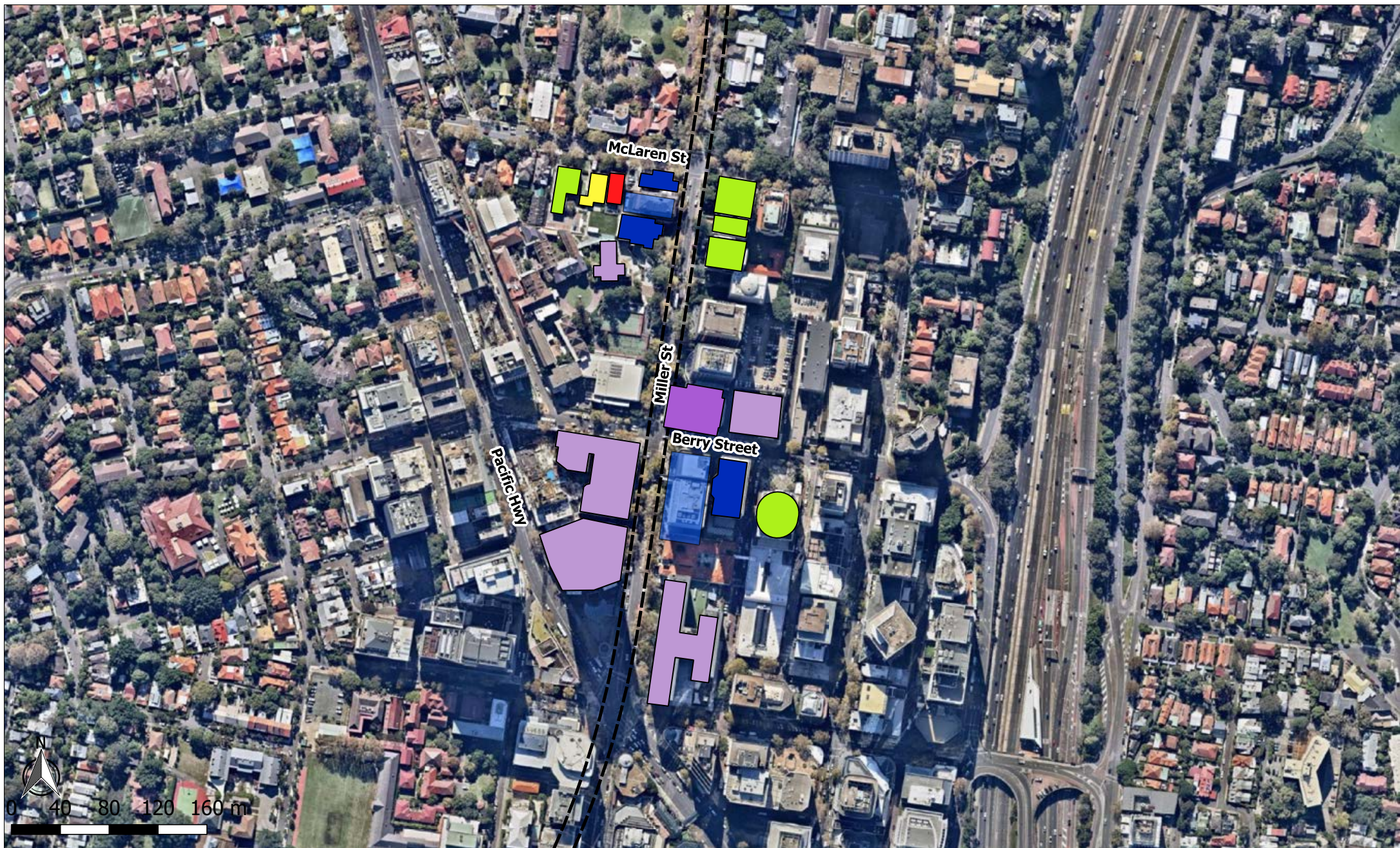
	Residential (NML Exceedance 0 to 10 dB)
	Residential (NML Exceedance 10 to 20 dB)
	Residential (NML Exceedance 20 to 25 dB)
	Residential (NML Exceedance > 25 dB)

Jacobs Group (Australia) Pty Limited

Sydney Metro Chatswood to Sydenham

Ground-Borne Noise Assessment
Night-time
Crows Nest

The content contained within this document may be based on third party data.
 SLR Consulting Australia Pty Ltd does not guarantee the accuracy of such information.



2 LINCOLN STREET
 LANE COVE
 NSW 2066
 AUSTRALIA
 T: +61 2 9427 8100
 F: +61 2 0801
 www.slrconsulting.com

Project No.: 610.14718
 Date: 8/9/2016
 Drawn by: MS
 Scale: 1:4,000
 Sheet Size: @A4
 Projection: GDA 1994 MGA Zone 56

Legend

- Shaft Locations
- Crossover Cavern

Exceedances

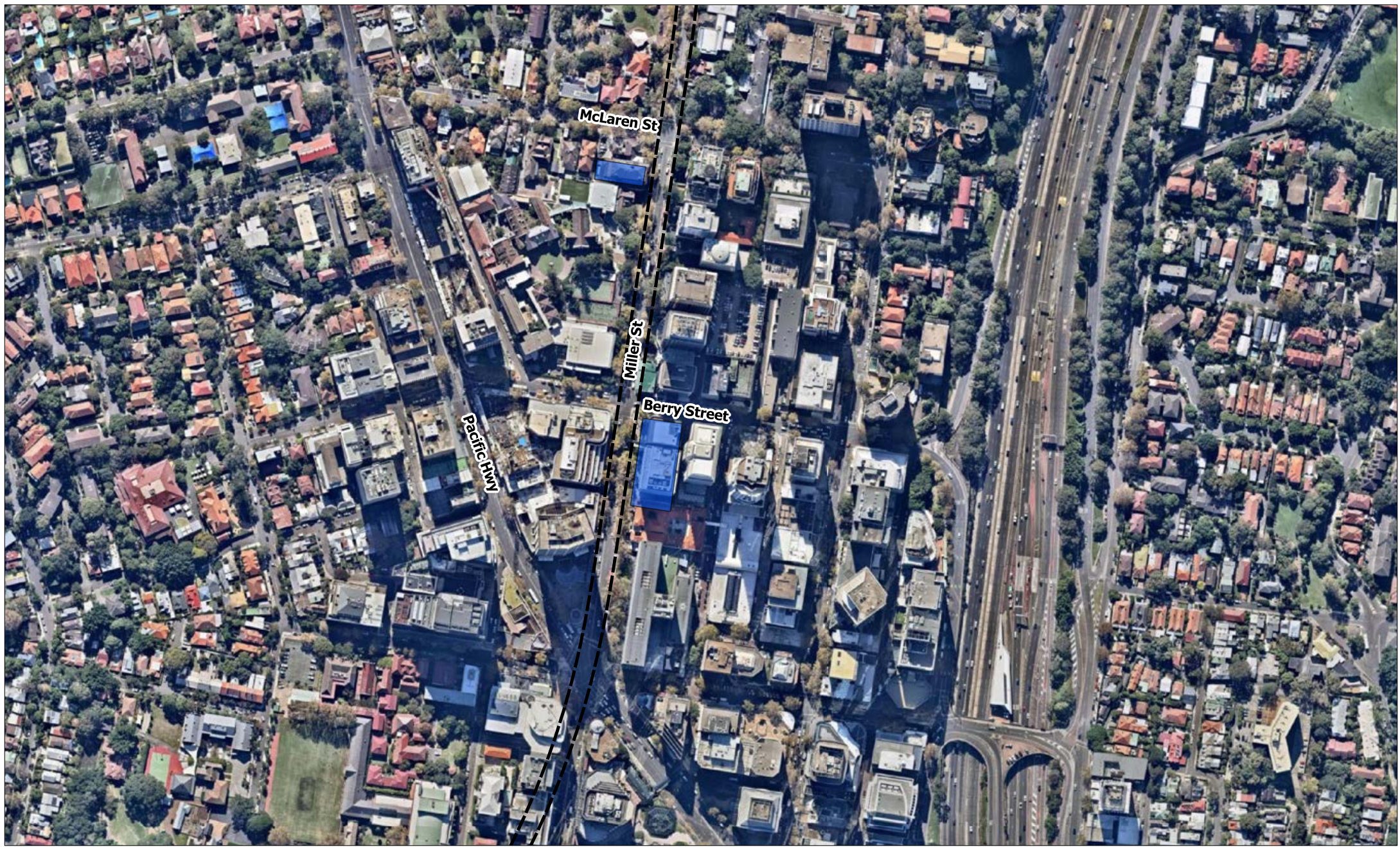
- Other (NML Exceedance 0 to 10 dB)
- Other (NML Exceedance 10 to 20 dB)
- Other (NML Exceedance 20 to 25 dB)
- Other (NML Exceedance > 25 dB)
- Residential (NML Exceedance 0 to 10 dB)
- Residential (NML Exceedance 10 to 20 dB)
- Residential (NML Exceedance 20 to 25 dB)
- Residential (NML Exceedance > 25 dB)

Jacobs Group (Australia) Pty Limited

Sydney Metro Chatswood to Sydenham

Ground-Borne Noise Assessment
Day-time
Victoria Cross

The content contained within this document may be based on third party data. SLR Consulting Australia Pty Ltd does not guarantee the accuracy of such information.



2 LINCOLN STREET
 LANE COVE
 NSW 2066
 AUSTRALIA
 T: +61 2 9427 8100
 F: +61 2 0801
 www.slrconsulting.com

Project No.:	610.14718
Date:	8/9/2016
Drawn by:	MS
Scale:	1:1
Sheet Size:	@A4
Projection:	GDA 1994 MGA Zone 56

Legend

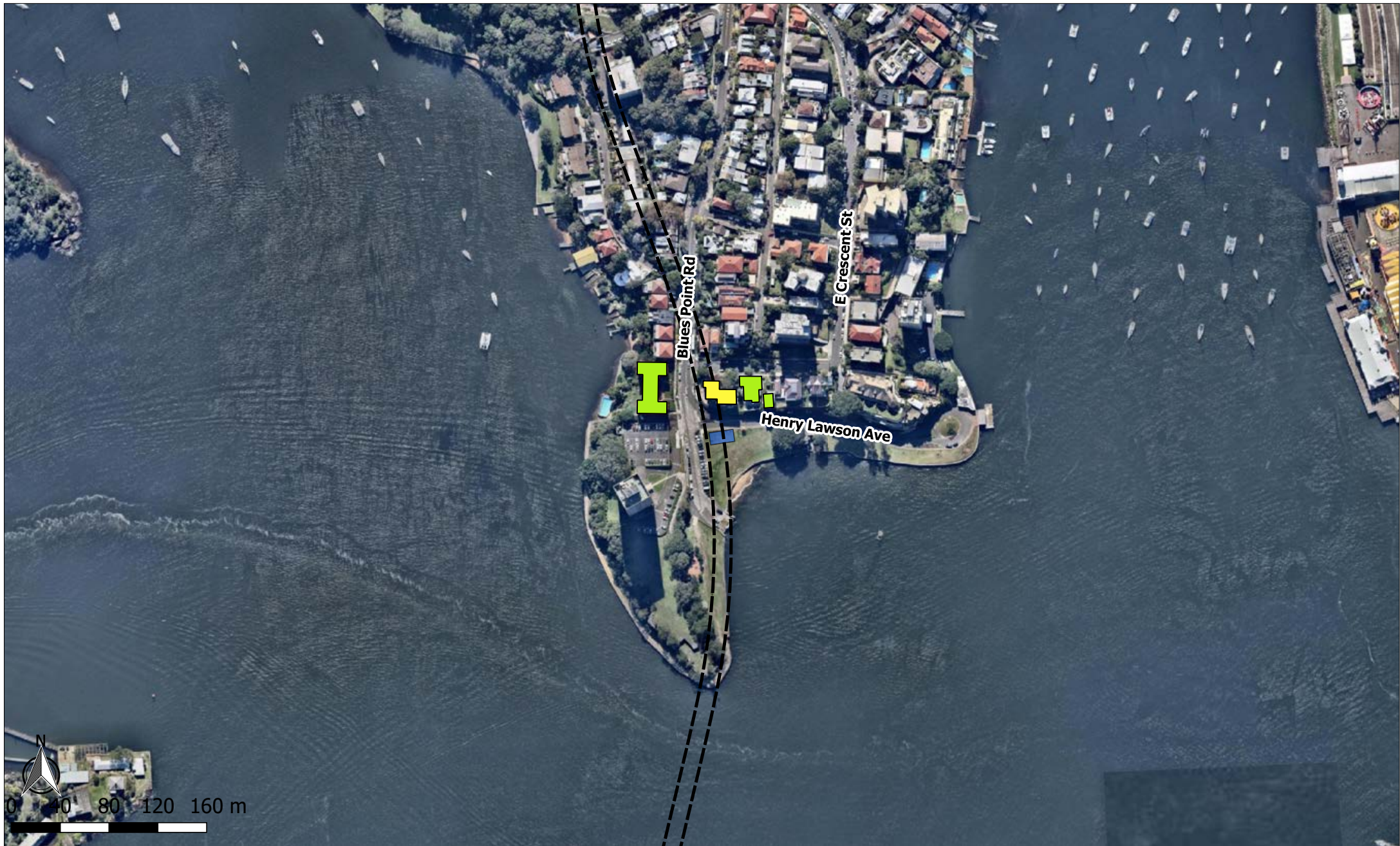
	Shaft Locations
	Crossover Cavern

Exceedances

	Residential (NML Exceedance 0 to 10 dB)
	Residential (NML Exceedance 10 to 20 dB)
	Residential (NML Exceedance 20 to 25 dB)
	Residential (NML Exceedance > 25 dB)

The content contained within this document may be based on third party data.
 SLR Consulting Australia Pty Ltd does not guarantee the accuracy of such information.

Jacobs Group (Australia) Pty Limited
Sydney Metro Chatswood to Sydenham
Ground-Borne Noise Assessment
Night-time
Victoria Cross



2 LINCOLN STREET
 LANE COVE
 NSW 2066
 AUSTRALIA
 T: +61 2 9427 8100
 F: +61 2 0801
 www.slrconsulting.com

Project No.:	610.14718
Date:	8/9/2016
Drawn by:	MS
Scale:	1:4,000
Sheet Size:	@A4
Projection:	GDA 1994 MGA Zone 56

Legend

	Shaft Locations
	Crossover Cavern

Exceedances

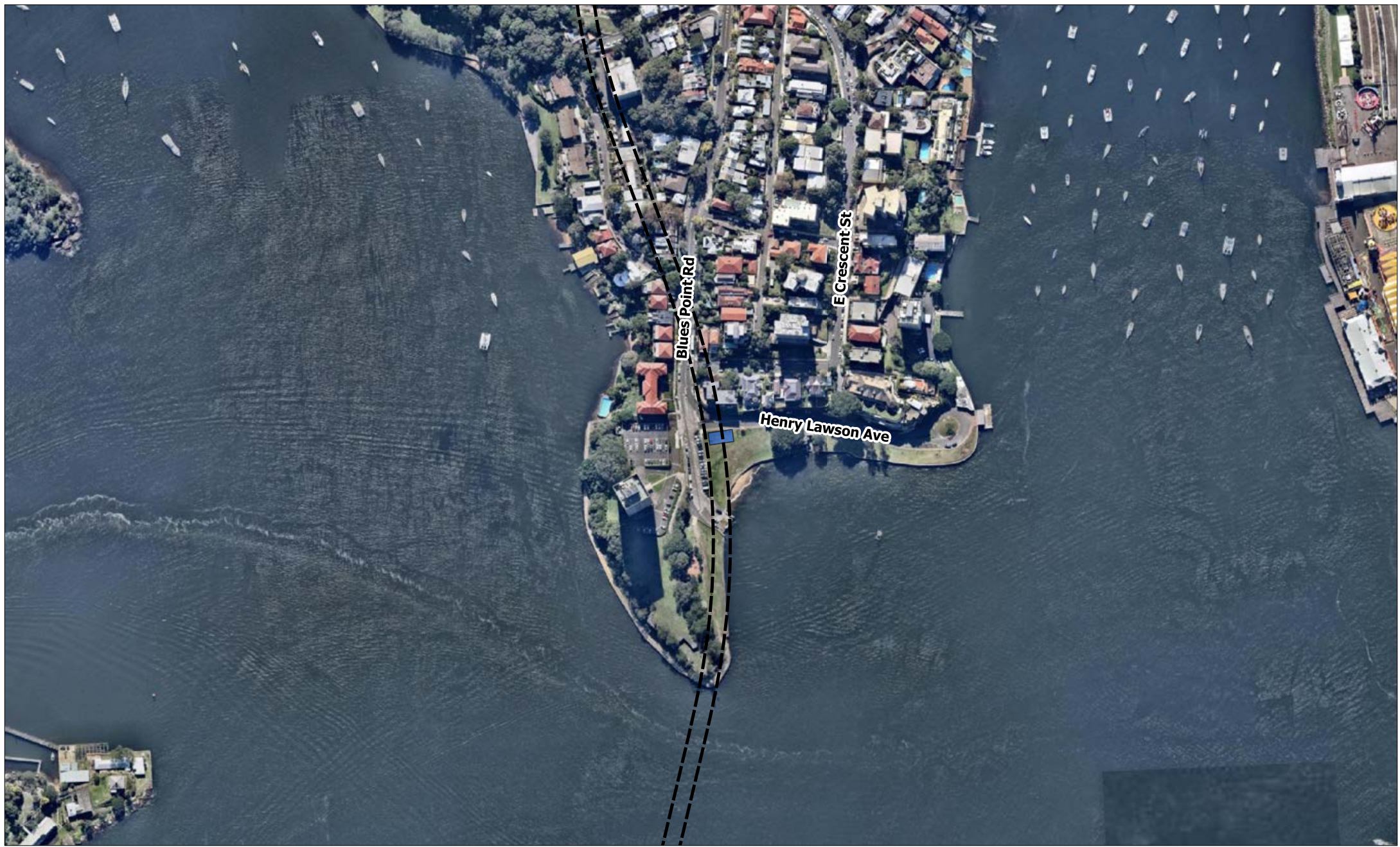
	Other (NML Exceedance 0 to 10 dB)		Residential (NML Exceedance 0 to 10 dB)
	Other (NML Exceedance 10 to 20 dB)		Residential (NML Exceedance 10 to 20 dB)
	Other (NML Exceedance 20 to 25 dB)		Residential (NML Exceedance 20 to 25 dB)
	Other (NML Exceedance > 25 dB)		Residential (NML Exceedance > 25 dB)

Jacobs Group (Australia) Pty Limited

Sydney Metro Chatswood to Sydenham

Ground-Borne Noise Assessment
Day-time
Blues Point



The content contained within this document may be based on third party data. SLR Consulting Australia Pty Ltd does not guarantee the accuracy of such information.







SLR 

2 LINCOLN STREET
 LANE COVE
 NSW 2066
 AUSTRALIA
 T: +61 2 9427 8100
 F: +61 2 0801
 www.slrconsulting.com

Project No.:	610.14718
Date:	8/9/2016
Drawn by:	MS
Scale:	1:4,000
Sheet Size:	@A4
Projection:	GDA 1994 MGA Zone 56

- Legend**
-  Shaft Locations
 -  Crossover Cavern

- Exceedances**
-  Residential (NML Exceedance 0 to 10 dB)
 -  Residential (NML Exceedance 10 to 20 dB)
 -  Residential (NML Exceedance 20 to 25 dB)
 -  Residential (NML Exceedance > 25 dB)

The content contained within this document may be based on third party data.
 SLR Consulting Australia Pty Ltd does not guarantee the accuracy of such information.

Jacobs Group (Australia) Pty Limited

Sydney Metro Chatswood to Sydenham

Ground-Borne Noise Assessment
Night-time
Barangaroo





 2 LINCOLN STREET
 LANE COVE
 NSW 2066
 AUSTRALIA
 T: +61 2 9427 8100
 F: +61 2 0801
 www.slrconsulting.com









The content contained within this document may be based on third party data.
 SLR Consulting Australia Pty Ltd does not guarantee the accuracy of such information.

Project No.:	610.14718
Date:	8/9/2016
Drawn by:	MS
Scale:	1:4,000
Sheet Size:	@A4
Projection:	GDA 1994 MGA Zone 56

Legend

	Shaft Locations
	Crossover Cavern

Exceedances

	Other (NML Exceedance 0 to 10 dB)		Residential (NML Exceedance 0 to 10 dB)
	Other (NML Exceedance 10 to 20 dB)		Residential (NML Exceedance 10 to 20 dB)
	Other (NML Exceedance 20 to 25 dB)		Residential (NML Exceedance 20 to 25 dB)
	Other (NML Exceedance > 25 dB)		Residential (NML Exceedance > 25 dB)

Jacobs Group (Australia) Pty Limited
Sydney Metro Chatswood to Sydenham
Ground-Borne Noise Assessment
Day-time
Barangaroo



2 LINCOLN STREET
LANE COVE
NSW 2066
AUSTRALIA
T: +61 2 9427 8100
F: +61 2 0801
www.slrconsulting.com

Project No.:	610.14718
Date:	8/9/2016
Drawn by:	MS
Scale:	1:4,000
Sheet Size:	@A4
Projection:	GDA 1994 MGA Zone 56

Legend

- Shaft Locations
- Crossover Cavern

Exceedances

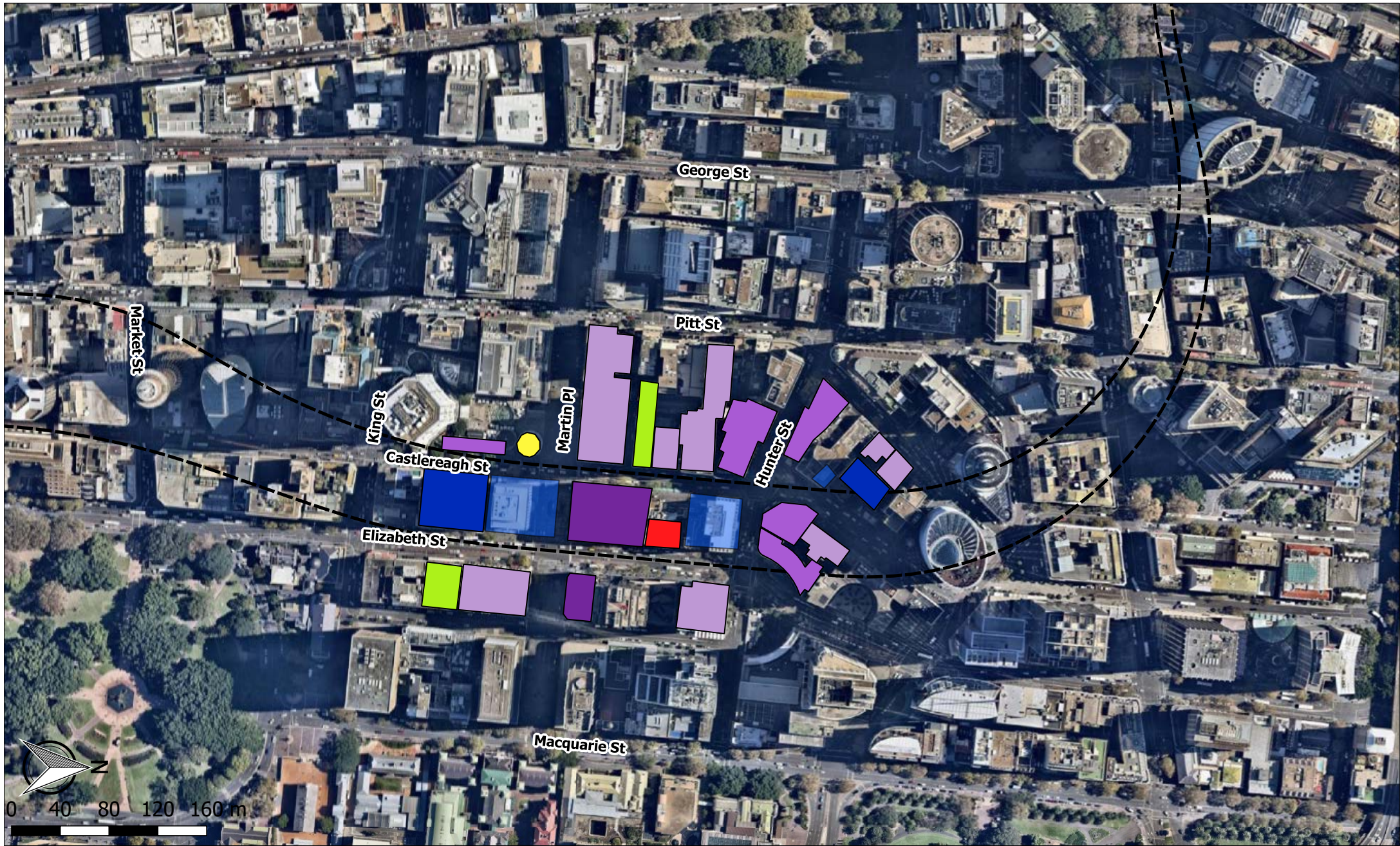
- Residential (NML Exceedance 0 to 10 dB)
- Residential (NML Exceedance 10 to 20 dB)
- Residential (NML Exceedance 20 to 25 dB)
- Residential (NML Exceedance > 25 dB)

Jacobs Group (Australia) Pty Limited

Sydney Metro Chatswood to Sydenham



**Ground-Borne Noise Assessment
Night-time
Barangaroo**









The content contained within this document may be based on third party data.
SLR Consulting Australia Pty Ltd does not guarantee the accuracy of such information.




 2 LINCOLN STREET
 LANE COVE
 NSW 2066
 AUSTRALIA
 T: +61 2 9427 8100
 F: +61 2 0801
 www.slronline.com

Project No.: 610.14718
 Date: 8/9/2016
 Drawn by: MS
 Scale: 1:4,000
 Sheet Size: @A4
 Projection: GDA 1994 MGA Zone 56

Legend
 Shaft Locations
 Crossover Cavern

Exceedances
 Other (NML Exceedance 0 to 10 dB)
 Other (NML Exceedance 10 to 20 dB)
 Other (NML Exceedance 20 to 25 dB)
 Other (NML Exceedance > 25 dB)
 Residential (NML Exceedance 0 to 10 dB)
 Residential (NML Exceedance 10 to 20 dB)
 Residential (NML Exceedance 20 to 25 dB)
 Residential (NML Exceedance > 25 dB)

Jacobs Group (Australia) Pty Limited
Sydney Metro Chatswood to Sydenham
Ground-Borne Noise Assessment
Day-time
Martin Place

The content contained within this document may be based on third party data. SLR Consulting Australia Pty Ltd does not guarantee the accuracy of such information.



2 LINCOLN STREET
 LANE COVE
 NSW 2066
 AUSTRALIA
 T: +61 2 9427 8100
 F: +61 2 0801
 www.slrconsulting.com

Project No.:	610.14718
Date:	8/9/2016
Drawn by:	MS
Scale:	1:4,000
Sheet Size:	@A4
Projection:	GDA 1994 MGA Zone 56

Legend

- Shaft Locations
- Crossover Cavern

Exceedances

- Residential (NML Exceedance 0 to 10 dB)
- Residential (NML Exceedance 10 to 20 dB)
- Residential (NML Exceedance 20 to 25 dB)
- Residential (NML Exceedance > 25 dB)

Jacobs Group (Australia) Pty Limited

Sydney Metro Chatswood to Sydenham

Ground-Borne Noise Assessment
Night-time
Martin Place

The content contained within this document may be based on third party data. SLR Consulting Australia Pty Ltd does not guarantee the accuracy of such information.




 2 LINCOLN STREET
 LANE COVE
 NSW 2066
 AUSTRALIA
 T: +61 2 9427 8100
 F: +61 2 0801
 www.slrconsulting.com

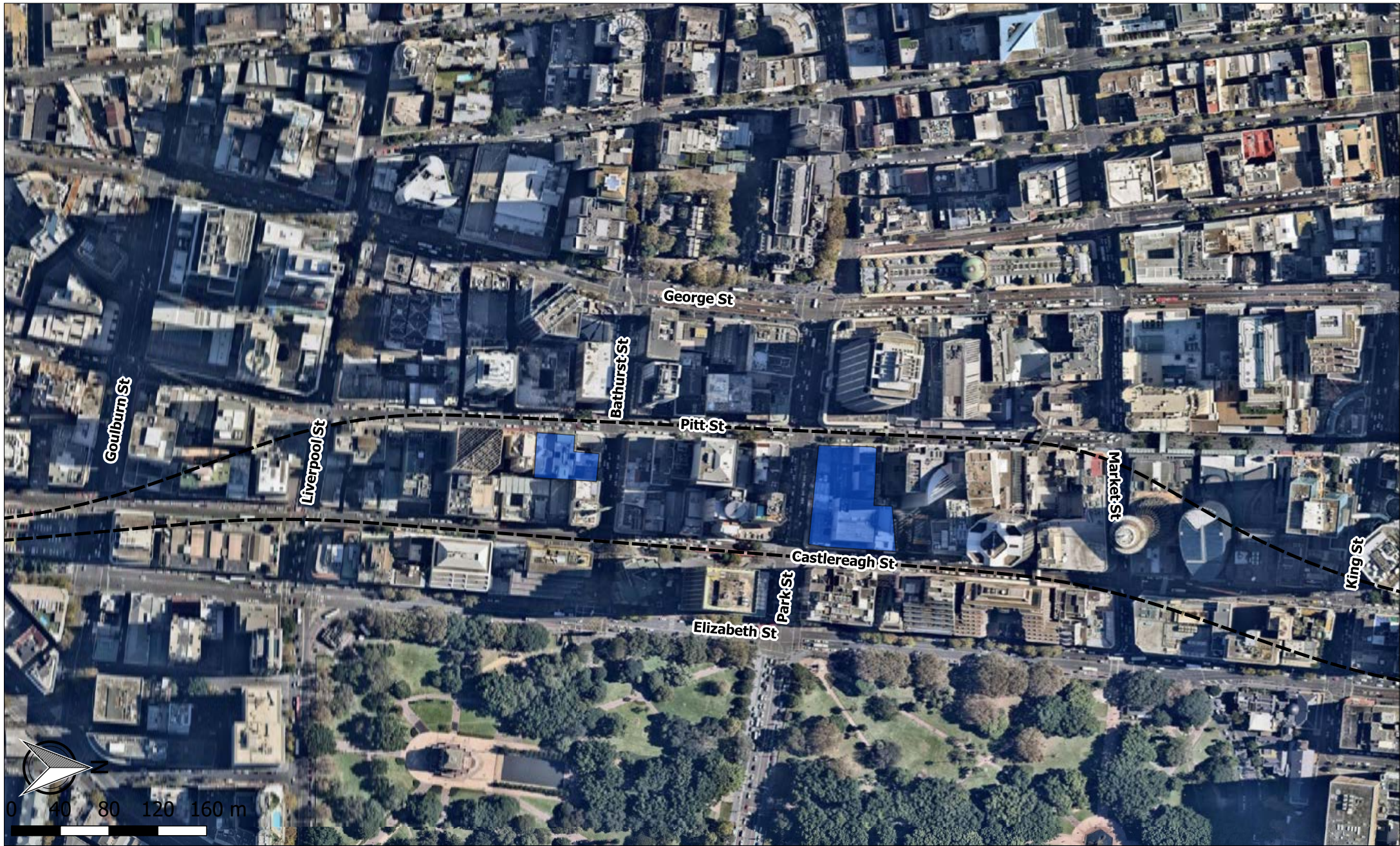
Project No.:	610.14718
Date:	8/9/2016
Drawn by:	MS
Scale:	1:4,000
Sheet Size:	@A4
Projection:	GDA 1994 MGA Zone 56

- Legend**
- Shaft Locations
 - Crossover Cavern

- Exceedances**
- Other (NML Exceedance 0 to 10 dB)
 - Residential (NML Exceedance 0 to 10 dB)
 - Other (NML Exceedance 10 to 20 dB)
 - Residential (NML Exceedance 10 to 20 dB)
 - Other (NML Exceedance 20 to 25 dB)
 - Residential (NML Exceedance 20 to 25 dB)
 - Other (NML Exceedance > 25 dB)
 - Residential (NML Exceedance > 25 dB)

Jacobs Group (Australia) Pty Limited
Sydney Metro Chatswood to Sydenham
Ground-Borne Noise Assessment
Day-time
Pitt Street

The content contained within this document may be based on third party data. SLR Consulting Australia Pty Ltd does not guarantee the accuracy of such information.






 2 LINCOLN STREET
 LANE COVE
 NSW 2066
 AUSTRALIA
 T: +61 2 9427 8100
 F: +61 2 0801
 www.slrconsulting.com





The content contained within this document may be based on third party data.
 SLR Consulting Australia Pty Ltd does not guarantee the accuracy of such information.

Project No.:	610.14718
Date:	8/9/2016
Drawn by:	MS
Scale:	1:4,000
Sheet Size:	@A4
Projection:	GDA 1994 MGA Zone 56

Legend

	Shaft Locations
	Crossover Cavern

Exceedances

	Residential (NML Exceedance 0 to 10 dB)
	Residential (NML Exceedance 10 to 20 dB)
	Residential (NML Exceedance 20 to 25 dB)
	Residential (NML Exceedance > 25 dB)

Jacobs Group (Australia) Pty Limited
Sydney Metro Chatswood to Sydenham
Ground-Bourne Noise Assessment
Night-time
Pitt Street



2 LINCOLN STREET
LANE COVE
NSW 2066
AUSTRALIA
T: +61 2 9427 8100
F: +61 2 0801
www.slrconsulting.com

Project No.: 610.14718
Date: 7/7/2016
Drawn by: MS
Scale: 1:5,000
Sheet Size: @A4
Projection: GDA 1994 MGA Zone 56

Legend

- One Storey Receiver
- >One Storey Receiver
- Shaft Locations
- Crossover Cavern

Exceedances

- Other (NML Exceedance 0 to 10 dB)
- Other (NML Exceedance 10 to 20 dB)
- Other (NML Exceedance 20 to 25 dB)
- Other (NML Exceedance > 25 dB)
- Residential (NML Exceedance 0 to 10 dB)
- Residential (NML Exceedance 10 to 20 dB)
- Residential (NML Exceedance 20 to 25 dB)
- Residential (NML Exceedance > 25 dB)

Jacobs Group (Australia) Pty Limited

Sydney Metro Chatswood to Sydenham

Ground-Borne Noise Assessment
Day-time
Central Station

The content contained within this document may be based on third party data. SLR Consulting Australia Pty Ltd does not guarantee the accuracy of such information.




 2 LINCOLN STREET
 LANE COVE
 NSW 2066
 AUSTRALIA
 T: +61 2 9427 8100
 F: +61 2 0801
 www.slrconsulting.com

The content contained within this document may be based on third party data.
 SLR Consulting Australia Pty Ltd does not guarantee the accuracy of such information.

Project No.:	610.14718
Date:	7/7/2016
Drawn by:	MS
Scale:	1:5,000
Sheet Size:	@A4
Projection:	GDA 1994 MGA Zone 56

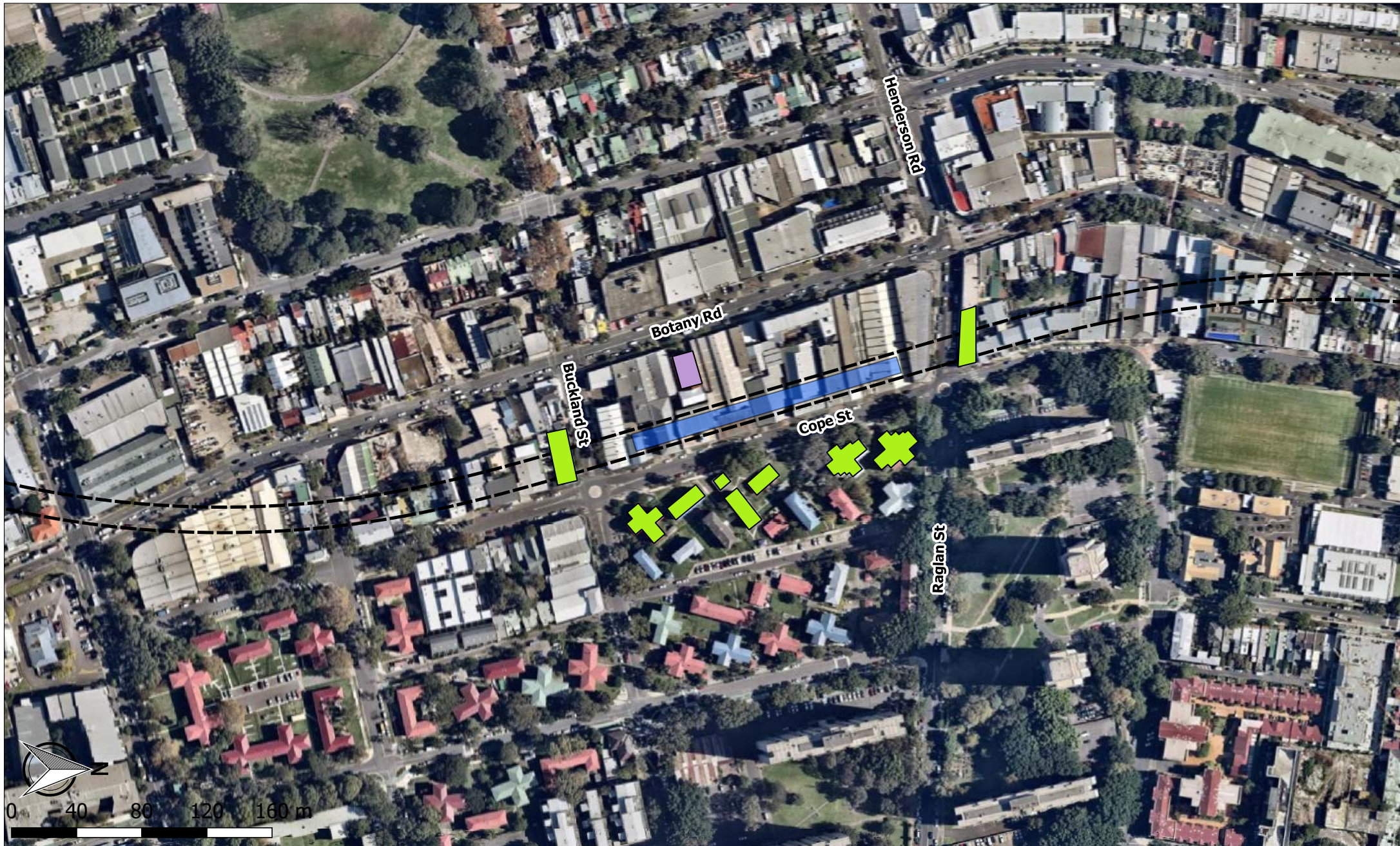
Legend

	One Storey Receiver
	>One Storey Receiver
	Shaft Locations
	Crossover Cavern

Exceedances

	Residential (NML Exceedance 0 to 10 dB)
	Residential (NML Exceedance 10 to 20 dB)
	Residential (NML Exceedance > 20 dB)

Jacobs Group (Australia) Pty Limited
Sydney Metro Chatswood to Sydenham
Ground-Borne Noise Assessment
Night-time
Central Station



2 LINCOLN STREET
 LANE COVE
 NSW 2066
 AUSTRALIA
 T: +61 2 9427 8100
 F: +61 2 0801
 www.slrc consulting.com

Project No.:	610.14718
Date:	8/9/2016
Drawn by:	MS
Scale:	1:3,000
Sheet Size:	@A4
Projection:	GDA 1994 MGA Zone 56

Legend

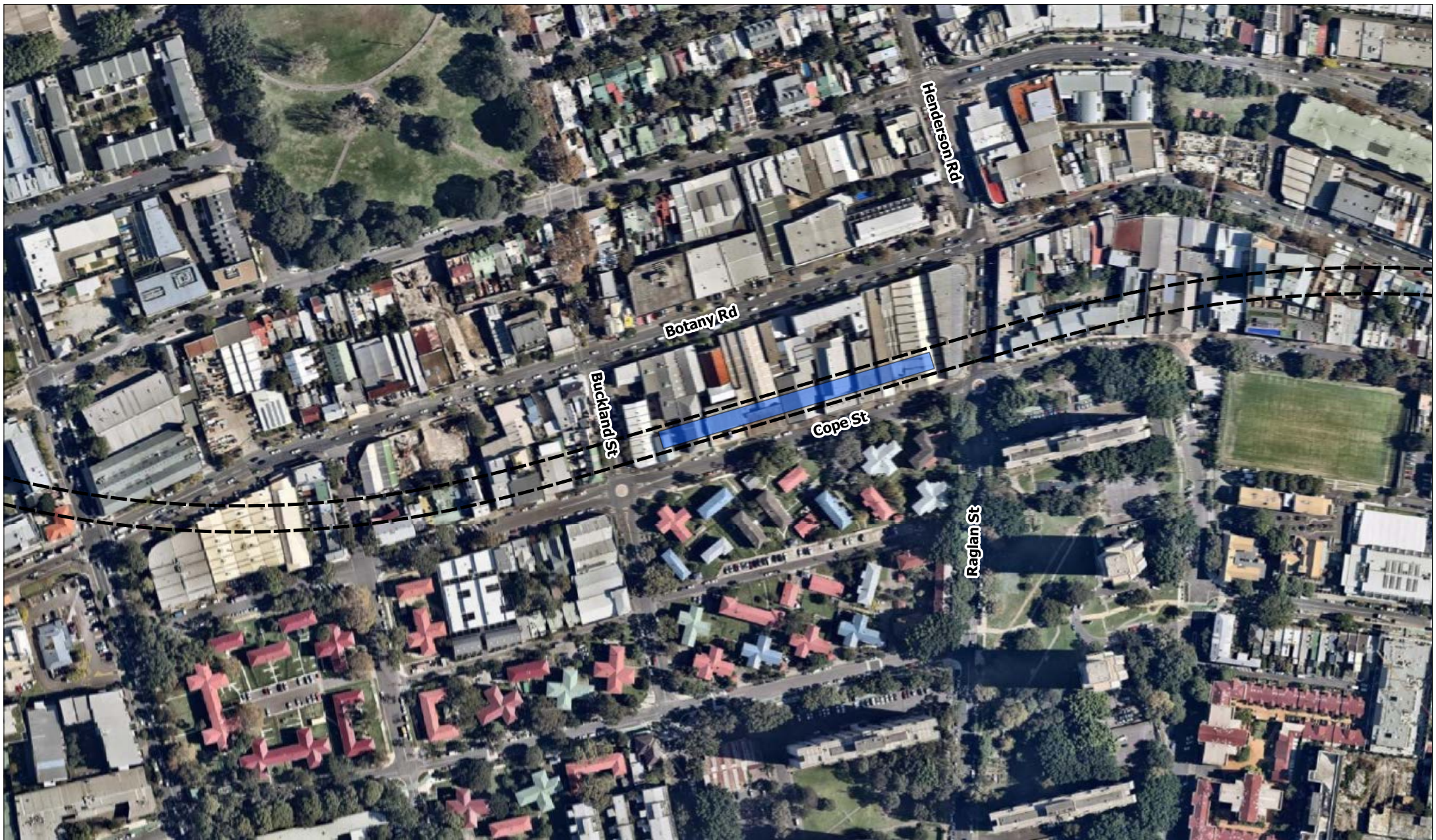
	Shaft Locations
	Crossover Cavern

Exceedances

	Other (NML Exceedance 0 to 10 dB)		Residential (NML Exceedance 0 to 10 dB)
	Other (NML Exceedance 10 to 20 dB)		Residential (NML Exceedance 10 to 20 dB)
	Other (NML Exceedance 20 to 25 dB)		Residential (NML Exceedance 20 to 25 dB)
	Other (NML Exceedance > 25 dB)		Residential (NML Exceedance > 25 dB)

Jacobs Group (Australia) Pty Limited
Sydney Metro Chatswood to Sydenham
Ground-Bourne Noise Assessment
Day-time
Waterloo

The content contained within this document may be based on third party data. SLR Consulting Australia Pty Ltd does not guarantee the accuracy of such information.



2 LINCOLN STREET
LANE COVE
NSW 2066
AUSTRALIA
T: +61 2 9427 8100
F: +61 2 0801
www.slrconsulting.com

Project No.:	610.14718
Date:	8/9/2016
Drawn by:	MS
Scale:	1:4,000
Sheet Size:	@A4
Projection:	GDA 1994 MGA Zone 56

Legend

- Shaft Locations
- Crossover Cavern

Exceedances

- Residential (NML Exceedance 0 to 10 dB)
- Residential (NML Exceedance 10 to 20 dB)
- Residential (NML Exceedance 20 to 25 dB)
- Residential (NML Exceedance > 25 dB)

Jacobs Group (Australia) Pty Limited

Sydney Metro Chatswood to Sydenham

Ground-Borne Noise Assessment
Night-time
Waterloo

The content contained within this document may be based on third party data. SLR Consulting Australia Pty Ltd does not guarantee the accuracy of such information.

Report Number 610.14718R2

CONSTRUCTION VIBRATION PREDICTIONS



2 LINCOLN STREET
 LANE COVE
 NSW 2066
 AUSTRALIA
 T: +61 2 9427 8100
 F: +61 2 0801
 www.slrconsulting.com

Project No.:	610.14718
Date:	8/9/2016
Drawn by:	MS
Scale:	1:1
Sheet Size:	@A4
Projection:	GDA 1994 MGA Zone 56

Legend

- Shaft Locations
- Crossover Cavern

Exceedances

- No Exceedance
- Exceedance

The content contained within this document may be based on third party data.
 SLR Consulting Australia Pty Ltd does not guarantee the accuracy of such information.

Jacobs Group (Australia) Pty Limited

Sydney Metro Chatswood to Sydenham
Cosmetic Damage Vibration Assessment
Exceedance of Screening Criteria
Chatswood



2 LINCOLN STREET
 LANE COVE
 NSW 2066
 AUSTRALIA
 T: +61 2 9427 8100
 F: +61 2 0801
 www.slrconsulting.com

Project No.: 610.14718
 Date: 8/9/2016
 Drawn by: MS
 Scale: 1:4,000
 Sheet Size: @A4
 Projection: GDA 1994 MGA Zone 56

Legend

- Shaft Locations
- Crossover Cavern

Exceedances

- No Exceedance
- Exceedance

The content contained within this document may be based on third party data. SLR Consulting Australia Pty Ltd does not guarantee the accuracy of such information.

Jacobs Group (Australia) Pty Limited

Sydney Metro Chatswood to Sydenham

**Cosmetic Damage Vibration Assessment
 Exceedance of Screening Criteria
 Artarmon**



2 LINCOLN STREET
 LANE COVE
 NSW 2066
 AUSTRALIA
 T: +61 2 9427 8100
 F: +61 2 0801
 www.slrconsulting.com

Project No.: 610.14718
 Date: 8/9/2016
 Drawn by: MS
 Scale: 1:4,000
 Sheet Size: @A4
 Projection: GDA 1994 MGA Zone 56

Legend
 Shaft Locations
 Crossover Cavern

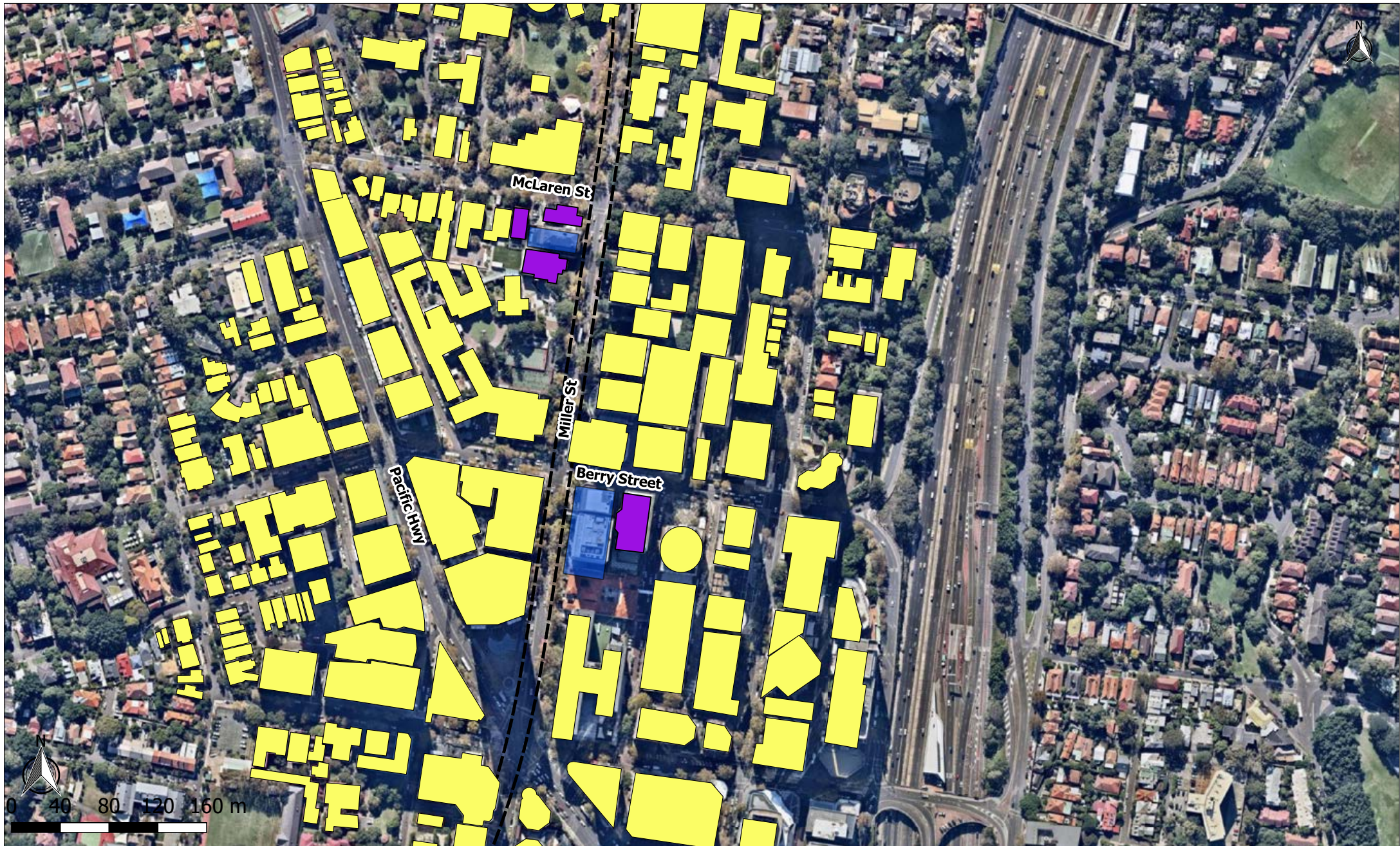
Exceedances
 No Exceedance
 Exceedance

The content contained within this document may be based on third party data. SLR Consulting Australia Pty Ltd does not guarantee the accuracy of such information.

Jacobs Group (Australia) Pty Limited

Sydney Metro Chatswood to Sydenham

Cosmetic Damage Vibration Assessment
 Exceedance of Screening Criteria
 Crows Nest



2 LINCOLN STREET
 LANE COVE
 NSW 2066
 AUSTRALIA
 T: +61 2 9427 8100
 F: +61 2 0801
 www.slrconsulting.com

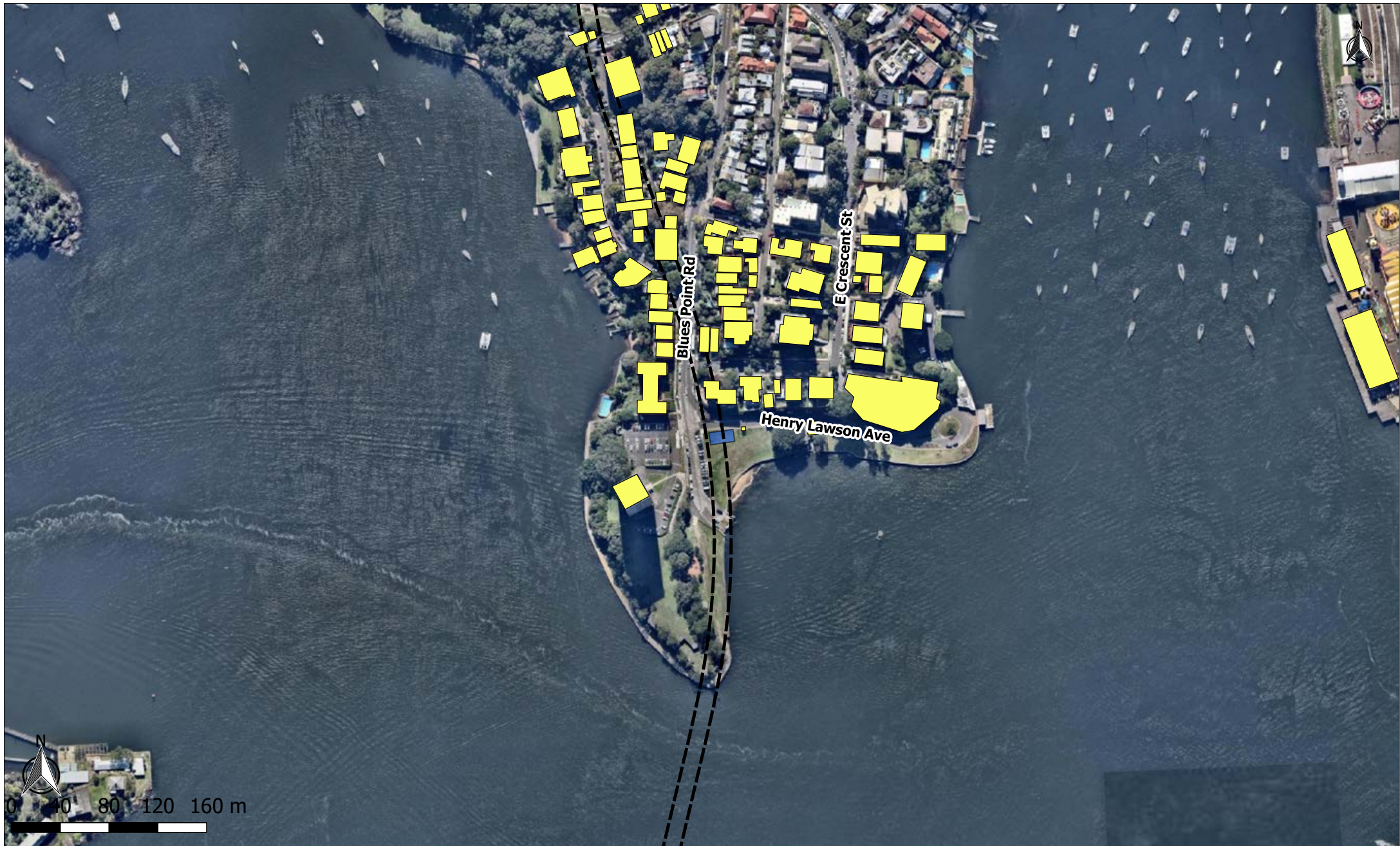
Project No.: 610.14718
 Date: 8/9/2016
 Drawn by: MS
 Scale: 1:4,000
 Sheet Size: @A4
 Projection: GDA 1994 MGA Zone 56

- Legend**
- Shaft Locations
 - Crossover Cavern

- Exceedances**
- No Exceedance
 - Exceedance

The content contained within this document may be based on third party data. SLR Consulting Australia Pty Ltd does not guarantee the accuracy of such information.


Jacobs Group (Australia) Pty Limited
 Sydney Metro Chatswood to Sydenham
Cosmetic Damage Vibration Assessment
Exceedance of Screening Criteria
Victoria Cross



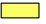


 2 LINCOLN STREET
 LANE COVE
 NSW 2066
 AUSTRALIA
 T: +61 2 9427 8100
 F: +61 2 0801
 www.slrconsulting.com

Project No.:	610.14718
Date:	8/9/2016
Drawn by:	MS
Scale:	1:4,000
Sheet Size:	@A4
Projection:	GDA 1994 MGA Zone 56

Legend

-  Shaft Locations
-  Crossover Cavern

Exceedances

-  No Exceedance
-  Exceedance

Jacobs Group (Australia) Pty Limited

Sydney Metro Chatswood to Sydenham

Cosmetic Damage Vibration Assessment
Exceedance of Screening Criteria
Blues Point

The content contained within this document may be based on third party data. SLR Consulting Australia Pty Ltd does not guarantee the accuracy of such information.



2 LINCOLN STREET
 LANE COVE
 NSW 2066
 AUSTRALIA
 T: +61 2 9427 8100
 F: +61 2 0801
 www.slrconsulting.com

Project No.: 610.14718
 Date: 8/9/2016
 Drawn by: MS
 Scale: 1:4,000
 Sheet Size: @A4
 Projection: GDA 1994 MGA Zone 56

Legend
 Shaft Locations
 Crossover Cavern

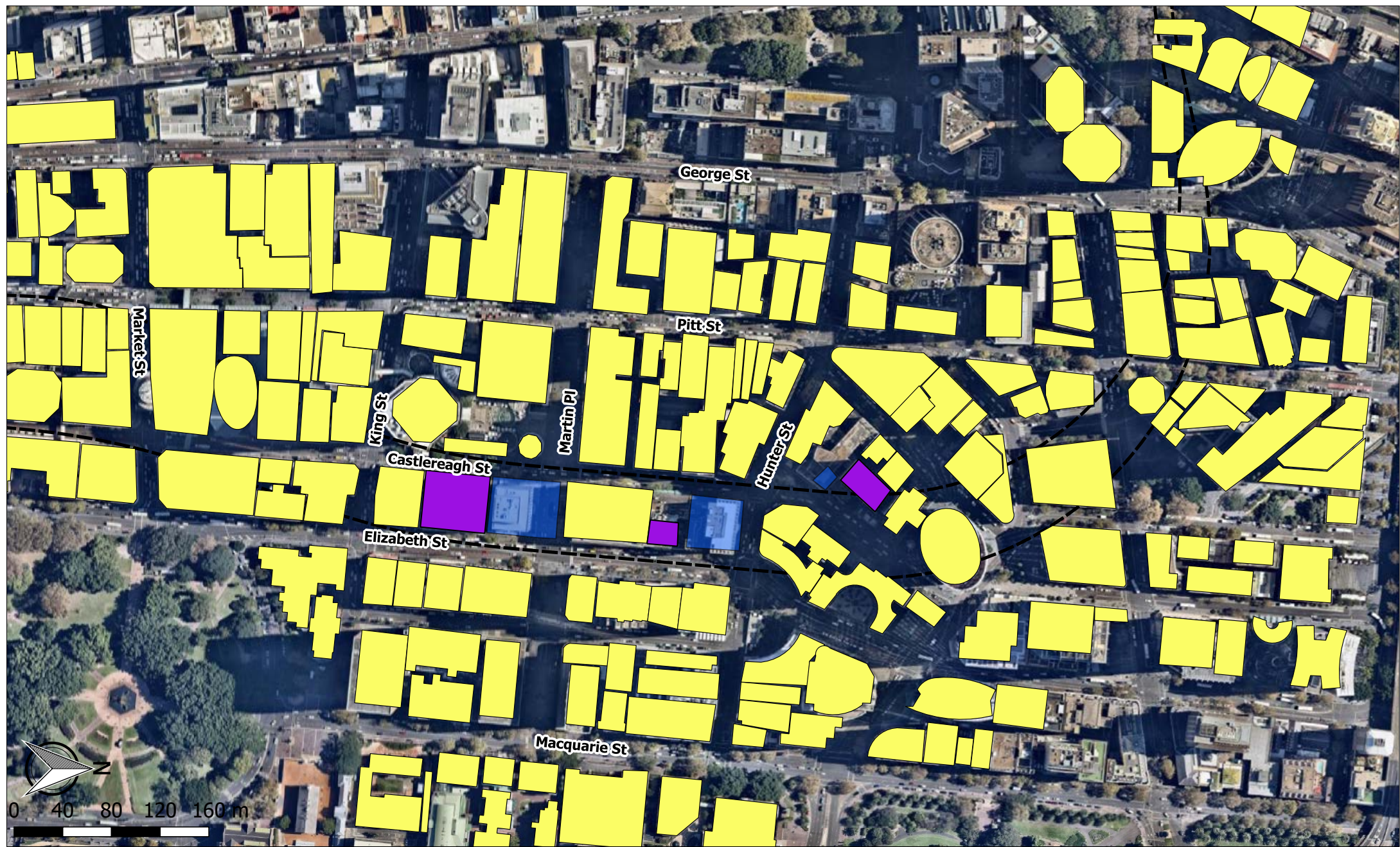
Exceedances
 No Exceedance
 Exceedance

The content contained within this document may be based on third party data.
 SLR Consulting Australia Pty Ltd does not guarantee the accuracy of such information.

Jacobs Group (Australia) Pty Limited

Sydney Metro Chatswood to Sydenham

**Cosmetic Damage Vibration Assessment
 Exceedance of Screening Criteria
 Barangaroo**




 2 LINCOLN STREET
 LANE COVE
 NSW 2066
 AUSTRALIA
 T: +61 2 9427 8100
 F: +61 2 0801
 www.slrconsulting.com

The content contained within this document may be based on third party data.
 SLR Consulting Australia Pty Ltd does not guarantee the accuracy of such information.

Project No.:	610.14718
Date:	8/9/2016
Drawn by:	MS
Scale:	1:4,000
Sheet Size:	@A4
Projection:	GDA 1994 MGA Zone 56

- Legend**
- Shaft Locations
 - Crossover Cavern

- Exceedances**
- No Exceedance
 - Exceedance

Jacobs Group (Australia) Pty Limited
Sydney Metro Chatswood to Sydenham
Cosmetic Damage Vibration Assessment
Exceedance of Screening Criteria
Martin Place



SLR
 2 LINCOLN STREET
 LANE COVE
 NSW 2066
 AUSTRALIA
 T: +61 2 9427 8100
 F: +61 2 0801
 www.slrconsulting.com

The content contained within this document may be based on third party data.
 SLR Consulting Australia Pty Ltd does not guarantee the accuracy of such information.

Project No.:	610.14718
Date:	8/9/2016
Drawn by:	MS
Scale:	1:4,000
Sheet Size:	@A4
Projection:	GDA 1994 MGA Zone 56

Legend

	Shaft Locations
	Crossover Cavern

Exceedances

	No Exceedance
	Exceedance

Jacobs Group (Australia) Pty Limited
 Sydney Metro Chatswood to Sydenham
 Cosmetic Damage Vibration Assessment
 Exceedance of Screening Criteria
 Pitt Street

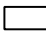


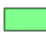



 2 LINCOLN STREET
 LANE COVE
 NSW 2066
 AUSTRALIA
 T: +61 2 9427 8100
 F: +61 2 0801
 www.slrconsulting.com


The content contained within this document may be based on third party data.
 SLR Consulting Australia Pty Ltd does not guarantee the accuracy of such information.

Project No.:	610.14718
Date:	7/7/2016
Drawn by:	MS
Scale:	1:5,000
Sheet Size:	@A4
Projection:	GDA 1994 MGA Zone 56

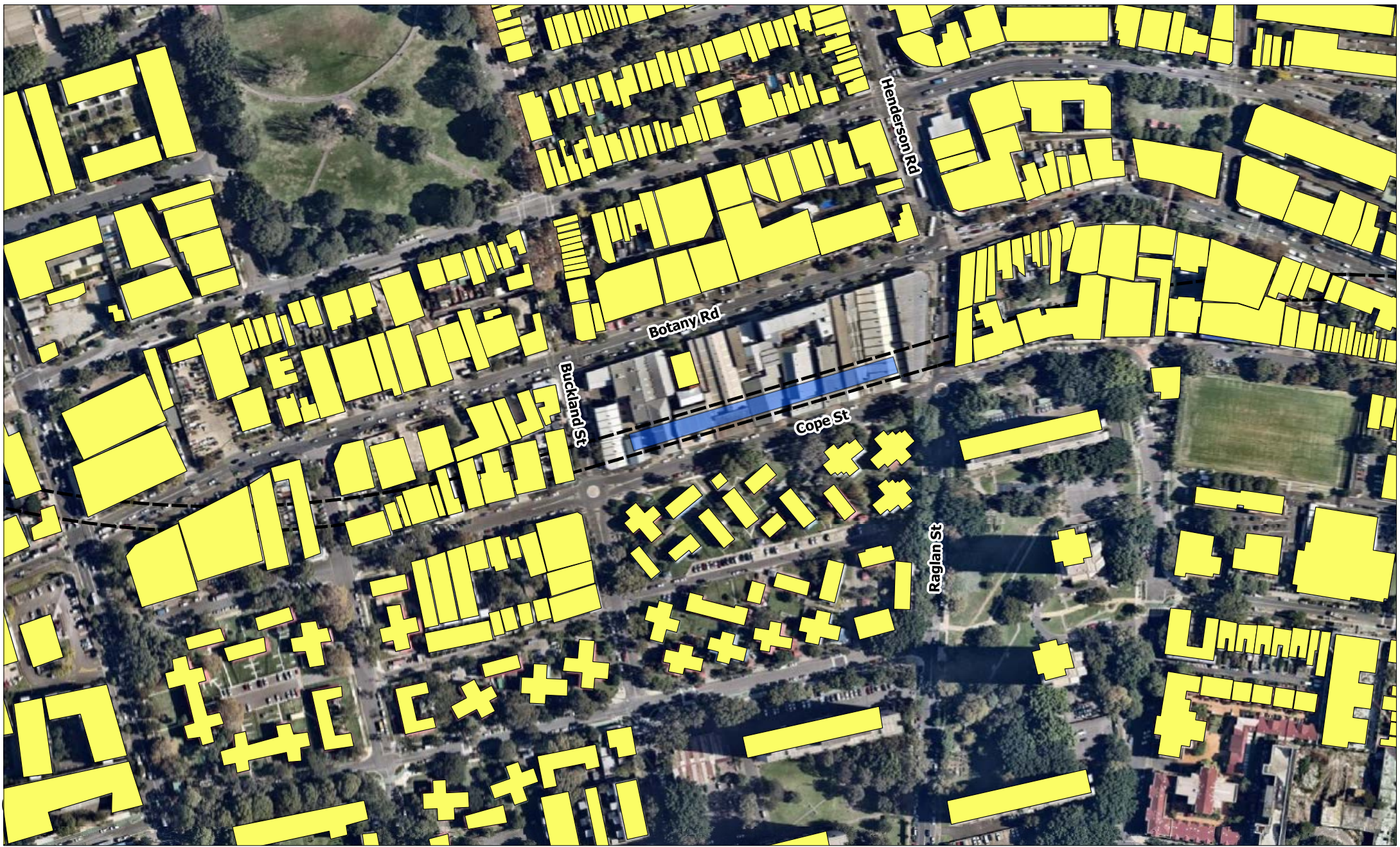
Legend

	One Storey Receiver
	>One Storey Receiver
	Shaft Locations
	Crossover Cavern

Exceedances

	No Exceedance
	Exceedance

Jacobs Group (Australia) Pty Limited
 Sydney Metro Chatswood to Sydenham
Cosmetic Damage Vibration Assessment
Exceedance of Screening Criteria
Central Station



2 LINCOLN STREET
 LANE COVE
 NSW 2066
 AUSTRALIA
 T: +61 2 9427 8100
 F: +61 2 0801
 www.slrconsulting.com

Project No.:	610.14718
Date:	8/9/2016
Drawn by:	MS
Scale:	1:4,000
Sheet Size:	@A4
Projection:	GDA 1994 MGA Zone 56

Legend

- Shaft Locations
- Crossover Cavern

Exceedances

- No Exceedance
- Exceedance

The content contained within this document may be based on third party data.
 SLR Consulting Australia Pty Ltd does not guarantee the accuracy of such information.

Jacobs Group (Australia) Pty Limited

Sydney Metro Chatswood to Sydenham
Cosmetic Damage Vibration Assessment
Exceedance of Screening Criteria
Waterloo