



SLR61014718_GBN_011

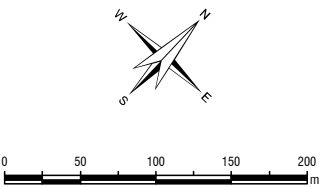
SLR61014718_GBN_013

Note:
 Noise levels on this map refers to maximum ground-borne noise levels from underground rail operation on the ground floor. Ground-borne noise levels will be reduced for higher floor levels.



The content contained within this document may be based on third party data. SLR Consulting Australia Pty Ltd does not guarantee the accuracy of such information.

Project No.:	610.14718
Date:	01-Jul-2016
Drawn by:	AB
Scale:	1:5,000
Sheet Size:	A4
Projection:	GDA 1994 MGA Zone 56



LEGEND

	Standard Attenuation Rail		21 - 25		41 - 45
	High Attenuation Rail		26 - 30		46 - 50
	Very High Attenuation Rail		31 - 35		51 - 55
	Stations		36 - 40		56 - 60
	Portal Structure		≤15		
			16 - 20		

Jacobs Group (Australia) Pty Limited
Sydney Metro Chatswood to Sydenham
Operation
Commercial Ground-borne Noise Levels
 Page 2 of 10
 FIGURE: SLR61014718_GBN_012

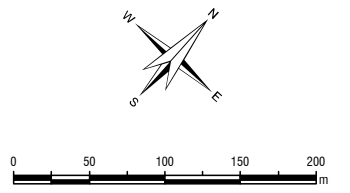


Note:
 Noise levels on this map refers to maximum ground-borne noise levels from underground rail operation on the ground floor. Ground-borne noise levels will be reduced for higher floor levels.

H:\Projects\SLR675-PER\610-SYD\610_14718\SLR61014718_GBN_021 to 030_OP_COM_RD.mxd



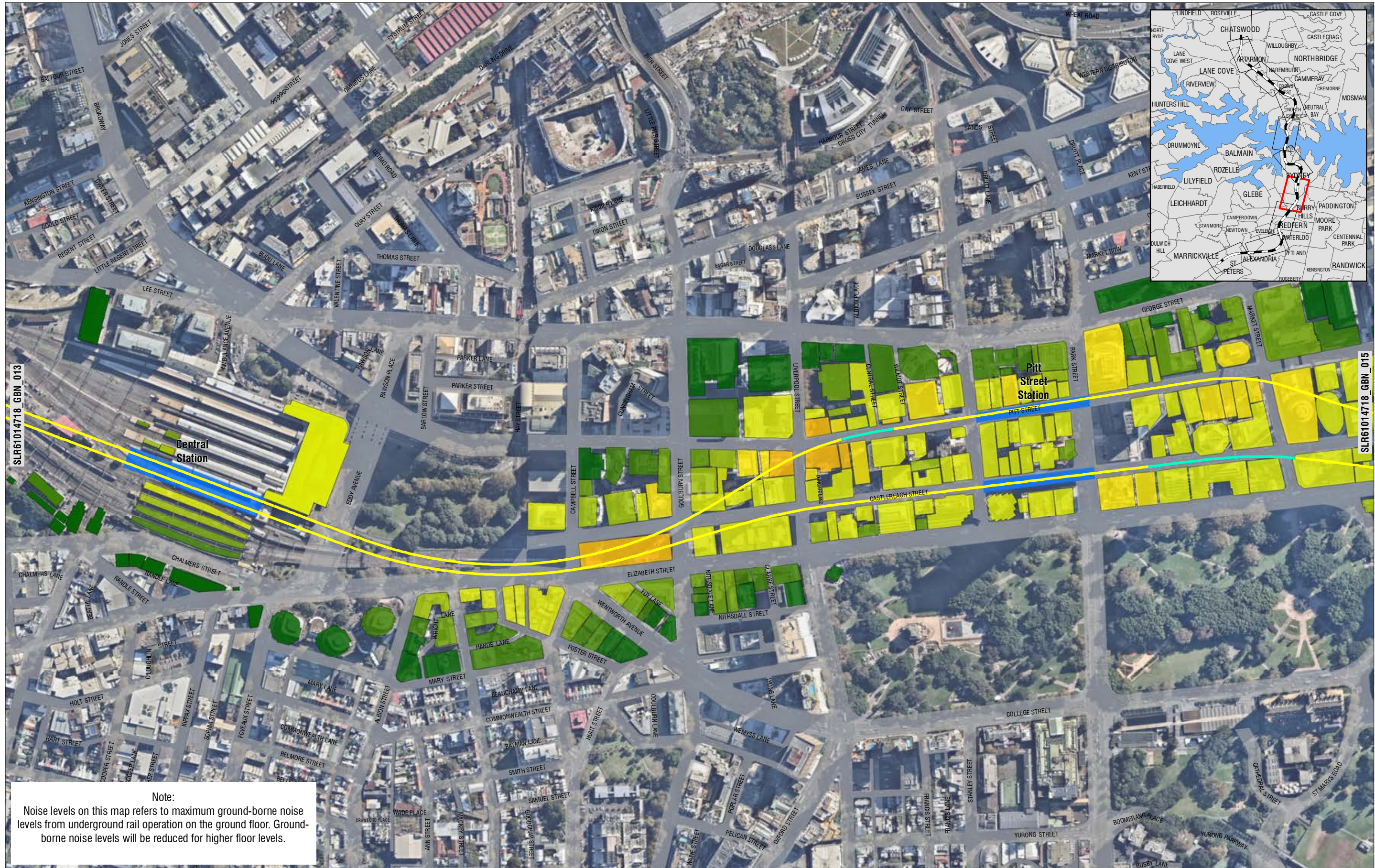
Project No.: 610.14718
 Date: 01-Jul-2016
 Drawn by: AB
 Scale: 1:5,000
 Sheet Size: A4
 Projection: GDA 1994 MGA Zone 56



LEGEND

	Standard Attenuation Rail		Ground-borne Noise Level (dBA) ≤15		41 - 45
	High Attenuation Rail		16 - 20		46 - 50
	Very High Attenuation Rail		21 - 25		51 - 55
	Stations		26 - 30		56 - 60
	Portal Structure		31 - 35		

Jacobs Group (Australia) Pty Limited
Sydney Metro Chatswood to Sydenham
Operation
Commercial Ground-borne Noise Levels
 Page 3 of 10
 FIGURE: SLR61014718_GBN_013



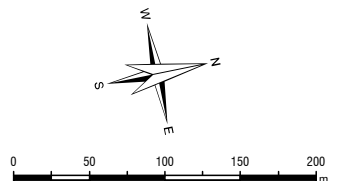
Note:
 Noise levels on this map refers to maximum ground-borne noise levels from underground rail operation on the ground floor. Ground-borne noise levels will be reduced for higher floor levels.

H:\Projects\SLR675-PER\610-SYD\610_14718\SLR61014718_GBN_021 to 030_OP_COM_RD.mxd



The content contained within this document may be based on third party data. SLR Consulting Australia Pty Ltd does not guarantee the accuracy of such information.

Project No.:	610.14718
Date:	01-Jul-2016
Drawn by:	AB
Scale:	1:5,000
Sheet Size:	A4
Projection:	GDA 1994 MGA Zone 56



LEGEND

	Standard Attenuation Rail	Ground-borne Noise Level (dBA)		21 - 25		41 - 45
	High Attenuation Rail		≤15			46 - 50
	Very High Attenuation Rail		16 - 20			51 - 55
	Stations		36 - 40			56 - 60
	Portal Structure					

Jacobs Group (Australia) Pty Limited
Sydney Metro Chatswood to Sydenham
Operation
Commercial Ground-borne Noise Levels
 Page 4 of 10
 FIGURE: SLR61014718_GBN_014



SLR61014718_GBN_014

SLR61014718_GBN_016

Note:
 Noise levels on this map refers to maximum ground-borne noise levels from underground rail operation on the ground floor. Ground-borne noise levels will be reduced for higher floor levels.

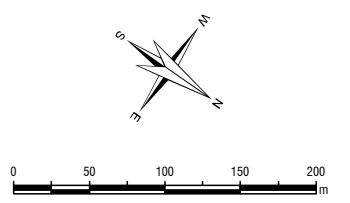
H:\Projects\SLR675-PER\610-SYD\610_14718\SLR61014718_GBN_021 to 030_OP_COM_RD.mxd



2 LINCOLN STREET
 LANE COVE
 NEW SOUTH WALES 2066
 AUSTRALIA
 T: 61 2 9427 8100
 F: 61 2 9427 8200
 www.slrconsulting.com

The content contained within this document may be based on third party data. SLR Consulting Australia Pty Ltd does not guarantee the accuracy of such information.

Project No.:	610.14718
Date:	01-Jul-2016
Drawn by:	AB
Scale:	1:5,000
Sheet Size:	A4
Projection:	GDA 1994 MGA Zone 56



LEGEND

	Standard Attenuation Rail	Ground-borne Noise Level (dBA)		21 - 25		41 - 45
	High Attenuation Rail			26 - 30		46 - 50
	Very High Attenuation Rail			31 - 35		51 - 55
	Stations			36 - 40		56 - 60
	Portal Structure			≤15		
				16 - 20		

Jacobs Group (Australia) Pty Limited

Sydney Metro Chatswood to Sydenham

Operation

Commercial Ground-borne Noise Levels

Page 5 of 10

FIGURE: SLR61014718_GBN_015



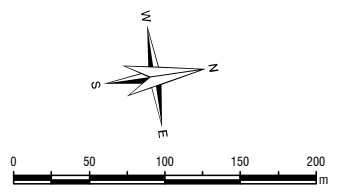
Note:
 Noise levels on this map refers to maximum ground-borne noise levels from underground rail operation on the ground floor. Ground-borne noise levels will be reduced for higher floor levels.

H:\Projects\SLR61014718\PER\61014718\SLR61014718_GBN_021 to 030_OP_COM_RD.mxd



The content contained within this document may be based on third party data. SLR Consulting Australia Pty Ltd does not guarantee the accuracy of such information.

Project No.:	610.14718
Date:	01-Jul-2016
Drawn by:	AB
Scale:	1:5,000
Sheet Size:	A4
Projection:	GDA 1994 MGA Zone 56



LEGEND

	Standard Attenuation Rail		Ground-borne Noise Level (dBA)		21 - 25		41 - 45
	High Attenuation Rail		≤15		26 - 30		46 - 50
	Very High Attenuation Rail		16 - 20		31 - 35		51 - 55
	Stations				36 - 40		56 - 60
	Portal Structure						

Jacobs Group (Australia) Pty Limited
Sydney Metro Chatswood to Sydenham
Operation
Commercial Ground-borne Noise Levels
 Page 6 of 10
 FIGURE: SLR61014718_GBN_016



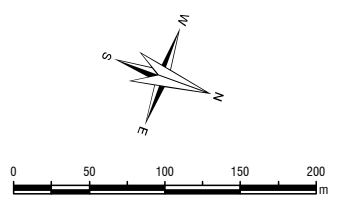
Note:
 Noise levels on this map refers to maximum ground-borne noise levels from underground rail operation on the ground floor. Ground-borne noise levels will be reduced for higher floor levels.

H:\Projects\SLR675-PER\610-SYD\610_14718\SLR61014718_GBN_021 to 030_OP_COM_RD.mxd



The content contained within this document may be based on third party data. SLR Consulting Australia Pty Ltd does not guarantee the accuracy of such information.

Project No.:	610.14718
Date:	01-Jul-2016
Drawn by:	AB
Scale:	1:5,000
Sheet Size:	A4
Projection:	GDA 1994 MGA Zone 56



LEGEND

	Standard Attenuation Rail		21 - 25		41 - 45
	High Attenuation Rail		26 - 30		46 - 50
	Very High Attenuation Rail		31 - 35		51 - 55
	Stations		36 - 40		56 - 60
	Portal Structure		≤15		
			16 - 20		

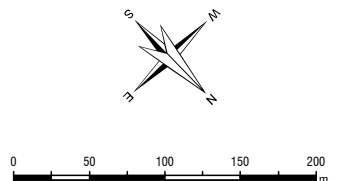
Jacobs Group (Australia) Pty Limited
Sydney Metro Chatswood to Sydenham
Operation
Commercial Ground-borne Noise Levels
 Page 7 of 10
 FIGURE: SLR61014718_GBN_017



Note:
 Noise levels on this map refers to maximum ground-borne noise levels from underground rail operation on the ground floor. Ground-borne noise levels will be reduced for higher floor levels.

SLR
 2 LINCOLN STREET
 LANE COVE
 NEW SOUTH WALES 2066
 AUSTRALIA
 T: 61 2 9427 8100
 F: 61 2 9427 8200
 www.slrc consulting.com

Project No.: 610.14718
 Date: 01-Jul-2016
 Drawn by: AB
 Scale: 1:5,000
 Sheet Size: A4
 Projection: GDA 1994 MGA Zone 56

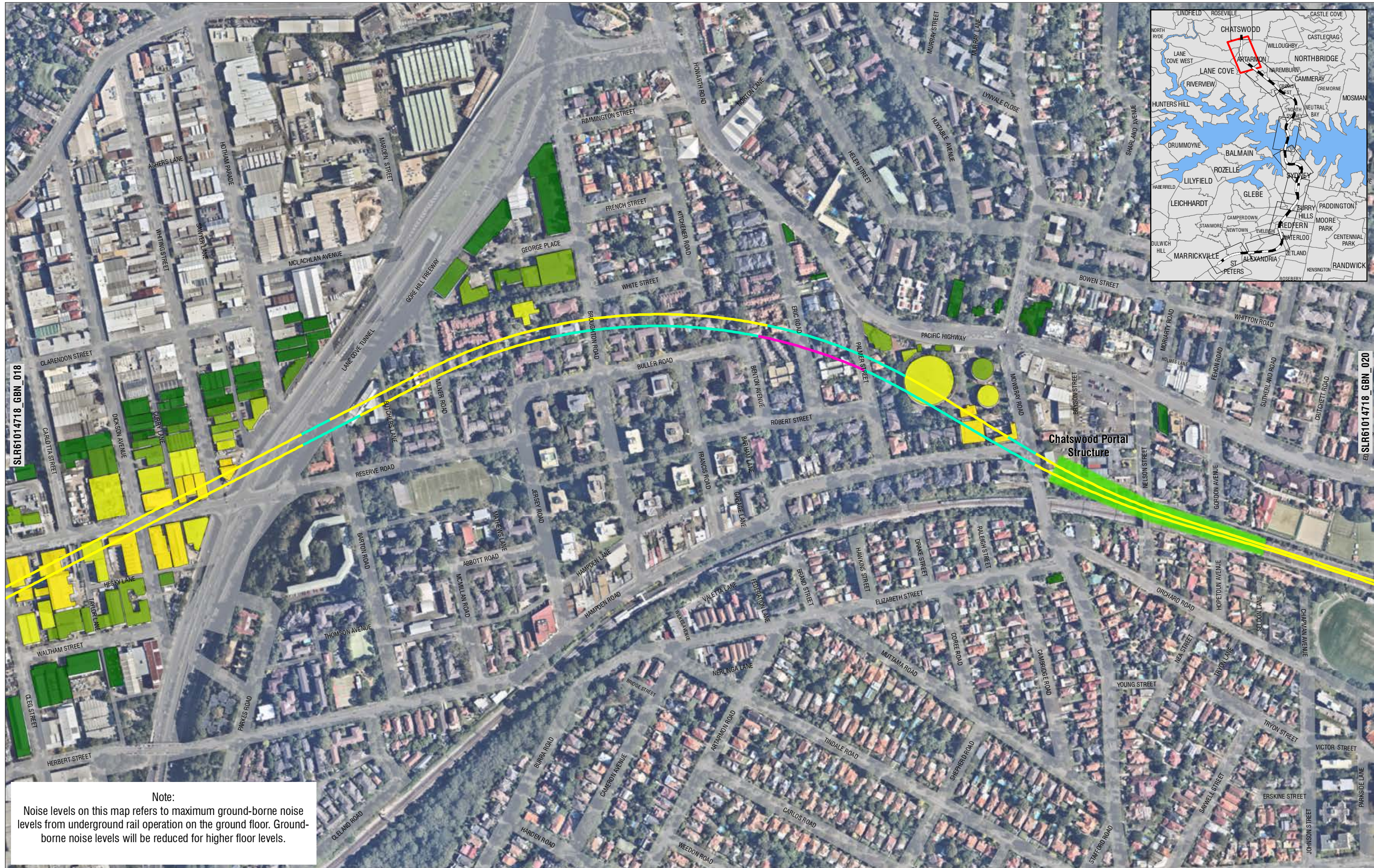


LEGEND

Standard Attenuation Rail	Ground-borne Noise Level (dBA)	21 - 25	41 - 45
High Attenuation Rail	≤15	26 - 30	46 - 50
Very High Attenuation Rail	16 - 20	31 - 35	51 - 55
Stations		36 - 40	56 - 60
Portal Structure			

Jacobs Group (Australia) Pty Limited
Sydney Metro Chatswood to Sydenham
Operation
Commercial Ground-borne Noise Levels
 Page 8 of 10
 FIGURE: SLR61014718_GBN_018

H:\Projects\SLR61014718\PER\610-SYD\610.14718\SLR61014718_GBN_021 to 030_OP_COM_RD.mxd

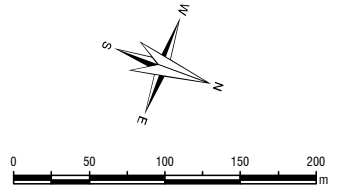


Note:
 Noise levels on this map refers to maximum ground-borne noise levels from underground rail operation on the ground floor. Ground-borne noise levels will be reduced for higher floor levels.

H:\Projects\SLR675-PER\610-SYD\610_14718\SLR61014718_GBN_021 to 030_OP_COM_RD.mxd



Project No.:	610.14718
Date:	01-Jul-2016
Drawn by:	AB
Scale:	1:5,000
Sheet Size:	A4
Projection:	GDA 1994 MGA Zone 56



LEGEND

	Standard Attenuation Rail		Ground-borne Noise Level (dBA)		21 - 25		41 - 45
	High Attenuation Rail		≤15		26 - 30		46 - 50
	Very High Attenuation Rail		16 - 20		31 - 35		51 - 55
	Stations				36 - 40		56 - 60
	Portal Structure						



SLR61014718_GBN_019

**Chatswood
Portal
Structure**

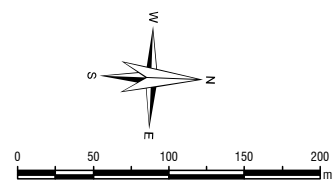
Note:

Noise levels on this map refers to maximum ground-borne noise levels from underground rail operation on the ground floor. Ground-borne noise levels will be reduced for higher floor levels.



2 LINCOLN STREET
LANE COVE
NEW SOUTH WALES 2066
AUSTRALIA
T: 61 2 9427 8100
F: 61 2 9427 8200
www.slrconsulting.com

Project No.: 610.14718
Date: 01-Jul-2016
Drawn by: AB
Scale: 1:5,000
Sheet Size: A4
Projection: GDA 1994 MGA Zone 56



LEGEND

	Standard Attenuation Rail	Ground-borne Noise Level (dBA)		21 - 25		41 - 45
	High Attenuation Rail		≤15			46 - 50
	Very High Attenuation Rail		16 - 20			51 - 55
	Stations		31 - 35			56 - 60
	Portal Structure					

Jacobs Group (Australia) Pty Limited

Sydney Metro Chatswood to Sydenham

Operation

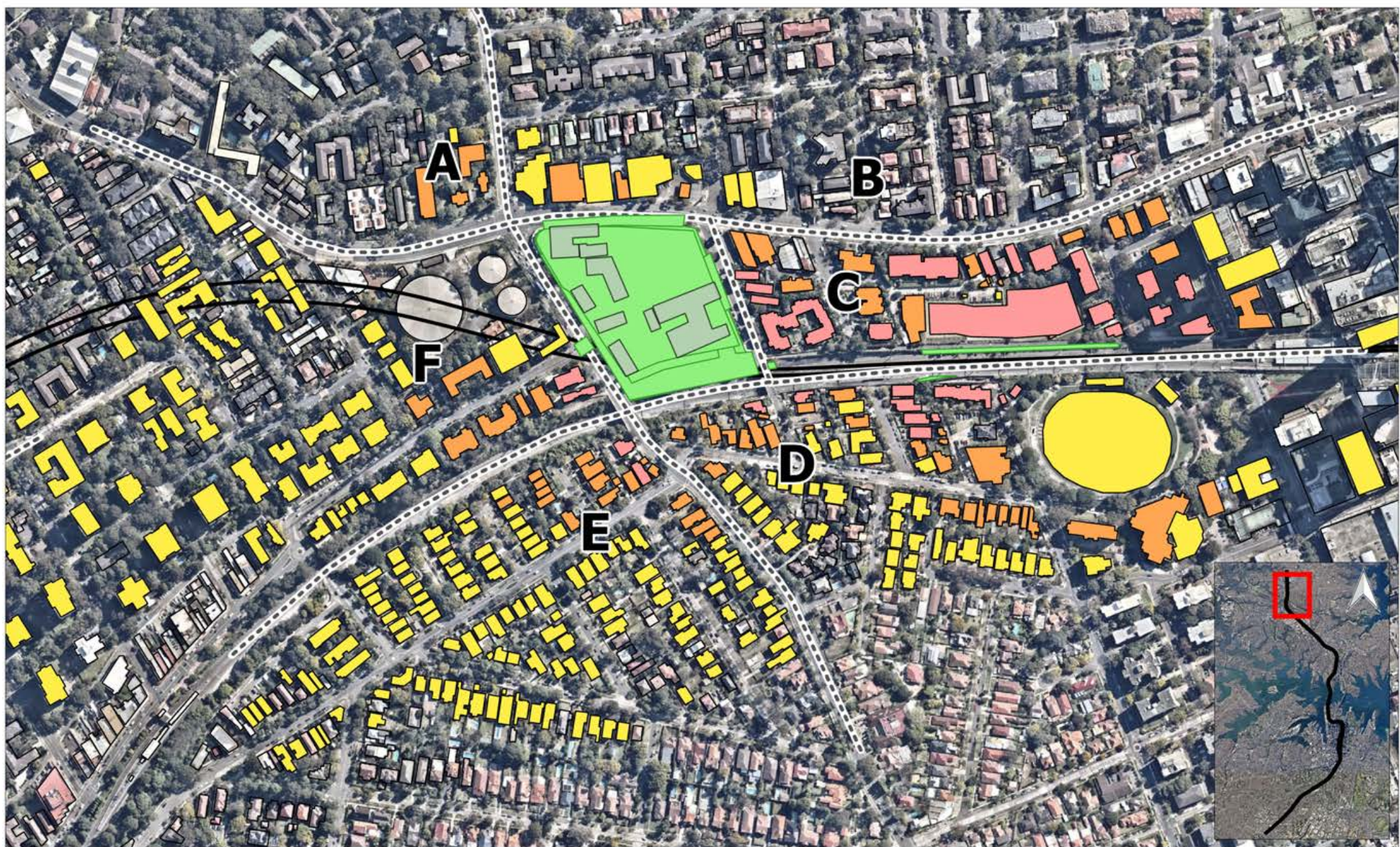
Commercial Ground-borne Noise Levels

Page 10 of 10

FIGURE: SLR61014718_GBN_020

INDEX

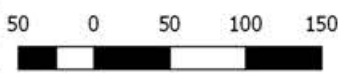
- 1 – Enabling Works
- 2 – Surface Track
- 3 – Earthworks
- 4 – Construction of Acoustic Sheds
- 5 – Tunnelling/Excavation
- 6 – Fitout
- 7 – Construction



SLR 

2 LINCOLN STREET
LAKE COVE
NSW 2066
AUSTRALIA
T: +61 2 9427 8100
F: +61 2 0801
www.slrconsulting.com

Project No.:	610.14718
Date:	08/12/2015
Drawn by:	MR
Scale:	1:5,000
Sheet Size:	@A4
Projection:	GDA 1994 MGA Zone 56



--- Receiver Area Construction Area Acquired Building

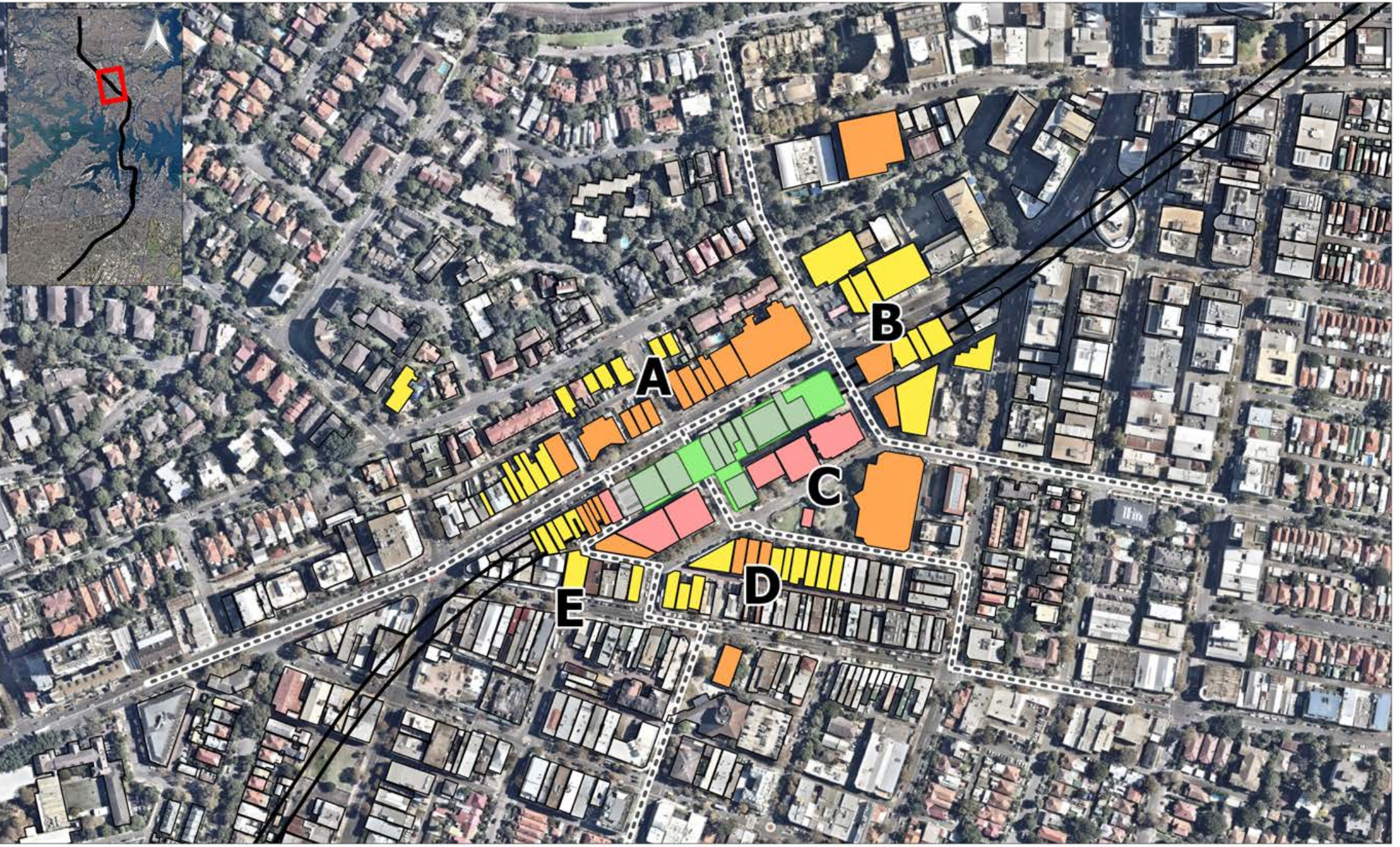
Worst-case Exceedance of NML

0 dB - 10 dB 10 dB - 20 dB > 20 dB

Jacobs Group (Australia) Pty Limited
Sydney Metro Chatswood to Sydenham

**Construction Noise Predictions
Worst-case NML Exceedance
Enabling Works - Daytime**

The content within this document may be based on third party data. SLR Consulting Australia Pty Ltd does not guarantee the accuracy of such information.



2 LINCOLN STREET
LANE COVE
NSW 2066
AUSTRALIA
T: +61 2 9427 8100
F: +61 2 0801
www.slrconsulting.com

Project No.: 610.14718
Date: 08/12/2015
Drawn by: MR
Scale: 1:4,000
Sheet Size: @A4
Projection: GDA 1994 MGA Zone 56



--- Receiver Area Construction Area Acquired Building

Worst-case Exceedance of NML

0 dB - 10 dB 10 dB - 20 dB > 20 dB

Jacobs Group (Australia) Pty Limited
Sydney Metro Chatswood to Sydenham

Construction Noise Predictions
Worst-case NML Exceedance
Enabling Works - Daytime

The content contained within this document may be based on third party data. SLR Consulting Australia Pty Ltd does not guarantee the accuracy of such information.



2 LINCOLN STREET
LAKE COVE
NSW 2066
AUSTRALIA
T: +61 2 9427 8100
F: +61 2 0801
www.slrc consulting.com

Project No.:	610.14718
Date:	08/12/2015
Drawn by:	MR
Scale:	1:4,000
Sheet Size:	@A4
Projection:	GDA 1994 MGA Zone 56



--- Receiver Area Construction Area Acquired Building

Worst-case Exceedance of NML

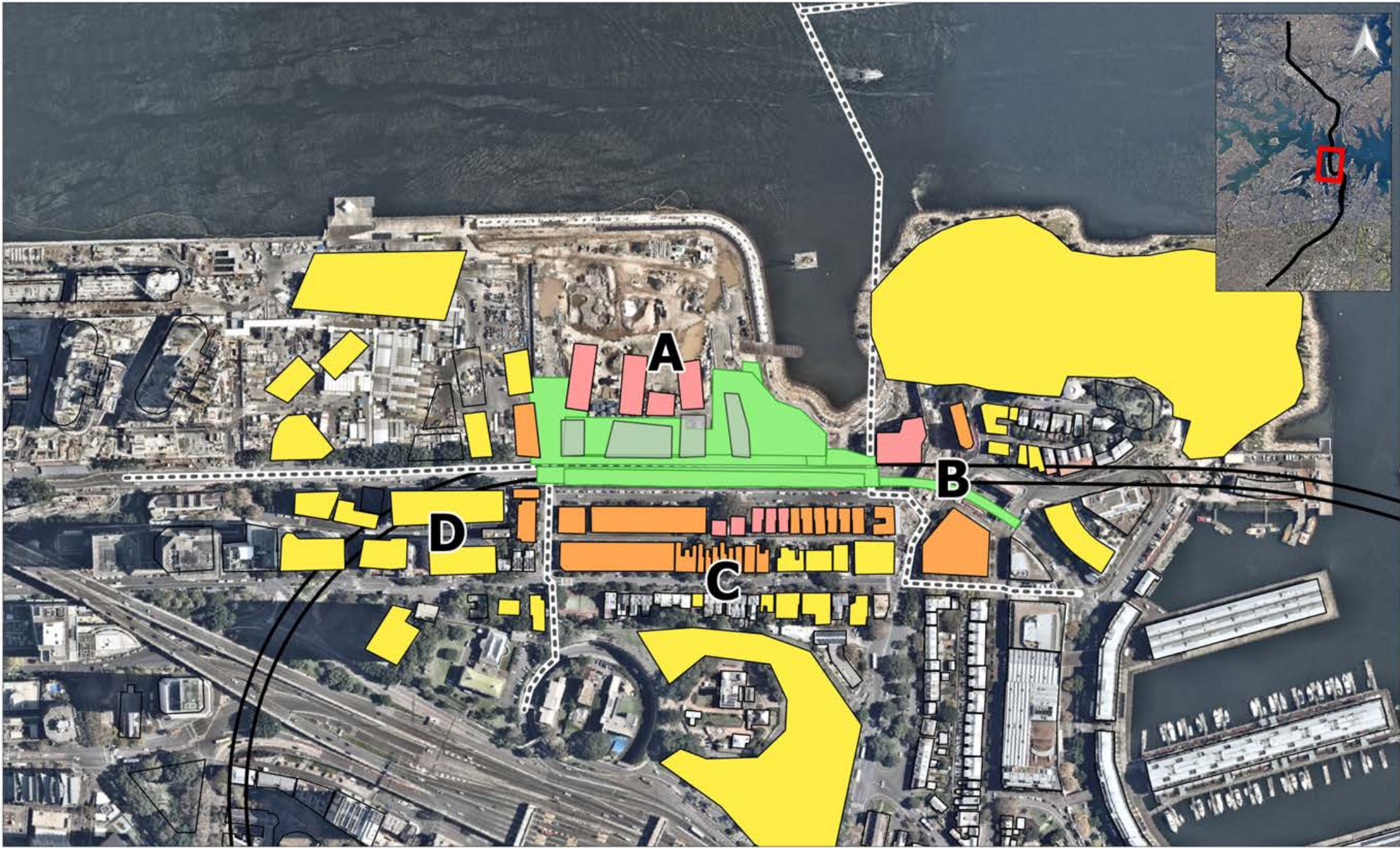
0 dB - 10 dB 10 dB - 20 dB > 20 dB

Jacobs Group (Australia) Pty Limited

Sydney Metro Chatswood to Sydenham

Construction Noise Predictions
Worst-case NML Exceedance
Enabling Works - Daytime

The content contained within this document may be based on third party data. SLR Consulting Australia Pty Ltd does not guarantee the accuracy of such information.



2 LINCOLN STREET
LANE COVE
NSW 2066
AUSTRALIA
T: +61 2 9427 8100
F: +61 2 0801
www.slrconsulting.com

Project No.:	610.14718
Date:	08/12/2015
Drawn by:	MR
Scale:	1:4,000
Sheet Size:	@A4
Projection:	GDA 1994 MGA Zone 56



--- Receiver Area Construction Area Acquired Building

Worst-case Exceedance of NML

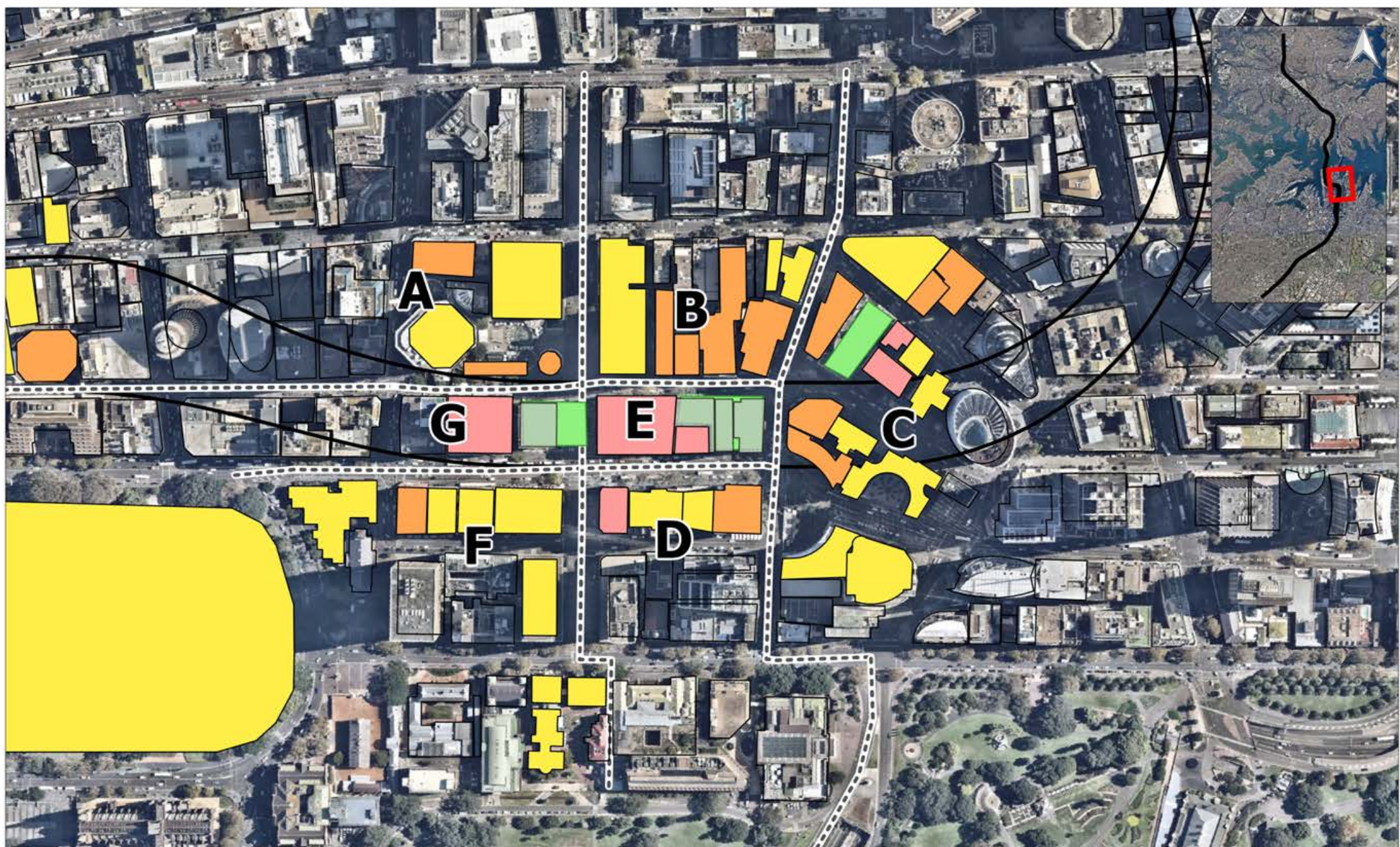
0 dB - 10 dB 10 dB - 20 dB > 20 dB

Jacobs Group (Australia) Pty Limited

Sydney Metro Chatswood to Sydenham

**Construction Noise Predictions
Worst-case NML Exceedance
Enabling Works - Daytime**

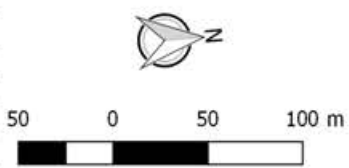
The content contained within this document may be based on third party data. SLR Consulting Australia Pty Ltd does not guarantee the accuracy of such information.





SLR 

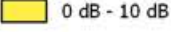
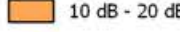
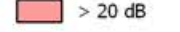
2 LINCOLN STREET
LANE COVE
NSW 2066
AUSTRALIA
T: +61 2 9427 8100
F: +61 2 0801
www.slrconsulting.com

Project No.: 610.14718
Date: 08/12/2015
Drawn by: MR
Scale: 1:4,000
Sheet Size: @A4
Projection: GDA 1994 MGA Zone 56



--- Receiver Area  Construction Area  Acquired Building

Worst-case Exceedance of NML

 0 dB - 10 dB  10 dB - 20 dB  > 20 dB

Jacobs Group (Australia) Pty Limited
Sydney Metro Chatswood to Sydenham
Construction Noise Predictions
Worst-case NML Exceedance
Enabling Works - Daytime

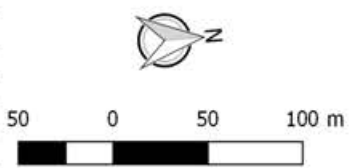
The content within this document may be based on third party data.
SLR Consulting Australia Pty Ltd does not guarantee the accuracy of such information.





SLR 

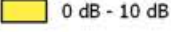
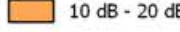
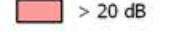
2 LINCOLN STREET
LANE COVE
NSW 2066
AUSTRALIA
T: +61 2 9427 8100
F: +61 2 0801
www.slrc consulting.com

Project No.: 610.14718
Date: 08/12/2015
Drawn by: MR
Scale: 1:4,000
Sheet Size: @A4
Projection: GDA 1994 MGA Zone 56



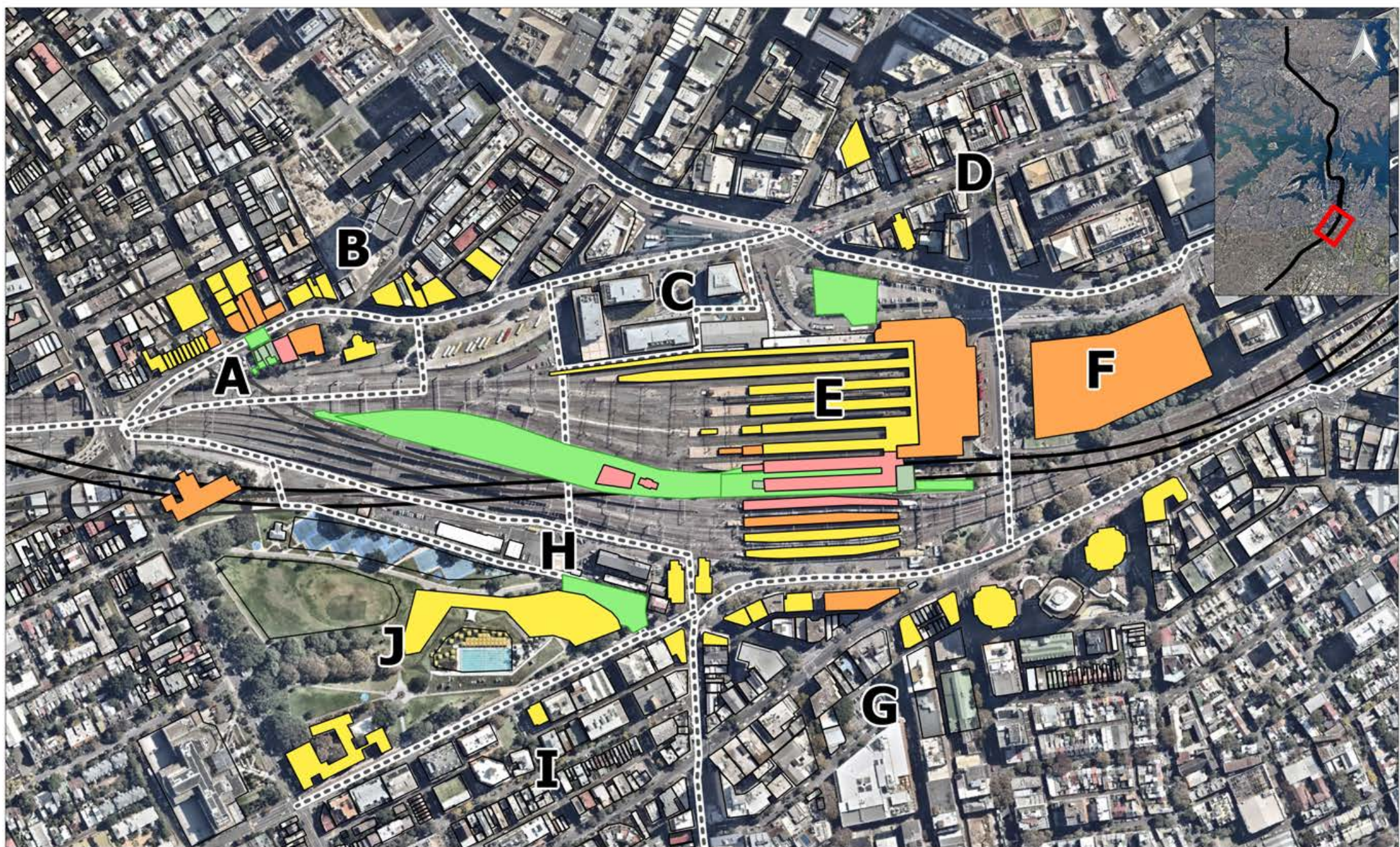
--- Receiver Area  Construction Area  Acquired Building

Worst-case Exceedance of NML

 0 dB - 10 dB  10 dB - 20 dB  > 20 dB

Jacobs Group (Australia) Pty Limited
Sydney Metro Chatswood to Sydenham
Construction Noise Predictions
Worst-case NML Exceedance
Enabling Works - Daytime

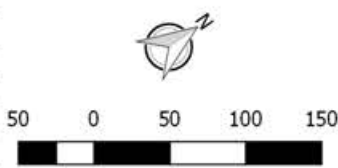
The content contained within this document may be based on third party data. SLR Consulting Australia Pty Ltd does not guarantee the accuracy of such information.





SLR 

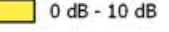
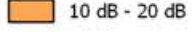

2 LINCOLN STREET
LANE COVE
NSW 2066
AUSTRALIA
T: +61 2 9427 8100
F: +61 2 0801
www.slrconsulting.com

Project No.: 610.14718
Date: 08/12/2015
Drawn by: MR
Scale: 1:5,000
Sheet Size: @A4
Projection: GDA 1994 MGA Zone 56



--- Receiver Area  Construction Area  Acquired Building

Worst-case Exceedance of NML

 0 dB - 10 dB  10 dB - 20 dB  > 20 dB

Jacobs Group (Australia) Pty Limited
Sydney Metro Chatswood to Sydenham
Construction Noise Predictions
Worst-case NML Exceedance
Enabling Works - Daytime

The content contained within this document may be based on third party data. SLR Consulting Australia Pty Ltd does not guarantee the accuracy of such information.



2 LINCOLN STREET
 LANE COVE
 NSW 2066
 AUSTRALIA
 T: +61 2 9427 8100
 F: +61 2 0801
 www.slrconsulting.com

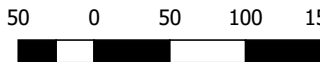
Project No.: 610.14718
 Date: 08/12/2015
 Drawn by: MR
 Scale: 1:5,000
 Sheet Size: @A4
 Projection: GDA 1994 MGA Zone 56



- - - Receiver Area Construction Area Acquired Building

Worst-case Exceedance of NML

0 dB - 10 dB 10 dB - 20 dB > 20 dB

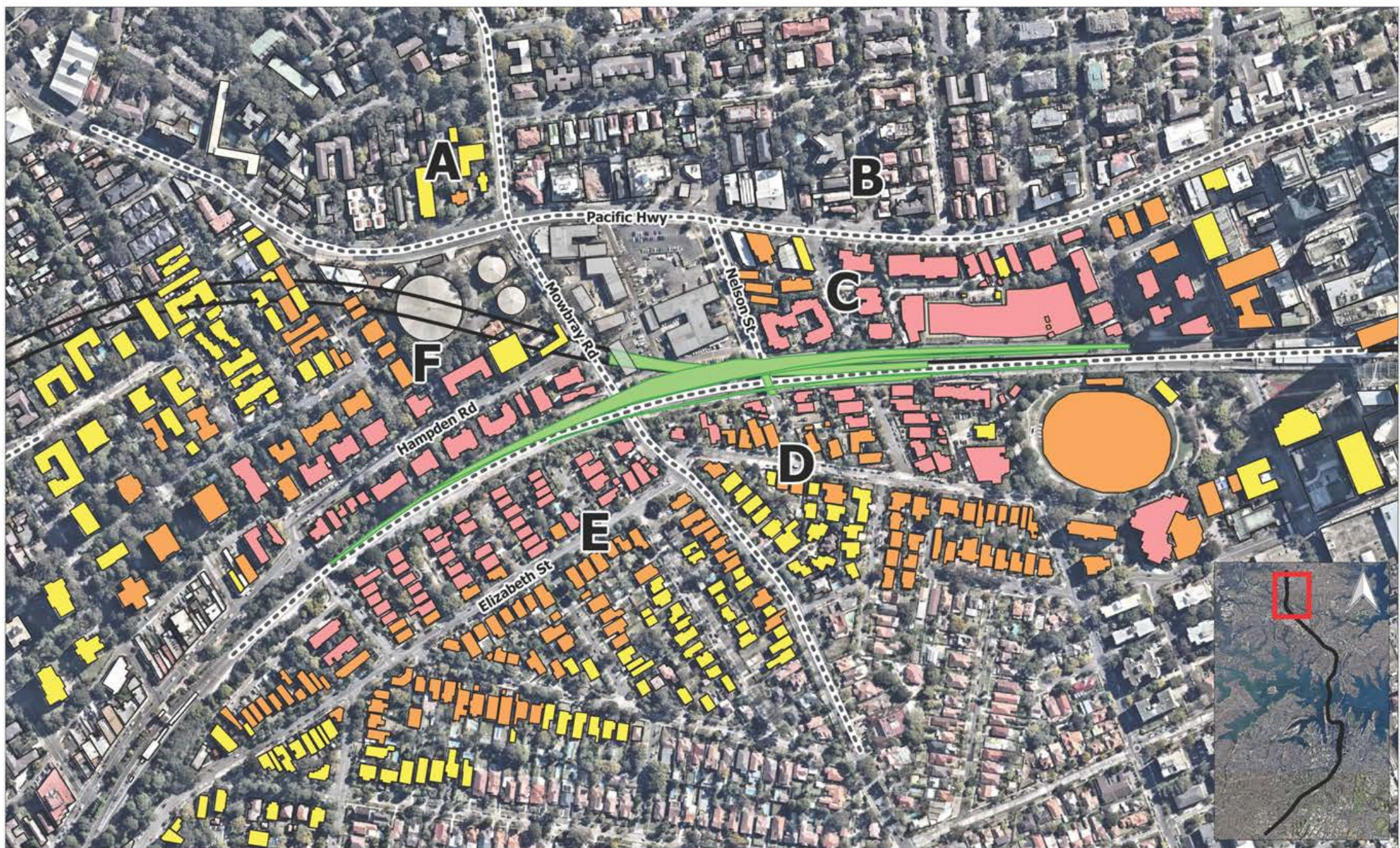


Jacobs Group (Australia) Pty Limited

Sydney Metro Chatswood to Sydenham

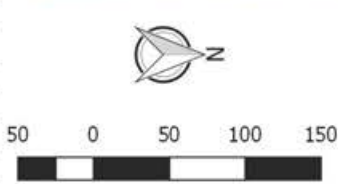
**Construction Noise Predictions
 Worst-case NML Exceedance
 Enabling Works - Daytime**

The content contained within this document may be based on third party data. SLR Consulting Australia Pty Ltd does not guarantee the accuracy of such information.



SLR
 2 LINCOLN STREET
 LANE COVE
 NSW 2066
 AUSTRALIA
 T: +61 2 9427 6100
 F: +61 2 0801
 www.slronline.com

Project No.: 510.14718
 Date: 13/4/2016
 Drawn by: MS
 Scale: 1:5,000
 Sheet Size: @A4
 Projection: GDA 1994 MGA Zone 56



--- Receiver Area Construction Area Acquired Building

Worst-case Exceedance of NML

0 dB - 10 dB 10 dB - 20 dB > 20 dB

Jacobs Group (Australia) Pty Limited
 Sydney Metro Chatswood to Sydenham

Construction Noise Predictions
 Worst-case NML Exceedance
 Surface Track Works - Daytime



The content within this document may be based on third party data. SLR Consulting Australia Pty Ltd does not guarantee the accuracy of such information.



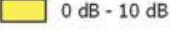
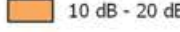

SLR  2 LINCOLN STREET
LANE COVE
NSW 2056
AUSTRALIA
T: +61 2 9427 6100
F: +61 2 0801
www.slronline.com

Project No.: 510.14718
Date: 13/4/2016
Drawn by: MS
Scale: 1:5,000
Sheet Size: @A4
Projection: GDA 1994 MGA Zone 56



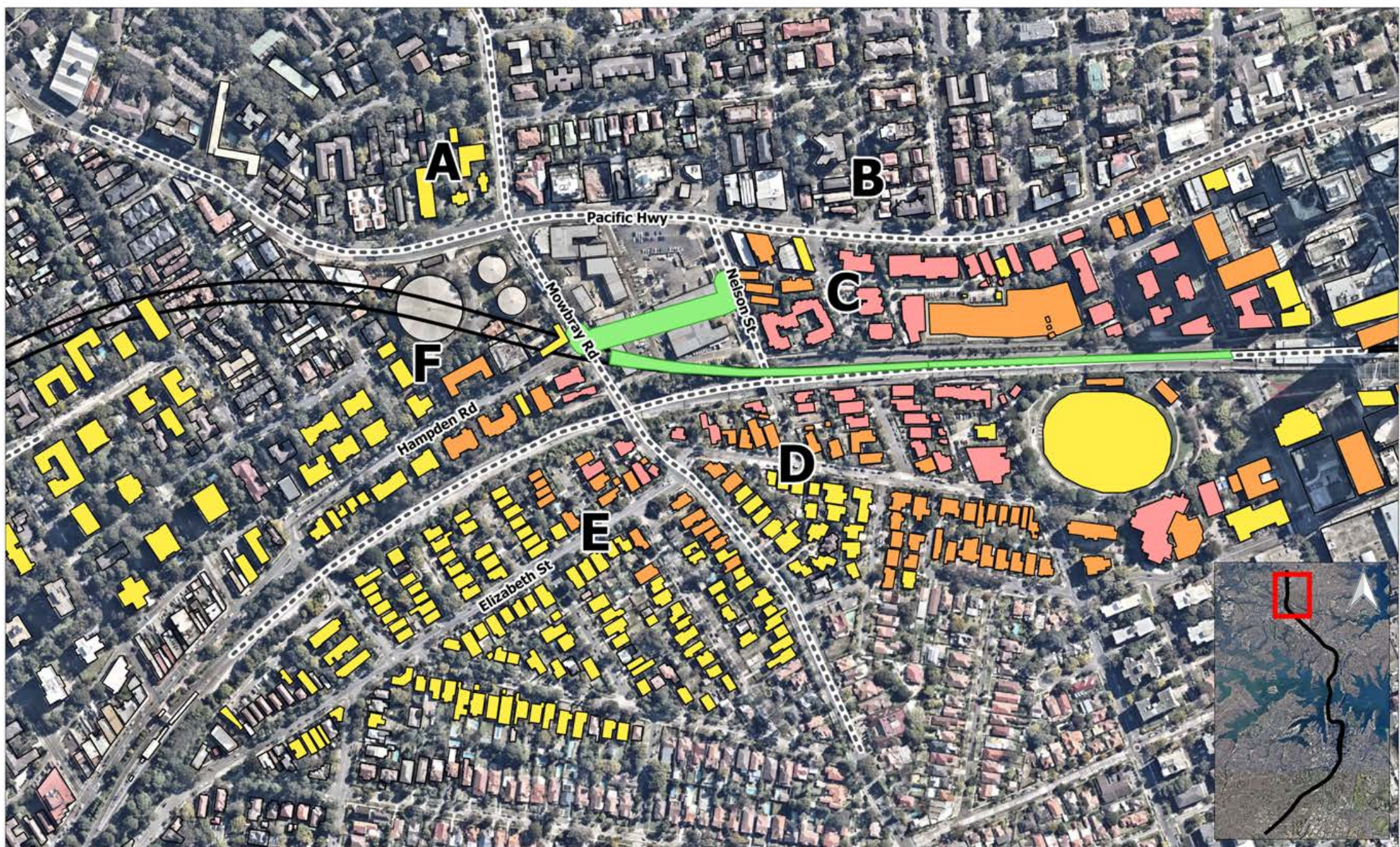
--- Receiver Area  Construction Area  Acquired Building

Worst-case Exceedance of NML

 0 dB - 10 dB  10 dB - 20 dB  > 20 dB

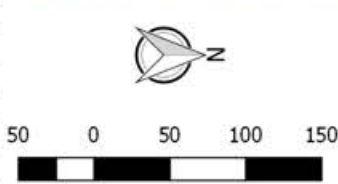
Jacobs Group (Australia) Pty Limited
Sydney Metro Chatswood to Sydenham
Construction Noise Predictions
Worst-case NML Exceedance
Surface Track Works - Daytime

The content contained within this document may be based on third party data. SLR Consulting Australia Pty Ltd does not guarantee the accuracy of such information.



SLR
 2 LINCOLN STREET
 LAKE COVE
 NSW 2066
 AUSTRALIA
 T: +61 2 9427 8100
 F: +61 2 0801
 www.slrconsulting.com

Project No.: 610.14718
 Date: 08/12/2015
 Drawn by: IMR
 Scale: 1:5,000
 Sheet Size: @A4
 Projection: GDA 1994 MGA Zone 56



--- Receiver Area Construction Area Acquired Building

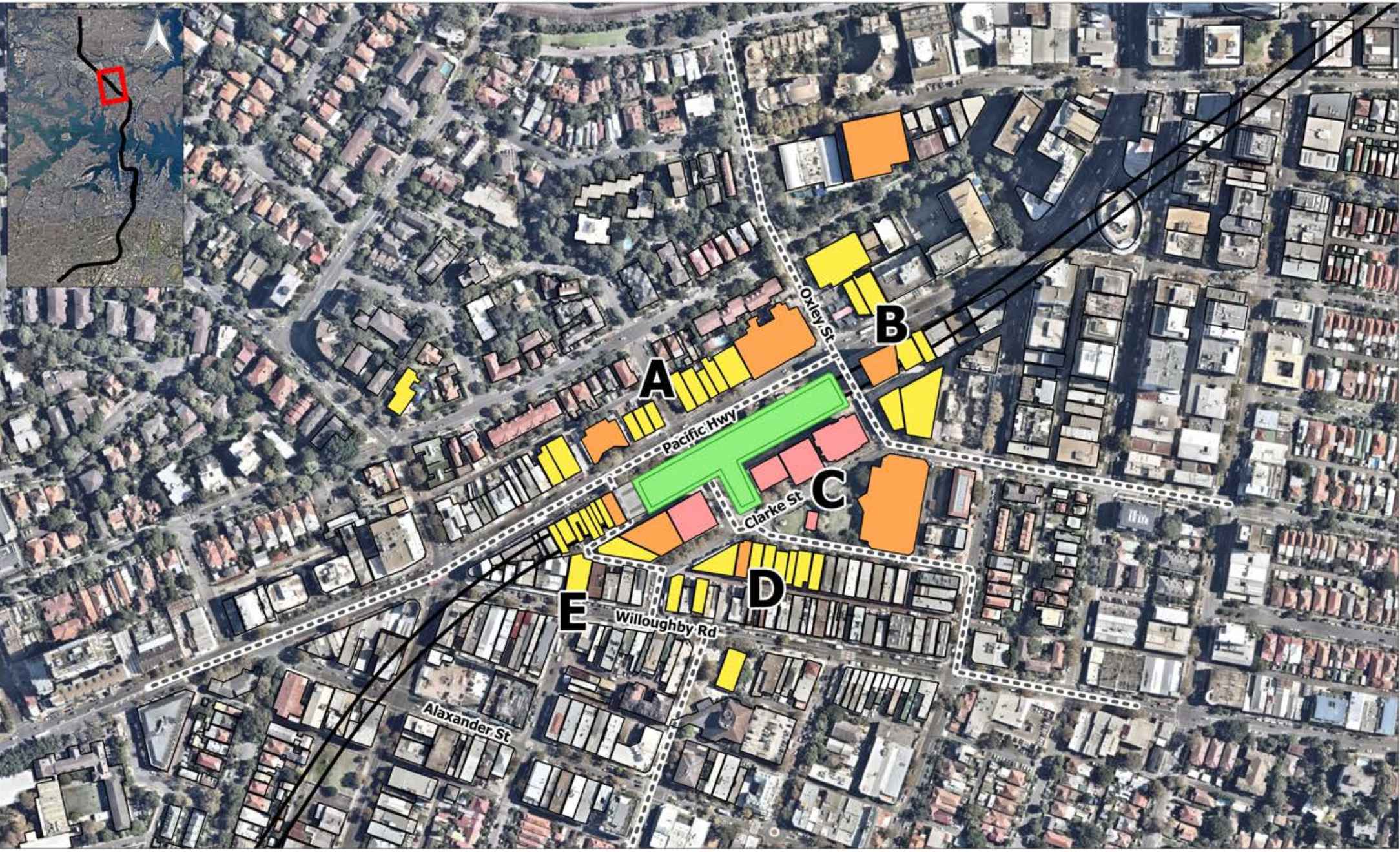
Worst-case Exceedance of NML

0 dB - 10 dB 10 dB - 20 dB > 20 dB

Jacobs Group (Australia) Pty Limited
 Sydney Metro Chatswood to Sydenham

**Construction Noise Predictions
 Worst-case NML Exceedance
 Earthworks - Daytime**

The content contained within this document may be based on third party data. SLR Consulting Australia Pty Ltd does not guarantee the accuracy of such information.



2 LINCOLN STREET
LANE COVE
NSW 2066
AUSTRALIA
T: +61 2 9427 8100
F: +61 2 0801
www.slrconsulting.com

Project No.: 610.14718
Date: 17/8/2016
Drawn by: MS
Scale: 1:4,000
Sheet Size: @A4
Projection: GDA 1994 MGA Zone 56



--- Receiver Area Construction Area Acquired Building

Worst-case Exceedance of NML

0 dB - 10 dB 10 dB - 20 dB > 20 dB

Jacobs Group (Australia) Pty Limited
Sydney Metro Chatswood to Sydenham

Construction Noise Predictions
Worst-case NML Exceedance
Earthworks - Daytime

The content contained within this document may be based on third party data. SLR Consulting Australia Pty Ltd does not guarantee the accuracy of such information.



2 LINCOLN STREET
LANE COVE
NSW 2066
AUSTRALIA
T: +61 2 9427 8100
F: +61 2 0801
www.slrconsulting.com

Project No.: 610.14718
Date: 08/12/2015
Drawn by: MR
Scale: 1:4,000
Sheet Size: @A4
Projection: GDA 1994 MGA Zone 56



50 0 50 100 m

--- Receiver Area Construction Area Acquired Building

Worst-case Exceedance of NML

0 dB - 10 dB 10 dB - 20 dB > 20 dB

Jacobs Group (Australia) Pty Limited

Sydney Metro Chatswood to Sydenham

Construction Noise Predictions
Worst-case NML Exceedance
Earthworks - Daytime

The content contained within this document may be based on third party data. SLR Consulting Australia Pty Ltd does not guarantee the accuracy of such information.



2 LINCOLN STREET
LANE COVE
NSW 2066
AUSTRALIA
T: +61 2 9427 8100
F: +61 2 0801
www.slrconsulting.com

Project No.:	610.14718
Date:	08/12/2015
Drawn by:	MR
Scale:	1:4,000
Sheet Size:	@A4
Projection:	GDA 1994 MGA Zone 56



--- Receiver Area Construction Area Acquired Building

Worst-case Exceedance of NML

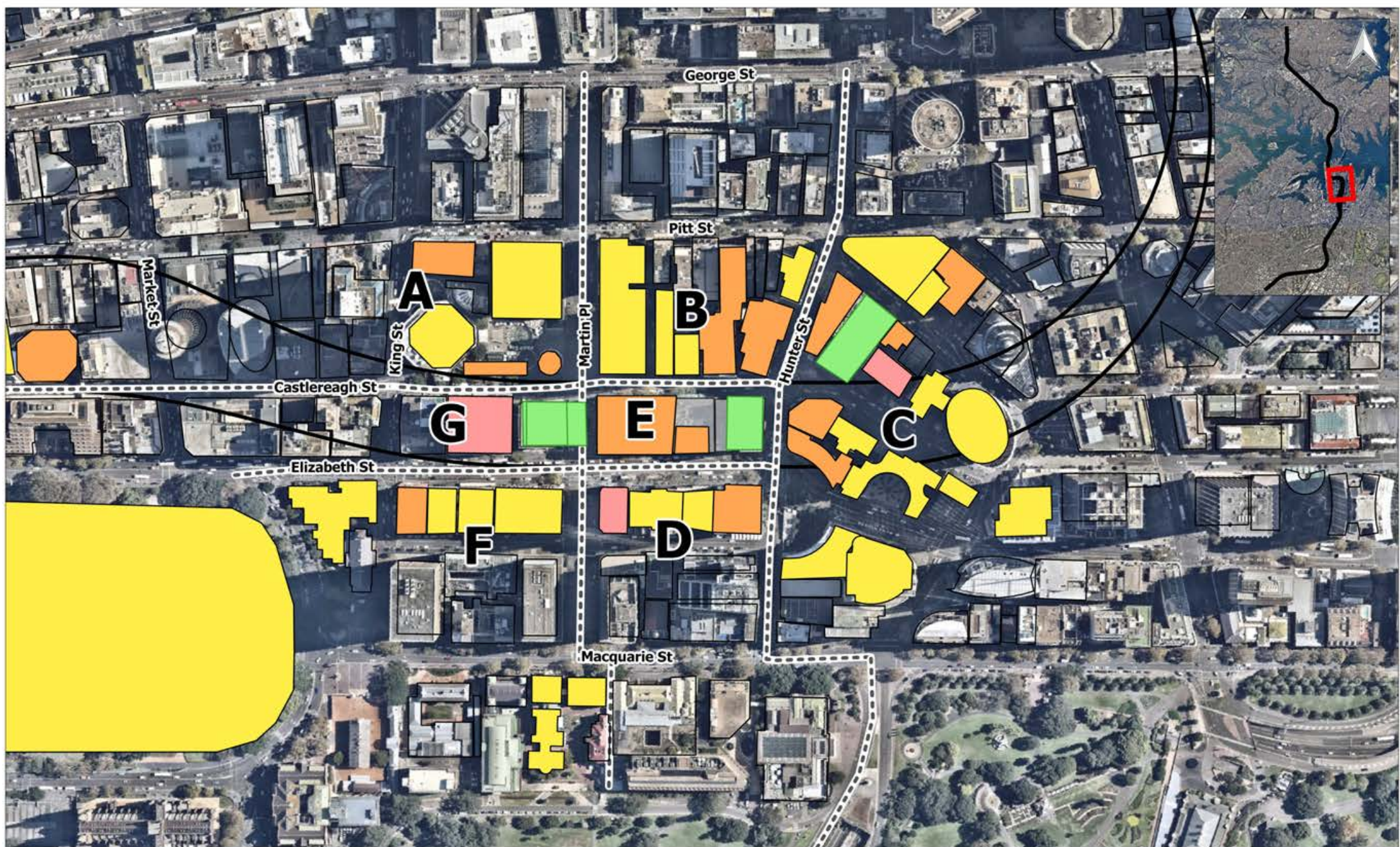
0 dB - 10 dB 10 dB - 20 dB > 20 dB

Jacobs Group (Australia) Pty Limited

Sydney Metro Chatswood to Sydenham

**Construction Noise Predictions
Worst-case NML Exceedance
Earthworks - Daytime**

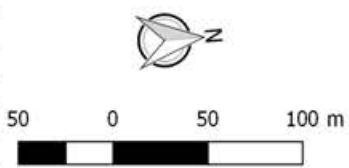
The content contained within this document may be based on third party data. SLR Consulting Australia Pty Ltd does not guarantee the accuracy of such information.





SLR 

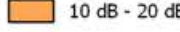
2 LINCOLN STREET
LAKE COVE
NSW 2066
AUSTRALIA
T: +61 2 9427 8100
F: +61 2 0801
www.slrc consulting.com

Project No.:	610.14718
Date:	17/8/2016
Drawn by:	MS
Scale:	1:4,000
Sheet Size:	@A4
Projection:	GDA 1994 MGA Zone 56



--- Receiver Area  Construction Area  Acquired Building

Worst-case Exceedance of NML

 0 dB - 10 dB  10 dB - 20 dB  > 20 dB

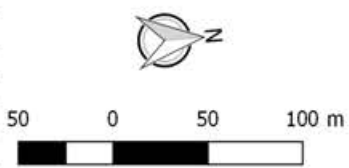
Jacobs Group (Australia) Pty Limited
Sydney Metro Chatswood to Sydenham
 Construction Noise Predictions
 Worst-case NML Exceedance
 Earthworks - Daytime

The content within this document may be based on third party data. SLR Consulting Australia Pty Ltd does not guarantee the accuracy of such information.



SLR
 2 LINCOLN STREET
 LAKE COVE
 NSW 2066
 AUSTRALIA
 T: +61 2 9427 8100
 F: +61 2 0801
 www.slrconsulting.com

Project No.:	610.14718
Date:	7/9/2016
Drawn by:	MS
Scale:	1:4,000
Sheet Size:	@A4
Projection:	GDA 1994 MGA Zone 56



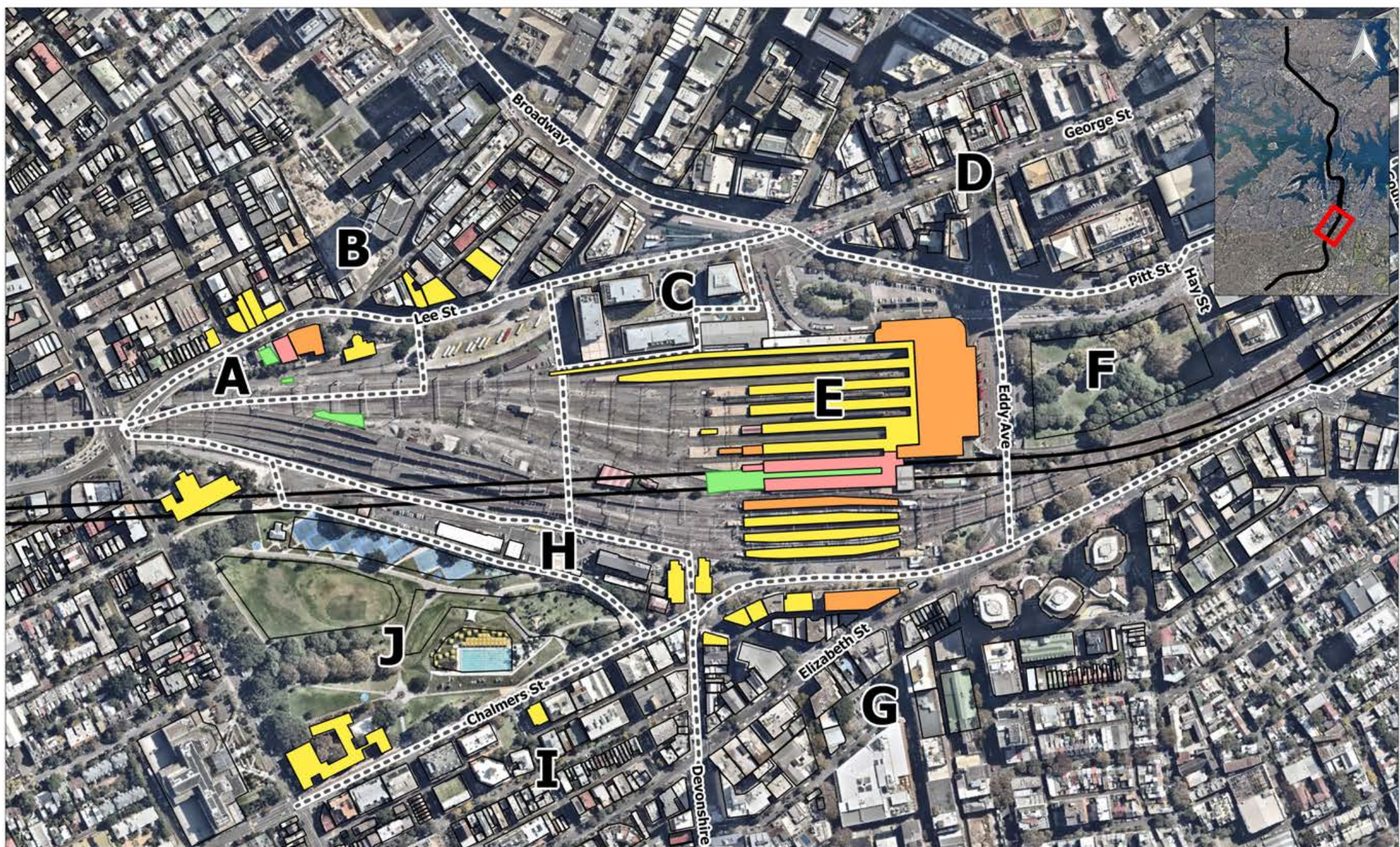
--- Receiver Area ■ Construction Area ■ Acquired Building

Worst-case Exceedance of NML

■ 0 dB - 10 dB ■ 10 dB - 20 dB ■ > 20 dB

Jacobs Group (Australia) Pty Limited
 Sydney Metro Chatswood to Sydenham
 Construction Noise Predictions
 Worst-case NML Exceedance
 Earthworks - Daytime

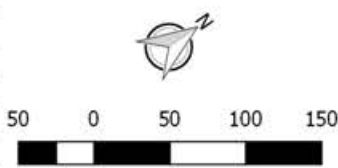
The content contained within this document may be based on third party data. SLR Consulting Australia Pty Ltd does not guarantee the accuracy of such information.




SLR 

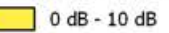
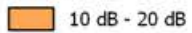
2 LINCOLN STREET
LANE COVE
NSW 2066
AUSTRALIA
T: +61 2 9427 8100
F: +61 2 0801
www.slrconsulting.com

Project No.: 610.14718
Date: 8/9/2016
Drawn by: MS
Scale: 1:5,000
Sheet Size: @A4
Projection: GDA 1994 MGA Zone 56



--- Receiver Area  Construction Area  Acquired Building

Worst-case Exceedance of NML

 0 dB - 10 dB  10 dB - 20 dB  > 20 dB

Jacobs Group (Australia) Pty Limited
Sydney Metro Chatswood to Sydenham

**Construction Noise Predictions
Worst-case NML Exceedance
Earthworks - Daytime**

The content contained within this document may be based on third party data. SLR Consulting Australia Pty Ltd does not guarantee the accuracy of such information.