

Why do we ban the broom?



The problem

Sweeping up construction dust causes respirable crystalline silica (silica dust) to get into the air.

Once in the air, silica dust is able to be breathed in.

Over-exposure to silica dust can cause chronic diseases such as silicosis and lung cancer.

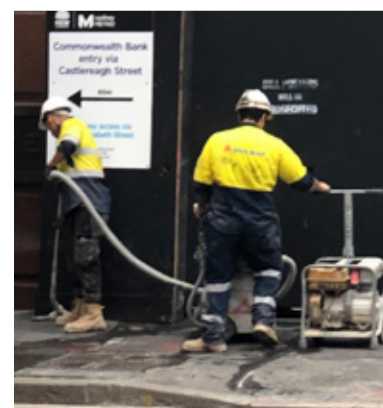
The solution

Replace dry sweeping with:

- HEPA vacuums (Class H)
- wet vacuuming
- wet mopping.



Gernie and wet vacuum.



HEPA vacuuming.



Wet vacuum.