

ARCHITECTURAL DRAWINGS OF POSSIBLE INDICATIVE BUILDING

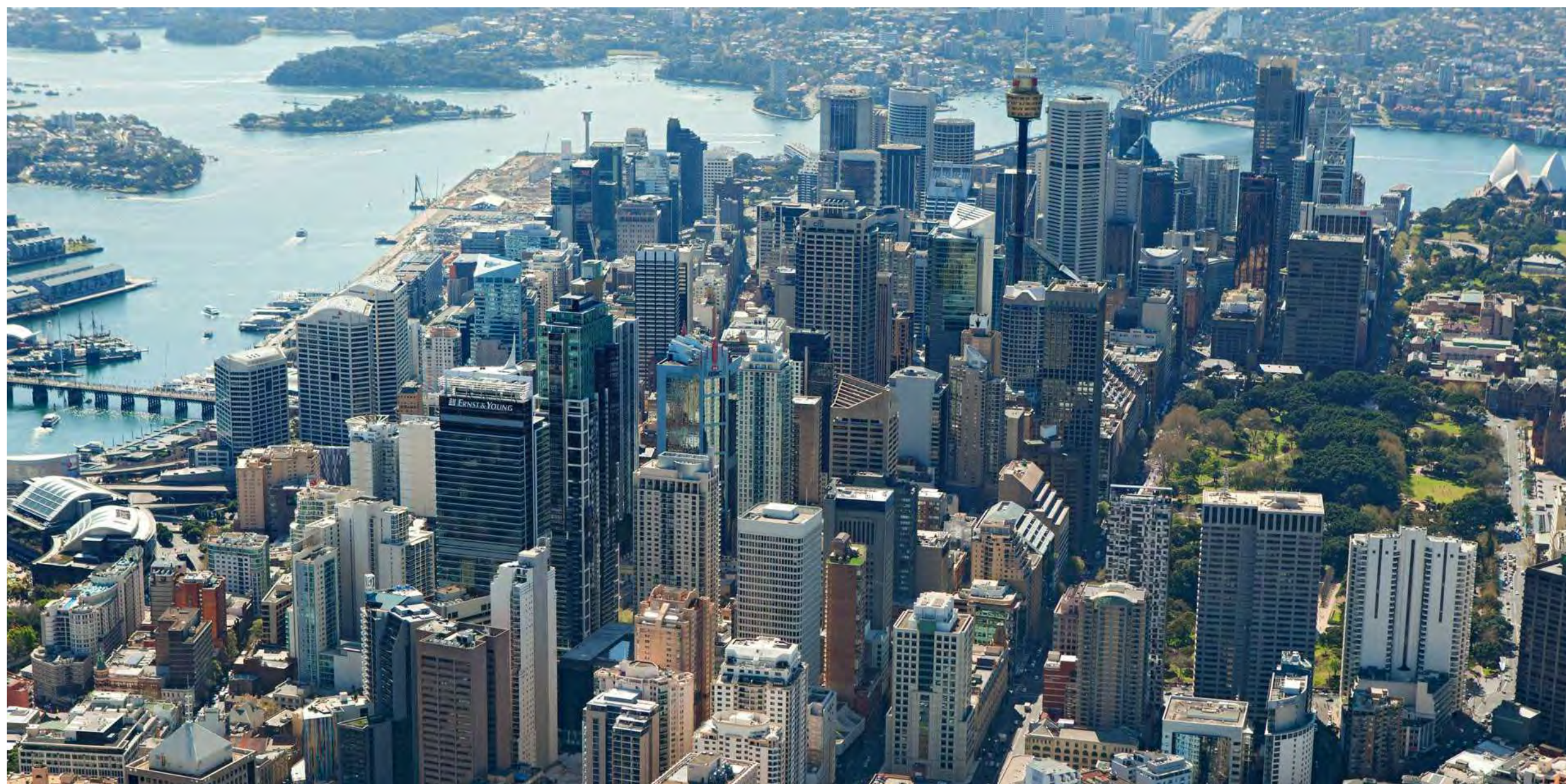
APPENDIX D



| issue | amendment | date |
|-------|--------------------|------------|
| 7 | Consultant Issue | 09.02.2018 |
| 8 | Consultant Issue | 12.02.2018 |
| 9 | Consultant Issue | 15.02.2018 |
| 10 | Consultant Meeting | 16.02.2018 |
| 11 | Consultant Meeting | 23.02.2018 |
| 12 | Consultant Issue | 08.03.2018 |
| 13 | Consultant Issue | 13.03.2018 |
| 14 | Consultant Issue | 15.03.2018 |
| 15 | Consultant Issue | 20.03.2018 |
| 16 | Consultant Issue | 23.03.2018 |
| 17 | Consultant Issue | 29.03.2018 |
| 18 | Consultant Issue | 10.04.2018 |
| 19 | Design Reports | 26.04.2018 |
| 20 | Design Reports | 15.06.2018 |

Pitt Street North OSD : Sydney Metro Developed Scheme

27 July 2018



architectus™

Architectus Sydney
Level 18 MLC Centre
19 Martin Place
Sydney NSW 2000
T (61 2) 8552 8400
F (61 2) 8552 8600
sydney@architectus.com.au
ABN 90 131 245 684

project

Pitt Street North OSD

drawing

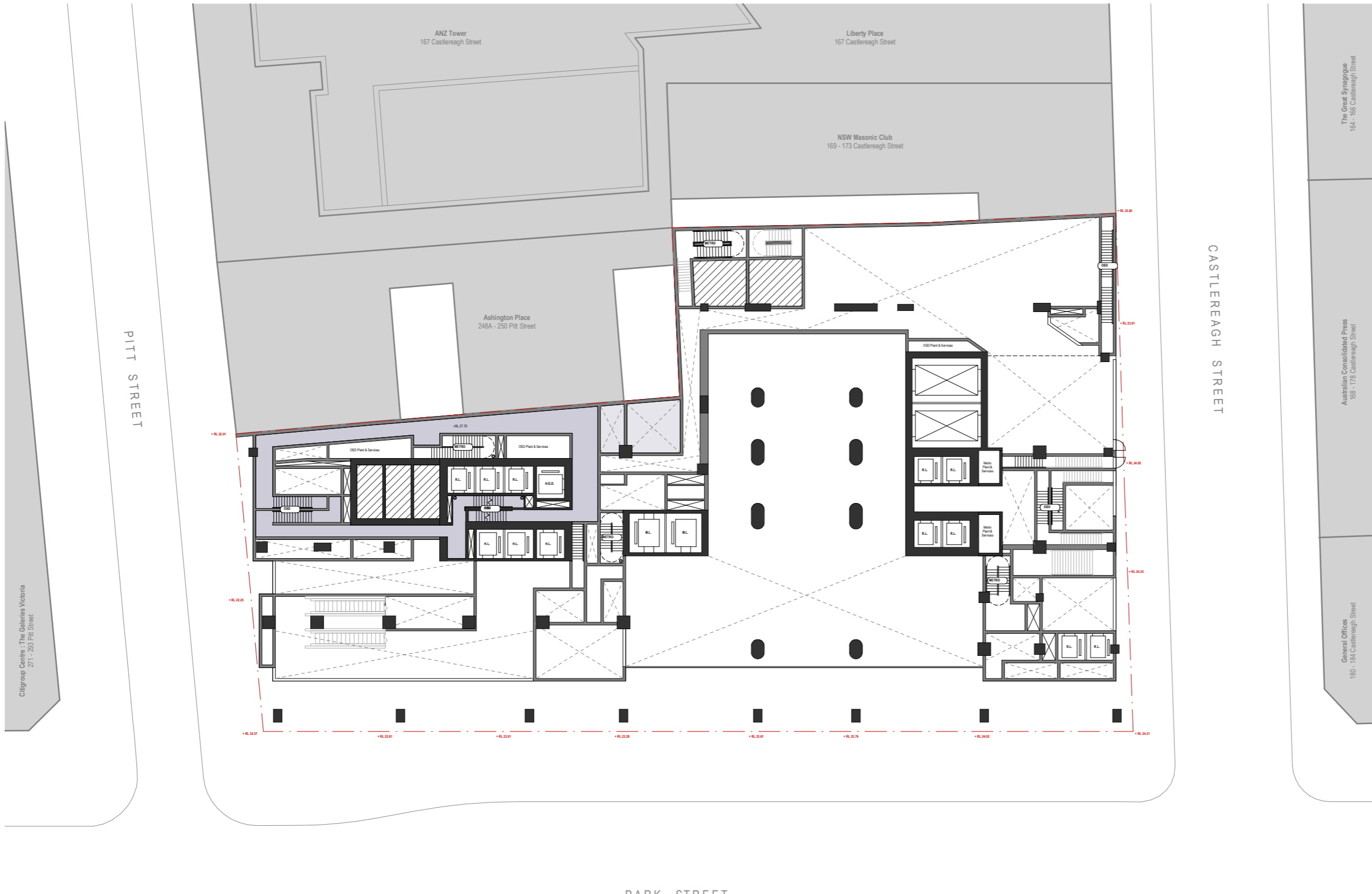
Package Cover Page

| scale | drawing no. |
|---------|-------------|
| @A1 | AR-00-00 |
| drawn | issue |
| BK | |
| checked | project no. |
| BK | 170493 |
| | 20 |



| issue | amendment | date |
|-------|------------------|------------|
| 1 | Consultant Issue | 13.03.2018 |
| 2 | Consultant Issue | 15.03.2018 |
| 3 | Consultant Issue | 20.03.2018 |
| 4 | Consultant Issue | 23.03.2018 |
| 5 | Consultant Issue | 29.03.2018 |
| 6 | Consultant Issue | 10.04.2018 |
| 7 | Design Reports | 26.04.2018 |
| 8 | Design Reports | 15.06.2018 |
| | | |
| | | |
| | | |
| | | |
| | | |
| | | |

Note: Development may project beyond the noted permissible envelope area to 6m in accordance with the DCP Weighted Average Setback provisions contained in the SDCP.





| issue | amendment | date |
|-------|--------------------|------------|
| 9 | Consultant Issue | 15.02.2018 |
| 10 | Consultant Meeting | 16.02.2018 |
| 11 | Consultant Meeting | 23.02.2018 |
| 12 | Consultant Issue | 08.03.2018 |
| 13 | Consultant Issue | 08.03.2018 |
| 14 | Consultant Issue | 09.03.2018 |
| 15 | Consultant Issue | 13.03.2018 |
| 16 | Consultant Issue | 15.03.2018 |
| 17 | Consultant Issue | 20.03.2018 |
| 18 | Consultant Issue | 23.03.2018 |
| 19 | Consultant Issue | 29.03.2018 |
| 20 | Consultant Issue | 10.04.2018 |
| 21 | Design Reports | 26.04.2018 |
| 22 | Design Reports | 15.06.2018 |

Note: Development may project beyond the noted permissible envelope area to 6m in accordance with the DCP Weighted Average Setback provisions contained in the SDCP.

Legend

- Unpaid Concourse
- Station Facilities
- Services & BOH
- OSD Hotel
- OSD Commercial Office
- OSD Residential Apartments





| issue | amendment | date |
|-------|--------------------|------------|
| 9 | Consultant Issue | 15.02.2018 |
| 10 | Consultant Meeting | 16.02.2018 |
| 11 | Consultant Meeting | 23.02.2018 |
| 12 | Consultant Issue | 08.03.2018 |
| 13 | Consultant Issue | 08.03.2018 |
| 14 | Consultant Issue | 09.03.2018 |
| 15 | Consultant Issue | 13.03.2018 |
| 16 | Consultant Issue | 15.03.2018 |
| 17 | Consultant Issue | 20.03.2018 |
| 18 | Consultant Issue | 23.03.2018 |
| 19 | Consultant Issue | 29.03.2018 |
| 20 | Consultant Issue | 10.04.2018 |
| 21 | Design Reports | 26.04.2018 |
| 22 | Design Reports | 15.06.2018 |

Note: Development may project beyond the noted permissible envelope area to 6m in accordance with the DCP Weighted Average Setback provisions contained in the SDCP.

Legend

- Unpaid Concourse
- Station Facilities
- Services & BOH
- OSD Hotel
- OSD Commercial Office
- OSD Residential Apartments





| issue | amendment | date |
|-------|--------------------|------------|
| 9 | Consultant Issue | 15.02.2018 |
| 10 | Consultant Meeting | 16.02.2018 |
| 11 | Consultant Meeting | 23.02.2018 |
| 12 | Consultant Issue | 08.03.2018 |
| 13 | Consultant Issue | 08.03.2018 |
| 14 | Consultant Issue | 09.03.2018 |
| 15 | Consultant Issue | 13.03.2018 |
| 16 | Consultant Issue | 15.03.2018 |
| 17 | Consultant Issue | 20.03.2018 |
| 18 | Consultant Issue | 23.03.2018 |
| 19 | Consultant Issue | 29.03.2018 |
| 20 | Consultant Issue | 10.04.2018 |
| 21 | Design Reports | 26.04.2018 |
| 22 | Design Reports | 15.06.2018 |

Note: Development may project beyond the noted permissible envelope area to 6m in accordance with the DCP Weighted Average Setback provisions contained in the SDCP.

Legend

- Unpaid Concourse
- Station Facilities
- Services & BOH
- OSD Hotel
- OSD Commercial Office
- OSD Residential Apartments



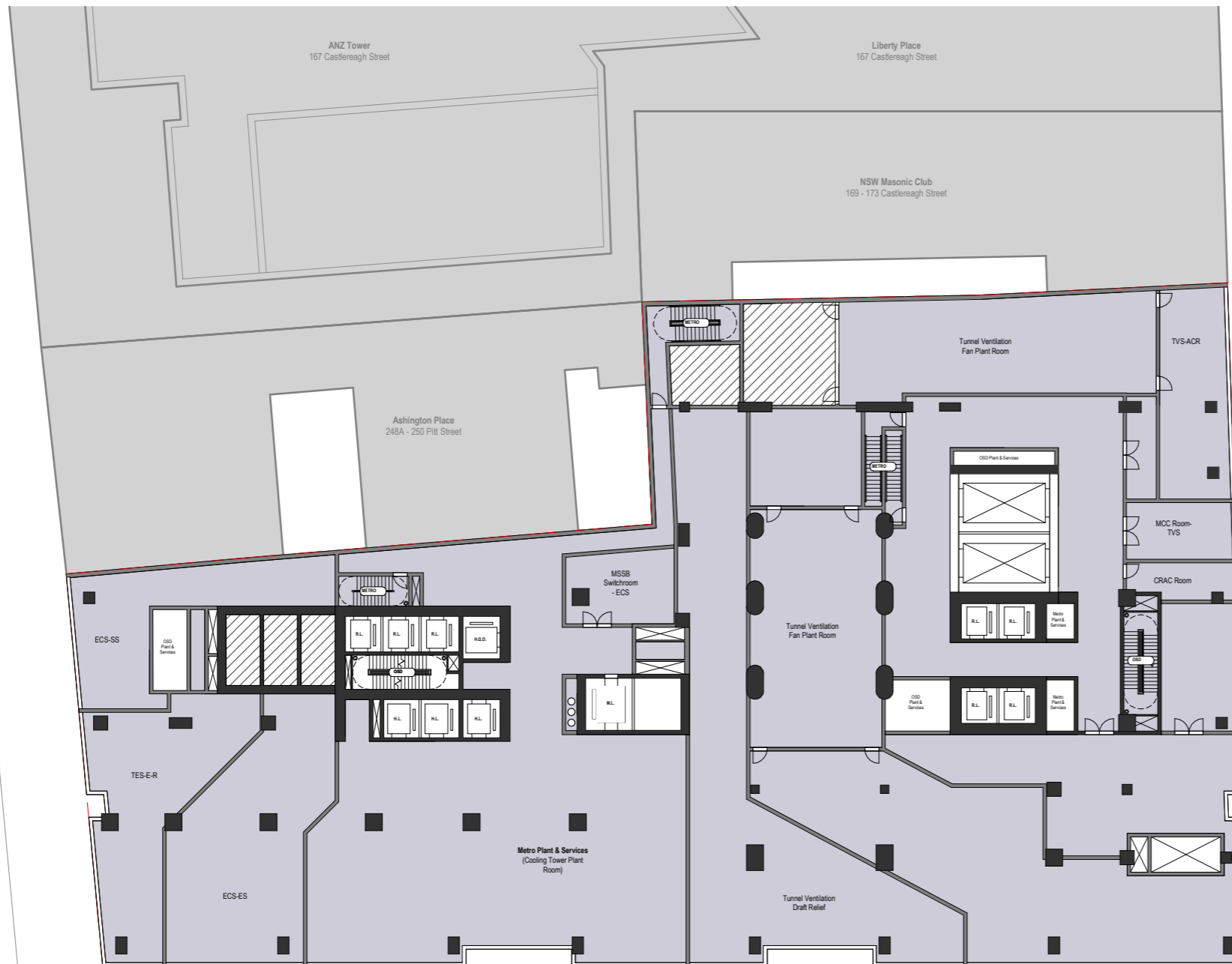


| issue | amendment | date |
|-------|--------------------|------------|
| 9 | Consultant Issue | 15.02.2018 |
| 10 | Consultant Meeting | 16.02.2018 |
| 11 | Consultant Meeting | 23.02.2018 |
| 12 | Consultant Issue | 08.03.2018 |
| 13 | Consultant Issue | 08.03.2018 |
| 14 | Consultant Issue | 09.03.2018 |
| 15 | Consultant Issue | 13.03.2018 |
| 16 | Consultant Issue | 15.03.2018 |
| 17 | Consultant Issue | 20.03.2018 |
| 18 | Consultant Issue | 23.03.2018 |
| 19 | Consultant Issue | 23.03.2018 |
| 20 | Consultant Issue | 10.04.2018 |
| 21 | Design Reports | 26.04.2018 |
| 22 | Design Reports | 15.06.2018 |

Note: Development may project beyond the noted permissible envelope area to 6m in accordance with the DCP Weighted Average Setback provisions contained in the SDCP.

Legend

- Unpaid Concourse
- Station Facilities
- Services & BOH
- OSD Hotel
- OSD Commercial Office
- OSD Residential Apartments



PARK STREET

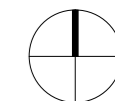


| issue | amendment | date |
|-------|--------------------|------------|
| 6 | Consultant Issue | 12.02.2018 |
| 7 | Consultant Issue | 15.02.2018 |
| 8 | Consultant Meeting | 16.02.2018 |
| 9 | Consultant Meeting | 23.02.2018 |
| 10 | Consultant Issue | 08.03.2018 |
| 11 | Consultant Issue | 09.03.2018 |
| 12 | Consultant Issue | 13.03.2018 |
| 13 | Consultant Issue | 15.03.2018 |
| 14 | Consultant Issue | 20.03.2018 |
| 15 | Consultant Issue | 23.03.2018 |
| 16 | Consultant Issue | 29.03.2018 |
| 17 | Consultant Issue | 10.04.2018 |
| 18 | Design Reports | 26.04.2018 |
| 19 | Design Reports | 15.06.2018 |

Note: Development may project beyond the noted permissible envelope area to 6m in accordance with the DCP Weighted Average Setback provisions contained in the SDCP.



- Legend**
- Unpaid Concourse
 - Station Facilities
 - Services & BOH
 - OSD Hotel
 - OSD Commercial Office
 - OSD Residential Apartments



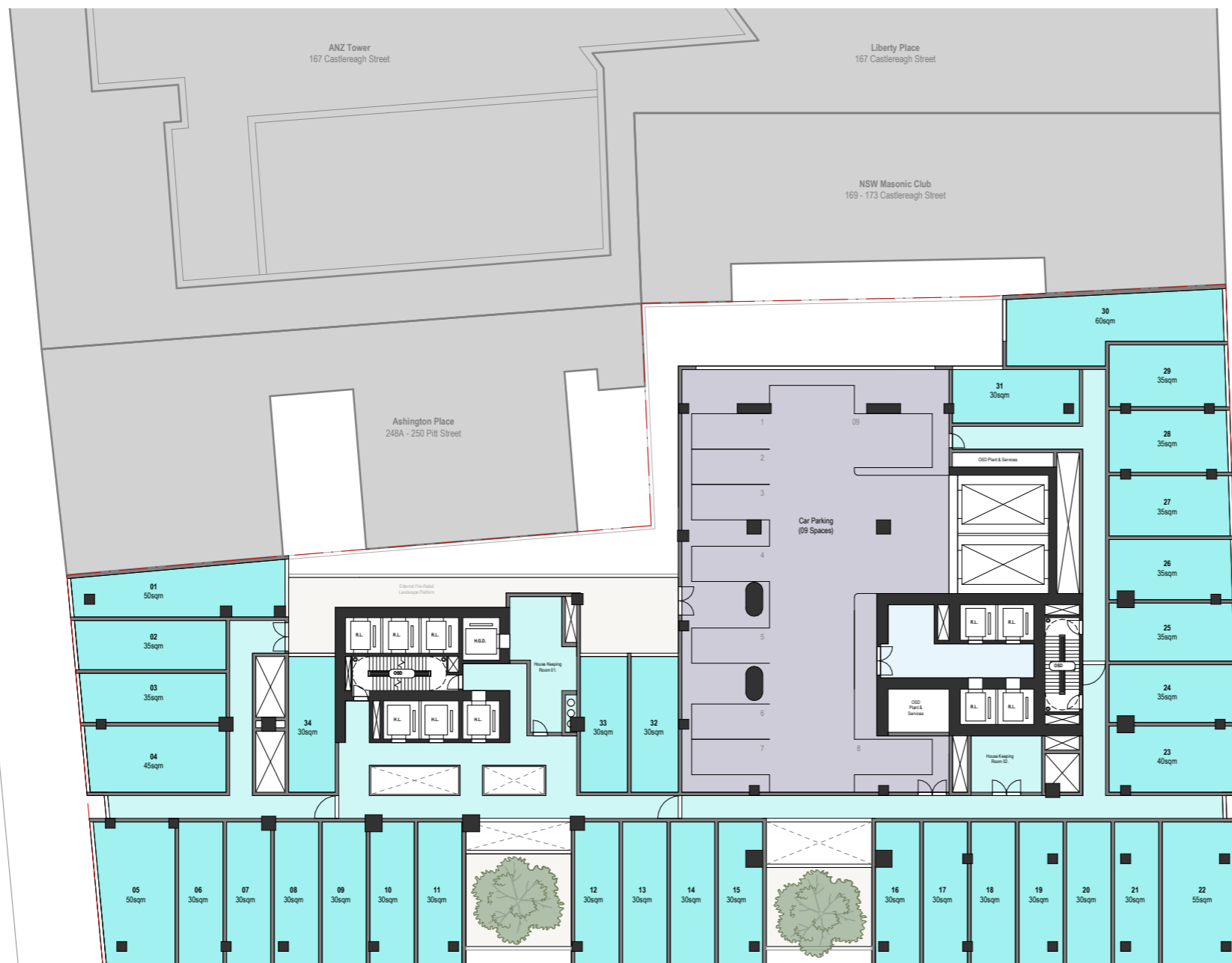


| issue | amendment | date |
|-------|--------------------|------------|
| 5 | Consultant Issue | 12.02.2018 |
| 6 | Consultant Issue | 15.02.2018 |
| 7 | Consultant Meeting | 16.02.2018 |
| 8 | Consultant Meeting | 23.02.2018 |
| 9 | Consultant Issue | 08.03.2018 |
| 10 | Consultant Issue | 09.03.2018 |
| 11 | Consultant Issue | 13.03.2018 |
| 12 | Consultant Issue | 15.03.2018 |
| 13 | Consultant Issue | 20.03.2018 |
| 14 | Consultant Issue | 23.03.2018 |
| 15 | Consultant Issue | 29.03.2018 |
| 16 | Consultant Issue | 10.04.2018 |
| 17 | Design Reports | 26.04.2018 |
| 18 | Design Reports | 15.06.2018 |

Note: Development may project beyond the noted permissible envelope area to 6m in accordance with the DCP Weighted Average Setback provisions contained in the SDCP.

Legend

- Unpaid Concourse
- Station Facilities
- Services & BOH
- OSD Hotel
- OSD Commercial Office
- OSD Residential Apartments



CASTLEREAGH STREET

PITT STREET

PARK STREET



| Issue | amendment | date |
|-------|--------------------|------------|
| 9 | Consultant Issue | 12.02.2018 |
| 10 | Consultant Issue | 15.02.2018 |
| 11 | Consultant Meeting | 16.02.2018 |
| 12 | Consultant Meeting | 23.02.2018 |
| 13 | Consultant Issue | 08.03.2018 |
| 14 | Consultant Issue | 09.03.2018 |
| 15 | Consultant Issue | 13.03.2018 |
| 16 | Consultant Issue | 15.03.2018 |
| 17 | Consultant Issue | 20.03.2018 |
| 18 | Consultant Issue | 23.03.2018 |
| 19 | Consultant Issue | 29.03.2018 |
| 20 | Consultant Issue | 10.04.2018 |
| 21 | Design Reports | 26.04.2018 |
| 22 | Design Reports | 15.06.2018 |

Note: Development may project beyond the noted permissible envelope area to 6m in accordance with the DCP Weighted Average Setback provisions contained in the SDCP.

Legend

- Unpaid Concourse
- Station Facilities
- Services & BOH
- OSD Hotel
- OSD Commercial Office
- OSD Residential Apartments





| issue | amendment | date |
|-------|--------------------|------------|
| 8 | Consultant Issue | 12.02.2018 |
| 9 | Consultant Issue | 15.02.2018 |
| 10 | Consultant Meeting | 16.02.2018 |
| 11 | Consultant Meeting | 23.02.2018 |
| 12 | Consultant Issue | 08.03.2018 |
| 13 | Consultant Issue | 09.03.2018 |
| 14 | Consultant Issue | 13.03.2018 |
| 15 | Consultant Issue | 15.03.2018 |
| 16 | Consultant Issue | 20.03.2018 |
| 17 | Consultant Issue | 23.03.2018 |
| 18 | Consultant Issue | 29.03.2018 |
| 19 | Consultant Issue | 10.04.2018 |
| 20 | Design Reports | 26.04.2018 |
| 21 | Design Reports | 15.06.2018 |

Note: Development may project beyond the noted permissible envelope area to 6m in accordance with the DCP Weighted Average Setback provisions contained in the SDCP.

Legend

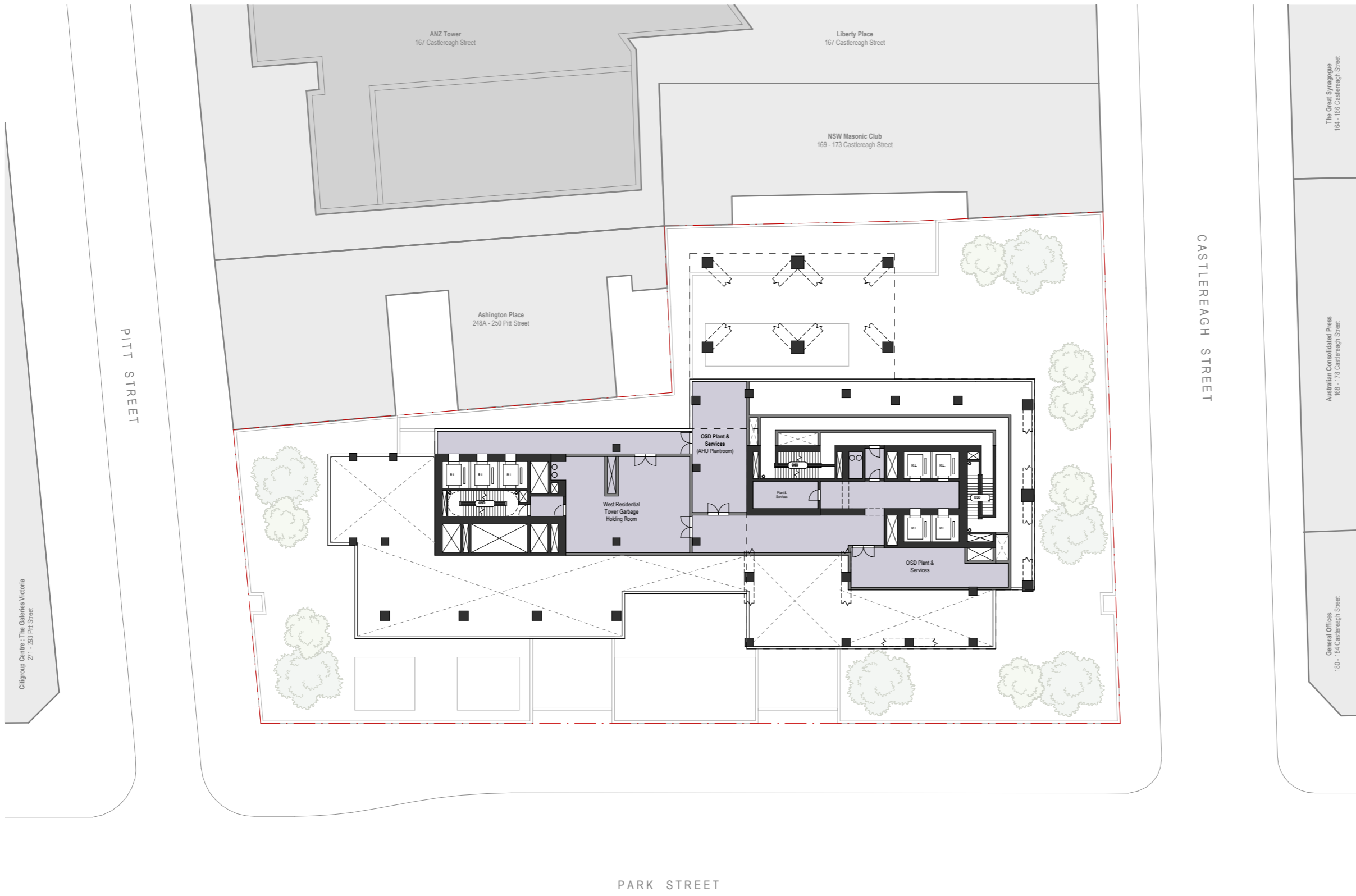
- Unpaid Concourse
- Station Facilities
- Services & BOH
- OSD Hotel
- OSD Commercial Office
- OSD Residential Apartments





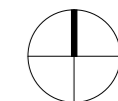
| issue | amendment | date |
|-------|--------------------|------------|
| 3 | Consultant Issue | 06.02.2018 |
| 4 | Consultant Issue | 15.02.2018 |
| 5 | Consultant Meeting | 16.02.2018 |
| 6 | Consultant Meeting | 23.02.2018 |
| 7 | Consultant Issue | 08.03.2018 |
| 8 | Consultant Issue | 09.03.2018 |
| 9 | Consultant Issue | 13.03.2018 |
| 10 | Consultant Issue | 15.03.2018 |
| 11 | Consultant Issue | 20.03.2018 |
| 12 | Consultant Issue | 23.03.2018 |
| 13 | Consultant Issue | 29.03.2018 |
| 14 | Consultant Issue | 10.04.2018 |
| 15 | Design Reports | 26.04.2018 |
| 16 | Design Reports | 15.06.2018 |

Note: Development may project beyond the noted permissible envelope area to 6m in accordance with the DCP Weighted Average Setback provisions contained in the SDCP.



Legend

| | |
|--|----------------------------|
| | Unpaid Concourse |
| | Station Facilities |
| | Services & BOH |
| | OSD Hotel |
| | OSD Commercial Office |
| | OSD Residential Apartments |





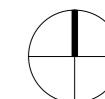
Do not scale drawings. Verify all dimensions on site

| issue | amendment | date |
|-------|--------------------|------------|
| 10 | Consultant Issue | 15.02.2018 |
| 11 | Consultant Meeting | 16.02.2018 |
| 12 | Consultant Meeting | 23.02.2018 |
| 13 | Consultant Issue | 08.03.2018 |
| 14 | Consultant Issue | 09.03.2018 |
| 15 | Consultant Issue | 13.03.2018 |
| 16 | Consultant Issue | 15.03.2018 |
| 17 | Consultant Issue | 20.03.2018 |
| 18 | Consultant Issue | 23.03.2018 |
| 19 | Consultant Issue | 29.03.2018 |
| 20 | Consultant Issue | 10.04.2018 |
| 21 | Design Reports | 26.04.2018 |
| 22 | Design Reports | 15.06.2018 |
| 23 | Design Reports | 21.06.2018 |

Note: Development may project beyond the noted permissible envelope area to 6m in accordance with the DCP Weighted Average Setback provisions contained in the SDCP.

Legend

- Unpaid Concourse
- Station Facilities
- Services & BOH
- OSD Hotel
- OSD Commercial Office
- OSD Residential Apartments



project

Pitt Street North OSD

drawing

GA - Level 13-19 - Typical Residential

scale 1 : 200@A1

drawing no.

drawn Author

AR-01-14

checked Checker

issue

project no 170493

23



| issue | amendment | date |
|-------|------------------|------------|
| 1 | Consultant Issue | 08.03.2018 |
| 2 | Consultant Issue | 09.03.2018 |
| 3 | Consultant Issue | 13.03.2018 |
| 4 | Consultant Issue | 15.03.2018 |
| 5 | Consultant Issue | 20.03.2018 |
| 6 | Consultant Issue | 23.03.2018 |
| 7 | Consultant Issue | 29.03.2018 |
| 8 | Consultant Issue | 10.04.2018 |
| 9 | Design Reports | 26.04.2018 |
| 10 | Design Reports | 15.06.2018 |

Note: Development may project beyond the noted permissible envelope area to 6m in accordance with the DCP Weighted Average Setback provisions contained in the SDCP.



- Legend**
- Unpaid Concourse
 - Station Facilities
 - Services & BOH
 - OSD Hotel
 - OSD Commercial Office
 - OSD Residential Apartments



Architectus Sydney
Level 18 MLC Centre
19 Martin Place
Sydney NSW 2000
T (61 2) 8552 8400
F (61 2) 8252 8600
sydney@architectus.com.au
ABN 90 131 245 684

project

Pitt Street North OSD

drawing

GA - Level 20 - Typical Residential

| | | | |
|------------|------------|-------------|----------|
| scale | 1 : 200@A1 | drawing no. | AR-01-15 |
| drawn | Author | checked | Checker |
| checked | Checker | issue | 10 |
| project no | 170493 | | |

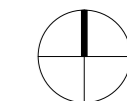


| issue | amendment | date |
|-------|------------------|------------|
| 1 | Consultant Issue | 08.03.2018 |
| 2 | Consultant Issue | 09.03.2018 |
| 3 | Consultant Issue | 13.03.2018 |
| 4 | Consultant Issue | 15.03.2018 |
| 5 | Consultant Issue | 20.03.2018 |
| 6 | Consultant Issue | 23.03.2018 |
| 7 | Consultant Issue | 29.03.2018 |
| 8 | Consultant Issue | 10.04.2018 |
| 9 | Design Reports | 26.04.2018 |
| 10 | Design Reports | 15.06.2018 |
| 11 | Design Reports | 21.06.2018 |

Note: Development may project beyond the noted permissible envelope area to 6m in accordance with the DCP Weighted Average Setback provisions contained in the SDCP.



- Legend**
- Unpaid Concourse
 - Station Facilities
 - Services & BOH
 - OSD Hotel
 - OSD Commercial Office
 - OSD Residential Apartments



Architectus Sydney
Level 18 MLC Centre
19 Martin Place
Sydney NSW 2000
T (61 2) 8252 8400
F (61 2) 8252 8600
sydney@architectus.com.au
ABN 99 131 245 684

| | | |
|------------|--|----------------------|
| project | Pitt Street North OSD | |
| drawing | GA - Level 21-29 - Typical Residential | |
| scale | 1 : 200@A1 | drawing no. AR-01-16 |
| drawn | Author | Checker |
| checked | Checker | Issue |
| project no | 170493 | 11 |

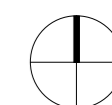


| issue | amendment | date |
|-------|------------------|------------|
| 1 | Consultant Issue | 08.03.2018 |
| 2 | Consultant Issue | 09.03.2018 |
| 3 | Consultant Issue | 13.03.2018 |
| 4 | Consultant Issue | 15.03.2018 |
| 5 | Consultant Issue | 20.03.2018 |
| 6 | Consultant Issue | 23.03.2018 |
| 7 | Consultant Issue | 29.03.2018 |
| 8 | Consultant Issue | 10.04.2018 |
| 9 | Design Reports | 26.04.2018 |
| 10 | Design Reports | 15.06.2018 |
| 11 | Design Reports | 21.06.2018 |

Note: Development may project beyond the noted permissible envelope area to 6m in accordance with the DCP Weighted Average Setback provisions contained in the SDCP.

Legend

- Unpaid Concourse
- Station Facilities
- Services & BOH
- OSD Hotel
- OSD Commercial Office
- OSD Residential Apartments



project

Pitt Street North OSD

drawing

GA - Level 30-36 - Typical Residential

scale 1 : 200@A1

drawing no.

drawn Author

AR-01-17

checked Checker

issue

project no 170493

11

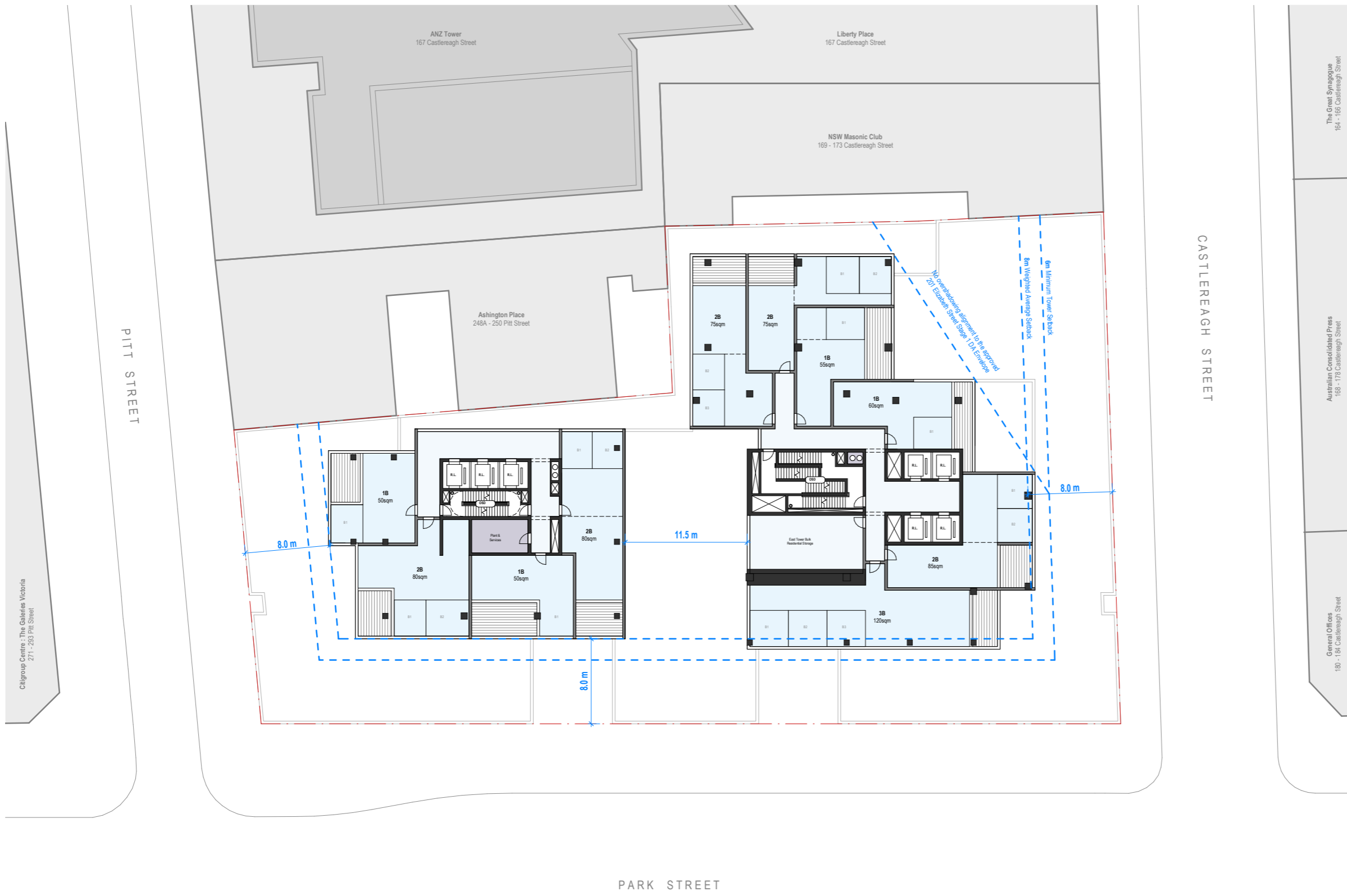


| issue | amendment | date |
|-------|------------------|------------|
| 1 | Consultant Issue | 08.03.2018 |
| 2 | Consultant Issue | 09.03.2018 |
| 3 | Consultant Issue | 13.03.2018 |
| 4 | Consultant Issue | 15.03.2018 |
| 5 | Consultant Issue | 20.03.2018 |
| 6 | Consultant Issue | 23.03.2018 |
| 7 | Consultant Issue | 29.03.2018 |
| 8 | Consultant Issue | 10.04.2018 |
| 9 | Design Reports | 26.04.2018 |
| 10 | Design Reports | 15.06.2018 |
| 11 | Design Reports | 21.06.2018 |

Note: Development may project beyond the noted permissible envelope area to 6m in accordance with the DCP Weighted Average Setback provisions contained in the SDCP.

Legend

- Unpaid Concourse
- Station Facilities
- Services & BOH
- OSD Hotel
- OSD Commercial Office
- OSD Residential Apartments





| issue | amendment | date |
|-------|--------------------|------------|
| 9 | Consultant Issue | 15.02.2018 |
| 10 | Consultant Meeting | 16.02.2018 |
| 11 | Consultant Meeting | 23.02.2018 |
| 12 | Consultant Issue | 08.03.2018 |
| 13 | Consultant Issue | 09.03.2018 |
| 14 | Consultant Issue | 13.03.2018 |
| 15 | Consultant Issue | 15.03.2018 |
| 16 | Consultant Issue | 20.03.2018 |
| 17 | Consultant Issue | 23.03.2018 |
| 18 | Consultant Issue | 29.03.2018 |
| 19 | Consultant Issue | 10.04.2018 |
| 20 | Design Reports | 26.04.2018 |
| 21 | Design Reports | 15.06.2018 |
| 22 | Design Reports | 21.06.2018 |

Note: Development may project beyond the noted permissible envelope area to 6m in accordance with the DCP Weighted Average Setback provisions contained in the SDCP.



Legend

- Unpaid Concourse
- Station Facilities
- Services & BOH
- OSD Hotel
- OSD Commercial Office
- OSD Residential Apartments





| issue | amendment | date |
|-------|--------------------|------------|
| 9 | Consultant Issue | 15.02.2018 |
| 10 | Consultant Meeting | 16.02.2018 |
| 11 | Consultant Meeting | 23.02.2018 |
| 12 | Consultant Issue | 08.03.2018 |
| 13 | Consultant Issue | 09.03.2018 |
| 14 | Consultant Issue | 13.03.2018 |
| 15 | Consultant Issue | 15.03.2018 |
| 16 | Consultant Issue | 20.03.2018 |
| 17 | Consultant Issue | 23.03.2018 |
| 18 | Consultant Issue | 29.03.2018 |
| 19 | Consultant Issue | 10.04.2018 |
| 20 | Design Reports | 26.04.2018 |
| 21 | Design Reports | 15.06.2018 |
| 22 | Design Reports | 21.06.2018 |

Note: Development may project beyond the noted permissible envelope area to 6m in accordance with the DCP Weighted Average Setback provisions contained in the SDCP.

Legend

- Unpaid Concourse
- Station Facilities
- Services & BOH
- OSD Hotel
- OSD Commercial Office
- OSD Residential Apartments



project

Pitt Street North OSD

drawing

GA - Level 39 - Typical Residential

| | | | |
|------------|------------|-------------|----------|
| scale | 1 : 200@A1 | drawing no. | AR-01-20 |
| drawn | Author | checked | Checker |
| checked | Checker | issue | 22 |
| project no | 170493 | | |



PARK STREET

CASTLEREAGH STREET

PITT STREET

Cliffgroup Centre - The Galleries Victoria
271 - 293 Pitt Street

ANZ Tower
167 Castlereagh Street

Liberty Place
167 Castlereagh Street

NSW Masonic Club
169 - 173 Castlereagh Street

Ashington Place
248A - 250 Pitt Street

The Great Synagogue
164 - 166 Castlereagh Street

Australian Consolidated Press
168 - 178 Castlereagh Street

General Offices
180 - 184 Castlereagh Street

8.0 m

11.5 m

8.0 m

8.0 m

No overhanging alignment to be approved
2/1 Eastman Street Stage 1 D4 Envelope

6m Minimum Tower Setback
6m Weighted Average Setback

East Tower Bunk
Residential Storage

OSD Plant &
Services
(Outdoor Air MCH)

Plant &
Services

Plant &
Services

Plant &
Services

Plant &
Services

Plant &
Services

Plant &
Services

Plant &
Services

Plant &
Services

Plant &
Services

Plant &
Services

Plant &
Services

Plant &
Services

Plant &
Services

Plant &
Services

Plant &
Services

Plant &
Services

Plant &
Services

Plant &
Services

Plant &
Services

Plant &
Services

Plant &
Services

Plant &
Services

Plant &
Services

Plant &
Services

Plant &
Services

Plant &
Services

Plant &
Services

Plant &
Services

Plant &
Services

Plant &
Services

Plant &
Services

Plant &
Services

Plant &
Services

Plant &
Services

Plant &
Services

Plant &
Services

Plant &
Services

Plant &
Services

Plant &
Services

Plant &
Services

Plant &
Services

Plant &
Services

Plant &
Services

Plant &
Services

Plant &
Services

Plant &
Services

Plant &
Services

Plant &
Services

Plant &
Services

Plant &
Services

Plant &
Services

Plant &
Services

Plant &
Services

Plant &
Services

Plant &
Services

Plant &
Services

Plant &
Services

Plant &
Services

Plant &
Services

Plant &
Services

Plant &
Services

Plant &
Services

Plant &
Services

Plant &
Services

Plant &
Services

Plant &
Services

Plant &
Services

Plant &
Services

Plant &
Services

Plant &
Services

Plant &
Services

Plant &
Services

Plant &
Services

Plant &
Services

Plant &
Services

Plant &
Services

Plant &
Services

Plant &
Services

Plant &
Services

Plant &
Services

Plant &
Services

Plant &
Services

Plant &
Services

Plant &
Services

Plant &
Services

Plant &
Services

Plant &
Services

Plant &
Services

Plant &
Services

Plant &
Services

Plant &
Services

Plant &
Services

Plant &
Services

Plant &
Services

Plant &
Services

Plant &
Services

Plant &
Services

Plant &
Services

Plant &
Services

Plant &
Services

Plant &
Services

Plant &
Services

Plant &
Services

Plant &
Services

Plant &
Services

Plant &
Services

Plant &
Services

Plant &
Services

Plant &
Services

Plant &
Services

Plant &
Services

Plant &
Services

Plant &
Services

Plant &
Services

Plant &
Services

Plant &
Services

Plant &
Services

Plant &
Services

Plant &
Services

Plant &
Services

Plant &
Services

Plant &
Services

Plant &
Services

Plant &
Services

Plant &
Services

Plant &
Services

Plant &
Services

Plant &
Services

Plant &
Services

Plant &
Services

Plant &
Services

Plant &
Services

Plant &
Services

Plant &
Services

Plant &
Services

Plant &
Services

Plant &
Services

Plant &
Services

Plant &
Services

Plant &
Services

Plant &
Services

Plant &
Services

Plant &
Services

Plant &
Services

Plant &
Services

Plant &
Services

Plant &
Services

Plant &
Services

Plant &
Services

Plant &
Services

Plant &
Services

Plant &
Services

Plant &
Services

Plant &
Services

Plant &
Services

Plant &
Services

Plant &
Services

Plant &
Services

Plant &
Services

Plant &
Services

Plant &
Services

Plant &
Services

Plant &
Services

Plant &
Services

Plant &
Services

Plant &
Services

Plant &
Services

Plant &
Services

Plant &
Services

Plant &
Services

Plant &
Services

Plant &
Services

Plant &
Services

Plant &
Services

Plant &
Services

Plant &
Services

Plant &
Services

Plant &
Services

Plant &
Services

Plant &
Services

Plant &
Services

Plant &
Services

Plant &
Services

Plant &
Services

Plant &
Services

Plant &
Services

Plant &
Services

Plant &
Services

Plant &
Services

Plant &
Services

Plant &
Services

Plant &
Services

Plant &
Services

Plant &
Services

Plant &
Services

Plant &
Services

Plant &
Services

Plant &
Services

Plant &
Services

Plant &
Services

Plant &
Services

Plant &
Services

Plant &
Services



| Issue | amendment | date |
|-------|------------------|------------|
| 1 | Consultant Issue | 08.03.2018 |
| 2 | Consultant Issue | 09.03.2018 |
| 3 | Consultant Issue | 13.03.2018 |
| 4 | Consultant Issue | 15.03.2018 |
| 5 | Consultant Issue | 20.03.2018 |
| 6 | Consultant Issue | 23.03.2018 |
| 7 | Consultant Issue | 29.03.2018 |
| 8 | Consultant Issue | 10.04.2018 |
| 9 | Design Reports | 26.04.2018 |
| 10 | Design Reports | 15.06.2018 |
| 11 | Design Reports | 21.06.2018 |

Note: Development may project beyond the noted permissible envelope area to 6m in accordance with the DCP Weighted Average Setback provisions contained in the SDCP.

Legend

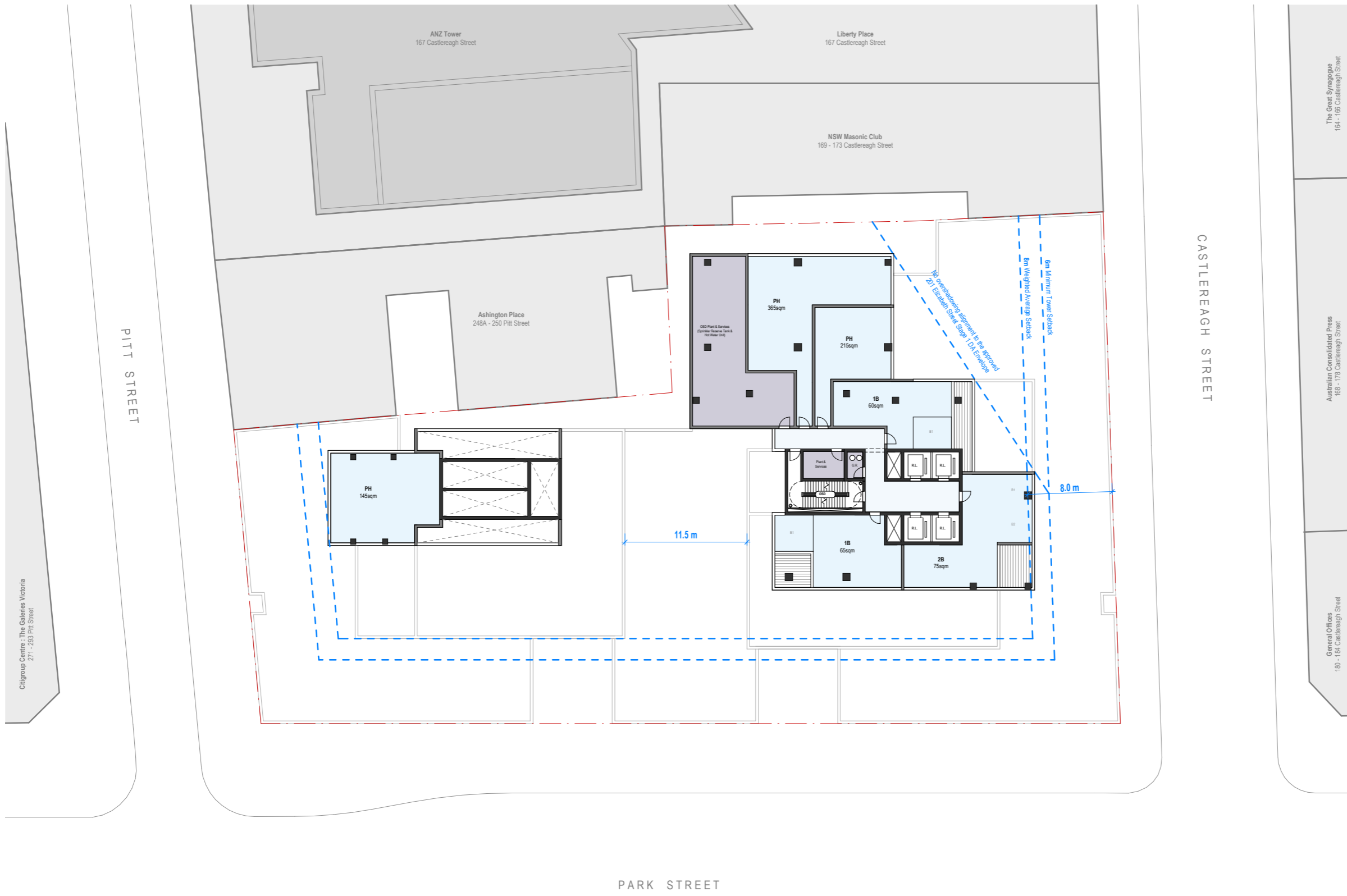
- Unpaid Concourse
- Station Facilities
- Services & BOH
- OSD Hotel
- OSD Commercial Office
- OSD Residential Apartments





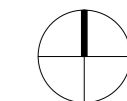
| issue | amendment | date |
|-------|------------------|------------|
| 1 | Consultant Issue | 08.03.2018 |
| 2 | Consultant Issue | 09.03.2018 |
| 3 | Consultant Issue | 13.03.2018 |
| 4 | Consultant Issue | 15.03.2018 |
| 5 | Consultant Issue | 20.03.2018 |
| 6 | Consultant Issue | 23.03.2018 |
| 7 | Consultant Issue | 29.03.2018 |
| 8 | Consultant Issue | 10.04.2018 |
| 9 | Design Reports | 26.04.2018 |
| 10 | Design Reports | 15.06.2018 |
| 11 | Design Reports | 21.06.2018 |

Note: Development may project beyond the noted permissible envelope area to 6m in accordance with the DCP Weighted Average Setback provisions contained in the SDCP.



Legend

- Unpaid Concourse
- Station Facilities
- Services & BOH
- OSD Hotel
- OSD Commercial Office
- OSD Residential Apartments



Architectus Sydney
Level 18 MLC Centre
10 Martin Place
Sydney NSW 2000
T (61 2) 8552 8400
F (61 2) 8252 8600
sydney@architectus.com.au
ABN 99 131 245 684

project

Pitt Street North OSD

drawing

GA - Level 41 - Typical Residential

| | | | |
|------------|------------|-------------|----------|
| scale | 1 : 200@A1 | drawing no. | AR-01-22 |
| drawn | Author | checked | Checker |
| checked | Checker | issue | 11 |
| project no | 170493 | | |

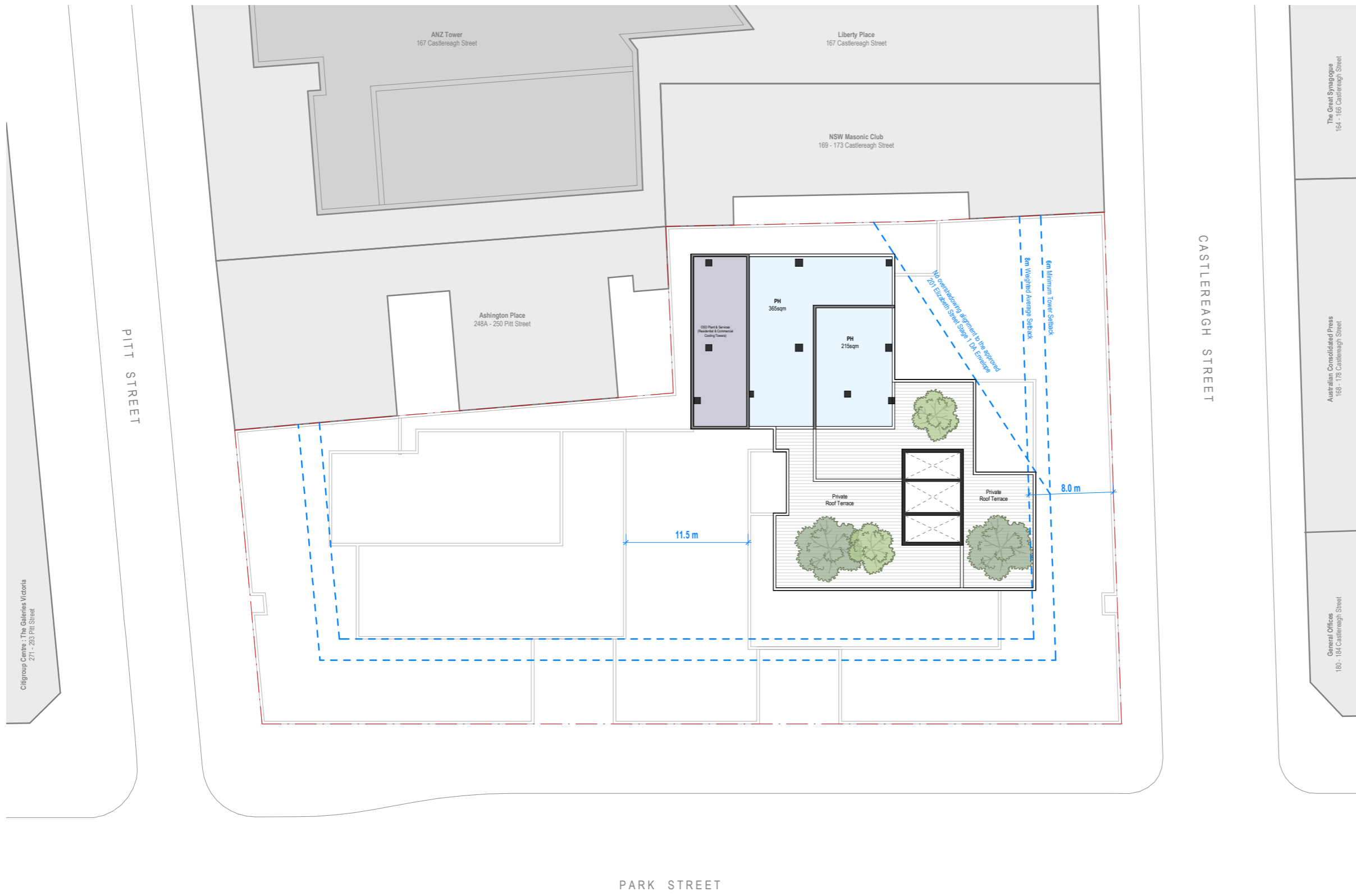


| issue | amendment | date |
|-------|--------------------|------------|
| 8 | Consultant Issue | 15.02.2018 |
| 9 | Consultant Meeting | 16.02.2018 |
| 10 | Consultant Meeting | 23.02.2018 |
| 11 | Consultant Issue | 08.03.2018 |
| 12 | Consultant Issue | 09.03.2018 |
| 13 | Consultant Issue | 13.03.2018 |
| 14 | Consultant Issue | 15.03.2018 |
| 15 | Consultant Issue | 20.03.2018 |
| 16 | Consultant Issue | 23.03.2018 |
| 17 | Consultant Issue | 29.03.2018 |
| 18 | Consultant Issue | 10.04.2018 |
| 19 | Design Reports | 26.04.2018 |
| 20 | Design Reports | 15.06.2018 |
| 21 | Design Reports | 21.06.2018 |

Note: Development may project beyond the noted permissible envelope area to fit in accordance with the DCP Weighted Average Setback provisions contained in the SDCP.

Legend

- Unpaid Concourse
- Station Facilities
- Services & BOH
- OSD Hotel
- OSD Commercial Office
- OSD Residential Apartments



project

Pitt Street North OSD

drawing

GA - Level 42 - Penthouse B

scale 1 : 200@A1

drawing no.

drawn Author

AR-01-23

checked Checker

issue

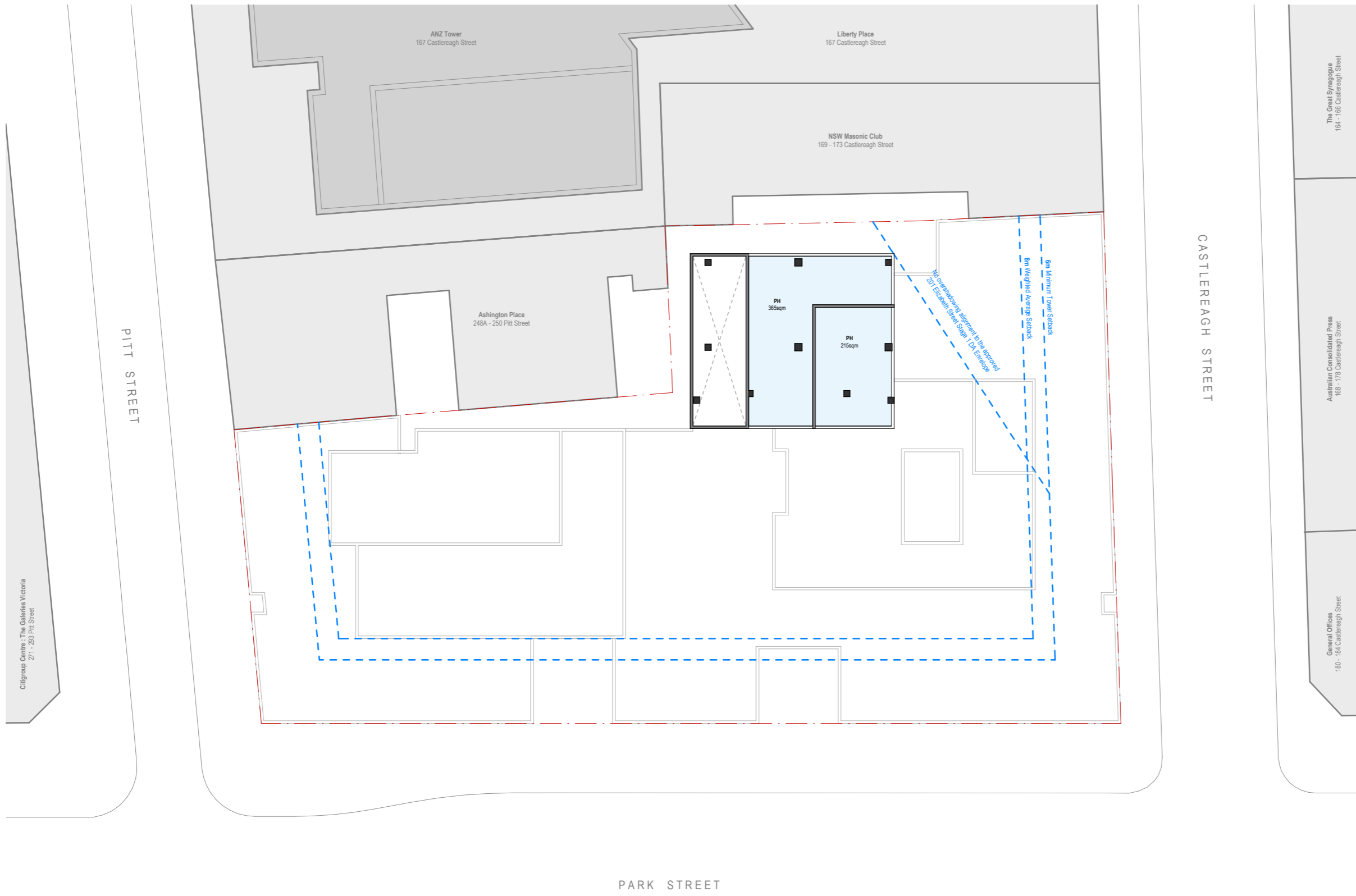
project no 170493

21



| issue | amendment | date |
|-------|--------------------|------------|
| 7 | Consultant Issue | 15.02.2018 |
| 8 | Consultant Meeting | 16.02.2018 |
| 9 | Consultant Meeting | 23.02.2018 |
| 10 | Consultant Issue | 08.03.2018 |
| 11 | Consultant Issue | 09.03.2018 |
| 12 | Consultant Issue | 13.03.2018 |
| 13 | Consultant Issue | 15.03.2018 |
| 14 | Consultant Issue | 20.03.2018 |
| 15 | Consultant Issue | 23.03.2018 |
| 16 | Consultant Issue | 29.03.2018 |
| 17 | Consultant Issue | 10.04.2018 |
| 18 | Design Reports | 26.04.2018 |
| 19 | Design Reports | 15.06.2018 |
| 20 | Design Reports | 21.06.2018 |

Note: Development may project beyond the noted permissible envelope area to 6m in accordance with the DCP Weighted Average Setback provisions contained in the SDCP.



Legend

| | |
|--|----------------------------|
| | Unpaid Concourse |
| | Station Facilities |
| | Services & BOH |
| | OSD Hotel |
| | OSD Commercial Office |
| | OSD Residential Apartments |

architectus™

Architectus Sydney
Level 18 MLC Centre
19 Martin Place
Sydney NSW 2000
T (61 2) 8552 8400
F (61 2) 8222 8600
sydney@architectus.com.au
ABN 99 131 245 684

Sydney
Melbourne
Adelaide
Auckland
Christchurch
Brisbane

| | | |
|------------|-----------------------------|----------------------|
| project | Pitt Street North OSD | |
| drawing | GA - Level 43 - Penthouse C | |
| scale | 1 : 200@A1 | drawing no. AR-01-24 |
| drawn | Author | Author |
| checked | Checker | Issue |
| project no | 170493 | 20 |

Architectus Group Pty Ltd is the owner of the copyright subsisting in these drawings, plans, designs and specifications. They must not be used, reproduced or copied, in whole or in part, nor may the information, ideas and concepts therein contained (which are confidential to Architectus Group Pty Ltd) be disclosed to any person without the prior written consent of that company.

Do not scale drawings.
Verify all dimensions on site

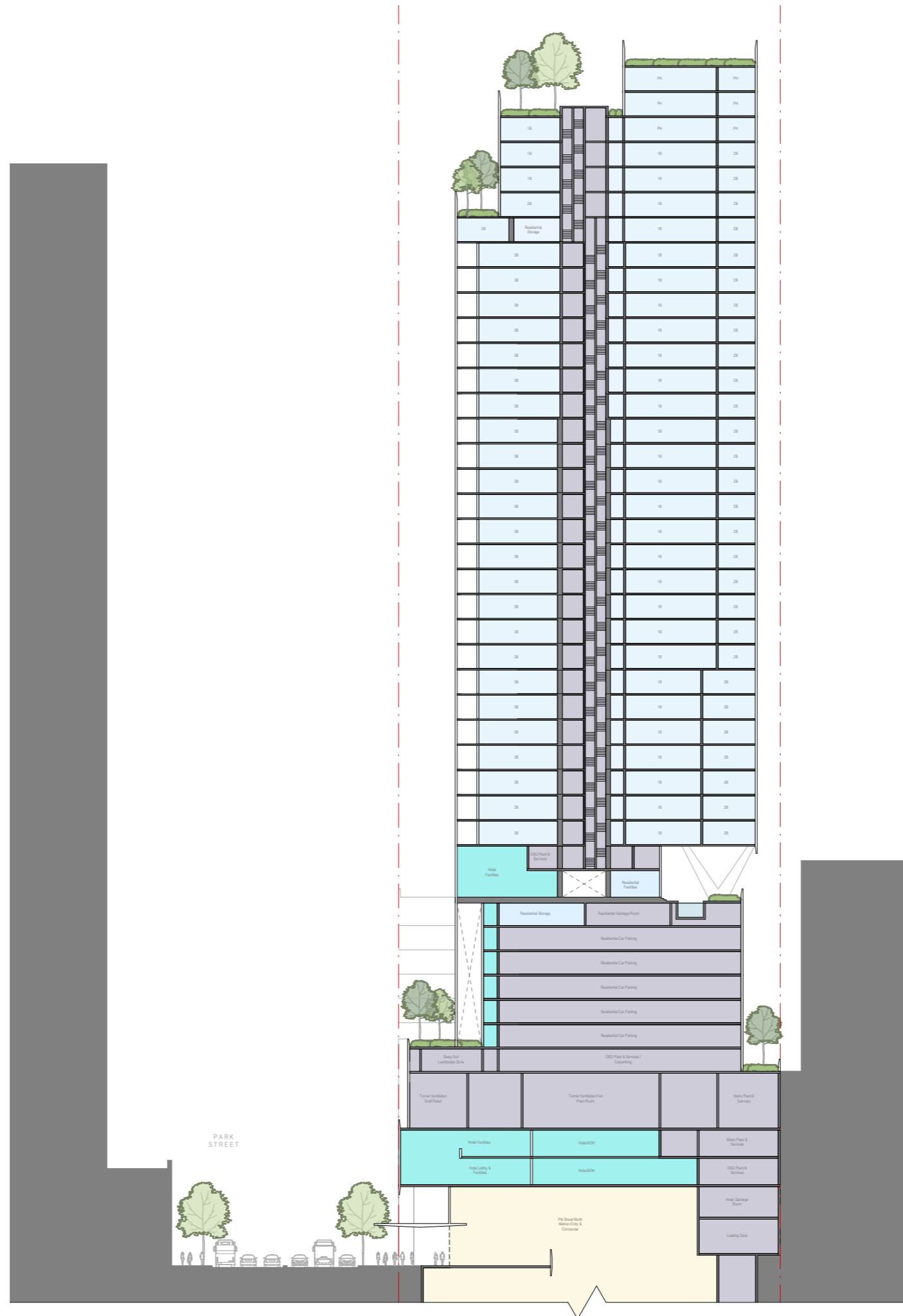


| issue | amendment | date |
|-------|--------------------|------------|
| 2 | Consultant Issue | 12.01.2018 |
| 3 | Consultant Issue | 29.01.2018 |
| 4 | Consultant Issue | 01.02.2018 |
| 5 | Consultant Issue | 02.02.2018 |
| 6 | Consultant Issue | 15.02.2018 |
| 7 | Consultant Meeting | 16.02.2018 |
| 8 | Consultant Meeting | 23.02.2018 |
| 9 | Consultant Issue | 09.03.2018 |
| 10 | Consultant Issue | 15.03.2018 |
| 11 | Consultant Issue | 20.03.2018 |
| 12 | Consultant Issue | 29.03.2018 |
| 13 | Consultant Issue | 10.04.2018 |
| 14 | Design Reports | 26.04.2018 |
| 15 | Design Reports | 15.06.2018 |

Note: Development may project beyond the noted permissible envelope area to 6m in accordance with the DCP Weighted Average Setback provisions contained in the SDCP.

Legend

- Unpaid Concourse
- Station Facilities
- Services & BOH
- OSD Hotel
- OSD Commercial Office
- OSD Residential Apartments



Architectus Sydney
Level 18 MLC Centre
19 Martin Place
Sydney NSW 2000
T (61 2) 8552 8400
F (61 2) 8552 8600
sydney@architectus.com.au
ABN 90 131 245 684

project

Pitt Street North OSD

drawing

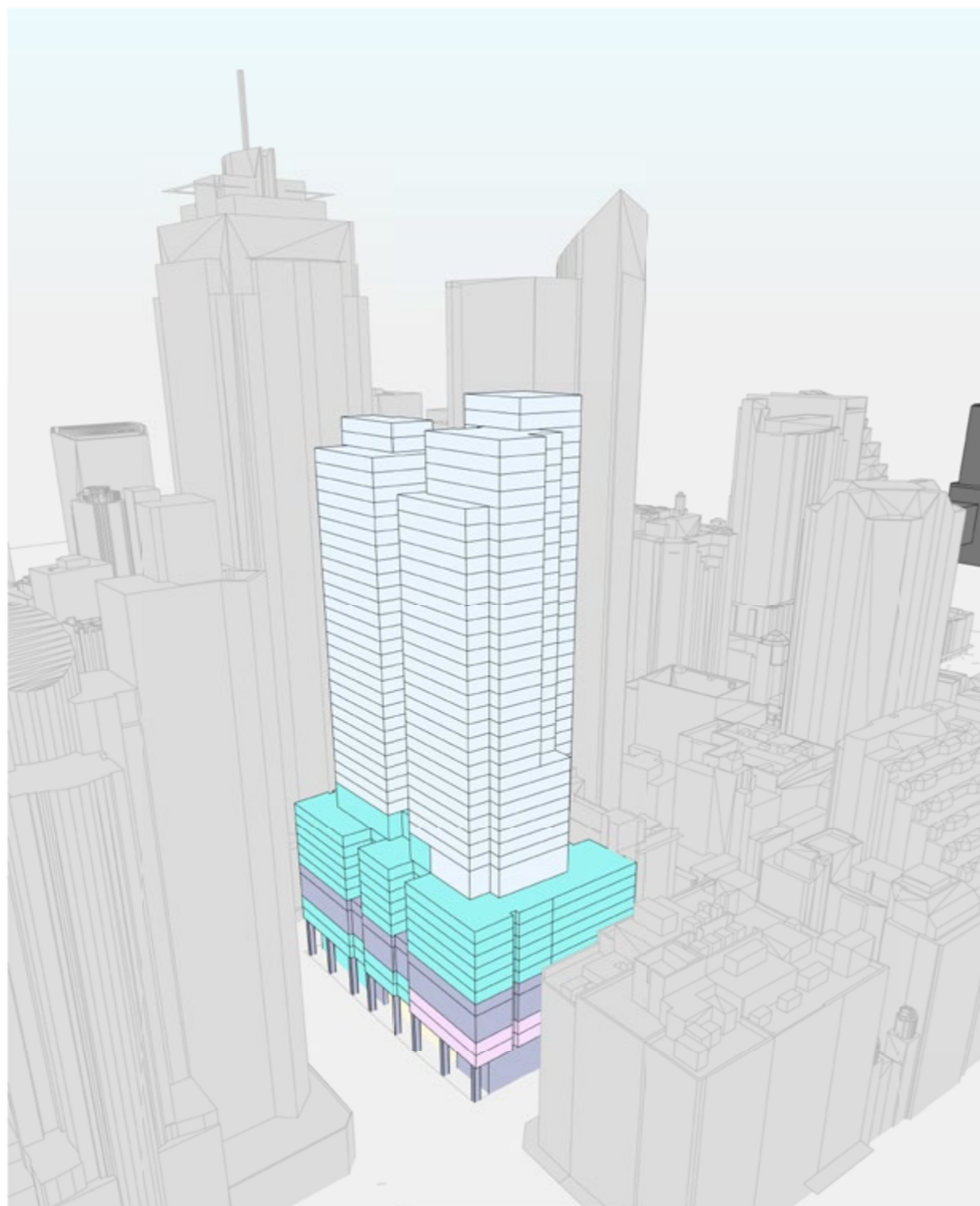
Section AA - North - South Section

| | | | |
|------------|-----------------|-------------|----------|
| scale | As indicated@A1 | drawing no. | AR-02-01 |
| drawn | Author | checked | Checker |
| checked | Checker | issue | 15 |
| project no | 170493 | | |



| issue | amendment | date |
|-------|--------------------|------------|
| 4 | Consultant Issue | 06.02.2018 |
| 5 | Consultant Issue | 15.02.2018 |
| 6 | Consultant Meeting | 16.02.2018 |
| 7 | Consultant Meeting | 23.02.2018 |
| 8 | Consultant Issue | 08.03.2018 |
| 9 | Consultant Issue | 09.03.2018 |
| 10 | Consultant Issue | 14.03.2018 |
| 11 | Consultant Issue | 15.03.2018 |
| 12 | Consultant Issue | 20.03.2018 |
| 13 | Consultant Issue | 23.03.2018 |
| 14 | Consultant Issue | 29.03.2018 |
| 15 | Consultant Issue | 10.04.2018 |
| 16 | Design Reports | 26.04.2018 |
| 17 | Design Reports | 15.06.2018 |

Note: Development may project beyond the noted permissible envelope area to 6m in accordance with the DCP Weighted Average Setback provisions contained in the SDCP.



Legend

| | |
|--|----------------------------|
| | Unpaid Concourse |
| | Station Facilities |
| | Services & BOH |
| | OSD Hotel |
| | OSD Commercial Office |
| | OSD Residential Apartments |

architectus™
 Architectus Sydney
 Level 18 MLC Centre
 19 Martin Place
 Sydney NSW 2000
 T (61 2) 8552 8400
 F (61 2) 9252 8600
 sydney@architectus.com.au
 ABN 90 131 245 684

project

Pitt Street North OSD

drawing

3D Massing References

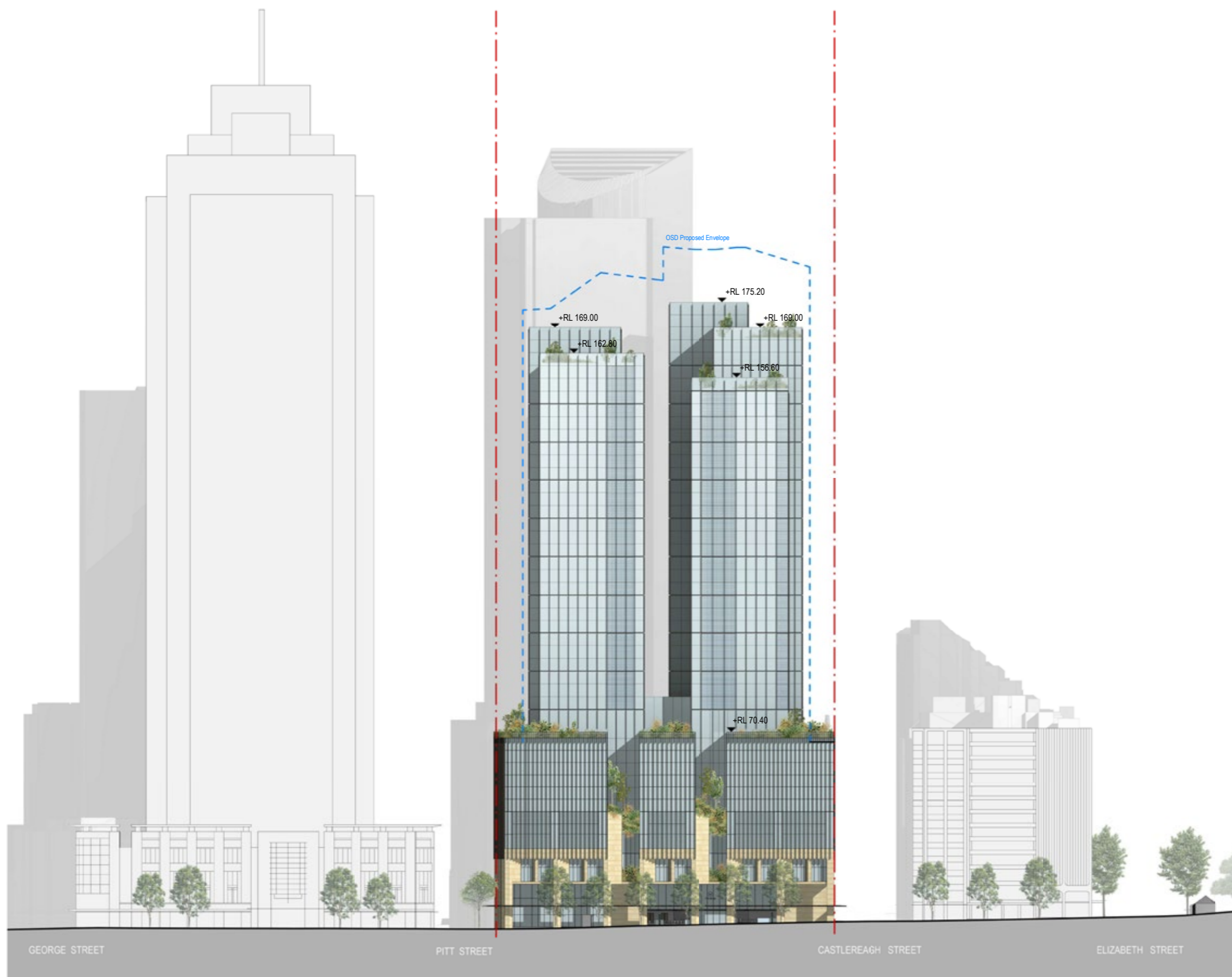
| | | | |
|------------|---------|-------------|-----------------|
| scale | @A1 | drawing no. | |
| drawn | Author | | AR-03-01 |
| checked | Checker | | issue |
| project no | 170493 | | 17 |

Do not scale drawings. Verify all dimensions on site.



| issue | amendment | date |
|-------|--------------------|------------|
| 2 | Consultant Issue | 02.02.2018 |
| 3 | Consultant Issue | 15.02.2018 |
| 4 | Consultant Meeting | 16.02.2018 |
| 5 | Consultant Meeting | 23.02.2018 |
| 6 | Consultant Issue | 08.03.2018 |
| 7 | Consultant Issue | 09.03.2018 |
| 8 | Consultant Issue | 14.03.2018 |
| 9 | Consultant Issue | 15.03.2018 |
| 10 | Consultant Issue | 20.03.2018 |
| 11 | Consultant Issue | 23.03.2018 |
| 12 | Consultant Issue | 23.03.2018 |
| 13 | Consultant Issue | 10.04.2018 |
| 14 | Design Reports | 26.04.2018 |
| 15 | Design Reports | 15.06.2018 |

Note: Development may project beyond the noted permissible envelope area to 6m in accordance with the DCP Weighted Average Setback provisions contained in the SDCP.



project

Pitt Street North OSD

drawing

South Elevation

scale 1 : 500@A1

drawing no.

drawn Author **AR-04-01**

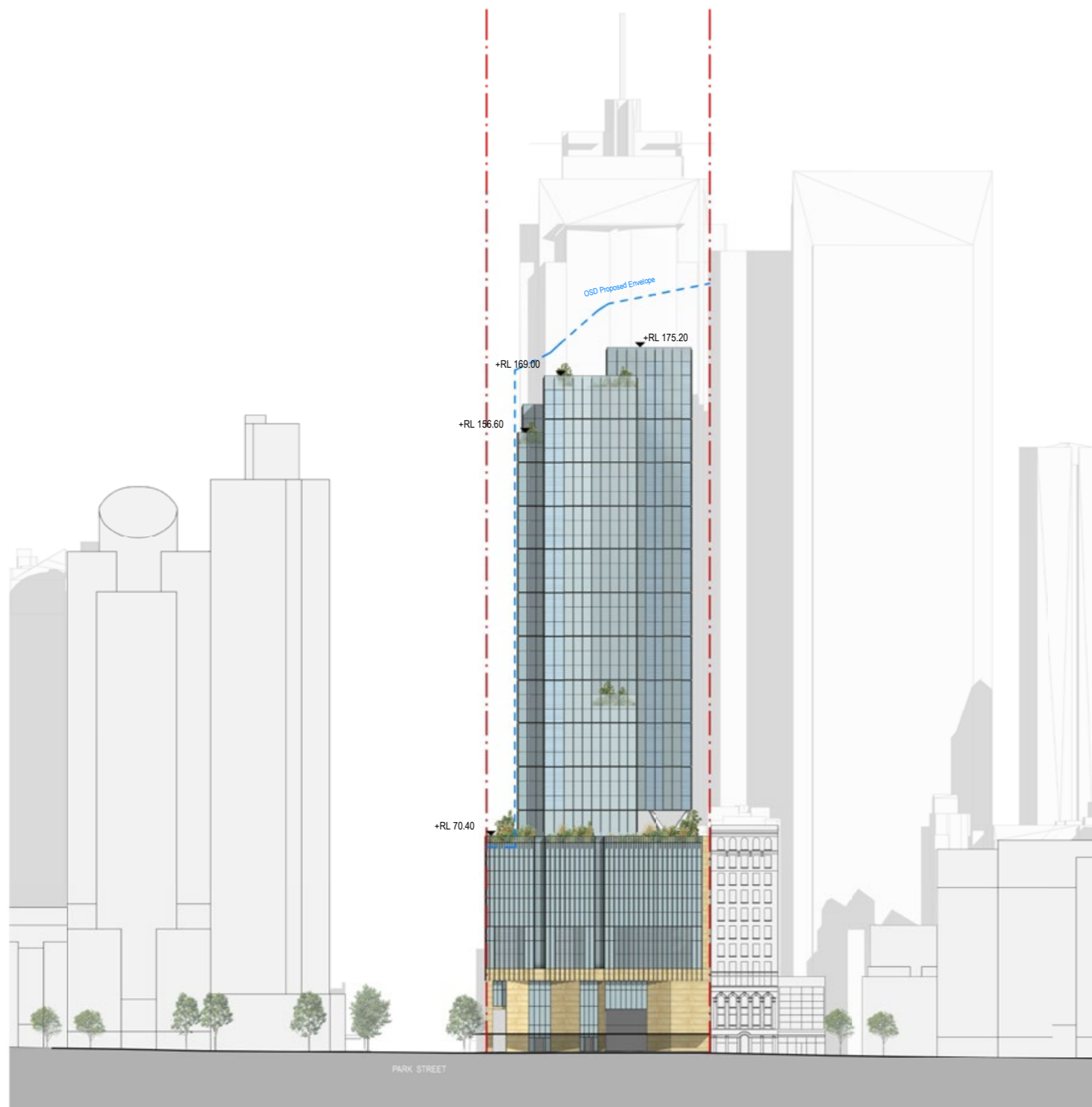
checked Checker issue

project no 170493 **15**



| issue | amendment | date |
|-------|--------------------|------------|
| 2 | Consultant Issue | 02.02.2018 |
| 3 | Consultant Issue | 15.02.2018 |
| 4 | Consultant Meeting | 16.02.2018 |
| 5 | Consultant Meeting | 23.02.2018 |
| 6 | Consultant Issue | 08.03.2018 |
| 7 | Consultant Issue | 09.03.2018 |
| 8 | Consultant Issue | 14.03.2018 |
| 9 | Consultant Issue | 15.03.2018 |
| 10 | Consultant Issue | 20.03.2018 |
| 11 | Consultant Issue | 23.03.2018 |
| 12 | Consultant Issue | 29.03.2018 |
| 13 | Consultant Issue | 10.04.2018 |
| 14 | Design Reports | 26.04.2018 |
| 15 | Design Reports | 15.06.2018 |

Note: Development may project beyond the noted permissible envelope area to 6m in accordance with the DCP Weighted Average Setback provisions contained in the SDCP.



architectus™

Architectus Sydney
Level 18 MLC Centre
19 Martin Place
Sydney NSW 2000
T (61 2) 8252 8400
F (61 2) 9252 8500
sydney@architectus.com.au
ABN 90 131 245 684

project

Pitt Street North OSD

drawing

East Elevation

scale 1 : 500@A1

drawing no.

drawn Author

AR-04-02

checked Checker

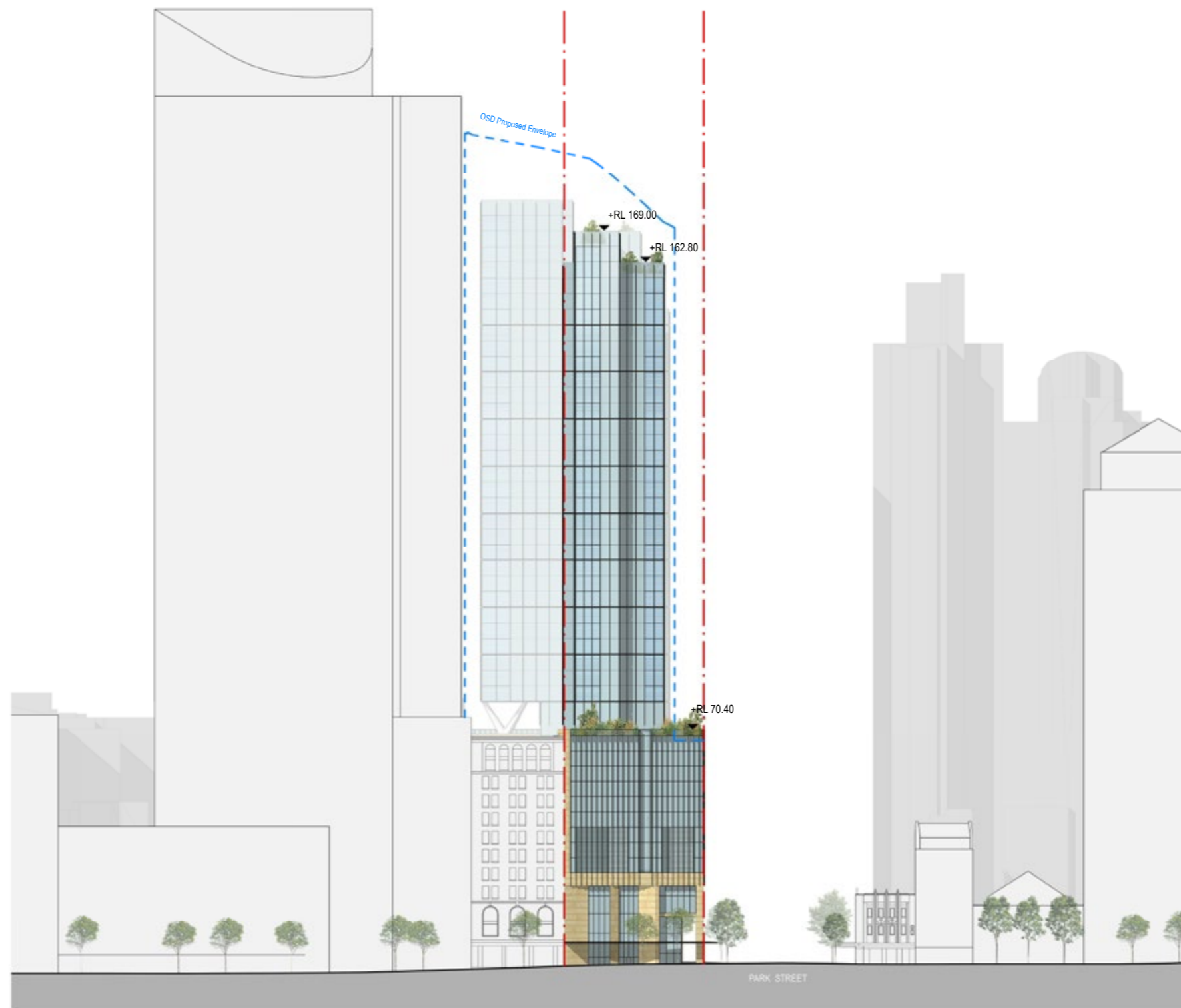
issue

project no 170493

15

| | | |
|----|--------------------|------------|
| 3 | Consultant Issue | 15.02.2018 |
| 4 | Consultant Meeting | 16.02.2018 |
| 5 | Consultant Meeting | 23.02.2018 |
| 6 | Consultant Issue | 08.03.2018 |
| 7 | Consultant Issue | 09.03.2018 |
| 8 | Consultant Issue | 14.03.2018 |
| 9 | Consultant Issue | 15.03.2018 |
| 10 | Consultant Issue | 20.03.2018 |
| 11 | Consultant Issue | 23.03.2018 |
| 12 | Consultant Issue | 29.03.2018 |
| 13 | Consultant Issue | 10.04.2018 |
| 14 | Design Reports | 26.04.2018 |
| 15 | Design Reports | 15.06.2018 |

Note: Development may project beyond the noted permissible envelope area to 6m in accordance with the DCP Weighted Average Setback provisions contained in the SDCP.



architectus™

Architectus Sydney
 Level 18 MLC Centre
 19 Martin Place
 Sydney NSW 2000
 T (61 2) 8552 8400
 F (61 2) 9252 8600
 sydney@architectus.com.au
 ABN 90 131 245 684

project

Pitt Street North OSD

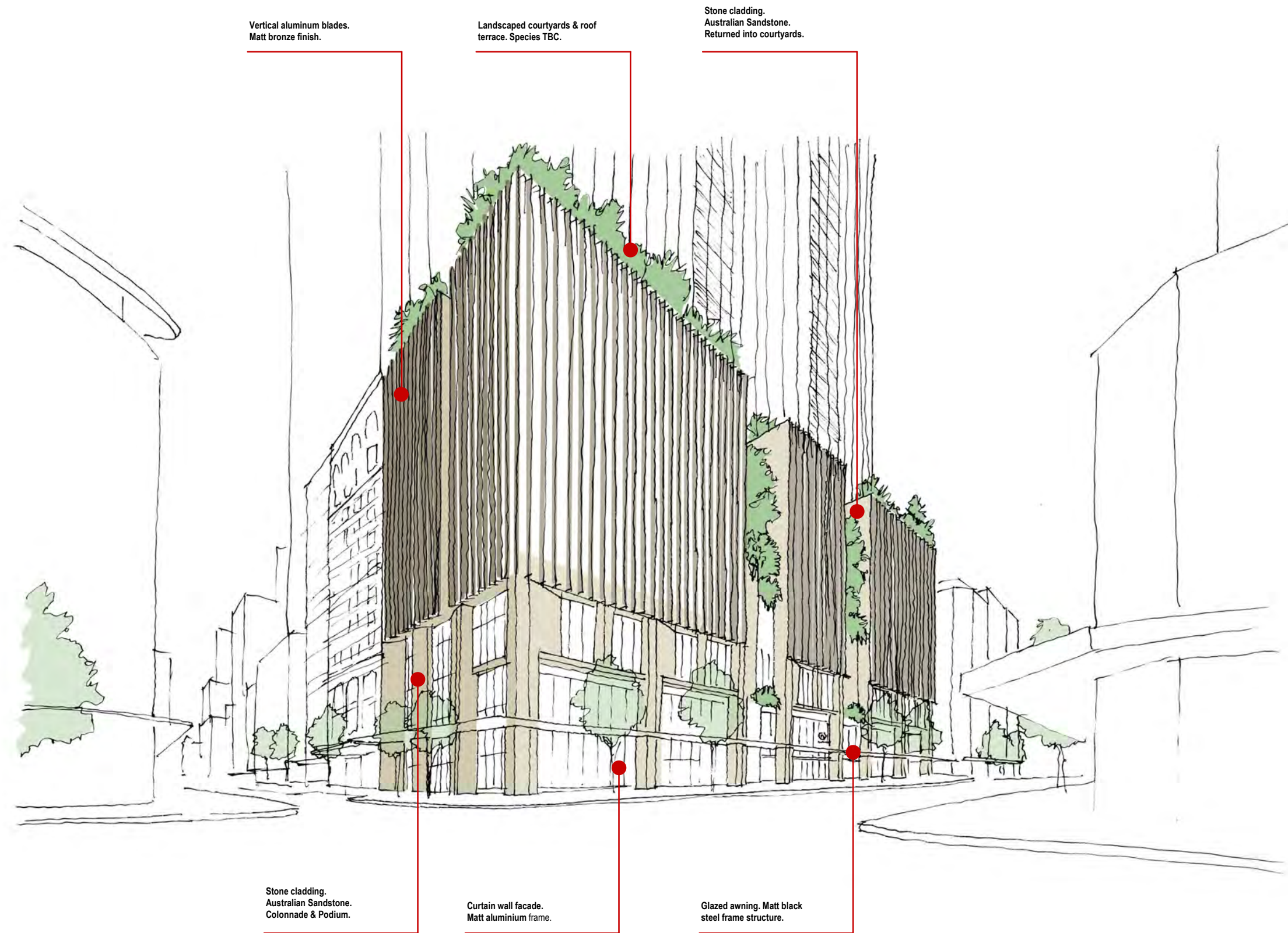
drawing



| issue | amendment | date |
|-------|------------------|------------|
| 1 | Consultant Issue | 13.03.2018 |
| | | |
| | | |
| | | |
| | | |
| | | |
| | | |
| | | |
| | | |
| | | |

Notes

- Issued For Planning Submission Consultant Inputs.



Vertical aluminum blades.
Matt bronze finish.

Landscaped courtyards & roof terrace. Species TBC.

Stone cladding.
Australian Sandstone.
Returned into courtyards.

Stone cladding.
Australian Sandstone.
Colonnade & Podium.

Curtain wall facade.
Matt aluminium frame.

Glazed awning. Matt black steel frame structure.

PRELIMINARY

architectus™

Architectus Sydney
Level 18 MLC Centre
19 Martin Place
Sydney NSW 2000
T (61 2) 8252 8400
F (61 2) 8252 8600
sydney@architectus.com.au
ABN 90 131 245 684

project

Pitt Street North OSD

drawing

Podium Material References

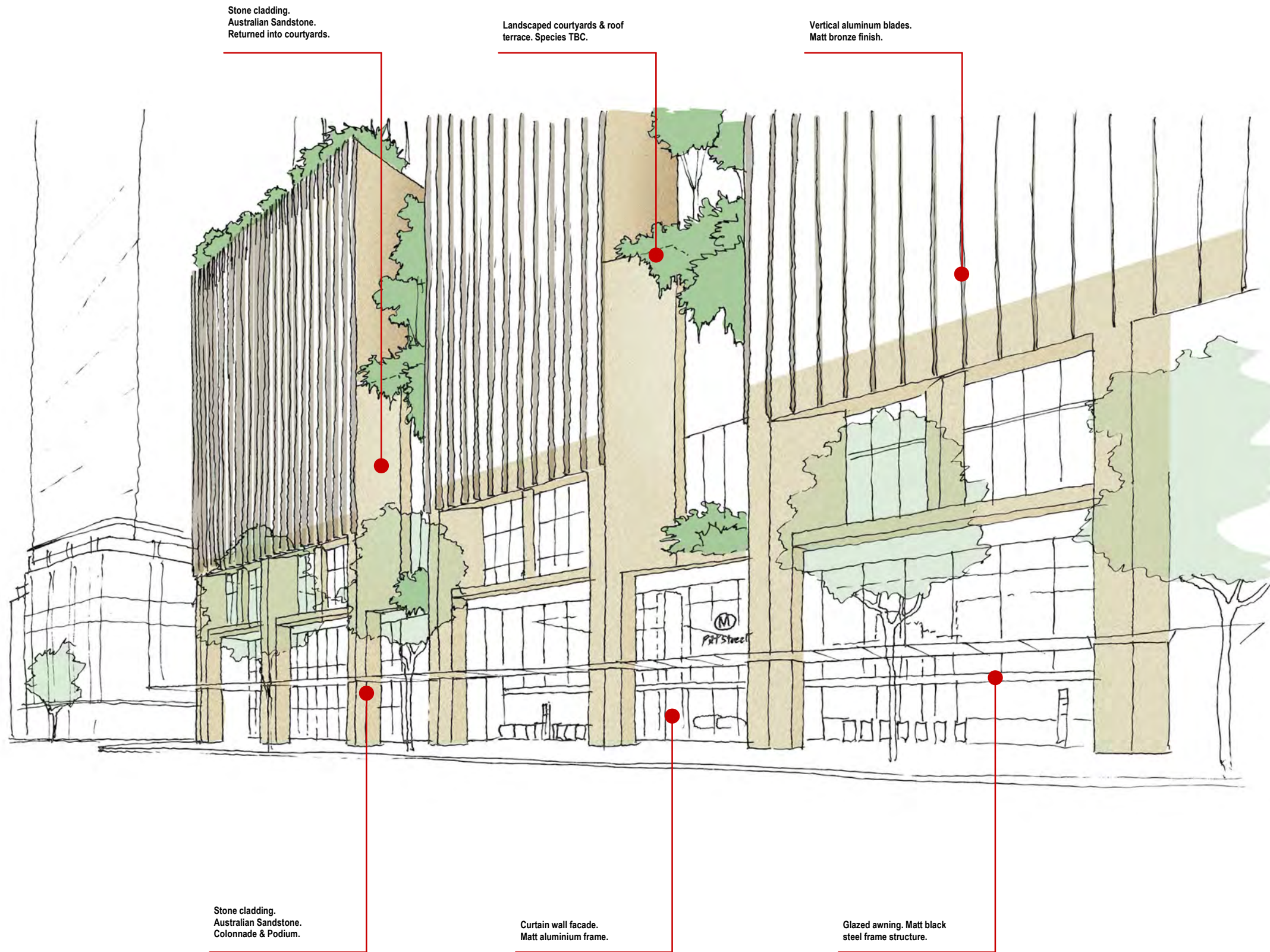
| scale | author | drawing no. |
|------------|---------|-------------|
| @A1 | Author | AR-04-13 |
| checked | checker | issue |
| | | |
| project no | | |
| 170493 | | 1 |



| issue | amendment | date |
|-------|------------------|------------|
| 1 | Consultant Issue | 13.03.2018 |
| | | |
| | | |
| | | |
| | | |
| | | |
| | | |
| | | |
| | | |
| | | |

Notes

- Issued For Planning Submission Consultant Inputs.



PRELIMINARY

architectus™

Architectus Sydney
Level 18 MLC Centre
19 Martin Place
Sydney NSW 2000
T (61 2) 8252 8400
F (61 2) 8252 8600
sydney@architectus.com.au
ABN 90 131 245 684

project

Pitt Street North OSD

drawing

Podium Material References

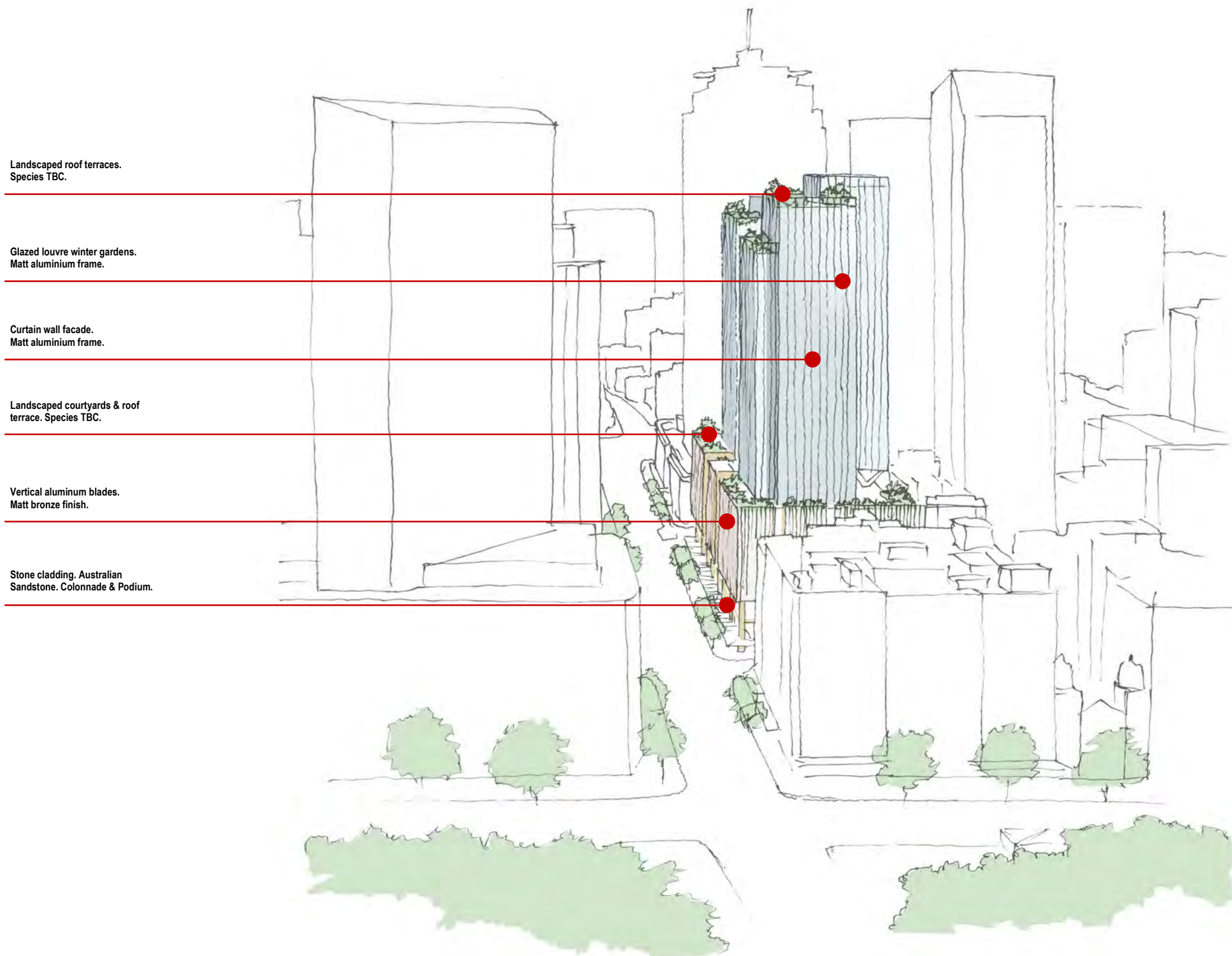
| scale | drawing no. |
|------------|-------------|
| @A1 | AR-04-14 |
| drawn | Author |
| | |
| checked | Checker |
| | |
| project no | issue |
| 170493 | 1 |



| issue | amendment | date |
|-------|------------------|------------|
| 1 | Consultant Issue | 13.03.2018 |
| | | |
| | | |
| | | |
| | | |
| | | |
| | | |
| | | |
| | | |
| | | |

Notes

- Issued For Planning Submission Consultant Inputs.



PRELIMINARY

architectus™

Architectus Sydney
Level 18 MLC Centre
19 Martin Place
Sydney NSW 2000
T (61 2) 8252 8400
F (61 2) 8252 8600
sydney@architectus.com.au
ABN 90 131 245 684

project

Pitt Street North OSD

drawing

Tower Material References

| scale | author | drawing no. |
|------------|---------|-------------|
| @A1 | Author | AR-04-15 |
| checked | checker | issue |
| | | |
| project no | 170493 | 1 |