

Appendix G

Report 610.14718R1

Construction Vibration Predictions



SLR

2 LINCOLN STREET
LANE COVE
NSW 2066
AUSTRALIA
T: +61 2 9427 8100
F: +61 2 0801
www.slrconsulting.com

The content contained within this document may be based on third party data. SLR Consulting Australia Pty Ltd does not guarantee the accuracy of such information.

Project No.:	610.14218
Date:	04/04/2015
Drawn by:	MR
Scale:	1:4,000
Sheet Size:	A4
Projection:	GDA 1994 MGA Zone 56

Legend

- One Storey Receiver
- >One Storey Receiver
- Shaft Locations

Exceedances

- No Exceedance
- Shaft Locations

0 20 40 60 80 m

Legend

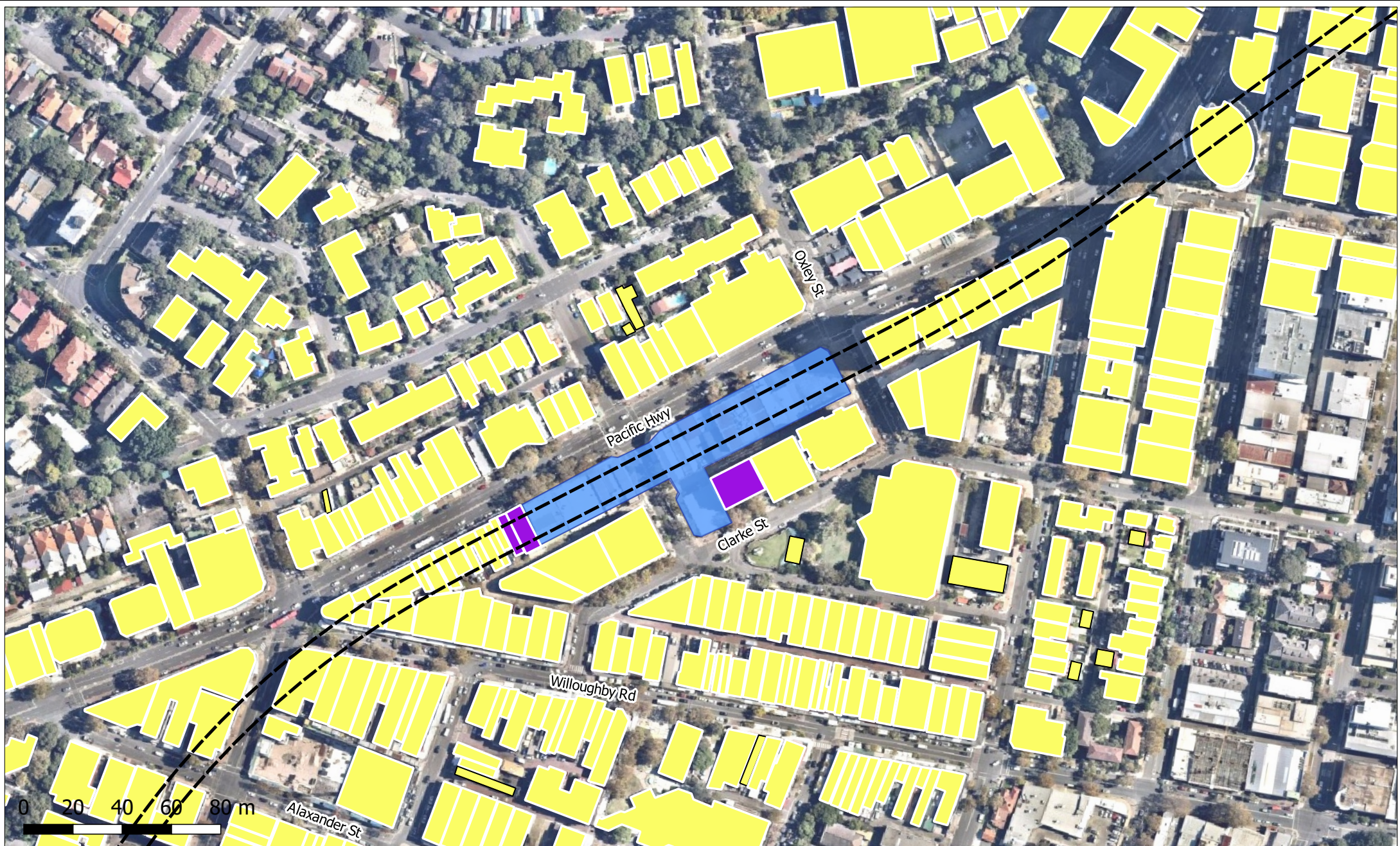
- Shaft Locations
- One Storey Receiver
- >One Storey Receiver

Exceedances

JACOBS BARONS BRUNNEN LIMITED

Sydney Metro Chatswood to Sydenham

Cosmetic Damage Vibration Assessment
Group 1 - The Noise Assessment
Exceedance of Screening Criteria
Daytime
Barangaroo Station & Argyle Street
Chatswood



SLR

2 LINCOLN STREET
LANE COVE
NSW 2066
AUSTRALIA
T: +61 2 9427 8100
F: +61 2 0801
www.slrc consulting.com

The content contained within this document may be based on third party data.
SLR Consulting Australia Pty Ltd does not guarantee the accuracy of such information.

Project No.:	610.14218
Date:	04/04/2015
Drawn by:	MR
Scale:	1:3,500
Sheet Size:	A4
Projection:	GDA 1994 MGA Zone 56

Legend

- One Storey Receiver
- >One Storey Receiver
- Shaft Locations

Exceedances

- No Exceedance

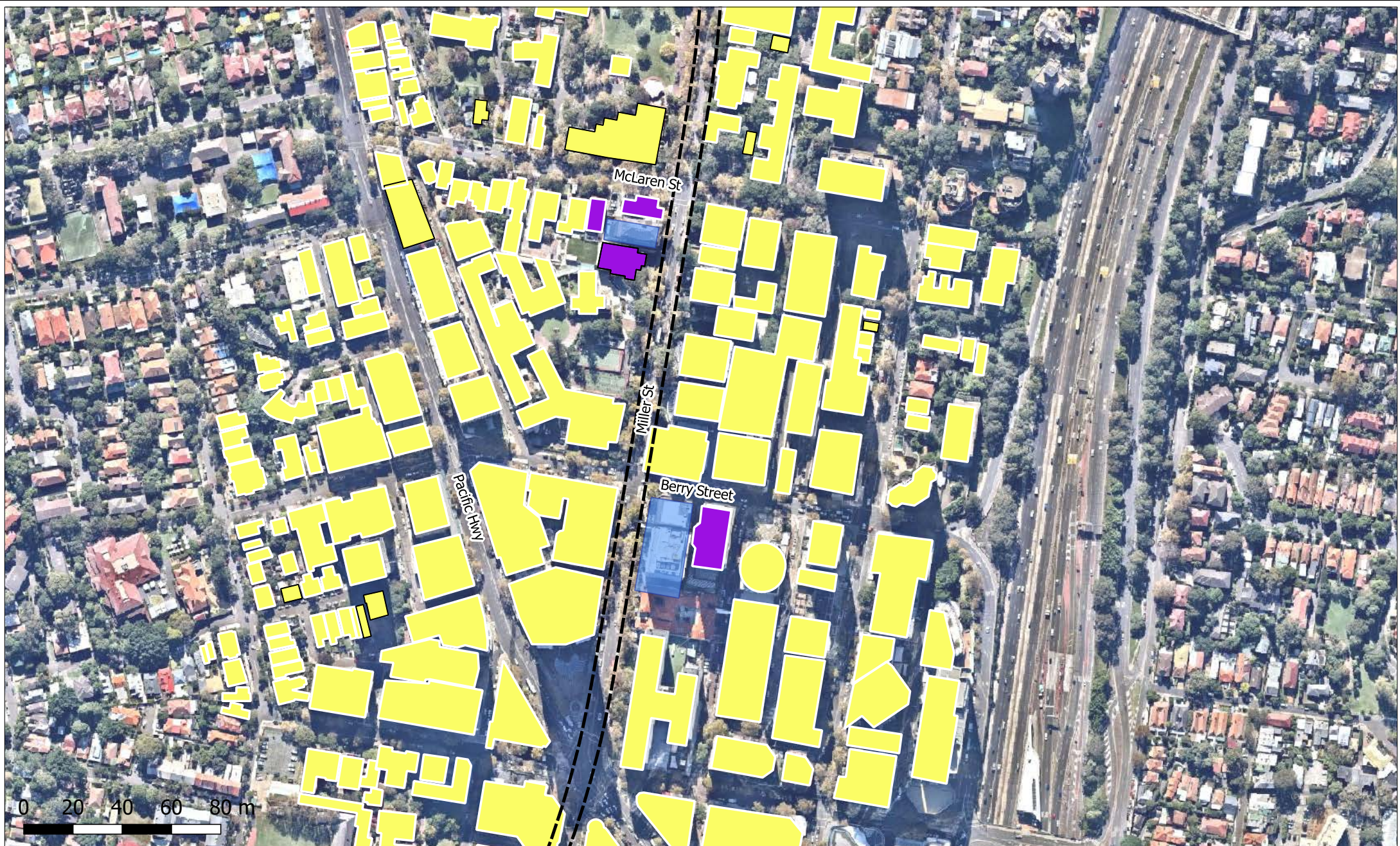
0 20 40 60 80 m

Legend

- Shaft Locations
- One Storey Receiver
- >One Storey Receiver

Exceedances



JACOBS BARINGS GROUP Limited
Sydney Metro Chatswood to Sydenham
Cosmetic Damage Vibration Assessment
Ground Borehole Resonance
Exceedance of Screening Criteria
Daytime
Crows Nest
Barangaroo Station & Argyle Street

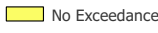

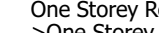





 2 LINCOLN STREET
 LANE COVE
 NSW 2066
 AUSTRALIA
 T: +61 2 9427 8100
 F: +61 2 0801
 www.slrconsulting.com

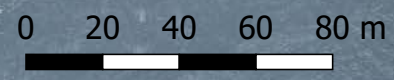
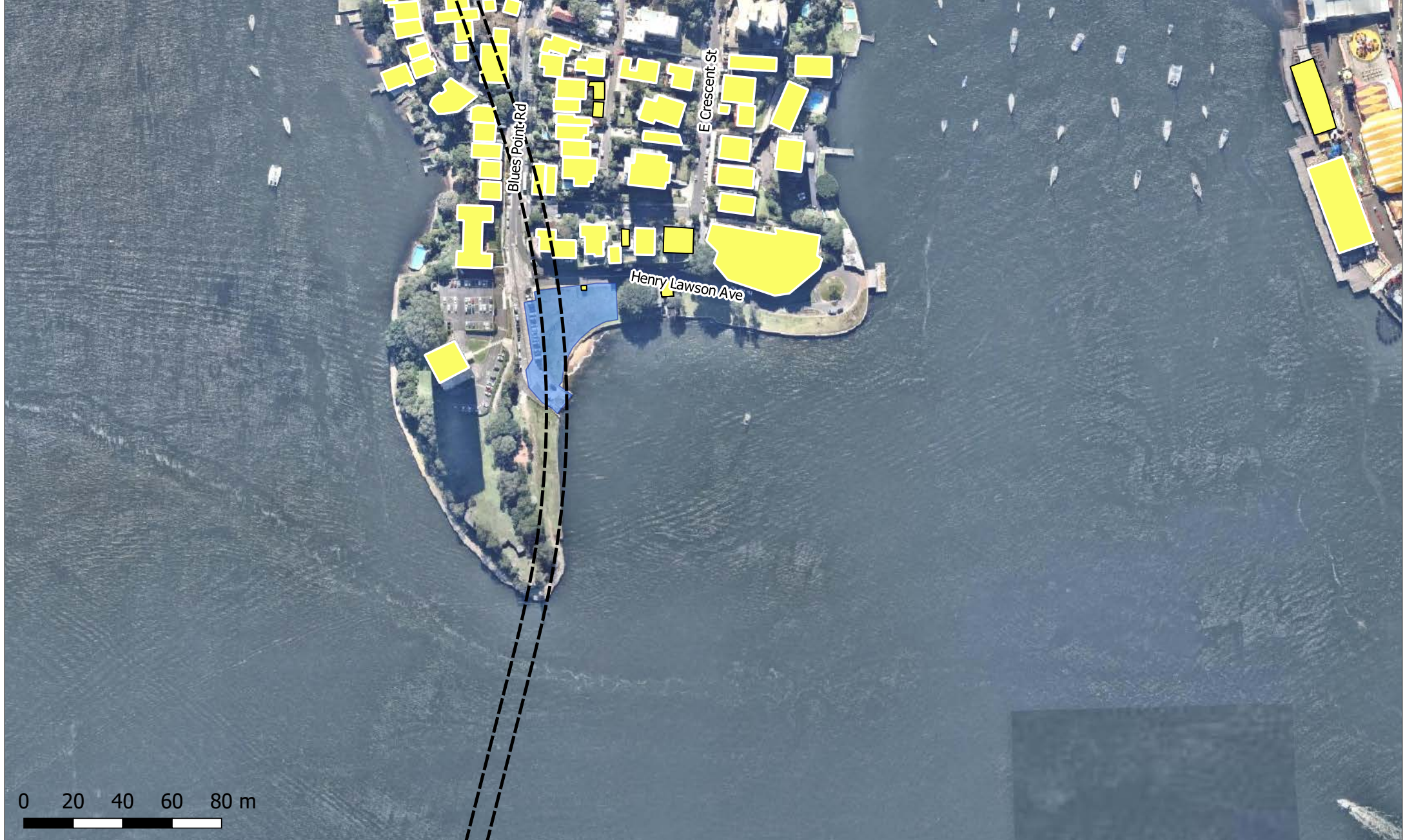
Project No.: 610.14218
 Date: 04/04/2015
 Drawn by: MR
 Scale: 1:4,500
 Sheet Size: A4
 Projection: GDA 1994 MGA Zone 56

Legend
 One Storey Receiver
 >One Storey Receiver

Exceedances Legend
 No Exceedance
 Shaft Locations
 One Storey Receiver
 >One Storey Receiver



Jacobs
 BARONS BRUNNEN LIMITED
Sydney Metro Chatswood to Sydenham
 Cosmetic Damage Vibration Assessment
 for the Proposed Sydney Metro
 Exceedance of Screening Criteria
 Victoria Cross
 Barangaroo Station & Argyle Street

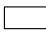

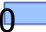



 2 LINCOLN STREET
 LANE COVE
 NSW 2066
 AUSTRALIA
 T: +61 2 9427 8100
 F: +61 2 0801
 www.slrconsulting.com

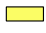
The content contained within this document may be based on third party data.
 SLR Consulting Australia Pty Ltd does not guarantee the accuracy of such information.

Project No.:	610.14218
Date:	27/04/2006
Drawn by:	MR
Scale:	1:4,000
Sheet Size:	A4
Projection:	GDA 1994 MGA Zone 56

Legend




-  One Storey Receiver
-  >One Storey Receiver
-  Shaft Locations

Exceedances

-  No Exceedance

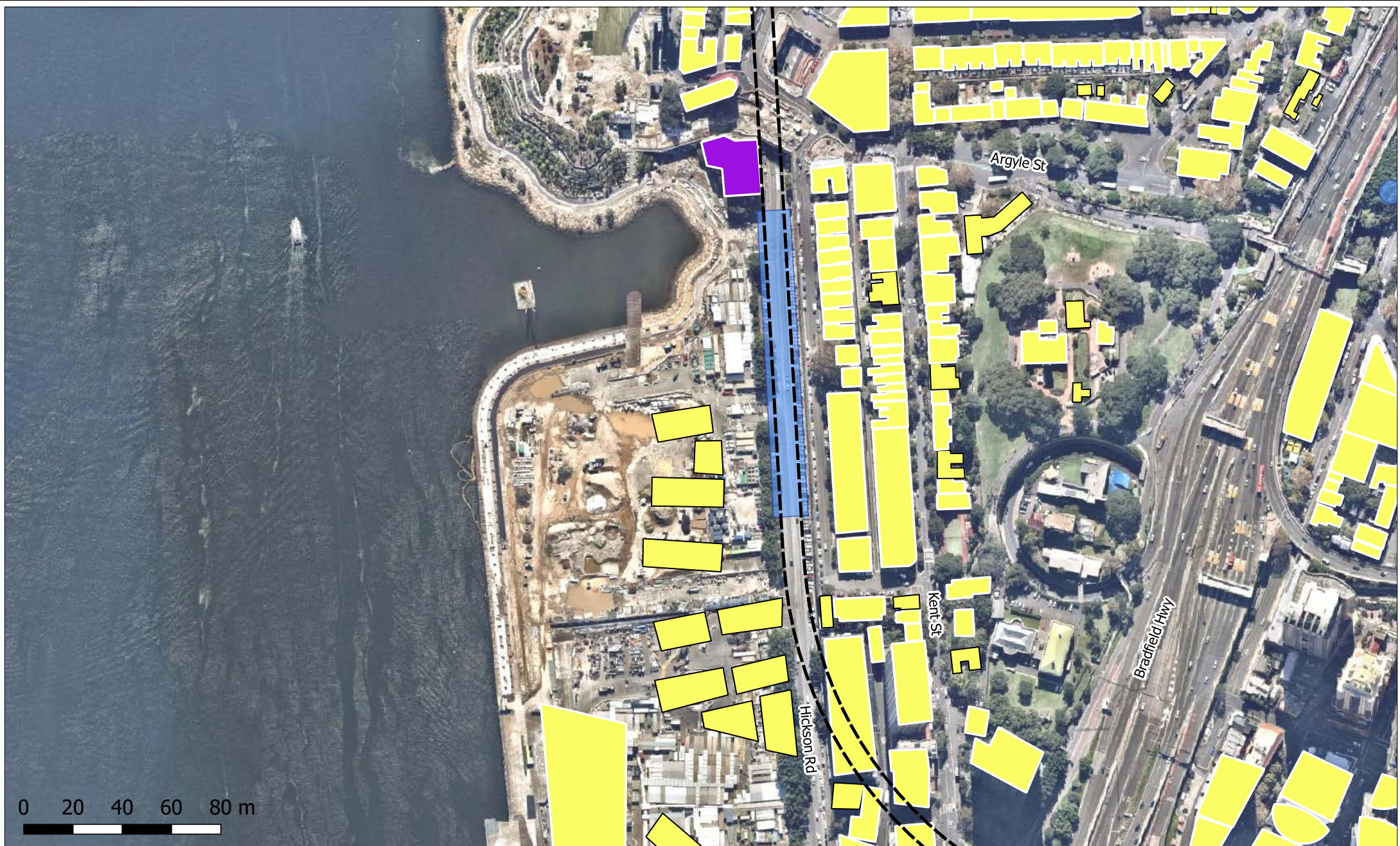
0 20 40 60 80 m

Legend

-  Shaft Locations
-  One Storey Receiver
-  >One Storey Receiver

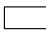

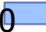
Exceedances

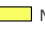

Jacobs
 BARONS BRUNNEN LIMITED
 Sydney Metro Chatswood to Sydenham
 Cosmetic Damage Vibration Assessment
 Ground-borne Noise Assessment
 Exceedance of Screening Criteria
 Daytime
 Blues Point
 Barangaroo Station & Argyle Street


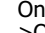



 2 LINCOLN STREET
 LANE COVE
 NSW 2066
 AUSTRALIA
 T: +61 2 9427 8100
 F: +61 2 0801
 www.slrconsulting.com

Project No.: 610.14218
 Date: 27/01/2015
 Drawn by: MR
 Scale: 1:4,000
 Sheet Size: A4
 Projection: GDA 1994 MGA Zone 56

Legend
 One Storey Receiver
 >One Storey Receiver
 Shaft Locations

Exceedances
 No Exceedance
 Shaft Locations
 0 20 40 60 80 m

Legend
 One Storey Receiver
 >One Storey Receiver

Exceedances

Jacobs
 BARBONS (BRUNNICK, NYD) Limited
Sydney Metro Chatswood to Sydenham
 Construction Noise & Vibration Assessment
 Exceedance & Screening Criteria
 Barangaroo Station & Argyle Street







 2 LINCOLN STREET
 LANE COVE
 NSW 2066
 AUSTRALIA
 T: +61 2 9427 8100
 F: +61 2 0801
 www.slrconsulting.com

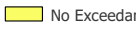
The content contained within this document may be based on third party data.
 SLR Consulting Australia Pty Ltd does not guarantee the accuracy of such information.

Project No.:	610.14218
Date:	04/04/2015
Drawn by:	MR
Scale:	1:5,000
Sheet Size:	A4
Projection:	GDA 1994 MGA Zone 56

Legend


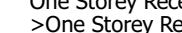

-  One Storey Receiver
-  >One Storey Receiver
-  Shaft Locations

Exceedances

-  No Exceedance

0 20 40 60 80 m

Legend

-  Shaft Locations
-  One Storey Receiver
-  >One Storey Receiver

Exceedances

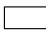

Jacobs
 BARONS BRUNNEN LIMITED
 Sydney Metro Chatswood to Sydenham
 Groundwater Noise Assessment
 Exceedance Engineering Criteria
 Barangaroo Station & Argyle Street

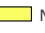




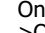


 2 LINCOLN STREET
 LANE COVE
 NSW 2066
 AUSTRALIA
 T: +61 2 9427 8100
 F: +61 2 0801
 www.slrconsulting.com

The content contained within this document may be based on third party data.
 SLR Consulting Australia Pty Ltd does not guarantee the accuracy of such information.

Project No.:	610.14218
Date:	04/04/2015
Drawn by:	MR
Scale:	1:5,000
Sheet Size:	A4
Projection:	GDA 1994 MGA Zone 56

Legend
 One Storey Receiver
 >One Storey Receiver

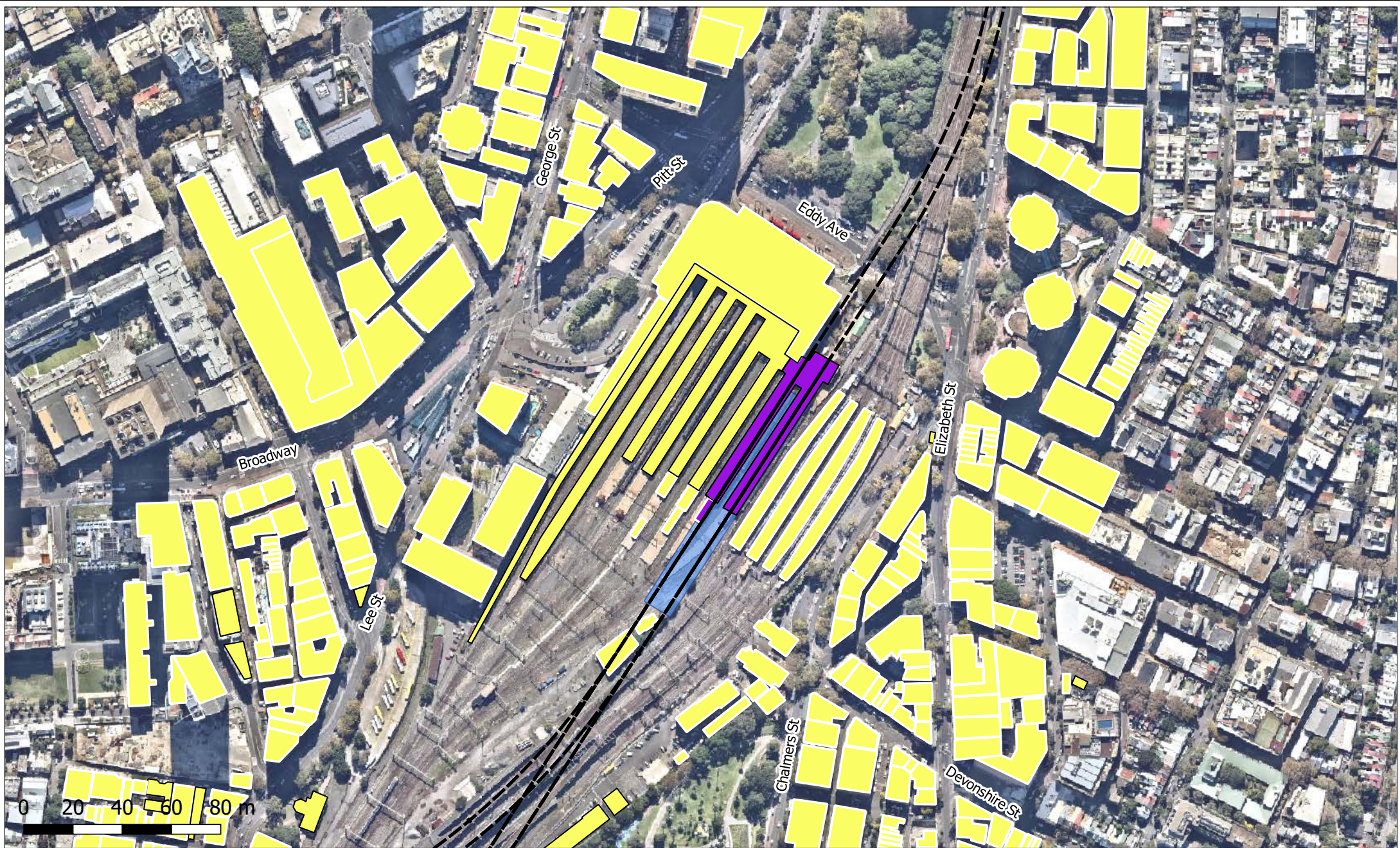
Exceedances
 No Exceedance
 Shaft Locations

Legend
 Shaft Locations
 One Storey Receiver
 >One Storey Receiver

Exceedances



Jacobs
 BARBARA BRINKLEY LIMITED
Sydney Metro Chatswood to Sydenham
 Construction Noise & Vibration Assessment
 Exceedance Engineering Criteria
 Barangaroo Station & Argyle Street




 2 LINCOLN STREET
 LANE COVE
 NSW 2066
 AUSTRALIA
 T: +61 2 9427 8100
 F: +61 2 0801
 www.slrconsulting.com

The content contained within this document may be based on third party data.
 SLR Consulting Australia Pty Ltd does not guarantee the accuracy of such information.

Project No.:	610.14218
Date:	04/04/2015
Drawn by:	MR
Scale:	1:5,000
Sheet Size:	A4
Projection:	GDA 1994 MGA Zone 56

Legend
 One Storey Receiver
 >One Storey Receiver
 Shaft Locations

Exceedances
 No Exceedance
 0 20 40 60 80 m

Legend
 Shaft Locations
 One Storey Receiver
 >One Storey Receiver

Exceedances

Jacobs
 BARBARA BRINKERHOFF
 Director
 Sydney Metro Chatswood to Sydenham
 Cost and Damage Nil at Risk Assessment
 Exceedance Engineering Criteria
 Barangaroo Central Station







 2 LINCOLN STREET
 LANE COVE
 NSW 2066
 AUSTRALIA
 T: +61 2 9427 8100
 F: +61 2 0801
 www.slrconsulting.com

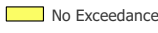


The content contained within this document may be based on third party data.
 SLR Consulting Australia Pty Ltd does not guarantee the accuracy of such information.

Project No.:	610.14218
Date:	04/04/2015
Drawn by:	MR
Scale:	1:3,500
Sheet Size:	A4
Projection:	GDA 1994 MGA Zone 56

Legend

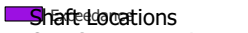


-  One Storey Receiver
-  >One Storey Receiver
-  Shaft Locations

Exceedances

 No Exceedance
 One Storey Receiver
 >One Storey Receiver

0 20 40 60 80 m

Legend

-  Shaft Locations
-  One Storey Receiver
-  >One Storey Receiver

Exceedances




Jacobs
 BARONS BRUNNICK LIMITED
 Sydney Metro Chatswood to Sydenham
 Cost Ground Noise and Vibration Assessment
 Exceedance Engineering Criteria
 Barangaroo Station to Argyle Street

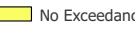








 2 LINCOLN STREET
 LANE COVE
 NSW 2066
 AUSTRALIA
 T: +61 2 9427 8100
 F: +61 2 0801
 www.slrconsulting.com

Project No.: 610.14218
 Date: 04/04/2015
 Drawn by: MR
 Scale: 1:6,762
 Sheet Size: A4
 Projection: GDA 1994 MGA Zone 56

Legend
 One Storey Receiver
 >One Storey Receiver
 Station Locations

Exceedances
 No Exceedance
 0 20 40 60 80 m

Legend
 Shaft Locations
 One Storey Receiver
 >One Storey Receiver

Exceedances

Jacobs
 BARONS BRUNNICK LIMITED
Sydney Metro Chatswood to Sydenham
 Cost and Damage Nil at Assessment
 Exceedance Engineering Criteria
 Barangaroo Station & Argyle Street