

# Appendix D5

Report 610.14718R1  
Construction Noise Predictions  
Tunnelling/Excavation



2 LINCOLN STREET  
LAKE COVE  
NSW 2066  
AUSTRALIA  
T: +61 2 9427 8100  
F: +61 2 0801  
www.slrconsulting.com

Project No.: 610.14718  
Date: 08/12/2015  
Drawn by: HRR  
Scale: 1:5,000  
Sheet Size: @A1  
Projection: GDA 1994 MGA Zone 56



--- Receiver Area    Construction Area    Acquired Building

**Worst-case Exceedance of NML**

0 dB - 10 dB    10 dB - 20 dB    > 20 dB

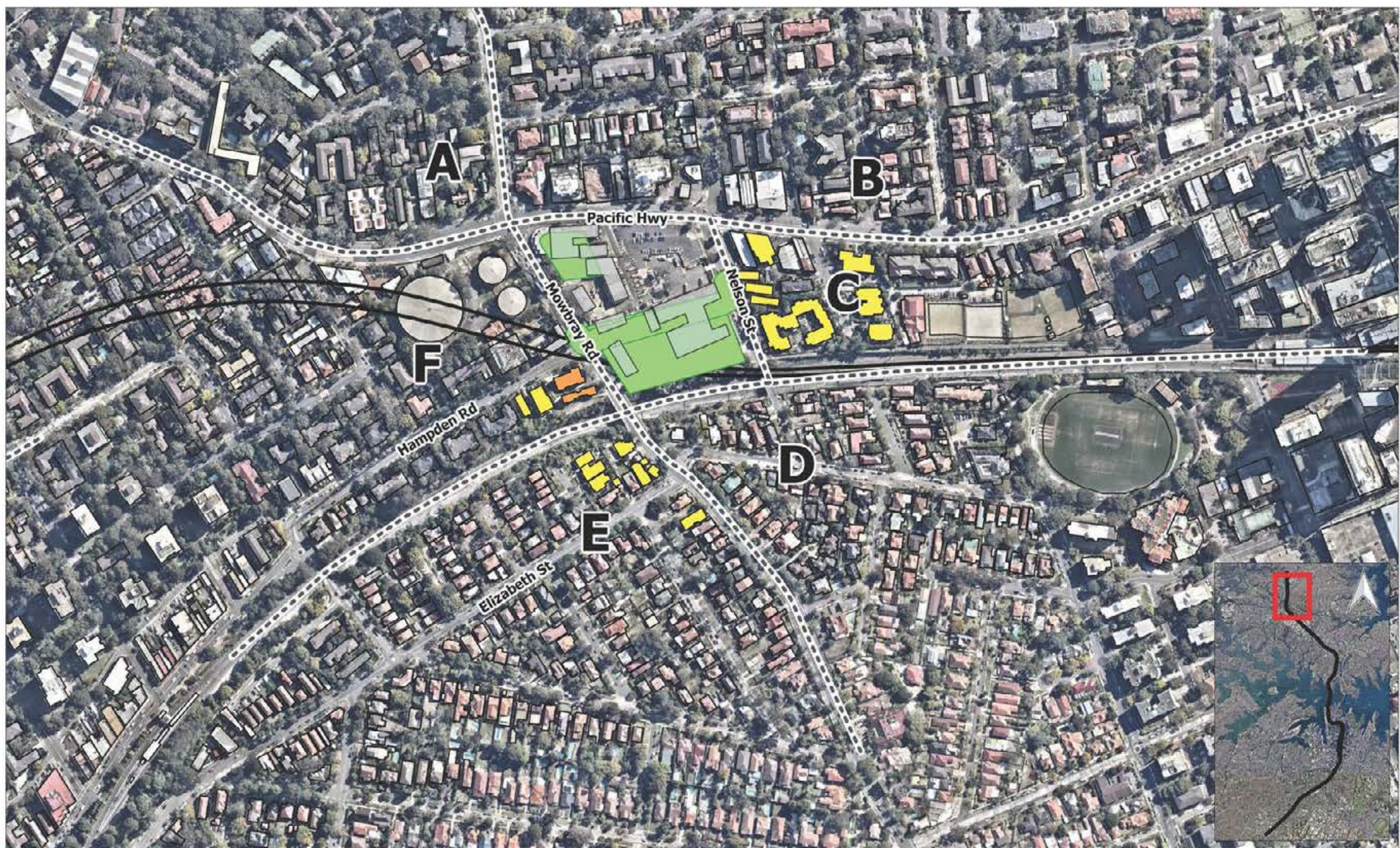


Jacobs Group (Australia) Pty Limited

Sydney Metro Chatswood to Sydenham

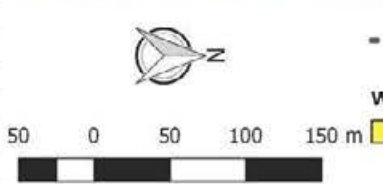
Construction Noise Predictions  
Worst-case NML Exceedance  
Tunnelling with Shed – Daytime

The content contained within this document may be based on third party data.  
SLR Consulting Australia Pty Ltd does not guarantee the accuracy of such information.



**SLR**  
 2 LINCOLN STREET  
 LAKE COVE  
 NSW 2066  
 AUSTRALIA  
 T: +61 2 9427 8100  
 F: +61 2 0801  
 www.slrc consulting.com

Project No.: 610.14718  
 Date: 08/12/2015  
 Drawn by: HR  
 Scale: 1:5,000  
 Sheet Size: @A4  
 Projection: GDA 1994 MGA Zone 56



--- Receiver Area    Construction Area    Acquired Building

**Worst-case Exceedance of NML**

0 dB - 10 dB    10 dB - 20 dB    > 20 dB

Jacobs Group (Australia) Pty Limited  
 Sydney Metro Chatswood to Sydenham

**Construction Noise Predictions  
 Worst-case NML Exceedance  
 Tunnelling with Shed – Day OOH**

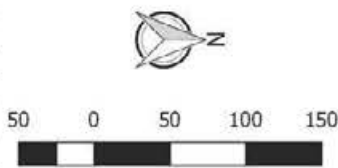
The content contained within this document may be based on third party data. SLR Consulting Australia Pty Ltd does not guarantee the accuracy of such information.



**SLR** 

2 LINCOLN STREET  
LANE COVE  
NSW 2066  
AUSTRALIA  
T: +61 2 9427 8100  
F: +61 2 0801  
www.slrconsulting.com

Project No.: 610.14718  
Date: 08/12/2015  
Drawn by: HR  
Scale: 1:5,000  
Sheet Size: @A4  
Projection: GDA 1994 MGA Zone 56



--- Receiver Area    Construction Area    Acquired Building

**Worst-case Exceedance of NML**

0 dB - 10 dB    10 dB - 20 dB    > 20 dB

Jacobs Group (Australia) Pty Limited  
Sydney Metro Chatswood to Sydenham

**Construction Noise Predictions  
Worst-case NML Exceedance  
Tunnelling with Shed – Evening**

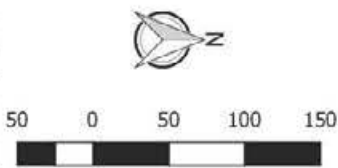
The content contained within this document may be based on third party data. SLR Consulting Australia Pty Ltd does not guarantee the accuracy of such information.



**SLR** 

2 LINCOLN STREET  
LAJIE COVE  
NSW 2066  
AUSTRALIA  
T: +61 2 9427 8100  
F: +61 2 0801  
www.slronline.com

Project No.: 510.14718  
Date: 08/12/2015  
Drawn by: MR  
Scale: 1:5,000  
Sheet Size: @A4  
Projection: GDA 1994 MGA Zone 56



--- Receiver Area    Construction Area    Acquired Building

**Worst-case Exceedance of NML**

0 dB - 10 dB    10 dB - 20 dB    > 20 dB

Jacobs Group (Australia) Pty Limited  
Sydney Metro Chatswood to Sydenham

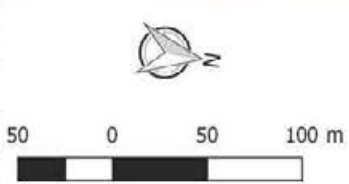
**Construction Noise Predictions  
Worst-case NML Exceedance  
Tunnelling with Shed – Night**

The content contained within this document may be based on third party data. SLR Consulting Australia Pty Ltd does not guarantee the accuracy of such information.



**SLR**  
 2 LINCOLN STREET  
 LAKE COVE  
 NSW 2066  
 AUSTRALIA  
 T: +61 2 9427 8100  
 F: +61 2 0801  
 www.slronline.com

Project No.: 610.14718  
 Date: 08/12/2015  
 Drawn by: HRR  
 Scale: 1:14,000  
 Sheet Size: @A1  
 Projection: GDA 1994 MGA Zone 56



--- Receiver Area    Construction Area    Acquired Building

**Worst-case Exceedance of NML**

0 dB - 10 dB    10 dB - 20 dB    > 20 dB

Jacobs Group (Australia) Pty Limited  
 Sydney Metro Chatswood to Sydenham  
 Construction Noise Predictions  
 Worst-case NML Exceedance  
 Excavation – Daytime

The content contained within this document may be based on third party data. SLR Consulting Australia Pty Ltd does not guarantee the accuracy of such information.



2 LINCOLN STREET  
LAKE COVE  
NSW 2066  
AUSTRALIA  
T: +61 2 9427 8100  
F: +61 2 0801  
www.slrconsulting.com

Project No.: 610.14718  
Date: 08/12/2015  
Drawn by: MR  
Scale: 1:4,000  
Sheet Size: @A1  
Projection: GDA 1994 MGA Zone 56



--- Receiver Area    Construction Area    Acquired Building

**Worst-case Exceedance of NML**

0 dB - 10 dB    10 dB - 20 dB    > 20 dB

Jacobs Group (Australia) Pty Limited

Sydney Metro Chatswood to Sydenham

Construction Noise Predictions  
Worst-case NML Exceedance  
Excavation with Shed – Daytime

The content contained within this document may be based on third party data. SLR Consulting Australia Pty Ltd does not guarantee the accuracy of such information.



2 LINCOLN STREET  
LAINE COVE  
NSW 2066  
AUSTRALIA  
T: +61 2 9427 8100  
F: +61 2 0801  
www.slronline.com

Project No.:	510.14718
Date:	08/12/2015
Drawn by:	HR
Scale:	1:4,000
Sheet Size:	@A4
Projection:	GDA 1994 MGA Zone 56



--- Receiver Area    ■ Construction Area    ■ Acquired Building

**Worst-case Exceedance of NML**

■ 0 dB - 10 dB    ■ 10 dB - 20 dB    ■ > 20 dB

Jacobs Group (Australia) Pty Limited  
Sydney Metro Chatswood to Sydenham

Construction Noise Predictions  
Worst-case NML Exceedance  
Excavation with Shed – Day OOH

The content contained within this document may be based on third party data. SLR Consulting Australia Pty Ltd does not guarantee the accuracy of such information.





2 LINCOLN STREET  
LANE COVE  
NSW 2066  
AUSTRALIA  
T: +61 2 9127 8100  
F: +61 2 0801  
www.slroonsulting.com

Project No.:	610.14718
Date:	08/12/2015
Drawn by:	MR
Scale:	1:4,000
Sheet Size:	@A4
Projection:	GDA 1991 MGA Zone 56



--- Receiver Area    ■ Construction Area    ■ Acquired Building

**Worst-case Exceedance of NML**

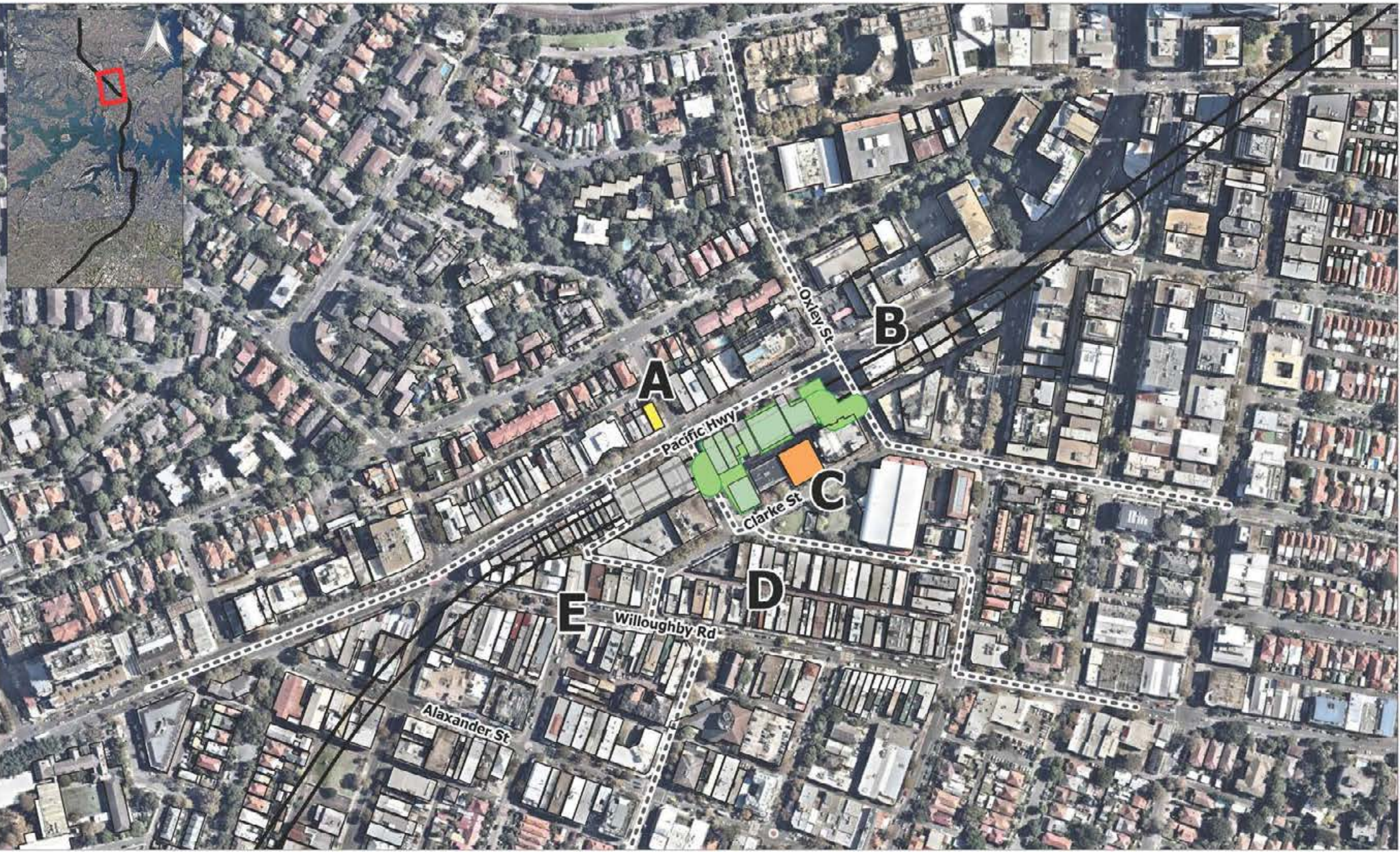
■ 0 dB - 10 dB    ■ 10 dB - 20 dB    ■ > 20 dB

Jacobs Group (Australia) Pty Limited

Sydney Metro Chatswood to Sydenham

Construction Noise Predictions  
Worst-case NML Exceedance  
Excavation with Shed – Evening

The content contained within this document may be based on third party data. SLR Consulting Australia Pty Ltd does not guarantee the accuracy of such information.



2 LINCOLN STREET  
LANE COVE  
NSW 2066  
AUSTRALIA  
T: +61 2 9127 8100  
F: +61 2 0801  
www.slroonsulting.com

Project No.: 610.14718  
Date: 08/12/2015  
Drawn by: MR  
Scale: 1:14,000  
Sheet Size: @A4  
Projection: GDA 1991 MGA Zone 56



--- Receiver Area    ■ Construction Area    ■ Acquired Building

**Worst-case Exceedance of NML**

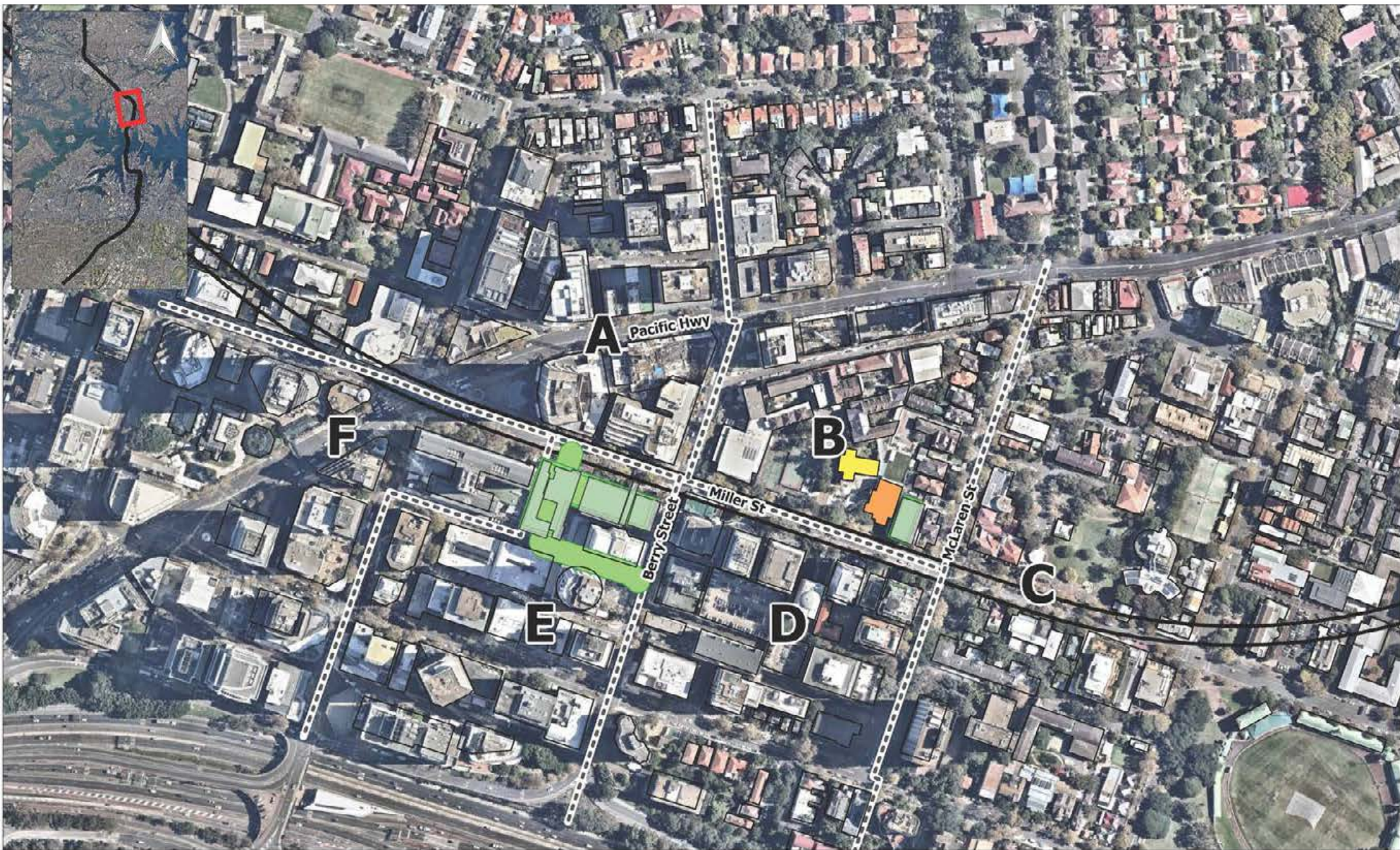
■ 0 dB - 10 dB    ■ 10 dB - 20 dB    ■ > 20 dB

Jacobs Group (Australia) Pty Limited

Sydney Metro Chatswood to Sydenham

Construction Noise Predictions  
Worst-case NML Exceedance  
Excavation with Shed – Night

The content contained within this document may be based on third party data. SLR Consulting Australia Pty Ltd does not guarantee the accuracy of such information.



2 LINCOLN STREET  
LANE COVE  
NSW 2066  
AUSTRALIA  
T: +61 2 9427 8100  
F: +61 2 0801  
www.slrconsulting.com

Project No.: 610.14718  
Date: 08/12/2015  
Drawn by: HRR  
Scale: 1:4,000  
Sheet Size: @A1  
Projection: GDA 1994 MGA Zone 56



--- Receiver Area    Construction Area    Acquired Building

**Worst-case Exceedance of NML**

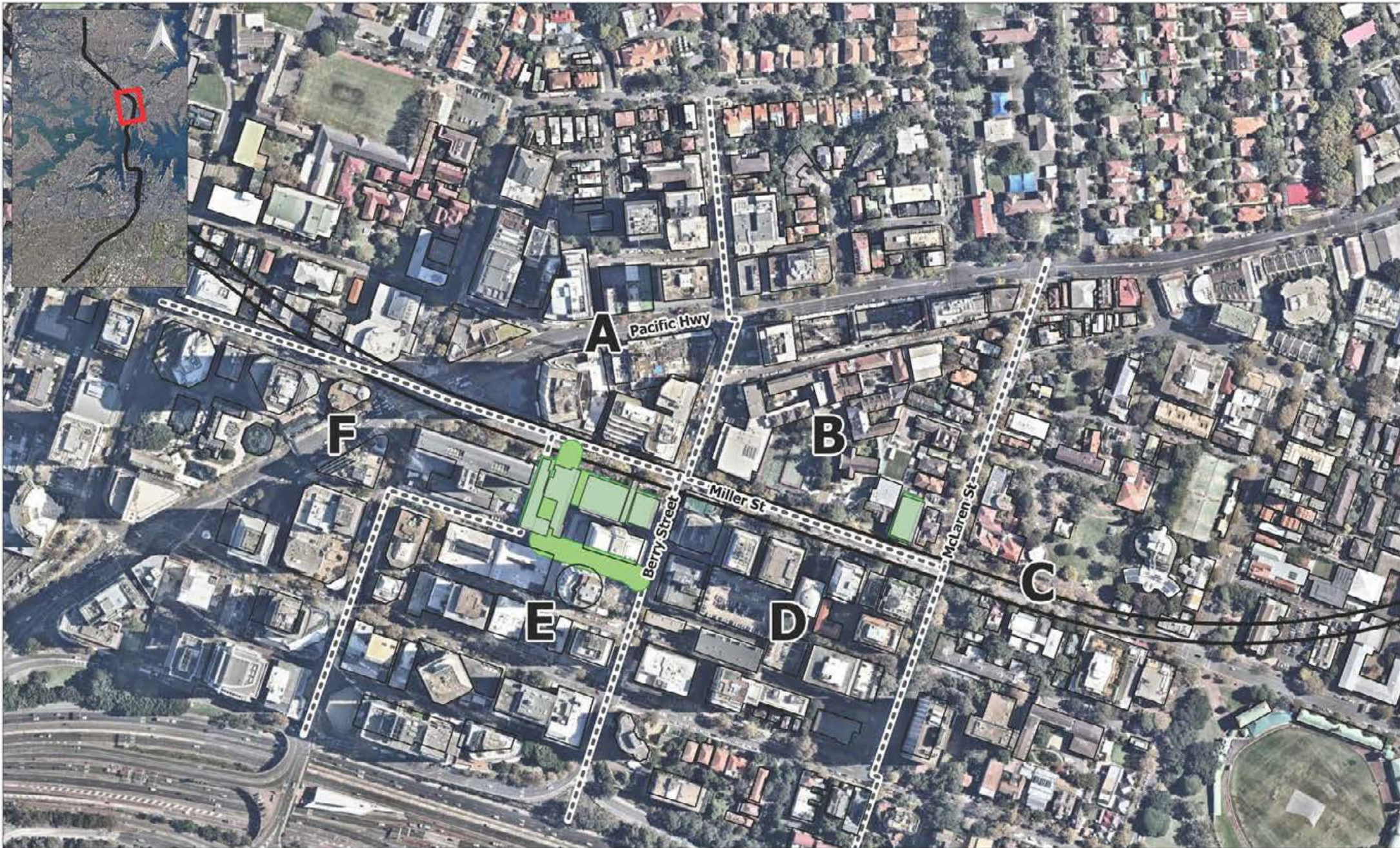
0 dB - 10 dB    10 dB - 20 dB    > 20 dB

Jacobs Group (Australia) Pty Limited

Sydney Metro Chatswood to Sydenham

Construction Noise Predictions  
Worst-case NML Exceedance  
Excavation with Shed – Daytime

The content contained within this document may be based on third party data.  
SLR Consulting Australia Pty Ltd does not guarantee the accuracy of such information.



2 LINCOLN STREET  
LAINE COVE  
NSW 2066  
AUSTRALIA  
T: +61 2 9427 8100  
F: +61 2 0801  
www.slronline.com

Project No.: 510.14718  
Date: 08/12/2015  
Drawn by: HR  
Scale: 1/4,000  
Sheet Size: @A4  
Projection: GDA 1994 MGA Zone 56



--- Receiver Area    Construction Area    Acquired Building

**Worst-case Exceedance of NML**

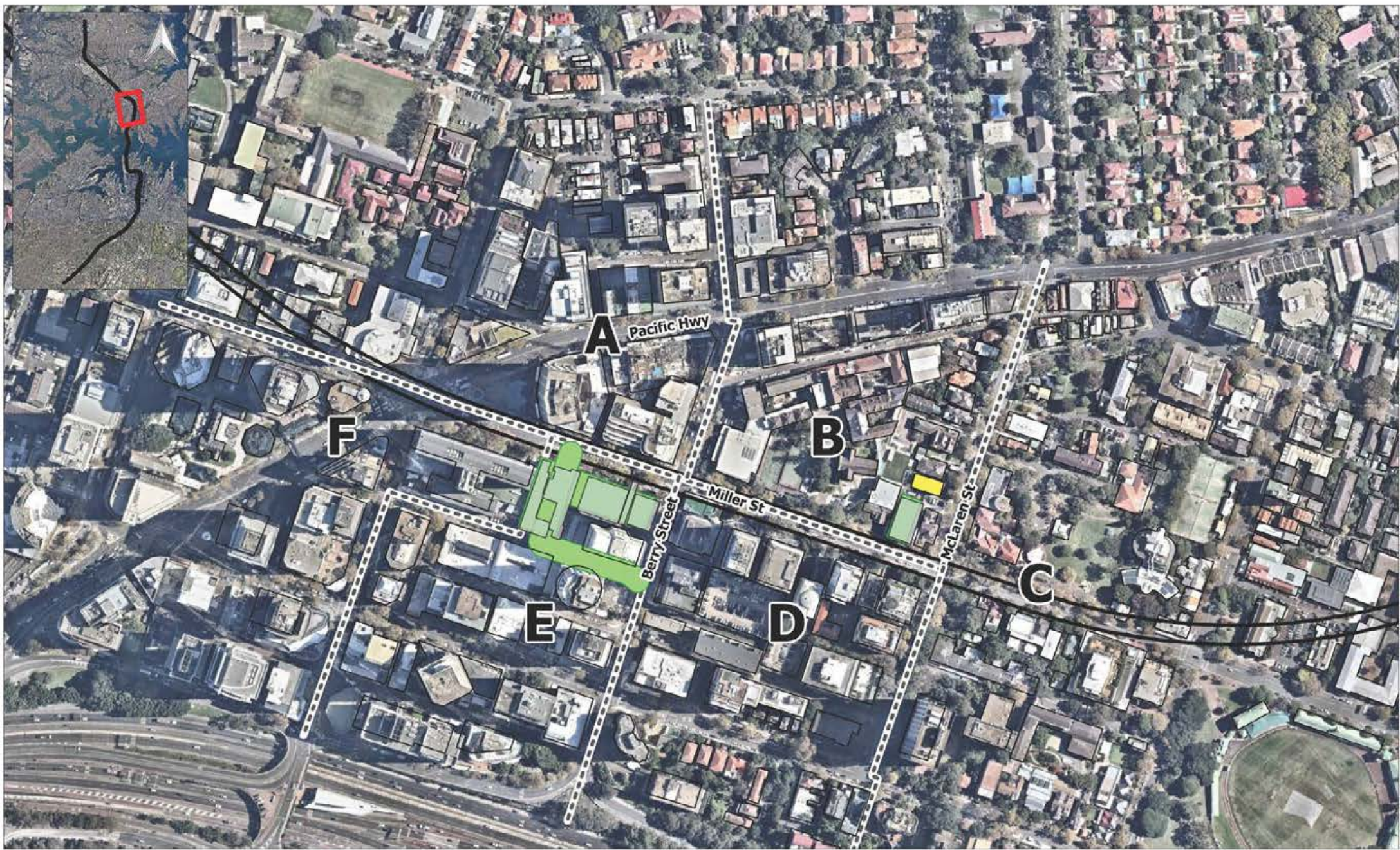
0 dB - 10 dB    10 dB - 20 dB    > 20 dB

Jacobs Group (Australia) Pty Limited

Sydney Metro Chatswood to Sydenham

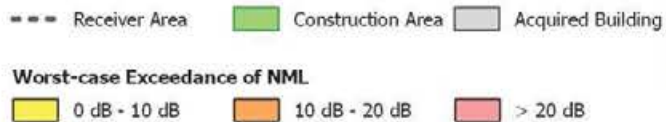
Construction Noise Predictions  
Worst-case NML Exceedance  
Excavation with Shed – Day OOH

The content contained within this document may be based on third party data. SLR Consulting Australia Pty Ltd does not guarantee the accuracy of such information.



2 LINCOLN STREET  
LAKE COVE  
NSW 2066  
AUSTRALIA  
T: +61 2 9427 8100  
F: +61 2 0801  
www.slrconsulting.com

Project No.: 610.11718  
Date: 08/12/2015  
Drawn by: NR  
Scale: 1:4,000  
Sheet Size: @A4  
Projection: GDA 1994 MGA Zone 56

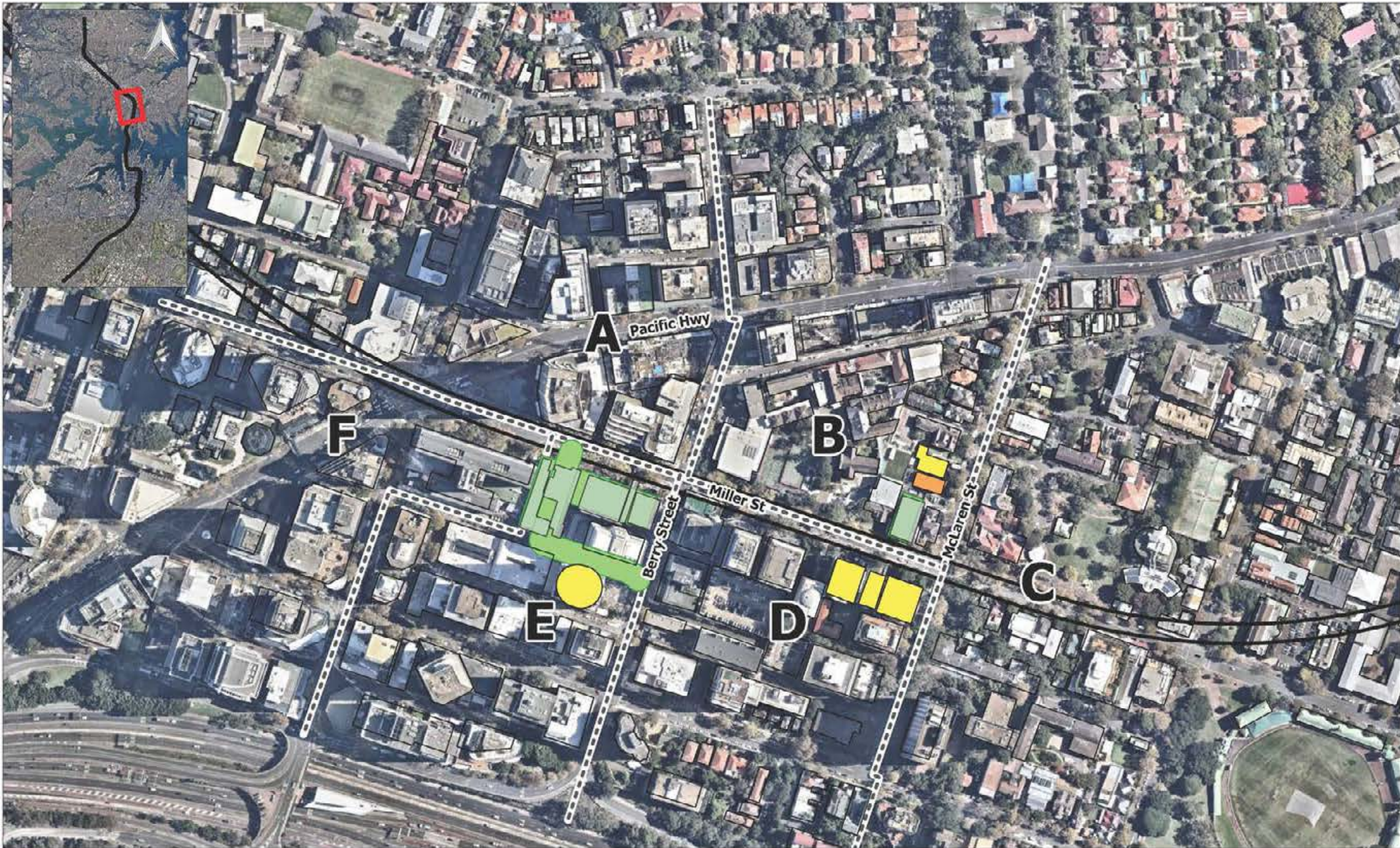


Jacobs Group (Australia) Pty Limited

Sydney Metro Chatswood to Sydenham

Construction Noise Predictions  
Worst-case NML Exceedance  
Excavation with Shed – Evening

The content contained within this document may be based on third party data. SLR Consulting Australia Pty Ltd does not guarantee the accuracy of such information.



2 LINCOLN STREET  
LAINE COVE  
NSW 2066  
AUSTRALIA  
T: +61 2 9427 8100  
F: +61 2 0801  
www.slronline.com

Project No.: 510.14718  
Date: 08/12/2015  
Drawn by: HR  
Scale: 1:4,000  
Sheet Size: @A4  
Projection: GDA 1994 MGA Zone 56



--- Receiver Area    Construction Area    Acquired Building

**Worst-case Exceedance of NML**

0 dB - 10 dB    10 dB - 20 dB    > 20 dB

Jacobs Group (Australia) Pty Limited

Sydney Metro Chatswood to Sydenham

Construction Noise Predictions  
Worst-case NML Exceedance  
Excavation with Shed – Night

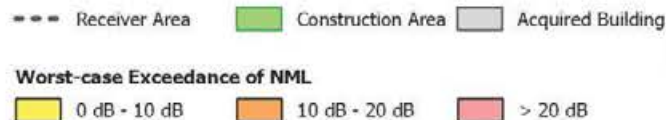
The content contained within this document may be based on third party data. SLR Consulting Australia Pty Ltd does not guarantee the accuracy of such information.



2 LINCOLN STREET  
LAKE COVE  
NSW 2066  
AUSTRALIA  
T: +61 2 9427 8100  
F: +61 2 0801  
www.slrconsulting.com

The content contained within this document may be based on third party data.  
SLR Consulting Australia Pty Ltd does not guarantee the accuracy of such information.

Project No.:	610.14718
Date:	08/12/2015
Drawn by:	MR
Scale:	1:4,000
Sheet Size:	@A1
Projection:	GDA 1994 MGA Zone 56



Jacobs Group (Australia) Pty Limited

Sydney Metro Chatswood to Sydenham

Construction Noise Predictions  
Worst-case NML Exceedance  
Excavation – Daytime



2 LINCOLN STREET  
LAKE COVE  
NSW 2066  
AUSTRALIA  
T: +61 2 9427 8100  
F: +61 2 0801  
www.slrconsulting.com

Project No.:	610.14718
Date:	08/12/2015
Drawn by:	MR
Scale:	1:4,000
Sheet Size:	@A1
Projection:	GDA 1994 MGA Zone 56



--- Receiver Area    Construction Area    Acquired Building

**Worst-case Exceedance of NML**

0 dB - 10 dB    10 dB - 20 dB    > 20 dB

Jacobs Group (Australia) Pty Limited

Sydney Metro Chatswood to Sydenham

Construction Noise Predictions  
Worst-case NML Exceedance  
Excavation with Shed – Daytime

The content contained within this document may be based on third party data. SLR Consulting Australia Pty Ltd does not guarantee the accuracy of such information.





2 LINCOLN STREET  
LAJIE COVE  
NSW 2066  
AUSTRALIA  
T: +61 2 9427 8100  
F: +61 2 0801  
www.slronline.com

Project No.: S10.14718  
Date: 08/12/2015  
Drawn by: MR  
Scale: 1:4,000  
Sheet Size: @A1  
Projection: GDA 1994 MGA Zone 56



--- Receiver Area    Construction Area    Acquired Building

**Worst-case Exceedance of NML**

0 dB - 10 dB    10 dB - 20 dB    > 20 dB

Jacobs Group (Australia) Pty Limited  
Sydney Metro Chatswood to Sydenham

Construction Noise Predictions  
Worst-case NML Exceedance  
Excavation with Shed – Daytime OOH

The content contained within this document may be based on third party data. SLR Consulting Australia Pty Ltd does not guarantee the accuracy of such information.



2 LINCOLN STREET  
LAJIE COVE  
NSW 2066  
AUSTRALIA  
T: +61 2 9427 8100  
F: +61 2 0801  
www.slronline.com

Project No.: 510.14718  
Date: 08/12/2015  
Drawn by: MR  
Scale: 1:4,000  
Sheet Size: @A1  
Projection: GDA 1994 MGA Zone 56



--- Receiver Area    Construction Area    Acquired Building

**Worst-case Exceedance of NML**

0 dB - 10 dB    10 dB - 20 dB    > 20 dB

Jacobs Group (Australia) Pty Limited  
Sydney Metro Chatswood to Sydenham

Construction Noise Predictions  
Worst-case NML Exceedance  
Excavation with Shed – Evening

The content contained within this document may be based on third party data. SLR Consulting Australia Pty Ltd does not guarantee the accuracy of such information.



2 LINCOLN STREET  
LANE COVE  
NSW 2066  
AUSTRALIA  
T: +61 2 9427 8100  
F: +61 2 0801  
www.slrconsulting.com

Project No.: 610.14718  
Date: 08/12/2015  
Drawn by: MR  
Scale: 1:4,000  
Sheet Size: @A1  
Projection: GDA 1994 MGA Zone 56



--- Receiver Area    Construction Area    Acquired Building

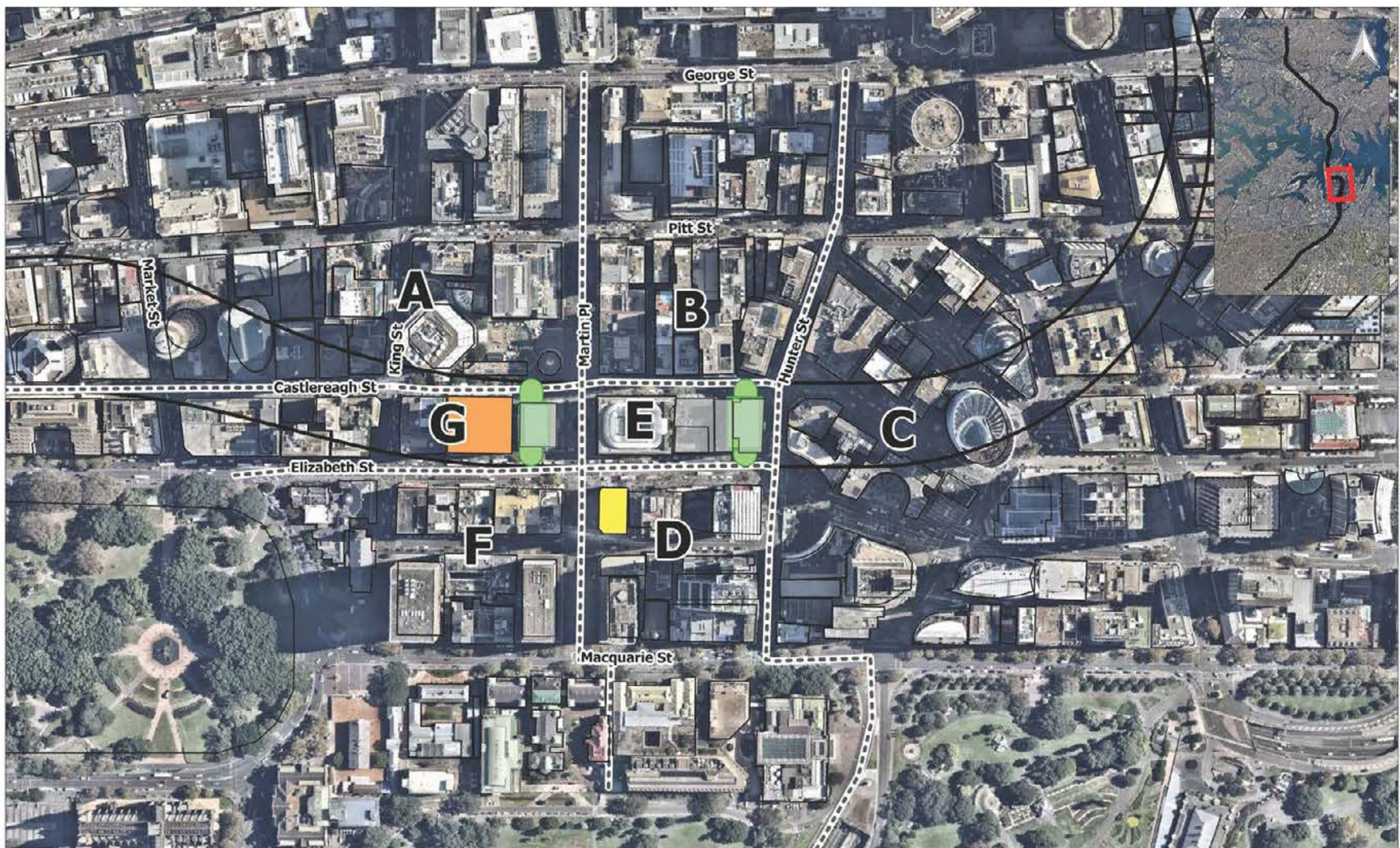
**Worst-case Exceedance of NML**

0 dB - 10 dB    10 dB - 20 dB    > 20 dB

Jacobs Group (Australia) Pty Limited  
Sydney Metro Chatswood to Sydenham

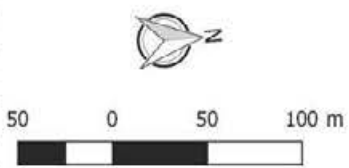
Construction Noise Predictions  
Worst-case NML Exceedance  
Excavation with Shed – Night

The content contained within this document may be based on third party data. SLR Consulting Australia Pty Ltd does not guarantee the accuracy of such information.



**SLR**  
 2 LINCOLN STREET  
 LAKE COVE  
 NSW 2066  
 AUSTRALIA  
 T: +61 2 9427 8100  
 F: +61 2 0801  
 www.slrconsulting.com

Project No.: 610.14718  
 Date: 08/12/2015  
 Drawn by: MRR  
 Scale: 1:4,000  
 Sheet Size: @A1  
 Projection: GDA 1994 MGA Zone 56



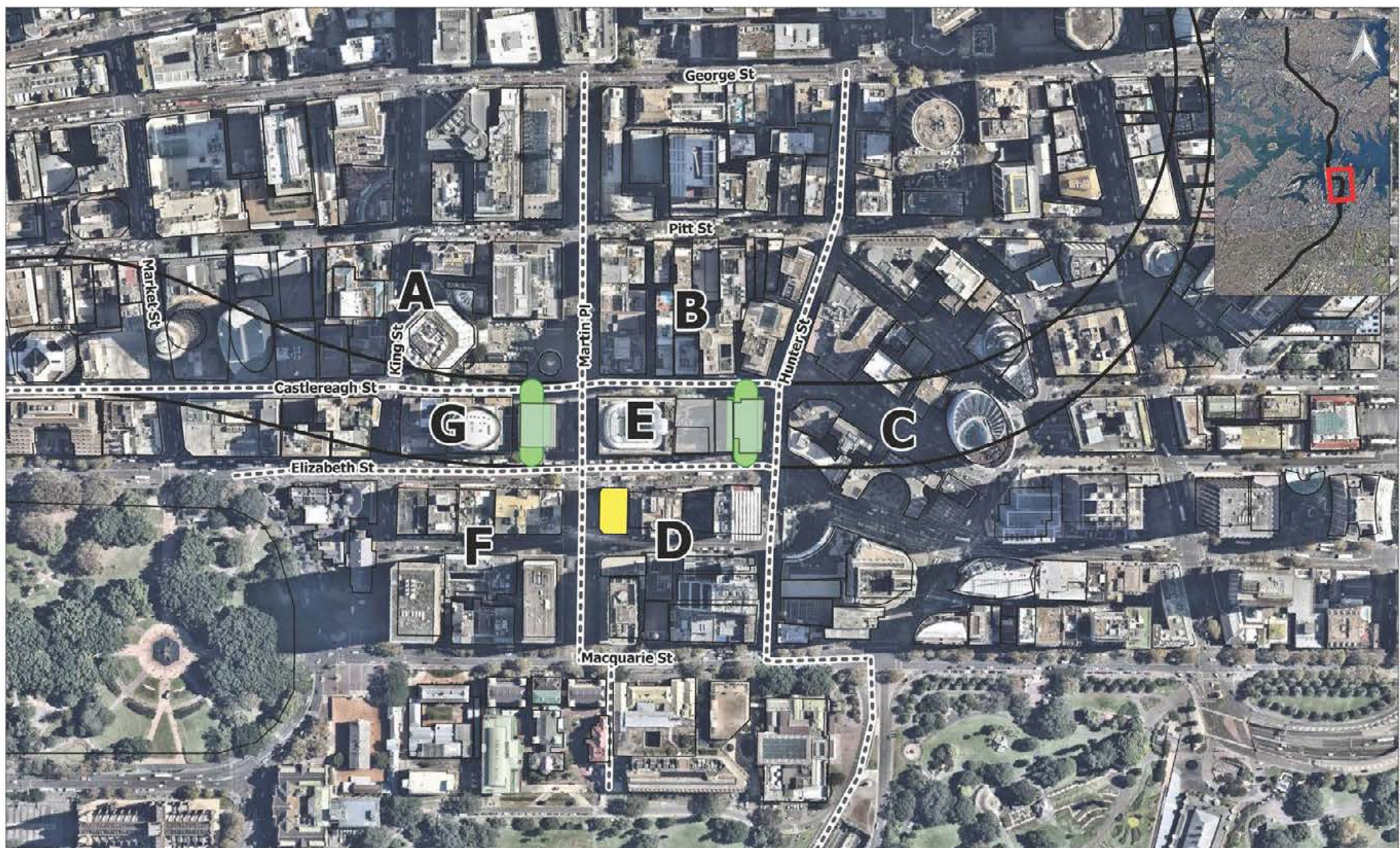
--- Receiver Area    Construction Area    Acquired Building

**Worst-case Exceedance of NML**

0 dB - 10 dB    10 dB - 20 dB    > 20 dB

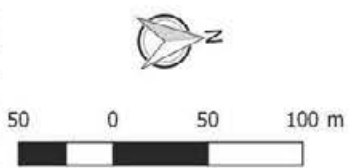
Jacobs Group (Australia) Pty Limited  
 Sydney Metro Chatswood to Sydenham  
 Construction Noise Predictions  
 Worst-case NML Exceedance  
 Excavation with Shed – Daytime


The content contained within this document may be based on third party data. SLR Consulting Australia Pty Ltd does not guarantee the accuracy of such information.



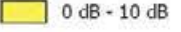

**SLR**  2 LINCOLN STREET  
LANE COVE  
NSW 2066  
AUSTRALIA  
T: +61 2 9427 8100  
F: +61 2 0801  
www.slrconsulting.com

Project No.: 610.14718  
Date: 08/12/2015  
Drawn by: MR  
Scale: 1:4,000  
Sheet Size: @A4  
Projection: GDA 1994 MGA Zone 56



--- Receiver Area     Construction Area     Acquired Building

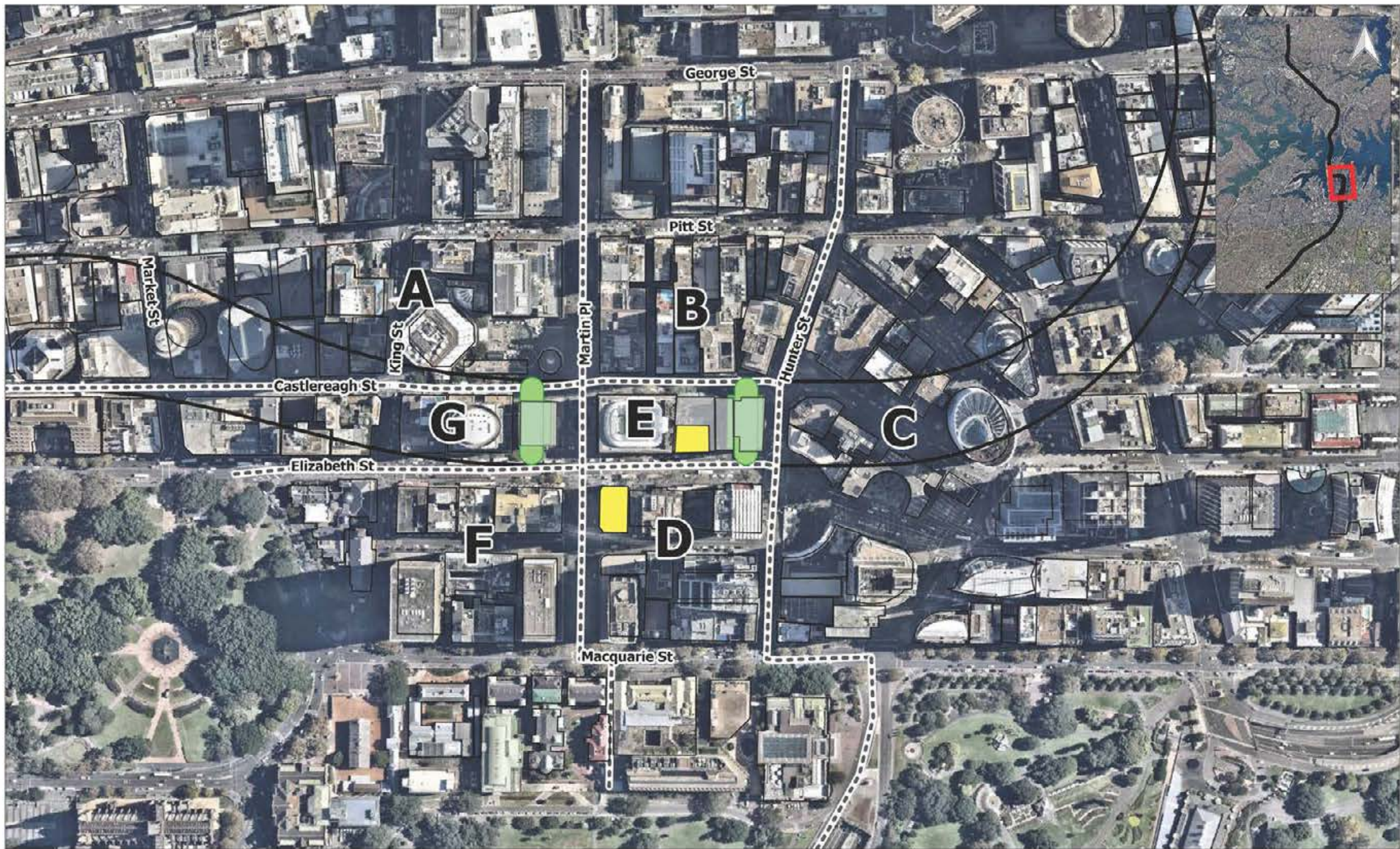
**Worst-case Exceedance of NML**

 0 dB - 10 dB     10 dB - 20 dB     > 20 dB

Jacobs Group (Australia) Pty Limited  
Sydney Metro Chatswood to Sydenham

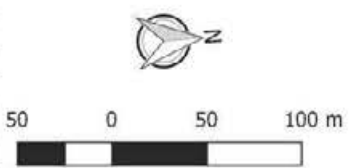
**Construction Noise Predictions  
Worst-case NML Exceedance  
Excavation with Shed – Day OOH**

The content contained within this document may be based on third party data. SLR Consulting Australia Pty Ltd does not guarantee the accuracy of such information.



**SLR**  2 LINCOLN STREET  
LAJIE COVE  
NSW 2066  
AUSTRALIA  
T: +61 2 9427 8100  
F: +61 2 0801  
www.slronline.com

Project No.: S10.14718  
Date: 08/12/2015  
Drawn by: MR  
Scale: 1:4,000  
Sheet Size: @A4  
Projection: GDA 1994 MGA Zone 56



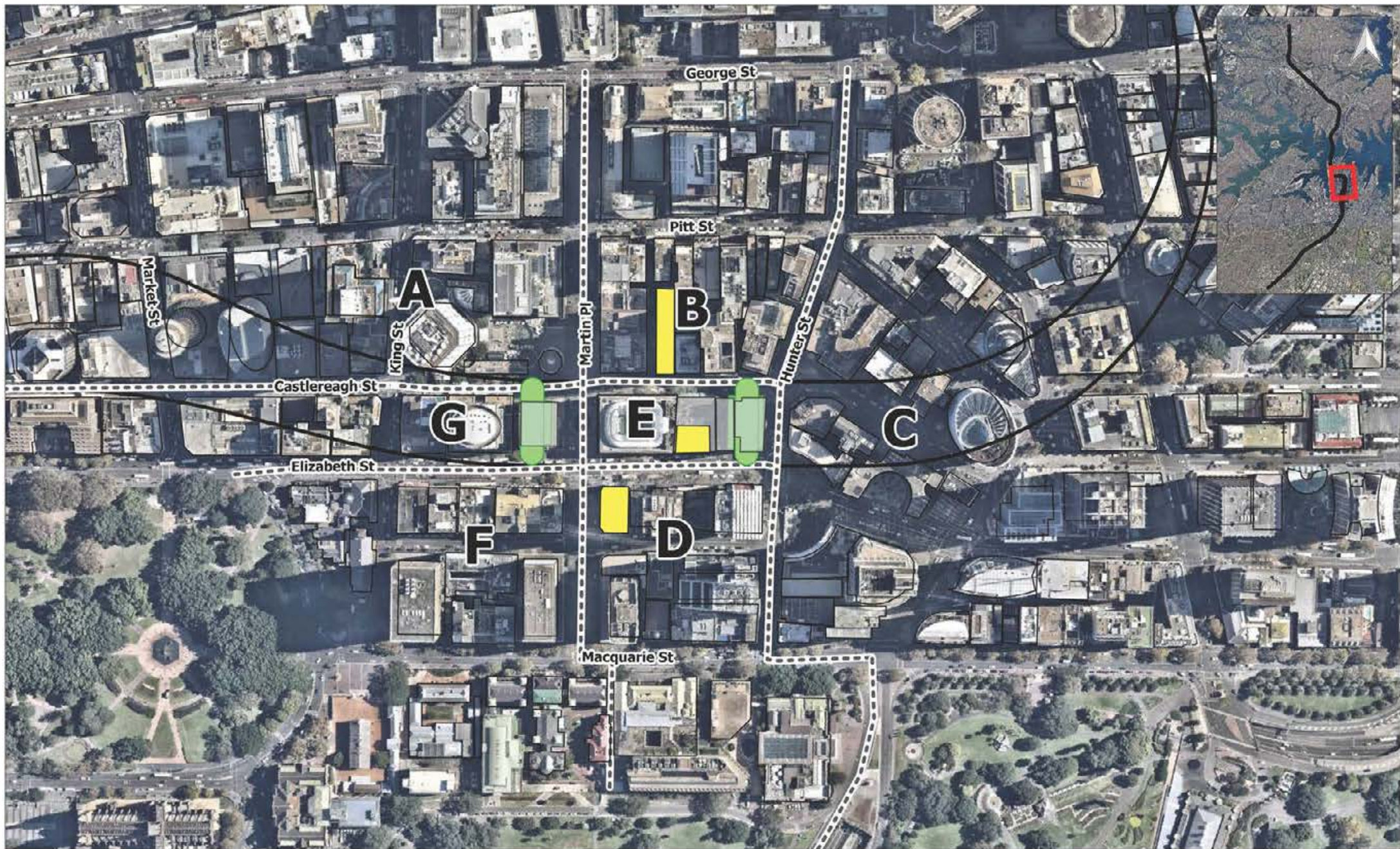
--- Receiver Area     Construction Area     Acquired Building

**Worst-case Exceedance of NML**

 0 dB - 10 dB     10 dB - 20 dB     > 20 dB

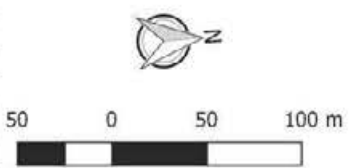
Jacobs Group (Australia) Pty Limited  
**Sydney Metro Chatswood to Sydenham**  
Construction Noise Predictions  
Worst-case NML Exceedance  
Excavation with Shed – Evening



The content within this document may be based on third party data. SLR Consulting Australia Pty Ltd does not guarantee the accuracy of such information.



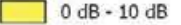
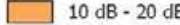

**SLR**  2 LINCOLN STREET  
LAJIE COVE  
NSW 2066  
AUSTRALIA  
T: +61 2 9427 8100  
F: +61 2 0801  
www.slronline.com

Project No.: S10.14718  
Date: 08/12/2015  
Drawn by: MR  
Scale: 1:4,000  
Sheet Size: @A4  
Projection: GDA 1994 MGA Zone 56



--- Receiver Area     Construction Area     Acquired Building

**Worst-case Exceedance of NML**

 0 dB - 10 dB     10 dB - 20 dB     > 20 dB

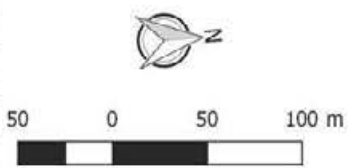
Jacobs Group (Australia) Pty Limited  
Sydney Metro Chatswood to Sydenham  
Construction Noise Predictions  
Worst-case NML Exceedance  
Excavation with Shed – Night

The content contained within this document may be based on third party data. SLR Consulting Australia Pty Ltd does not guarantee the accuracy of such information.



**SLR**  
 2 LINCOLN STREET  
 LAKE COVE  
 NSW 2066  
 AUSTRALIA  
 T: +61 2 9427 8100  
 F: +61 2 0801  
 www.slrconsulting.com

Project No.:	610.14718
Date:	08/12/2015
Drawn by:	MR
Scale:	1:4,000
Sheet Size:	@A1
Projection:	GDA 1994 MGA Zone 56



--- Receiver Area    Construction Area    Acquired Building

**Worst-case Exceedance of NML**

0 dB - 10 dB    10 dB - 20 dB    > 20 dB

Jacobs Group (Australia) Pty Limited  
 Sydney Metro Chatswood to Sydenham  
 Construction Noise Predictions  
 Worst-case NML Exceedance  
 Excavation with Shed – Daytime

The content contained within this document may be based on third party data. SLR Consulting Australia Pty Ltd does not guarantee the accuracy of such information.





**SLR** 

2 LINCOLN STREET  
LAINE COVE  
NSW 2066  
AUSTRALIA  
T: +61 2 9427 8100  
F: +61 2 0801  
www.slronline.com

Project No.: 510.14718  
Date: 08/12/2015  
Drawn by: HR  
Scale: 1:4,000  
Sheet Size: @A4  
Projection: GDA 1994 MGA Zone 56



--- Receiver Area    Construction Area    Acquired Building

**Worst-case Exceedance of NML**

0 dB - 10 dB    10 dB - 20 dB    > 20 dB

Jacobs Group (Australia) Pty Limited  
Sydney Metro Chatswood to Sydenham

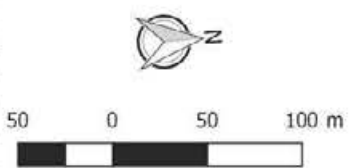
**Construction Noise Predictions  
Worst-case NML Exceedance  
Excavation with Shed – Day OOH**

The content contained within this document may be based on third party data. SLR Consulting Australia Pty Ltd does not guarantee the accuracy of such information.



**SLR**  
 2 LINCOLN STREET  
 LAINE COVE  
 NSW 2066  
 AUSTRALIA  
 T: +61 2 9427 8100  
 F: +61 2 0801  
 www.slronline.com

Project No.: 510.14718  
 Date: 08/12/2015  
 Drawn by: HR  
 Scale: 1/4,000  
 Sheet Size: @A4  
 Projection: GDA 1994 MGA Zone 56



--- Receiver Area    Construction Area    Acquired Building

**Worst-case Exceedance of NML**

0 dB - 10 dB    10 dB - 20 dB    > 20 dB

Jacobs Group (Australia) Pty Limited  
 Sydney Metro Chatswood to Sydenham  
 Construction Noise Predictions  
 Worst-case NML Exceedance  
 Excavation with Shed – Evening

The content contained within this document may be based on third party data. SLR Consulting Australia Pty Ltd does not guarantee the accuracy of such information.



2 LINCOLN STREET  
LAKE COVE  
NSW 2066  
AUSTRALIA  
T: +61 2 9427 8100  
F: +61 2 0801  
www.slrconsulting.com

Project No.:	610.11718
Date:	08/12/2015
Drawn by:	NR
Scale:	1:4,000
Sheet Size:	@A4
Projection:	GDA 1994 MGA Zone 56



- Receiver Area
  - Construction Area
  - Acquired Building
- Worst-case Exceedance of NML**
- 0 dB - 10 dB
  - 10 dB - 20 dB
  - > 20 dB

Jacobs Group (Australia) Pty Limited

Sydney Metro Chatswood to Sydenham

Construction Noise Predictions  
Worst-case NML Exceedance  
Excavation with Shed - Night

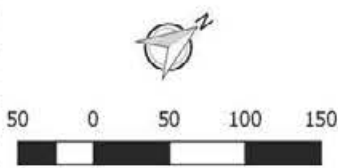
The content contained within this document may be based on third party data. SLR Consulting Australia Pty Ltd does not guarantee the accuracy of such information.





**SLR** 

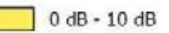
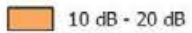
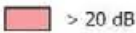
2 LINCOLN STREET  
LANE COVE  
NSW 2066  
AUSTRALIA  
T: +61 2 9427 8100  
F: +61 2 0801  
www.slrc consulting.com

Project No.: 610.14718  
Date: 08/12/2015  
Drawn by: MR  
Scale: 1:5,000  
Sheet Size: @A1  
Projection: GDA 1994 MGA Zone 56



--- Receiver Area     Construction Area     Acquired Building

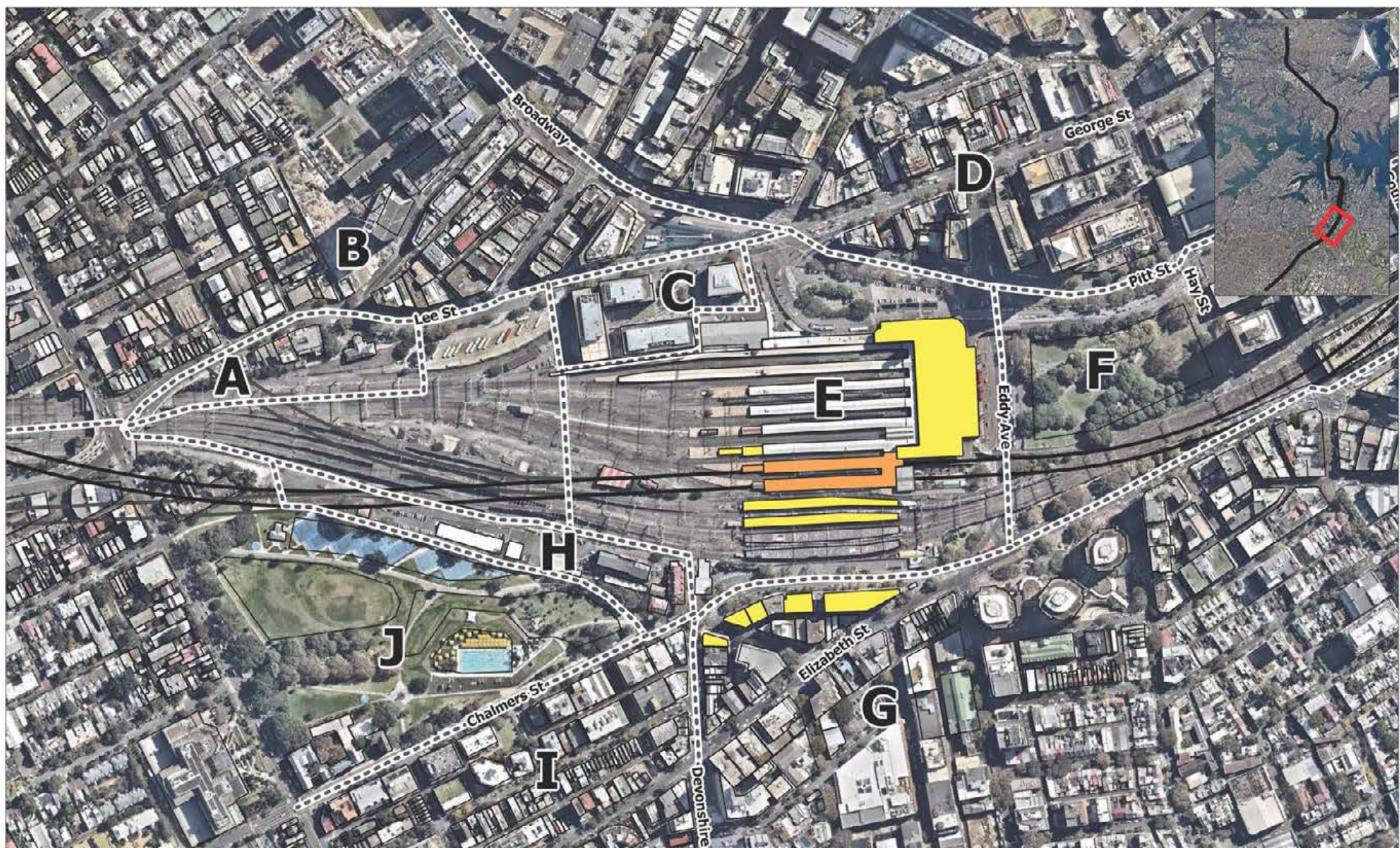
**Worst-case Exceedance of NML**

 0 dB - 10 dB     10 dB - 20 dB     > 20 dB

Jacobs Group (Australia) Pty Limited  
Sydney Metro Chatswood to Sydenham

**Construction Noise Predictions  
Worst-case NML Exceedance  
Excavation – Daytime**

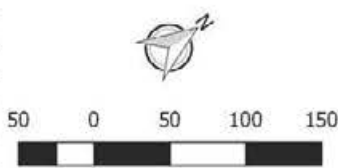
The content contained within this document may be based on third party data. SLR Consulting Australia Pty Ltd does not guarantee the accuracy of such information.




**SLR** 

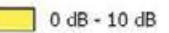

2 LINCOLN STREET  
LANE COVE  
NSW 2066  
AUSTRALIA  
T: +61 2 9427 8100  
F: +61 2 0801  
www.slronline.com

Project No.: 610.14718  
Date: 08/12/2015  
Drawn by: MR  
Scale: 1:5,000  
Sheet Size: @A4  
Projection: GDA 1994 MGA Zone 56



--- Receiver Area     Construction Area     Acquired Building

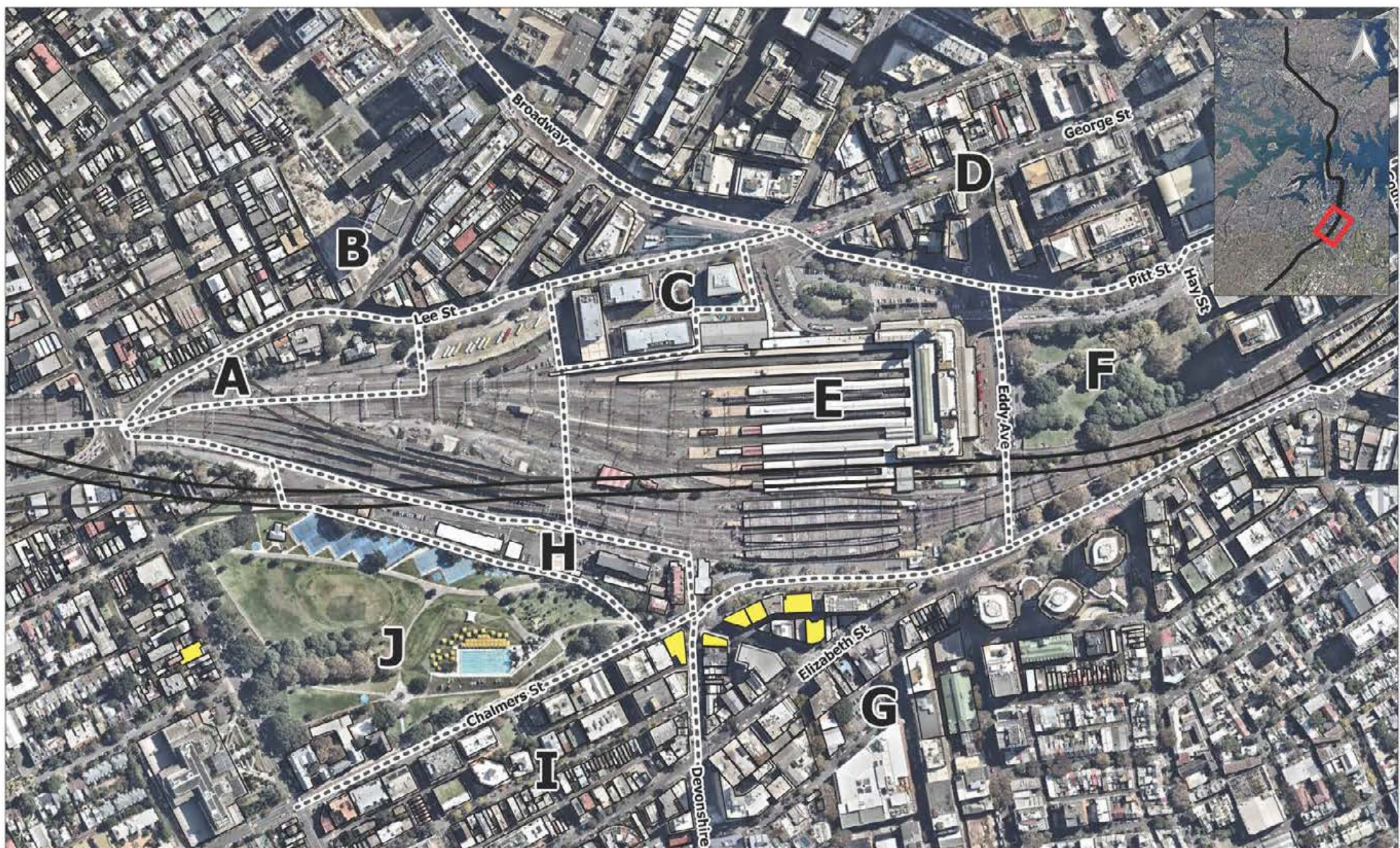
**Worst-case Exceedance of NML**

 0 dB - 10 dB     10 dB - 20 dB     > 20 dB

Jacobs Group (Australia) Pty Limited  
Sydney Metro Chatswood to Sydenham

**Construction Noise Predictions  
Worst-case NML Exceedance  
Excavation – Day OOH**

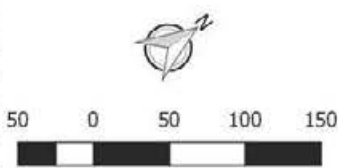
The content contained within this document may be based on third party data. SLR Consulting Australia Pty Ltd does not guarantee the accuracy of such information.





**SLR** 

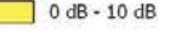
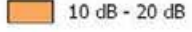

2 LINCOLN STREET  
LAINE COVE  
NSW 2066  
AUSTRALIA  
T: +61 2 9427 8100  
F: +61 2 0801  
www.slronline.com

Project No.: 610.14718  
Date: 08/12/2015  
Drawn by: MR  
Scale: 1:5,000  
Sheet Size: @A4  
Projection: GDA 1994 MGA Zone 56



--- Receiver Area     Construction Area     Acquired Building

**Worst-case Exceedance of NML**

 0 dB - 10 dB     10 dB - 20 dB     > 20 dB

Jacobs Group (Australia) Pty Limited  
Sydney Metro Chatswood to Sydenham

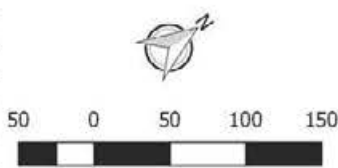
**Construction Noise Predictions  
Worst-case NML Exceedance  
Excavation – Evening**



The content contained within this document may be based on third party data. SLR Consulting Australia Pty Ltd does not guarantee the accuracy of such information.



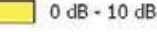

**SLR**  2 LINCOLN STREET  
LANE COVE  
NSW 2066  
AUSTRALIA  
T: +61 2 9427 8100  
F: +61 2 0801  
www.slronline.com

Project No.: 610.14718  
Date: 08/12/2015  
Drawn by: MR  
Scale: 1:5,000  
Sheet Size: @A4  
Projection: GDA 1994 MGA Zone 56



--- Receiver Area     Construction Area     Acquired Building

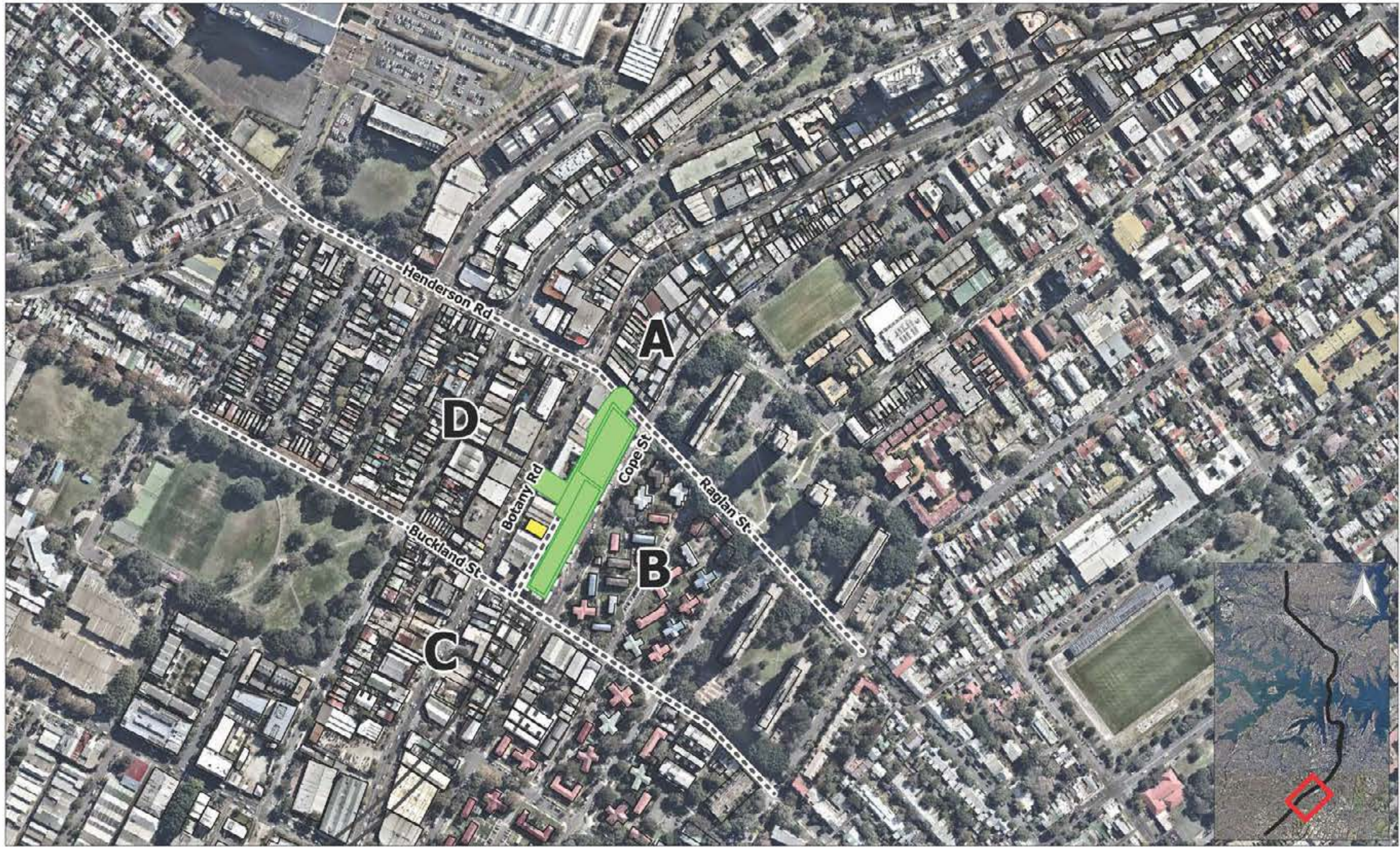
**Worst-case Exceedance of NML**

 0 dB - 10 dB     10 dB - 20 dB     > 20 dB

Jacobs Group (Australia) Pty Limited  
Sydney Metro Chatswood to Sydenham

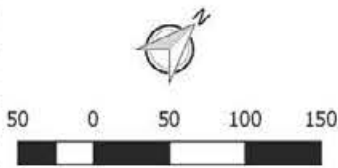
**Construction Noise Predictions  
Worst-case NML Exceedance  
Excavation – Night**

The content contained within this document may be based on third party data. SLR Consulting Australia Pty Ltd does not guarantee the accuracy of such information.



**SLR**  2 LINCOLN STREET  
LAKE COVE  
NSW 2066  
AUSTRALIA  
T: +61 2 9427 8100  
F: +61 2 0801  
www.slrconsulting.com

Project No.: 610.14718  
Date: 08/12/2015  
Drawn by: MRR  
Scale: 1:5,000  
Sheet Size: @A1  
Projection: GDA 1994 MGA Zone 56



--- Receiver Area    Construction Area    Acquired Building

**Worst-case Exceedance of NML**

0 dB - 10 dB    10 dB - 20 dB    > 20 dB

Jacobs Group (Australia) Pty Limited  
Sydney Metro Chatswood to Sydenham

**Construction Noise Predictions  
Worst-case NML Exceedance  
Excavation with Shed – Daytime**

The content contained within this document may be based on third party data. SLR Consulting Australia Pty Ltd does not guarantee the accuracy of such information.





**SLR**  
 2 LINCOLN STREET  
 LAINE COVE  
 NSW 2066  
 AUSTRALIA  
 T: +61 2 9427 8100  
 F: +61 2 0801  
 www.slronline.com

Project No.: 510.14718  
 Date: 08/12/2015  
 Drawn by: HR  
 Scale: 1:15,000  
 Sheet Size: @A4  
 Projection: GDA 1994 MGA Zone 56



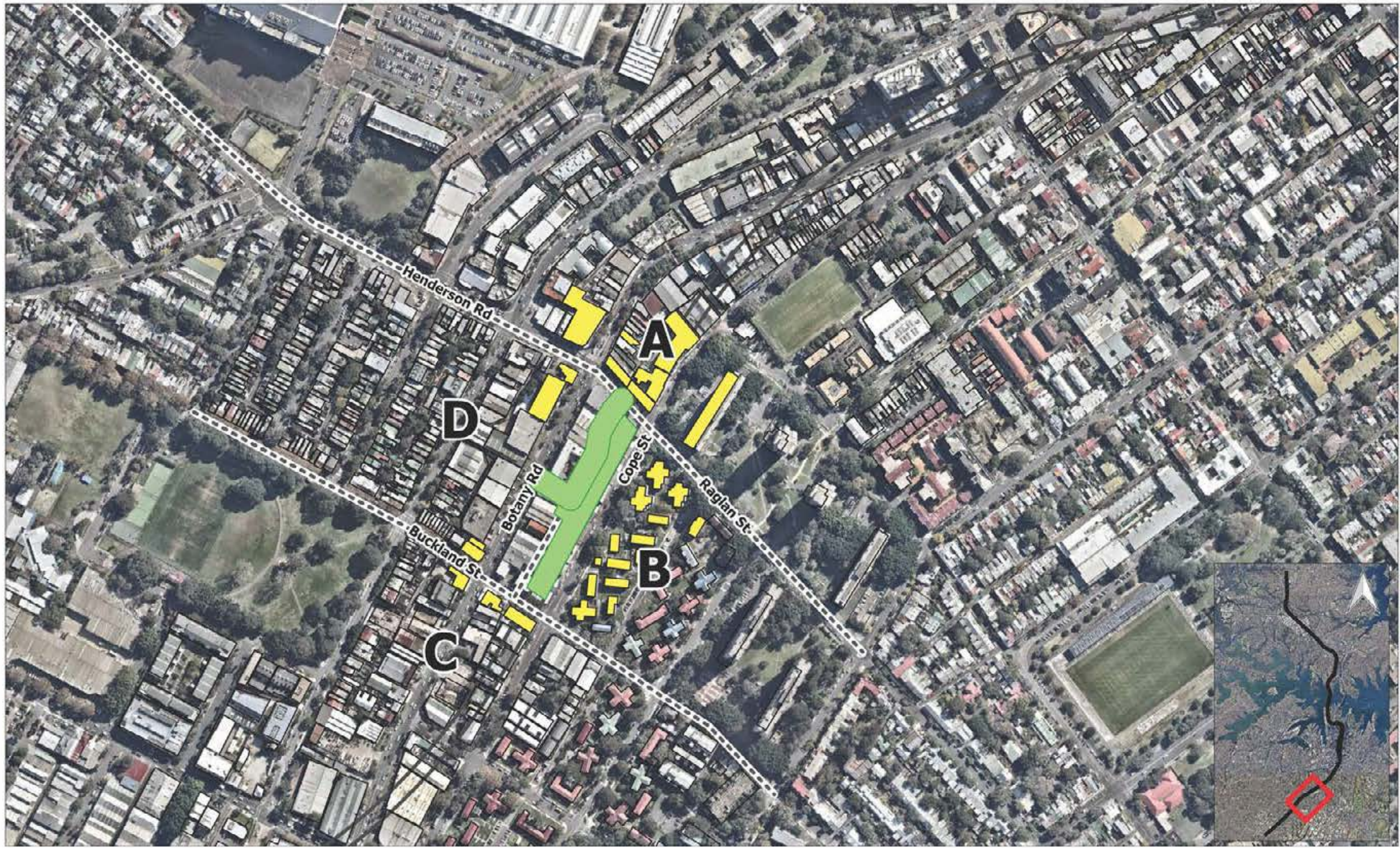
--- Receiver Area    Construction Area    Acquired Building

**Worst-case Exceedance of NML**

0 dB - 10 dB    10 dB - 20 dB    > 20 dB

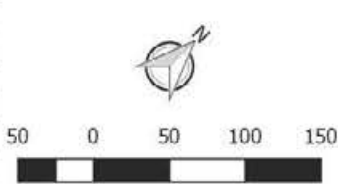
Jacobs Group (Australia) Pty Limited  
**Sydney Metro Chatswood to Sydenham**  
 Construction Noise Predictions  
 Worst-case NML Exceedance  
 Excavation with Shed – Day OOH

The content contained within this document may be based on third party data. SLR Consulting Australia Pty Ltd does not guarantee the accuracy of such information.



**SLR**  
 2 LINCOLN STREET  
 LAINE COVE  
 NSW 2066  
 AUSTRALIA  
 T: +61 2 9427 8100  
 F: +61 2 0801  
 www.slronline.com

Project No.: 510.14718  
 Date: 08/12/2015  
 Drawn by: HR  
 Scale: 1:15,000  
 Sheet Size: @A4  
 Projection: GDA 1994 MGA Zone 56



--- Receiver Area    Construction Area    Acquired Building

**Worst-case Exceedance of NML**

0 dB - 10 dB    10 dB - 20 dB    > 20 dB

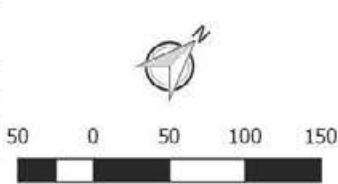
Jacobs Group (Australia) Pty Limited  
 Sydney Metro Chatswood to Sydenham  
 Construction Noise Predictions  
 Worst-case NML Exceedance  
 Excavation with Shed – Evening

The content contained within this document may be based on third party data. SLR Consulting Australia Pty Ltd does not guarantee the accuracy of such information.



**SLR**  
 2 LINCOLN STREET  
 LAINE COVE  
 NSW 2066  
 AUSTRALIA  
 T: +61 2 9427 8100  
 F: +61 2 0801  
 www.slronline.com

Project No.: 510.14718  
 Date: 08/12/2015  
 Drawn by: HR  
 Scale: 1:15,000  
 Sheet Size: @A4  
 Projection: GDA 1994 MGA Zone 56



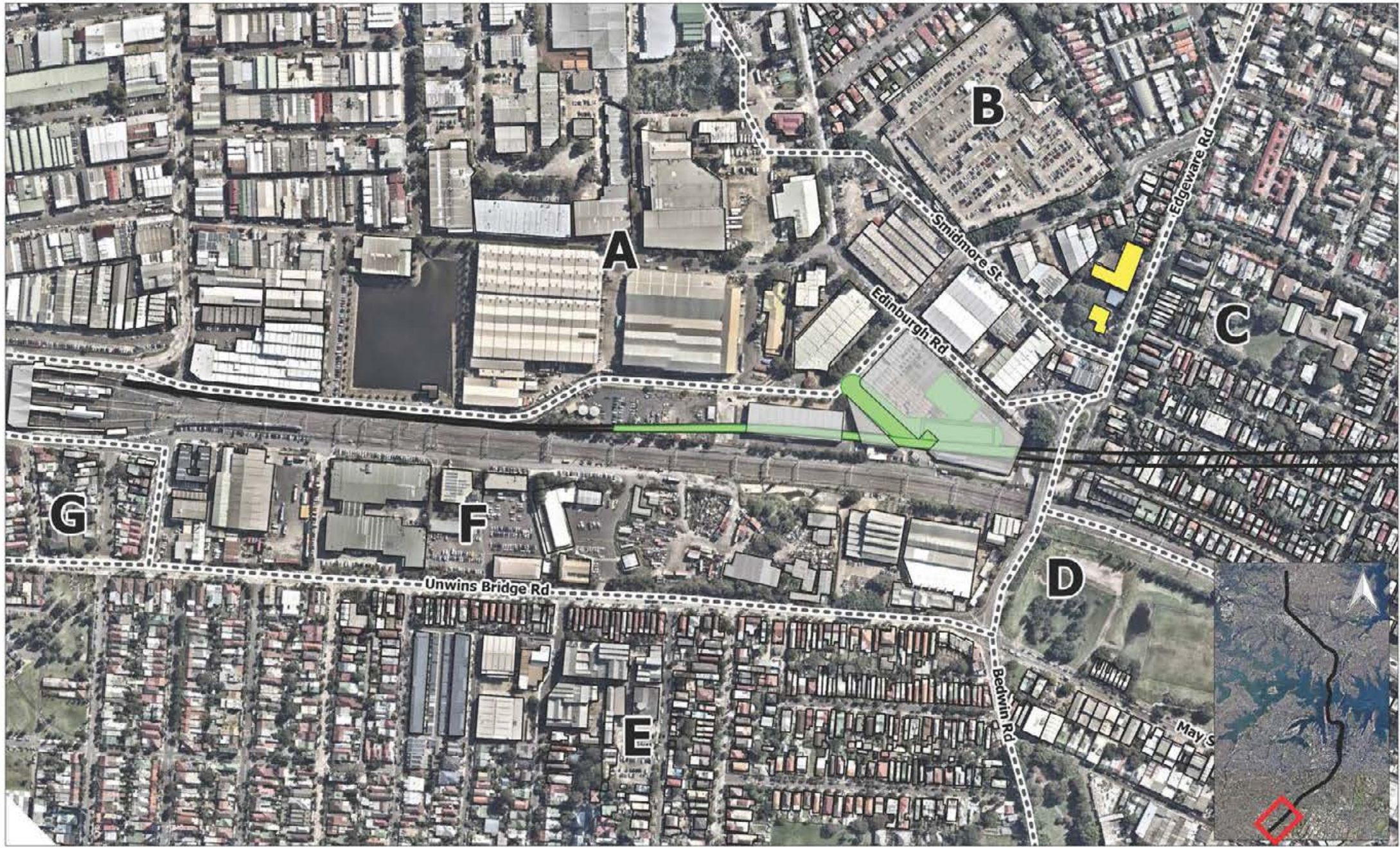
--- Receiver Area    Construction Area    Acquired Building

**Worst-case Exceedance of NML**

0 dB - 10 dB    10 dB - 20 dB    > 20 dB

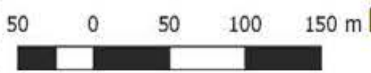
Jacobs Group (Australia) Pty Limited  
**Sydney Metro Chatswood to Sydenham**  
 Construction Noise Predictions  
 Worst-case NML Exceedance  
 Excavation with Shed – Night

The content contained within this document may be based on third party data. SLR Consulting Australia Pty Ltd does not guarantee the accuracy of such information.



**SLR**  
 2 LINCOLN STREET  
 LAKE COVE  
 NSW 2066  
 AUSTRALIA  
 T: +61 2 9427 8100  
 F: +61 2 0801  
 www.slrc consulting.com

Project No.: 610.14718  
 Date: 08/12/2015  
 Drawn by: HR  
 Scale: 1:5,000  
 Sheet Size: @A1  
 Projection: GDA 1994 MGA Zone 56



--- Receiver Area    Construction Area    Acquired Building

**Worst-case Exceedance of NML**

0 dB - 10 dB    10 dB - 20 dB    > 20 dB

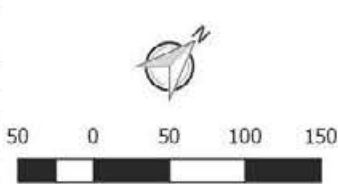
Jacobs Group (Australia) Pty Limited  
 Sydney Metro Chatswood to Sydenham  
 Construction Noise Predictions  
 Worst-case NML Exceedance  
 Tunnelling with Shed – Daytime

The content contained within this document may be based on third party data. SLR Consulting Australia Pty Ltd does not guarantee the accuracy of such information.



**SLR**  
 2 LINCOLN STREET  
 LAINE COVE  
 NSW 2066  
 AUSTRALIA  
 T: +61 2 9427 8100  
 F: +61 2 0801  
 www.slronline.com

Project No.: 510.14718  
 Date: 08/12/2015  
 Drawn by: HR  
 Scale: 1:5,000  
 Sheet Size: @A4  
 Projection: GDA 1994 MGA Zone 56



--- Receiver Area    ■ Construction Area    ■ Acquired Building

**Worst-case Exceedance of NML**

■ 0 dB - 10 dB    ■ 10 dB - 20 dB    ■ > 20 dB

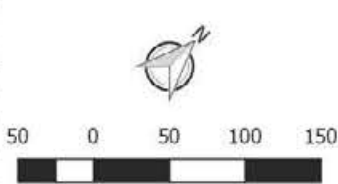
Jacobs Group (Australia) Pty Limited  
 Sydney Metro Chatswood to Sydenham  
 Construction Noise Predictions  
 Worst-case NML Exceedance  
 Tunnelling with Shed – Day OOH

The content contained within this document may be based on third party data. SLR Consulting Australia Pty Ltd does not guarantee the accuracy of such information.



**SLR**  
 2 LINCOLN STREET  
 LAINE COVE  
 NSW 2066  
 AUSTRALIA  
 T: +61 2 9427 8100  
 F: +61 2 0801  
 www.slronline.com

Project No.: 510.14718  
 Date: 08/12/2015  
 Drawn by: HR  
 Scale: 1:5,000  
 Sheet Size: @A4  
 Projection: GDA 1994 MGA Zone 56



--- Receiver Area    Construction Area    Acquired Building

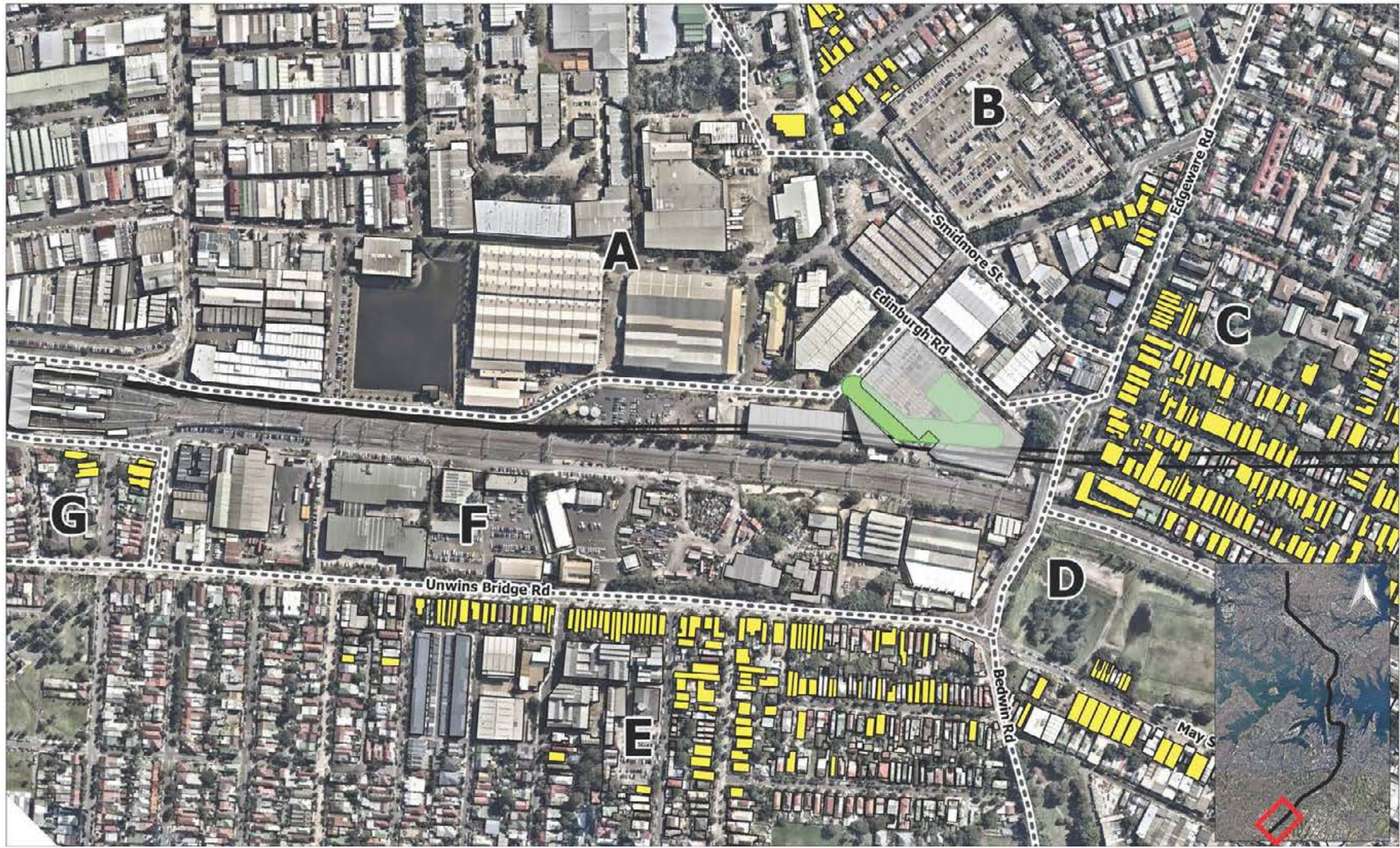
**Worst-case Exceedance of NML**

0 dB - 10 dB    10 dB - 20 dB    > 20 dB

Jacobs Group (Australia) Pty Limited  
 Sydney Metro Chatswood to Sydenham

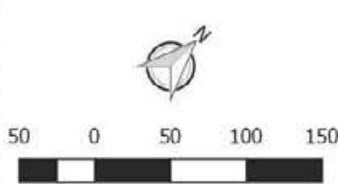
**Construction Noise Predictions  
 Worst-case NML Exceedance  
 Tunnelling with Shed - Evening**

The content contained within this document may be based on third party data. SLR Consulting Australia Pty Ltd does not guarantee the accuracy of such information.



**SLR**  
 2 LINCOLN STREET  
 LAKE COVE  
 NSW 2066  
 AUSTRALIA  
 T: +61 2 9427 8100  
 F: +61 2 0801  
 www.slrc consulting.com

Project No.: 610.11718  
 Date: 08/12/2015  
 Drawn by: NR  
 Scale: 1:5,000  
 Sheet Size: @A4  
 Projection: GDA 1994 MGA Zone 56



--- Receiver Area    Construction Area    Acquired Building

**Worst-case Exceedance of NML**

0 dB - 10 dB    10 dB - 20 dB    > 20 dB

Jacobs Group (Australia) Pty Limited  
 Sydney Metro Chatswood to Sydenham

**Construction Noise Predictions  
 Worst-case NML Exceedance  
 Tunnelling with Shed – Night**

The content contained within this document may be based on third party data. SLR Consulting Australia Pty Ltd does not guarantee the accuracy of such information.