

INDEX

D1 – Enabling Works

D2 – Surface Track

D3 – Earthworks

D4 – Construction of Acoustic Sheds

D5 – Tunnelling/Excavation

D6 – Fitout

D7 – Precast Factory

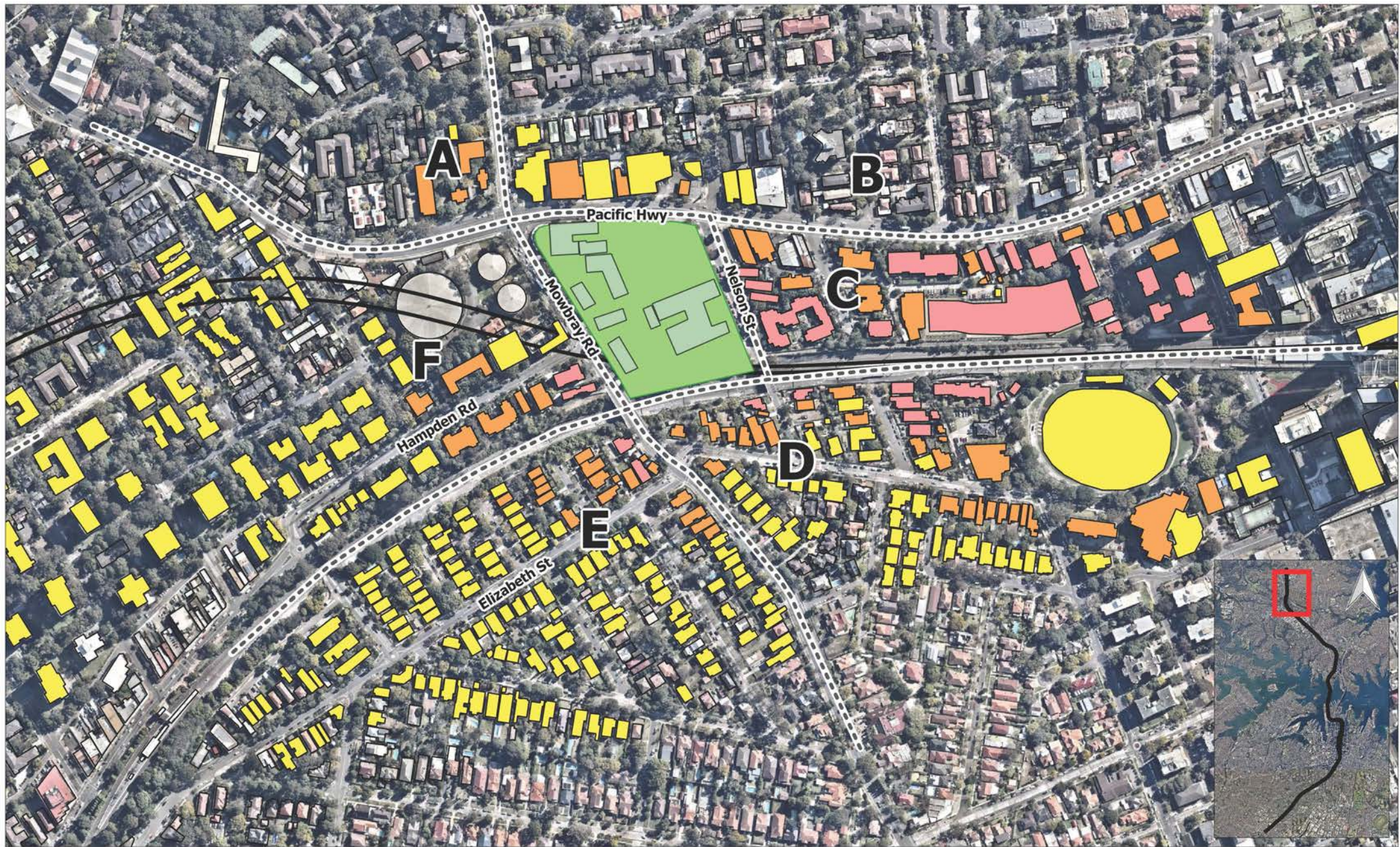
D8 – Harbour Crossing

D9 – Construction

Appendix D1

Report 610.14718R1
Construction Noise Predictions

Enabling Works



2 LINCOLN STREET
 LANE COVE
 NSW 2066
 AUSTRALIA
 T: +61 2 9427 8100
 F: +61 2 0801
 www.slrconsulting.com

Project No.: 610.14718
 Date: 08/12/2015
 Drawn by: IMR
 Scale: 1:5,000
 Sheet Size: @A4
 Projection: GDA 1994 MGA Zone 56



--- Receiver Area Construction Area Acquired Building

Worst-case Exceedance of NML

0 dB - 10 dB 10 dB - 20 dB > 20 dB



Jacobs Group (Australia) Pty Limited

Sydney Metro Chatswood to Sydenham

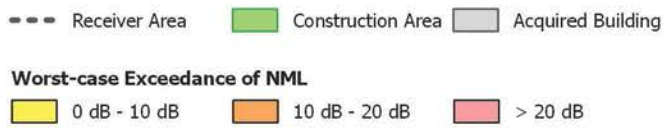
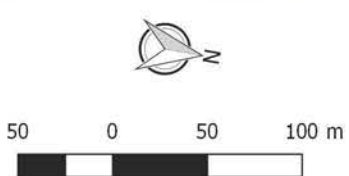
Construction Noise Predictions
 Worst-case NML Exceedance
 Enabling Works - Daytime

The content contained within this document may be based on third party data. SLR Consulting Australia Pty Ltd does not guarantee the accuracy of such information.



2 LINCOLN STREET
LANE COVE
NSW 2066
AUSTRALIA
T: +61 2 9427 8100
F: +61 2 0801
www.slrconsulting.com

Project No.: 610.14718
Date: 08/12/2015
Drawn by: MR
Scale: 1:4,000
Sheet Size: @A4
Projection: GDA 1994 MGA Zone 56



Jacobs Group (Australia) Pty Limited
Sydney Metro Chatswood to Sydenham

Construction Noise Predictions
Worst-case NML Exceedance
Enabling Works - Daytime

The content contained within this document may be based on third party data. SLR Consulting Australia Pty Ltd does not guarantee the accuracy of such information.



2 LINCOLN STREET
LANE COVE
NSW 2066
AUSTRALIA
T: +61 2 9427 8100
F: +61 2 0801
www.slrconsulting.com

Project No.: 610.14718
Date: 08/12/2015
Drawn by: IMR
Scale: 1:4,000
Sheet Size: @A4
Projection: GDA 1994 MGA Zone 56



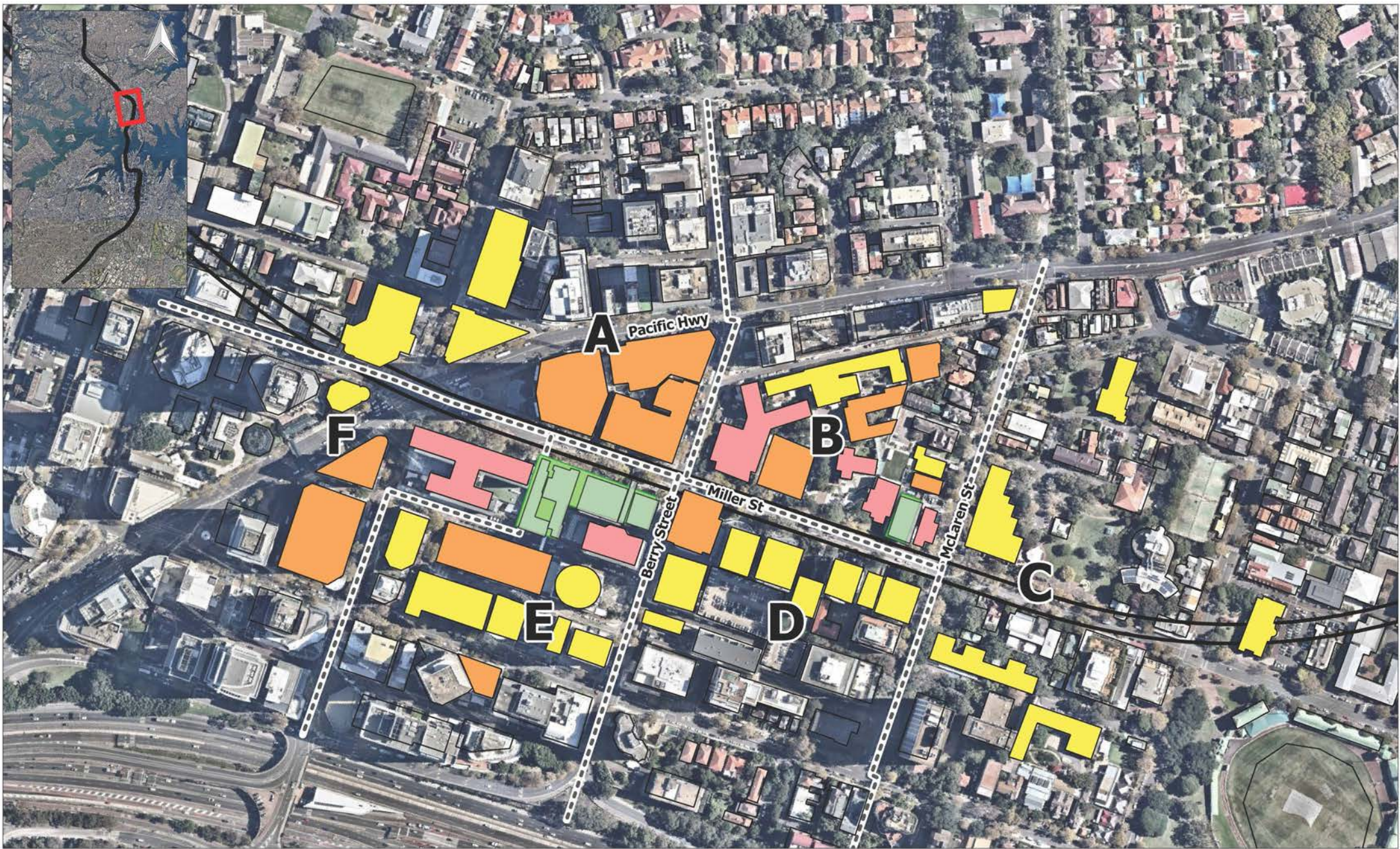
--- Receiver Area ■ Construction Area ■ Acquired Building

Worst-case Exceedance of NML

■ 0 dB - 10 dB ■ 10 dB - 20 dB ■ > 20 dB

Jacobs Group (Australia) Pty Limited
Sydney Metro Chatswood to Sydenham
Construction Noise Predictions
Worst-case NML Exceedance
Enabling Works - Daytime

The content contained within this document may be based on third party data. SLR Consulting Australia Pty Ltd does not guarantee the accuracy of such information.



2 LINCOLN STREET
LANE COVE
NSW 2066
AUSTRALIA
T: +61 2 9427 8100
F: +61 2 0801
www.slrc consulting.com

Project No.: 610.14718
Date: 08/12/2015
Drawn by: IMR
Scale: 1:4,000
Sheet Size: @A4
Projection: GDA 1994 MGA Zone 56



50 0 50 100 m

--- Receiver Area Construction Area Acquired Building

Worst-case Exceedance of NML

0 dB - 10 dB 10 dB - 20 dB > 20 dB

Jacobs Group (Australia) Pty Limited

Sydney Metro Chatswood to Sydenham

Construction Noise Predictions
Worst-case NML Exceedance
Enabling Works - Daytime

The content contained within this document may be based on third party data. SLR Consulting Australia Pty Ltd does not guarantee the accuracy of such information.



2 LINCOLN STREET
 LANE COVE
 NSW 2066
 AUSTRALIA
 T: +61 2 9427 8100
 F: +61 2 0801
 www.slrconsulting.com

Project No.:	610.14718
Date:	08/12/2015
Drawn by:	MR
Scale:	1:4,000
Sheet Size:	@A4
Projection:	GDA 1994 MGA Zone 56



--- Receiver Area Construction Area Acquired Building

Worst-case Exceedance of NML

0 dB - 10 dB 10 dB - 20 dB > 20 dB

Jacobs Group (Australia) Pty Limited
 Sydney Metro Chatswood to Sydenham
 Construction Noise Predictions
 Worst-case NML Exceedance
 Enabling Works - Daytime

The content contained within this document may be based on third party data. SLR Consulting Australia Pty Ltd does not guarantee the accuracy of such information.



2 LINCOLN STREET
LANE COVE
NSW 2066
AUSTRALIA
T: +61 2 9427 8100
F: +61 2 0801
www.slrconsulting.com

Project No.: 610.14718
Date: 08/12/2015
Drawn by: MR
Scale: 1:4,000
Sheet Size: @A4
Projection: GDA 1994 MGA Zone 56



50 0 50 100 m

--- Receiver Area Construction Area Acquired Building

Worst-case Exceedance of NML

0 dB - 10 dB 10 dB - 20 dB > 20 dB

Jacobs Group (Australia) Pty Limited

Sydney Metro Chatswood to Sydenham

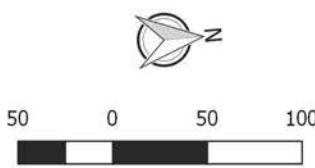
Construction Noise Predictions
Worst-case NML Exceedance
Enabling Works - Daytime

The content contained within this document may be based on third party data. SLR Consulting Australia Pty Ltd does not guarantee the accuracy of such information.



SLR
 2 LINCOLN STREET
 LANE COVE
 NSW 2066
 AUSTRALIA
 T: +61 2 9427 8100
 F: +61 2 0801
 www.slrconsulting.com

Project No.: 610.14718
 Date: 08/12/2015
 Drawn by: IMR
 Scale: 1:4,000
 Sheet Size: @A4
 Projection: GDA 1994 MGA Zone 56



--- Receiver Area ■ Construction Area ■ Acquired Building

Worst-case Exceedance of NML

■ 0 dB - 10 dB ■ 10 dB - 20 dB ■ > 20 dB

Jacobs Group (Australia) Pty Limited
 Sydney Metro Chatswood to Sydenham

**Construction Noise Predictions
 Worst-case NML Exceedance
 Enabling Works - Daytime**

The content contained within this document may be based on third party data. SLR Consulting Australia Pty Ltd does not guarantee the accuracy of such information.



2 LINCOLN STREET
LANE COVE
NSW 2066
AUSTRALIA
T: +61 2 9427 8100
F: +61 2 0801
www.slrc consulting.com

Project No.:	610.14718
Date:	08/12/2015
Drawn by:	MR
Scale:	1:4,000
Sheet Size:	@A4
Projection:	GDA 1994 MGA Zone 56



--- Receiver Area Construction Area Acquired Building

Worst-case Exceedance of NML

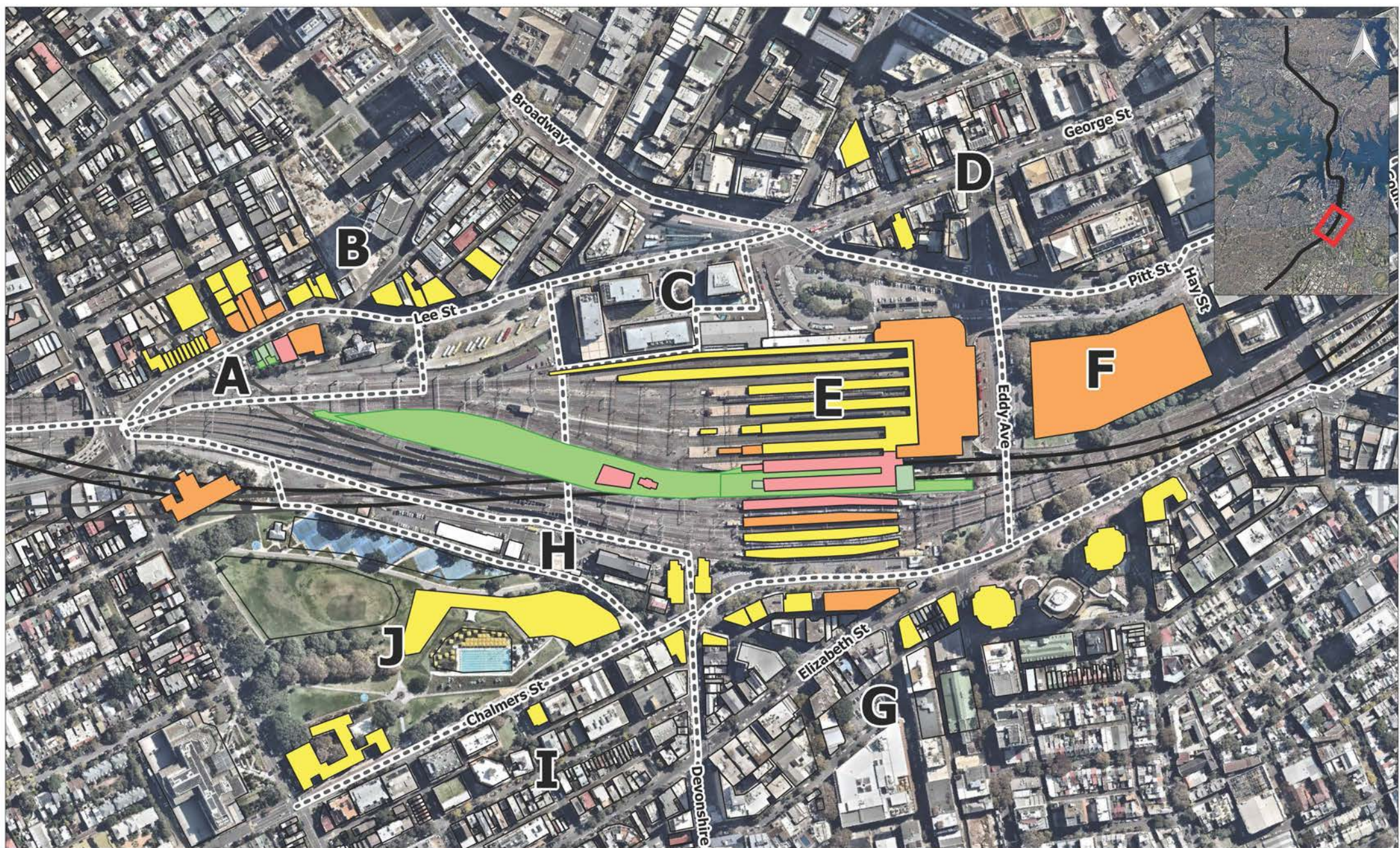
0 dB - 10 dB 10 dB - 20 dB > 20 dB

Jacobs Group (Australia) Pty Limited

Sydney Metro Chatswood to Sydenham

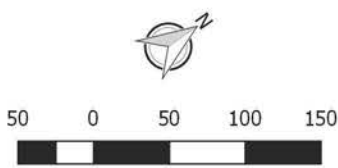
Construction Noise Predictions
Worst-case NML Exceedance
Enabling Works - Daytime

The content contained within this document may be based on third party data. SLR Consulting Australia Pty Ltd does not guarantee the accuracy of such information.



SLR
 2 LINCOLN STREET
 LANE COVE
 NSW 2066
 AUSTRALIA
 T: +61 2 9427 8100
 F: +61 2 0801
 www.slronconsulting.com

Project No.: 610.14718
 Date: 08/12/2015
 Drawn by: MR
 Scale: 1:5,000
 Sheet Size: @A4
 Projection: GDA 1994 MGA Zone 56



--- Receiver Area ■ Construction Area ■ Acquired Building

Worst-case Exceedance of NML

■ 0 dB - 10 dB ■ 10 dB - 20 dB ■ > 20 dB

Jacobs Group (Australia) Pty Limited
 Sydney Metro Chatswood to Sydenham

**Construction Noise Predictions
 Worst-case NML Exceedance
 Enabling Works - Daytime**

The content contained within this document may be based on third party data.
 SLR Consulting Australia Pty Ltd does not guarantee the accuracy of such information.



2 LINCOLN STREET
 LANE COVE
 NSW 2066
 AUSTRALIA
 T: +61 2 9427 8100
 F: +61 2 0801
 www.slrconsulting.com

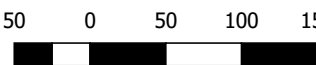
Project No.: 610.14718
 Date: 08/12/2015
 Drawn by: MR
 Scale: 1:5,000
 Sheet Size: @A4
 Projection: GDA 1994 MGA Zone 56



- - - Receiver Area Construction Area Acquired Building

Worst-case Exceedance of NML

0 dB - 10 dB 10 dB - 20 dB > 20 dB

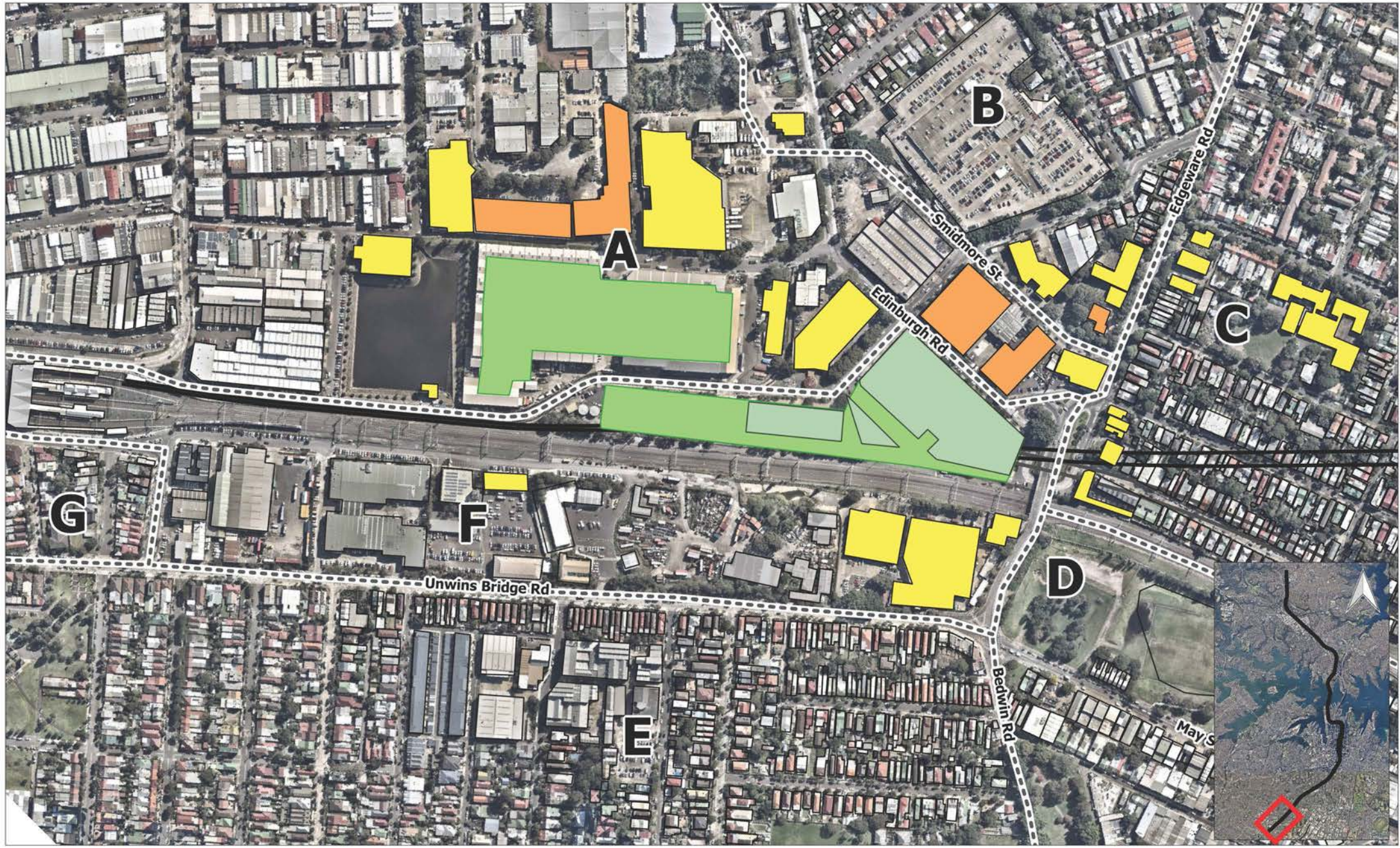


Jacobs Group (Australia) Pty Limited

Sydney Metro Ch t wood to Sydenh m

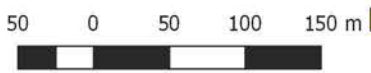
**Construction Noise Predictions
 Worst-case NML Exceedance
 Enabling Works - Daytime**

The content contained within this document may be based on third party data. SLR Consulting Australia Pty Ltd does not guarantee the accuracy of such information.



SLR  2 LINCOLN STREET
LANE COVE
NSW 2066
AUSTRALIA
T: +61 2 9427 8100
F: +61 2 0801
www.slronconsulting.com

Project No.: 610.14718
Date: 08/12/2015
Drawn by: IMR
Scale: 1:5,000
Sheet Size: @A4
Projection: GDA 1994 MGA Zone 56



--- Receiver Area ■ Construction Area ■ Acquired Building

Worst-case Exceedance of NML

■ 0 dB - 10 dB ■ 10 dB - 20 dB ■ > 20 dB

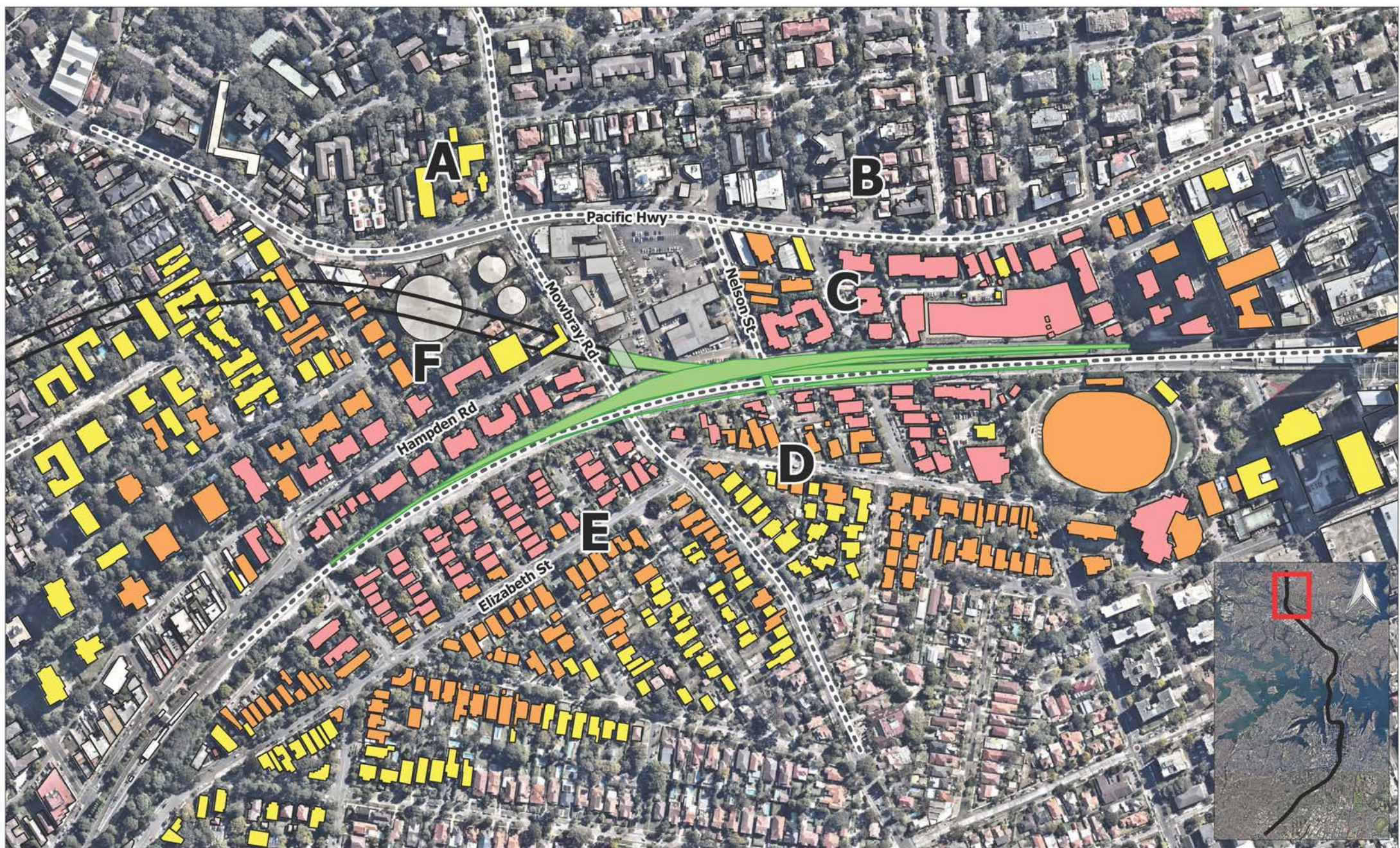
Jacobs Group (Australia) Pty Limited
Sydney Metro Chatswood to Sydenham

**Construction Noise Predictions
Worst-case NML Exceedance
Enabling Works - Daytime**

The content contained within this document may be based on third party data. SLR Consulting Australia Pty Ltd does not guarantee the accuracy of such information.

Appendix D2

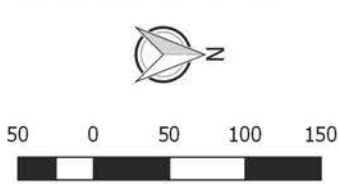
Report 610.14718R1
Construction Noise Predictions
Surface Track





SLR 

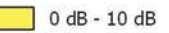
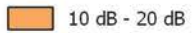

2 LINCOLN STREET
LANE COVE
NSW 2066
AUSTRALIA
T: +61 2 9427 8100
F: +61 2 0801
www.slrconsulting.com

Project No.: 610.14718
Date: 08/12/2015
Drawn by: IMR
Scale: 1:5,000
Sheet Size: @A4
Projection: GDA 1994 MGA Zone 56



--- Receiver Area  Construction Area  Acquired Building

Worst-case Exceedance of NML

 0 dB - 10 dB  10 dB - 20 dB  > 20 dB

Jacobs Group (Australia) Pty Limited
Sydney Metro Chatswood to Sydenham

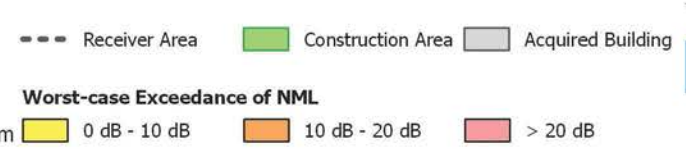
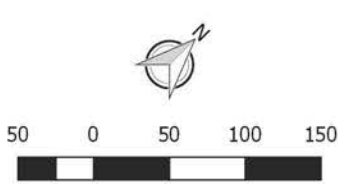
**Construction Noise Predictions
Worst-case NML Exceedance
Surface Track Works - Daytime**

The content within this document may be based on third party data.
SLR Consulting Australia Pty Ltd does not guarantee the accuracy of such information.



SLR  2 LINCOLN STREET
LANE COVE
NSW 2066
AUSTRALIA
T: +61 2 9427 8100
F: +61 2 0801
www.slronconsulting.com

Project No.: 610.14718
Date: 08/12/2015
Drawn by: IMR
Scale: 1:5,000
Sheet Size: @A4
Projection: GDA 1994 MGA Zone 56



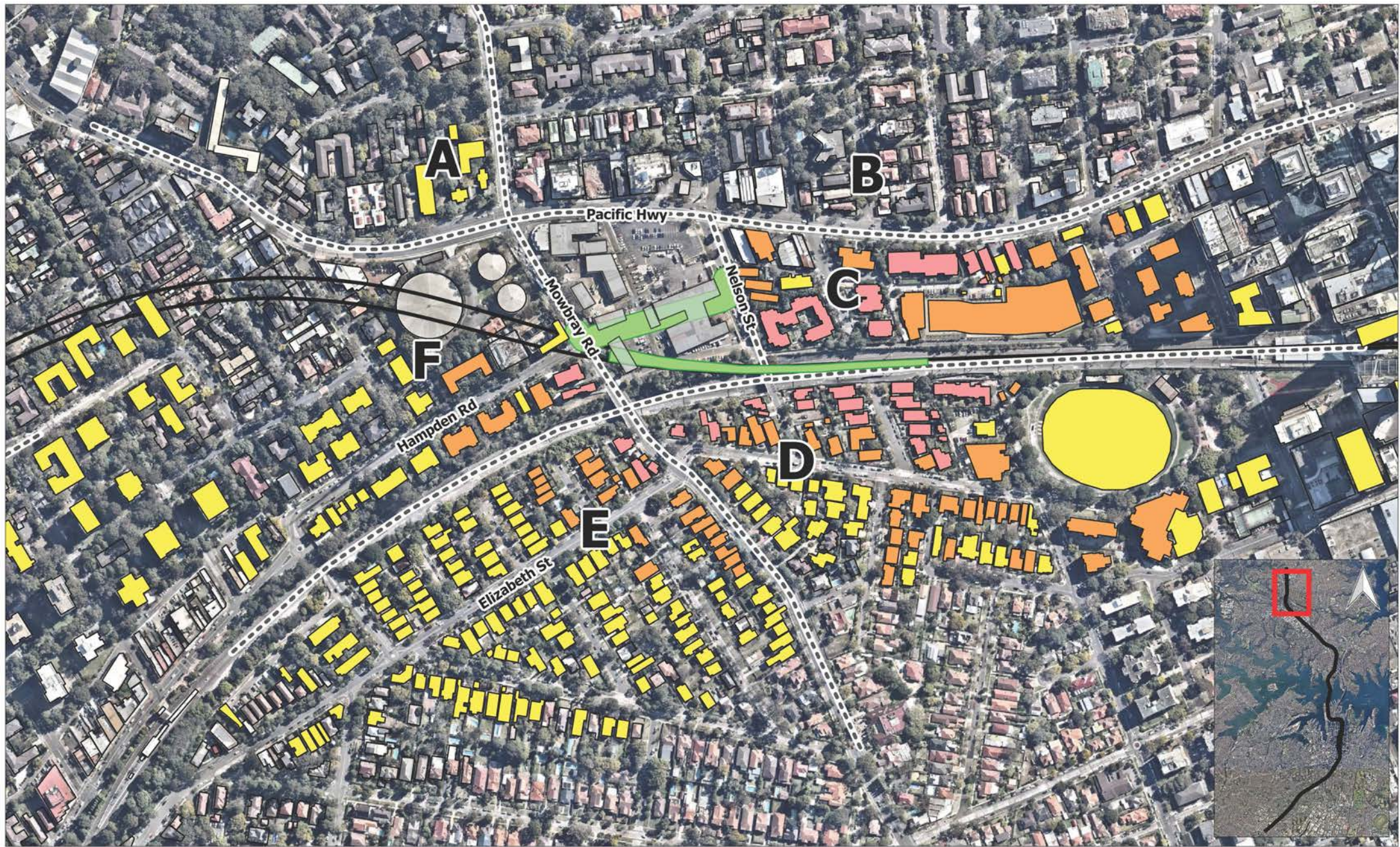
Jacobs Group (Australia) Pty Limited
Sydney Metro Chatswood to Sydenham

Construction Noise Predictions
Worst-case NML Exceedance
Surface Track Works - Daytime

The content contained within this document may be based on third party data. SLR Consulting Australia Pty Ltd does not guarantee the accuracy of such information.

Appendix D3

Report 610.14718R1
Construction Noise Predictions
Earthworks



2 LINCOLN STREET
 LANE COVE
 NSW 2066
 AUSTRALIA
 T: +61 2 9427 8100
 F: +61 2 0801
 www.slrconsulting.com

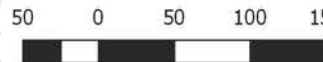
Project No.: 610.14718
 Date: 08/12/2015
 Drawn by: IMR
 Scale: 1:5,000
 Sheet Size: @A4
 Projection: GDA 1994 MGA Zone 56



--- Receiver Area Construction Area Acquired Building

Worst-case Exceedance of NML

0 dB - 10 dB 10 dB - 20 dB > 20 dB



Jacobs Group (Australia) Pty Limited

Sydney Metro Chatswood to Sydenham

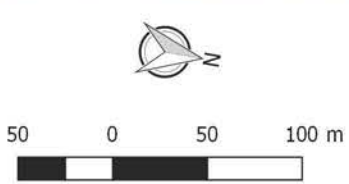
Construction Noise Predictions
 Worst-case NML Exceedance
 Earthworks - Daytime



The content contained within this document may be based on third party data.
 SLR Consulting Australia Pty Ltd does not guarantee the accuracy of such information.




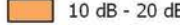

SLR  2 LINCOLN STREET
LANE COVE
NSW 2066
AUSTRALIA
T: +61 2 9427 8100
F: +61 2 0801
www.slrconsulting.com

Project No.: 610.14718
Date: 08/12/2015
Drawn by: MR
Scale: 1:4,000
Sheet Size: @A4
Projection: GDA 1994 MGA Zone 56



--- Receiver Area  Construction Area  Acquired Building

Worst-case Exceedance of NML

 0 dB - 10 dB  10 dB - 20 dB  > 20 dB

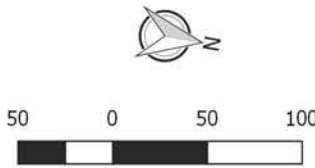
Jacobs Group (Australia) Pty Limited
Sydney Metro Chatswood to Sydenham
Construction Noise Predictions
Worst-case NML Exceedance
Earthworks - Daytime

The content contained within this document may be based on third party data. SLR Consulting Australia Pty Ltd does not guarantee the accuracy of such information.



2 LINCOLN STREET
LANE COVE
NSW 2066
AUSTRALIA
T: +61 2 9427 8100
F: +61 2 0801
www.slrconsulting.com

Project No.: 610.14718
Date: 08/12/2015
Drawn by: MR
Scale: 1:4,000
Sheet Size: @A4
Projection: GDA 1994 MGA Zone 56



Jacobs Group (Australia) Pty Limited
Sydney Metro Chatswood to Sydenham
Construction Noise Predictions
Worst-case NML Exceedance
Earthworks - Daytime

The content contained within this document may be based on third party data. SLR Consulting Australia Pty Ltd does not guarantee the accuracy of such information.



2 LINCOLN STREET
LANE COVE
NSW 2066
AUSTRALIA
T: +61 2 9427 8100
F: +61 2 0801
www.slrconsulting.com

Project No.: 610.14718
Date: 08/12/2015
Drawn by: IMR
Scale: 1:4,000
Sheet Size: @A4
Projection: GDA 1994 MGA Zone 56



50 0 50 100 m

--- Receiver Area Construction Area Acquired Building

Worst-case Exceedance of NML

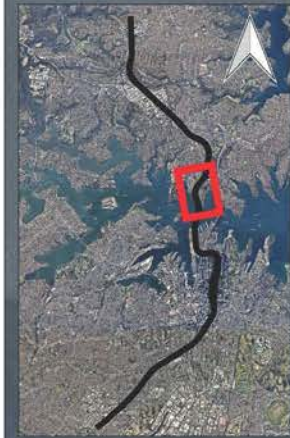
0 dB - 10 dB 10 dB - 20 dB > 20 dB

Jacobs Group (Australia) Pty Limited

Sydney Metro Chatswood to Sydenham

Construction Noise Predictions
Worst-case NML Exceedance
Earthworks - Daytime

The content contained within this document may be based on third party data. SLR Consulting Australia Pty Ltd does not guarantee the accuracy of such information.



2 LINCOLN STREET
LANE COVE
NSW 2066
AUSTRALIA
T: +61 2 9427 8100
F: +61 2 0801
www.slrconsulting.com

Project No.:	610.14718
Date:	08/12/2015
Drawn by:	MR
Scale:	1:4,000
Sheet Size:	@A4
Projection:	GDA 1994 MGA Zone 56



50 0 50 100 m

--- Receiver Area Construction Area Acquired Building

Worst-case Exceedance of NML

0 dB - 10 dB 10 dB - 20 dB > 20 dB

Jacobs Group (Australia) Pty Limited

Sydney Metro Chatswood to Sydenham

Construction Noise Predictions
Worst-case NML Exceedance
Earthworks - Daytime

The content contained within this document may be based on third party data. SLR Consulting Australia Pty Ltd does not guarantee the accuracy of such information.



2 LINCOLN STREET
LANE COVE
NSW 2066
AUSTRALIA
T: +61 2 9427 8100
F: +61 2 0801
www.slrconsulting.com

Project No.: 610.14718
Date: 08/12/2015
Drawn by: MR
Scale: 1:4,000
Sheet Size: @A4
Projection: GDA 1994 MGA Zone 56



50 0 50 100 m

--- Receiver Area Construction Area Acquired Building

Worst-case Exceedance of NML

0 dB - 10 dB 10 dB - 20 dB > 20 dB

Jacobs Group (Australia) Pty Limited

Sydney Metro Chatswood to Sydenham

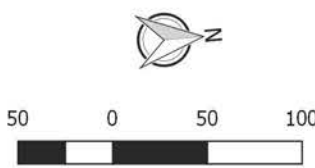
**Construction Noise Predictions
Worst-case NML Exceedance
Earthworks - Daytime**

The content contained within this document may be based on third party data. SLR Consulting Australia Pty Ltd does not guarantee the accuracy of such information.



SLR 2 LINCOLN STREET
LANE COVE
NSW 2066
AUSTRALIA
T: +61 2 9427 8100
F: +61 2 0801
www.slrconsulting.com

Project No.: 610.14718
Date: 08/12/2015
Drawn by: IMR
Scale: 1:4,000
Sheet Size: @A4
Projection: GDA 1994 MGA Zone 56



--- Receiver Area ■ Construction Area ■ Acquired Building

Worst-case Exceedance of NML

■ 0 dB - 10 dB ■ 10 dB - 20 dB ■ > 20 dB

Jacobs Group (Australia) Pty Limited
Sydney Metro Chatswood to Sydenham

**Construction Noise Predictions
Worst-case NML Exceedance
Earthworks - Daytime**

The content contained within this document may be based on third party data.
SLR Consulting Australia Pty Ltd does not guarantee the accuracy of such information.



2 LINCOLN STREET
LANE COVE
NSW 2066
AUSTRALIA
T: +61 2 9427 8100
F: +61 2 0801
www.slrc consulting.com

Project No.:	610.14718
Date:	08/12/2015
Drawn by:	MR
Scale:	1:4,000
Sheet Size:	@A4
Projection:	GDA 1994 MGA Zone 56



--- Receiver Area Construction Area Acquired Building

Worst-case Exceedance of NML

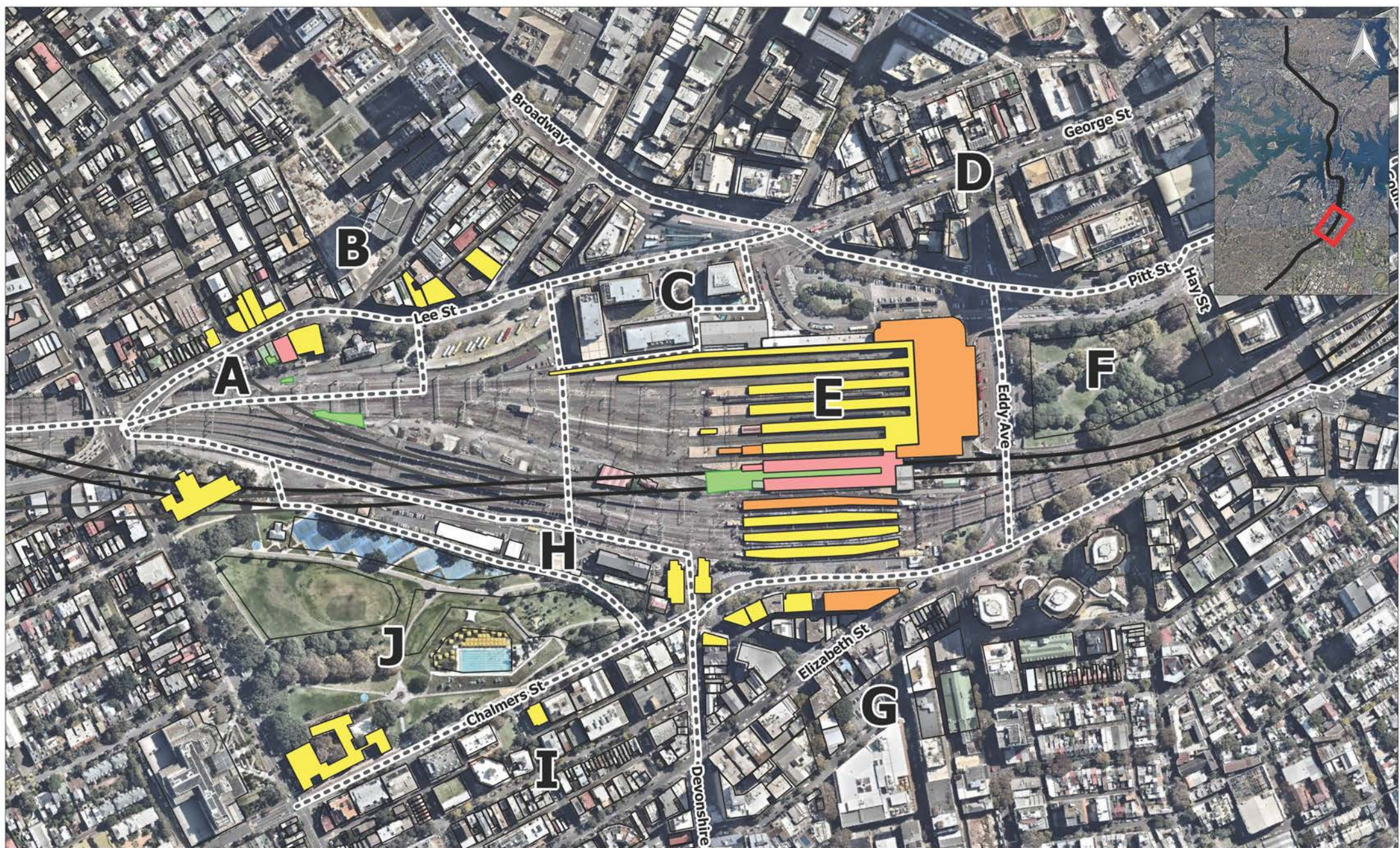
0 dB - 10 dB 10 dB - 20 dB > 20 dB

Jacobs Group (Australia) Pty Limited

Sydney Metro Chatswood to Sydenham

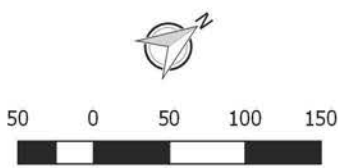
Construction Noise Predictions
Worst-case NML Exceedance
Earthworks - Daytime

The content contained within this document may be based on third party data. SLR Consulting Australia Pty Ltd does not guarantee the accuracy of such information.



SLR
 2 LINCOLN STREET
 LANE COVE
 NSW 2066
 AUSTRALIA
 T: +61 2 9427 8100
 F: +61 2 0801
 www.slronconsulting.com

Project No.: 610.14718
 Date: 08/12/2015
 Drawn by: MR
 Scale: 1:5,000
 Sheet Size: @A4
 Projection: GDA 1994 MGA Zone 56



--- Receiver Area Construction Area Acquired Building

Worst-case Exceedance of NML

0 dB - 10 dB 10 dB - 20 dB > 20 dB

Jacobs Group (Australia) Pty Limited
 Sydney Metro Chatswood to Sydenham

**Construction Noise Predictions
 Worst-case NML Exceedance
 Earthworks - Daytime**

The content contained within this document may be based on third party data. SLR Consulting Australia Pty Ltd does not guarantee the accuracy of such information.



2 LINCOLN STREET
 LANE COVE
 NSW 2066
 AUSTRALIA
 T: +61 2 9427 8100
 F: +61 2 0801
 www.slrconsulting.com

Project No.: 610.14718
 Date: 08/12/2015
 Drawn by: MR
 Scale: 1:5,000
 Sheet Size: @A4
 Projection: GDA 1994 MGA Zone 56



--- Receiver Area Construction Area Acquired Building

Worst-case Exceedance of NML

0 dB - 10 dB 10 dB - 20 dB > 20 dB

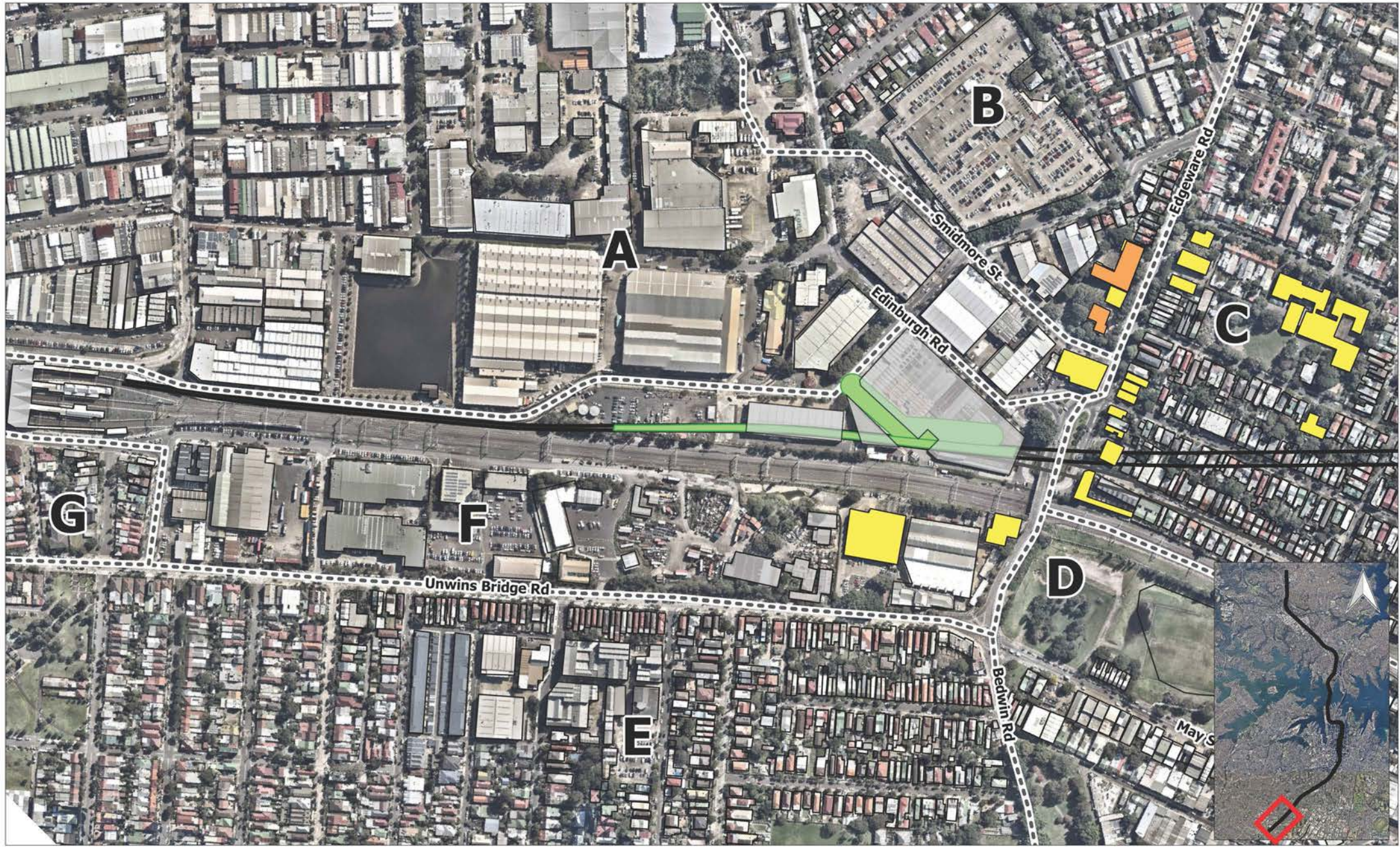


Jacobs Group (Australia) Pty Limited

Sydney Metro Ch t wood to Sydenh m

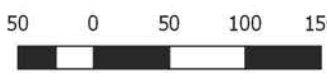
**Construction Noise Predictions
 Worst-case NML Exceedance
 Earthworks - Daytime**

The content contained within this document may be based on third party data. SLR Consulting Australia Pty Ltd does not guarantee the accuracy of such information.



SLR  2 LINCOLN STREET
LANE COVE
NSW 2066
AUSTRALIA
T: +61 2 9427 8100
F: +61 2 0801
www.slronconsulting.com

Project No.: 610.14718
Date: 08/12/2015
Drawn by: IMR
Scale: 1:5,000
Sheet Size: @A4
Projection: GDA 1994 MGA Zone 56



--- Receiver Area  Construction Area  Acquired Building

Worst-case Exceedance of NML

 0 dB - 10 dB  10 dB - 20 dB  > 20 dB

Jacobs Group (Australia) Pty Limited
Sydney Metro Chatswood to Sydenham

**Construction Noise Predictions
Worst-case NML Exceedance
Earthworks - Daytime**

The content contained within this document may be based on third party data.
SLR Consulting Australia Pty Ltd does not guarantee the accuracy of such information.