



A Sydney Metro train on the Northwest line.

# Project update

## Sydney Metro is Australia's biggest public transport project.

The NSW Government is delivering Sydney Metro West – a new underground metro railway which will double rail capacity between Parramatta and the Sydney CBD, transforming Sydney for generations to come.

This once-in-a-century infrastructure investment will provide fast, reliable turn-up-and-go metro services with fully accessible stations, link new communities to rail services and support employment growth and housing supply.

The project is expected to create about 10,000 direct and 70,000 indirect jobs during construction.

Stations have been confirmed at Westmead, Parramatta, Sydney Olympic Park, North Strathfield, Burwood North, Five Dock, The Bays, Pyrmont and Hunter Street in the Sydney CBD.

Two potential station locations are being investigated west of Sydney Olympic Park, including one at Rosehill Gardens which could support a significant increase in housing.

Sydney Metro West will target an opening date of 2032.

## A new generation of fast, safe and reliable metro trains



Australia's first fully accessible railway: level access between train and platform.



No timetable – just turn up and go.



New driverless technology, including platform screen safety doors keeping people and objects like prams away from tracks.



At all times, a team of expert train controllers will monitor Sydney Metro, making sure everything runs smoothly.



Wheelchair spaces, separate priority seating and emergency intercoms inside trains.



Heating and air-conditioning in all metro trains.

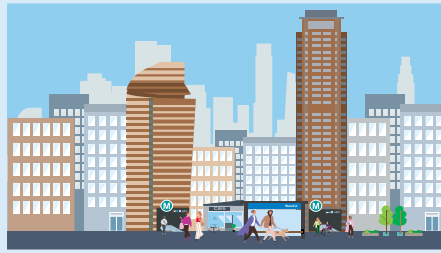


Continuous mobile phone coverage throughout the metro network.

# Why Sydney Metro West?



Taking cars off Sydney roads, with about 83,000 fewer car trips expected every weekday by 2036



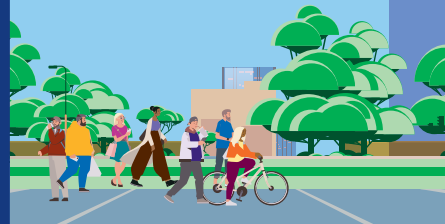
Faster and more frequent access to major employment and education centres



Connecting Greater Western Sydney by doubling rail capacity between Parramatta and Sydney CBD



Creating vibrant and attractive places integrated with local areas



Linking new communities to rail services



Delivering new stations to support housing supply

## The Sydney Metro Review

In April 2023, the NSW Government announced it would conduct an independent review into Sydney Metro. Final recommendations of the review were released in December 2023.

The NSW Government has committed to the delivery of Sydney Metro West including the current nine confirmed stations at a minimum.

Following the review recommendations, Sydney Metro will now also investigate two potential station locations west of Sydney Olympic Park, including one at Rosehill Gardens which could support a significant increase in housing.

This will form part of a broader property and placemaking strategy across the Sydney Metro network to support the NSW Government's priorities to lift housing supply.

To allow this work to occur, Sydney Metro is now targeting an opening date of 2032 for Sydney Metro West.

Additionally, Sydney Metro will support recommendations from the review to improve bus and active transport connections to broaden the catchment of Sydney Metro West stations.

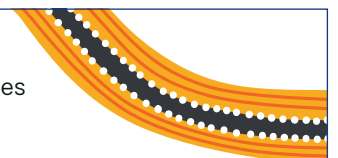
Sydney Metro will continue working closely with stakeholders, industry, local government, and communities to implement the recommendations of the Sydney Metro review.

### Based on the review's recommendations, Sydney Metro will:

- Deliver the current nine station alignment of Sydney Metro West.
- Target an opening date of 2032.
- Prepare scoping studies for up to two new stations west of Sydney Olympic Park, including one at Rosehill Gardens.
- Continue design and construction planning, ensuring that future station locations are not precluded.
- Support additional work to improve bus and active transport connections to broaden the catchment of the existing alignment.
- Support the NSW Government's priorities regarding housing supply.

Sydney Metro respectfully acknowledges the Traditional Custodians of the Sydney Metro West corridor, the Burramattagal, Wangal and Gadigal clans. We recognise the importance of these places to Aboriginal peoples and their continuing connection to Country and culture. We pay our respect to Elders past and present.

Many of the transport routes we use today – from rail lines, to roads, to water-crossings – follow the traditional Songlines, trade routes and ceremonial paths in Country that our nation's First Peoples followed for tens of thousands of years.





# Sydney Metro West stations – creating world-class places and precincts



\*All images are artist's impressions, indicative only and subject to design development.





Two tunnel boring machines (TBMs) have achieved a double breakthrough at Five Dock Station.

## Tunnelling update

Six tunnel boring machines (TBMs) will carve out the 24-kilometre Sydney Metro West line between Sydney CBD and Westmead. Four TBMs have already started their journey commencing major tunnelling for Sydney Metro West.

TBMs Daphne and Beatrice were launched from The Bays Station site in Rozelle in 2023 and have tunnelled more than 4.3 kilometres towards Sydney Olympic Park. Both TBMs achieved a record-breaking milestone when they broke through the rock wall at Five Dock late last year, claiming the title as the first TBMs in the southern hemisphere to complete a double breakthrough.

Meanwhile, TBMs Betty and Dorothy were launched from the Clyde Stabling and Maintenance Facility site in the second half of 2023 and are also making their way towards Sydney Olympic Park. All four TBMs are expected to reach Sydney Olympic Park in 2024.

Over at The Bays Station, the site is being prepared for the arrival of the project's two remaining TBMs that will be launched towards Hunter Street, completing tunnelling for Sydney Metro West in 2026.

To stay up-to-date on the progress of the TBMs, visit our tunnel tracker at [sydneymetro.info](https://www.sydneymetro.info)

## Construction progress

<p><b>Westmead Metro Station</b></p> <p>Site establishment and demolition</p> <p>100% complete</p> <p>Station excavation</p> <p>60% complete</p>	<p><b>North Strathfield Metro Station</b></p> <p>Site establishment</p> <p>100% complete</p> <p>Station excavation</p> <p>100% complete</p>	<p><b>The Bays Station</b></p> <p>Site establishment</p> <p>100% complete</p> <p>Station excavation</p> <p>100% complete</p>
<p><b>Parramatta Metro Station</b></p> <p>Site establishment and demolition</p> <p>100% complete</p> <p>Station excavation</p> <p>5% complete</p>	<p><b>Burwood North Station</b></p> <p>Site establishment and demolition</p> <p>100% complete</p> <p>Station excavation</p> <p>100% complete</p>	<p><b>Pymont Station</b></p> <p>Site establishment and demolition</p> <p>100% complete</p> <p>Station excavation</p> <p>Commencing in 2024</p>
<p><b>Sydney Olympic Park Metro Station</b></p> <p>Site establishment and demolition</p> <p>100% complete</p> <p>Station excavation</p> <p>100% complete</p>	<p><b>Five Dock Station</b></p> <p>Site establishment and demolition</p> <p>100% complete</p> <p>Station excavation</p> <p>100% complete</p>	<p><b>Hunter Street Station</b></p> <p>Site establishment and demolition</p> <p>50% complete</p> <p>Station excavation</p> <p>20% complete</p>

# Project timeline



## 2016-2019

- Sydney Metro West project announced
- Early stakeholder and community engagement
- Stations confirmed between Westmead and The Bays



## 2020-2023

- Stations confirmed at Pyrmont and Hunter Street in Sydney CBD
- Sydney Metro West received planning approval following public exhibition of three Environmental Impact Statements for tunnelling, stations, precincts and operations
- Commenced planning for over and/or adjacent station development at Parramatta, Sydney Olympic Park, Hunter Street and Pyrmont



## 2023-2026

- Tunnelling commenced across the project and is anticipated to be finished by 2026
- Investigating two potential additional stations west of Sydney Olympic Park
- Planning continuing for over and/or adjacent station development at Parramatta, Sydney Olympic Park, Hunter Street and Pyrmont

We are here



## 2027-2032

- Station construction commencing
- Construction of over and/or adjacent station development at specific stations
- Construction of railway systems and signalling
- Testing and commissioning



## 2032

- Sydney Metro West target opening



## Come and meet the team

The Sydney Metro West project team will be out in the local community this year, engaging with our neighbours, local businesses and key stakeholders.

Our new mobile community information centre means we can come to you! You can expect to see the team at local markets, events, open days, pop ups, schools and libraries near the Sydney Metro West alignment.

You can keep up to date on when and where to find the mobile community information centre by signing up for alerts at [sydneymetro.info](https://sydneymetro.info)



Access information in over 100 languages.  
Download **Sydney Metro Connect** from the App store or get it on Google Play.

### Contact us

If you have any questions or would like more information please contact our project team:

1800 612 173 Community infoline open 24 hours  
[sydneymetrowest@transport.nsw.gov.au](mailto:sydneymetrowest@transport.nsw.gov.au)

Sydney Metro West  
PO Box K659, Haymarket NSW 1240



### Translating and interpreting service

If you need help understanding this information, please contact the Translating and Interpreting Service on 131 450 and ask them to call us on 1800 612 173.