

Notification – Aerotropolis Metro Station

25 March 2024

Sydney Metro is Australia’s biggest public transport project.

Sydney Metro – Western Sydney Airport is the new metro railway line which will service Greater Western Sydney and the new Western Sydney International (Nancy-Bird Walton) Airport. A city-shaping project, the 23-kilometre new railway will connect the Western Sydney Aerotropolis in the south with St Marys in the north – where customers can connect to the existing Sydney Trains suburban T1 Western Line. The NSW and Australian governments have a shared objective of having Sydney Metro – Western Sydney Airport operational when the airport opens for passenger services.

Parklife Metro consortium are delivering the Stations, Systems, Trains, Operations and Maintenance (SSTOM) works contract for Sydney Metro – Western Sydney Airport.

April work activity includes:

- Ongoing deliveries of machinery and equipment, including mobile cranes, excavators, piling rigs and pile cages
- Excavations, waterproofing, piling, formwork, steel fixing, and concrete pours inside the station box to construct the base of the station and supporting structures, and drainage pits
- Surveying and geotechnical investigation activities, including potholing and testing
- Site photography, including using drone camera above the construction site
- Installing environmental controls across the work site
- Please refer to map overleaf showing work locations.

Out-of-hours work activity includes:

- Ongoing deliveries of over-sized equipment and machinery
- Extended work hours for large concrete pours and concrete finishing works inside the station box
- Early start times on site piling and concrete pours inside the station box (this enables our workers to complete their shifts early enough before extreme heat conditions are experienced throughout the course of the day)

Preparation for tunnel boring machine retrieval:

- CPB Contractors Ghella (CPBG), who are completing the station boxes and tunnelling works for Sydney Metro – Western Sydney Airport, will also be carrying out work at the Aerotropolis site, in preparation for tunnel boring machine retrievals later in the year.
- CPB Contractors Ghella (CPBG), will also be carrying out out-of-hours work at the Aerotropolis site **24 hours a day, seven days a week**. Please see notification **SBT0172**.

What to expect and managing impacts:

- Work and equipment used in these work activities may generate some noise, vibration, and dust
- Mitigation measures will be in place to minimise impacts including installing noise blankets, where feasible, respite periods during high noise activities, noise and vibration monitoring, and water carts for dust suppression
- Increased light and heavy vehicle movements on surrounding roads. All vehicles will be turned off when not in use, non-tonal reversing alarms will be fitted to plant and machinery and trucks will avoid reversing into and on site, where feasible

- Temporary lighting to ensure a safe worksite will be directed away from properties
- Communication will be limited to radios only when moving and unloading equipment, with no use of horns or loud radios
- Traffic control and signage to safely assist motorists, pedestrians, and cyclists
- Most of our work will be completed during standard construction hours **Monday to Friday, 7am to 6pm** and **Saturday, 8am to 1pm**
- Out-of-hours work activities will be carried out to mitigate quality and safety risks, and in line with the project Environment Protection Licence, Road Occupancy Licences, and Transport for NSW requirements.

Impacted surrounding residents and businesses will be notified in advance of any out-of-hours work.

Three monthly lookahead of out-of-hours activities:

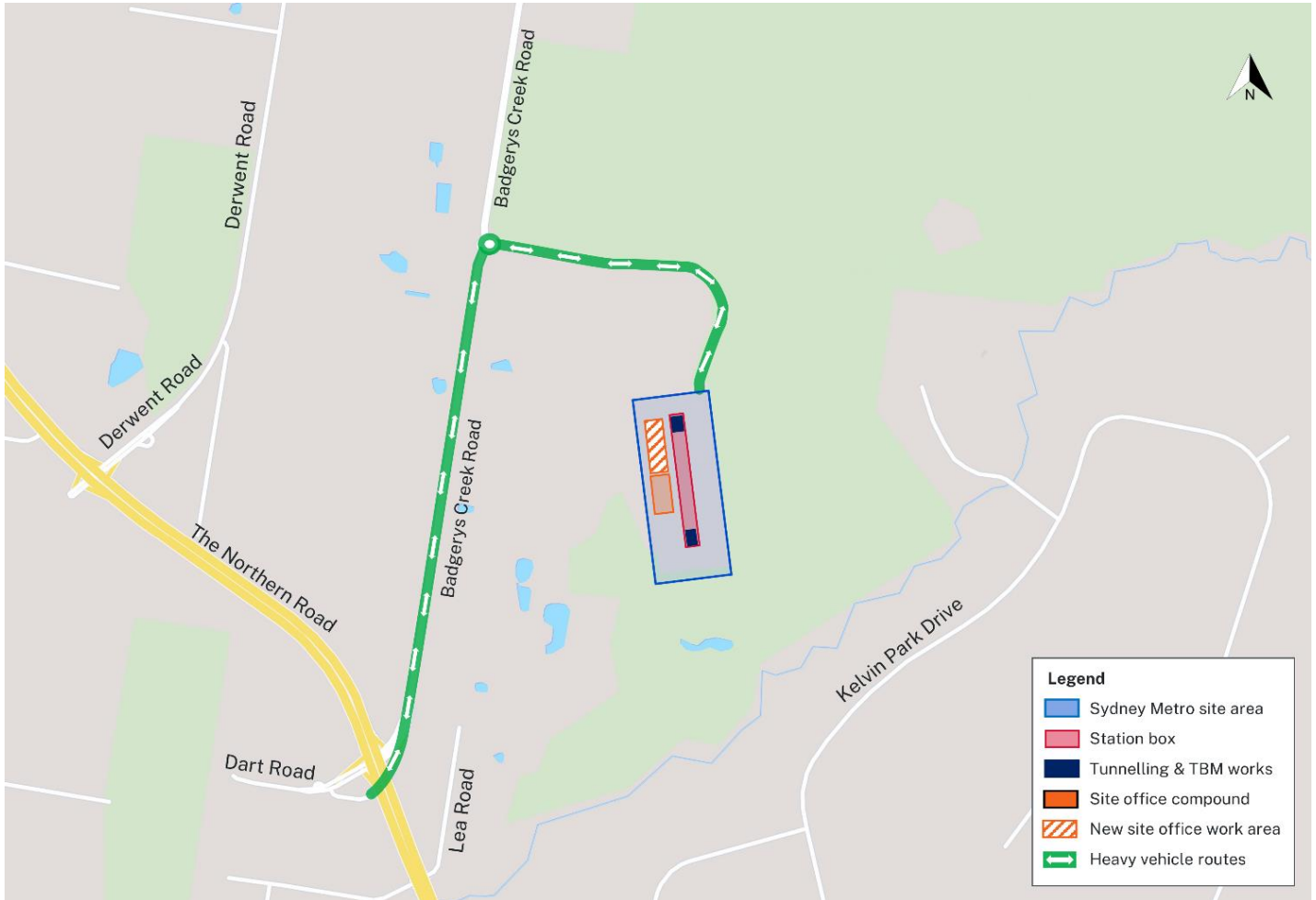
Activity	Equipment	Work hours	Timing
Oversized plant and equipment deliveries	Traffic management, light and heavy vehicles, generators, lighting towers and mobile cranes	10pm to 7am, Monday to Friday	Ongoing - 2024
Concrete pours - piling works and station box base slab and walls	Concrete pump, vibrators, concrete trucks, generators and lighting towers	6pm to 9pm, Monday to Friday 1pm to 4pm, Saturdays	April - June 2024
Concrete finishing works inside the station box	Power floats, concrete screed, vibrators, hand tools, generators and lighting towers	6pm to 10pm, Monday to Friday 1pm to 4pm, Saturdays	March - May 2024
Early start times for works inside the station box	Hand tools, drills, mobile cranes, drill rigs, excavators, rollers, vibrators, concrete trucks water carts, light and heavy vehicles, generators and lighting towers	5am to 7am, Monday to Friday	March - May 2024

Equipment used:

Equipment used will include, but is not limited to, tower crane, excavators, elevated work platforms, franna cranes, mobile cranes, forklifts and manitous, concrete pumps and concrete trucks, concrete vibrators water carts, jackhammers, compaction equipment, power generators, vacuum trucks, dewatering pump, handheld and tools, lighting towers, light and heavy vehicles, and traffic management.



Aerotropolis Metro Station work area:



Contact us:

Please contact Jess, the dedicated Place Manager from the Parklife Metro community team on **1800 717 703** or email sydneymetrowsa@transport.nsw.gov.au if you have any questions or would like to provide feedback about the work, including appropriate respite periods.

A Detailed Noise and Vibration Impact Statement (DNVIS) has been prepared, including proposed mitigation measures as a result of noise modelling. We invite your feedback if alternative measures may be required for your specific circumstances. To provide feedback, please contact the Parklife Metro Community Team.

Feedback:

Our Community Engagement Strategy is now online, and we are inviting feedback from the community. Please visit www.parklifemetro.com.au/SSTOMCCS to view the document and provide any feedback.

Thank you for your cooperation while we complete this essential work.

Contact us



24-hour Community Information Line **1800 717 703**



sydneymetrowsa@transport.nsw.gov.au



Sydney Metro – Western Sydney Airport,
PO Box K659, Haymarket NSW 1240



Access information in over 100 languages
Download **Sydney Metro Connect** from the
App store or get it on Google Play.



Translating and interpreting service

If you need help understanding this information, please contact the Translating and Interpreting Service on **131 450** and ask them to call us on **1800 717 703**.